

Contents

Meeting #3: October 13, 2022: Parks & Rec 101: Current Operations & Future Possibilities:
Maintenance Focus..... 2
 PROS Plan Overview & Themes..... 3
 Park Maintenance 2021 Facts..... 5
 Park Maintenance Video Links..... 9



Meeting #3: October 13, 2022: Parks & Rec 101: Current Operations & Future Possibilities: Maintenance Focus

Location: Online via Zoom

Join Link: [https://kirklandwa-](https://kirklandwa.gov.zoom.us/j/83306868820?pwd=VHIBU0c4Z0FRZVZYbzZjK2lnZnI5QT09)

gov.zoom.us/j/83306868820?pwd=VHIBU0c4Z0FRZVZYbzZjK2lnZnI5QT09

Meeting ID: 833 0686 8820 & Passcode: 879337

Agenda overview:

Time	Topic	Leading
6:00 p.m.	Team Connecting Time	All
6:14 p.m.	Land Acknowledgement	Susan Pappalardo
6:15 p.m.	Agenda overview, Zoom tips, Questions from last session	Hillary De La Cruz
6:20 p.m.	PROS Plan: Background, Level of Service for Parks	Mary Gardocki
6:35 p.m.	Parks Management <ul style="list-style-type: none">• Division Overview• Care and feeding of a ball field• Parks Service Levels	Jason Filan, Jeff Rotter, John Lloyd
7:15 p.m.	Break (10 minutes)	
7:25 p.m.	Parks Management Fun Facts <ul style="list-style-type: none">• Play takes work• What's in the cost: Maintaining your typical neighborhood park• Dog parks	Jason Filan
7:55 p.m.	PROS Plan: What did people say? What do they want?	Mary Gardocki, Lynn Zwaagstra
8:15 p.m.	Closing	Hillary De La Cruz

Staff present at today's meeting:

- Lynn Zwaagstra, Director, Parks & Community Services (PCS)
- Heather Lantz-Brazil, Administrative Assistant, PCS
- Hillary De La Cruz, Management Analyst, PCS
- Jason Filan, Parks Operation Manager, PCS
- Jeff Rotter, Parks Maintenance Supervisor, PCS
- Mary Gardocki, Park Planning and Development Manager
- Sara Shellenbarger, Recreation Manager
- Sarah Rock, Communications Program Specialist, PCS



PROS Plan Overview & Themes

Please read the [2022 PROS Plan Executive Summary, Goals, & Objectives online](#) or in section 12 of the print binder. If you want more, download the full document at www.kirklandwa.gov/PlayItForward



CITY OF KIRKLAND 123 5th Ave., Kirkland, WA 98033

Parks, Recreation & Open Space Plan



September 2022

<p>Executive Summary</p>  <p>read at home</p>	<p>Section I: Goals, Objectives, and Action Plan</p>  <p>read at home</p>	<p>Section II: Planning Context and Integrated Planning Efforts</p> <p>Optional</p>
<p>Section III: Community Profile</p> <p>Optional</p>	<p>Section IV: Community Engagement</p>  <p>PFEC Meetings: 10/13 & 11/10</p>	<p>Section V: Level of Service Standards and Guidelines</p>  <p>PFEC Meeting: 10/13</p>
<p>Section VI: Program Service Analysis</p>  <p>PFEC Meetings: 10/13 & 11/10</p>	<p>Section VII: Athletic Field Strategic Plan</p>  <p>PFEC Meeting: 10/13</p>	<p>Section VIII: Capital Improvement Plan and Priorities</p>  <p>To be discussed & costed</p>



Themes for 2022 PROS Plan Update

- Develop new, **innovative** ways to address the growing population and a more urban environment
- Make **better use** of our existing assets
- **Maintain** and **sustain** the current parks system
- **Build on this success** through an operational analysis
- Build a **stronger foundation** on which to grow
- Offer **opportunities** for **improvements** to meet the needs of this rapidly growing and changing community

Please read the [2022 PROS Plan Executive Summary, Goals, & Objectives online](#) or in section 12 of the print binder.

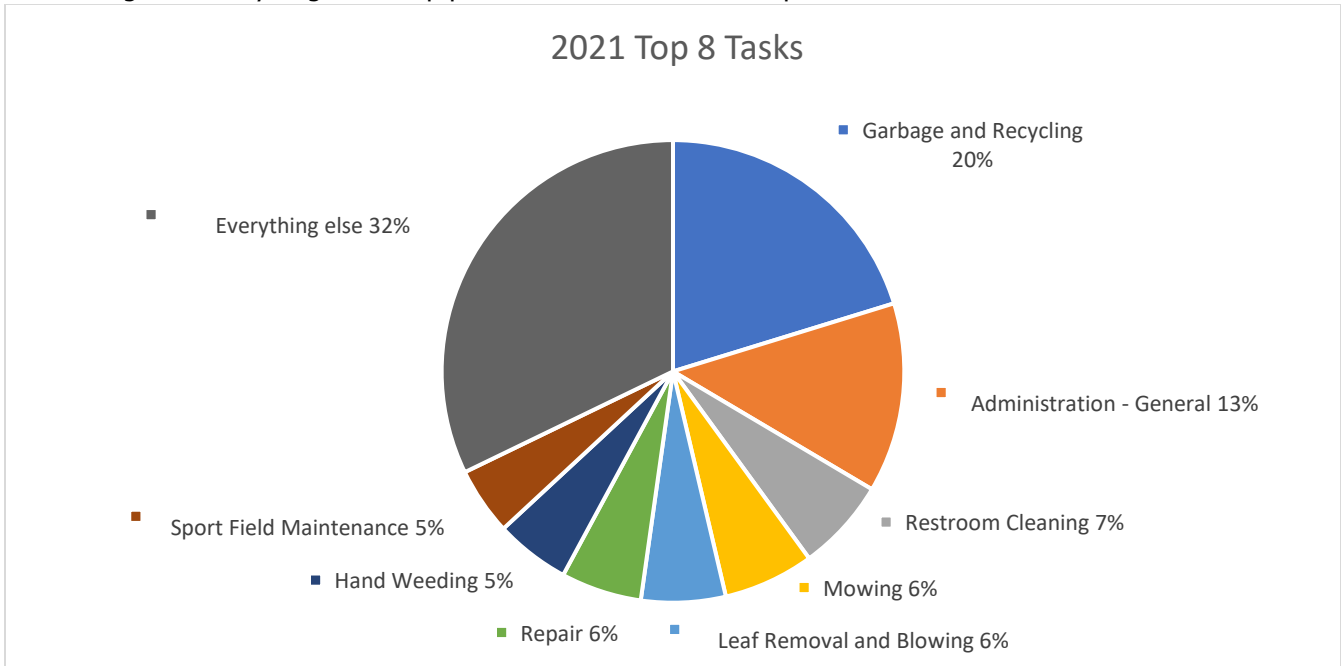
If you want more, download the full document at www.kirklandwa.gov/PlayItForward



Park Maintenance - 2021 Facts

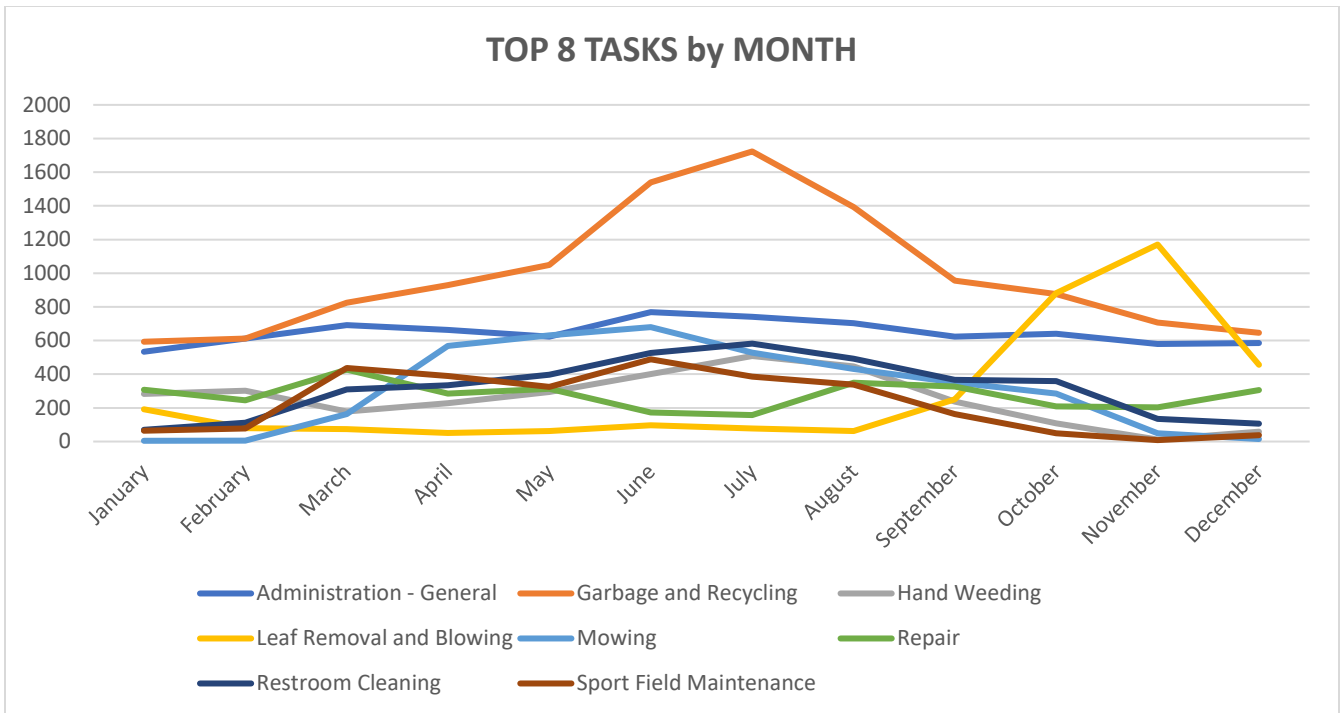
Top Tasks

Garbage and Recycling is the top park maintenance task. It represented 20.2% of all labor in 2021.



Task Seasonality

Park maintenance work is seasonal



All Tasks - 2021	Labor Hours	%
Garbage and Recycling	11,845	20.2%
Administration - General	7,764	13.3%
Restroom Cleaning	3,785	6.5%
Mowing	3,712	6.3%
Leaf Removal and Blowing	3,454	5.9%
Repair	3,303	5.6%
Hand Weeding	3,058	5.2%
Sport Field Maintenance	2,765	4.7%
Installation	1,783	3.0%
Mulching and Soil Amendments	1,684	2.9%
Inspection	1,597	2.7%
Brush Clearing	1,375	2.3%
Equipment Maintenance	1,177	2.0%
Pruning	1,085	1.9%
Cleaning	1,019	1.7%
Edging and Line Trimming	916	1.6%
Sport Field Game Setup	907	1.5%
Event Support	869	1.5%
Watering	801	1.4%
Administration - Training	736	1.3%
Tree Removal and Chipping	695	1.2%
Administration - Meetings	622	1.1%
Turf Repair and Maintenance	459	0.8%
Cemetery and Burial Services	436	0.7%
Snow Removal and De-Icing	378	0.6%
Pesticide Application	352	0.6%
Planting	332	0.6%
Inventory Management	250	0.4%
Nursery Management	225	0.4%
Water Chemistry	220	0.4%
Leading	187	0.3%
Beach Maintenance	155	0.3%
Outreach and Education	147	0.3%
Contracted Crew Restoration of Natural Areas	144	0.2%
Winterization and Spring Start Up	128	0.2%
Tree Inspection and Inventory	84	0.1%
Pool Maintenance	59	0.1%
Insane Impact LED	7	0.0%
2021 GRAND TOTAL:	58,509	100%

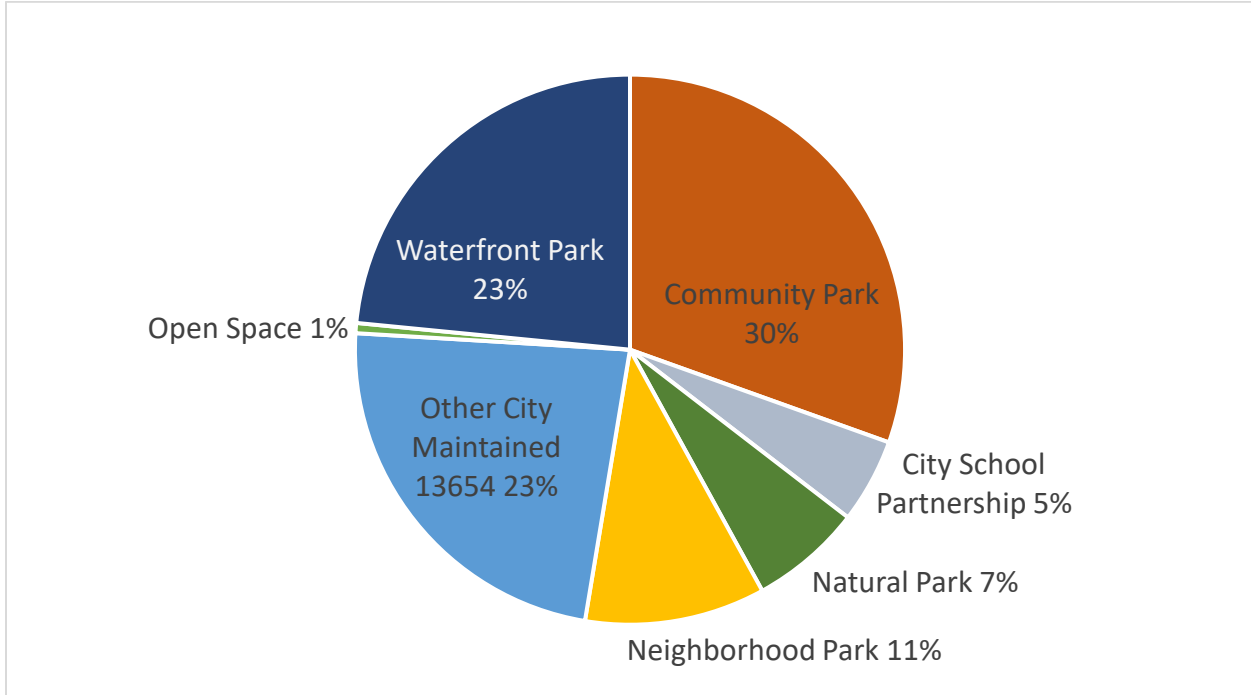


Labor Hours by Park - 2021	Labor Hours
132nd Square Park	765
2nd Avenue South Dock	230
Beach Property	4
Ben Franklin Elementary School	357
Brookhaven Park	133
Bud Homan Park	67
Carillon Woods	212
Cedar View Park	115
City Hall & Justice Center	142
Cotton Hill Park	67
Crestwoods Park	3,017
David E. Brink Park	438
Doris Cooper Houghton Beach Park	1,752
Edith Moulton Park	809
Emerson High School	266
Everest Park	4,398
FH1, FH2, FH3, FH4, FH5, FH7, FH8	76
Finn Hill Middle School	745
Fire Stations (21, 22, 25, 26, 27)	163
Forbes Creek Park	248
Forbes Lake Park	11
Hazen Hills Park	143
Heritage Park	2,509
Heronfield Wetlands	156
Highlands Park	132
HL1	1
Josten Park	98
JU1	99
JU2 & JU3	7
JU4	133
Juanita Bay Park	1,717
Juanita Beach Park	4,362
Juanita Elementary School	230
Juanita Heights Park	184
KG1 & KG2	24
Kingsgate Park	153
Kirkland Cemetery	1,958
Kirkland Heights	402
Kirkland Middle School	593

Kiwanis Park	197
Lake Ave W Street End Park	154
Lakeview Elementary School	136
Marina Park	1,993
Mark Twain Elementary School	217
Mark Twain Park	366
Marsh Park	1,111
McAuliffe Park	1,822
Neal-Landguth Wetland Park	1
North Kirkland Com Ctr & Park	1,067
North Rose Hill Woodlands Park	872
NRH1, NRH2, NRH3, NRH4	4
O O Denny Park	2,536
Ohde Avenue Pea Patch	35
Parks Maintenance Center	10,900
Peter Kirk Elementary School	195
Peter Kirk Park	4,127
Peter Kirk Pool	350
Phyllis A. Needy - Houghton Neighborhood	400
Reservoir Park	165
Rose Hill Elementary School	168
Rose Hill Meadows	419
Rotary Central Station	15
Settler's Landing	163
Snyder's Corner Park	64
South Norway Hill Park	194
South Rose Hill Park	627
Spinney Homestead Park	212
Terrace Park	163
TL1, TL2, TL3	19
Tot Lot Park	162
Totem Lake Park	657
Van Aalst Park	253
Watershed Park	276
Waverly Beach Park	1,132
Windsor Vista Park	310
Winski Parcel	1
Wiviott Property	11
Yarrow Bay Wetlands	111
2021 Grand Total	58,509

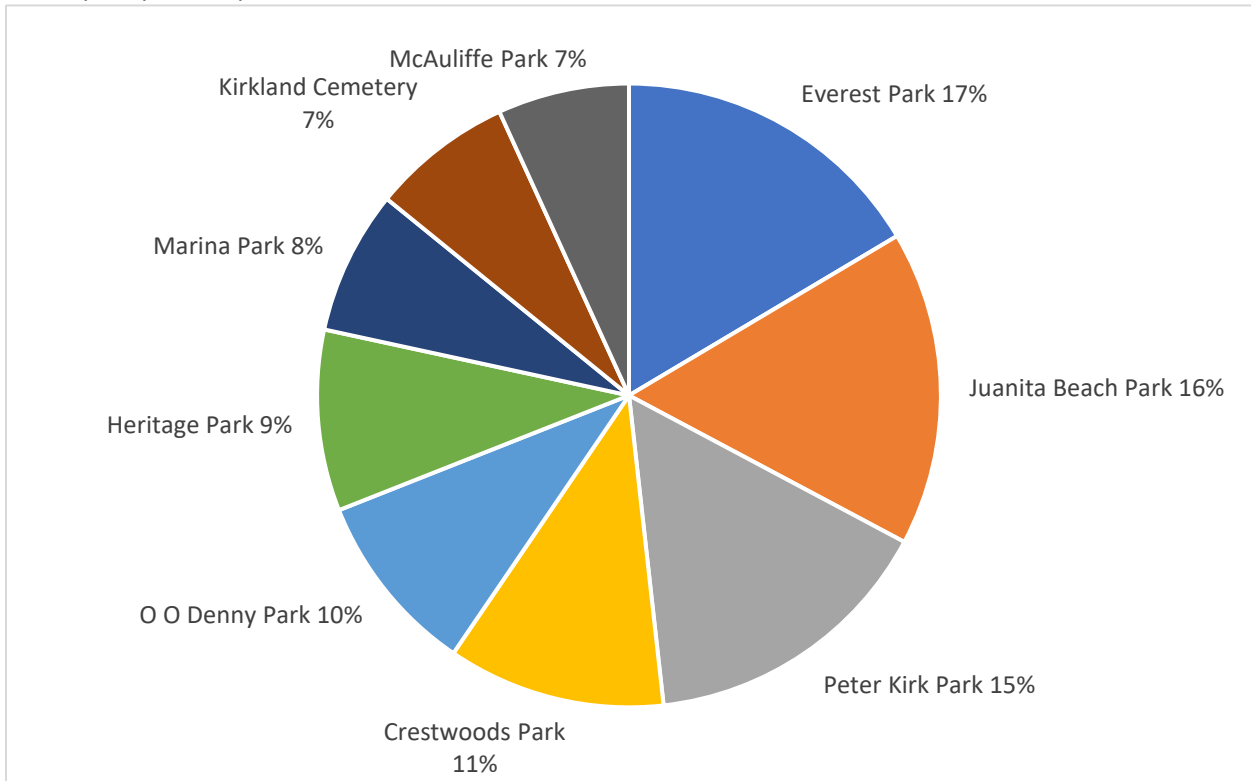


Maintenance varies by park type



2021 Top 10 Parks by Labor Hours

The top 10 parks represent 45.7% of all 2021 Labor Hours



Park Maintenance Video Links

1. Ballfields: Care and Feeding
 - a. <https://youtu.be/1LcoPZfEyZ8>
2. Playgrounds: Play Takes Work
 - a. <https://youtu.be/aZnfDp1gCgA>
3. All About Dog Parks
 - a. <https://youtu.be/G3MRENchpYM>

