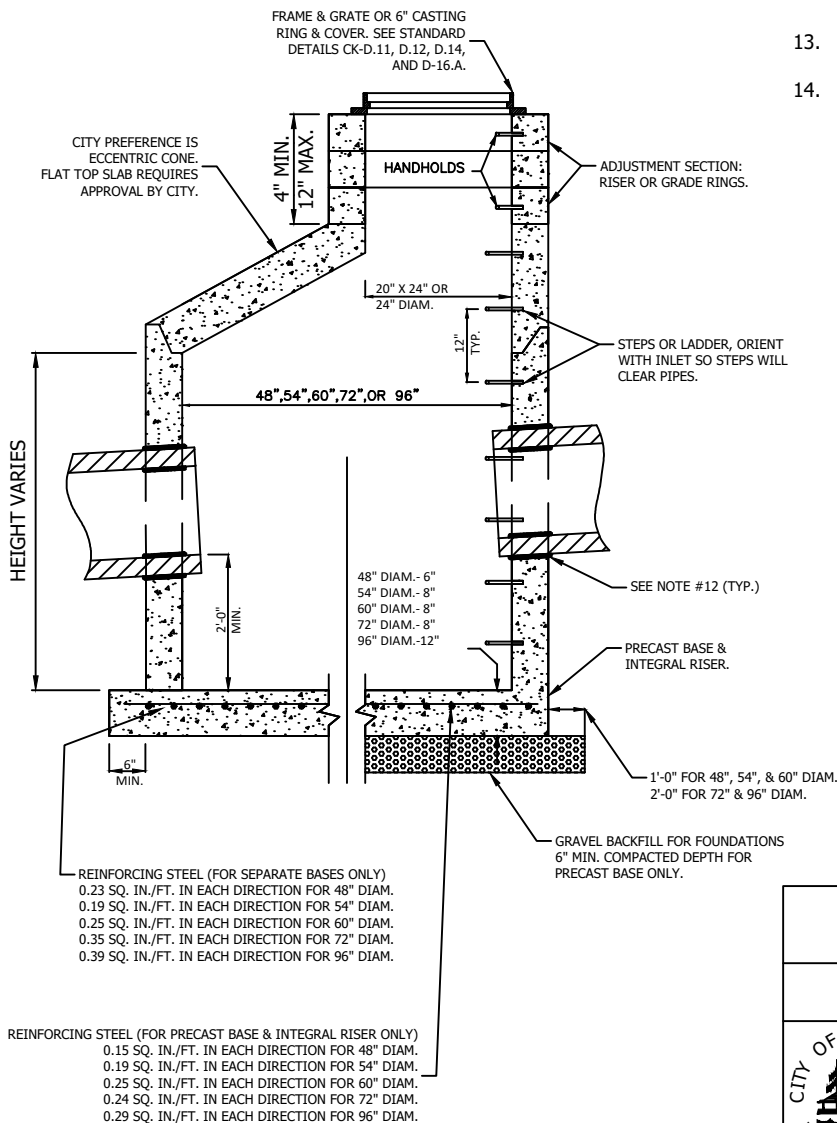


**NOTES:**

1. CATCH BASINS SHALL BE CONSTRUCTED IN ACCORDANCE WITH ASTM C478 (AASHTO M199) AND ASTM C890 UNLESS OTHERWISE SHOWN ON PLANS OR NOTED IN THE STANDARD SPECIFICATIONS.
2. HANDHOLDS IN ADJUSTMENT SECTION SHALL HAVE 3" MIN. CLEARANCE. STEPS IN CATCH BASIN SHALL HAVE 6" MIN. CLEARANCE. SEE STD. DTL. NO. CK-D.12, CATCH BASIN DETAILS. HANDHOLDS SHALL BE PLACED IN ALTERNATING GRADE RINGS OR LEVELING BRICK COURSE WITH A MIN. OF ONE HANDHOLD BETWEEN THE LAST STEP AND TOP OF THE FINISHED GRADE.
3. ALL REINFORCED CAST-IN-PLACE CONCRETE SHALL BE CLASS 4000. ALL PRECAST CONCRETE SHALL BE CLASS 4000.
4. PRECAST BASES SHALL BE FURNISHED WITH CUTOUTS OR KNOCKOUTS. KNOCKOUTS SHALL HAVE WALL THICKNESS OF 2" MIN. UNUSED KNOCKOUTS NEED NOT BE GROUTED IF WALL IS LEFT INTACT. PIPES SHALL BE INSTALLED ONLY IN FACTORY KNOCKOUTS UNLESS OTHERWISE APPROVED BY THE ENGINEER.
5. CATCH BASIN FRAMES AND GRATES OR COVERS SHALL BE IN ACCORDANCE WITH THE STANDARD SPECIFICATIONS. MATING SURFACES SHALL BE FINISHED TO ASSURE NON-ROCKING FIT WITH ANY COVER POSITION.
6. ALL BASE REINFORCING STEEL SHALL HAVE A MIN. YIELD STRENGTH OF 60,000 PSI AND BE PLACED IN THE UPPER HALF OF THE BASE WITH 1" MIN. CLEARANCE.
7. MIN. SOIL BEARING VALUE SHALL EQUAL 3,300 POUNDS PER SQUARE FOOT.
8. FOR DETAILS SHOWING LADDER, STEPS, HANDRAILS AND TOP SLABS, SEE STD. DTLs. NO. CK-D.12 AND CK-S.14.
9. ALL MANHOLE JOINTS SHALL USE A CONFINED RUBBER GASKET AND GROUTED (INSIDE AND OUT) TO MEET ASTM C-443 SPECIFICATIONS.
10. ROUND SOLID LOCKING LIDS REQUIRED WHENEVER CATCH BASIN DOES NOT COLLECT SURFACE WATER, OR WHEN LOCATED IN SIDEWALK AND PLANTER AREAS. SEE CK-D.18, CK-D.18A, AND CK-D.18B FOR REFERENCE.
11. ROUND CONCRETE RISERS ARE REQUIRED FOR ROUND SOLID LOCKING LIDS.
12. ALL NEW PIPES SHALL BE INSTALLED WITH EITHER A KOR-N-SEAL BOOT, OR SAND COLLARS AND A NON-SHRINK GROUT. JETSET OR SPEED CRETE RED LINE GROUT NOT ALLOWED.
13. MINIMUM 10' FROM ADJACENT TREES, UNLESS OTHERWISE APPROVED.
14. ALL RISERS WILL BE WET SET IN GROUT, AND SMOOTHED INSIDE AND OUT PRIOR TO BEING BURIED.



**ACCEPTABLE PIPE SIZES:**

Basin Type	Pipe Size								
	6"	8"	12"	15"	18"	24"	30"	36"	48"
Type II-48" CB	X	X	X	X	X	X	X		
Type II-54" CB	X	X	X	X	X	X	X	X	
Type II-60" CB	X	X	X	X	X	X	X	X	
Type II-72" CB	X	X	X	X	X	X	X	X	X
Type II-96" CB	X	X	X	X	X	X	X	X	X

**CITY OF KIRKLAND**

**PLAN NO. CK - D.09**



**CATCH BASIN  
TYPE 2**

**48", 54", 60", 72", 96"**