

YOU BELONG HERE
Sustainable – Connected – Welcoming

Sustainability, Climate and Environment Element

Focus Group Session #1



Peter Milliken
Planner

LeAndra Baker-Lewis
Assistant Planner

David Barnes
Senior Planner

Dakota Murphy
Assistant Planner

Lindsay Levine
Senior Planner

Agenda



- ❖ Introductions
- ❖ Logistics and Community Principles
- ❖ Comprehensive Plan 101
- ❖ What is Sustainability?
- ❖ What We've Heard So Far
- ❖ Exercise 1



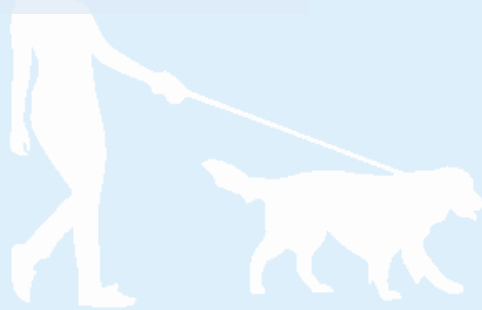
Logistics & Community Principles



Overview of buttons & etiquette

Community Principles

- Arrive as a community, leave as a community
- Respect the views of others
- Listen to understand, not to debate
- One person speaks at a time
- Identify solutions
- Hate speech is not tolerated

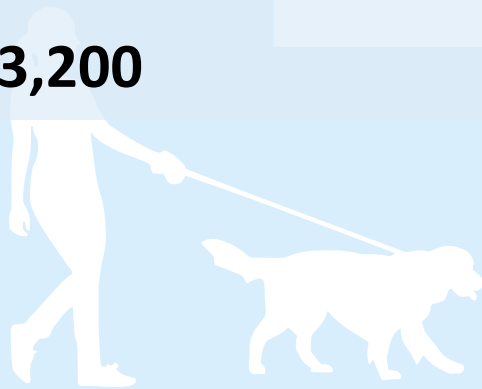


What is a Comprehensive Plan?

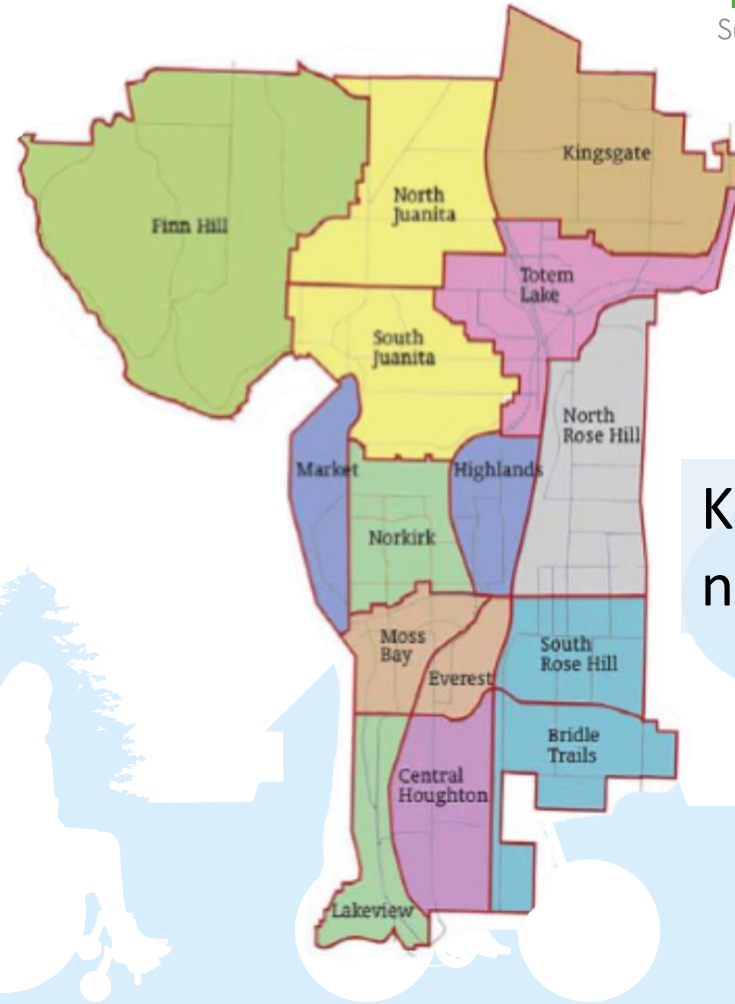
A citywide guiding policy document to attain Kirkland's long-range vision of the future and plan for expected growth in housing and jobs by the year 2044:

New jobs: 26,490

New housing units: 13,200



YOU BELONG HERE
Sustainable – Connected – Welcoming



Kirkland's neighborhoods

Where are we in the process?



2022 - 2023

2024



Outreach & Engagement continues throughout process

Sustainability – What is it?



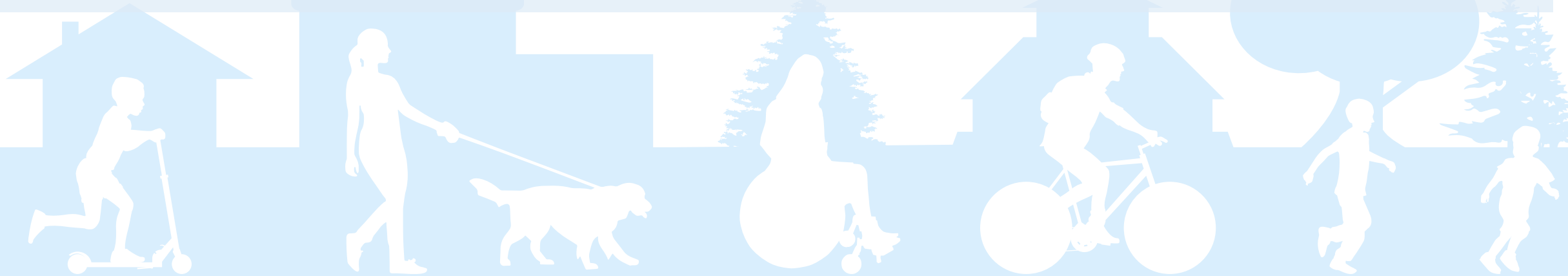
*“Sustainability consists of fulfilling the needs of current generations **without compromising** the needs of future generations, while ensuring a **balance** between **economic growth, environmental care, and social well-being.**”*



DEIB Goals



- ❖ **Diversity, Equity, Inclusion, and Belonging – 5 Year Plan**
- ❖ **Incorporate DEIB measures throughout all our policies and goals**
- ❖ **Use an equity lens in the update of the element**
- ❖ **Prioritize equitable inclusion and access into policies and eventual actions**

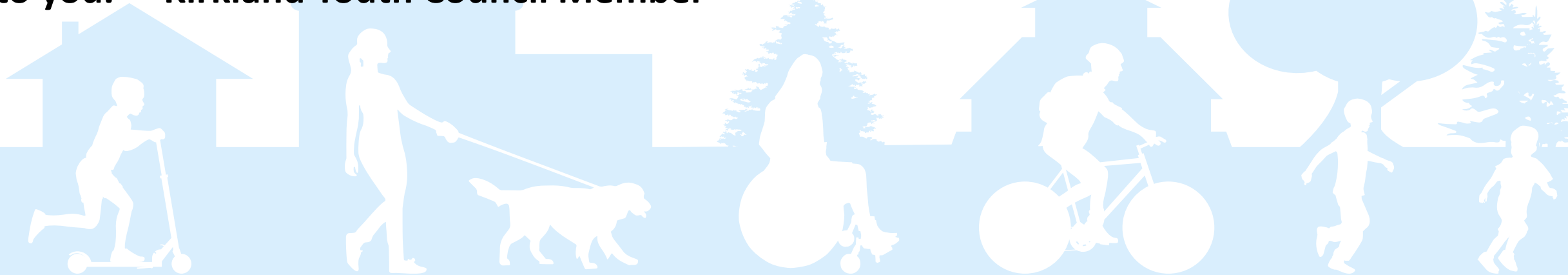


What have we heard so far?



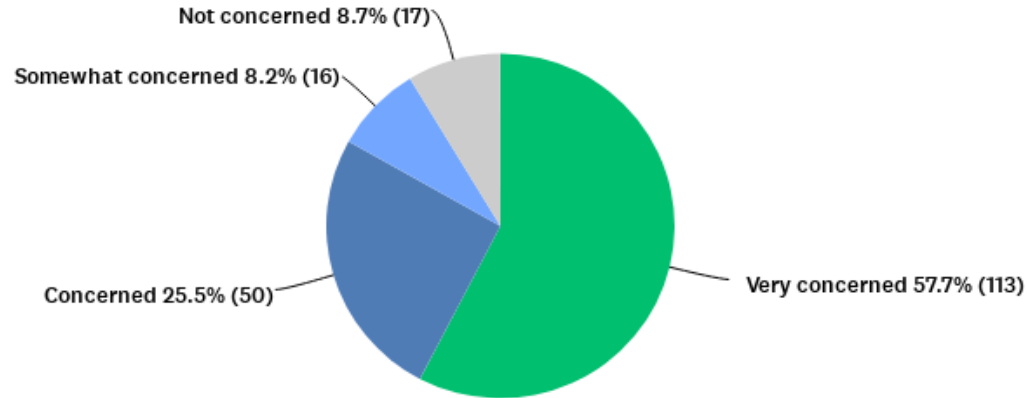
"The tree canopy cleans the air and provides shade, yet it is disappearing" - Kirkland Senior Council Member

"It's our future. We don't have the power to put more urgency on these milestones. It's up to you." - Kirkland Youth Council Member



Survey Responses

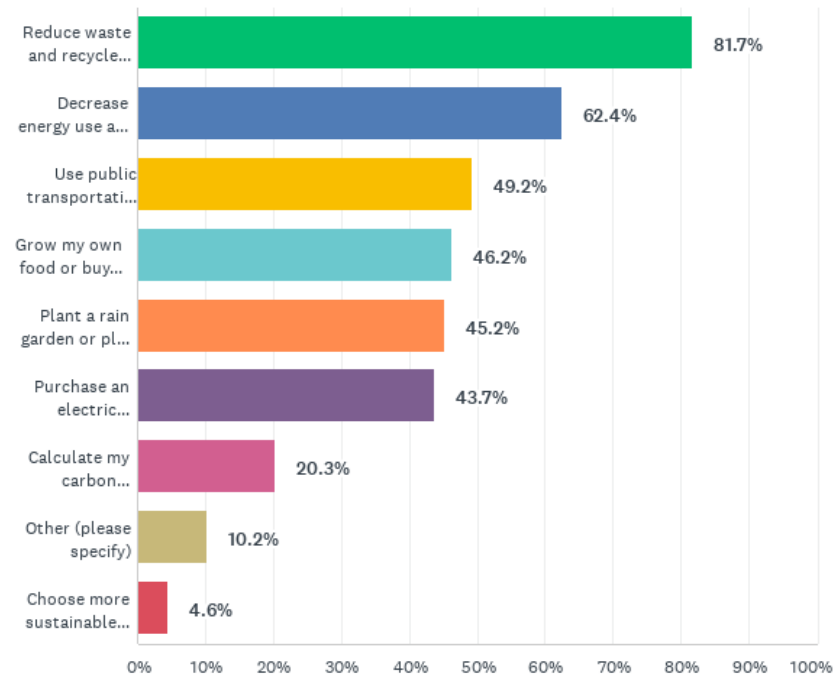
Q14 Overall, how concerned are you about the impacts that climate change will have on your life and family?



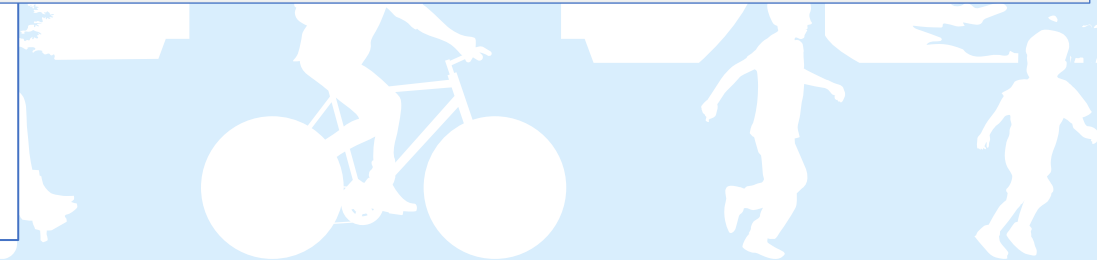
Survey Responses



Q8 What are the top three (or more) actions that you are willing to take or try to reduce your impact on the environment?



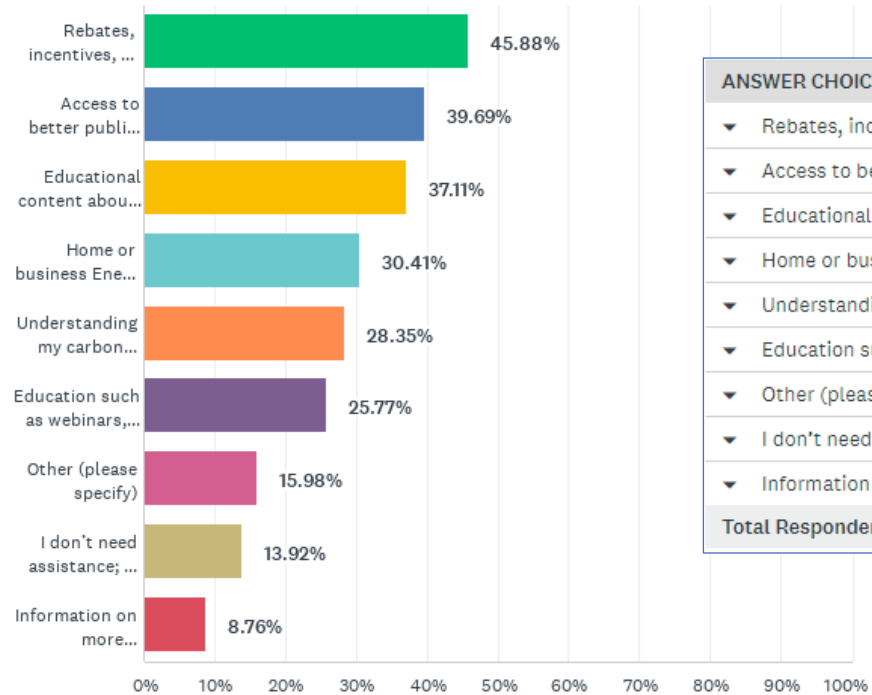
ANSWER CHOICES	RESPONSES
Reduce waste and recycle responsibly	81.7% 161
Decrease energy use at home or business or retrofit them to be more energy efficient	62.4% 123
Use public transportation or ride a bike	49.2% 97
Grow my own food or buy seasonal and local food	46.2% 91
Plant a rain garden or plant native trees	45.2% 89
Purchase an electric vehicle	43.7% 86
Calculate my carbon footprint	20.3% 40
Other (please specify)	Responses 10.2% 20
Choose more sustainable renting options	4.6% 9



Survey Responses



Q9 What assistance, if any, would you need from the City to help you implement these actions? (select all that apply)



ANSWER CHOICES	RESPONSES
▼ Rebates, incentives, or other monetary assistance for electrification	45.88% 89
▼ Access to better public transportation alternatives or ride share programs	39.69% 77
▼ Educational content about sustainable landscaping and tree planting programs	37.11% 72
▼ Home or business Energy Efficiency navigation such as connections with local contractors	30.41% 59
▼ Understanding my carbon footprint and the best ways to reduce it	28.35% 55
▼ Education such as webinars, videos, articles, etc. about urban farming and sustainable food sources	25.77% 50
▼ Other (please specify)	Responses 15.98% 31
▼ I don't need assistance; I have the resources to implement these changes	13.92% 27
▼ Information on more sustainable renting options such as energy-efficient buildings	8.76% 17
Total Respondents: 194	



Climate Action Urgency

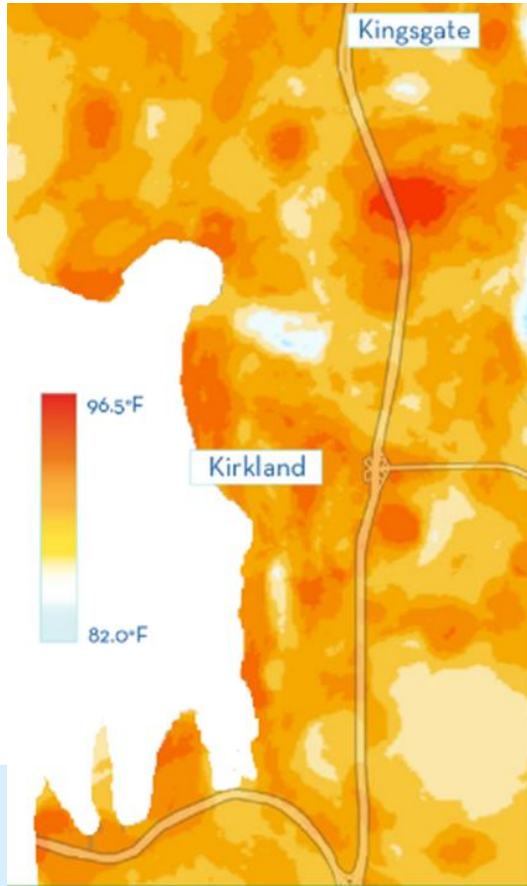


Figure 1. Evening Urban Temperatures - July, 2020

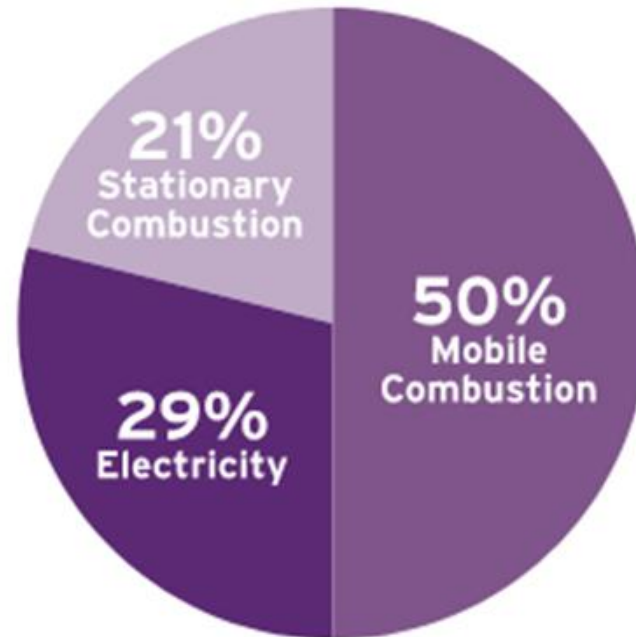


Figure 1. 2017 Kirkland community emissions

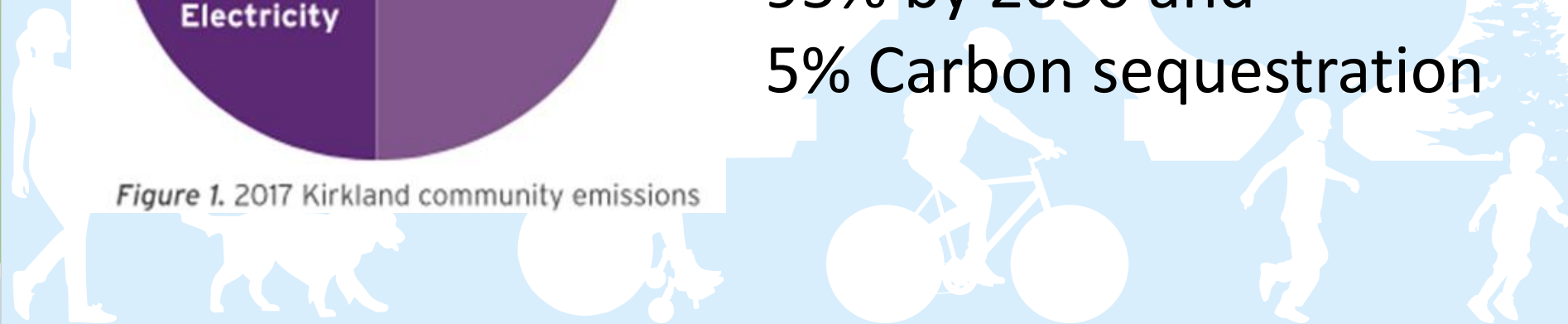
Carbon Emission Reduction Targets

50% Reduction by 2030

75% by 2040

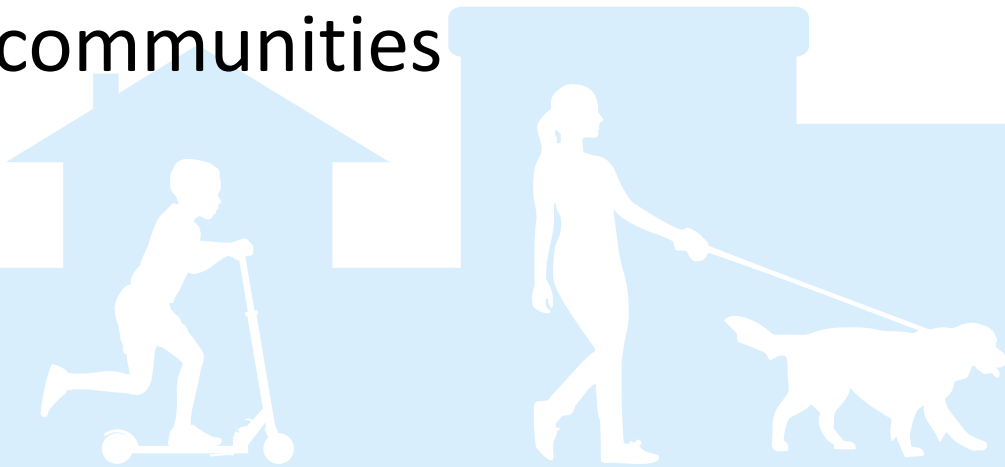
95% by 2050 and

5% Carbon sequestration



What Can We Do?

- Electrify our homes/businesses
- Electrify our vehicles
- Produce Solar Energy
- Design sustainable communities



Goal of Focus Groups



- ❖ **Strengthen and intensify our policies and goals**
- ❖ **Include Priority Populations in this discussion**
- ❖ **Identify gaps or needed additions in element**
- ❖ **Listen to participants and record feedback**
- ❖ **Understand and amplify community priorities**



Exercise 1 – Climate Urgency



- Review select climate related policies in existing element and get feedback
- Guidance for exercise: What changes, if needed can be made to communicate swifter/bolder and stronger action
- Raise hand if you would like to comment
- Miro board will be used to record your comments in real time



Final Thoughts & Next Steps



- ❖ We have the opportunity to rewrite these policies and add new ones
- ❖ Focus Group Session #2 overview
- ❖ Think of something later? Note it in your worksheet.
- ❖ Send your thoughts to David Barnes at dbarnes@kirklandwa.gov

**Take the SCE survey
if you haven't already!**

