

KIRKLAND PARKS & COMMUNITY SERVICES – FEBRUARY 2024



On February 3, Kirkland Parks and Community Services department organized the City's second annual Lunar New Year celebration and the start of the year of the dragon. Lunar New Year marks the first new moon of the lunar solar calendar traditionally used in many East Asian cultures. It starts on the first new moon of the lunar calendar and ends on the first full moon, 15 days later. The holiday signals the arrival of spring and a fresh start.

The Peter Kirk Community was transformed for the celebration with vibrant decorations including dragons, lanterns hanging from the ceiling, and ripe oranges. Participants were welcomed in the lobby with a zodiac animal mask table, where they could learn their zodiac sign based on birth year and pick up their respective animal mask. Participants also received Lunar New Year activity bags and bookmarks.

This celebration offered different activities for all community members. There was an educational gallery where visitors could learn about the celebration and traditions of this holiday. There were two craft rooms where young participants could build dragon puppets, origami shapes, a lucky cat cup, and other crafts. Light refreshments such as lumpia, almond cookies, fortune cookies, and lucky candy were given out.

The event also held a live installation, where participants could trace their hand and help build a dragon art piece. There was also a beautiful selfie station which served as the backdrop for so many fantastic memories.

Thanks to the Seattle Chinese Arts Group, participants enjoyed a 30-minute performance that consisted of waist drum, cheongsam dance, Mongolian dance, and Peking opera. The closing performance featured a traditional lion and dragon dance performed by Northwest Kung Fu and Fitness.

The event exceeded all expectations, with over five hundred people in attendance! This cultural celebration was planned by the recreation events team with help from Xiaoning Jiang, Julie Underwood, and many community volunteers. Overall, it was a resounding success and staff look forward to planning the third annual Lunar New Year in 2025.



ADMINISTRATION

POST-PROPOSITION 1 EVALUATION

Following the rejection of Kirkland Proposition 1 in November of 2023, City Council directed staff to explore why Proposition 1 failed. Staff launched a community engagement process in February to collect both qualitative and quantitative information to gather insights regarding the ballot failure and the community's priorities for the future. During the March 1 City Council Retreat, the results from the representative survey (600 responses), open link survey (1400+ responses), and feedback from sessions with Senior Council, Youth Council, and several focus groups were presented to City Council. The community continues to articulate a need for an indoor pool; however, there is currently an intense concern regarding any increase in taxes.

PARK OPERATIONS & MANAGEMENT

Spring is nearly here; and all the teams are scrambling to wrap up winter projects to be ready when the sun, flowers, grass, and visitors show up in full force! Here are February highlights from our four crews:

BALLFIELDS/CEMETERY

- Installed mounds in the ballfields at Everest Park for the start of spring ball season.
- Prepared irrigation systems for spring start up.
- Spiked and dragged the fields at Crestwoods and Everest parks.
- Painted the dugouts at Everest Park.
- Grubbed and hand weeded the fence lines at Crestwoods Park.
- Leveled out the berm near the driveway at Peter Kirk Park.
- Blew leaves and debris from sport courts and pathways at multiple parks.
- Aerated the infields at Crestwoods and Peter Kirk parks.
- Pressure washed the bleachers at Everest and Peter Kirk parks.

HORTICULTURE

- Inspected sequoia and madrone trees at Marina and Heritage parks.
- Pruned hydrangeas and frost damaged plants at Marina and Heritage parks.
- Weeded the tree rings at Forbes and Heritage and mulched tree rings at Spinney and Highlands parks.
- Cleared pathways of goose poop and debris at Marina, Waverly, Spinney, Forbes, Brink, and Houghton parks.
- Pressure washed around the bathrooms at Marsh Park.
- Removed moss from under tables and benches at Rose Hill Meadows, Forbes, Marsh, and Highlands parks.
- Weeded the garden beds at Heritage and Peter Kirk parks.
- Multiple staff completed Integrated Pest Management and CDL training.

NATURAL AREAS/GREEN KIRKLAND PARTNERSHIP

- Welcomed new Groundsperson Owen Donaldson.
- Removed a load of dumped bricks from Ohde Pea Patch.
- Installed emergent plants along the creek at Fisk Family Park.



Decommissioned pumphouse in Juanita Bay Park



Removing the pumphouse from Juanita Bay Park

- Installed a new jobsite box and tools at FH4 Open Space.
- Installed new garbage cans at North Rose Hill Woodlands and Edith Moulton parks.
- Brush cut blackberry at Crestwoods Park to prepare site for manual root removal by volunteers.
- Removed ivy from poplar trees at Yarrow Bay Wetlands.
- Transplanted shore pine tree to more wooded location at Carillon Woods.

SUPPORT

- Removed construction debris and installed topsoil, mulch, and logs from the old pumphouse at Juanita Bay East.
- Repaired fencing at McAuliffe Park.
- Cleaned and moved extra playground equipment to long term storage location at McAuliffe Park.
- Cleared debris from pool decks, roofs, and gutters.
- Replaced faucets at Edith Moulton and South Rose Hill parks.
- Repaired boardwalk rails damaged by trees at Juanita Bay Park.
- Repaired water service at the meter at Houghton Beach Park.
- Replaced the lights and switches at the Forbes House basement.



Spreading soil after the Juanita Bay pumphouse removal

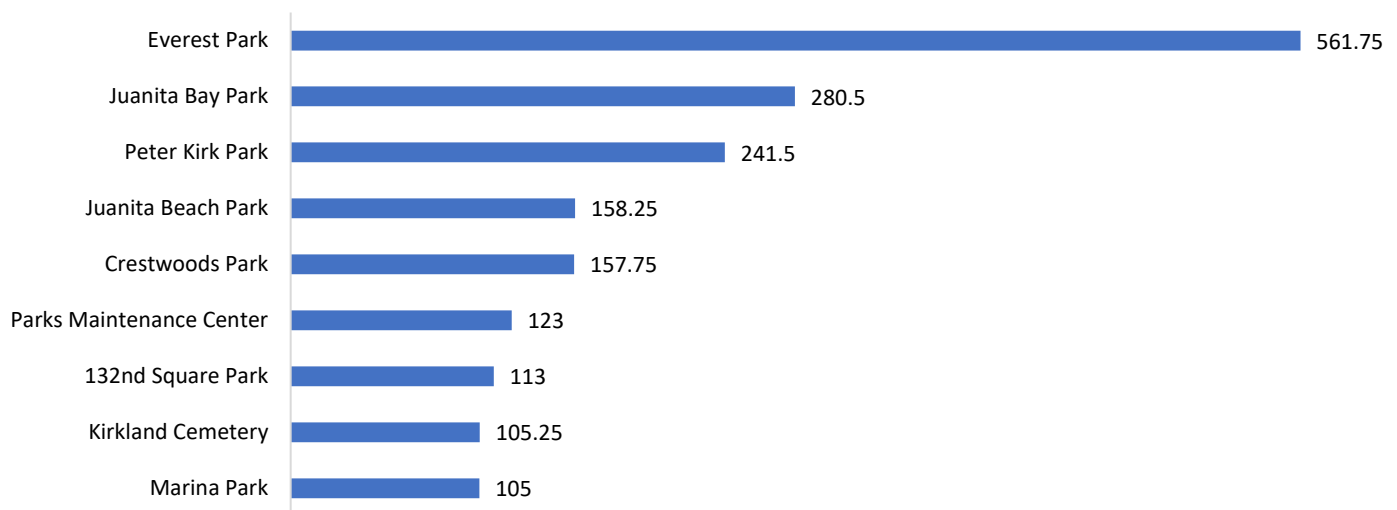


Site of the former pumphouse at Juanita Bay Park

UPCOMING EVENTS

- The Green Kirkland Partnership is hosting 15 events in March. Visit WWW.GREENKIRKLAND.ORG to sign up.
- The new Parks Beautification Program is hosting four volunteer events in March. Visit THE PARKS BEAUTIFICATION WEBSITE to sign up.

Top Parks by Task Hours - February 2024



PARK PLANNING & DEVELOPMENT

Below is a high-level summary and status update of the active Park Planning and Development projects. Please visit the Park Planning and Development [WEBSITE](#) to learn more about these projects.

EVEREST PARK PLAY AREA AND ADA ENHANCEMENTS

Everest Park playground has been identified as the next playground to be replaced for the benefit of the community. Staff plans to release a Request for Proposal for professional services in Spring 2024 to design the playground and connect accessible pathways.

Background of the Project: This ongoing capital project strives to replace aging playgrounds, improve sports courts, and make ADA improvements in the parks throughout the system.

HOUGHTON AND EVEREST RESTROOM REPLACEMENT

The restroom building at Houghton Beach Park is planned for replacement. During the scoping process, staff identified opportunities to analyze the building's current location and potential for programmatic improvements. Staff has contracted with a consultant to develop preliminary 10% design options and costing for further consideration. Design is underway.

The restroom building at Everest Park is planned for design in 2024 and construction in 2025 due to its age and condition. Staff has contracted with a consultant to develop design and construction drawings. Design is underway.

Background of the Project: This capital project repairs or replaces park restrooms in the system. Restrooms at Houghton Beach and Everest parks have been identified for replacement due to their age and condition.



Current restroom building at Houghton Beach Park

MARINA PARK SHORELINE RENOVATIONS

The project has been refined to focus on repairs to the south fingers and pier along with a few upland repairs and improvements. Staff is now working with the consultant to develop the next contract for the next phase of design work.

Background of the Project: Shoreline structures at Marina Park were evaluated and identified for repairs in the 2019 Kirkland Shoreline Structures Assessment Report. In late 2022, a portion of the sidewalk and stairs at Marina Park experienced significant subsidence.

O.O. DENNY PARK PICNIC SHELTER

A new additional picnic shelter has been designed. This design currently mimics the existing shelter and will add capacity for the community. The project is currently in permitting.

Background of the Project: Addition of a picnic shelter using funds transferred from the dissolved Finn Hill Park District.

RECREATION SERVICES

GALENTINE'S DAY

On February 11, the North Kirkland Community Center hosted a Galentine's Day event, a fun-filled day of supporting local women entrepreneurs. Attendees found amazing products and services from at least 15 local women-owned businesses, ranging from permanent jewelry to upcycled clothing.

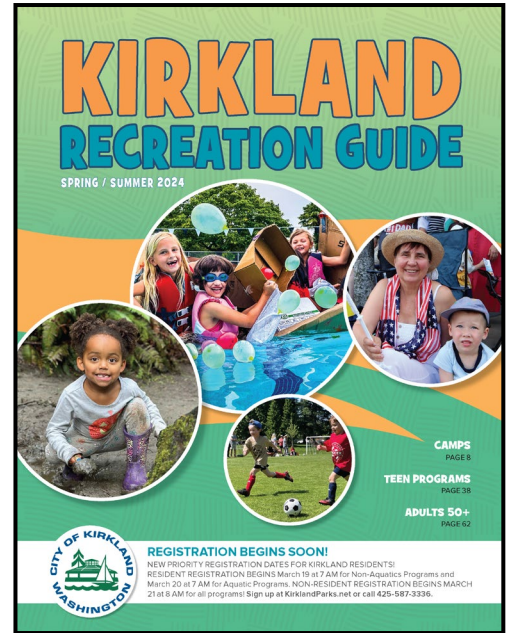
LIL HOOPERS

The second year of our Lil Hoopers basketball program wrapped up on February 24 at Finn Hill Middle School. This program introduces youth in Kindergarten, 1st and 2nd grade to the game of basketball in a fun atmosphere.

RECREATION ACTIVITY GUIDE

Staff finalized the Spring/Summer 2024 Recreation Activity Guide at the end of the month. The guide will be mailed to all Kirkland residents in early March and posted online at WWW.KIRKLANDWA.GOV/RECREATIONGUIDE. Registration for Spring and Summer programs will open on March 19, 2024 using a phased approach.

- Kirkland resident registration for camps and non-swim programs opens March 19, 2024 at 7:00 AM
- Kirkland resident registration for swimming, pool rentals and all aquatic programs opens March 20, 2024 at 7:00 AM
- Registration for all non-residents opens March 21, 2024 at 8:00 AM



SPECIAL EVENT SERVICES



Special Event Services provides a portfolio of services designed to support Kirkland's neighborhoods, as well as the city's special event, business, and film production industries. Through a one-stop permitting process, dedicated staff assist with all aspects of an event that relate to the use of public property.

Staff support activities listed below through permitting; coordination with other City departments for street closures, Fire and Police support, safety and sanitary regulations, and banners; City facility use such as parks, parking lots, and streets, evening and weekend on-call logistical support; and communication with the public. Learn more at KIRKLANDWA.GOV/SPECIALEVENTS.



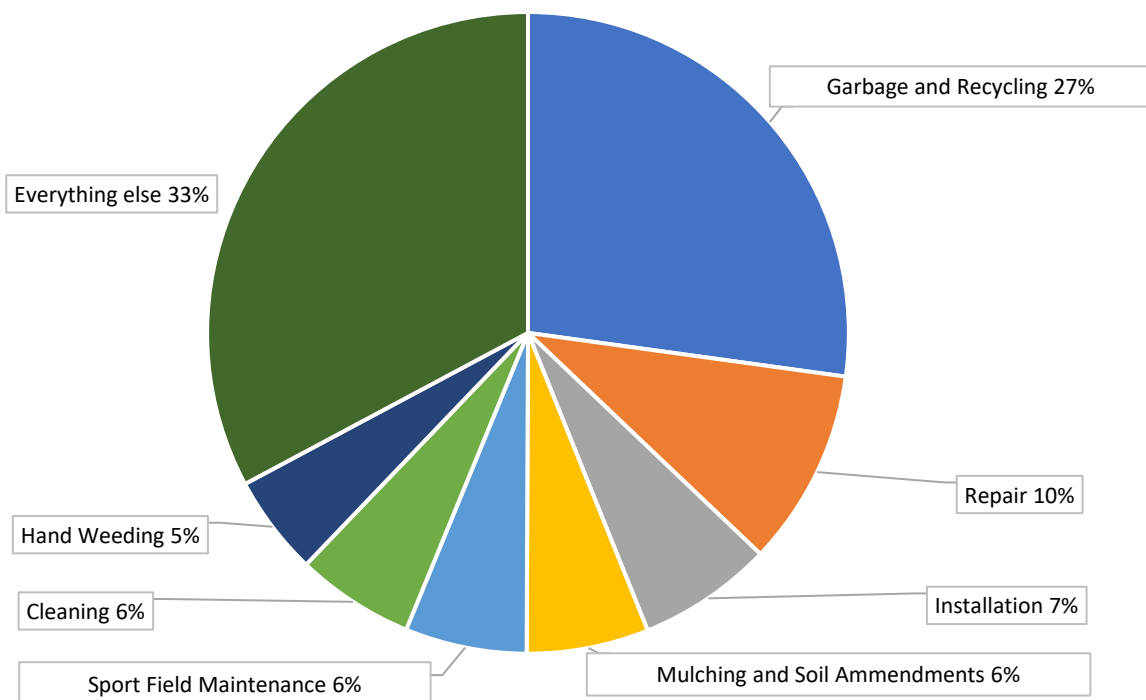
UPCOMING EVENTS

DATE	EVENT	LOCATION	OTHER INFO
Sunday, March 17	Kirkland Shamrock Run	Juanita Beach Park	srcshamrockrun.com
Sunday, March 24	Nowruz Celebration	Marina Park	www.isows.org
Sunday, March 31	Easter Egg Hunt	Peter Kirk Park	k03048.site.kiwanis.org
Saturday, April 27	Oral Cancer Awareness Walk	Juanita Beach Park	oralcancerfoundation.org
Sunday, April 28	Beltane Festival	Juanita Beach Park	www.pnwwitchesmarket.com

PARKS MAINTENANCE DATA**LABOR HOURS BY TASK**

Task	Hours
Beach Maintenance	30.75
Brush Clearing	75.75
Cemetery and Burial Services	41.5
Cleaning	185.25
Contracted Crew Restoration of Natural Areas	3.75
Edging and Line Trimming	28.25
Equipment Maintenance	108.5
Event Support	25.5
Garbage and Recycling	845.5
Hand Weeding	156.75
Inspection	66.75
Installation	211.75
Inventory Management	6
Leading	6.5
Leaf Removal and Blowing	133.5

Task	Hours
Mowing	10.5
Mulching and Soil Amendments	191.5
Nursery Management	11.25
Outreach and Education	2
Planting	48
Pool Maintenance	29
Pruning	125.5
Repair	308.75
Restroom Cleaning	127
Snow Removal and De-Icing	1.5
Sport Field Maintenance	190.75
Tree Inspection and Inventory	4.5
Tree Removal and Chipping	45
Turf Repair and Maintenance	83.5
Winterization and Spring Start Up	6
GRAND TOTAL	3,110.75

February 2024 Tasks

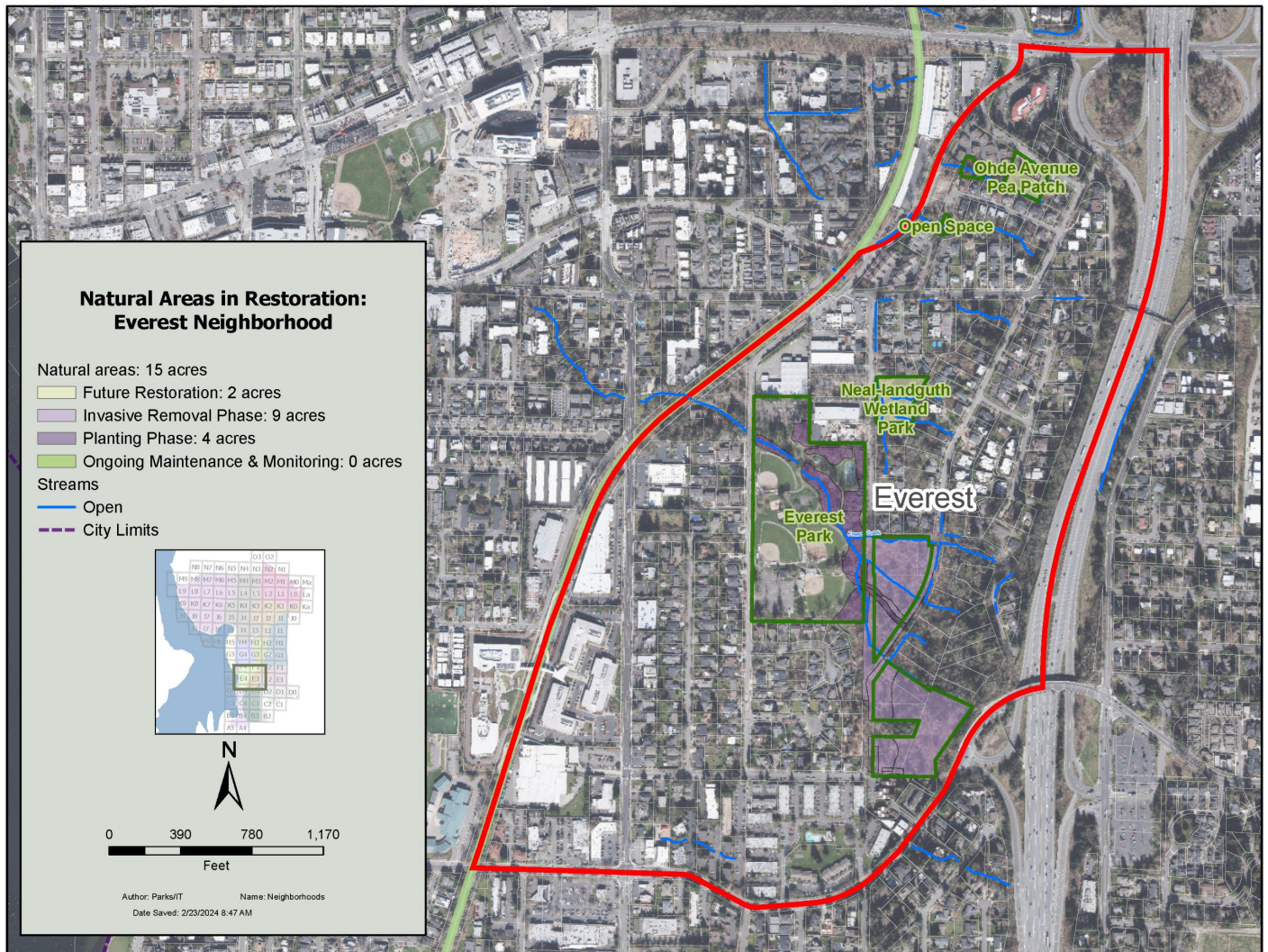
PARKS MAINTENANCE LABOR HOURS BY PARK

Park/Location	Hours
132nd Square Park	113
2nd Avenue South Dock	3.25
Ben Franklin Elementary School Field	5.25
Brookhaven Park	3
Bud Homan Park	1.75
Carillon Woods	10.75
Cedar View Park	4.5
CKC	3.25
Cotton Hill Park	1.5
Crestwoods Park	157.75
David E. Brink Park	65.75
Doris Cooper Houghton Beach Park	74
Edith Moulton Park	38.5
Emerson High School Field	3.25
Everest Park	561.75
FH4	4.5
Finn Hill Middle School Field	15.25
Fire Station 24	0.25
Fisk Family Park	59
Forbes Creek Park	41.25
Forbes Lake Park	3.75
Hazen Hills Park	2.5
Heritage Park	94.75
Heronfield Wetlands/Jasper's Dog Park	5.5
Highlands Park	18.25
Josten Park	9
JU1	16.25
JU4	4
Juanita Bay Park	280.5
Juanita Beach Park	158.25
Juanita Elementary School Field	6.5
Juanita Heights Park	1.5
Kingsgate Park	2.5
Kirkland Cemetery	105.25
Kirkland Middle School Field	7.75
Kiwanis Park	5.25

Park/Location	Hours
Lake Ave W Street End Park	9.25
Lakeview Elementary School Field	3.5
Marina Park	105
Mark Twain Elementary School Field	4
Mark Twain Park	18.25
Marsh Park	84.25
McAuliffe Park	70.5
North Kirkland Com Ctr & Park	23
North Rose Hill Woodlands Park	50.25
O O Denny Park	53
Ohde Avenue Pea Patch	7
Parks Maintenance Center	123
Peter Kirk Elementary School Field	3
Peter Kirk Park	241.5
Peter Kirk Pool	46.5
Phyllis A. Needy - Houghton Neighborhood	53.5
Reservoir Park	6.25
Rose Hill Elementary School Field	3.75
Rose Hill Meadows	29.25
Rotary Central Station	1.75
Settler's Landing	3
Snyder's Corner Park	16.25
South Norway Hill Park	3
South Rose Hill Park	46
Spinney Homestead Park	25
Terrace Park	4
Tot Lot Park	32.75
Totem Lake Park	60
Van Aalst Park	11
Watershed Park	11.75
Waverly Beach Park	52.5
Windsor Vista Park	17.25
Yarrow Bay Wetlands	2.75
GRAND TOTAL	3110.75

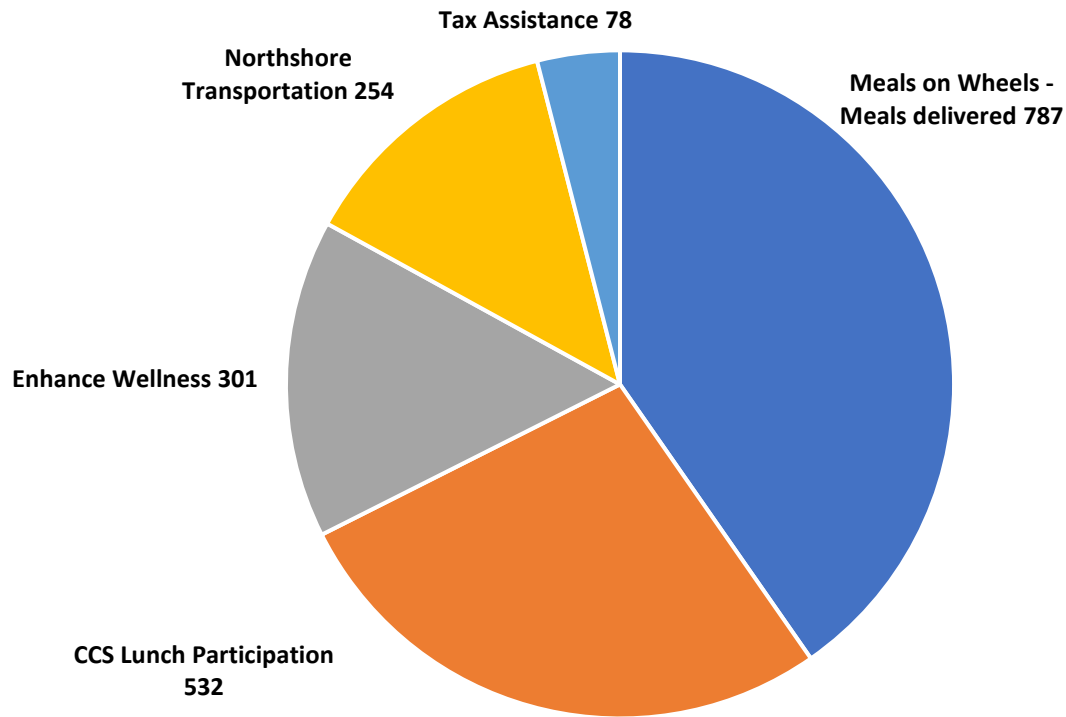
GREEN KIRKLAND PARTNERSHIP DATA

Green Kirkland currently has 35 active natural parkland sites in the City of Kirkland and has enrolled over 315 acres in restoration. Here are the 2024 statistics for the Everest neighborhood.



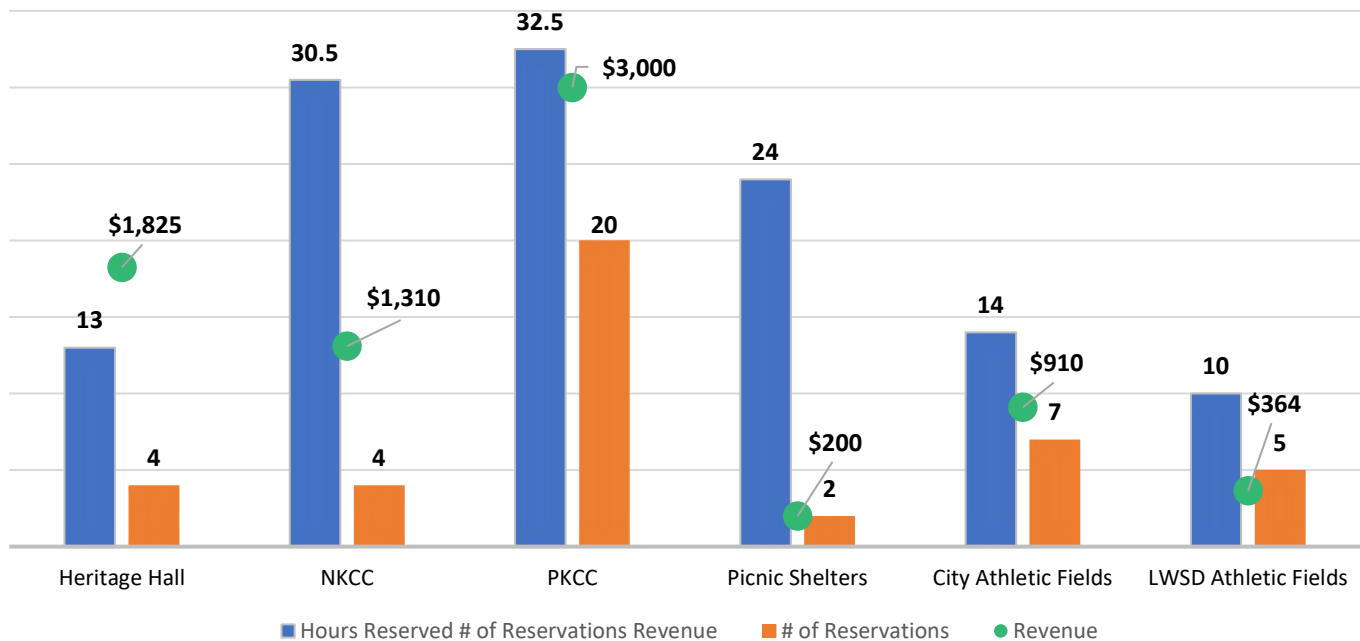
RECREATION DATA

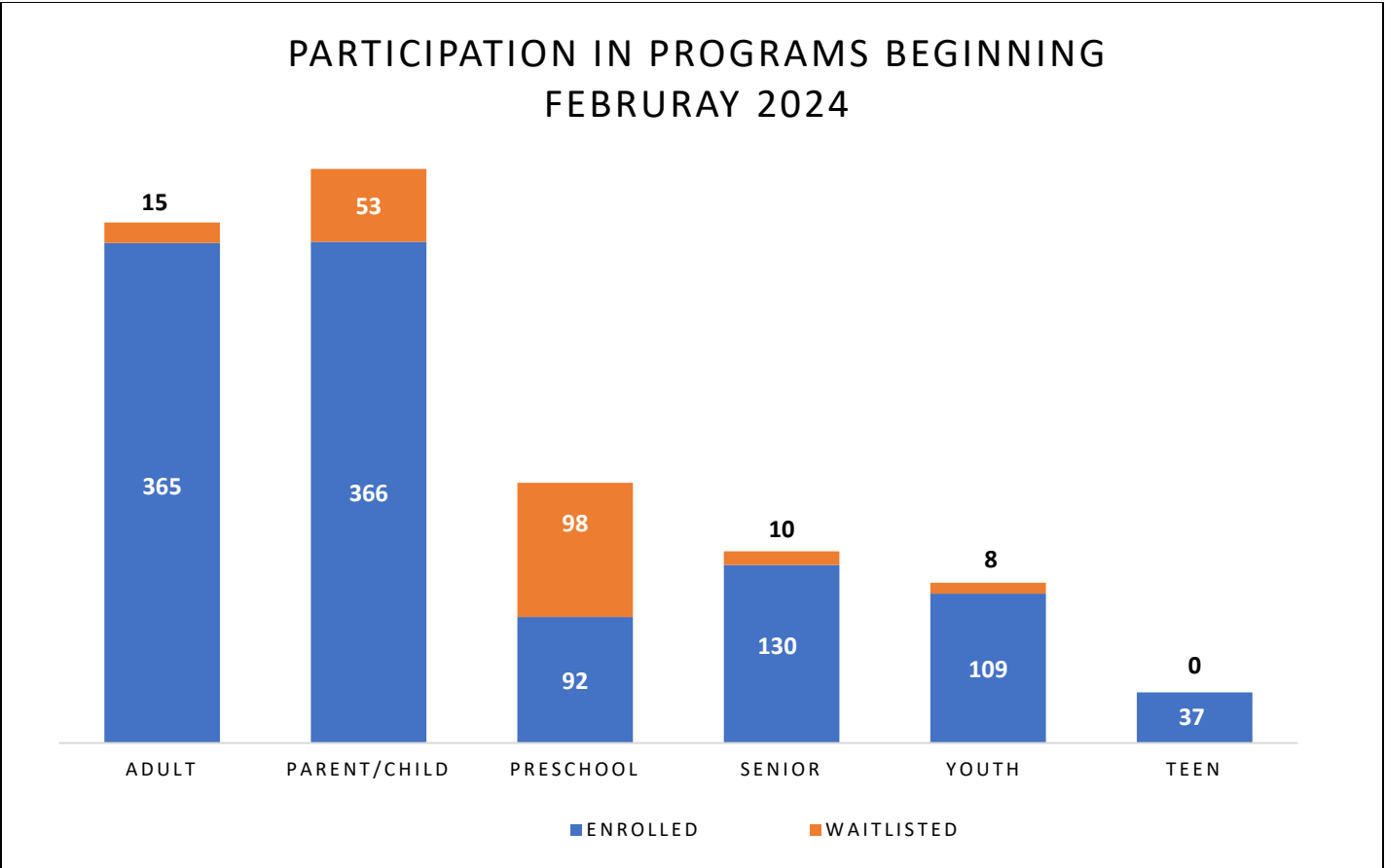
SENIOR SERVICES - JANUARY 2024



**Senior Services Data reported by agencies the month after services provided*

ALL RENTALS - FEBRUARY 2024





RECREATION SCHOLARSHIP DATA

Recreation Scholarships		
	Current Month	YTD
Applications approved	11	18
Donation funds used	\$354.20	\$829.74
Donation funds received	\$50.00	\$139.00