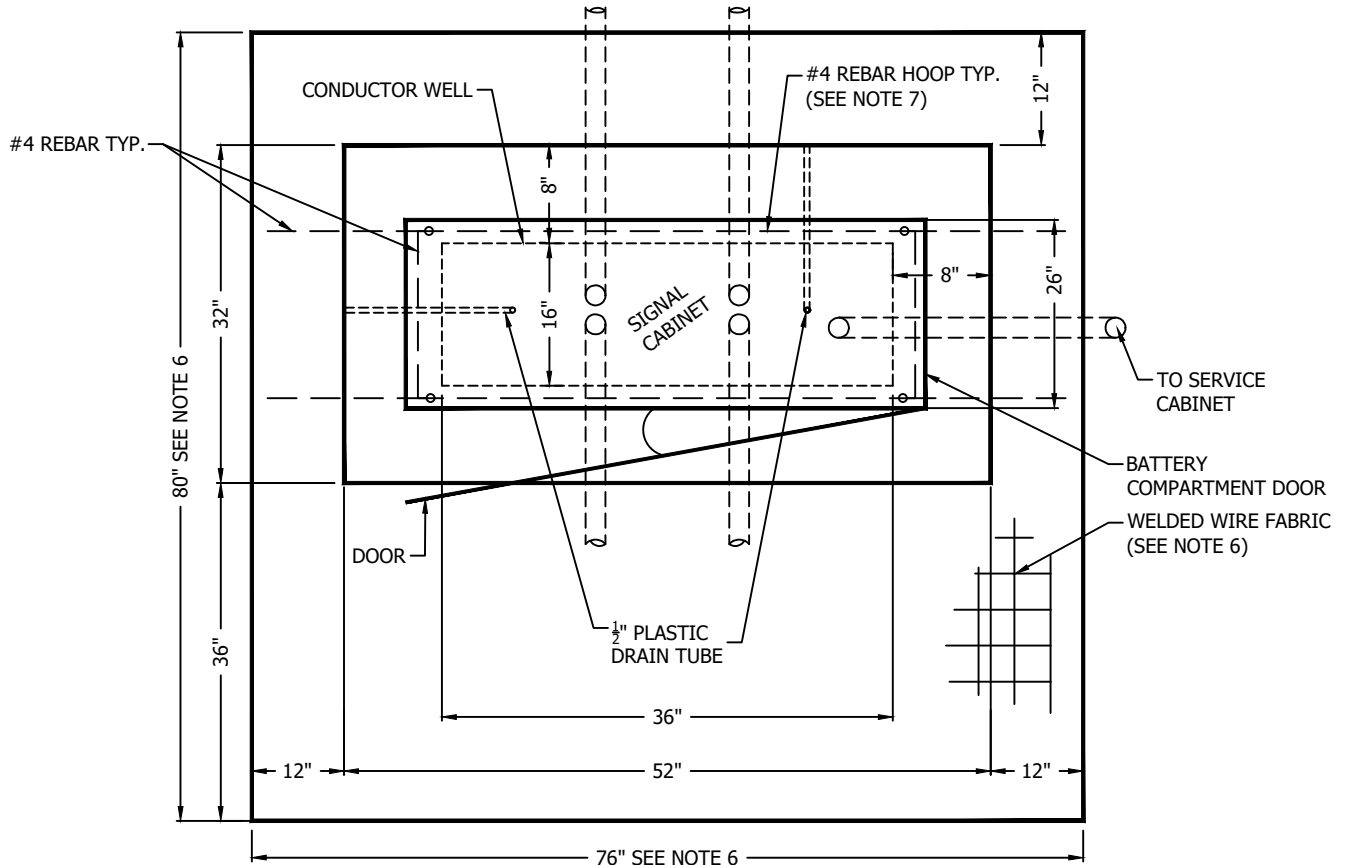


ELEVATION VIEW



PLAN VIEW

NOTE:

1. CONTRACTOR TO VERIFY BOLT PATTERN WITH CABINET.
2. CONTRACTOR SHALL PROVIDE A MINIMUM CLEARANCE OF 48 INCHES FROM FRONT FACE OF CABINET TO ALLOW FOR DOOR SWING AND WORKING SPACE. CONTRACTOR SHALL HAVE A MINIMUM 4-FOOT OFFSET FROM ANY OBSTRUCTIONS SUCH AS A WALL TO ALLOW FOR FUTURE MAINTENANCE.
3. CONTRACTOR SHALL PROVIDE A MINIMUM OF FOUR (4) 3" CONDUITS AND ONE (1) 2" CONDUIT INTO THE NEAREST JUNCTION BOX.
4. CONTRACTOR SHALL INSTALL CABINET GROUNDING PER WSDOT STANDARD PLAN J-60.05.
5. CONTRACTOR SHALL POUR FOUNDATION TO BE SMOOTH AND LEVEL TO ENSURE PROPER OPERATION OF CABINET. ALL CONCRETE CORNERS SHALL HAVE A 1" CHAMFER, UNLESS ABUTTING SIDEWALK, WHERE IT SHALL BE SQUARE AND SEPARATED FROM THE SIDEWALK WITH JOINT FILLER.
6. CABINET HOUSEKEEPING PAD SHALL BE MINIMUM DIMENSIONS SHOWN, FLAT, UNCONSTRAINED BY OTHER STRUCTURES, AND OUTSIDE OF LOW POINT AREAS WHERE STORMWATER COLLECTS. WELDED WIRE FABRIC IN PAD SHALL BE 4" X 4" MEETING THE REQUIREMENTS OF WSDOT STANDARD SPECIFICATION 7-07.7. AS AN ALTERNATIVE, A GRID OF #3 REBAR MAY BE USED, WITH BARS SPACED AT 12" CENTERS LATERALLY AND LONGITUDINALLY.
7. ALL REBAR SHALL BE DEFORMED STEEL REINFORCING BAR FOR CONCRETE FOUNDATIONS CONFORMING TO ASTM A615 GRADE 60.

CITY OF KIRKLAND

PLAN NO. CK - TS.03



NEMA CONTROLLER
CABINET FOUNDATION
DETAIL