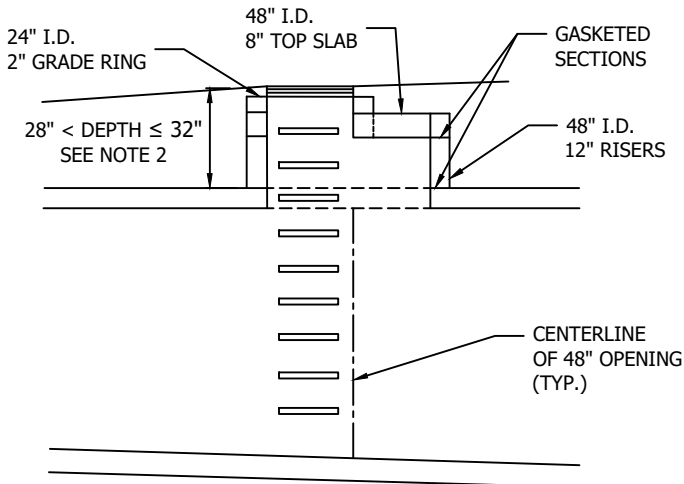
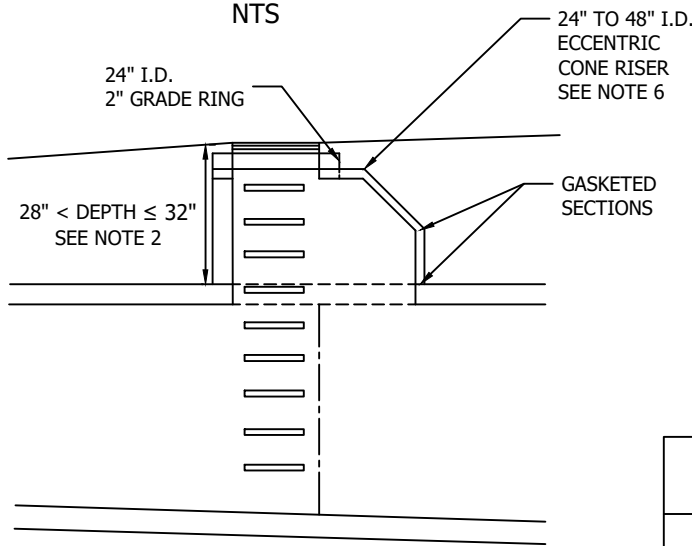


GRADE RINGS ONLY
PROFILE VIEW
NTS



GRADE RINGS, RISERS AND TOP SLAB
PROFILE VIEW
NTS



**GRADE RINGS WITH ECCENTRIC
CONE TRANSITION**
PROFILE VIEW
NTS

NOTE:

1. 24 INCH ACCESS LID SET ON REDUCER ATOP 36 INCH GRADE RINGS TO BE USED WHEN DEPTH TO VAULT OPENING IS 28 INCHES OR LESS FROM THE SURFACE.
2. TRANSITION TO 48 INCH ACCESS TO BE USED WHEN DEPTH TO VAULT OPENING IS GREATER THAN 28 INCHES FROM THE SURFACE. FOR DEPTHS BETWEEN 28 INCHES AND 32 INCHES, USE COMBINATION OF RISERS AND TOP SLAB. FOR DEPTHS GREATER THAN 32 INCHES, USE ECCENTRIC CONE TRANSITION.
3. REFER TO MANUFACTURER FOR HOW ACCESS RISERS AND TOP SLAB SHALL BE STRUCTURALLY SUPPORTED.
4. REFER TO CK-D.18, CK-D.18A, AND CK-D.18B FOR APPROPRIATE 24 INCH ACCESS CASTING.
5. BOND FROM ACCESS RISERS, GRADE RINGS, OR CONE TO VAULT SHALL BE WET SET IN 3/4" NON-SHRINK GROUT. GROUT BETWEEN ALL JOINTS (NO JETSET OR SPEED CRETE RED LINE GROUT). ALL SURFACES MUST BE CLEAN OF DEBRIS AND DIRT, AND WETTED PRIOR TO GROUTING. GROUT SMOOTH INSIDE AND OUTSIDE SURFACE PRIOR TO BACKFILL.
6. MUST BE ECCENTRIC CONE. CONCENTRIC CONE IS NOT ALLOWED.

CITY OF KIRKLAND

PLAN NO. CK - D.35A



**VAULT
ACCESS**