

YOU BELONG HERE

Safe – Connected – Multimodal

Kirkland 2044 Transportation Plan Update

September 28, 2023
Planning Commission



Agenda



- Kirkland Transportation Plan (KTP) Update Overview and Major Elements
- Community Engagement
- Guiding Principles
- Draft Proposed Goals
- Next Steps

Overview



- First adopted in 2015
- 20-year planning horizon (2024 - 2044) consistent with the Comprehensive Plan
- Addresses existing and future conditions considering all modes of travel such as walking and rolling, bicycling, riding transit, and driving

Overview



Two technical functions

1. Serves as the Transportation Element of the Comprehensive Plan. The goals, policies, and project list are the primary content.
2. As a 'stand-alone' plan, it expands upon the Comprehensive Plan with more detail, context, and background to support the goals and policies

TMP Update Work

- Reaffirm modal priorities:
 1. Pedestrians
 2. Bicyclists
 3. Transit
 4. Motor Vehicles
- Incorporate the Safe Systems Approach from the Vision Zero Action Plan and Kirkland's Complete Streets policy
- Integrate existing modal plans and studies
- Address emerging topics

TMP Major Elements



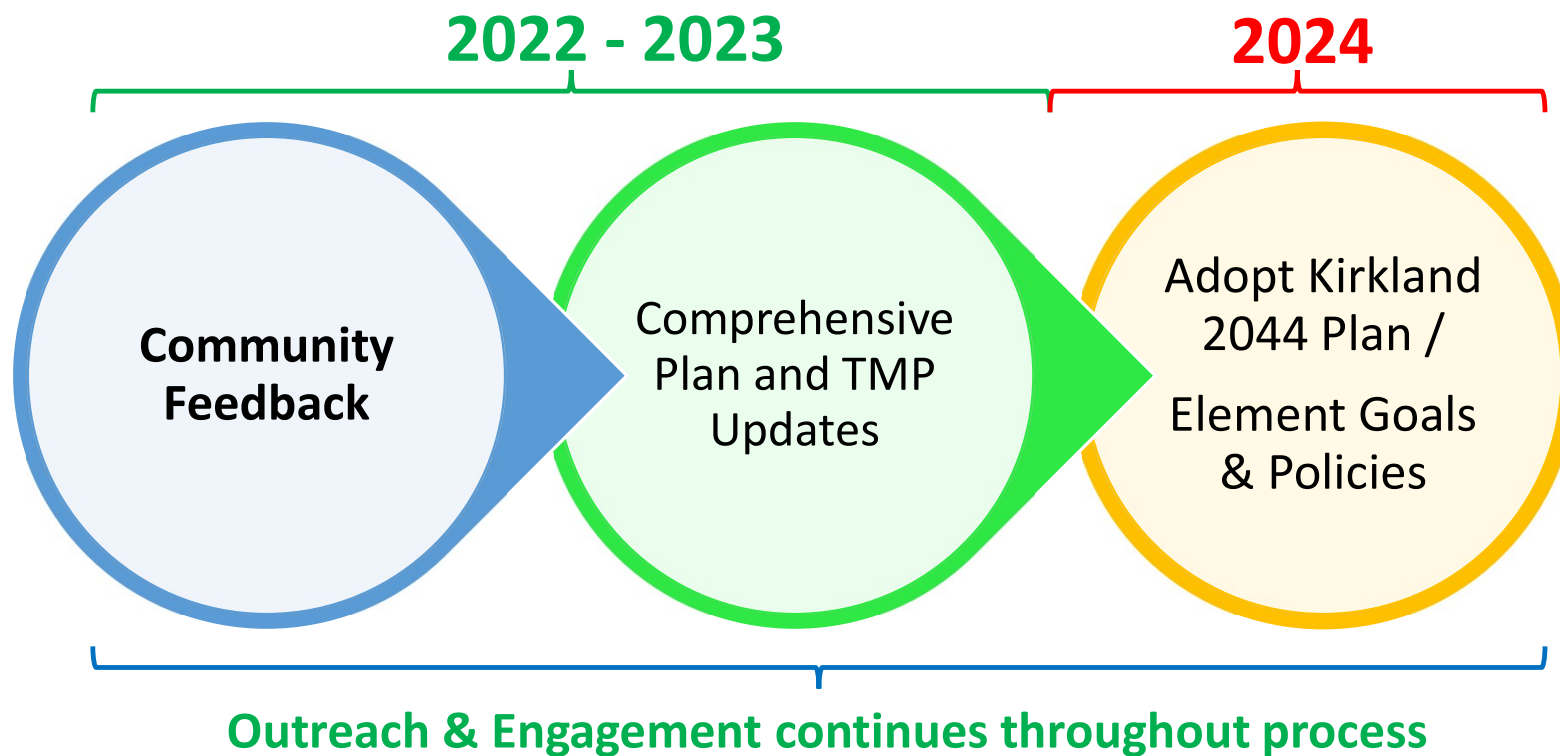
- Existing and Future Conditions
- Guiding Principles, Goals, Policies, and Actions
- Multimodal concurrency to support ambitious mode-split goals
- Multimodal transportation modeling and alternatives analysis to evaluate the performance of the transportation network and land use plan
- A fiscally constrained project list that includes cost estimation, prioritization, and financial forecasting / balancing
- An update to the performance measures and monitoring program

New / Emerging Topics



- Greater emphasis on safety
- Greater emphasis on equity and sustainability
- Curb management
- Technology and innovation (link with SMART Cities)
- Flexible transit
- Freight and truck movements
- Micro-mobility

Where are we in the process?



Community Engagement

Community Engagement Activities



- Coordination with Planning on the Community Engagement Plan and Visioning event
- Incorporating feedback from the Equity Review Report
- Coordinated Land Use and Transportation outreach with the survey, focus groups and presentations to community groups, tabling
- Lake Washington High School class project
- Transportation only outreach such as project website, virtual Community-wide meeting, handouts, etc.
- Transportation Commission workshops

Focus Groups: What we heard



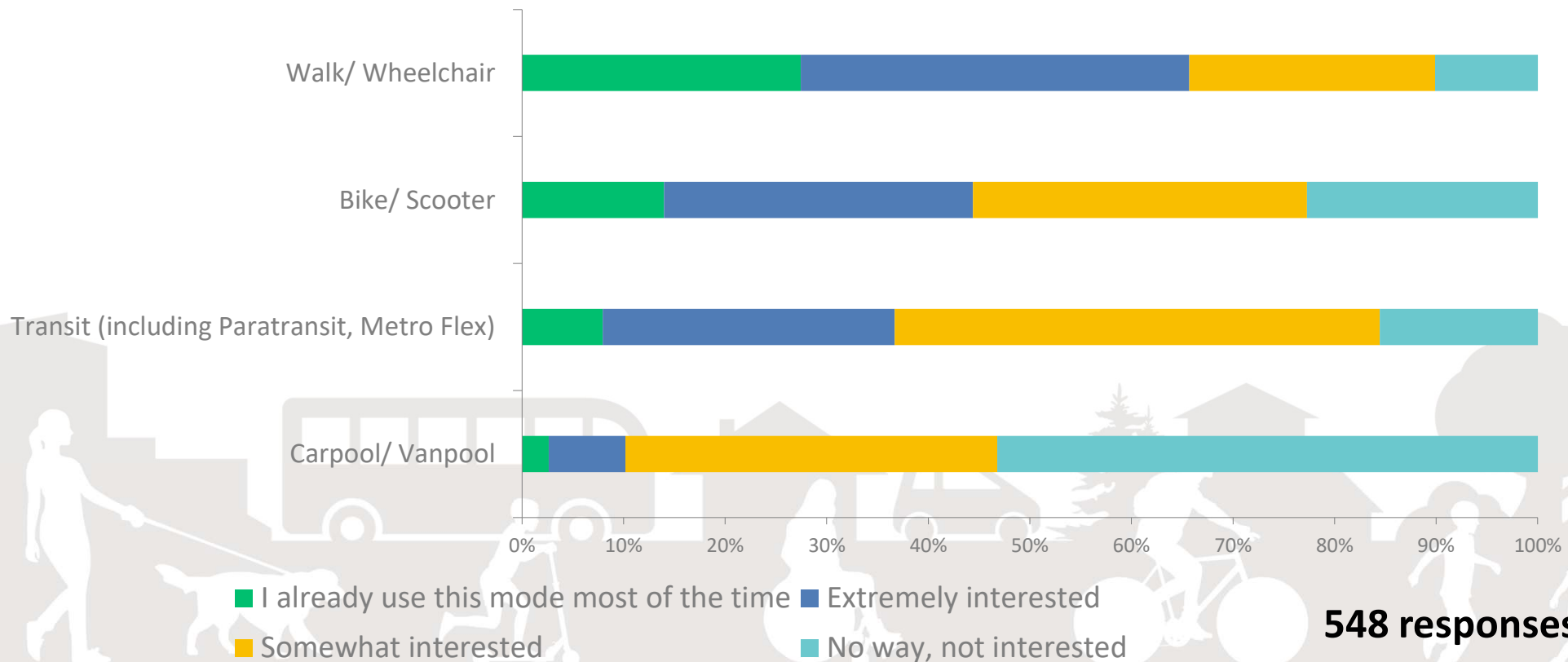
YOU BELONG HERE

Safe - Connected - Multimodal

Transportation Plan Update



Survey: How willing or interested are you to take other types of modes for transportation?



548 responses

Community Engagement – Next Steps

- The first round of engagement informed the guiding principles which then informed the goals and policies update
- Next round of community engagement will be to share the proposed projects and discuss how we prioritize them
- The final stage of the engagement process will be in the form of the draft plan

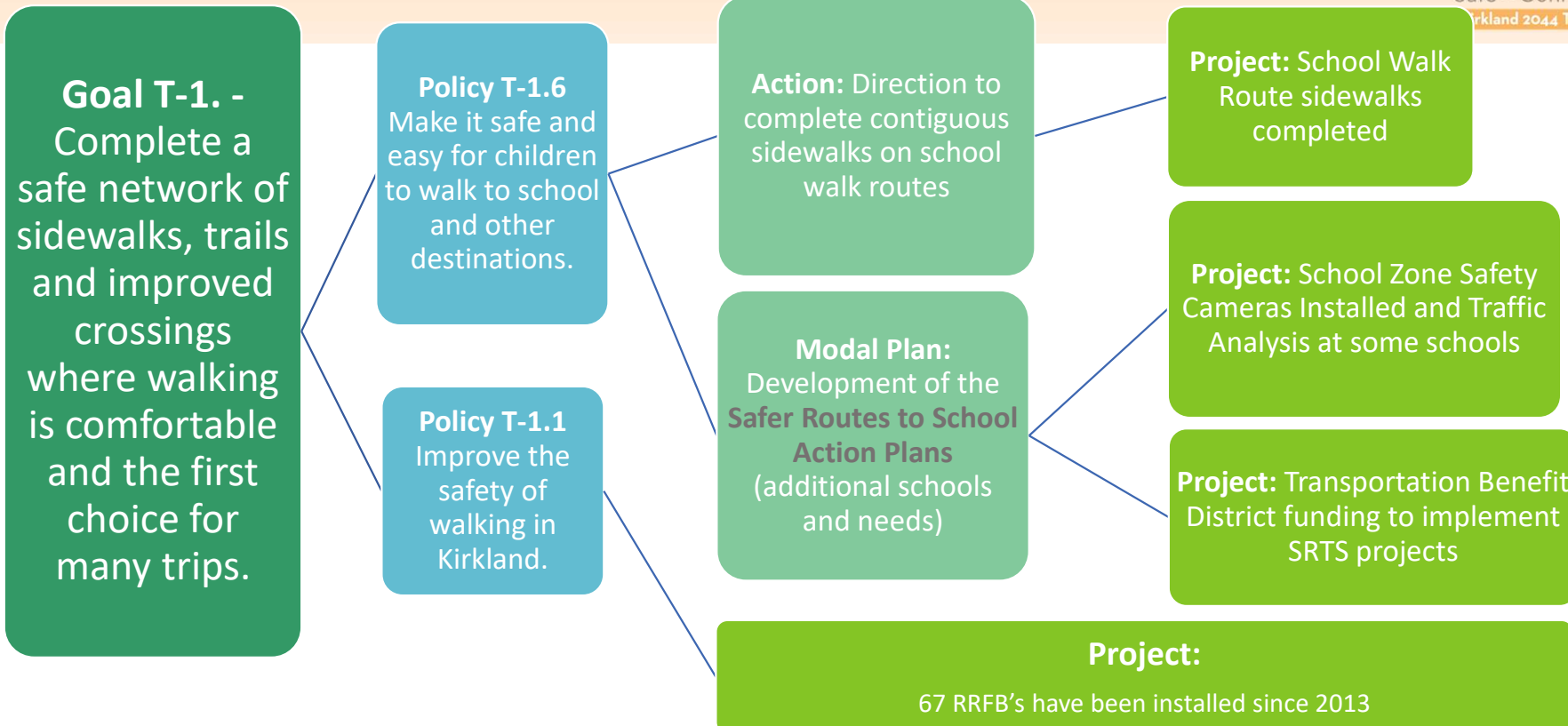
Guiding Principles

Guiding Principles



2015 TMP	Updated based on community feedback
Safely Move People	Safety
Be Sustainable	Sustainability
Link to Land Use	Create a More Equitable and Multimodal Transportation System for All Users
Be an Active Partner	Innovation and Electrification

Putting it into practice



Update to TMP Goals



Building on Success!

- The 2015 TMP provides a solid foundation of goals and policies
- Update to goals and policies will:
 - Reflect progress made
 - Consider emerging topics and practices
 - Reflect what we heard from the engagement process

Update to TMP Goals



Safety

Active Transportation

Public Transportation

Vehicle Network Management

Link to Land Use

Equity

Sustainability

Be an Active Partner

Technology and Emerging Practices

Maintenance

Council input from Sept. 19 Study Session



- Need to be proactive about transit service
 - Strong link with active transportation (first and last mile)
 - Proactive with Metro about our service
 - Consider potential for third-party or alternatives services [more research needed]
- Safety as a first lens with capital improvements
 - Roundabouts default unless deemed infeasible with new / improved intersections
 - Protected bike lanes first choice in design
 - All projects in right-of-way and developer projects should be evaluated for safety
 - Strengthen standards and guidelines

Council input from Sept. 19 Study Session



- Reflect the goals in the Sustainability Master Plan
- Outreach should include people who don't live in Kirkland
- Partner with private properties on parking lot safety
- Equity analysis should not be dependent on existing land use, demographics

Discussion



- Does the Commission have any questions about the elements or topic areas for the KTP? Is there anything missing that has not been mentioned?
- Does the Commission have any comments or direction related to the presented topic areas?

October 25th Joint Meeting with Transportation Commission



- Review Link to Land Use goal and policies for commission feedback
- Present options and recommendations for the prioritization measures for capital projects for discussion

Is there anything else the Planning Commission would like to cover at the joint meeting?

Next Steps



Staff will continue to work with the Transportation Commission including a joint meeting with the Planning Commission on October 25th.

Future Council topics will include:

- Updated goals and policies
- 20-year fiscally constrained and prioritized project list
- Analysis of existing to future land use and transportation alternatives