



KIRKLAND PARK BOARD REGULAR MEETING

Date: February 10, 2021

Time: 7:00 p.m.

Place: Meeting to be held virtually, via Zoom

The mission of the Park Board shall be to provide policy advice and assistance to the Department of Parks and Community Services and City Council in order to ensure the effective provision of Parks and Community Services programs and facilities to the residents of the City of Kirkland.

AGENDA

1. **CALL TO ORDER**
2. **ROLL CALL**
3. **ITEMS FROM THE AUDIENCE**
4. **APPROVAL OF MINUTES**
 - a. January 13, 2021
5. **BUSINESS ITEMS**
 - a. Chair/Vice-Chair Elections
 - b. Pet Waste Bacteria Monitoring, Outreach, and Education Campaign
 - c. Juanita Beach Park Art
 - d. Park Recreation and Open Space Plan Process Overview
 - e. Neighborhood liaison assignments
6. **COMMUNICATIONS**
 - a. Correspondence
 - b. [Department Monthly Report](#)
 - c. Staff Updates and Information
 - d. Park Board member reports
 - e. Comments from the Chair

Alternate Formats: Persons with disabilities may request materials in alternative formats. Persons with hearing impairments may access the Washington State Telecommunications Relay Service at 711.

Title VI: Kirkland's policy is to fully comply with Title VI of the Civil Rights Act by prohibiting discrimination against any person on the basis of race, color, national origin or sex in the provision of benefits and services resulting from its programs and activities. Any person who believes his/her Title VI protection has been violated, may file a complaint with the City. To request an alternate format, file a complaint or for questions about Kirkland's Title VI Program, contact the Title VI Coordinator at 425-587-3011 or titlevicoordinator@kirklandwa.gov.

The City of Kirkland strives to accommodate people with disabilities. Please contact the City Clerk's Office at 425.587.3190, or for TTY Services call 425.587.3111 (by noon the work day prior to the meeting) if we can be of assistance. If you should experience difficulty hearing the proceedings, please bring this to the attention of the Chairperson by raising your hand.

KIRKLAND PARK BOARD

Minutes of Regular Meeting

January 13, 2021

1. CALL TO ORDER

January 13, 2021, Park Board Regular meeting was called to order at 7:01 p.m. by Chair Susan Baird-Joshi.

2. ROLL CALL

Members Present: Chair Susan Baird-Joshi, Vice-Chair Amanda Judd, Uzma Butte, Tammy Cohen, Roshan Parikh

Members Absent: Richard Chung, Mike Holland

Staff Present: Lynn Zwaagstra, Linda Murphy, Mary Gardocki, John Lloyd, Jason Filan

Recording Secretary: Heather Lantz-Brazil

3. WELCOME/INTRODUCTION OF NEW MEMBERS

Park Board members shared introductions to include what neighborhood they are from and why they wanted to serve on the Board. Staff also provided brief introductions.

4. ITEMS FROM THE AUDIENCE

Shelli Craig

5. APPROVAL OF MINUTES

Mr. Parikh moved to approve the February 12, 2020 meeting minutes. Motion seconded by Ms. Judd. The motion passed unanimously.

6. BUSINESS ITEMS

a. Chair/Vice-Chair Elections

Mr. Parikh moved to Lay on the Table the Chair and Vice-Chair Elections. Motion seconded by Ms. Butte. The motion passed unanimously.

b. Plaza of Champions Nomination

John Lloyd, Deputy Director provided a presentation on the Plaza of Champions history, process, and nomination of Wes Carpenter. The Board discussed the nomination of Wes Carpenter. Mr. Parikh moved to recommend the nomination of Wes Carpenter for Kirkland's Plaza of Champions to City Council. Seconded by Ms. Judd. Motion passed with 4 votes in favor and 1 abstention.

c. Capital Projects Update

Mary Gardocki, Park Planning and Development Manager provided a presentation on Parks and Community Services Capital Improvement Program projects during 2020-2021. Staff answered questions from the Board.

d. Park Board Retreat Planning

John Lloyd, Deputy Director introduced the proposed topics for the Park Board retreat. Staff answered questions from the Board. Staff and the Board proposed January 30, 2021, for the retreat date with a time of 10:00 AM to noon, with a 1-hour break, finishing from 1:00 PM to 3:00 PM.

7. COMMUNICATIONS

a. Correspondence

b. Department Monthly Report

Staff will share the December department report with the Board when it becomes available.

c. Staff Updates and Information

Linda Murphy, Recreation Manager announced her retirement after 23 years working for the City of Kirkland. The Recreation Manager position has been posted.

d. Park Board member reports

Ms. Judd, Ms. Butte, and Ms. Baird-Joshi discussed their involvement in the 132nd Square Park art selection process.

e. Comments from the Chair

Ms. Baird-Joshi discussed the Park Board Neighborhood Meeting assignment process.

ADJOURNMENT

Ms. Butte moved to adjourn the meeting. Mr. Parikh seconded. The motion passed unanimously, and the meeting was adjourned at 8:44 p.m.

Heather Lantz-Brazil, Recording Secretary
Parks and Community Services

Susan Baird-Joshi, Chair
Park Board



CITY OF KIRKLAND
Department of Parks and Community Services
123 Fifth Avenue, Kirkland, WA 98033 425.587.3000
www.kirklandwa.gov

MEMORANDUM

To: Park Board

From: John Lloyd, Deputy Director, Parks and Community Services
Mary Gardocki, Park Planning and Development Manager

Date: February 10, 2021

Subject: Election of Chair and Vice-Chair

RECOMMENDATION

That the Park Board conduct elections to fill the positions of Chair and Vice-Chair for 2021. This item was "laid on the table" at the January meeting. An approved motion to "take from the table" will be needed to resume discussion.

BACKGROUND DISCUSSION

Kirkland Municipal Code 3.36.040 states that the Park Board Chair and Vice-Chair will be elected annually to a one-year term and elections will be held at the Board's final meeting of the year. Due to the COVID-19 pandemic, Park Board only held two meetings in 2020. When the pandemic began, it was not known that the Board would not hold any further meetings in 2020. As such, no elections were conducted in 2020 for 2021 positions.

The Chair is responsible for presiding over Park Board meetings. The Chair may be called on to attend other meetings with City Council, the community, or staff. The Vice-Chair is responsible for performing the duties of the Chair in the event the Chair is not present. Should the Chair be unable to complete their term, the Vice-Chair will assume the Chair position for the remainder of the year. The Chair and Vice-Chair may be asked to represent the Park Board by speaking at events, such as park dedication ceremonies or naming events. The Chair and Vice-Chair meet with Parks and Community Services staff to discuss issues and to assist in setting the agenda for upcoming meetings.

The Chair may be re-elected once to serve a maximum of two years. The current Chair, Susan Baird-Joshi, has completed one year as the Chair. No such term restriction is applied to the position of Vice-Chair.

In the past, staff have sought and received feedback from Park Board members about the skills and abilities needed in the next Chair and Vice-Chair. Common responses include the following:

- Strong organizational skills
- Meeting facilitation skills
- Time management/keeping discussions on topic

- Finding a balance between ensuring everyone has a chance to speak yet ensuring discussions do not drag on unnecessarily
- Ability to interpret and understand the thoughts and feelings of other Board members
- Knowledge of department

Board members should consider the demands of the position in addition to the identified skills and abilities when evaluating nominees during this election procedure. Board members should think about who possesses these skills and abilities, and who would make a good Chair/Vice-Chair.

The Chair will conduct the election process. During the election process, any Board member may nominate any other Board member, including themselves, for the position being elected. Nominations do not need to be seconded by another Board member; however, a nominee may decline the nomination if desired.

Staff recommend the process outlined below for elections.

1. Conduct the election for the Chair position first, followed by the Vice-Chair position.
2. The Chair begins the election procedure by calling for nominations for the open position being considered.
3. Once all nominations have been made, the Chair closes the nomination period and allows each nominee to speak toward their desire for the position.
4. Once each nominee (who has accepted the nomination) has been given the chance to speak, the Chair shall ask the Recording Secretary to call the vote.
5. The election will be conducted via roll call vote, in which the Recording Secretary will call on each Board member to announce their vote. The Recording Secretary will repeat the vote to ensure accuracy.
6. The nominee with the most votes will be declared the winner.
7. In the event of a tie, the voting process will be repeated with the tied nominees until there is no longer a tie. The Chair may choose to provide a second opportunity for the tied nominees to speak toward their desire for the position.

The new Chair/Vice-Chair will assume these positions following the adjournment of the Park Board meeting in which the election is conducted.

**CITY OF KIRKLAND****Department of Parks and Community Services**

123 Fifth Avenue, Kirkland, WA 98033 425.587.3000

www.kirklandwa.gov

MEMORANDUM

To: Park Board

From: John Lloyd, Deputy Director, Parks and Community Services

Date: February 10, 2021

Subject: Pet Waste Bacteria Monitoring, Outreach, and Education

RECOMMENDATION

That the Park Board receive a presentation about the results of the 2019 Pet Waste Bacteria Monitoring, Outreach, and Education campaign.

BACKGROUND DISCUSSION

From September – November 2019 the Storm and Surface Water division of the Public Works Department conducted an 11-week campaign monitoring the impact of pet waste in two parks and the nearby streams and creeks. The goals of the campaign were to evaluate the impacts of pet waste bacteria on water quality, conduct a targeted education and outreach campaign to change scooping behavior, and evaluate whether education and outreach efforts led to measurable changes in bacteria levels in a local creek.

The project received significant attention due to the placement of several hundred brightly colored flags wherever un-scooped pet waste was found. Aaron Hussmann, the Environmental Education and Outreach Specialist who led this campaign will present the findings of the project to the Park Board. The final report can be found in **Attachment A**.



CITY OF KIRKLAND Pet Waste Bacteria Monitoring, Outreach and Education

Funded By



Contents

<u>Background</u>	03
<u>Methods</u>	05
<u>Results</u>	07
<u>Discussion</u>	12
<u>References</u>	13
<u>Appendices</u>	14

*Report Prepared by City of Kirkland Public Works
Storm & Surface Water Division
February 2020*

Acknowledgements

The City of Kirkland Storm & Surface Water Division wishes to thank the King Conservation District, the Kirkland Parks Department, the Kirkland Communications Program team, Kirkland Animal Services, and the King County Environmental Lab for their support of this campaign.



ABSTRACT

Uncollected dog waste on sidewalks, parks, and public places is unsightly, poses a health threat to people, pets, and wildlife, and pollutes local waters. With jurisdictional funding from the King Conservation District, the City of Kirkland ran an 11-week campaign from September through November 2019 to:

- evaluate the impacts of pet waste bacteria on water quality
- conduct a targeted education and outreach campaign to change scooping behavior
- evaluate whether education and outreach efforts led to measurable changes in bacteria levels in a local creek.

Using brightly colored survey flags and signage, City staff marked all locations of un-scooped dog waste in two City parks over the course of three weeks. This visible display paired with targeted outreach efforts and regional media coverage led to an 80% reduction in un-scooped dog waste lasting at least two months after outreach efforts had ceased. No relationship was found between education and outreach efforts and fecal indicator bacteria collected from stream samples (fecal coliform and *E. coli*). However, fecal coliform and *E. coli* results were both strongly associated with measurable precipitation. In addition, detectable quantities of the canine genetic marker were only observed on sample days with measurable precipitation. These results support the notion that rain washes bacteria from dog waste into local waters and helps provide a data-driven basis for lasting and effective changes in scooping behavior.

Background

The Problem with Dog Waste

Kirkland's Juanita Creek watershed drains a 3,623-acre area¹ and contains approximately 15,209 households. There are 2,663 licensed dogs within the Juanita Creek watershed, but the actual number of dogs may be closer to 9,300 based on per-household dog ownership estimates². Research suggests that between 17% and 40% of dog owners do not pick up after their dogs on every walk^{3,4,5}. In the Juanita Creek watershed, this results in an estimated 1,186 to 2,790 pounds of uncollected dog waste daily in the Juanita Creek watershed.

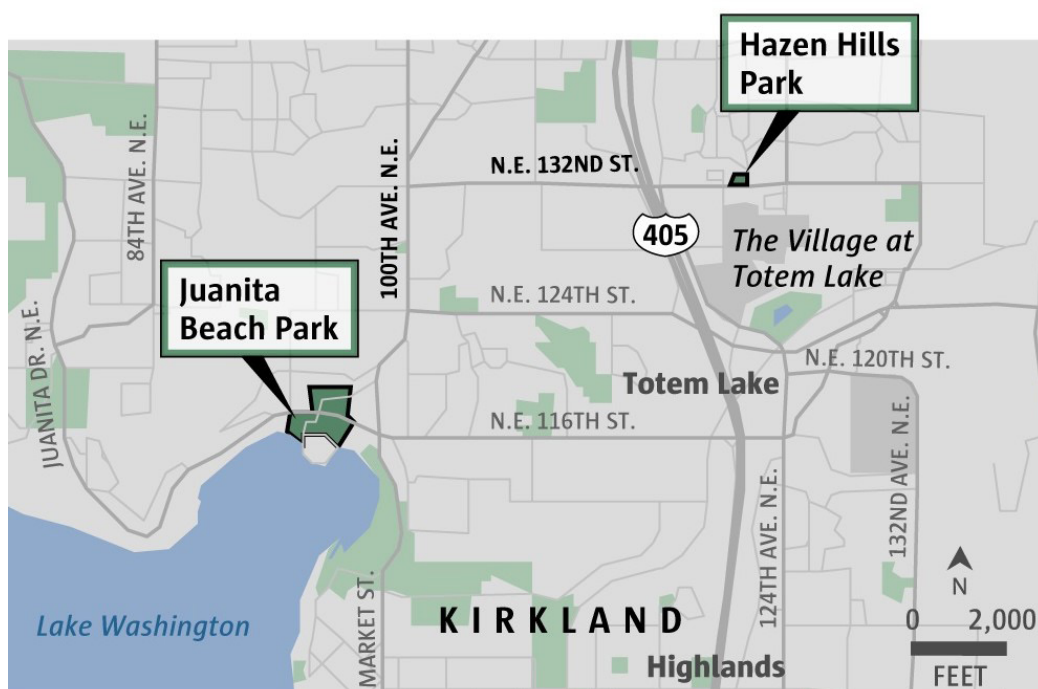
Dog waste contains harmful organisms like *E.coli*, *Giardia*, and worms, that can be transmitted to people and pets if not cleaned up^{6,7}. The average dog waste deposit contains 50 million Colony Forming Units (CFUs) of bacteria per gram⁸ which may survive in dog waste for weeks⁹.

Dog waste also contains elevated levels of nitrogen and phosphorus¹⁰. These nutrients act like fertilizer in our waterways and feed the growth of aquatic plants, including algae. As these plants decay, they use up oxygen in the water that fish and other aquatic life need to survive¹¹.

The Campaign

To address these concerns with un-scooped dog waste, the City of Kirkland applied for and was awarded funding through the King Conservation District Member Jurisdiction Grant program. The focus of this project was to conduct a public outreach campaign paired with an investigation of the impacts of dog waste on water quality.

Two parks in the Juanita Creek watershed were chosen as the primary focus of this campaign: Hazen Hills Park and Juanita Beach Park (north and south of Juanita Drive). Hazen Hills Park experiences heavy use by neighborhood dog owners, and a reach of Juanita Creek bisects the park with unrestricted access to the water by dogs and humans. Juanita Beach Park is one of Kirkland's most heavily used parks. The park experiences seasonal beach closures due to high bacteria levels and the north side of the park is used frequently as an unofficial off-leash dog area.



Source: Esri

JAMES ABUNDIS / THE SEATTLE TIMES

Background

Campaign Goals

The goals of the campaign were to evaluate the impacts of pet waste bacteria on water quality, conduct a targeted education and outreach campaign to change scooping behavior, and evaluate whether education and outreach efforts led to measurable changes in bacteria levels in a local creek. Few studies have explored the relationship between education efforts and physical environmental conditions, but there is evidence that educational campaigns can be effective means of reducing bacterial inputs to water sources¹².

This project was divided into four objectives:

Objective 1



Bacteria Sampling and Microbial Source Tracing (MST)

Environmental water samples from the section of Juanita Creek that runs through Hazen Hills Park were collected and analyzed for fecal coliform, *E. coli*, and the EPA canine qPCR genetic markers. Samples were collected pre- and post-outreach to determine whether a measurable difference in bacteria levels could be observed as a result of education and outreach efforts. EPA canine qPCR genetic marker samples were analyzed to determine the presence or absence of fecal bacteria from dogs in stream samples.



Objective 2



Un-scooped Dog Waste Frequency Monitoring

The frequency of uncollected dog waste was counted and mapped on a weekly basis before, during, and after outreach efforts to determine whether education and outreach efforts led to a reduction in uncollected dog waste.

Objective 3



Pet Waste Removal Infrastructure

Improved signage, new pet waste stations, and pet waste bags were installed in the study areas to facilitate proper disposal and removal of dog waste by park visitors.

Objective 4



Education and Outreach

A targeted education and outreach campaign was conducted over a three-week period. Outreach efforts included marking all documented un-scooped dog waste occurrences with brightly colored flags and accompanying signage, direct mail newsletters, direct mail postcards, community outreach booths, social media engagement, and press/media engagement.

Methods

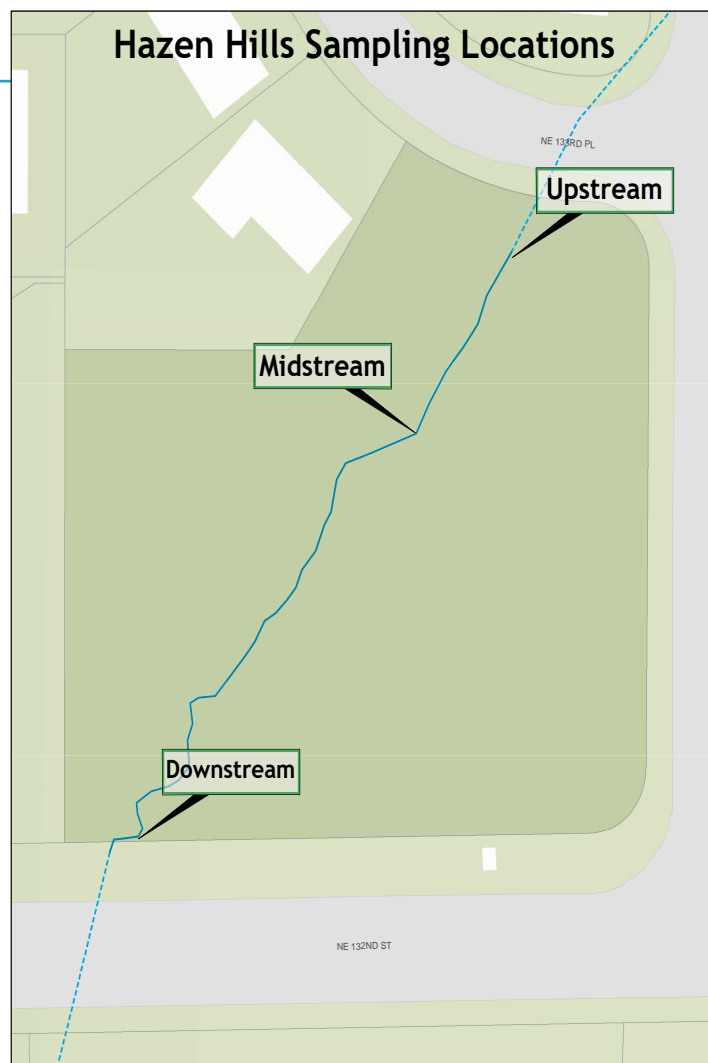


Objective 1

Bacteria Sampling and Microbial Source Tracing (MST)

Water samples for fecal coliform and *E. coli* were collected in Hazen Hills Park from three locations, three times per week, for three weeks prior to outreach and three weeks after outreach. Sampling locations included an upstream location where the creek enters the park, a midstream location where another inlet from adjacent roof drains enters the stream, and a downstream location where the stream exits the park. Samples were promptly delivered to and analyzed by AmTest in Kirkland, WA.

Water samples for the EPA canine qPCR genetic marker were collected from the downstream location once per week for three weeks prior to outreach and three weeks following outreach. Samples were stored on ice and delivered to the King County Environmental Lab within 24 hours of collection for analysis.



Objective 2

Un-scooped Dog Waste Frequency Monitoring

Frequency monitoring of un-scooped dog waste was conducted at each park location once per week, on the first day of each week. Monitoring began five weeks prior to education and outreach, continued through the campaign period, and concluded three weeks after the campaign. Total duration of frequency monitoring was 11 weeks. Frequency monitoring is also planned for one-month, three-month, and six-month follow up periods.

Each park was canvassed using a grid search and each instance of un-scooped dog waste was counted and mapped. Dog waste was not picked up or disposed of in order to avoid influencing bacteria results or scooping behavior (for example, visitors are less likely to litter when less litter is present in an area¹³).

In Hazen Hills Park, the entire park area was monitored. Due to the large size of Juanita Beach Park, a 0.85-acre area on the north side of the park (Juanita North) and a 1.02-acre area along the waterfront (Juanita South) were selected for monitoring. All other areas of Juanita Beach Park were excluded from monitoring (Appendix A).

Methods

Objective 3



Pet Waste Removal Infrastructure

A total of six new pet waste bag dispensers and ten new signs were installed across the study areas. One station and three signs were installed at Hazen Hills Park, two stations and three signs were installed at Juanita

North, and three stations and four signs were installed in the waterfront portion of Juanita South. A total of 52,000 dog waste bags were ordered to ensure long-term stocking of the stations. Dog bag dispensers were co-located with existing trashcans already in service by the Parks Department to minimize impact on staff resources.



Objective 4



Education and Outreach

Flagging

The central component of the education and outreach phase consisted of placing bright yellow survey flags at each mapped location of un-scooped dog waste along with signage in each park explaining the presence of the flags. This method of dog waste flagging has been conducted in many jurisdictions across the country including in Aspen (CO)¹⁴, Bellingham (WA)¹⁵, and Springfield (MO)¹⁶. The primary purpose of this flagging is to raise awareness about the cumulative impact of un-scooped dog waste. Flags were left in place for three weeks to allow for maximum visibility in the community. Frequency monitoring continued throughout the flagging period and new flags were added when necessary.

Direct Mail and Email

Educational direct mail postcards were sent to all residents who lived within one-quarter mile of each park. A new dog-focused newsletter titled “The Scoop” was sent to all licensed dog owners in Kirkland in partnership with the City’s Animal Services Program (Appendix B). Information about the campaign was also sent through the City’s weekly email newsletter as well as the Kirkland Conserves monthly email newsletter.

Social Media and Press

Social media posts were published through the City of Kirkland Facebook and Twitter accounts throughout the outreach period. Press releases were sent to regional media outlets detailing the flagging efforts and highlighting proper scooping behavior.

Booth Outreach

An education booth with the “poop toss” bean bag game for youth was conducted at City of Kirkland’s *City Hall for All* event during the outreach phase.

Super Scooper Pledge

Research shows that those who sign a pledge to perform a specific behavior are more likely to perform that behavior compared to those who do not sign a pledge¹⁷. All direct mail, social media, booth outreach, and press releases directed audiences to an online Super Scooper pledge where participants pledged to always pick up after their pets. Those who completed the pledge were mailed a free on-leash dog bag dispenser and roll of refill bags.

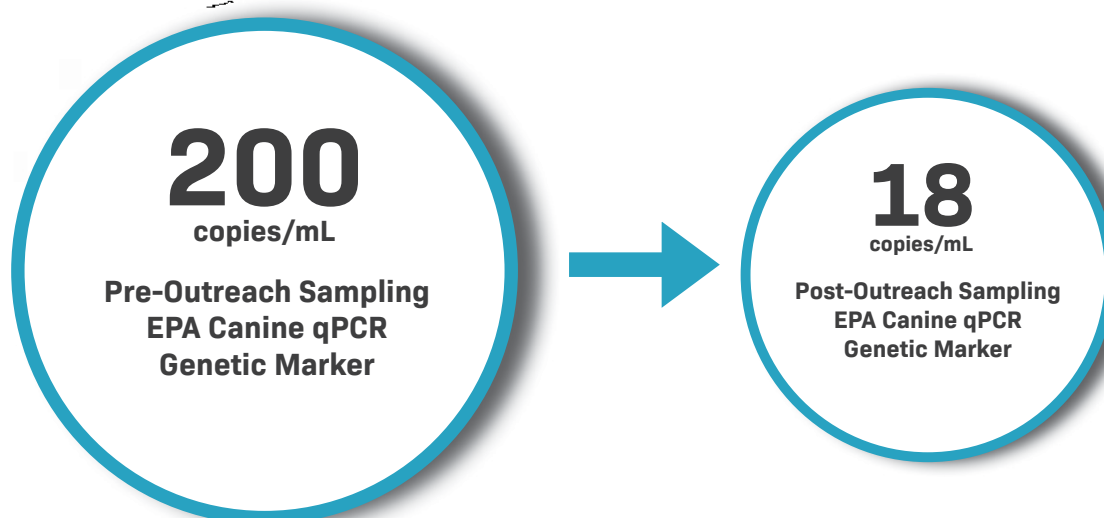
Results



Bacteria Sampling and Microbial Source Tracing (MST)

Microbial Source Tracing

Detectable quantities of the EPA canine qPCR marker, Dog-1-Bacteroidales, were reported in one of three pre-outreach samples (200 gene copies per mL of water) and one of three post-outreach samples (18 copies/mL). While copies/mL don't necessarily equal a colony forming unit of bacteria, the pre-outreach result of 200 copies/mL was noted as a substantial presence by King County Environmental Lab staff. All other samples were below the minimum detectable level. Notably, the only samples that yielded detectable results were on sample days with measurable precipitation. Samples that were below the minimum detectable level were collected on days with no measurable precipitation.



Bacteria Monitoring

Geometric means were calculated for pre- and post-outreach fecal coliform and *E. coli* results at upstream, midstream, and downstream sampling locations. Results are reported below in Colony Forming Units (CFU) per 100mL of water. For reference, King County closes the Juanita Beach swim area when geometric means exceed 200 CFU/100mL. While the geometric mean of CFU/mL did decrease between the pre- and post-outreach conditions, this decrease was not statistically significant* and could be due to decreased precipitation during the post-outreach condition. Overall, no statistically significant differences were observed between sampling location or between the pre- and post-outreach condition on either fecal coliform or *E. coli* indicators. However, both fecal coliform and *E. coli* were positively significantly correlated with measured precipitation ($p < .01$).

Fecal coliform Geometric Mean (CFU/100ml)	Hazen Hills Upstream	Hazen Hills Midstream	Hazen Hills Downstream
Pre-Outreach	68.2	58.3	64.9
Post-Outreach	17.1	14.3	21.3
<i>E. coli</i> Geometric Mean (CFU/100ml)	Hazen Hills Upstream	Hazen Hills Midstream	Hazen Hills Downstream
Pre-Outreach	42.3	33.4	23.0
Post-Outreach	11.2	10.4	17.0

*Statistical significance is the probability that the observed result would have occurred due to sampling error alone. A p-value lower than 0.05 indicates statistical significance.

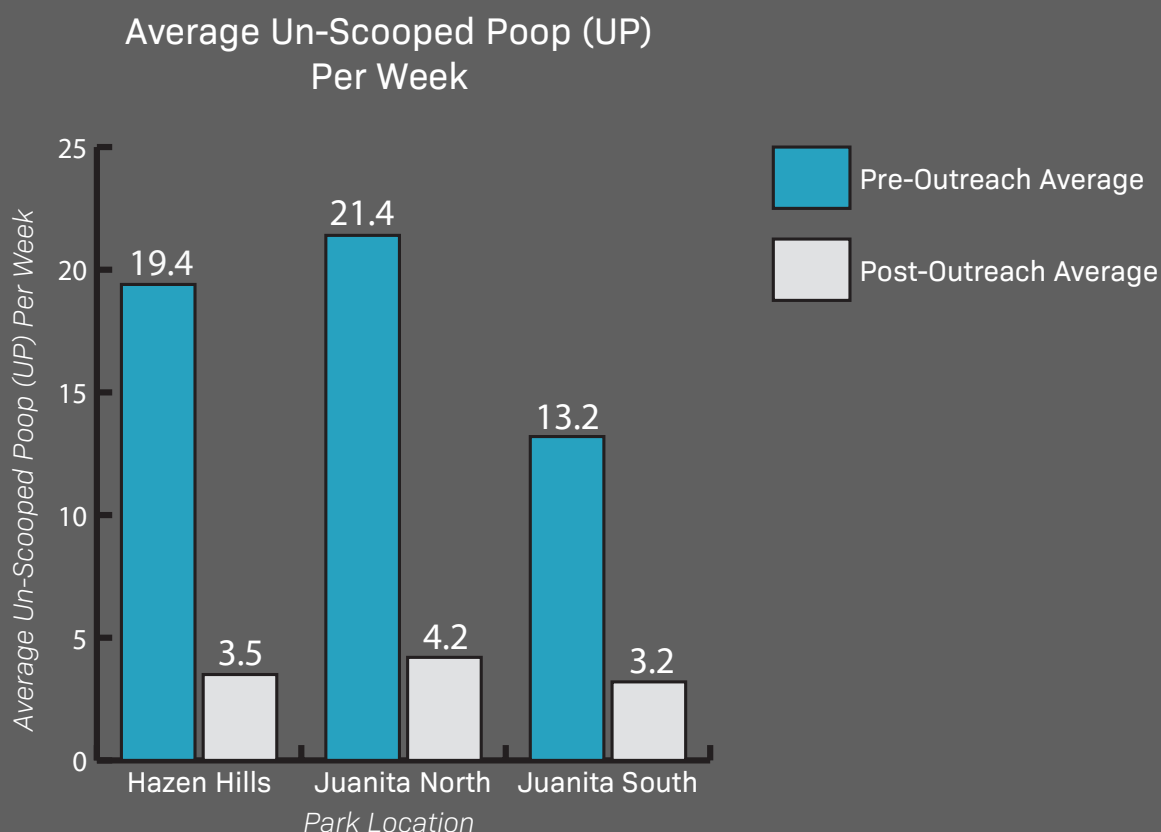
Results



Un-scooped Dog Waste Frequency Monitoring

Pre-outreach frequency of uncollected dog waste averaged 18 un-scooped poops (UP) per week across the three study areas. A total of 97 UP were observed at Hazen Hills Park, 107 UP at Juanita North, and 66 UP at Juanita South during the five-week pre-outreach monitoring period (Appendix C). UP declined significantly during the outreach phase (4.1 UP per week) and post-outreach monitoring (3.2 UP per week). All three study areas demonstrated statistically significant ($p < 0.01$) decreases in UP following the three-week outreach period. Overall, average un-scooped poop per week decreased by 80% as a result of education and outreach efforts.

Average un-scooped dog poop
decreased by 80%
as a result of education and outreach efforts.



Results

Objective 3



Pet Waste Removal Infrastructure

The newly installed pet waste stations have been heavily utilized since installation, particularly at Juanita Beach Park. As of February 2020, approximately 12,000 dog waste bags have been used across the six new stations. This equates to approximately 4,500 pounds of dog waste being removed from the park.

12,000 Bags

=

**4,500
Pounds of
dog waste.**

Objective 4



Education and Outreach

Flagging

More than 300 yellow flags were deployed across the three study areas with almost instant reaction and discussion around the community as noted in the social media and press section below.

Direct Mail and Email

Direct mail postcards were sent to 3,215 households within one-quarter mile of each park area. In addition, 4,369 copies of the inaugural copy of the pet-focused newsletter, "The Scoop," were sent to licensed dog owners across Kirkland. Emails were sent to City distribution lists including *This Week in Kirkland* and *Kirkland Conserves*, reaching approximately 5,700 inboxes.



Results

Social Media and Press

Social media and press were incredibly effective components of this campaign due to the high visibility of the marking flags. Notably, the outreach efforts were printed on the front page of the Seattle Times, with an estimated circulation of 230,000. In addition, outreach efforts were covered on regional media outlets including *King5*, *KOMO*, *KIRO*, *KNKX*, *New Day Northwest*, *The Kirkland Reporter*, *Kirkland Patch*, *Kirkland Weblog*, and *High Country News*.

Social media posts gained significant traction, with City of Kirkland posts reaching more than 22,000 people with 613 likes, 214 comments, 75 shares, and 13,646 video views. In addition, social media posts by news media outlets garnered an additional 664 likes, 488 comments, and 108 shares. Social media may have reached tens of thousands more people through shared posts, but these metrics are not available.

The overall estimated reach between news media and social media outlets for this campaign was more than 340,000 people.



13,284

Direct mail pieces and emails delivered.



305,000+

Circulation reached through news media.



35,000+

Social media interactions and reach.

Booth Outreach

Several hundred Kirkland residents attended the annual City Hall for All and Sustainability Fair on October 12, 2019. Approximately 150 people engaged with the dog waste booth and 60 people signed the Super Scooper pledge to receive a free on-leash dog bag dispenser.



Results

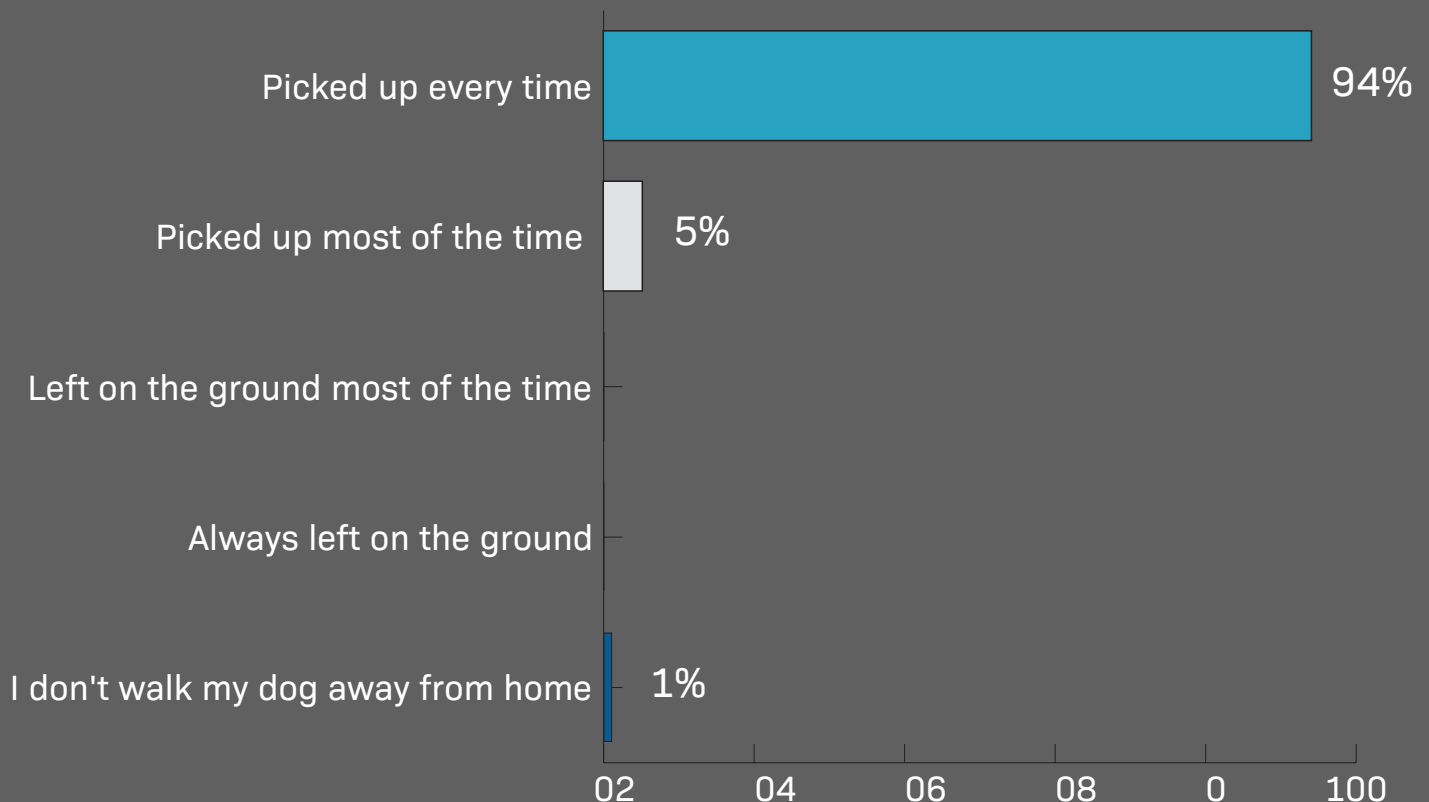
Super Scooper Pledge

The online Super Scooper pledge was an overwhelming success due to the widespread reach of social media and news media coverage. 425 people signed the online pledge in a one-month period. A total of 350 on-leash dog bag dispensers and 240 refill rolls were distributed to pledge participants who requested these items. This response used the entirety of the program supplies and resulted in an additional 11,800 dog waste bags being distributed to the Kirkland community. These bags equal an additional 4,425 pounds of dog waste being scooped, bagged, and thrown away.

In a follow up survey with Super Scooper pledge participants, 94% of respondents reported picking up their dog's waste every time while on walks, and 75% of respondents reported scooping at least a few times per week from dog waste deposited at home or in their yard. In addition, 97% of respondents either somewhat agreed or strongly agreed that bacteria in pet waste can be a health risk and that bacteria in pet waste can pollute our waters.

94% of participants
pick up their dog's waste on every walk.

How often do you pick up your dog's waste while on walks/away from home?



Discussion

Targeted education and outreach efforts resulted in an 80% decrease in un-scooped dog waste across three study parks, demonstrating a clear link between campaign efforts and scooping behavior. This substantial reduction in un-scooped dog waste has held constant for at least two months after the conclusion of all outreach efforts.

No statistically significant links between the education and outreach campaign and fecal indicator bacteria were observed during the study period. However, fecal coliform and *E. coli* were both strongly associated with measurable precipitation. In addition, detectable quantities of the canine genetic marker were only observed on sample days with measurable precipitation. These results support the idea that rain washes bacteria from dog waste into local waters and helps provide a data-driven basis for future education and outreach efforts. More data is needed to fully explore the relationship between education efforts and fecal indicator bacteria.

These results support the idea that rain washes bacteria from dog waste into local waters.

Lessons Learned

Due to the overwhelmingly positive response to the online Super Scooper pledge, more resources and staff time were necessary to deliver pledge items than originally anticipated. Original plans called for hand delivering pledge items as pledge responses trickled in online, but this option was not feasible due to the high volume of responses. Instead, pledge items were mailed to participants, resulting in a substantial postage cost.

While the brightly colored flags were highly visible and sparked positive behavior change, not all residents or dog owners were pleased with their presence. Some concerns were raised by residents that dogs and/or small children would hurt themselves on the flags. On two occasions all flags were removed from the park by anonymous residents and had to be replaced by City staff.

A variety of factors make it difficult to make statistically significant links between fecal indicator bacteria and education efforts, including precipitation, upstream events, distance of waste from the water source, etc. Future explorations of this type should include a control location with no education and outreach efforts. In addition, the sampling schedule may benefit from a focus on sampling days with only measurable precipitation, as dry days provide no mechanism for bacteria transport. The managers of future studies may also wish to expand the timescale over which bacteria data is collected. Previous studies that have demonstrated links between fecal indicator bacteria and outreach efforts have relied on data spanning several years rather than several weeks.



Discussion

Future Direction

The high visibility of the marking flags likely helped dog owners be more attentive to their dog when spending time at the study parks. While positive scooping behavior has held constant for several months, it is reasonable to expect un-scooped dog waste numbers to increase in the spring and summer months. Future iterations of these outreach efforts may solely focus on the monitoring and flagging strategy when new concerns regarding un-scooped waste arise at any of Kirkland's parks. Monitoring and flagging are a relatively low-effort, low-cost response that delivers a high degree of behavior change. Future plans may also include training volunteers to conduct frequency monitoring and flagging to further reduce City staff time and resources.

References

1. City of Kirkland. 2014. Surface Water Master Plan.
2. American Veterinary Medical Association. 2017-18. U.S. Pet Ownership & Demographics Sourcebook.
3. Elway Research. 2019. Stormwater Runoff Awareness, Attitudes & Behavior Survey of Residents. Prepared for the Cities of Bellevue, Bothell, Duvall, Kenmore, Newcastle, & Woodinville.
4. Blenderman, A., Taff, B. D., Schwartz, F., & Lawhon, B. 2018. Dog Guardians' Perceptions and Behaviors Related to the Disposal of Pet Waste in City of Boulder Open Space and Mountain Parks. Final Report prepared for City of Boulder, Colorado, Open Space and Mountain Parks by Pennsylvania State University and the Leave No Trace Center for Outdoor Ethics.
5. Center for Watershed Protection. Pollution Prevention Fact Sheet: Animal Waste Collection. Accessed February 2020.
6. Cinquepalmi, V., Monno, R., Fumarola, L., Ventrella, G., Calia, C., Greco, M., ... Soleo, L. 2012. Environmental Contamination by Dog's Faeces: A Public Health Problem? *International Journal of Environmental Research and Public Health*, 10(1), 72–84. doi: 10.3390/ijerph10010072
7. Centers for Disease Control and Prevention. October 2019. Healthy Pets, Healthy People.
8. Walker, M. & Garfield, L. 2018. Dog Wastes and Water Quality: Evaluating the Connection at Lake Tahoe. Produced for the University of Nevada Cooperative Extension.
9. Anderson, K.L., Whitlock, J.E., & Harwood, V.J. 2005. Persistence and Differential Survival of Fecal Indicator Bacteria in Subtropical Waters and Sediments. *Applied and Environmental Microbiology*, 71(6), 3041-3048. doi: 10.1128/AEM.71.6.3041-3048.2005
10. Hobbie, S. E., Finlay, J. C., Janke, B. D., Nidzgorski, D. A., Millet, D. B., & Baker, L. A. 2017. Contrasting Nitrogen and Phosphorus Budgets in Urban Watersheds and Implications for Managing Urban Water Pollution. *Proceedings of the National Academy of Sciences*, 114(16), 4177–4182. doi: 10.1073/pnas.1618536114
11. Virginia Cooperative Extension. 2009. Control Methods for Aquatic Plants in Ponds and Lakes. Accessed February 2020.
12. Ervin, J. S., Werfhorst, L. C. V. D., Murray, J. L. S., & Holden, P. A. 2014. Microbial Source Tracking in a Coastal California Watershed Reveals Canines as Controllable Sources of Fecal Contamination. *Environmental Science & Technology*, 48(16), 9043–9052. doi: 10.1021/es502173s
13. Reiter, S. M., & Samuel, W. 1980. Littering as a Function of Prior Litter and The Presence or Absence of Prohibitive Signs. *Journal of Applied Social Psychology*, 10(1), 45–55. doi: 10.1111/j.1559-1816.1980.tb00692.x
14. Washington Post. 2015. Aspen's Sumgler Mountain is Full of Dog Poop and it Stinks.
15. Bellingham Herald. 2019. The Poop Fairies Are Gone - It's Time to Bring a Bag and Clean Up After Your Own Dog.
16. AP News. 2019. 'Is This Your Turd?': Missouri City's Cleanup Flags Dog Poop.
17. Lokhorst, A. M., Dijk, J. V., Staats, H., Dijk, E. V., & Snoo, G. D. (2009). Using Tailored Information and Public Commitment to Improve the Environmental Quality of Farm Lands: An Example from the Netherlands. *Human Ecology*, 38(1), 113–122. doi: 10.1007/s10745-009-9282-x

Appendices

Appendix A - Map of Frequency Monitoring Areas. Yellow areas indicate where monitoring occurred.



Juanita North Map



Juanita South Map



Appendices

Appendix B - Outreach Materials

Direct Mail Postcard Sent to Nearby Residents

Be #1 at picking up #2.

Our local creeks need your help to prevent water pollution from un-scooped dog poop.

Sign the **Super Scooper Pledge** online at www.kirklandwa.gov/petwaste and receive a free poop scooping toolkit for your dog!



Good human.



Visit www.kirklandwa.gov/petwaste to learn more.

Front

Back

Bring extra bags. Scoop every poop. Carry it to the trash can.

20,000 dogs in Kirkland



6,000 pounds of poop every day






Dog poop **spreads disease** to people and pets, and **pollutes our creeks and lakes.**

Healthy families. Clean water. Clean shoes.

“The Scoop” Newsletter Sent to Licensed Dog Owners



City of Kirkland
123 Fifth Avenue
Kirkland, WA 98033-6189

PSRST STD
U.S. Postage
PAID
Kirkland, WA
Permit #268

More than **20,000** dogs of all shapes and sizes live and play in Kirkland. We need you and your dog's help in keeping the trails, parks, and beaches our dogs love clean, safe, and healthy.



"Kirkland's Doggy Newsletter"

Be #1 at picking up #2!!

Sign the **Super Scooper** pledge and receive a **free poop scooping toolkit** that includes a poop bag dispenser, flashlight, and/or collar light for your pet. Sign the pledge at www.kirklandwa.gov/petwaste.

This program is funded by the  **King Conservation District**



Questions/Comments:

Kellie Stickney
Communications Program Manager
425-587-9021 kstickney@kirklandwa.gov

Aaron Hussmann
Education & Outreach Specialist
425-587-3857 ahussmann@kirklandwa.gov



Kirkland Park Ranger Betty Fletcher with Officer Matison

Join us in welcoming Kirkland's first ever **Park Ranger, Betty Fletcher**. Betty came to Kirkland with a wealth of experience in animal control and a background in law enforcement. As a Park Ranger Betty is focused on the safety of our City parks and marina. She also supports Animal Control Officer Jennifer Matison when she needs backup on animal control calls.

Some of the duties of a Kirkland Park Ranger include:

- patrolling all City parks and the marina
- responding to animal violations
- enforcing leash laws
- ticketing pet owners that fail to clean up their pet's waste
- enforcing the City's pet licensing requirements

However, for Park Ranger Betty Fletcher the job is more than just enforcement, it's also about education and building relationships with the community.



Is Your Pet License Up-To-Date?

Renew today at <http://bit.ly/KirklandPetLicense>!

Pet licenses help ensure the safe return of your furry four-legged family members should they ever get lost!

LOVE 'EM, LICENSE 'EM.







The Poop Problem

Kirkland dogs poop an average of 6,000 pounds every day! Dog poop contains harmful bacteria and germs that can spread disease to other dogs and wildlife, and pollutes our streams, creeks, and lakes.

Dog poop harbors organisms like E. coli, giardia, parvovirus, worms, and other harmful pathogens that can spread to pets, children, and adults if not cleaned up.

When it rains, dog poop washes away to the nearest storm drain, stream, creek, or lake. The bacteria in dog poop can harm water quality and can make our favorite places to swim and play unsafe.

Bring extra bags. Scoop every poop. Carry it to the trash can.



The Poop Solution

The easiest and most effective way to prevent the spread of disease and water pollution is to scoop the poop, bag it, and put it in the trash.

At home, dog poop should be scooped every day, but weekly scooping and scooping before it rains can also make a big difference. Some bacteria can survive in your yard for weeks or months, and can be tracked indoors by paws, shoes, or flies.

On walks, bring extra bags, scoop every time, and carry it to the trash. Watch your dog closely when off-leash and be sure to scoop poop even when it is in tall brush or plants.

Dog poop, even in biodegradable bags, should not be thrown in compost or yard waste because the bacteria cannot be safely broken down by composting.

The Scoop - Kirkland's Doggy Newsletter

Appendices

Signage Installed at Parks

Bring extra bags.
Scoop every poop.
Carry it to the trash can.



Healthy families. Clean water. Clean shoes.

IT'S THE LAW.

FINES UP TO \$250.

Dog walkers are required to have poop scooping equipment with them and to remove dog poop from public properties.

KMC 8.09.508

WHY?

Dog poop is raw sewage that can spread disease to people, pets, and wildlife, and pollutes our waters.

Dog poop looks bad and smells bad too.

Funding made possible by



www.kirklandwa.gov/animalservices

Seattle Times Coverage



SHOWERS LIKELY
High: 56, Low: 52, > 83%
seattletimes.com/weather

\$1.50

The Seattle Times

WINNER OF 10 PULITZER PRIZES

INDEPENDENT AND LOCALLY OWNED FOR MORE THAN 123 YEARS

SEATTLETIMES.COM

6,000 pounds a day: Kirkland campaign targets dog poop



After city of Kirkland officials targeted Juanita Beach Park as having a poop problem, city staff put up yellow flags at each spot they found unscooped dog poop. The northeast curve of the park has a large concentration of flags.

By PAIGE CORNWELL
Seattle Times staff reporter
KIRKLAND — A French bulldog trots along Kirkland's Juanita Beach Park, followed by his walker who is chatting on her cellphone. The plump dog stops, snorts and gets in position. Snout up, hips back, bear down. Poop.

The dog walker, distracted by her conversation, pulls on the leash, seemingly unaware that the dog just did his business on the grass. The pair exit, leaving another casualty in Kirkland's War on Dog Poop.

The bulldog's feces, along with other unscooped piles, will eventually be cataloged by Kirkland city officials, who have been working since September to monitor how much dog poop



An aerial photo shows the locations of unscooped dog poop in the park last week. The beach area has the fewest flags.

is left at two of the city's parks. Beach Park and Uluau Hills Park, which the poop monitors

— they volunteered for this task — need to mark every pile of dog waste. Over a three-week period, they documented more than 250 “findings” in the two parks. “The flags show that it’s not just your dog doing this,” said Aaron Husman, Kirkland’s environmental education and outreach specialist. “And it shows that someone is watching.”

The flags, along with the accompanying yellow signs explaining their purpose, are part of Kirkland’s campaign to encourage more residents to scoop their dogs’ poop. It’s a widespread problem, as the flags show, and city officials warn that the poop can spread disease to people and other animals.

See > **POOP WAR**, A4

Boeing denies prior knowledge of MAX problems

PILOT TEXTS | Company says comments were about malfunctioning flight simulator, not flight control system.

By DOMINIC GATIS
Seattle Times aerospace reporter
Two days after the publication of a 2016 instant-enclosure chat between two senior pilots on the 737 MAX program drew outraged condemnation from members of Congress, airline pilot unions and outside experts, Boeing said Sunday the pilot text exchange had been widely misinterpreted.

In the chat conversation on Nov. 15, 2016, made public Friday by a congressional committee, 737 MAX chief technical pilot Mark Forkester told another pilot that when he’d flown the MAX in a flight simulator that day, the jet’s new flight control system behaved very erratically.

In a Sunday morning statement, Boeing insisted this doesn’t mean it had prior knowledge of the system flaws that two years later would play a major role in the two deadly crashes in Indonesia and Ethiopia. Instead, Boeing said, Forkester’s “comments reflected a reaction to a simulator program that was not functioning properly.”

Boeing said the erratic behavior in 2016 of the new flight control system in the simulator — Forkester in the chat with another pilot described the flight control system as “not functioning properly.”

See > **BOEING**, A4

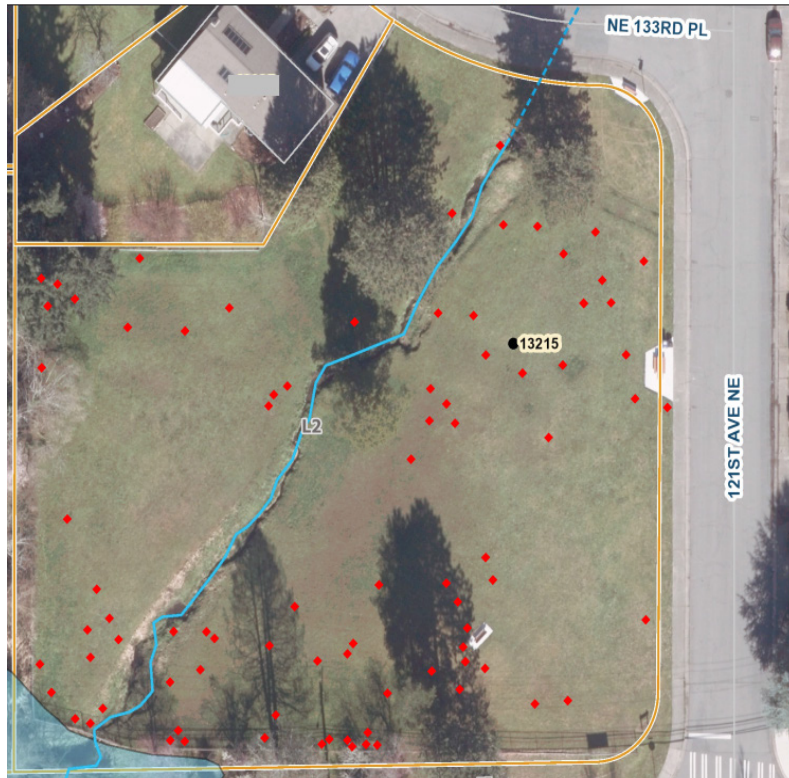
Pelosi leads delegation to Jordan to talk of Syria crisis

By STEVE HENDRICK
The Washington Post

Appendices

Appendix C - Frequency Monitoring Maps

**Hazen Hills Un-Scooped Poop
Pre-Outreach**

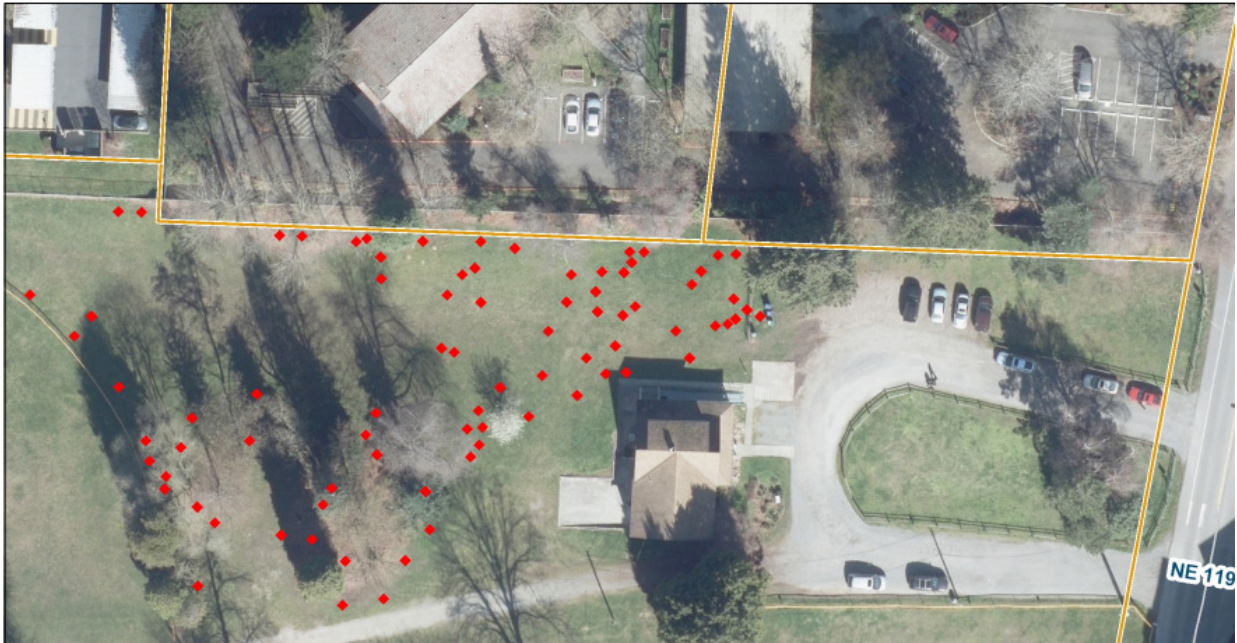


**Hazen Hills Un-Scooped Poop
Post-Outreach**



Appendices

**Juanita North Un-Scooped Poop
Pre-Outreach**



**Juanita North Un-Scooped Poop
Post-Outreach**



Appendices

**Juanita South Un-Scooped Poop
Pre-Outreach**



**Juanita South Un-Scooped Poop
Post-Outreach**





CITY OF KIRKLAND
Department of Parks and Community Services
123 Fifth Avenue, Kirkland, WA 98033 425.587.3000
www.kirklandwa.gov

MEMORANDUM

To: Park Board

From: John Lloyd, Deputy Director, Parks and Community Services

Date: February 10, 2021

Subject: Recommendation to City Council for Art at Juanita Beach Park

RECOMMENDATION

For the Park Board to make a recommendation to City Council regarding the 1% for Art at Juanita Beach Park.

BACKGROUND DISCUSSION

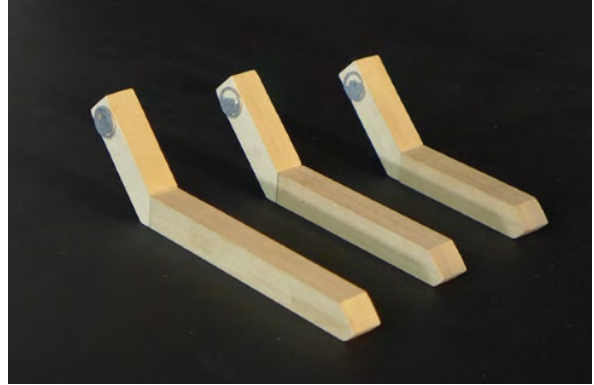
The City of Kirkland has a 1% for Art policy in which 1% of eligible Capital Improvement Projects are dedicated to public art. The policy states that when art is in a park the City Council must receive a recommendation from both the Cultural Arts Commission and Park Board.

A public art committee that consists of both Cultural Arts Commission and Park Board members was formed to start discussions regarding the public art to be included in the Juanita Beach Park project.

The 1% for Art budget for the project is \$30,000 and the committee selected UrbanRock Design as the artist. The committee selected the art concept below to be recommended to City Council for Juanita Beach Park. The Cultural Arts Commission made a recommendation to City Council to accept the concept in their January 21, 2021 meeting. CIP Project Manager Anneke Davis and Cultural Arts Commission Chair Dana Nunnally will present the art concept to Park Board seeking a formal recommendation to City Council.

ART CONCEPT

This proposal seeks to present a lyrical portrayal of Juanita Beach's past and current landscape. Three Limbs is a two-part project: seating elements represent the area's timber-rich landscape, and metal discs translate historic photos of the site's past. The seating element will be installed near the playground. Additional metal discs will be installed on the railing of the boardwalk. Concept images are shown below.



Hauling Shingles on
Cross Plank Road
1900



Shingle Sawyers
1915



Logging Crew



Bath House 1935



Swimming Dock



Juanita Beach Cabins



Kayak Rentals



NEXT STEPS

The recommendations of the Cultural Arts Commission and Park Board will be presented to City Council at the March 2, 2021, City Council meeting. After Council approval, fabrication and installation of the artwork can proceed.



CITY OF KIRKLAND
Department of Parks and Community Services
 123 Fifth Avenue, Kirkland, WA 98033 425.587.3000
www.kirklandwa.gov

MEMORANDUM

To: Park Board

From: Lynn Zwaagstra, Director, Parks and Community Services
 John Lloyd, Deputy Director, Parks and Community Services
 Mary Gardocki, Park Planning and Development Manager

Date: February 10, 2021

Subject: Parks, Recreation, and Open Space (PROS) Plan Update Process Overview

RECOMMENDATION

That the Park Board receive a presentation outlining the steps involved in updated the City's Parks, Recreation, and Open Space Plan.

BACKGROUND DISCUSSION

This year we will be updating our Parks, Recreation, and Open Space (PROS) Plan. The PROS Plan will guide our community's efforts in the provision of parks and recreation services and facilities in the future. This process is estimated to take approximately 12-18 months to complete. The following illustrates the major work tasks, key deliverables and anticipated timelines:

Major Tasks & Deliverables

Timeline

Request for Proposals & Contract

February – April 2021

Information Gathering

April - July 2021

1 Project Initiation Meeting
Community Profile; Demographic & Trend Forecast
Park and Facility Site Tour
Site Assessments & Inventory (SvR)
Draft Mapping Products

April
April - May
May
May - June
May – July

Community Engagement Process

May - October 2021

Community Meetings (SvR)
Park Board Work Sessions
Stakeholder Sessions
Community Survey
Public Information Collateral

May, July, October
May, July
May - June
May - July
On-going

Recreational Needs Assessment

Service Standards Assessment & Benchmarking Analysis
Needs Assessment Summary Report

June - September 2021

June - July
August – September

Preliminary Plan Development

Draft Parks & Recreation Plan
6-Year Capital Improvements Plan

September - December 2021

September - November
September – October

Final Plan Development & Approval

2 Sessions with Park Board
2 Sessions with the City Council
Final PROS Plan & RCO Self-Certification Materials

October 2021 - February 2022

October - January
January - February
February

Two additional components will run concurrently with the PROS Plan; an ADA Assessment and Transition Plan and the Synthetic Turf Strategic Plan. Both plans will help inform the goals and the capital projects portions of the PROS Plan.



CITY OF KIRKLAND
Department of Parks & Community Services
123 Fifth Avenue, Kirkland, WA 98033 425.587.3300
www.kirklandwa.gov

MEMORANDUM

To: Park Board
From: John Lloyd, Deputy Director, Parks and Community Services
Date: February 4, 2021
Subject: Park Board Liaison Assignments

RECOMMENDATION

That the Park Board discuss neighborhood liaison assignments and make representative appointments. Additionally, it is recommended that the Park Board update the community about various ongoing programs and projects associated with the Parks and Community Services Department.

BACKGROUND DISCUSSION

The Park Board mission statement is as follows:

"The mission of the Park Board shall be to provide policy advice and assistance to the Department of Parks and Community Services (PCS) and City Council in order to ensure the effective provision of Parks and Community Services programs and facilities to the residents of the City of Kirkland."

The job description of the Park Board discusses involving the community and meeting with volunteer groups and neighborhoods to determine needs and interests. Some years ago, the Park Board decided to assign each board member to be the liaison with one or more neighborhood organizations. These assignments are typically made just after new Park Board members are appointed by City Council.

Park Board members have requested assistance in meeting liaison role expectations. After discussion, it was determined that the following two strategies would be used to prepare Park Board members for neighborhood meetings.

- Park Board members should use the monthly report provided by staff and pick out key items to convey to the neighborhoods. This could be followed by questions and feedback.
- Staff will highlight a topic or a discussion question for use with neighborhoods that would solicit community input for consideration. Discussion questions could be related to upcoming Park Board agenda items or be generic in nature.

LIAISON ASSIGNMENTS

Current Neighborhood Liaison Assignments are listed below. The Board may assign representation in any manner desired. This may include opening all assignments and selecting new representation or only assigning unassigned neighborhoods. Many neighborhood associations are holding meetings virtually. Please visit the City's [neighborhood association website](#) for up to date information about each neighborhood.

Neighborhood	Park Board Member	Frequency
Central Houghton	Unassigned	Second Tuesday of odd months (No summer or Dec meetings)
Everest	Mike Holland	Fourth Tuesday odd months (No summer meetings)
Evergreen Hill	Unassigned	Third Wednesday of every month (No meetings in Nov, Dec, July, Aug)
Finn Hill	Amanda Judd	Meets as needed
Highlands	Unassigned	Third Wednesday odd months (Nov–May)
Juanita	Unassigned	Second Monday of odd months (No summer meetings)
Lakeview	Unassigned	Inactive - No meetings at this time
Market	Uzma Butte	Third Wednesday odd months (No summer meetings)
Moss Bay	Amanda Judd	Second Monday odd months (No summer meetings)
Norkirk	Unassigned	First Wednesday even months (No summer meetings)
North Rose Hill	Uzma Butte	Third Monday of every month (No July or Dec meetings)
South Rose Hill/Bridle Trails	Susan Baird-Joshi	Second Tuesday odd months (No summer meetings)
Totem Lake	Unassigned	Inactive - No meetings at this time