

CITY OF KIRKLAND

123 FIFTH AVENUE • KIRKLAND, WASHINGTON 98033-6189 • (425) 587-3800

DEPARTMENT OF PUBLIC WORKS

PRE-APPROVED PLANS POLICY

Policy D-14: SPECIAL STORMWATER REQUIREMENT

This policy is required for the parcels located within Figure 1. Projects located within Figure 1 are subject to the following requirements:

1. All projects are required to meet the 2021 King County Surface Water Design Manual and the City of Kirkland Addendum (Policy D-10)
2. In addition, projects must fully infiltrate the 100-year storm event for areas that currently do not have a direct connection to the City's stormwater system.
 - a. If infiltration is not feasible on site, a detention system is required. The 2, 10 and 100-year developed peak flow must match the existing 2, 10 and 100-year peak flow for the area currently connected to the City's stormwater system.
3. If the project triggers flow control, the flow control facility must meet Level 2 flow control AND the 100-year developed peak flow must match the existing 100-year peak flow for the area currently connected to the City's stormwater system.

Below is an example:

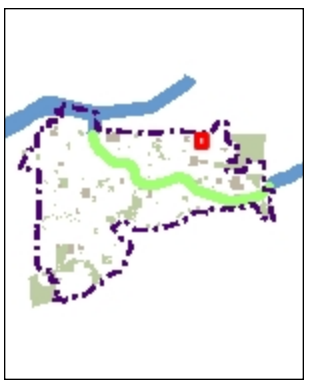
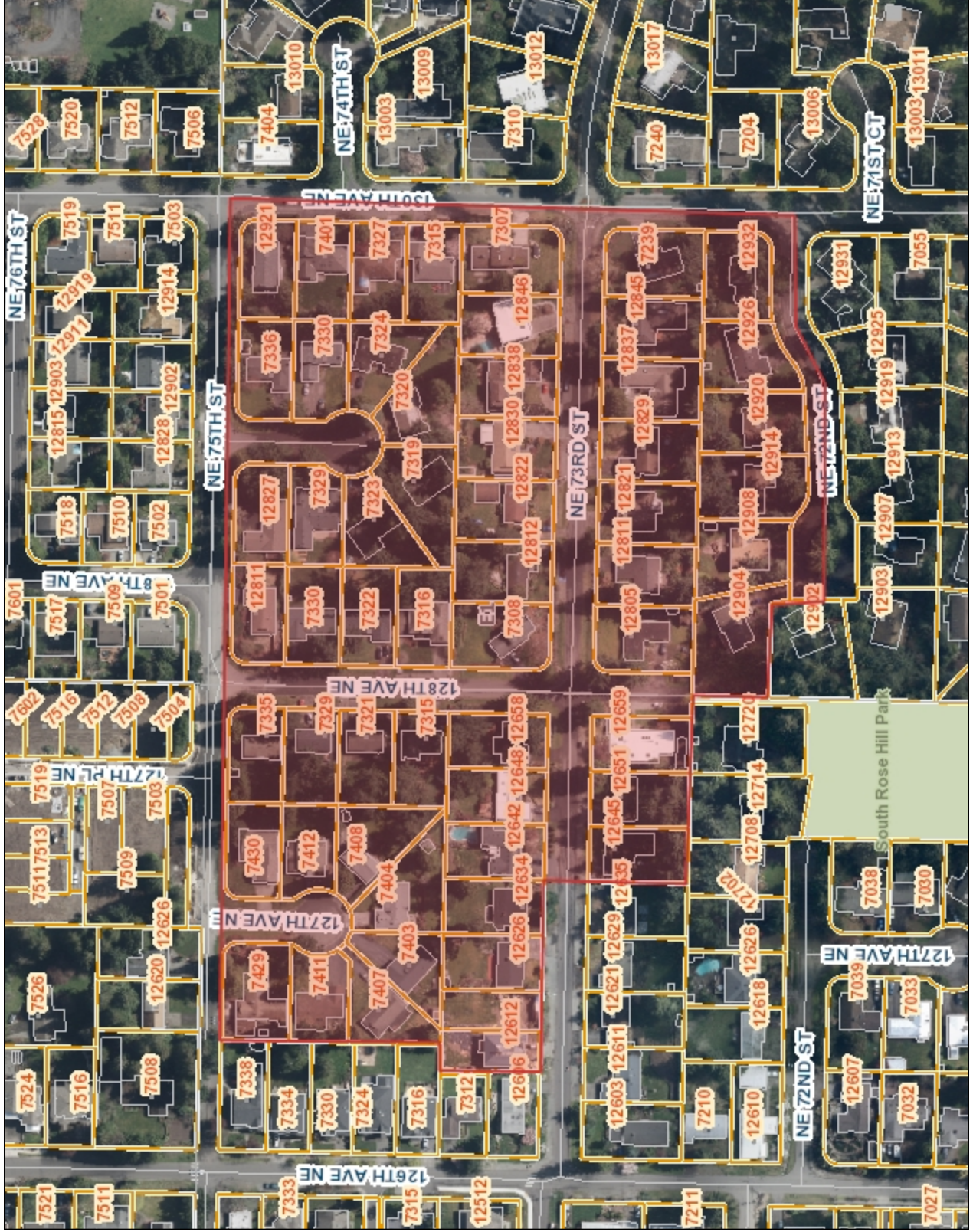
Project Description

An existing house is looking to add an addition to the house. In existing conditions, 1,000 sf of impervious area is currently connected to the City's stormwater system, and 1,000 sf of impervious area disperses on the site. The project proposed tear down and rebuild 3,000 sf of impervious surface on the lot.

Drainage Requirements

In addition to meeting the 2021 KCSWDM and COK Addendum, this project must fully infiltrate 2,000 sf of impervious area. Only 1,000 sf was in existing conditions was connected to the City's stormwater system. If infiltration is not feasible, a detention system must be designed. The detention system release rate shall match the 2, 10, and 100 year peak flow for 1,000 sf of impervious area.

Figure 1 - Parcels Needing Special Stormwater Requirement



- Legend**
- Address
 - Other Address
 - Current Address
 - Current ADU
 - Pending Address
 - City Limits
 - Grid
 - QQ Grid
 - Cross Kirkland Corridor
 - Regional Rail Corridor
 - Streets
 - Parcels
 - Buildings
 - Lakes
 - Parks
 - Schools
 - Olympic Pipeline Corridor

1:2,400

Notes

Produced by the City of Kirkland. © 2017 City of Kirkland, all rights reserved.
 No warranties of any sort, including but not limited to accuracy, fitness, or merchantability, accompany this product.

