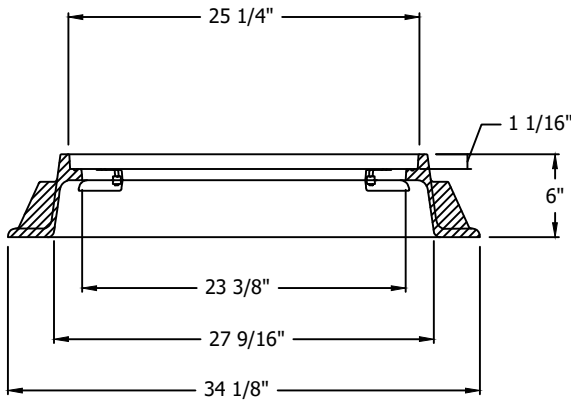
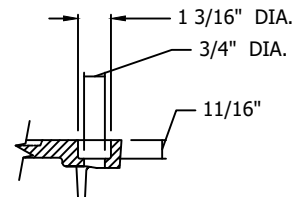


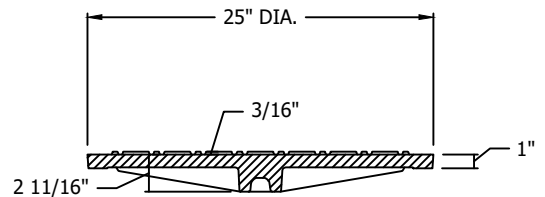
PLAN VIEW



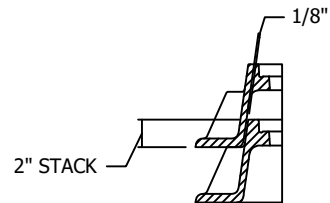
FRAME SECTION



BOLTHOLE DETAIL



COVER SECTION



STACKING DETAIL

NOTES:

1. VERIFY SLOTTED FRAMES ARE THOROUGHLY FILLED IN WITH MORTAR FOR EFFICIENT INTERACTION WITH IRON AND STRUCTURE.
2. REQUIRED ON ALL ARTERIALS, COLLECTORS OR ANY TIME THAT THE IRON WILL BE WITHIN THE TRAVEL LANE.
3. LID SHALL BE MARKED "WASTEWATER".
4. CITY OF KIRKLAND LOGO REQUIRED.
5. LID MUST BE COVERED WITH TAR PAPER BEFORE OVERLAY.
6. USE WITH THREE LOCKING BOLTS 5/8"-11 BOLT SOCKET (ALLEN HEAD), 2" LONG DRILL HOLES SPACED 120° APART ON 23-1/16" DIA. B.C.
7. COVER MATERIAL IS DUCTILE IRON ASTM A48 CL35B, WITH A MINIMUM WEIGHT OF 141 LBS.
8. FRAME MATERIAL IS DUCTILE IRON ASTM A48 CL35B, WITH A MINIMUM WEIGHT OF 134 LBS.
9. DRILL AND TAP THREE 5/8"-11 NC HOLES THROUGH RING AT 120° AND 23-1/16" DIA. B.C.
10. PRODUCT SUPPLIED BY EJ, OR APPROVED EQUAL.
11. FRAME AND COVER SHALL BE H-20 LOADING RATED IF INSTALLED IN ROADWAY.

CITY OF KIRKLAND	
PLAN NO. CK - S.16	
	24" MANHOLE FRAME W/LOCKING COVER AND LOGO