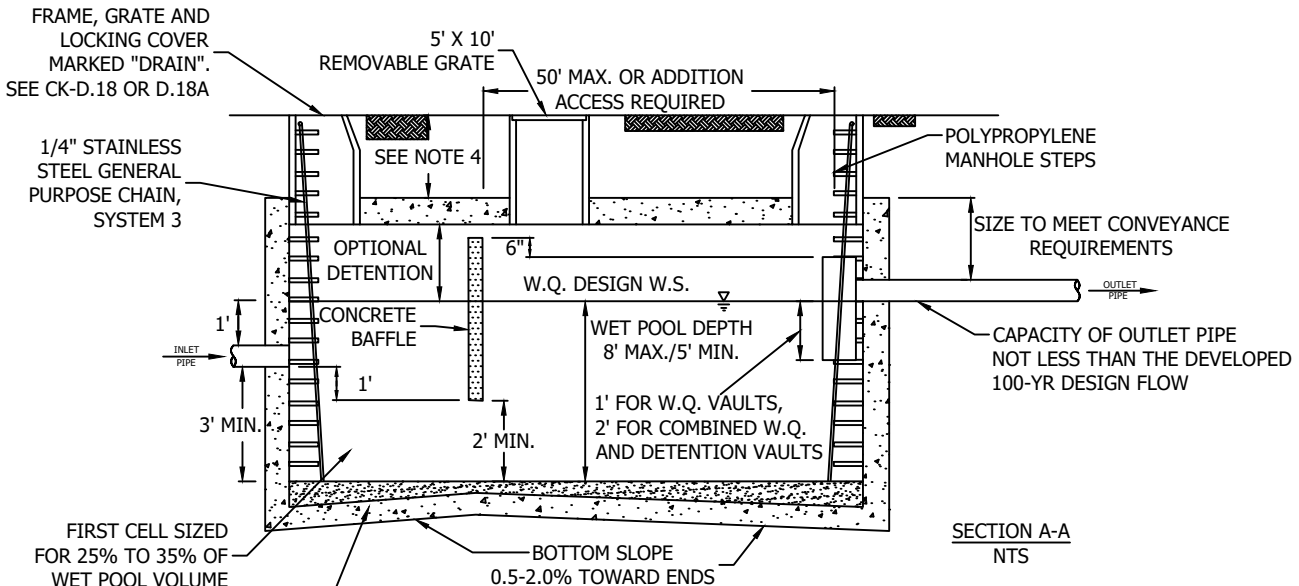


PLAN VIEW
NTS



SECTION A-A
NTS

FRAME, GRATE AND LOCKING COVER MARKED "DRAIN". SEE CK-D.18 OR D.18A

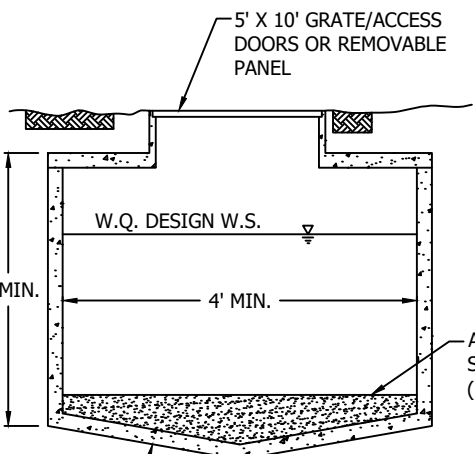
1/4" STAINLESS STEEL GENERAL PURPOSE CHAIN, SYSTEM 3

FIRST CELL SIZED FOR 25% TO 35% OF WET POOL VOLUME

AVERAGE SEDIMENT STORAGE 1' MIN. (FIRST CELL)

NOTE:

1. HARDWARE AND METAL PARTS SHALL BE ALUMINUM OR STAINLESS.
2. PROVIDE WATER STOP AT ALL CAST-IN-PLACE CONSTRUCTION JOINTS.
3. PREFABRICATED VAULT SECTIONS MAY REQUIRE STRUCTURAL MODIFICATIONS TO SUPPORT 5' X 10' OPENING OVER MAIN VAULT. ALTERNATELY, ACCESS CAN BE PROVIDED VIA A SIDE VESTIBULE AS SHOWN.
4. REFER TO CK-D.35 AND D.35A FOR ACCESS SIZING.
5. DISTANCE BETWEEN ACCESS MANHOLES AND ANY POINT WITHIN THE STRUCTURE SHALL BE NO GREATER THAN 50' MAX.
6. A MINIMUM OF 50 SQUARE FEET OF GRATE SHALL BE PROVIDED OVER THE SECOND CELL. FOR VAULTS IN WHICH THE SURFACE AREA OF THE SECOND CELL IS GREATER THAN 1,250 SQUARE FEET, 4% OF THE TOTAL SURFACE AREA SHALL BE GRATED. THIS REQUIREMENT MAY BE MET BY ONE GRATE OR BY MANY SMALLER GRATES DISTRIBUTED OVER THE SECOND CELL AREA. IF THE VAULT IS A SINGLE CELL, VENTILATION SHALL BE PROVIDED OVER THE SECOND HALF OF THE VAULT.
7. REMOVABLE BAFFLE IS NOT ALLOWED IN PUBLICLY MAINTAINED VAULTS.
8. IF THE VAULT IS LESS THAN 2,000CF (INSIDE DIMENSIONS) OR IF THE LENGTH-TO-WIDTH RATIO OF THE VAULT POOL IS 5:1 OR GREATER, THE BAFFLE OR WALL MAY BE OMITTED AND THE VAULT MAY BE ONE-CELLED.



SECTION B-B
NTS

CITY OF KIRKLAND

PLAN NO. CK - D.36



WET VAULT