



EvergreenHealth / Totem Lake Traffic Study

Transportation Commission

May 22, 2019



8250 - 165th Avenue NE
Suite 100
Redmond, WA 98052-6628
T 425-883-4134
F 425-867-0898
www.tsinw.com

Joint effort between the City of Kirkland and EvergreenHealth:

- To understand the traffic situation from the viewpoint of both the City of Kirkland and EvergreenHealth.
- To understand the implications of current and future growth for staff, providers, patients and families of EvergreenHealth.
- To provide planning-level recommendations for the future motorized and non-motorized transportation network serving the Totem Lake subarea, with a focus around the EvergreenHealth campus.
- To support the service expectations of stakeholders and the organization.
- To support the shared-goals and responsibilities of the City of Kirkland and EvergreenHealth and assist stakeholders with planning together for future conditions.
- To inform independent initiatives within the scope of the two organizations and independent of the ongoing partnership.

The study was prepared by a team consisting of:

EvergreenHealth



- Shelly Henderson, Director of Brand Strategy, Communications & Marketing Assets - Marketing, Communications & PR
- Ty M. Heim, Executive Director of Design, Construction and Facilities Services
- Tom Youtsey, Real Estate Services Account Manager, CBRE
- Kay Taylor, Senior Vice President - Marketing, Communications & Customer Engagement

City of Kirkland

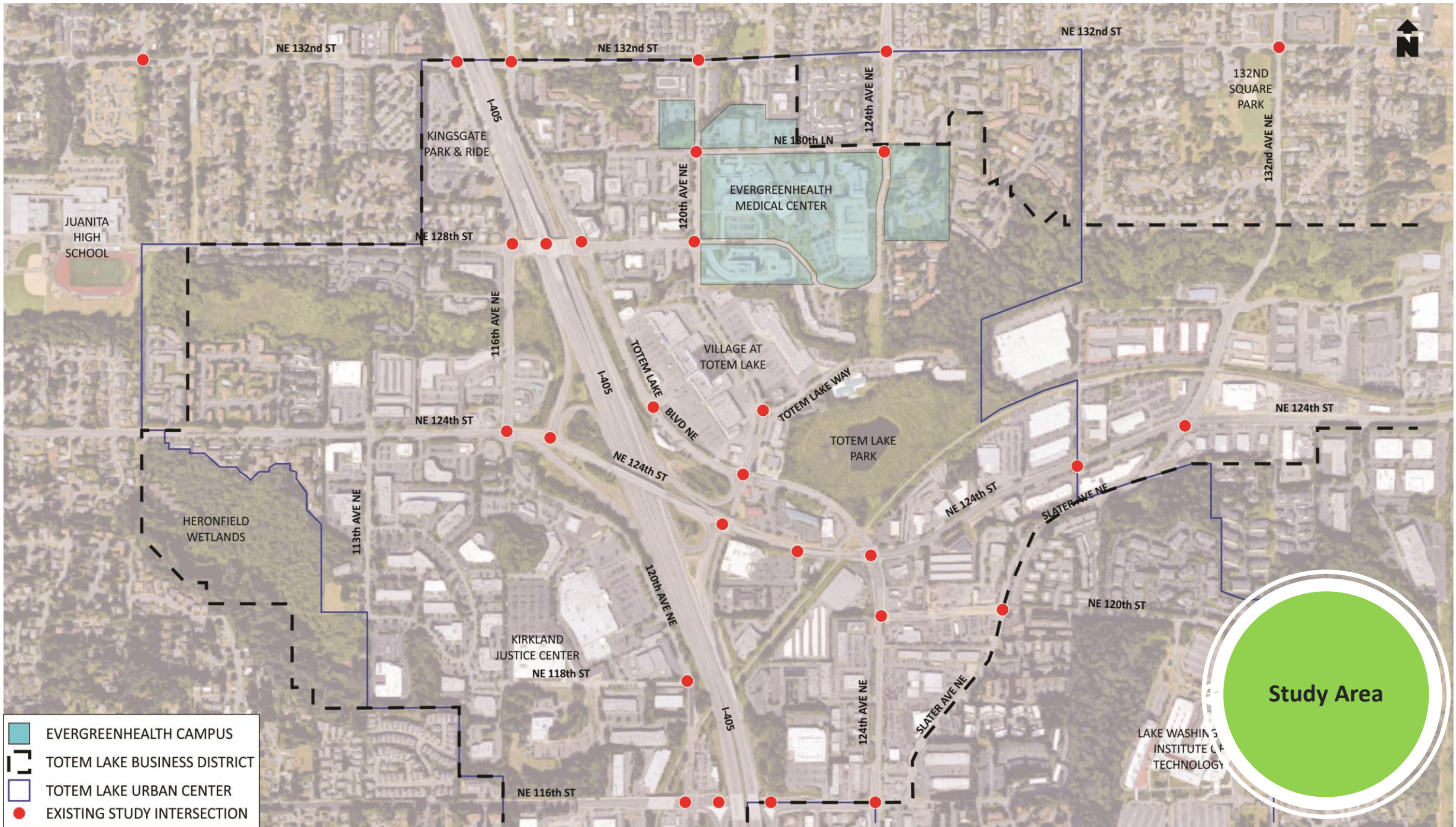


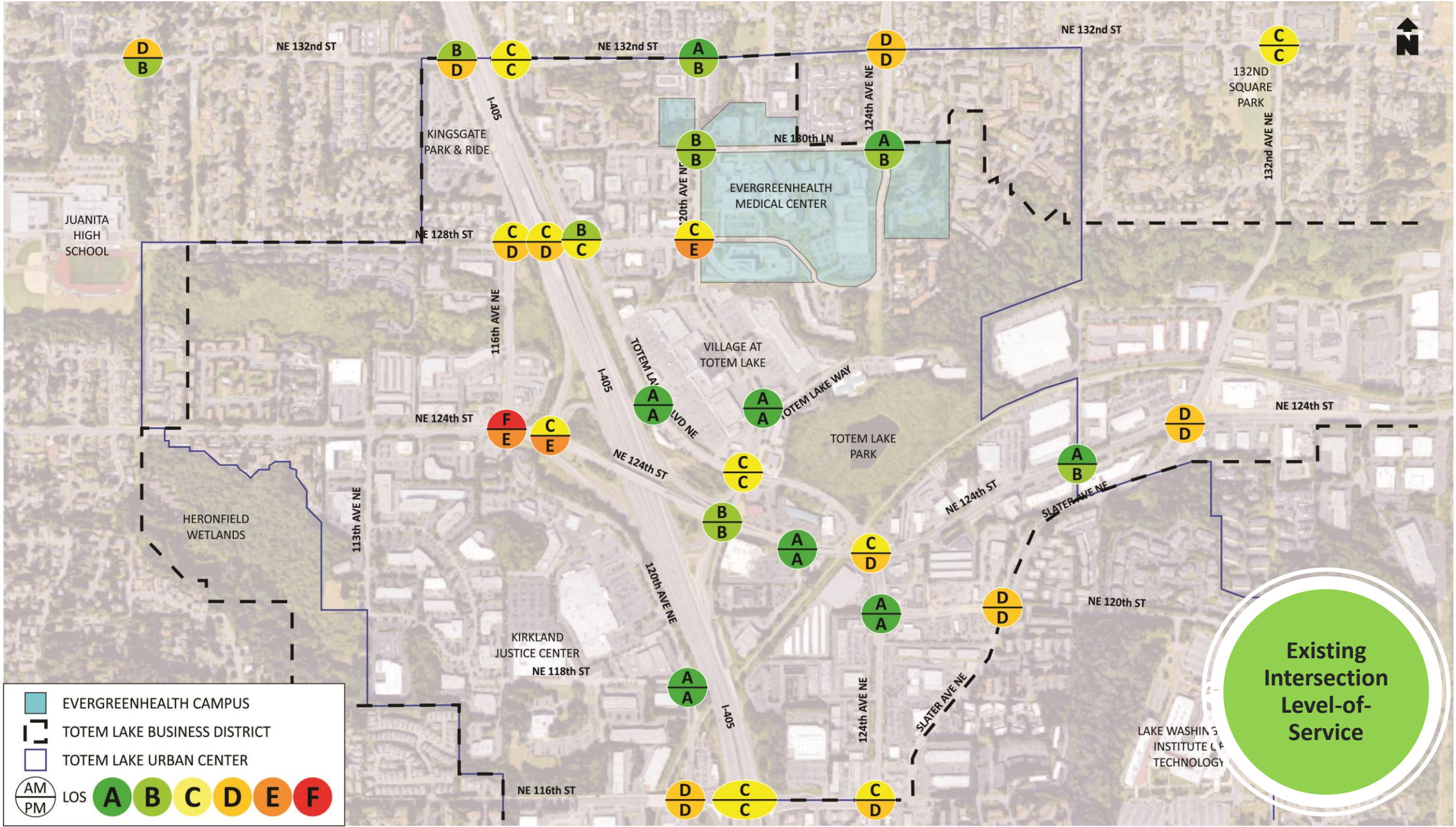
- Kathy Brown, Public Works Director – Public Works Department
- Joel Pfundt, Transportation Manager – Public Works Department
- Thang Nguyen, Transportation Engineer – Public Works Department
- June Carlson, Transportation Strategic Advisor – Public Works Department
- Scott Guter, Associated Planner – Planning and Building Department

Transportation Solutions, Inc.

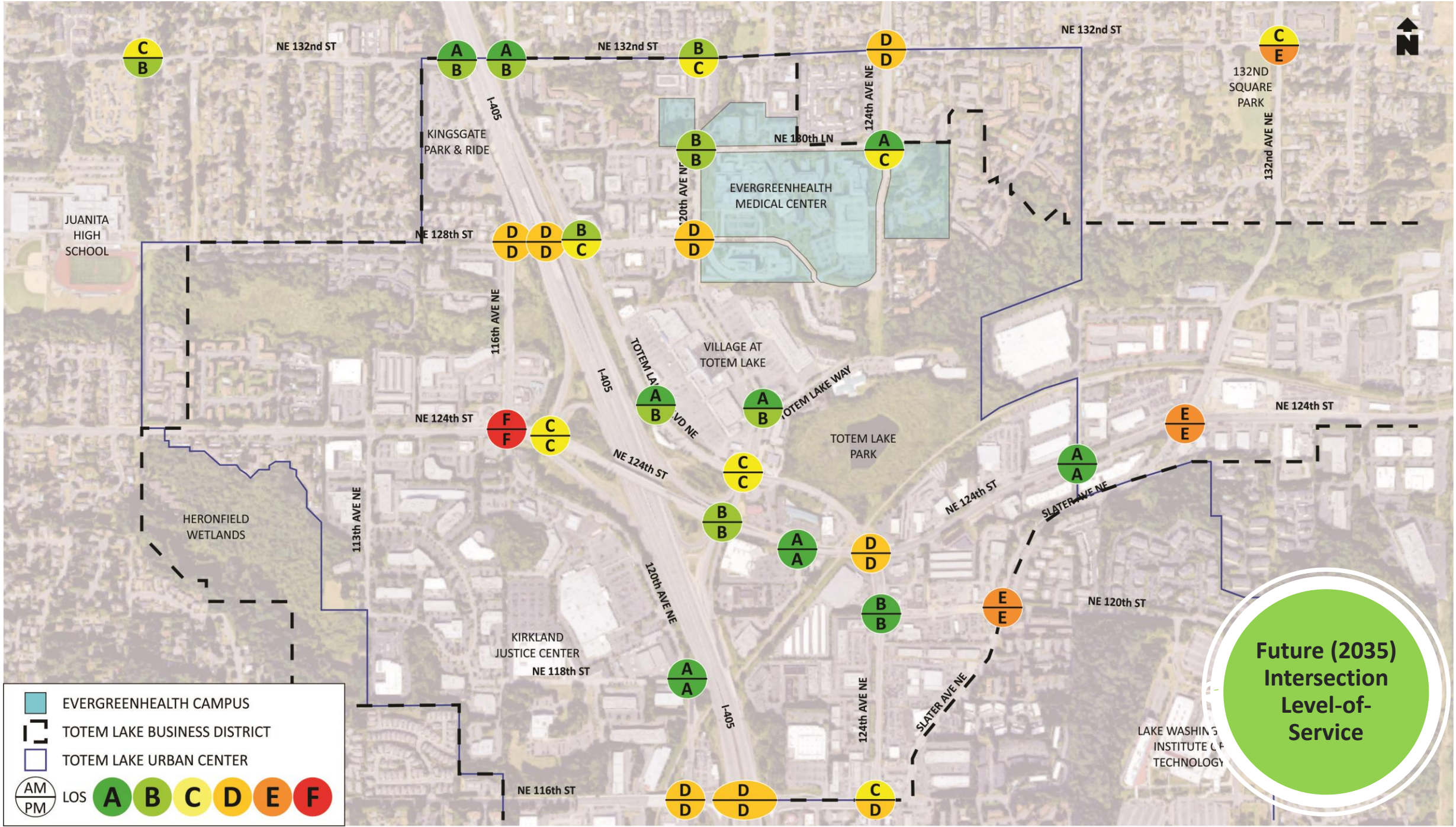
- Victor Salemann, P.E., Principal
- Andrew Bratlien, P.E., Sr. Transportation Engineer
- Jeff Hee, P.E., Sr. Transportation Engineer







Existing
Intersection
Level-of-
Service



Key Study Findings:

- Growth in the Totem Lake Subarea is occurring at a higher rate than anticipated in the City of Kirkland's Comprehensive Plan.
- The future I-405 - NE 132nd Street Interchange (opening in 2023) will help to support the growth in the Totem Lake subarea but is not enough in it itself.
- As a result of development growth, transportation improvements identified in the City of Kirkland's Comprehensive Plan will be needed sooner than originally anticipated.

Key Study Findings:

- The recent decision by the Kirkland City Council to accelerate project development with debt financing will ensure that transportation improvements keep pace with and support planned growth in the Totem Lake subarea including EvergreenHealth.
- This study confirms the need for all the projects identified in City of Kirkland's Comprehensive Plan and identified one major new project (revising the westbound approach on NE 128th Street to allow left turns onto Totem Lake Blvd) that both the City of Kirkland, EvergreenHealth and other subarea stakeholders should support.
- This study also supports a continued partnership to advance current and future initiatives, and funding appeals.

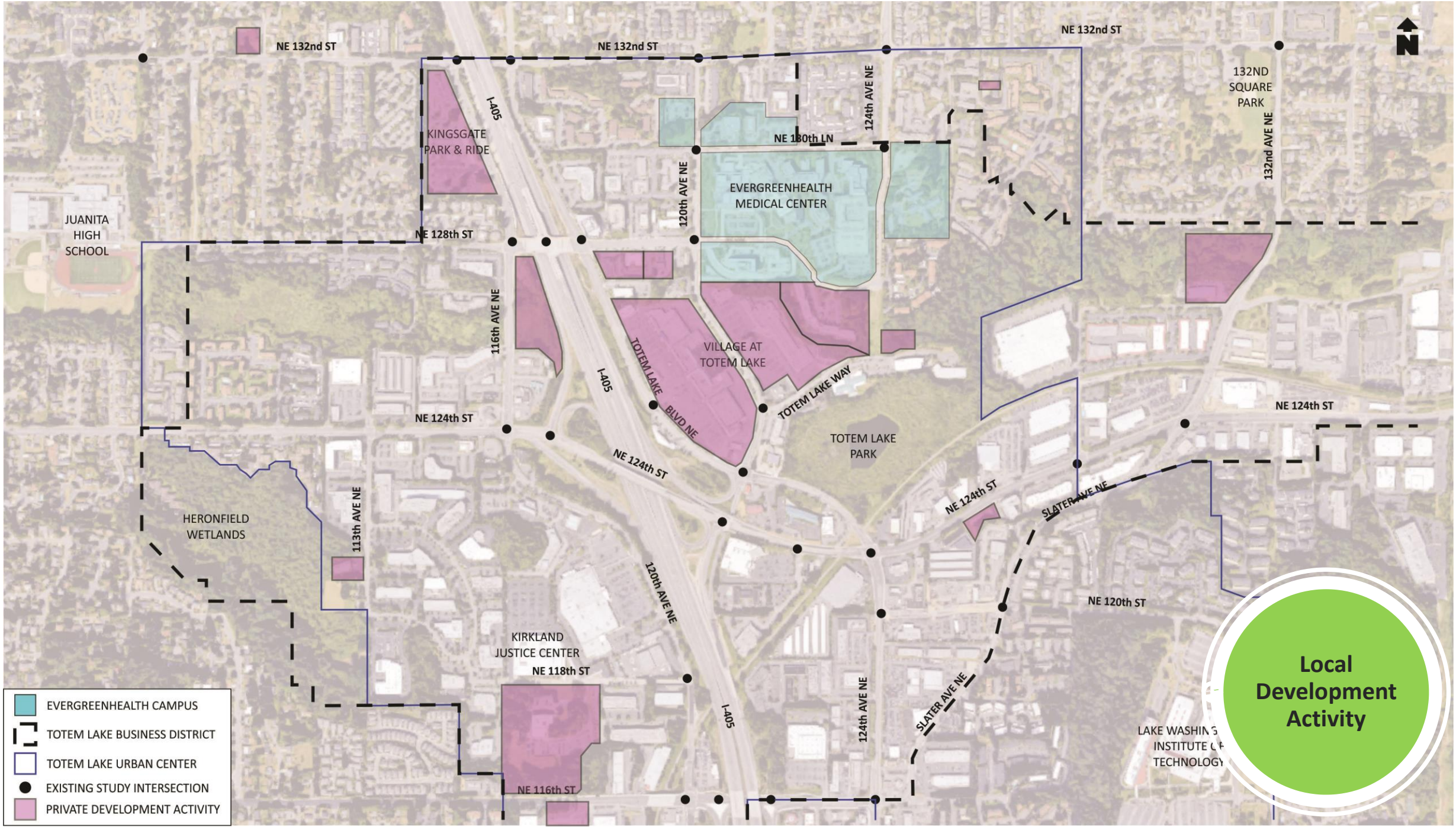
Next Steps:

City of Kirkland:

- Deliver funded projects
- Continue to pursue funding for remaining priority projects including non-motorized improvements

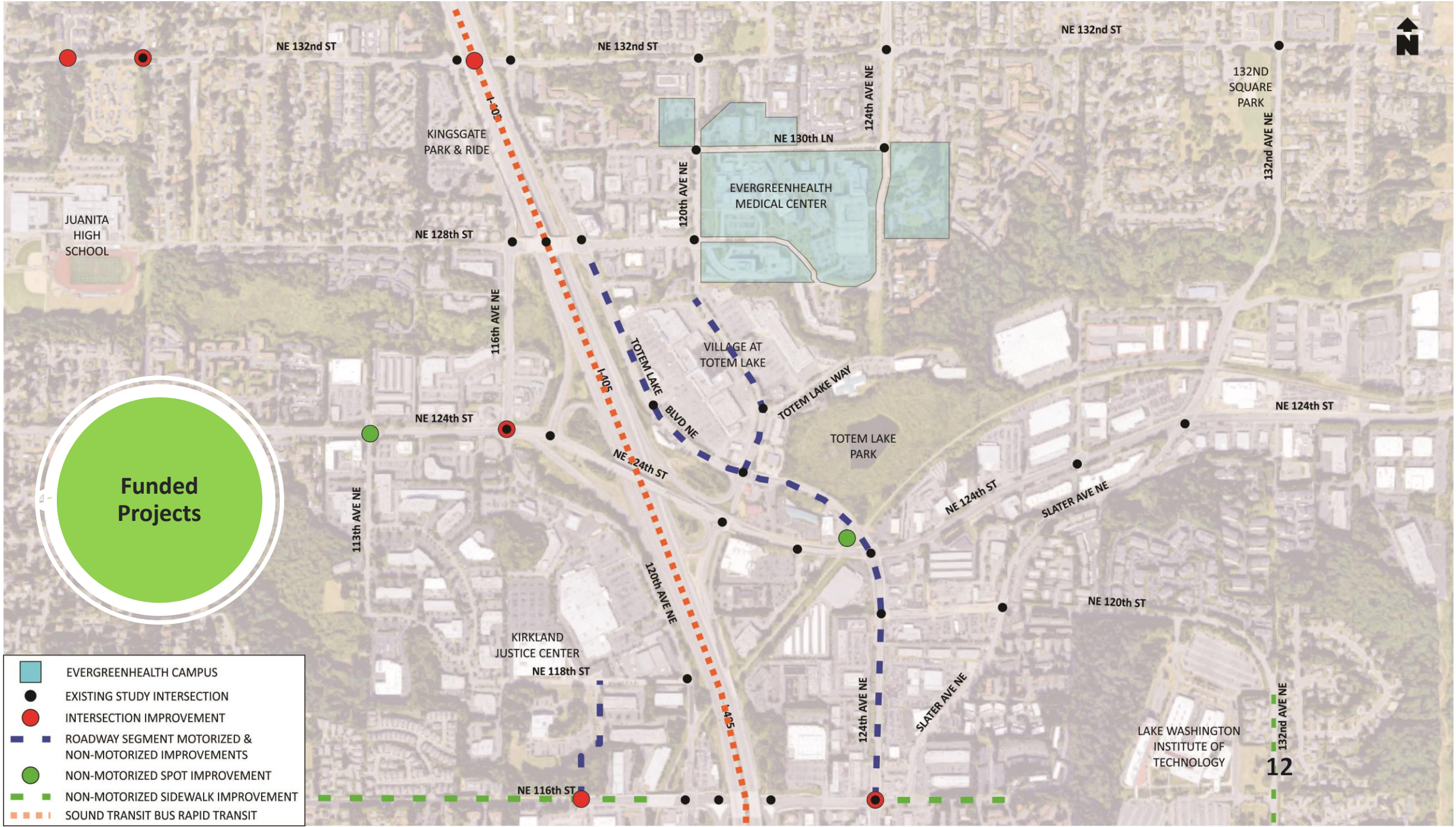
EvergreenHealth:

- Support City of Kirkland Grant applications for remaining priority projects including non-motorized improvements
- Support and advocate for Totem Lake Blvd at NE 128th Street westbound left turn project development



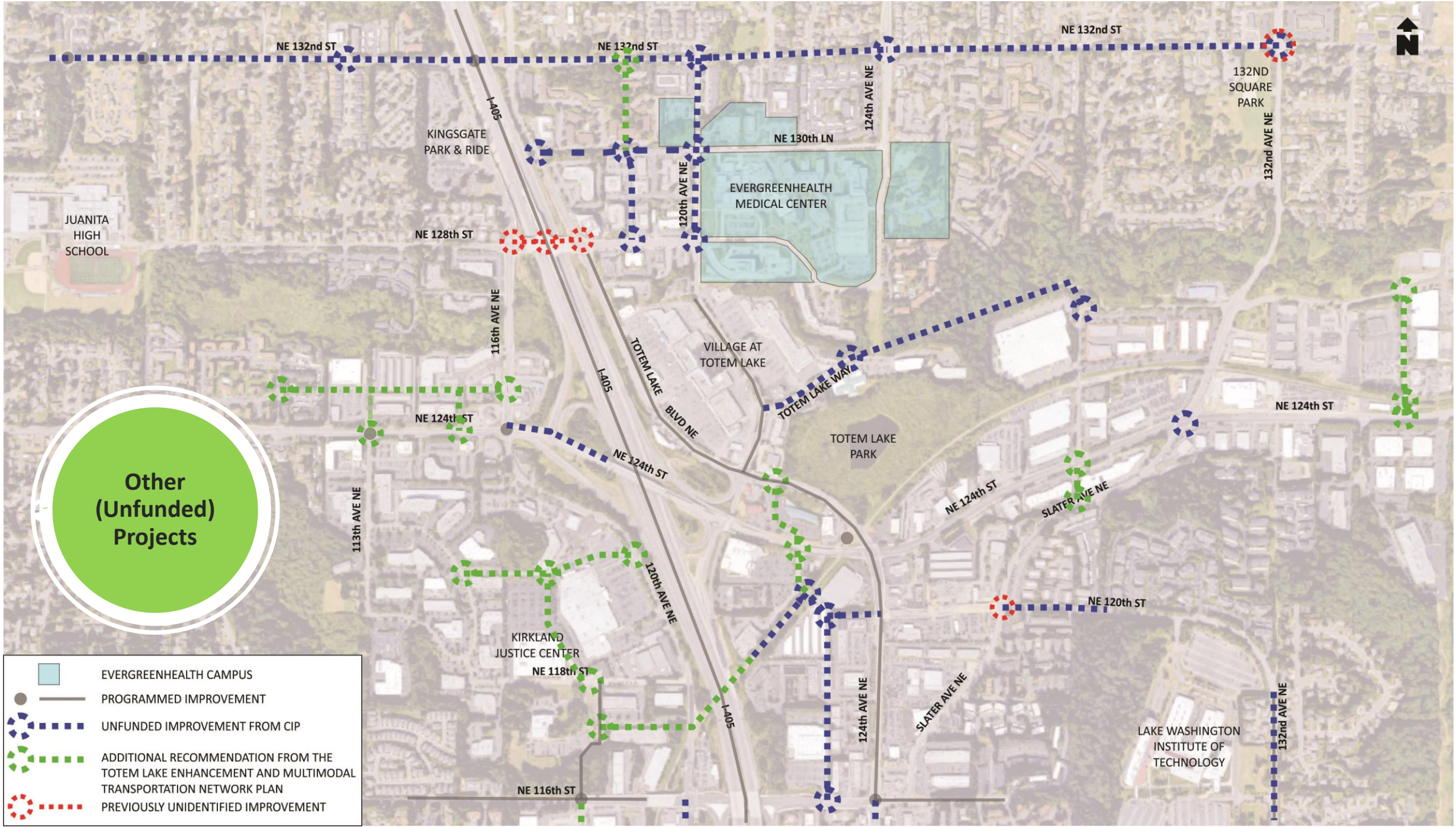
- EVERGREENHEALTH CAMPUS
- TOTEM LAKE BUSINESS DISTRICT
- TOTEM LAKE URBAN CENTER
- EXISTING STUDY INTERSECTION
- PRIVATE DEVELOPMENT ACTIVITY

Local
Development
Activity



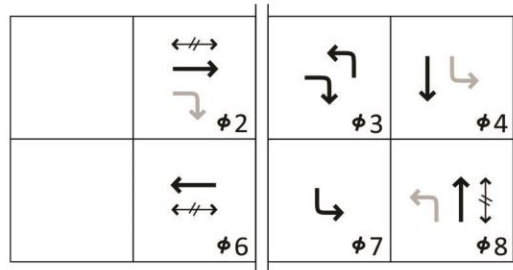
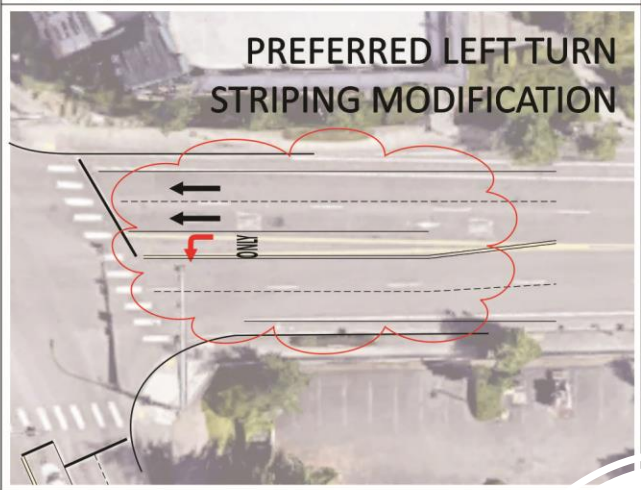
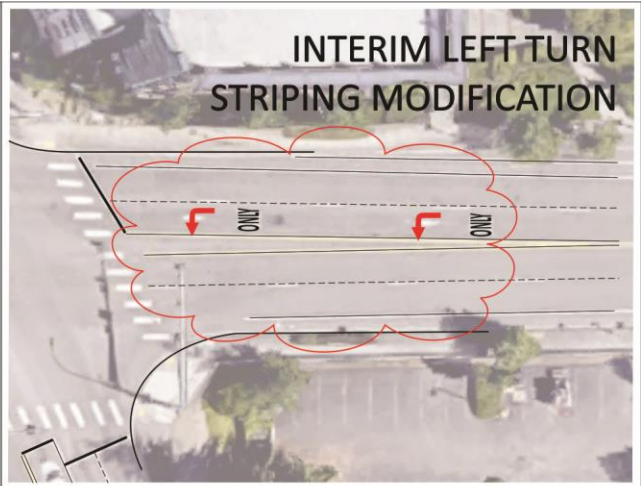
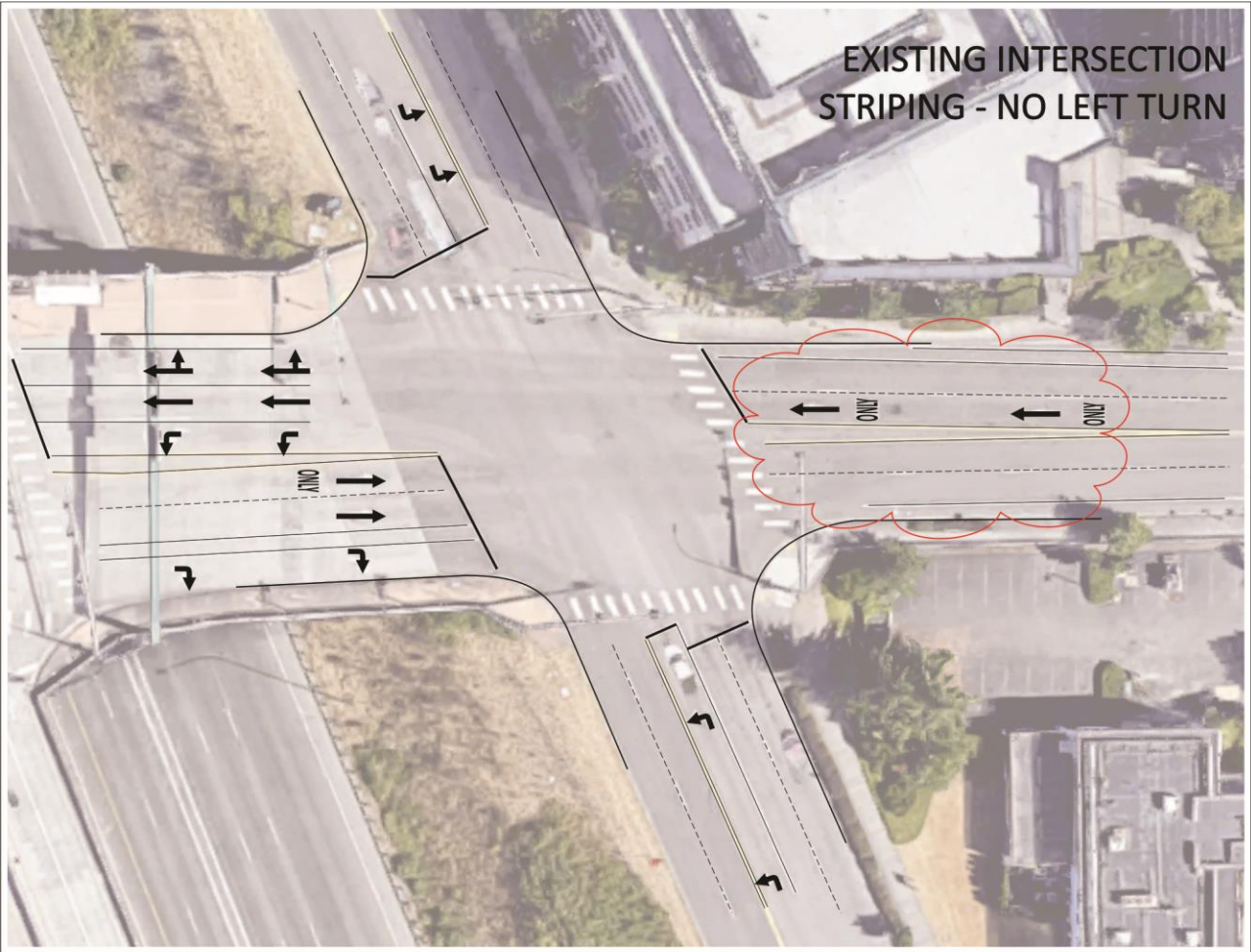
Funded Projects

- EVERGREENHEALTH CAMPUS
- EXISTING STUDY INTERSECTION
- INTERSECTION IMPROVEMENT
- ROADWAY SEGMENT MOTORIZED & NON-MOTORIZED IMPROVEMENTS
- NON-MOTORIZED SPOT IMPROVEMENT
- NON-MOTORIZED SIDEWALK IMPROVEMENT
- SOUND TRANSIT BUS RAPID TRANSIT

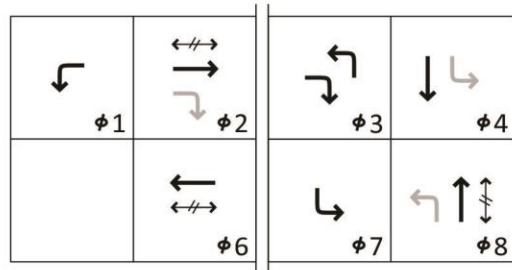


Other
(Unfunded)
Projects

- EVERGREENHEALTH CAMPUS
- PROGRAMMED IMPROVEMENT
- UNFUNDED IMPROVEMENT FROM CIP
- ADDITIONAL RECOMMENDATION FROM THE TOTEM LAKE ENHANCEMENT AND MULTIMODAL TRANSPORTATION NETWORK PLAN
- PREVIOUSLY UNIDENTIFIED IMPROVEMENT




Without Improvement
(Existing)





With Improvement
(Protected WB Left Turn)


NE 128th St.
WB Left-Turn
to Totem Lake
Blvd.





 EVERGREENHEALTH CAMPUS


 KINGSGATE PARK & RIDE

 I-405 FREEWAY STATION

 TOTEM LAKE TRANSIT CENTER

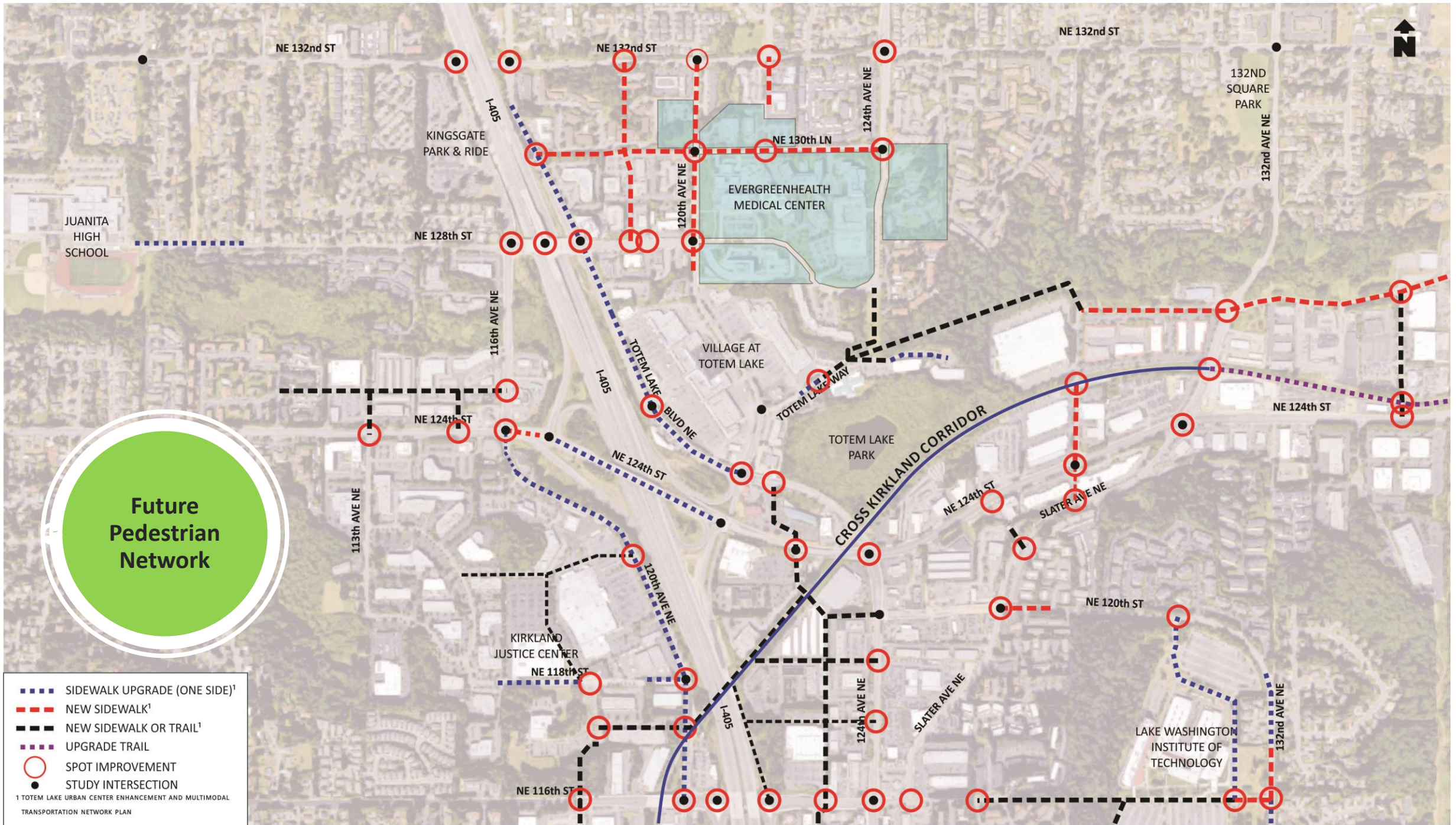
 FUTURE RAPIDRIDE ROUTES (KING COUNTY METRO)

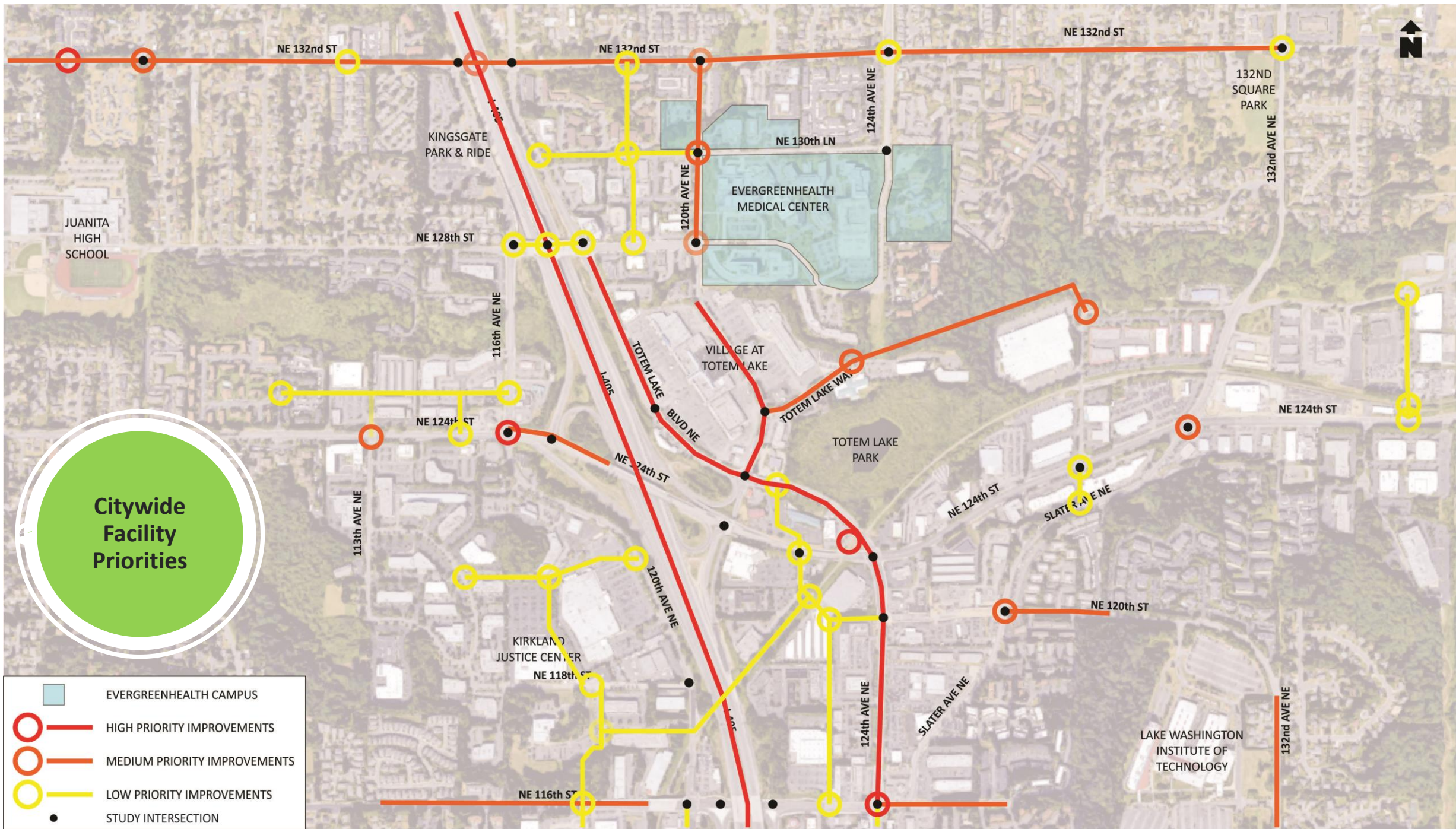
 FUTURE LOCAL AND EXPRESS TRANSIT SERVICE ROUTES

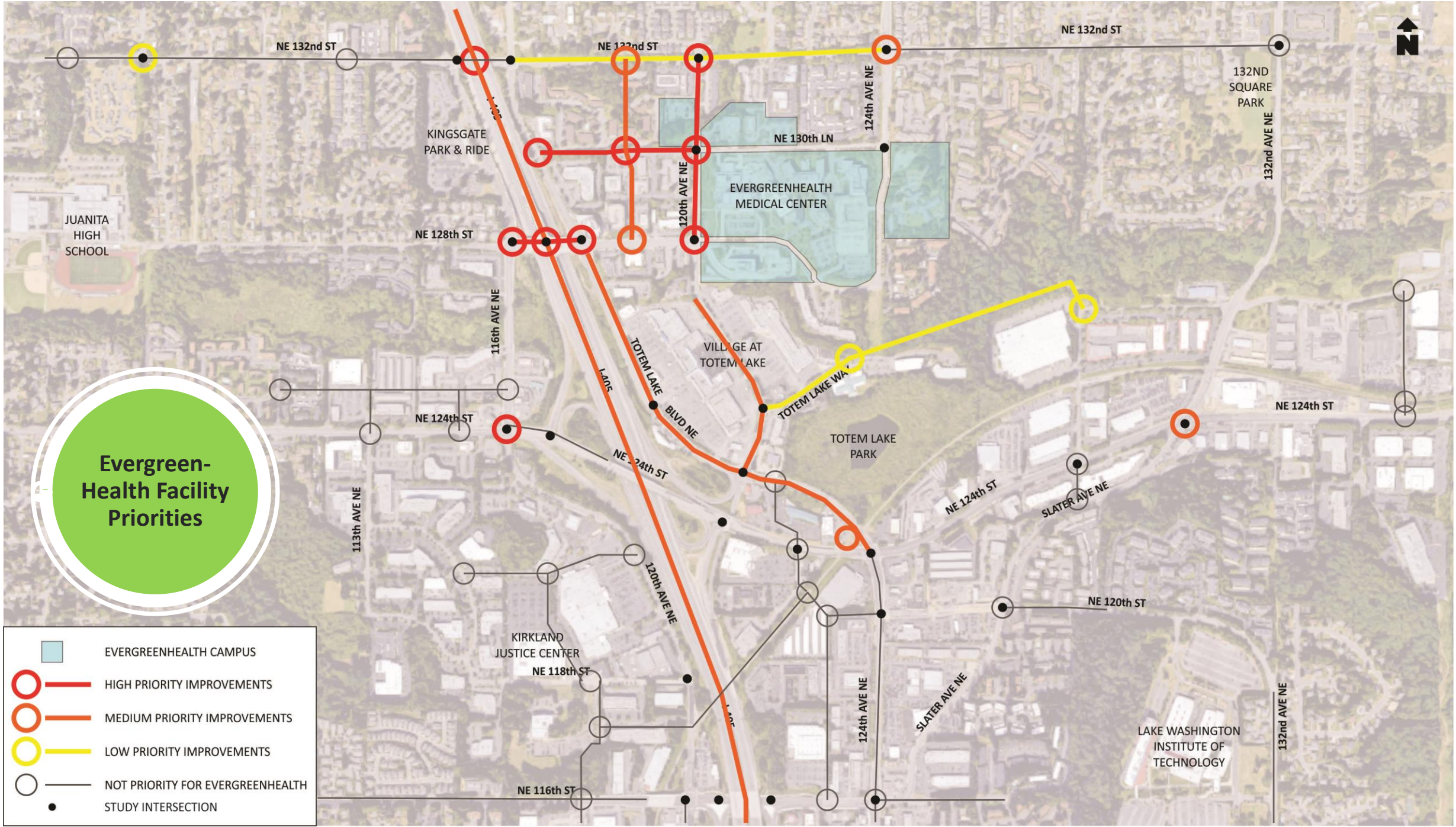
 STUDY INTERSECTION

Future Transit Network









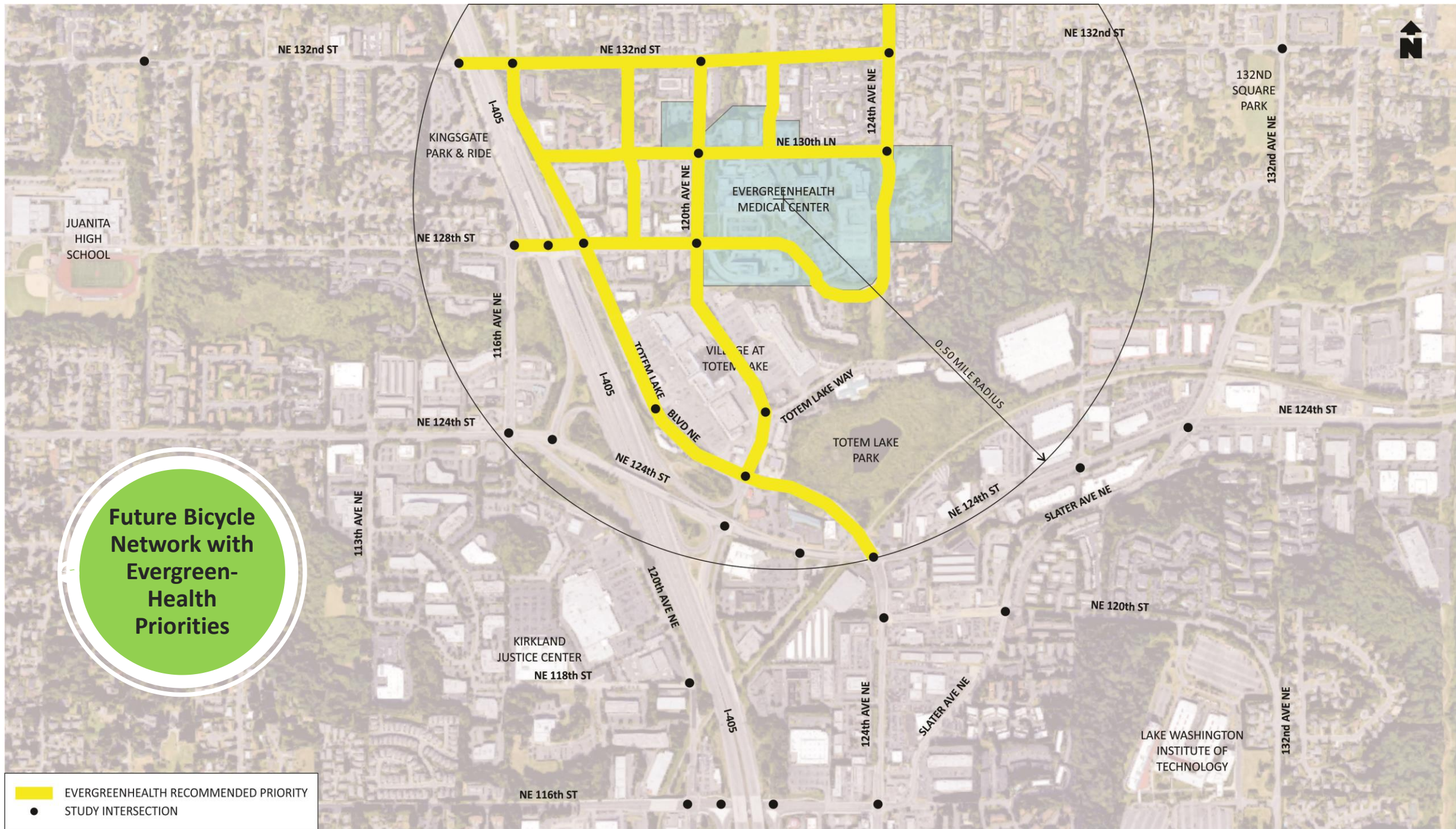
Evergreen-Health Facility Priorities

- EVERGREENHEALTH CAMPUS
- HIGH PRIORITY IMPROVEMENTS
- MEDIUM PRIORITY IMPROVEMENTS
- LOW PRIORITY IMPROVEMENTS
- NOT PRIORITY FOR EVERGREENHEALTH STUDY INTERSECTION






Future Bicycle Network with Evergreen-Health Priorities

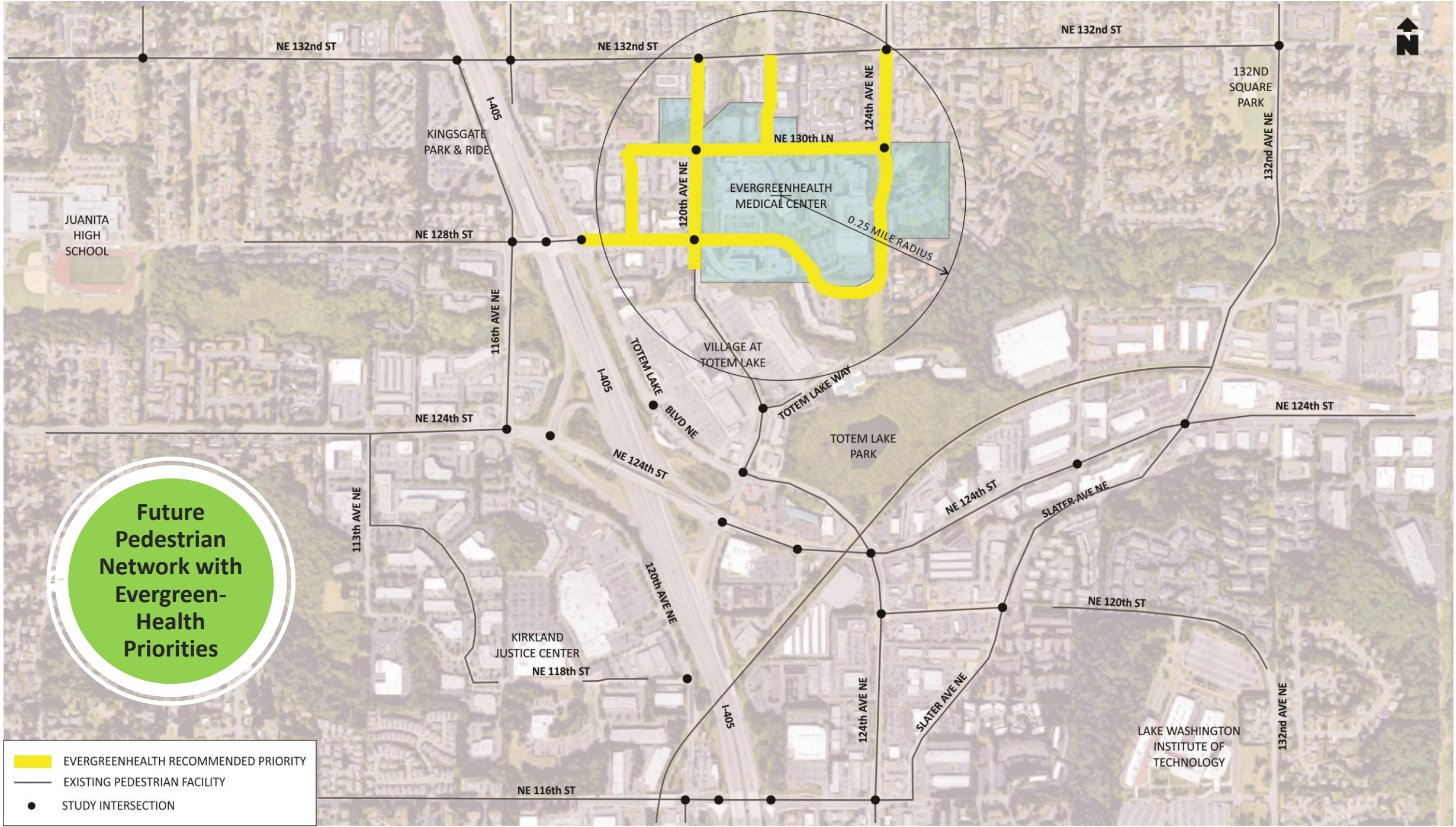
- EVERGREENHEALTH RECOMMENDED PRIORITY
- STUDY INTERSECTION





**Future
Pedestrian
Network with
Evergreen-
Health
Priorities**

-  EVERGREENHEALTH RECOMMENDED PRIORITY
-  EXISTING PEDESTRIAN FACILITY
-  STUDY INTERSECTION





Thank you!



8250 - 165th Avenue NE
Suite 100
Redmond, WA 98052-6628
T 425-883-4134
F 425-867-0898
www.tsinw.com