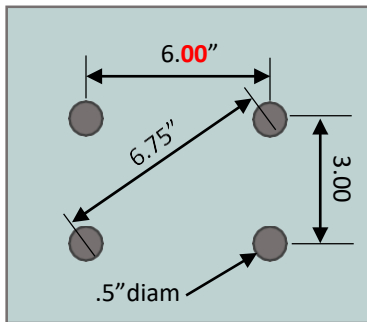


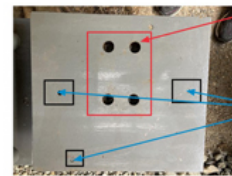


City of Kirkland Park Lane plinth attachment details

- Art must be designed with adequate base to support it during wind events and possible pedestrian contact.
- Artist is responsible for installing and de-installing works with assistance and oversight from City staff.
- Artist shall contact City of Kirkland staff to coordinate installation day and time.
- Artist shall confirm installation 24 hours in advance (City staff may need to reserve parking stalls near the plinth and ensure that installation occurs when Park Lane is open to vehicles).
- Artist shall deliver art to Park Lane at designated time (park in designated parking stalls do not block travel lane).
- Art must be able to be mounted to pre-established mounting bolts (detail below).
- Artist is responsible for orientation of art on plinth.
- Artist shall secure art to plinth with mounting hardware.



(mounting bolt pattern)



Holes to attach platform on top of bolts in the plinth. Not to be used for attaching art.

Holes drilled by prior artist. Artist will use existing holes or drill new holes to bolt their art.



City can provide tamper proof bolts and nuts.