

# Enhanced Police Services and Community Safety Sales Tax Measure Informational Presentation

## ENHANCED SAFETY For a Thriving City



Summer/Fall 2018

# Enhanced Police Services and Community Safety Sales Tax Measure

## I. A Thriving City

## II. Challenges to Public Safety

1. New Buildings, New Businesses, New People
2. Property Crimes
3. Mental Health, Drug Addiction and Homelessness
4. Gun Safety and School Safety
5. Financial Forecast

## III. 2018 Community Safety Sales Tax Ballot Measure (.1%)



Accessible  
Desirable  
Livable

Waterfront-centric  
Multi-generations  
Business  
Peaceful  
Affordable

Convenience  
Balanced-Living

Trees  
Creative

Clean

Charming

Parks  
Complete  
Compassionate

Downtown  
Lifestyle

Personality  
Taxes

Millennial  
Close-Knit

Bikes  
Cleaner

Mobile  
Village

Walkable  
Vibrant

Waterfront

Urban

Accommodating  
Family-friendly

Not-crowded  
Non-congested

View

Kind  
Inviting  
Quality

Quaint  
Dense

Modern  
Bike

Safe

Self-sustaining  
Balance

Unique

Balanced  
Vital

Development

Environmentally-friendly

Kumbayah  
Entertaining

Non-bigoted  
Recreational

Progressive

Portland  
Bullet-proof  
Encompassing

Asphalt-jungle  
Neighborhoods

Affordable-housing  
Village-within-a-city

Quaint  
Dense

Kind  
Inviting  
Quality

Modern  
Bike

Safe

Self-sustaining  
Balance

Unique

Balanced  
Vital

Development

Environmentally-friendly

Kumbayah  
Entertaining

Non-bigoted  
Recreational

Progressive

Connected

Family

Sustainability  
Cohesiveness

Diverse

Relaxing  
Tressless  
Cohesive

Parking

Green

Comprehensive  
Relaxed

Artistic  
Sunshine  
Human-scale

Subway-Transit  
Self-contained  
Uncluttered

Open-Space

Public-transportation

Planned  
Futuristic  
Destination

Energetic  
Connection  
Less-traffic

Inclusive

No-Affordable-Home  
Economics

Constant  
Mixed-Use

Attractive  
Homey  
Marina

Optimized

Open  
Community  
Convenient

Beautiful

Community

Beautiful

Optimized

Open

Community

Beautiful

Optimized

Open

Community

Beautiful

Optimized

Open

Community

Beautiful

Optimized

Open

Community

Beautiful

Optimized

Open

Community

Beautiful

Optimized

Open

Community

Beautiful

Optimized

Open

Community

Beautiful

Optimized

Open

Community

Beautiful

Optimized

Open

Community

Beautiful

Optimized

Open

Community

Beautiful

Optimized

Open

Community

Beautiful

Optimized

Open

Community

Beautiful

Optimized

Open

Community

Beautiful

Optimized

Open

Community

Beautiful

Optimized

Open

Community

Beautiful

Optimized

Open

Community

Beautiful

Optimized

Open

Community

Beautiful

Optimized

Open

Community

Beautiful

Optimized

Open

Community

Beautiful

Optimized

Healthy  
Friendly  
Thriving  
Sustainable  
Natural  
High-Tech  
Dynamic  
Pleasant

# There's A Plan For That!



Comprehensive Plan



Cross Kirkland  
Corridor Master Plan



Transportation Master  
Plan



Juanita Drive Corridor  
Plan



Parks, Recreation and  
Open Space Plan



Totem Lake Park  
Master Plan



Urban Forestry Plan



Parks and Street  
Levies



Surface Water Master  
Plan



Join the Conversation

# SUMMARY OF DEVELOPMENT ACTIVITY (May 2018)

Status of Development	Residential Projects (Units)	Office Projects (Sq. Ft.)	Commercial Projects (Sq. Ft.)	Institutional Projects (Sq. Ft.)
1. Under Construction	1,101	392,375	369,619	267,000
2. Building Permits Completed; No Construction	43	51,407	41,035	0
3. Building Permit Appl. In Review	1,430	58,445	65,400	0
4. Zoning Permit Approved, No Building Permit Application	277	133,800	18,020	21,430
5. Zoning Permit Appl. Under Review	1,128	12,887	115,250	257,745
6. Projects in Pre-Permit Review	533	231,213	28,635	34,750
<b>TOTAL</b>	<b>4,512</b>	<b>880,127</b>	<b>637,959</b>	<b>580,925</b>

**7,600 new residents and 4,500 new employees**



# Village at Totem Lake

Lower Mall



## Phase 1

- ▶ 273,600 s.f. retail
- ▶ 200 residential units

## Phase II

- ▶ 86,800 s.f. retail
- ▶ 650 residential units





# The Village at Totem Lake

<https://www.thevillageattotemlake.com/>

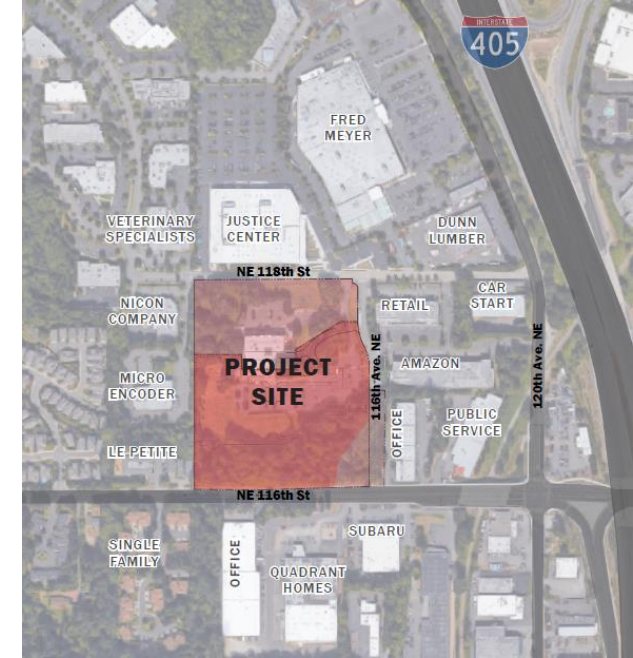




# Lifebridge NE 118th



1.) APPROACH FROM THE NORTH ALONG 118th AVE. NE



- 153 senior units
- 409 residential units





# Kirkland Urban

<http://www.kirklandurban.com/>





# Kirkland Urban - corner of 6<sup>th</sup> & Central





# 434 Kirkland Way (MRM)



From Southwest

- 15,500 s.f. retail
- 171 residential units



From Plaza



From East

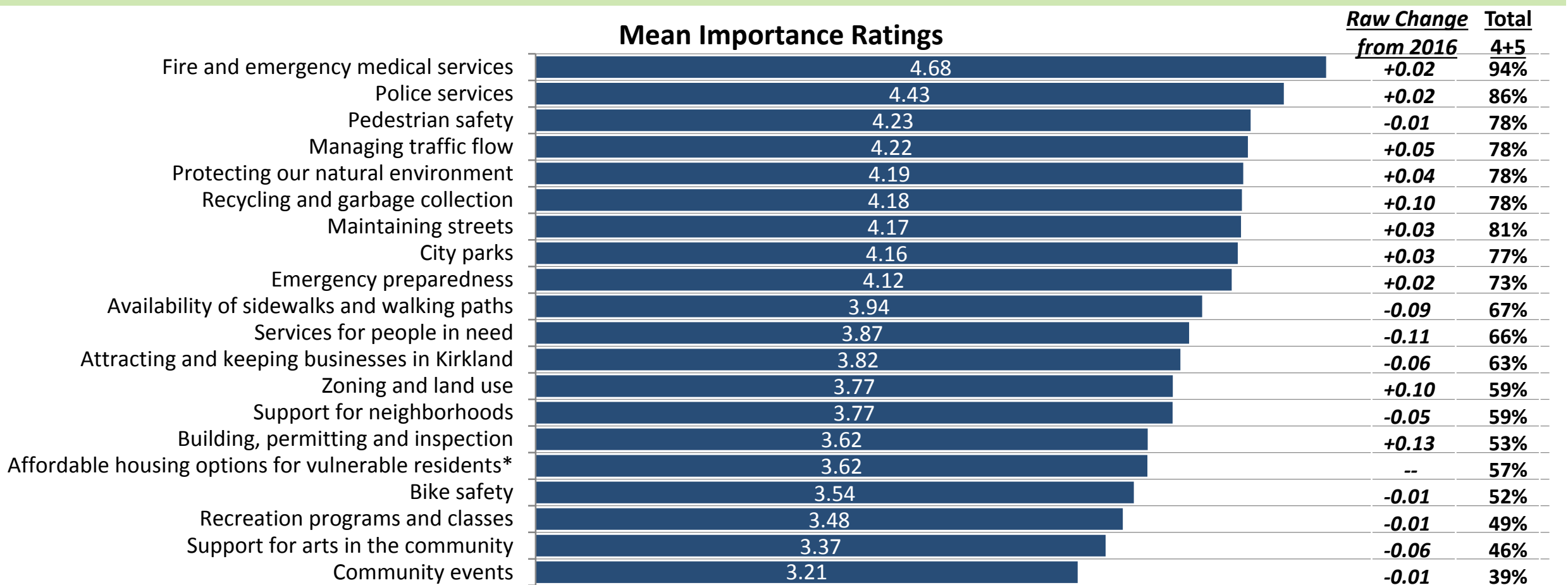


# Importance

May Survey



*Most services are seen as important (“4” or “5”) by a majority of residents. More than three-quarters consider Fire/EMS (94%), police (86%), maintaining streets (81%), managing traffic flow (78%), pedestrian safety (78%), protecting the environment (78%), and recycling/garbage (78%), and city parks (77%) to be important (4 or 5 out of 5).*



Q13-32. I’m going to read you a list of services and functions provided by the city. For each one, please tell me how important that city function is to you and your household. Use a scale of 1 to 5, where 1 means that it is “not at all important” and 5 means it is “extremely important.”

\* New item added to 2018 survey.



*Fire and EMS services (87% A or B), recycling (86%), police services (83%), and city parks (83%) remain the top-rated City services. Affordable housing options for vulnerable residents and managing traffic flow are the lowest rated services.*







Mean Performance Ratings		<u>Raw Change</u> <u>from 2016</u>	<u>Total</u> <u>A+B</u>
Fire and emergency medical services	4.49	+0.12	87%
Recycling and garbage collection	4.32	+0.02	86%
Police services	4.28	+0.13	83%
City parks	4.24	+0.13	83%
Recreation programs and classes	4.01	+0.10	65%
Pedestrian safety	3.98	+0.06	73%
Support for arts in the community	3.90	+0.08	64%
Community events	3.90	+0.02	63%
Emergency preparedness	3.81	+0.04	52%
Availability of sidewalks and walking paths	3.80	+0.09	64%
Protecting our natural environment	3.80	-0.07	64%
Bike safety	3.66	-0.00	54%
Maintaining streets	3.65	+0.01	62%
Support for neighborhoods	3.62	-0.02	49%
Attracting and keeping businesses in Kirkland	3.58	+0.12	51%
Services for people in need	3.28	-0.31	30%
Building, permitting and inspection	3.24	-0.13	34%
Zoning and land use	3.14	-0.07	33%
Managing traffic flow	3.02	-0.13	35%
Affordable housing options for vulnerable residents*	2.60	--	16%

\* New item added to 2018 survey.

Q33-52. Using the same list, please tell me how well you think the city is doing in each area. Use an A through F grading scale where A means Excellent, B means Above Average, C is Average, D is Below Average, and F is Failing.



# Public Safety Funding Over Time

	2010	2018	Increase
 <p>Police</p> <p>Budget</p>	 <p>66 Police Officers</p> <p>\$17,188,000</p>	 <p>100 Police Officers</p> <p>\$26,383,000</p>	<p>34 Police Officers</p> <p>\$9.2M</p>
 <p>Fire</p> <p>Budget</p>	 <p>85 Firefighters</p> <p>\$14,200,000</p>	 <p>102 Firefighters</p> <p>\$20,664,000</p>	<p>17 Firefighters</p> <p>\$6.2M</p>



# Public Safety Challenges - Property Crimes



Mail Theft



Car Prowls



Shoplifting



Burglaries



# Public Safety Challenges - Those In Need

**Hello**  
my name is

**Depression**

**BIPOLAR**

**ANXIETY**

Eating Disorder

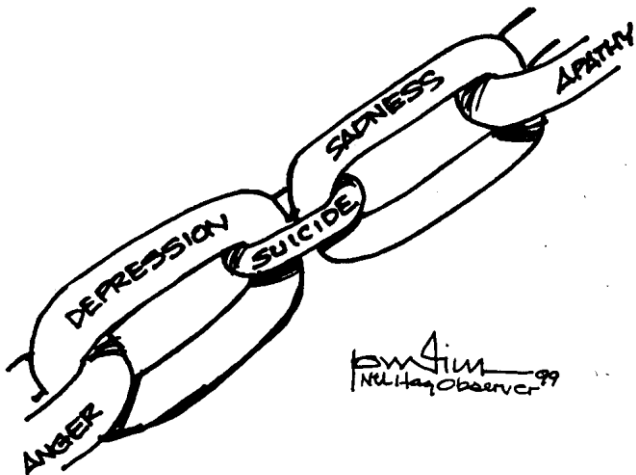
**schizophrenia**

**SELF HARM**

**PTSD**

**DUAL DIAGNOSIS**

Mental Illness and Suicide



Drug Addiction



Homelessness



Domestic Violence

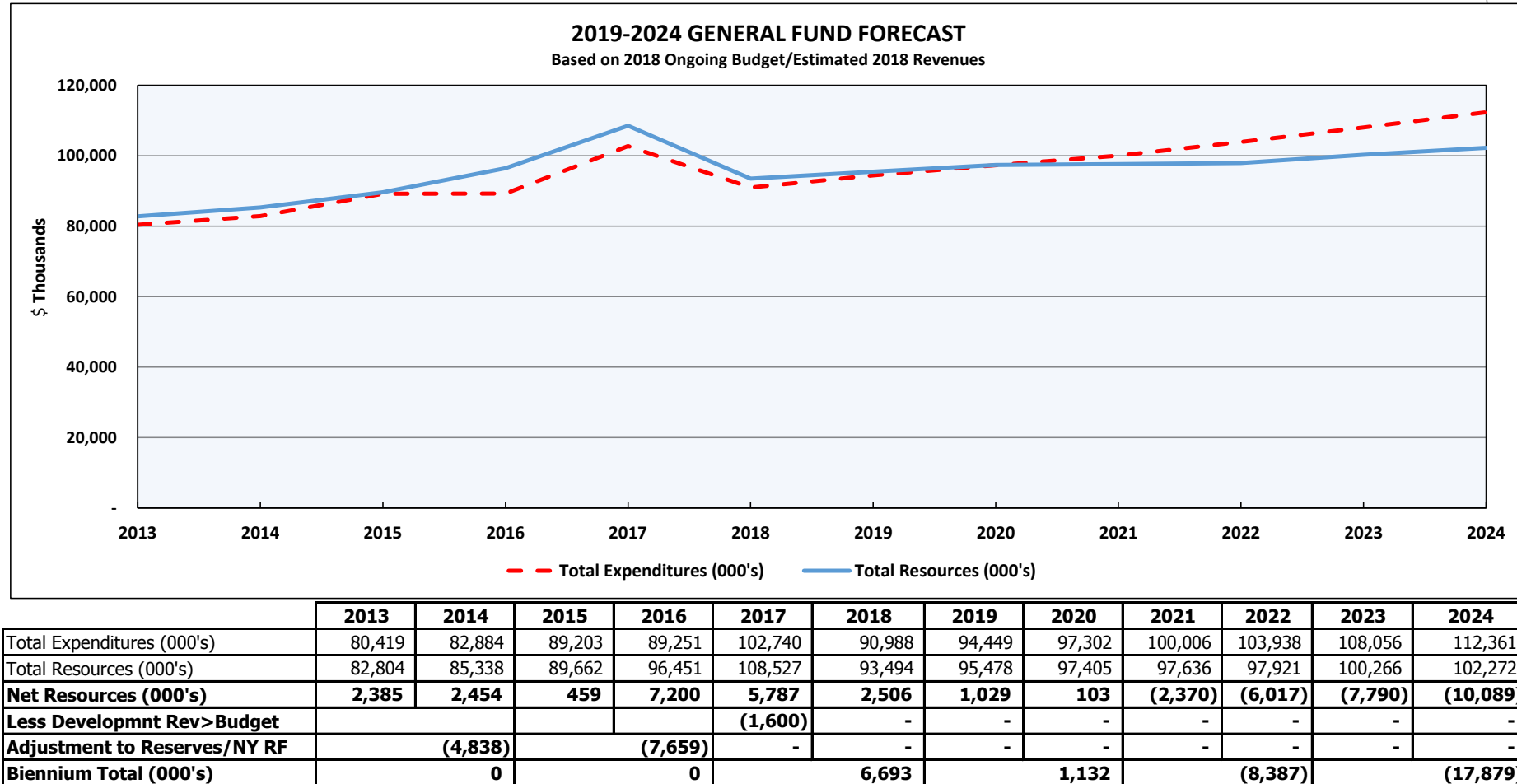


# Public Safety Challenges - School Safety





# Challenges - Sustainable Services, Revenue





# 2018 Community Outreach

## Community Survey - May 2018

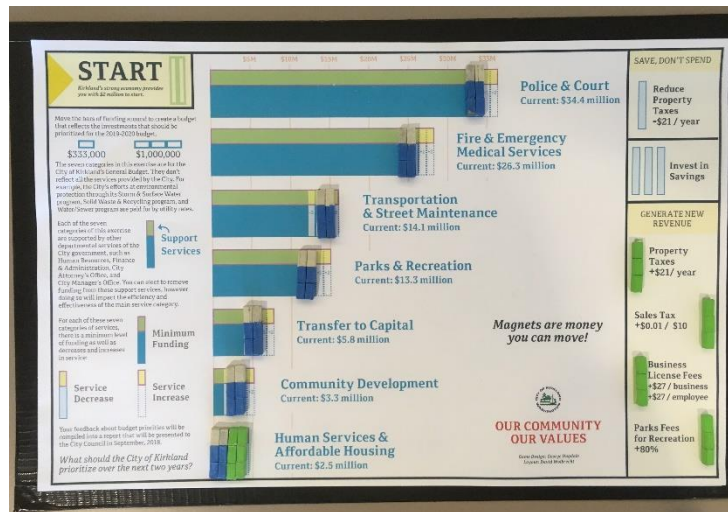


## Gun Safety and Community Safety Town Hall



## Public Safety Survey - July 2018

## Budget Exercise



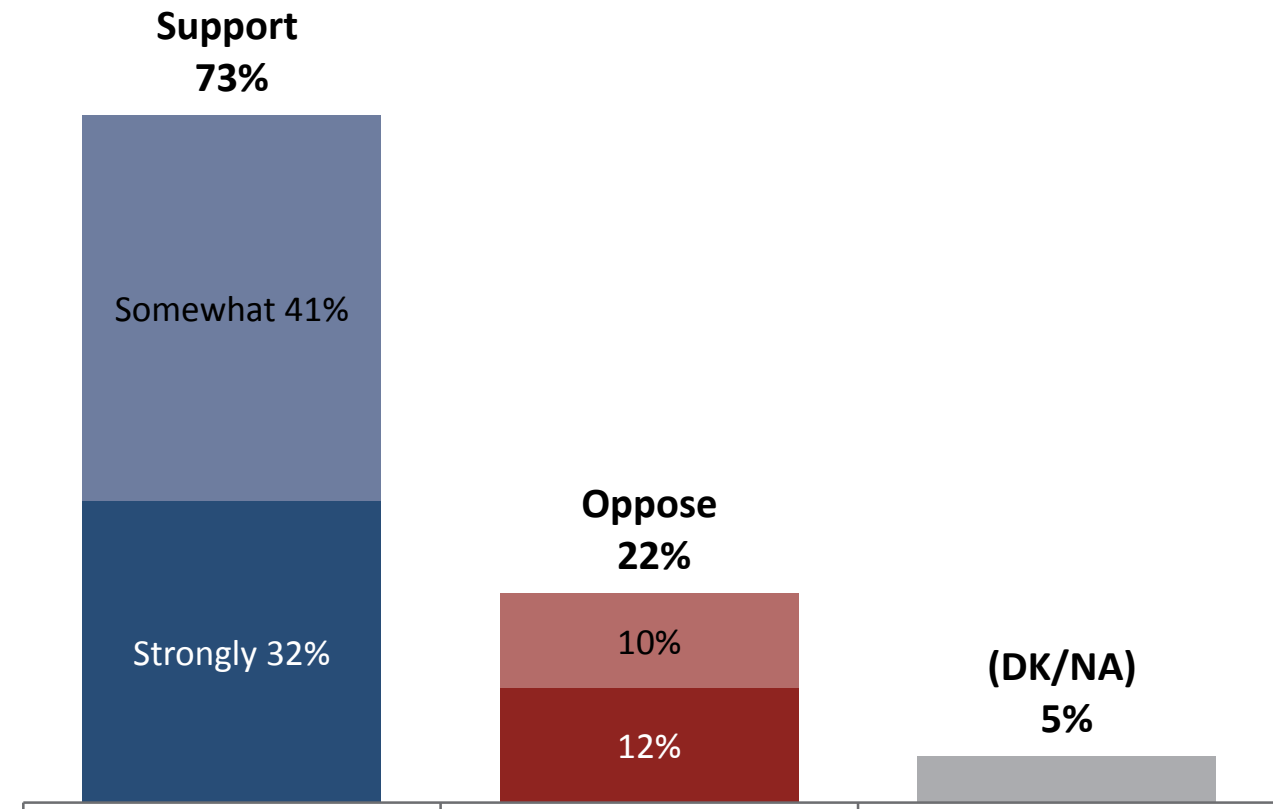


# Initial Support for Investments

July Survey

Nearly three-quarters of residents at least somewhat support the proposed mix of community safety investments. Although relatively few (1-in-5) oppose the proposed investments but positive intensity is also relatively low, with a third saying they strongly support them.

*“This proposal would fund enhanced police services and firearm safety investments in Kirkland. It includes 5 additional full-time police officers, focused on illegal drugs, car prowls, burglaries, mail theft, and shoplifting; 4 additional full-time school resource officers in middle schools; 1 full-time mental health professional to help address 911 calls with mental health complications; annual funding to expand mental health and human services programs focusing on domestic violence and suicide prevention; new funding for gun safety training and subsidies for safe gun storage; and funds to expand existing programs aimed at reducing homelessness. This proposal would cost \$1.8 million each year.”*

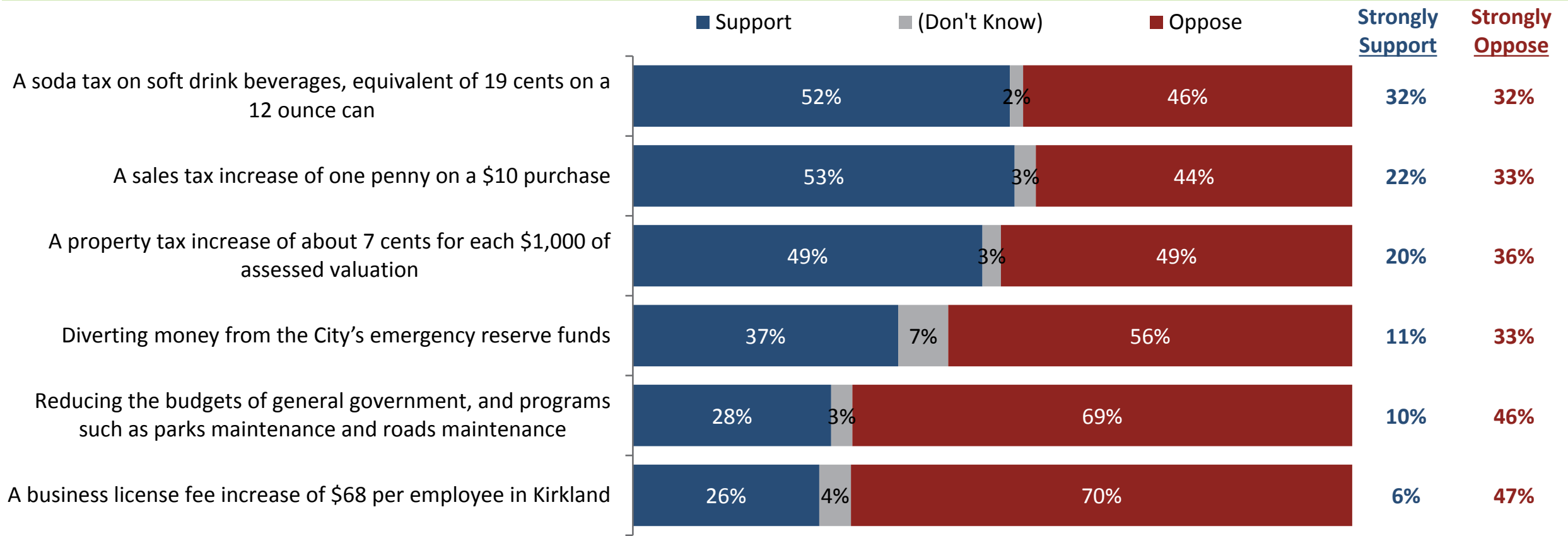


# Support for Funding Sources

July Survey



Although residents are largely split in their reactions to each funding mechanism, about half would prefer funding investments via a sales tax, soda tax, and property tax over diverting money from the rainy day fund or other programs. The business license fee increase is the least popular of all of the potential sources tested.



Q22-27. The proposal I described earlier would cost approximately \$1.8 million each year. There is a number of different ways those investments could be funded, either by diverting funds from existing sources or by raising new tax revenue.”  
For each of the following, say whether you would strongly support, somewhat support, somewhat oppose, or strongly oppose using that revenue source to fund enhanced public safety investments.

18-6923 Survey of Kirkland Residents | 21



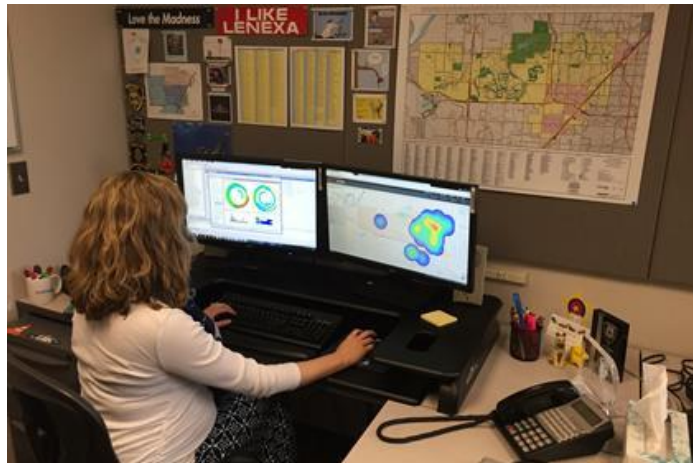
# Enhanced Police Services and Community Safety Ballot Measure

.1% Sales Tax (A penny on a \$10 purchase) - Generates approx. \$1.8 million/year





## Community Safety Investments - Community-Based Policing (9 Officers) (\$1.26 Million/year)



ProAct Unit - 4 Officers  
1 Support Staff Position  
(\$680,000/year)



4 SROs in Kirkland Middle Schools  
(\$320,000/year)



Neighborhood Resource Officer (1)  
with (1) Mental Health Professional  
(\$260,000/year)



Community Safety Investments - Mental Health and Human Service Programs  
(\$350,000/year)



Mental Health Programs



Suicide Prevention



Domestic Violence Prevention



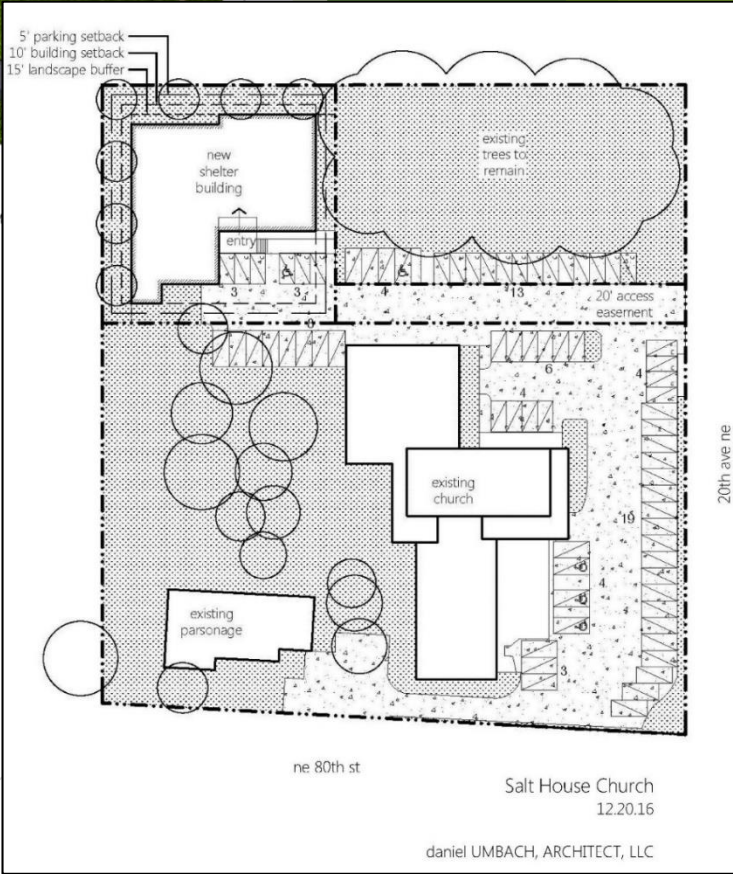
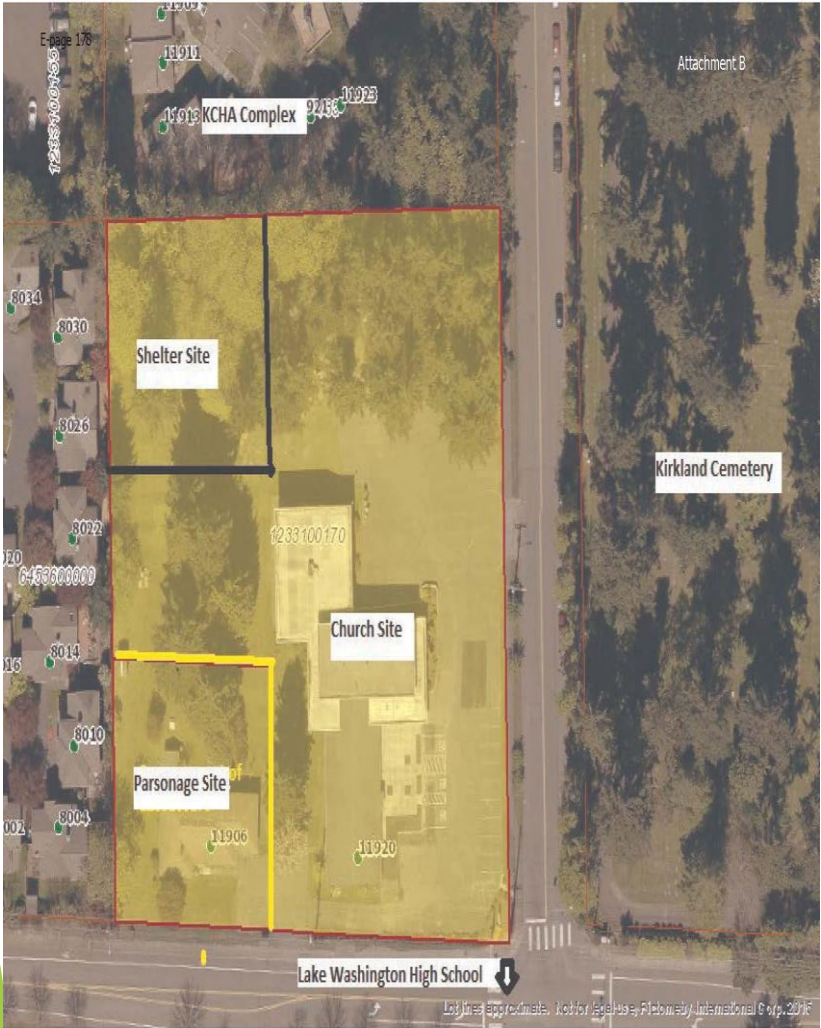
Youth Counseling Services



After School Programs



# Community Safety Investments - Women and Family Shelter Operations (\$100,000/year)





## Community Safety Investments - Gun Safety (\$100,000/year)

### Training for the Community



### Gun Locks



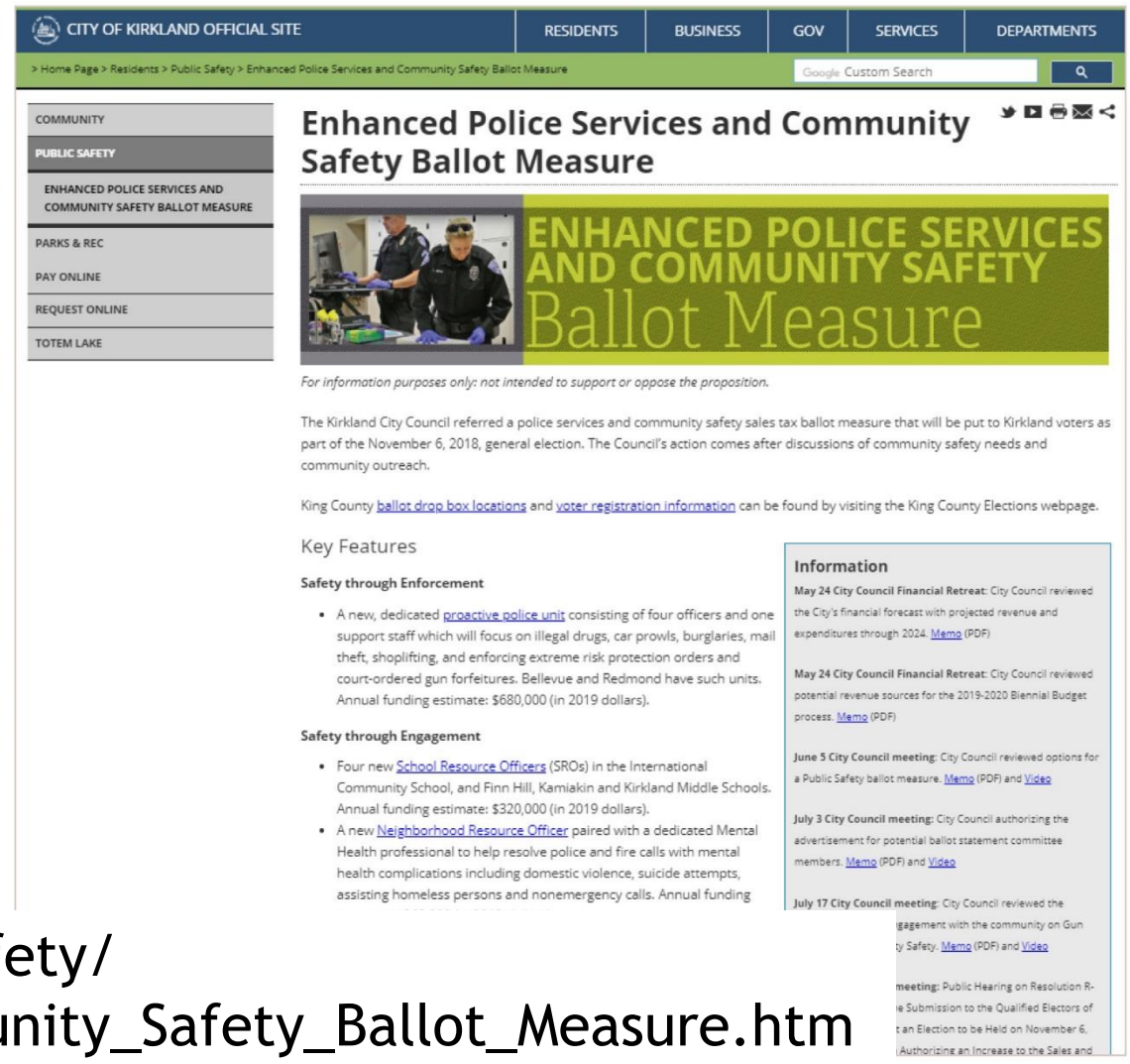
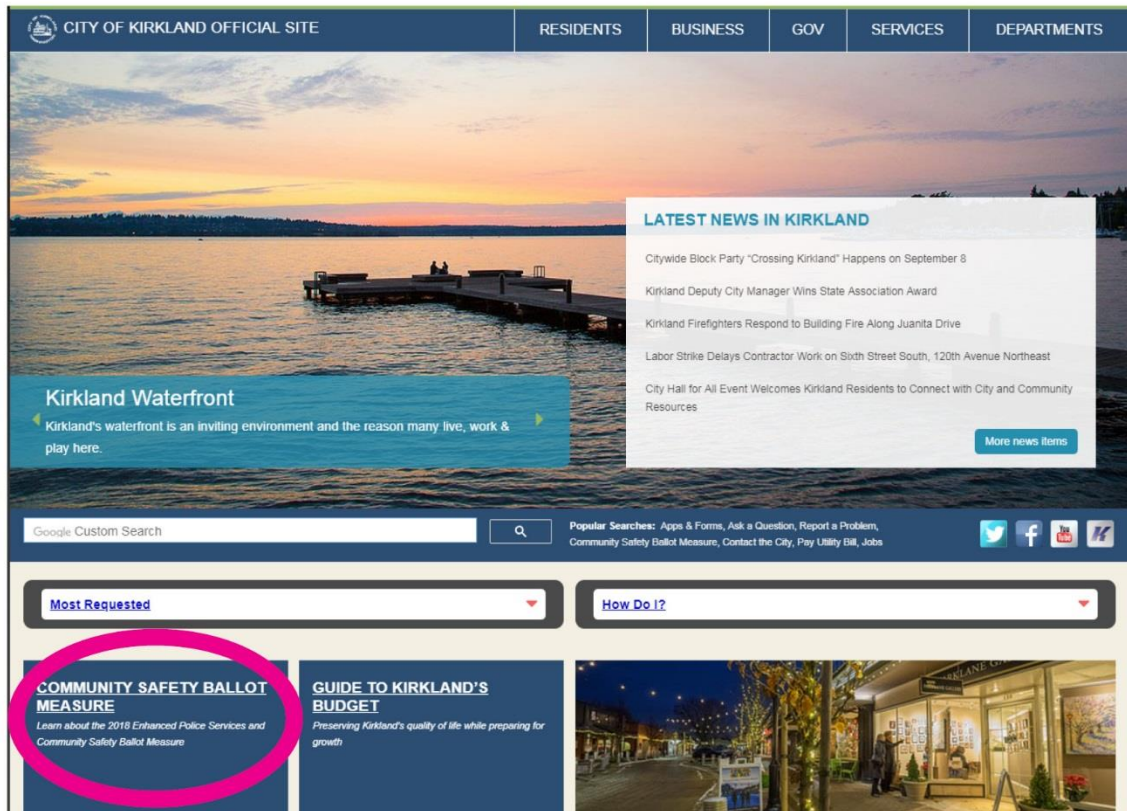
### Gun Safes



Keeping Guns Out of the Hands of Kids, Criminals and the Mentally Ill

# Questions?

www.kirklandwa.gov

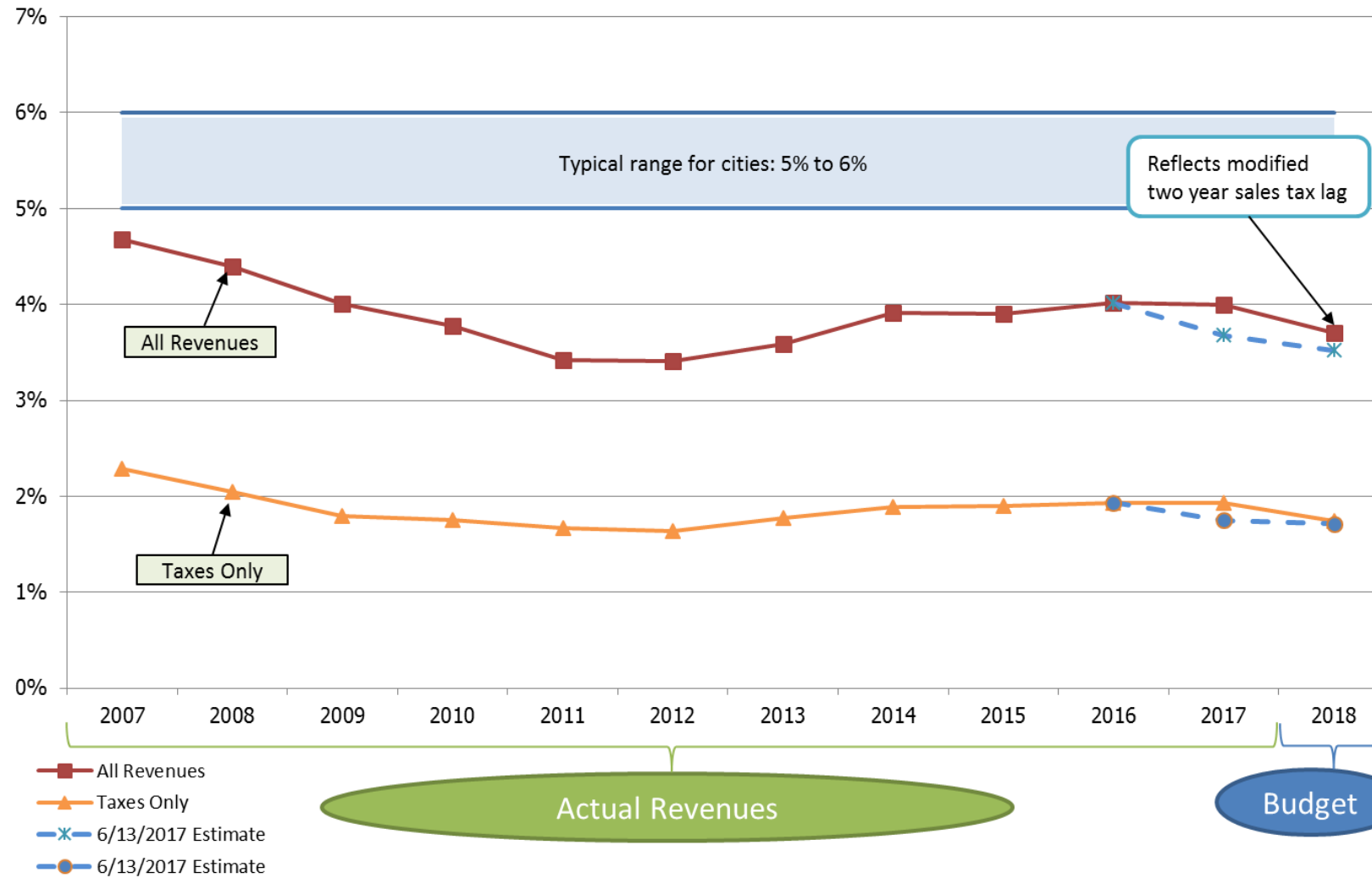


www.kirklandwa.gov/Residents/Public\_Safety/  
Enhanced\_Police\_Services\_and\_Community\_Safety\_Ballot\_Measure.htm



# Responsive Services, Responsible Tax Levels

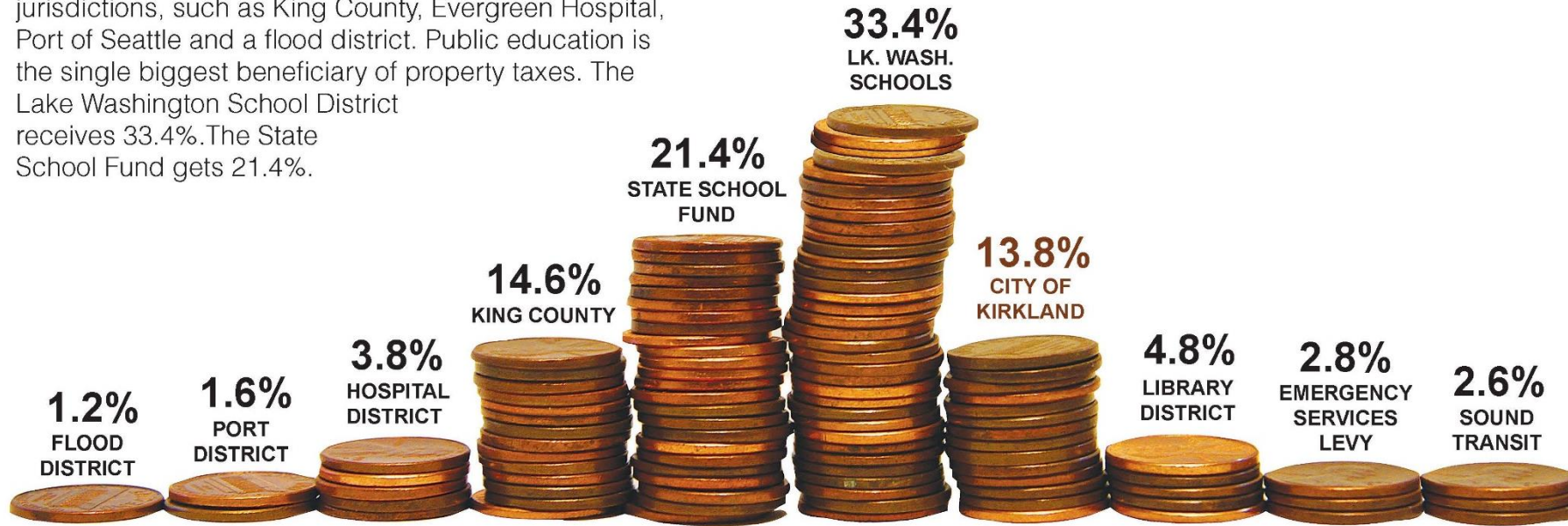
## The Price of Government City of Kirkland, Washington (Revenue as a percent of Aggregate Personal Income)



## PROPERTY TAX IS ONE OF KIRKLAND'S MOST SIGNIFICANT SOURCES OF REVENUE.

It accounts for 17.2% of the General Fund. However, Kirkland receives only 13.8% of residents' property taxes. The other 86.2% is divided up between nine jurisdictions, such as King County, Evergreen Hospital, Port of Seattle and a flood district. Public education is the single biggest beneficiary of property taxes. The Lake Washington School District receives 33.4%. The State School Fund gets 21.4%.

# WHERE PROPERTY TAXES GO



## DID YOU KNOW

State law limits Kirkland to an annual increase of its regular property tax levy revenue by the amount of inflation or by 1%, whichever is less. Taxes on new construction also add to the property tax levy. Only voters can give Kirkland the authority to exceed this limitation.



# Investment Priority

July Survey



*Of the potential investments tested, residents rated a mental health professional to assist police and EMS, additional homelessness program funding, and increased funding for mental health, human services, and after school programs as the highest priorities. Although a majority of residents rated each investment at least a 5 out of 7, intensity was lowest for gun safety training/subsidies, and additional SROs.*

