

NE 128th Street Multimodal Corridor Study

Draft Recommended Improvements

City Council
February 1, 2022

Kim Scrivner
Transportation Planner

Michael Lapham
KPG

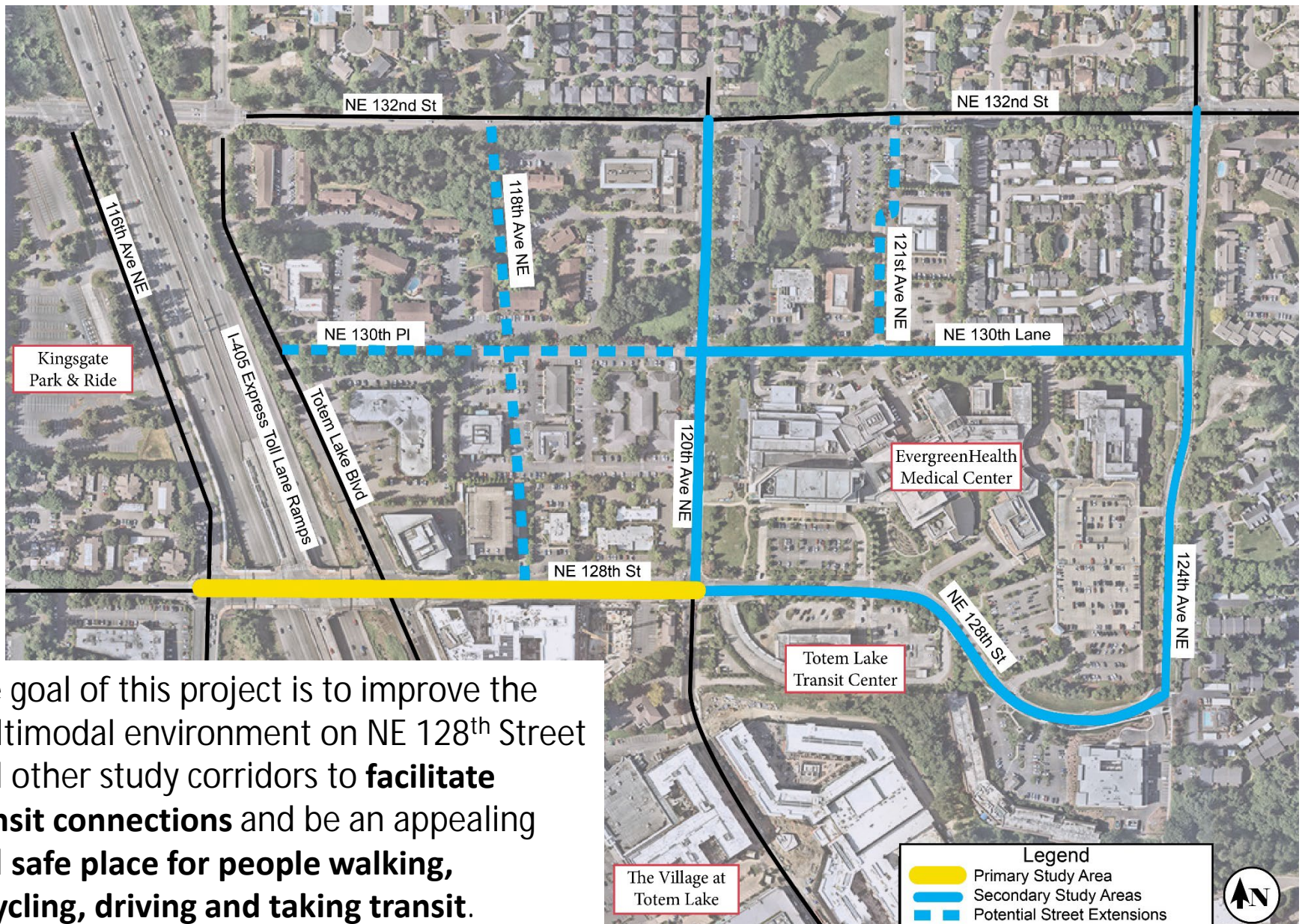


Previous Plans and Studies

- Evergreen Health/Totem Lake Traffic Study (2019)
- Kirkland Transit Implementation Plan (2019)
- Totem Lake Urban Center Enhancement & Multimodal Transportation Network Plan (2018)
- Totem Lake Business District Plan (Updated 2015)
- Stride Bus Rapid Transit (BRT) plans and designs
- RapidRide K Line preliminary design
- Private development plans and designs



Project Study Areas



The goal of this project is to improve the multimodal environment on NE 128th Street and other study corridors to **facilitate transit connections** and be an appealing and **safe place for people walking, bicycling, driving and taking transit.**

Public Outreach Efforts to Date

- Project Webpage
- Public Outreach Meetings
 - WSDOT (bi-weekly meetings)
 - Juanita Neighborhood Association
 - Evergreen Hill Neighborhood Association
 - Transportation Commission
 - EvergreenHealth Medical Center
 - King County Metro and Sound Transit
 - Virtual public open houses (2)



Planned WSDOT and Sound Transit Projects



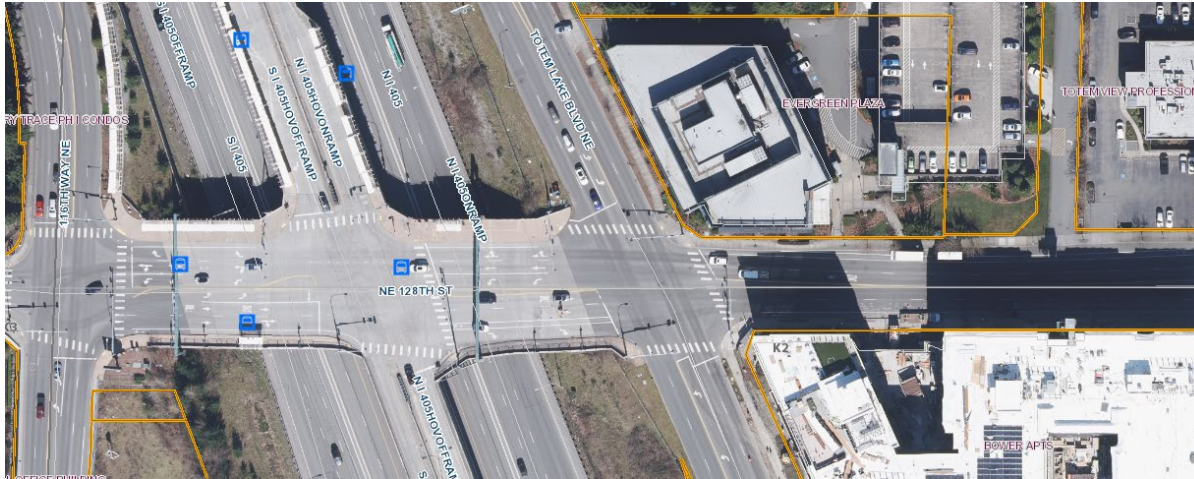
Key Findings: NE 128th Street

- Maintain 4-lanes on NE 128th St between Totem Lake Blvd and 120th Ave NE to maintain I-405 interchange operations and accommodate high volume of buses.
- Provide enhanced bus stops on NE 128th St to reduce bus routes using Totem Lake Transit Center and improve travel times.
- Identified several multimodal safety and mobility improvements.
- Not recommending addition of westbound left turn at NE 128th Street and Totem Lake Blvd intersection.



Westbound Left at NE 128th St & Totem Lake Blvd

- Limited space at northeast corner of intersection and widening for left turn lane would impact property and result in reduced non-motorized facilities.
- Addition of westbound left turn movement would negatively impact traffic operations at intersection and interchange.



Planned Alternatives to Westbound Left Turn

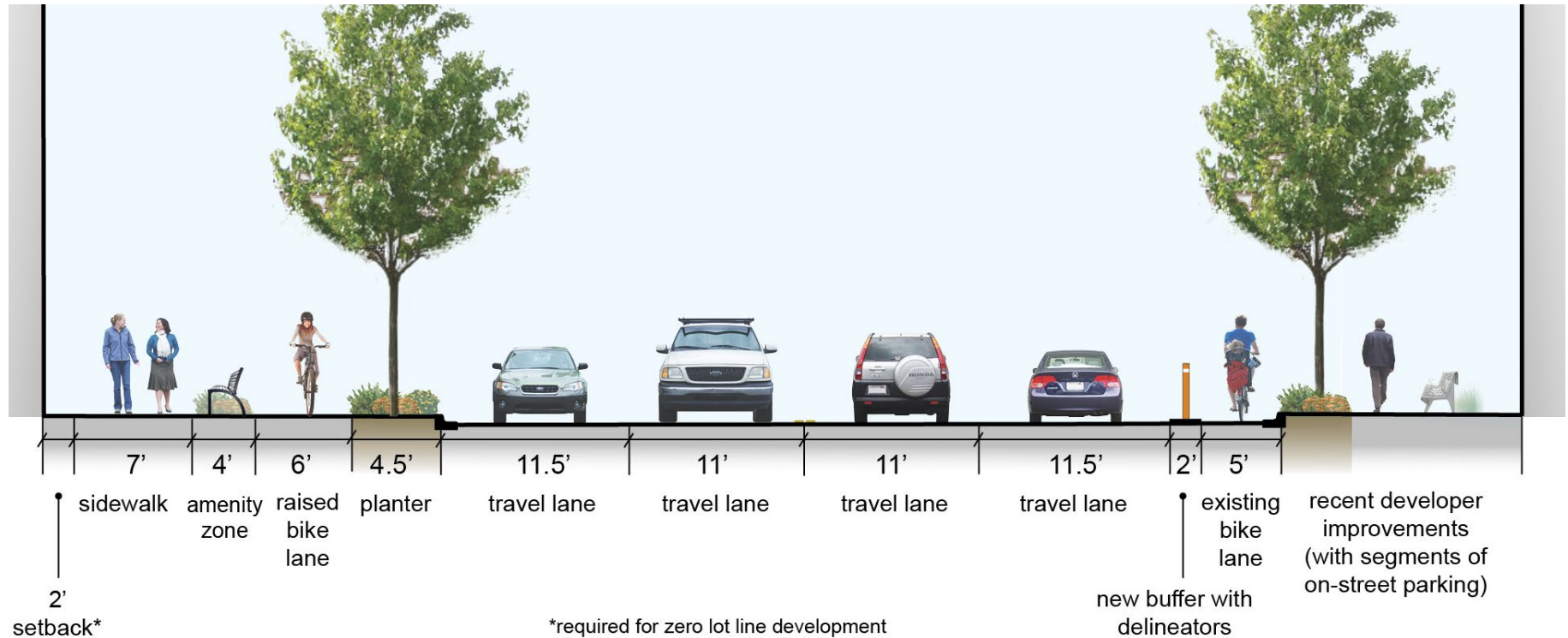
- Future NE 132nd Street and I-405 interchange will provide new connection to I-405 and reduce demand for westbound left turn (opens in 2023).
- Future NE 130th Place street extension will provide alternative route for westbound left turns to southbound Totem Lake Blvd.



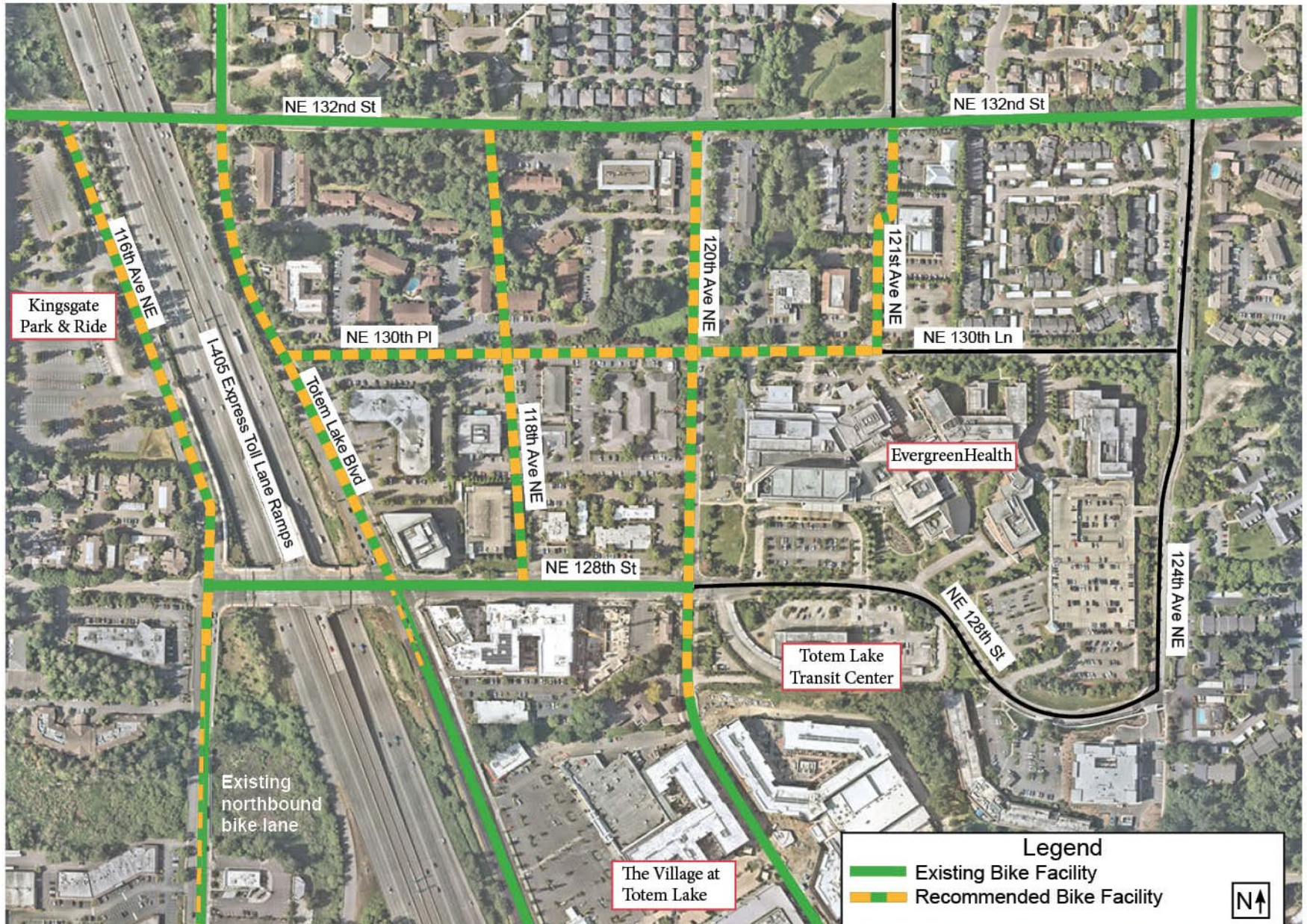
NE 128th St: Totem Lake Blvd and 120th Ave NE

Planned Improvements:

- Implement two enhanced bus stops.
- Install 6' raised bike lanes on the north side of street.
- Add 2' buffer with delineators to existing bike lane on south side of street.



Existing and Recommended Bike Facilities



Discussion and Questions

