

87

Denny Creek

+2 since 2021



Basin Facts

Basin Area
811 acres



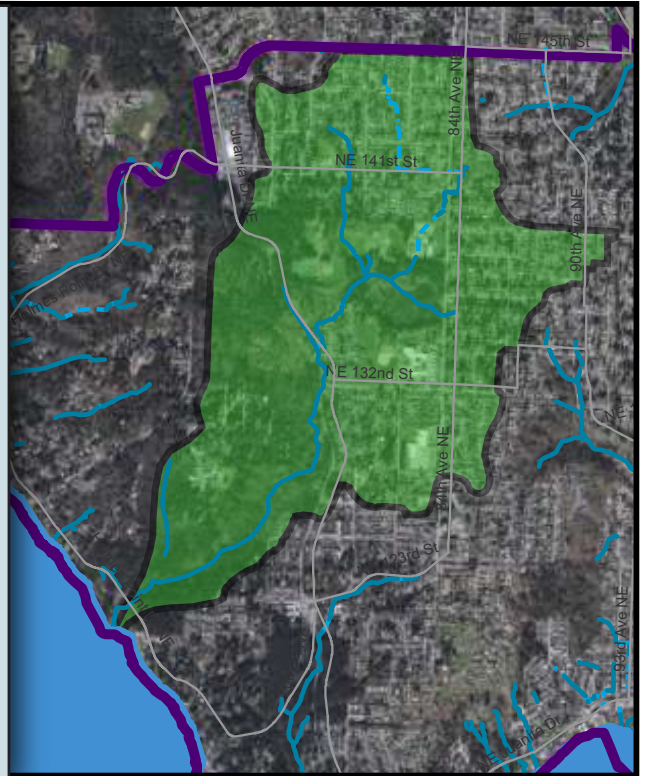
Tree Cover
53%



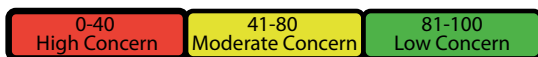
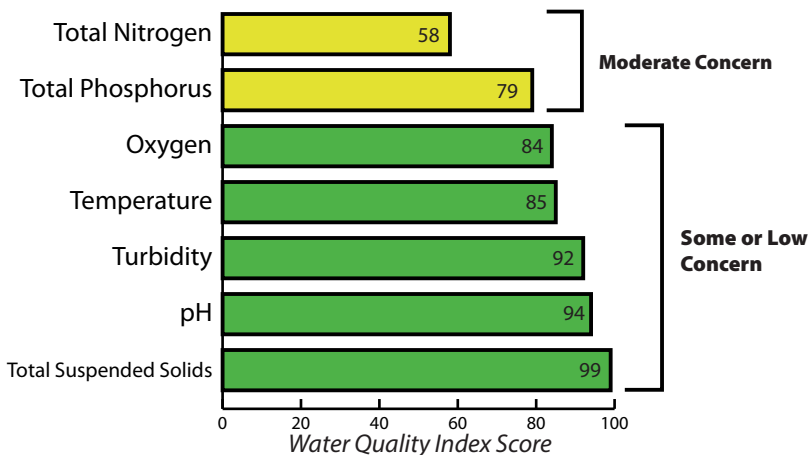
Impervious Area
25%

Water quality: **Some or Low Concern**

High levels of phosphorus and nitrogen are the primary reasons this basin did not score higher.



2022 Water Quality



Stream Bugs

Score (10-50) Long Term Trend



30
Fair



Improving

Habitat conditions: This basin has the 2nd highest forest cover of any basin in Kirkland. This provides quality wildlife habitat and can help decrease the volume of runoff and contaminants entering Denny Creek and Lake Washington. Sockeye, cutthroat trout, juvenile coho, and sculpins have been found in the lower section and mouth of the creek.

Challenges: Development and urbanization of the upper section of Denny Creek has led to erosion in the stream channel.

How to Help Nitrogen and Phosphorus in Denny Creek

- ✓ Scoop and throw away **pet waste** to reduce phosphorus runoff.
- ✓ **Minimize fertilizer use** in your lawn and garden to reduce nitrogen

Monitoring stream bugs tells us about the biological health of a stream. Different bugs are more or less tolerant of water pollution, and their presence or absence can tell us a lot about the quality of the water.

Learn more at www.kirklandwa.gov/CreekHealth