

Cedar Creek Rainwater Management Project

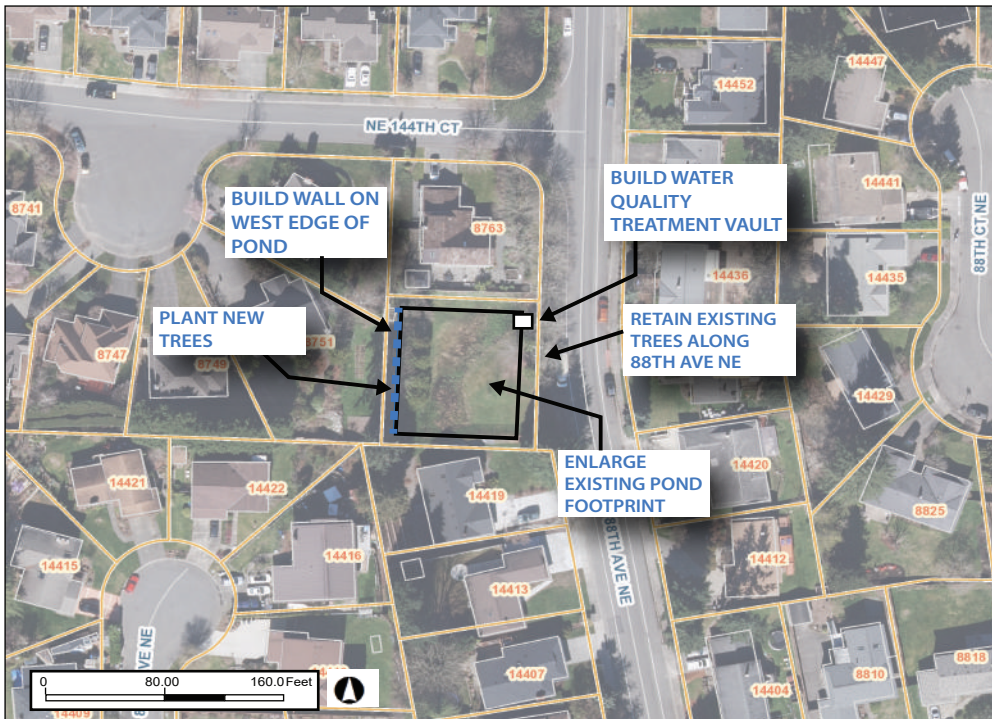


Kirkland Public Works
Storm & Surface Water Division

Site 1: Inglemoor Ridge Pond Retrofit at 88th Ave NE Located north of 14419 88th Ave NE



▲ Proposed site changes, looking west



Description

This project would reconfigure and enlarge the existing stormwater pond and install a water quality treatment vault.

This project would receive rainwater runoff from approximately 5 acres of upstream area.

Project Goals



Lower risk of street and property flooding downstream



Improved water quality for wildlife and recreation

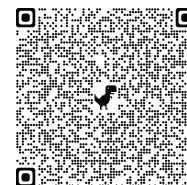


Healthier Juanita Creek

Learn more

Scan the QR code below, or visit:

www.kirklandwa.gov/RainwaterProjects



www.kirklandwa.gov/RainwaterProjects

Project Manager

Jenny Gaus

Phone: (425) 587-3850

Email: jgaus@kirklandwa.gov

Cedar Creek Rainwater Management Project



Kirkland Public Works
Storm & Surface Water Division

Site 1: Inglemoor Ridge Pond Retrofit at 88th Ave NE Located north of 14419 88th Ave NE



Design Elements

- Install water quality treatment vault to filter water before it flows to Cedar Creek.
- Enlarge pond footprint to increase storage capacity.
- Add a retaining wall along the west side of the pond.

Potential Benefits

- Improve water quality in Cedar Creek and Juanita Creek and provide flow control to reduce downstream flooding.
- Could include new vegetative buffer for neighboring properties.
- New retaining wall for property on west

Potential Impacts

- Neighborhood access impacts during construction.
- Noise associated with construction activities.
- Trees inside the enlarged pond footprint would be removed. New trees would be planted along the west buffer.
- Health of street trees will be evaluated and these trees will be retained or replaced

What's Next?

The City will prioritize this project along with other surface water projects, and will seek funding to develop a full design and then to construct the project. This process will likely take 2 to 5 years.

For more information, and to provide input in future phases, contact **Jenny Gaus** at (425) 587-3850 or at jgaus@kirklandwa.gov.

Alternative formats available upon request.
Contact (425) 587-3831 (TTY Relay: 711) or
TitleVICoordinator@kirklandwa.gov



DEPARTMENT OF
ECOLOGY
State of Washington

This project is funded in part by a grant from
the Washington State Department of Ecology