

PAVING PROCESS

(Work days may not be consecutive)



1

CURB REPAIR

Why: ADA compliance

Work days: 10 - 15 (done)



2

LOWERING IRON

Why: Protect utilities

Work days: 3 - 7

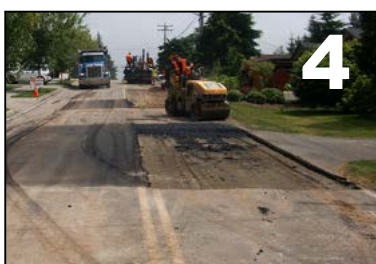


3

GRINDING

Why: Remove degraded surface

Work days: 1 - 5



4

PATCHING

Why: Repair failed sections of road

Work days: 1 - 5



5

OVERLAY

Why: New road surface

Work days: 1 - 5



6

RAISING IRON

Why: Utility access

Work days: 2 - 5



7

STRIPING

Why: Establish travel lanes

Work days: 1 - 2