

June 2020

PROJECT UPDATE



CARING FOR YOUR INFRASTRUCTURE TO KEEP KIRKLAND HEALTHY, SAFE AND VIBRANT

Project to improve fish health begins early July

Culvert installation process requires 23-day closure in July and August.

WHAT: A Kirkland contractor begins progress in early July on the first in a series of ambitious improvements planned for the 100th Avenue Northeast corridor.

Interwest Construction will be replacing the three-decade-old culvert that allows 100th Avenue Northeast to cross Cedar Creek. In its place, the contractor will install a new 10-foot-wide by eight-foot-tall concrete box culvert.

The new fish-passable culvert will provide nearly a mile of upstream habitat for trout, coho and other salmon.

To install the new culvert, Interwest Construction plans to close 100th Avenue Northeast between its intersections with Simonds Road and Northeast 139th Street for 23 consecutive days, starting July 22 and ending Aug. 12. Interwest will return in October to replant vegetation.

In late fall, Kirkland will hire a contractor to implement the

remaining Phase I elements planned for 100th Avenue Northeast, between Northeast 139th and 145th streets. Those include intersection improvements at Northeast 145th Street and Simonds Road, sidewalk-level bicycle lanes and widening 100th Avenue Northeast from two lanes to five.

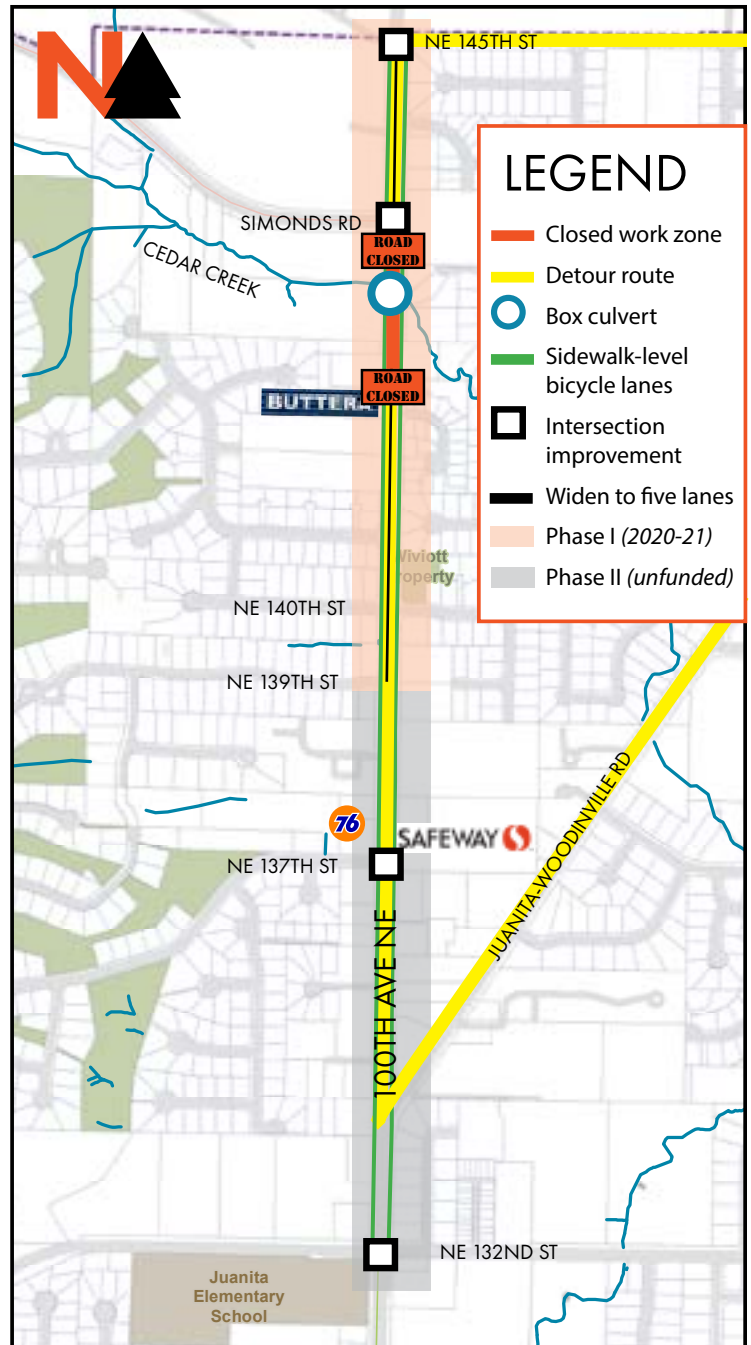
WHEN: Interwest's crews will work from 6 a.m. to 8 p.m., Monday through Friday, starting July 6.

WHAT TO EXPECT: The contractor will establish a detour around the closure.

■ The contractor will ensure access for emergency responders, mail delivery and local residents

VISIT: www.kirklandwa.gov/100thavedesign

CONTACT: Projects Supervisor Aparna Khanal, (425) 587-3827, akhanal@kirklandwa.gov; or Senior Outreach Coordinator Christian Knight, cknight@kirklandwa.gov, (425) 587-3831.



The Cedar Creek culvert replacement is the first in a series of ambitious improvements planned for 100th Avenue Northeast.

People with disabilities may request materials in alternate formats. Kirkland's policy is to fully comply with Title VI of the Civil Rights Act by prohibiting discrimination against any person on the basis of race, color,

national origin or sex in the provision of benefits and services resulting from its programs and activities. Any person who believes his/her Title VI protection has been violated, may file a complaint with the City. To request an alternate format, file a complaint or for questions about Kirkland's Title VI Program, contact the Title VI Coordinator at 425.587.3831 (TTY Relay: 711) or titleviordinator@kirklandwa.gov.



The Simonds Road intersection will feature more turn lanes.

Phase I improves safety, capacity at intersections

Along with the installation of a new box culvert at Cedar Creek, the first phase of 100th Avenue Northeast improvements will widen the north-to-south arterial to five lanes, create sidewalk-level bicycle lanes along both sides and increase both the capacity and safety at a half-dozen intersections.

The City is pursuing funding for the project's second phase, which will focus on 100th Avenue Northeast, between Northeast 132nd and 139th streets.

To see the plan for the entire corridor, visit www.kirklandwa.gov/100thavedesign



City of Kirkland
Public Works Department
123 Fifth Avenue
Kirkland, WA 98033-6189

Cierres de calles

Para solicitar informacion en Español sobre el cierre de calles comuníquese con el Coordinador del Título VI, enviando un mensaje a titlevicoordinator@kirklandwa.gov o al número telefónico (425) 587-3831.

道路封闭

如果需要获取简体中文通告，请联系Title VI协调员。电邮：titlevicoordinator@kirklandwa.gov，电话：(425)587-3831。

Закрытие улиц

Чтобы запросить этот документ на русском языке, пожалуйста, свяжитесь со старшим координатором по связям с общественностью Титул VI по адресу titlevicoordinator@kirklandwa.gov, (425) 587-3831.

Box culverts provide habitat for native fish

The City of Kirkland and its partners are working to connect salmon and native fish with their historic habitat by replacing culverts and other fish barriers with fish-friendly structures, such as bridges or box culverts.

In the past, engineers designed culverts to maximize their water-carrying capacity with the smallest possible pipe size. But many of these culverts prevent fish from accessing their upstream habitat—the water flow is too fast, too shallow, or too steep. This design also led to downstream erosion.

In recent years, Kirkland has replaced aging, sediment-clogged culverts on Cochran Springs (see pictures at right) and Juanita Creek with box culverts.

