



YOU BELONG HERE

Sustainable – Connected – Welcoming

K2044 Comprehensive Plan Update SCE Element and Parks Element Briefing

David Barnes, dbarnes@kirklandwa.gov

Lindsay Levine, llevine@kirklandwa.gov

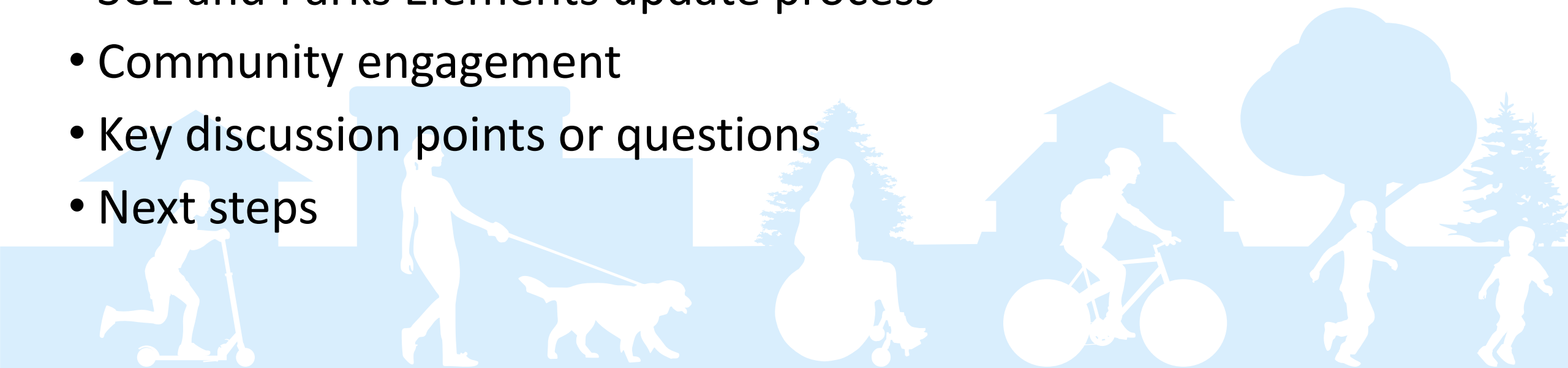
Kaylie Duffy, kduffy@kirklandwa.gov



AGENDA



- Contextualizing comprehensive planning
- K2044 Vision Statement draft
- SCE and Parks Elements update process
- Community engagement
- Key discussion points or questions
- Next steps



KEY THEMES

Advance diversity, equity, inclusivity and belonging (DEIB)

Sustainability

Housing options for all and housing affordability

Mobility connections to regional transit system and accessibility

Resiliency (future emergencies, pandemic response, economic and fiscal planning)

Smart City Initiatives (transportation, mobility, infrastructure, digital transformation, built environment, community/civic engagement)

Consistency with City Council goals

STATE & REGIONAL PLANNING CONCEPTS

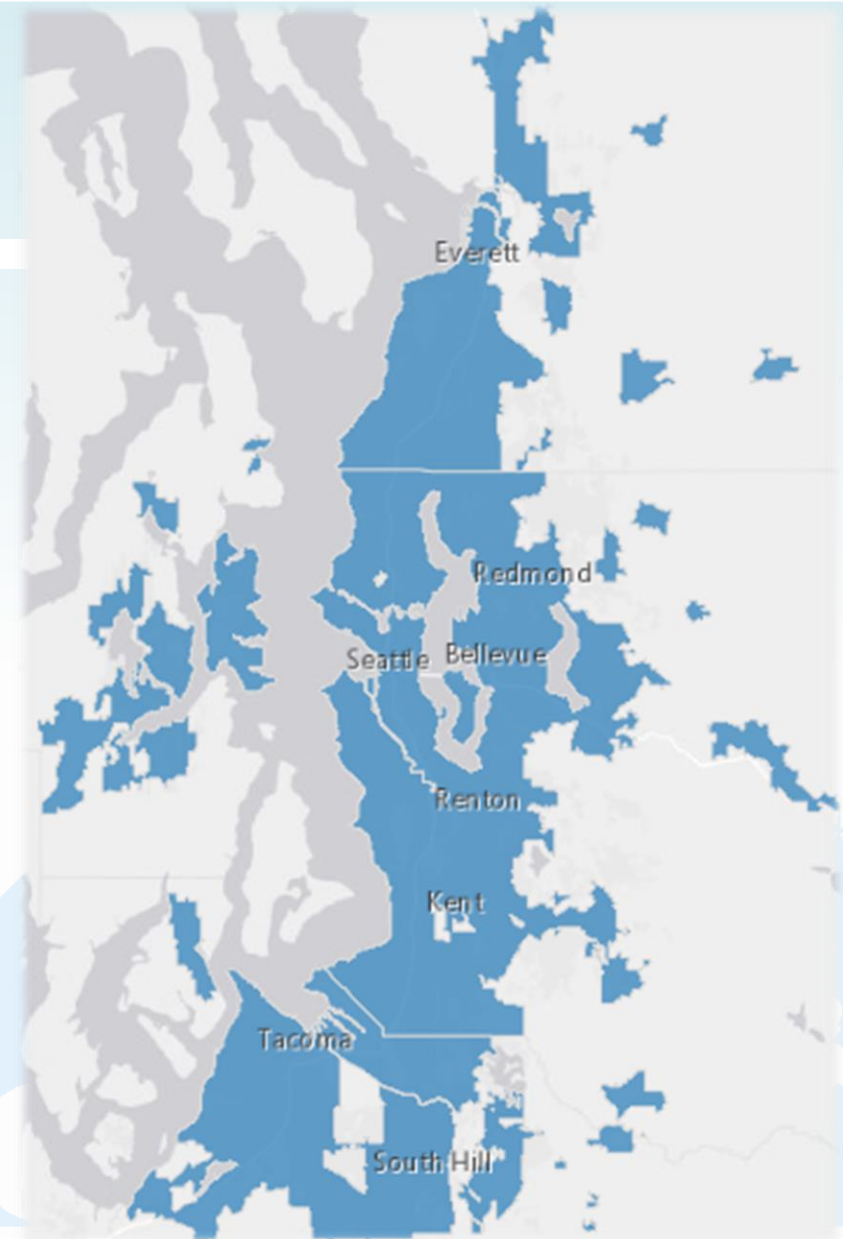
Growth Management Act (GMA)

- Local jurisdictions must prepare comprehensive plans (every 8 years)
- Plans to address growth expected over 20 years
- Plans must address GMA goals
- Regulations (e.g. zoning) must be consistent with plan

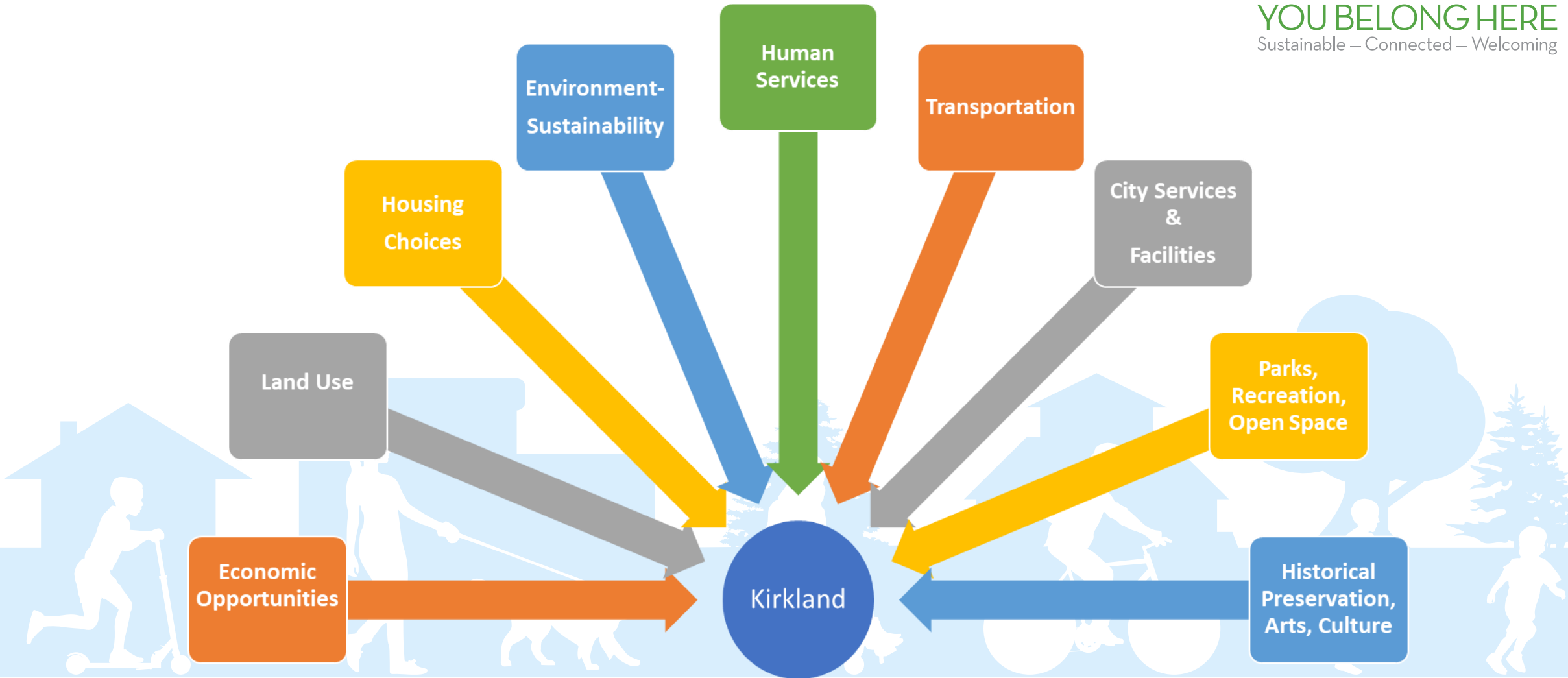
Regional plans (Puget Sound Regional Council & King County)

- Protect rural and resource lands – urban growth line
- Focus growth in urban centers
- Growth targets assigned to each jurisdiction – plans must accommodate targets

GMA and Regional Plans include requirements for local Comprehensive Plans



ELEMENT CHAPTERS



VISION STATEMENT UPDATE



- Purpose
 - Reflect the community's vision, values, and aspirations for how the city should grow and evolve over the next 20 years.
- Community Outreach (December 2022 – January 2023)
 - K2044 Community Survey
 - Virtual Visioning Event
- Resources
 - Comprehensive Plan Equity Review report (2022), prepared by ECONorthwest
 - Puget Sound Regional Council VISION 2050
 - King County's 2021 Countywide Planning Policies
 - Local Land Acknowledgement, adopted by Kirkland City Council (2021)



VISION STATEMENT OUTREACH



What do you love about Kirkland now that you think should persist 20 years into the future?

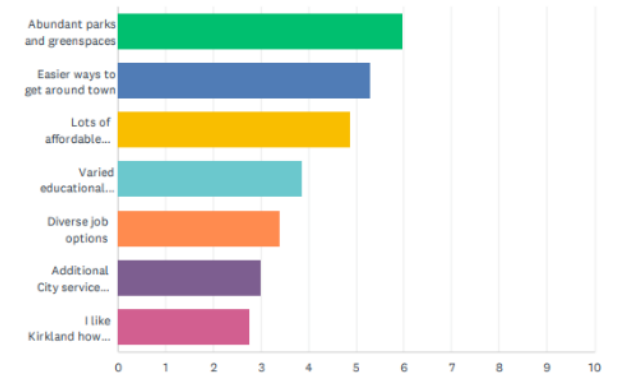


In 20 years, how do you imagine Kirkland will change?



Q8 What does your ideal Kirkland look like in the year 2044? Please rank your top 3 by rearranging rows.

Answered: 146 Skipped: 23



CURRENT VISION STATEMENT



Kirkland is one of the most livable cities in America. We are a vibrant, attractive, green and welcoming place to live, work and play. Civic engagement, innovation and diversity are highly valued. We are respectful, fair and inclusive. We honor our rich heritage while embracing the future. Safe, walkable, bikeable and friendly neighborhoods are connected to each other and to thriving mixed use activity centers, schools, parks and our scenic waterfront. Convenient transit service provides a viable alternative to driving. Diverse and affordable housing is available throughout the city. Kirkland strives to be a model, sustainable city that values preserving and enhancing our natural environment for our enjoyment and future generations.



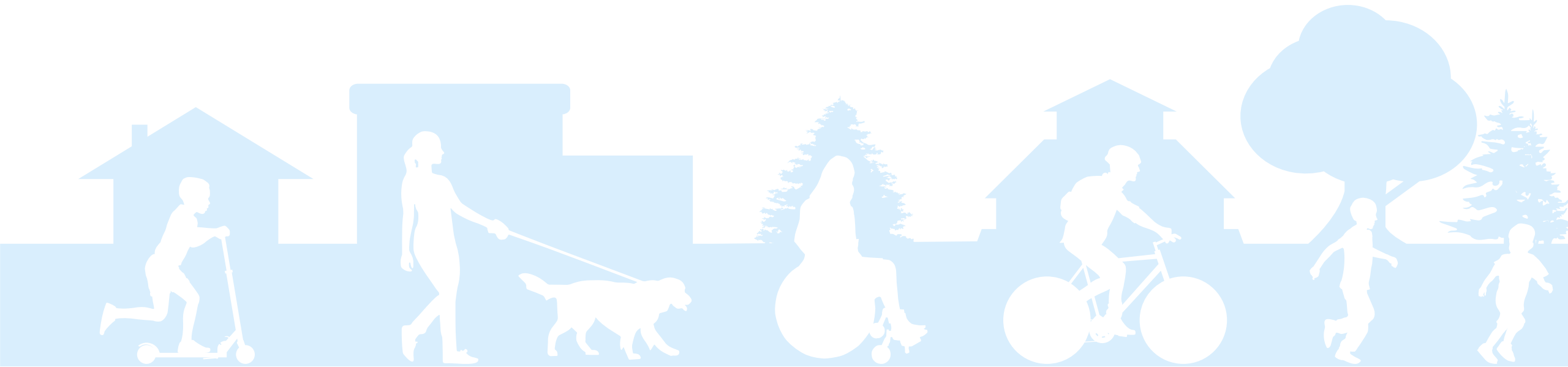
UPDATED VISION STATEMENT



AESTHETICS & PLACE



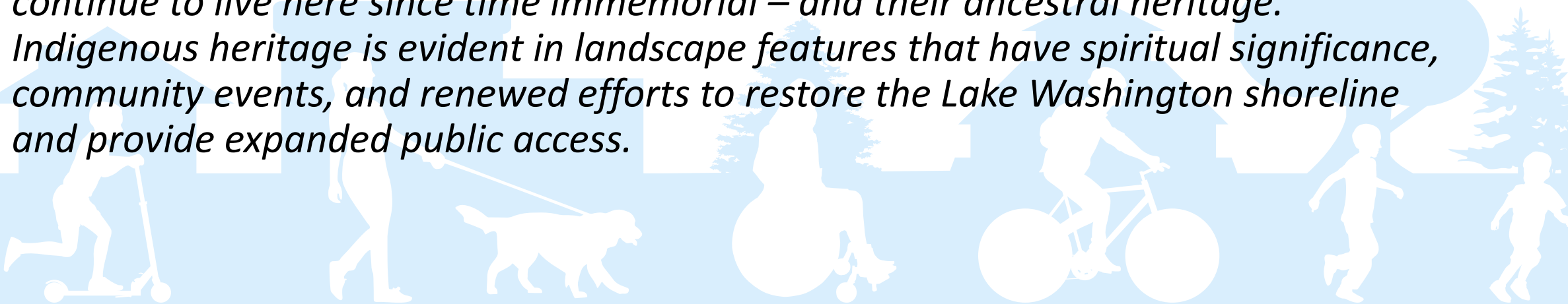
Kirkland is a vibrant, attractive, and welcoming place to live, work, play, and visit. Safe, walkable, bikeable, and friendly neighborhoods are connected to each other and to thriving neighborhood centers, schools, parks, and our scenic waterfront.



DEIB



Civic engagement, equity, and diversity are highly valued. We honor our rich heritage while embracing the future. We are dedicated to celebrating, protecting, and encouraging diversity and inclusion, and we commit to combating systemic, institutional, and interpersonal racism and other forms of discrimination. We honor with gratitude the land itself, the First People – who have reserved treaty rights and continue to live here since time immemorial – and their ancestral heritage. Indigenous heritage is evident in landscape features that have spiritual significance, community events, and renewed efforts to restore the Lake Washington shoreline and provide expanded public access.



ACCESSIBILITY & HOUSING



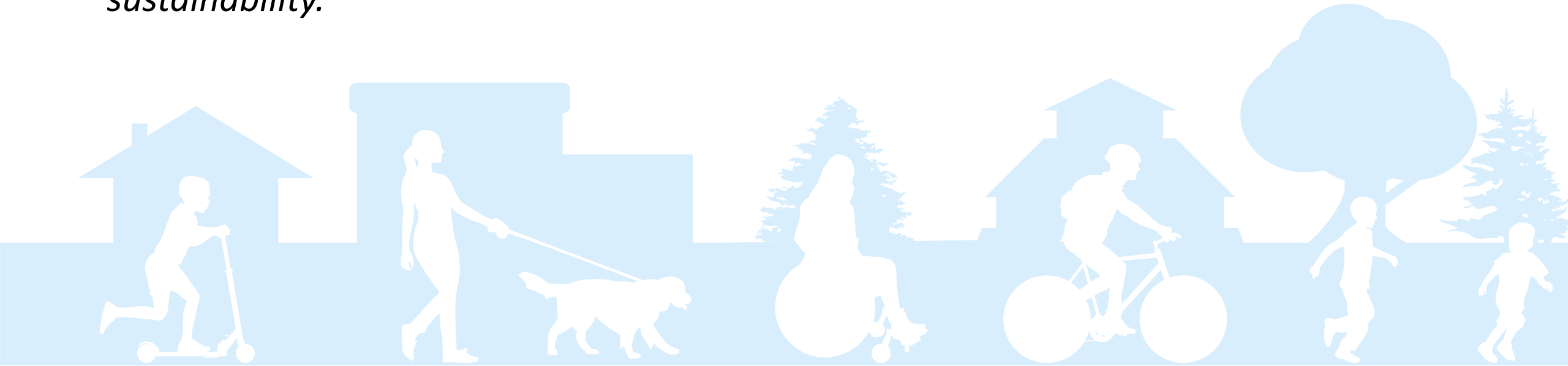
Convenient and dependable local and regional transit services, connected by convenient walk and bike routes, provide viable alternatives to driving. Jobs and housing for all income groups are clustered around transit routes and trails, helping to create a more equitable and walkable community. Neighborhoods have housing of all different shapes and sizes to accommodate marginalized communities and individuals in every stage of life, so that community members never have to leave Kirkland and newcomers are welcome.



GROWTH



The City is innovative and economically resilient, providing public services and capital infrastructure that serve multiple objectives: accommodating growth, providing opportunities for the community to connect and help each other, and promoting sustainability.



SUSTAINABILITY & ENVIRONMENT



The City is filled with green roofs, community gardens, tree-filled streets, daylighted streams and stormwater swales, and connected open spaces that make Kirkland more resilient and livable in the face of climate change. Kirkland is a model, sustainable city that values preserving and enhancing our natural and built environment for our enjoyment and for future generations.



REQUIREMENTS FOR ELEMENTS



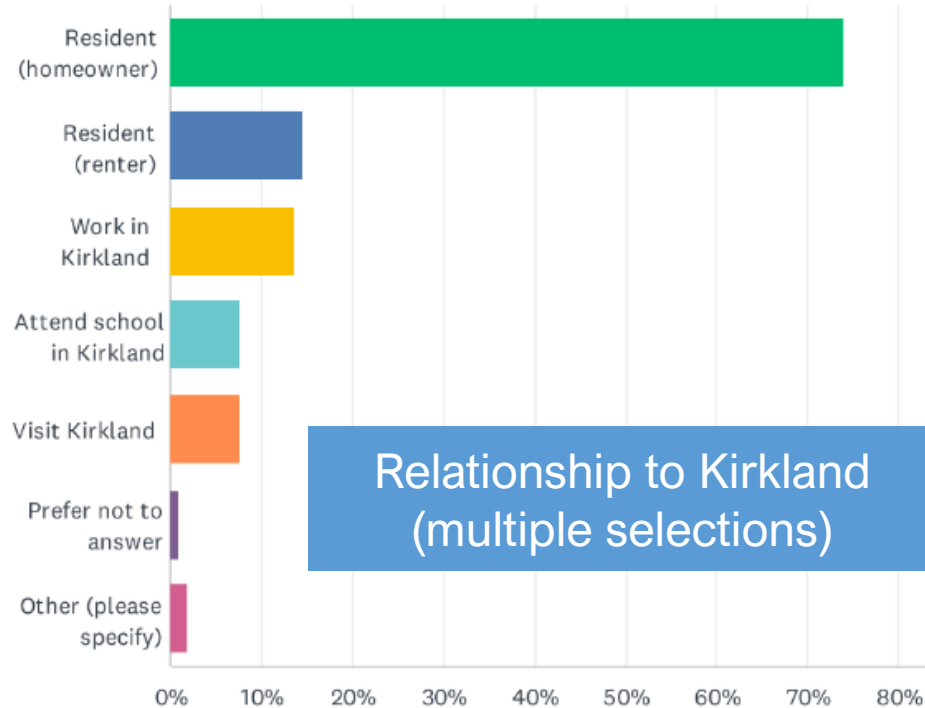
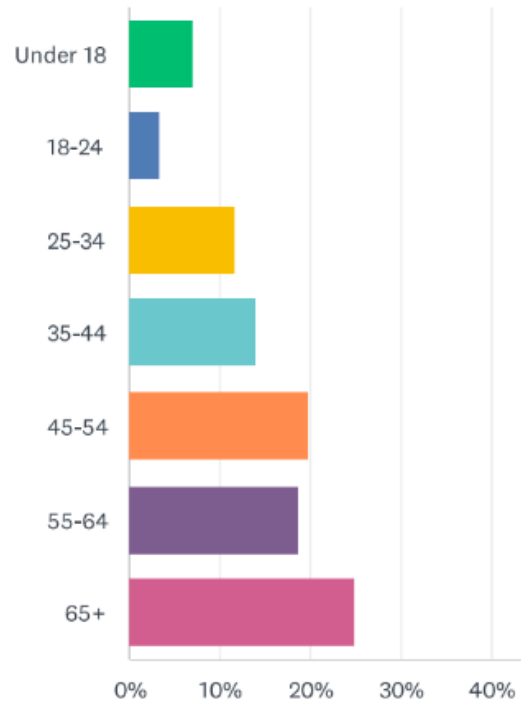
- Consistency with State, Multi-County and King County Countywide Planning Policy
- Alignment with local plans such as Sustainability Master Plan (SMP) and Parks Recreation Open Space (PROS) Plan
- Review and consider key goals and policy language from Kirkland's Diversity, Equity, Inclusion and Belonging Roadmap and ECONorthwest Equity Review



WHO HAVE WE HEARD FROM?



Age distribution



Outreach:

- 316 survey respondents
- Senior Council
- Youth Council
- Focus Groups
- Tabling at community events such as Evergreen Hospital Earth Day Fair

PARKS ELEMENT THEMES



- Improve accessibility to City parks and recreation system
- Equitable distribution of parks and recreation opportunities
- Preserve and enhance the tree canopy
- Plant more trees in parks and rights-of-way
- Incentivize tree planting
- Increase the resiliency of parks in light of climate change



SCE ELEMENT THEMES



- Address climate change impacts
- Address heat and smoke events with an equity lens to increase resilience
- Promote major city programs and how the city can best help the community
- Codes and incentives should be used as solutions
- Focus on equity in policy and access to programs
- Promote electrification of the community
- Provide education on sustainability topics
- Report on progress through annual reports and dashboards



NATURAL GAS USAGE EMISSIONS



Community-wide Carbon Emission Reduction Targets

- 50% by 2030
- 75% by 2040
- 95% by 2050

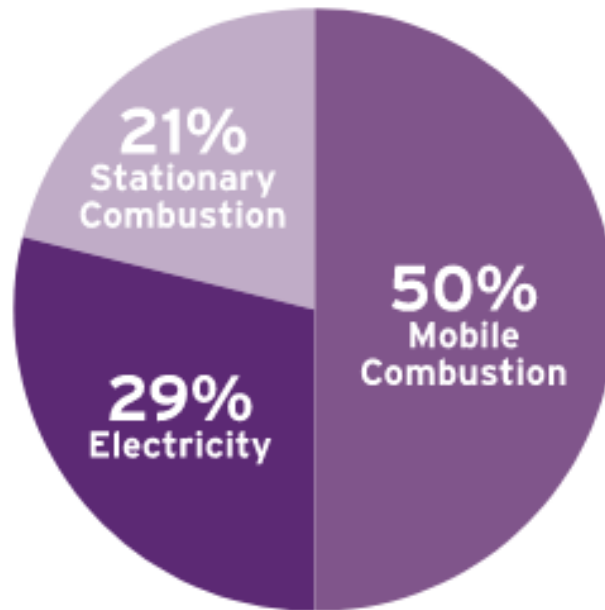


Figure 1. 2017 Kirkland community emissions breakdown by source

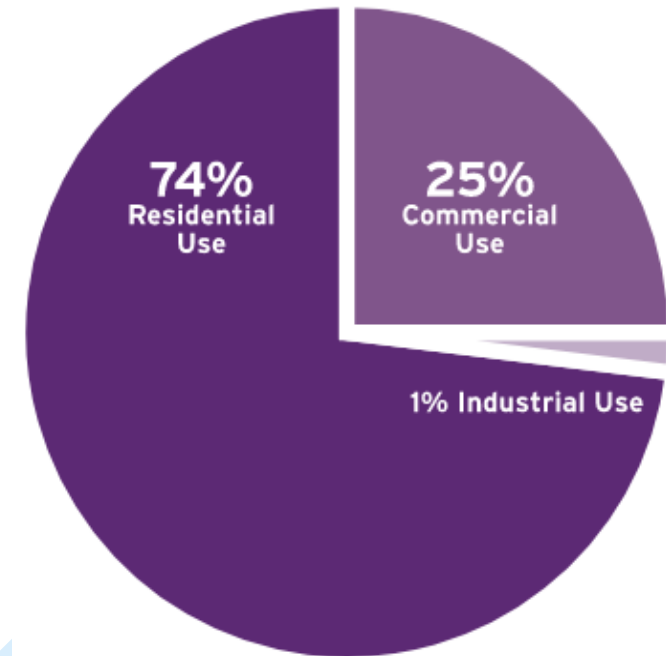


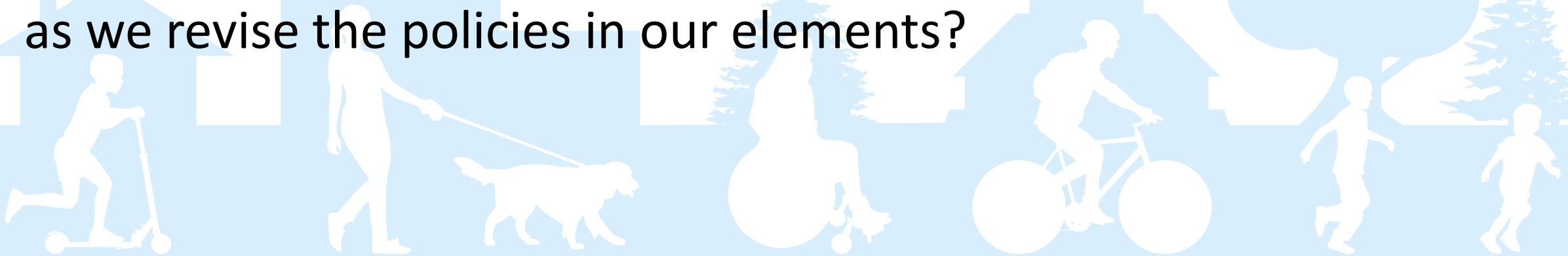
Figure 3. Kirkland pipeline gas usage by user type

Question: Does Planning Commission have an opinion on prohibiting new natural gas hookups, and can it provide direction at this stage of the process?

KEY QUESTIONS FOR DISCUSSION



- Any questions about what staff has learned from the community through engagement to date?
- Any questions about the State, regional, or County requirements for updating the SCE or Parks Elements?
- Are there any major issues or topics that should be considered now as we revise the policies in our elements?



NEXT STEPS

