

**YOU BELONG HERE**

Sustainable – Connected – Welcoming

# **Parks, Recreation, and Open Space Element Policy Briefing**

Planning Commission Study Session

February 8, 2024



# Agenda



- Parks Element Overview
- Community Input Review
- Study Issues
- Draft Goal & Policy Revisions
- Planning Commission Questions & Feedback



# Parks Element Overview



- Used by the Parks & Community Services Department as a guiding document
- Sets overarching goals and policies for the City's parks and recreation system
- Supports accessible and well-maintained parks and recreation facilities
- Promotes conservation and environmental education
- Identifies parks level of service standards



YOU BELONG HERE  
Sustainable. Connected. Welcoming.

# COMMUNITY INPUT

# Parks Element Community Engagement



- Parks & Sustainability, Climate, and Environment (SCE) Survey (316 responses)
- Parks & SCE Focus Groups
- Senior Council Meeting
- Youth Council Meeting
- Park Board Meeting
- General Outreach (tabling, visioning survey, City communications/social media, etc.)

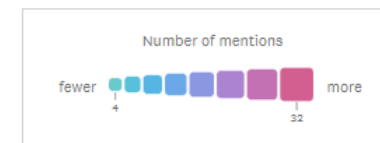




# Community Input - Themes

- Equitable access to parks
- Small-scale parks
- Tree canopy conservation
- Increase tree canopy in parks and along streets
- More shade at parks (trees/structures)
- Have additional uses and businesses/vendors in parks

Word cloud on environmental issues that need attention in Kirkland (Parks & SCE Survey)



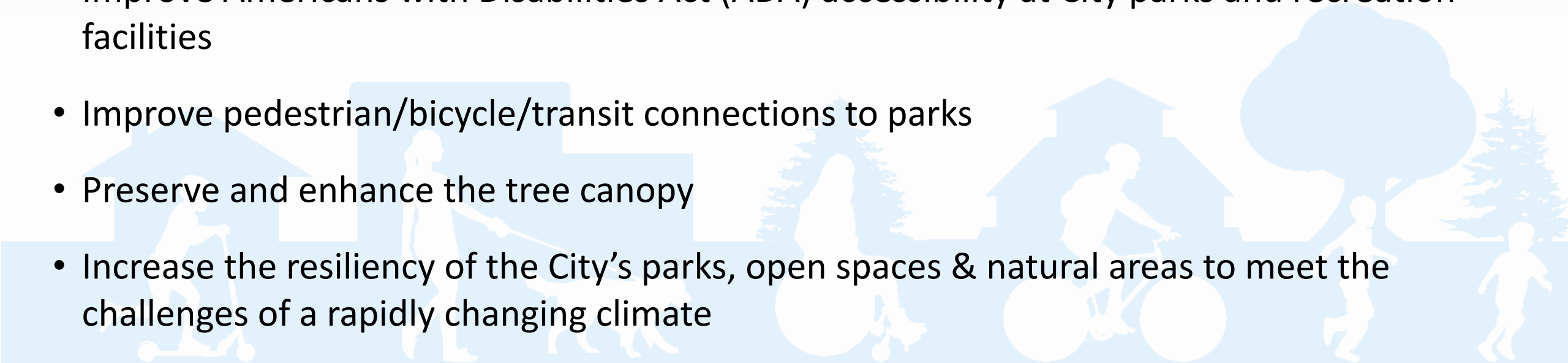


**YOU BELONG HERE**  
Sustainable – Connected – Welcoming

# POLICY BACKGROUND

# Parks Element Study Issues

- Update policies to ensure consistency with the 2022 PROS Plan
- Support equitable distribution of parks and recreation opportunities throughout the City
- Improve Americans with Disabilities Act (ADA) accessibility at City parks and recreation facilities
- Improve pedestrian/bicycle/transit connections to parks
- Preserve and enhance the tree canopy
- Increase the resiliency of the City's parks, open spaces & natural areas to meet the challenges of a rapidly changing climate





# Parks Element: From Goal to Actions

## Comp Plan

### Goal PR-2

Enhance the quality of life in the community by providing services and programs that offer positive opportunities for building healthy, productive lives.

### Policy PR-5.5

Strive to reduce barriers to participation and provide universal access to facilities and programs.

## PROS Plan

### Objective 5.3

Continue to help ensure recreational programs and facilities are affordable for all community members.

#### Action 5.3A

Create a promotional campaign to inform the community of scholarships. Consider an outreach element with the scholarship policy.

#### Action 5.3B

Evaluate the scholarship policy annually to ensure data privacy and a standard for need (poverty level) is appropriately applied in Kirkland.

#### Action 5.3C

Consider a tiered pricing program for selected activities.

#### Action 5.3D

Create a standard for offering a set number or % of free or low-cost programs as budget allows.

# What drives the updates?



- Compliance with required State/regional/county policies
- Incorporating recommendations from Equity Review Report
- Addressing study issues, as directed by the Planning Commission and Council
- Alignment with 2044 Comp Plan Vision, Guiding Principles, and draft revisions to other Elements
- Alignment with the City's PROS Plan, including parks Level of Service Standards (*the updated Element will refer directly to the PROS Plan since there are now multiple types of standards & guidelines*)

# What drives the updates?



## *Suggested areas for Planning Commission focus*

- Compliance with required State/regional/county policies
- Incorporating recommendations from Equity Review Report
- • Addressing study issues, as directed by the Planning Commission and Council
- • Alignment with 2044 Comp Plan Vision, Guiding Principles, and draft revisions to other Elements
- Alignment with the City's PROS Plan, including parks Level of Service Standards (*the updated Element will refer directly to the PROS Plan since there are now multiple types of standards & guidelines*)



**YOU BELONG HERE**  
Sustainable – Connected – Welcoming

# DRAFT GOAL & POLICY AMENDMENTS

# Questions for Planning Commission



1. Do Commissioners have any questions or feedback about any specific draft revisions to Parks Element goals or policies?
2. Are there any policy themes or concepts that you believe need to be incorporated into the draft policies?





# Draft Parks Goals & Policies



**Goal PR-1:** Acquire, develop, and renovate a system of parks, recreation facilities, and open spaces that is attractive, safe, functional, sustainable, and accessible to all segments of the population.

**New. Policy PR-#:** Identify innovative methods to provide publicly accessible urban parks and related amenities such as linear parks, playgrounds, plazas, or exercise stations in Kirkland's Urban Growth Centers.



# Draft Parks Goals & Policies



**Goal PR-1:** Acquire, develop, and renovate a system of parks, recreation facilities, and open spaces that is attractive, safe, functional, sustainable, and accessible to all segments of the population.

**New. Policy PR-#:** Further activate City parks, spur economic development, and foster ten-minute neighborhoods by exploring opportunities for new uses in City parks and recreation spaces as appropriate.



# Draft Parks Goals & Policies



**Goal PR-1:** Acquire, develop, and renovate a system of parks, recreation facilities, and open spaces that is attractive, safe, functional, sustainable, and accessible to all segments of the population.

**New. Policy PR-#:** Support and improve access to parks and recreation facilities, especially walking, biking, and public transportation.



# Draft Parks Goals & Policies



**Goal PR-3:** Protect, preserve, and restore ~~publicly owned~~ the natural environment for future generations resource areas.

**New. Policy PR-#:** Protect and enhance Kirkland's tree canopy to provide wildlife habitat, support community resilience, mitigate urban heat, provide shade, manage stormwater, conserve energy, improve mental and physical health, and support sustainability goals. Prioritize historically underserved communities.



# Next Steps



- Continue to refine revisions to the Parks Element
- Planning Commission Hearings – tentatively April and May
- Final adoption by City Council by the end of 2024

