

# YOU BELONG HERE

Sustainable – Connected – Welcoming

## K2044 Comprehensive Plan Update SCE Element and Parks Element Briefing

David Barnes, [dbarnes@kirklandwa.gov](mailto:dbarnes@kirklandwa.gov)

Lindsay Levine, [llevine@kirklandwa.gov](mailto:llevine@kirklandwa.gov)



# AGENDA



- Comprehensive Plan background
- Community engagement
- Sustainability, Climate, and Environment (SCE) Element update
- Parks, Recreation, and Open Space (Parks) Element update
- Next steps
- Questions



# STATE & REGIONAL PLANNING CONCEPTS

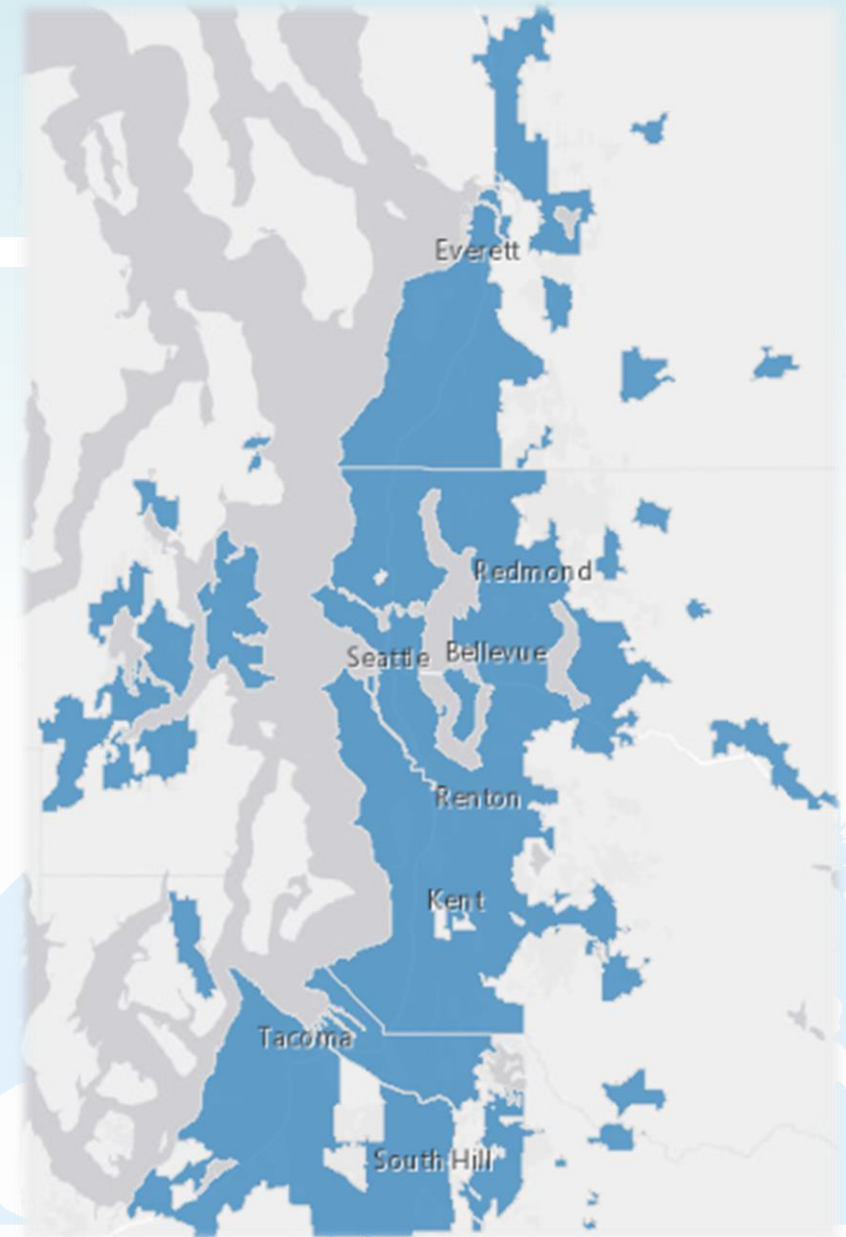
## **Growth Management Act (GMA)**

- Local jurisdictions must prepare comprehensive plans (every 8 years)
- Plans to address growth expected over 20 years
- Plans must address GMA goals
- Regulations (e.g. zoning) must be consistent with plan

## **Regional plans (Puget Sound Regional Council & King County)**

- Protect rural and resource lands – urban growth line
- Focus growth in urban centers
- Growth targets assigned to each jurisdiction – plans must accommodate targets

***GMA and Regional Plans include requirements for local Comprehensive Plans***



# KEY THEMES

Advance diversity, equity, inclusivity and belonging (DEIB)

Sustainability

Housing options for all and housing affordability

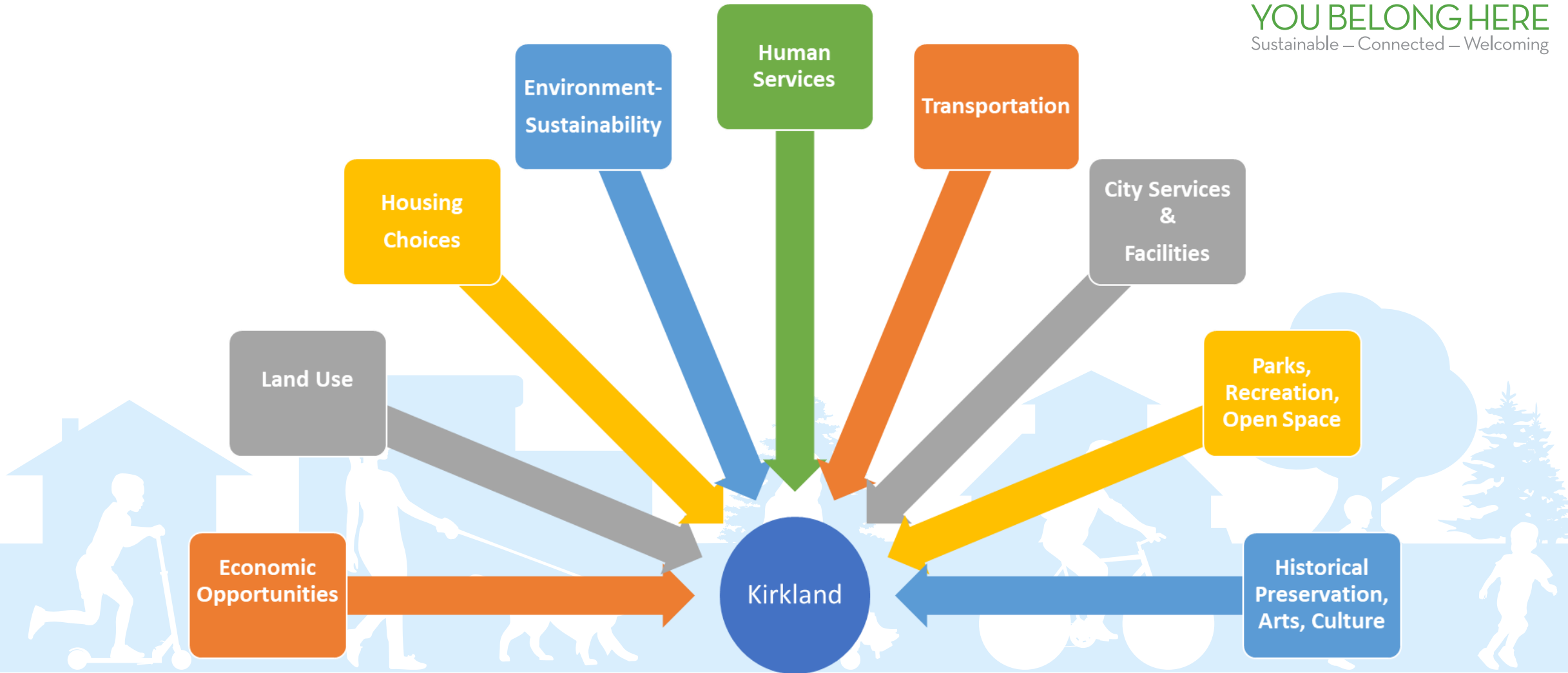
Mobility connections to regional transit system and accessibility

Resiliency (future emergencies, pandemic response, economic and fiscal planning)

Smart City Initiatives (transportation, mobility, infrastructure, digital transformation, built environment, community/civic engagement)

Consistency with City Council goals

# ELEMENTS



# POLICY GUIDANCE



- Consistency with State, PSRC, and King County Countywide Planning Policies
- Alignment with local plans such as Sustainability Master Plan (SMP) and Parks Recreation Open Space (PROS) Plan
- Review and consider key goals and policy language from Kirkland's Diversity, Equity, Inclusion and Belonging (DEIB) Roadmap and ECONorthwest Equity Review



# SCHEDULE



**Public comment, feedback, surveys, community events, community meetings, focus groups**

**- To guide updates -**

**JANUARY-SEPTEMBER 2023**

**Analyze comments, feedback, data, existing policies, regional requirements, growth projections**

**- To draft policies for public review and approval -**

**ONGOING - SUMMER 2024**

**Public Hearing, Planning Commission, City Council**

**FALL 2024**

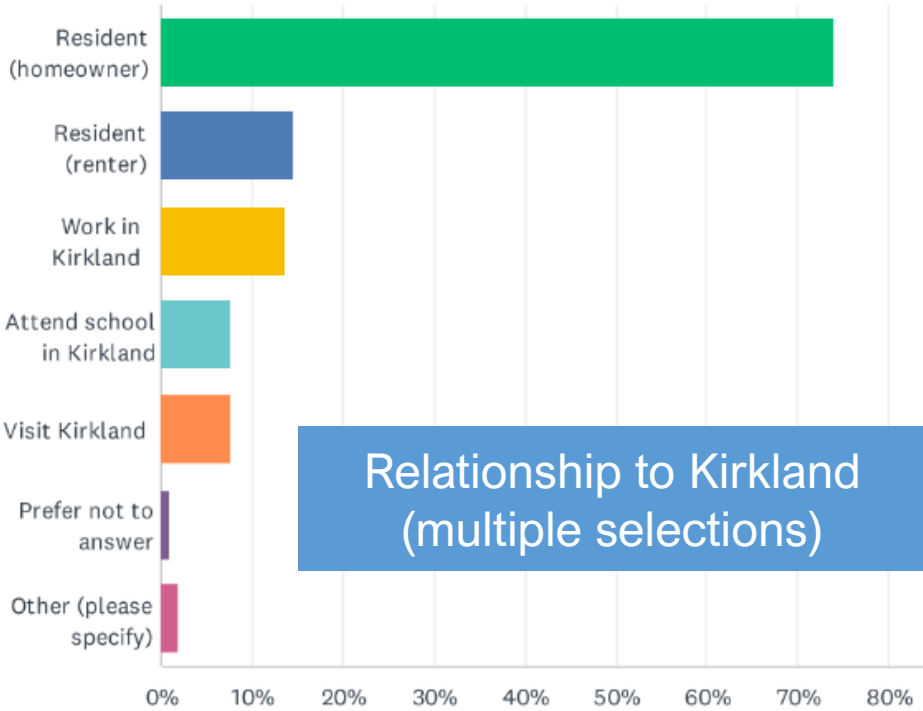
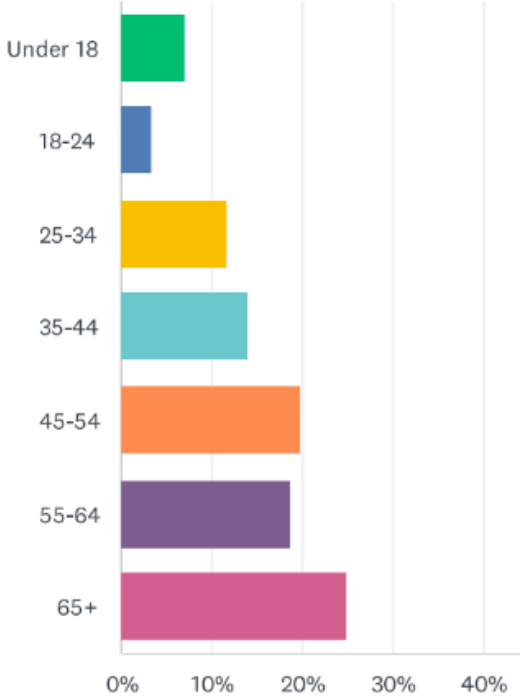




# WHO HAVE WE HEARD FROM?



Age distribution



## Outreach:

- 316 SCE/Parks survey respondents
- Senior Council
- Youth Council
- Focus Groups
- Tabling at community events such as Evergreen Hospital Earth Day Fair



# SCE ELEMENT – How is it used?



- Policies strengthen work related to sustainability, climate and the environment, such as carbon reduction targets
- Provides back up for innovation in relation to other elements, such as the Parks Element, but brings in other elements too
- Provides policy direction for functional plans such as Sustainability Master Plan (SMP)
- Encourages staff to work together with intersecting elements



# SCE ELEMENT – PUBLIC FEEDBACK

- Address climate change impacts
- Address heat and smoke events with an equity lens to increase resilience
- Promote major city programs and how the city can best help the community
- Codes and incentives should be used as solutions
- Focus on equity in policy and access to programs
- Promote electrification of the community
- Provide education on sustainability topics
- Report on progress through annual reports and dashboards



# SCE ELEMENT STUDY ISSUES



- Analyze impacts on the electrical grid of policies moving the entire community towards electrification and elimination of the use of fossil fuels in homes, businesses and vehicles including public transit (electric buses);
- Encourage more intense water conservation measures that reduce the impact on our potable water supply and transitioning to black, grey and reclaimed water supplies for non – drinking water uses;
- Update policies for installing charging stations for electric vehicles at public facilities, parks, public rights-of-way (adjacent to sidewalks), along major transportation corridors, and near freeway entrances/exits;
- Update climate policies that promote mitigating impacts related to climate change (for example: higher temperatures and more heat days and wildfire smoke days) – required by current legislation;
- Update climate policies that make the community more resilient to climate change – required by current legislation.
- Incorporate sustainability and environment requirements from NE 85th Station Area Plan city-wide (min. thresholds for high performance buildings)
- Add preserve and enhance tree canopy and other open spaces to reduce carbon emissions into Parks Element

# PARKS ELEMENT – How is it used?

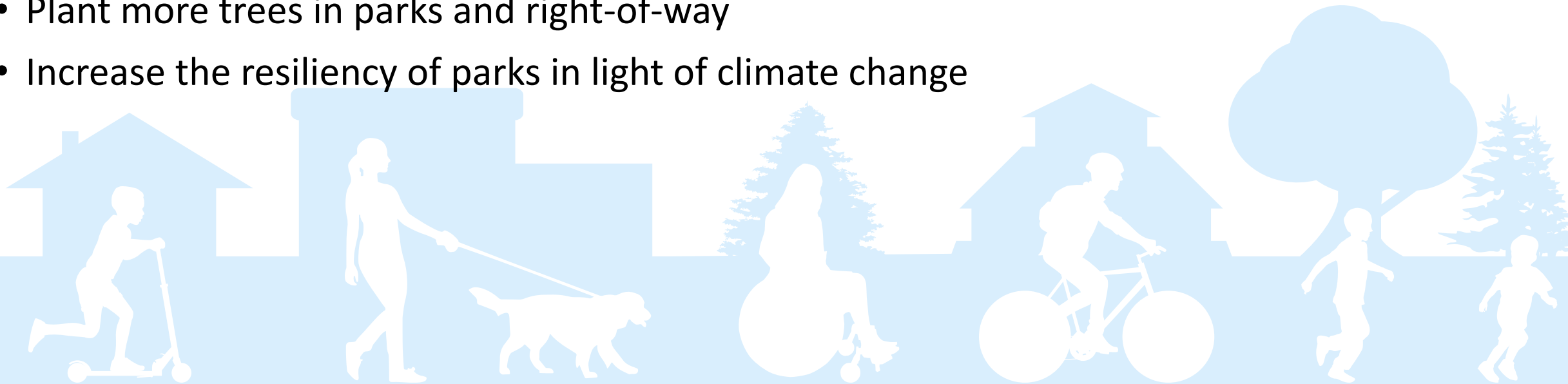


- Used by PCS as a guiding document
- Contains high-level goals and policies
- Overlap with PROS Plan, but less detailed and does not focus on implementation
  - Will include updates to be consistent with 2022 PROS Plan
- Establishes policies for coordination of level of service requirements for City's parks, recreation, and open space system, set forth in the Capital Facilities Element



# PARKS ELEMENT – PUBLIC FEEDBACK

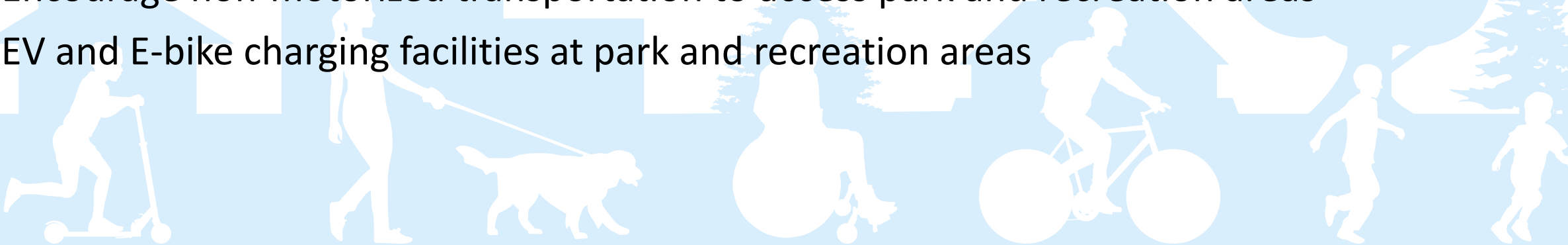
- Improve accessibility to City parks and recreation system
- Equitable distribution of parks and recreation opportunities
- Preserve and enhance the tree canopy
- Plant more trees in parks and right-of-way
- Increase the resiliency of parks in light of climate change



# INTERSECTION OF PARKS & SCE



- Preserving and increasing the tree canopy
- Increasing shade/mitigating heat islands at parks and throughout the city
- Planting native, heat-resistant, resilient species city-wide
- Preserving and increasing City's natural areas and open spaces, access to Lake Washington
- Water Conservation measures with intent of using potable water for drinking
- Encourage non-motorized transportation to access park and recreation areas
- EV and E-bike charging facilities at park and recreation areas



# NEXT STEPS



- Staff will draft updated goals and policies
- Planning Commission Hearing and City Council adoption in 2024
- Continuously seeking input:
  - [Comment form](#) on K2044 website or email [2044ComprehensivePlan@kirklandwa.gov](mailto:2044ComprehensivePlan@kirklandwa.gov)
  - Submit written comments to Planning Commission or provide public testimony at hearing
  - Submit written comments to City Council or provide commentary at relevant meetings





# DISCUSSION



Does the board have any comments or feedback?

