



**YOU BELONG HERE**

Sustainable – Connected – Welcoming

# Comprehensive Plan - Human Services Element

**Human Services Commission Policy Briefing**

April 23, 2024

Lindsay Levine, AICP, Senior Planner



# Agenda



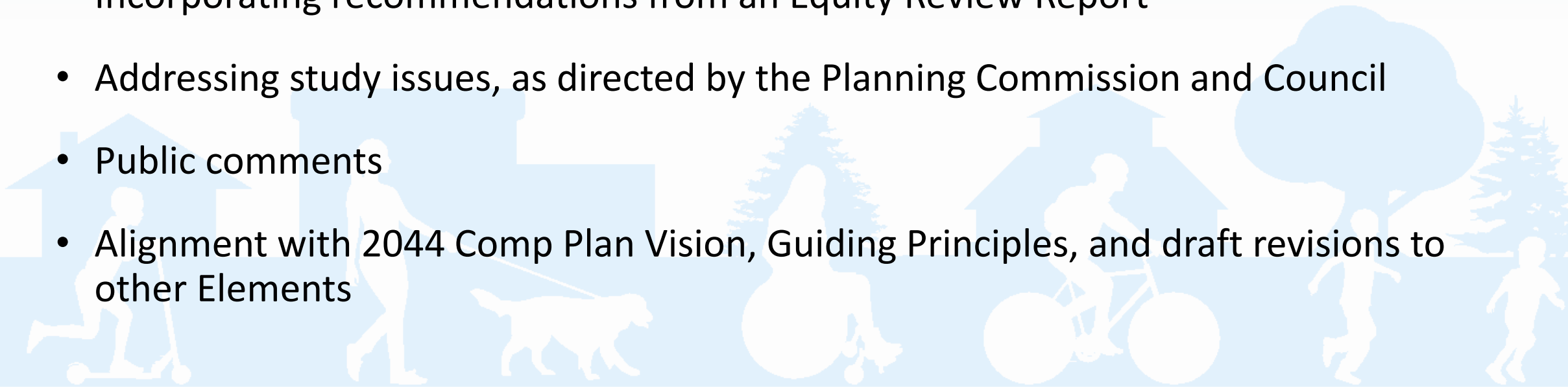
- Comp Plan Background
- Human Services Element
- Community Engagement
- Study Issues
- Next Steps
- Policy Discussion



# What drives the updates?



- Coordination with City staff
- Compliance with required State/regional/county policies
- Incorporating recommendations from an Equity Review Report
- Addressing study issues, as directed by the Planning Commission and Council
- Public comments
- Alignment with 2044 Comp Plan Vision, Guiding Principles, and draft revisions to other Elements



# Example: From Comp Plan to Actions

## Comp Plan

### Goal PR-2

Enhance the quality of life in the community by providing services and programs that offer positive opportunities for building healthy, productive lives.

### Policy PR-5.5

Strive to reduce barriers to participation and provide universal access to facilities and programs.

## PROS Plan

### Objective 5.3

Continue to help ensure recreational programs and facilities are affordable for all community members.

### Action 5.3A

Create a promotional campaign to inform the community of scholarships. Consider an outreach element with the scholarship policy.

### Action 5.3B

Evaluate the scholarship policy annually to ensure data privacy and a standard for need (poverty level) is appropriately applied in Kirkland.

### Action 5.3C

Consider a tiered pricing program for selected activities.

### Action 5.3D

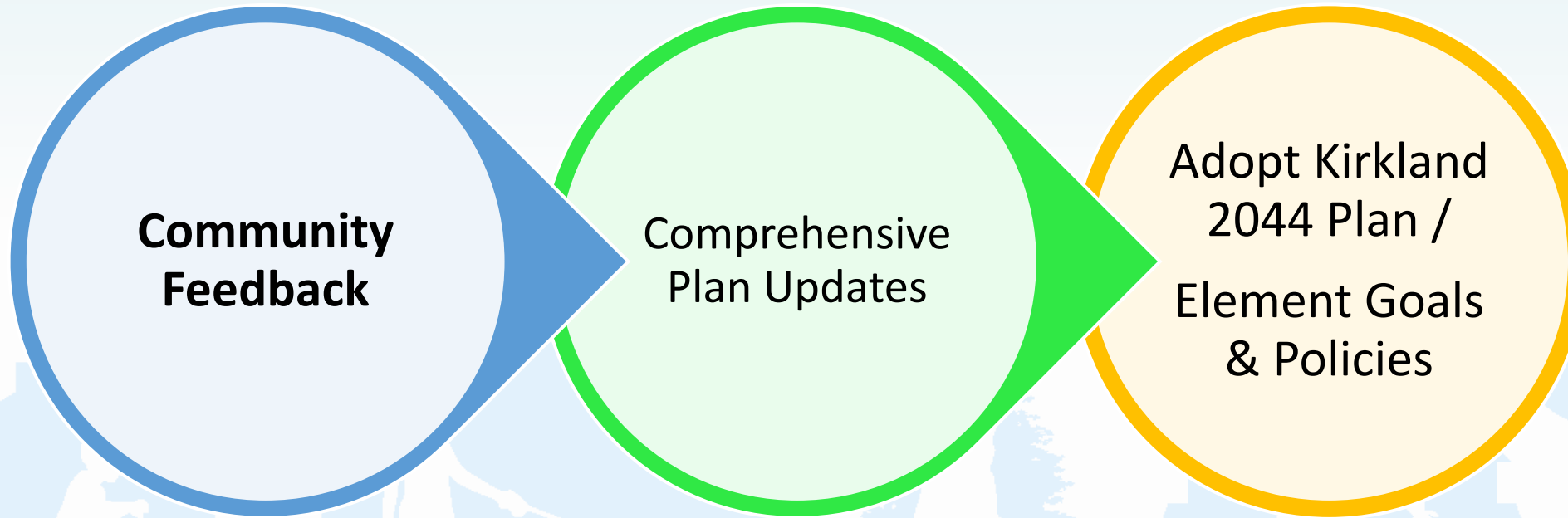
Create a standard for offering a set number or % of free or low-cost programs as budget allows.

# Where are we in the process?



2022 - 2023

2024



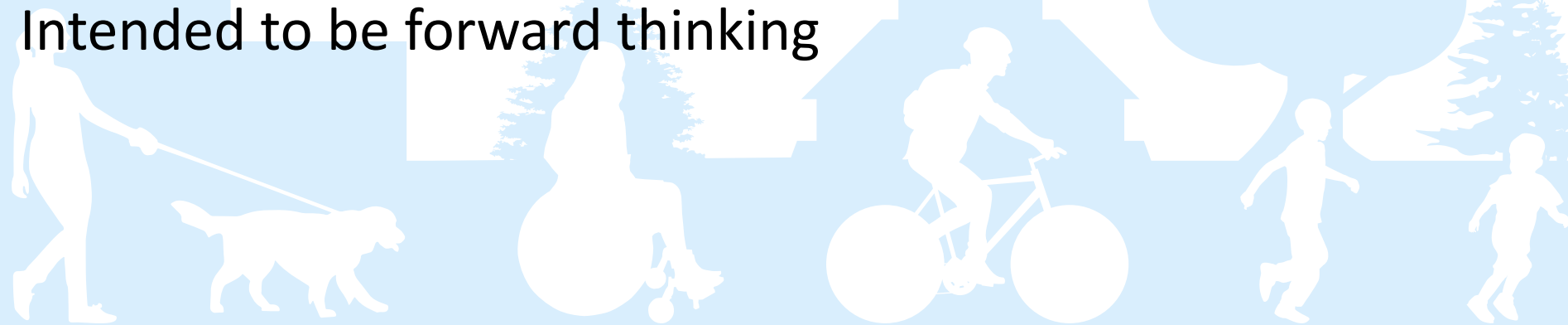
Outreach & Engagement continues throughout process

# Human Services Element



Goals and policies:

- Support the provision of services that assist the economic, social and quality of life needs of community members, including those who are under resourced
- Support accessibility of human services
- Intended to be forward thinking



# Community Engagement Goals

## INVOLVE PRIORITY POPULATIONS

Black, Indigenous, and People of Color (BIPOC)

People who identify as lesbian, gay, bisexual, transgender, queer, intersex, asexual plus (LGBTQIA+)

Seniors

Low-income households

People experiencing homelessness

Youth

Renters

People with disabilities or accessibility challenges

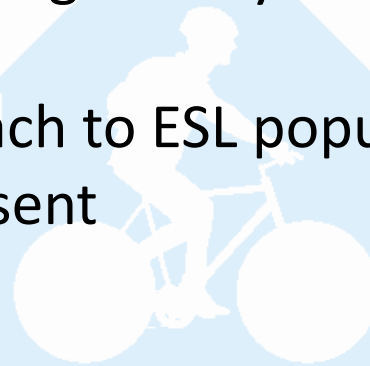
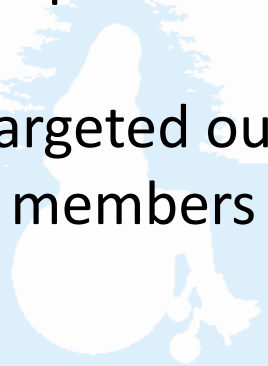
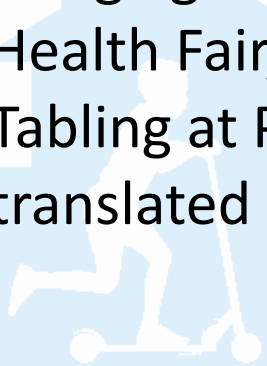
Immigrant communities and people facing language barriers





# Community Engagement

- Housing & Human Services focus group
- Housing & Human Services survey
- Presentations/discussions with boards and commissions (Human Services Commission, Senior Council, Youth Council)
- Presentation/discussion with Kirkland Alliance of Neighborhoods (KAN)
- Tabling at community events (Eastside Honoring Juneteenth, Totem Lake Connector Bridge grand opening, re-opening of 132<sup>nd</sup> Square Park, King County Promotores Network Health Fair, etc.)
- Tabling at Peter Kirk Community Center – targeted outreach to ESL populations with translated materials and bilingual City staff members present





# Focus Group & Survey Comments



- Support for low-income renters
- Need for more affordable housing options
- Address behavioral and mental health
- Support for people experiencing homelessness
- Support for the elderly to be able to continue living in Kirkland
- Encourage development of affordable housing that has services or amenities like grocery stores on-site
- More programs that address food access
- Spread awareness about programs and services
- Lack of public transportation is an issue to access services

# Survey Comments: Unhoused Respondents

- 15 respondents experiencing homelessness
- 60% female
- Barriers in renting: lack of affordable options and inability to meet credit/income requirements
- 66% report their housing need as a studio or 1 BR
- Support permanent supportive housing, tiny homes, cottages



# Human Services Study Issues



- Support affordable housing
- Support more housing options for seniors
- Move existing city-wide DEIB-related policies to another element
- Recognize the evolving nature of the provision of services to address mental health issues, addiction, and homelessness across federal, state, and regional agencies and other organization. Describe how the City could step in to fund or fill gaps.
- Update to include new agencies/programs/facilities/etc.

# Human Services Study Issues



- Improve awareness of available services and resources
- Seek reasonable and fair allocation of King County tax dollars (Veterans and Human Services Levy) to City of Kirkland to support initiatives such as Health through Housing, King County Regional Housing Authority, Regional Crisis Response Agency, homeless outreach, and other services the City provides



# New Human Services and Related Programs/ Resources



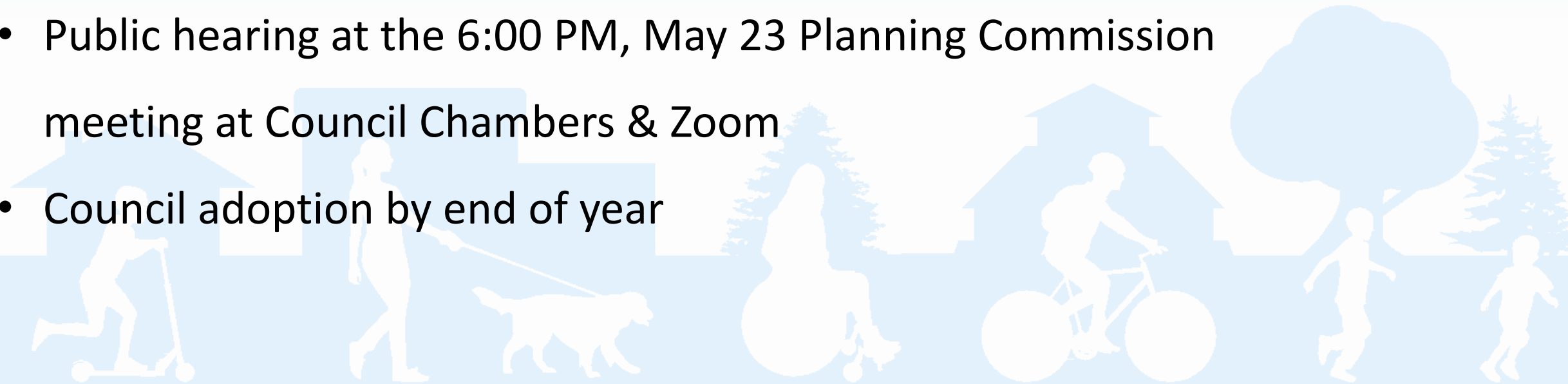
- King County Health Through Housing Initiative – permanent supportive housing at La Quinta site
- Regional Crisis Response (RCR) Agency
- Kirkland Homelessness Assistance and Response (HART) Team
- Kirkland Mobile Integrated Health (MIH)



# Next Steps



- Refinements to goals & policies
- Open house 4:00-5:30PM, May 23 at Council Chambers
- Public hearing at the 6:00 PM, May 23 Planning Commission meeting at Council Chambers & Zoom
- Council adoption by end of year



# Discussion



**Question #1:** Do Commissioners have any questions or feedback about any specific draft proposed revisions to Human Services Element goals or policies?

**Question #2:** Are there any policy themes or concepts that should be incorporated into the draft policies?





# Thank you

