



YOU BELONG HERE

Sustainable – Connected – Welcoming

Human Services Element

Planning Commission Policy Briefing

March 28, 2024

Lindsay Levine, AICP, Senior Planner

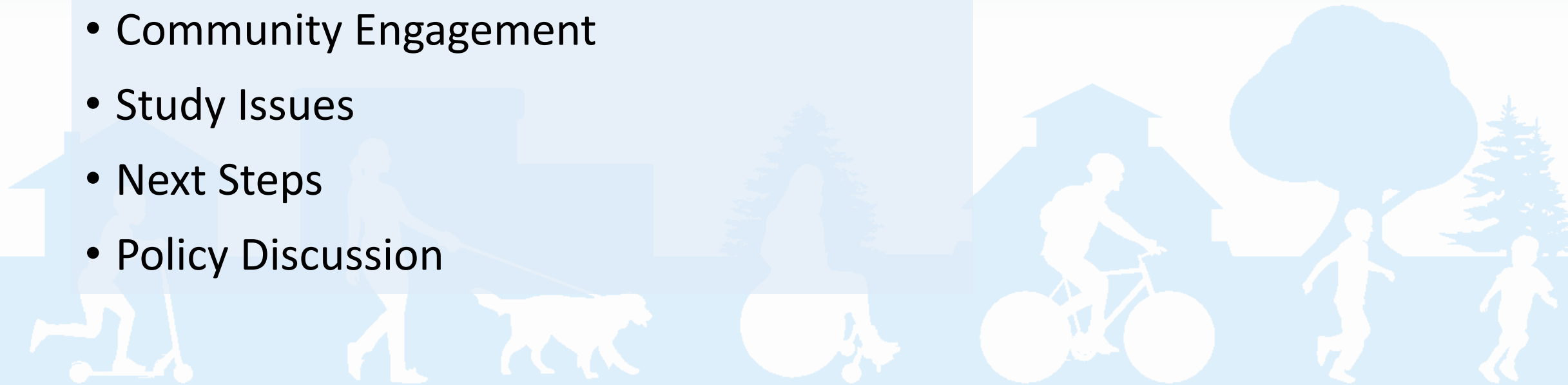


Community Engagement Goals

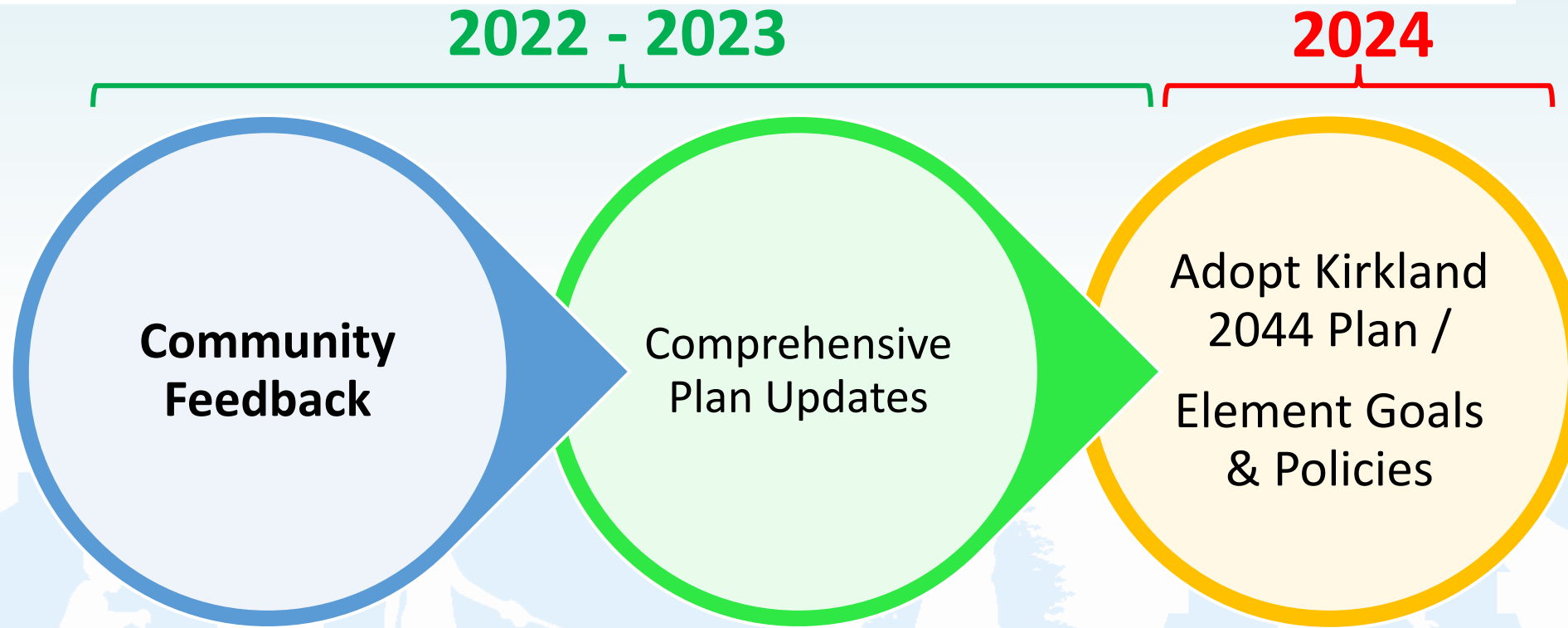


AGENDA

- Background
- Human Services Element
- Community Engagement
- Study Issues
- Next Steps
- Policy Discussion



Where are we in the process?



Outreach & Engagement continues throughout process

Kirkland Human Services



2023-2024 grant-funded programs are grouped into 5 goal areas:

- Housing stability and food security
- Supportive relationships and community belonging
- A safe haven from violence and abuse
- Physical health and mental well-being
- Education and employment opportunities

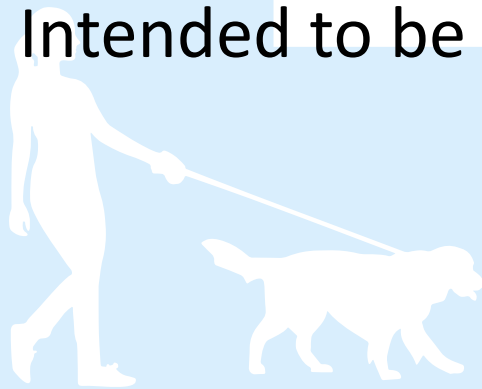
Examples of services City funds via nonprofits: emergency shelters, rental assistance, mental health counseling.

Human Services Element



Goals and policies:

- Support the provision of services that assist the economic, social and quality of life needs of community members, including those who face(d) barriers
- Support accessibility of human services
- Intended to be forward thinking



Community Engagement Goals

INVOLVE PRIORITY POPULATIONS

Black, Indigenous, and People of Color (BIPOC)

People who identify as lesbian, gay, bisexual, transgender, queer, intersex, asexual plus (LGBTQIA+)

Seniors

Low-income households

People experiencing homelessness

Youth

Renters

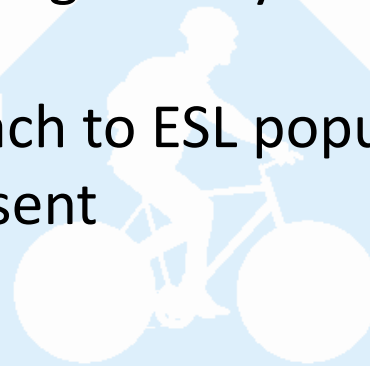
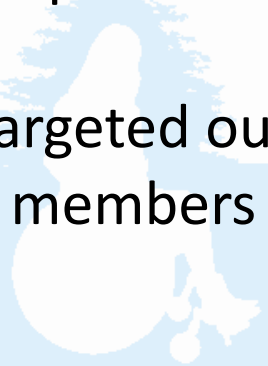
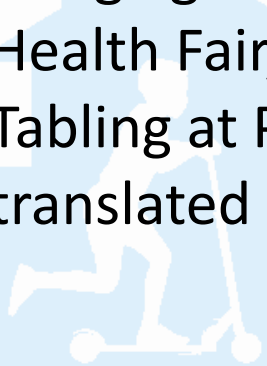
People with disabilities or accessibility challenges

Immigrant communities and people facing language barriers



Community Engagement

- Housing & Human Services focus group
- Housing & Human Services survey
- Presentations/discussions with boards and commissions (Human Services Commission, Senior Council, Youth Council)
- Presentation/discussion with Kirkland Alliance of Neighborhoods (KAN)
- Tabling at community events (Eastside Honoring Juneteenth, Totem Lake Connector Bridge grand opening, re-opening of 132nd Square Park, King County Promotores Network Health Fair, etc.)
- Tabling at Peter Kirk Community Center – targeted outreach to ESL populations with translated materials and bilingual City staff members present



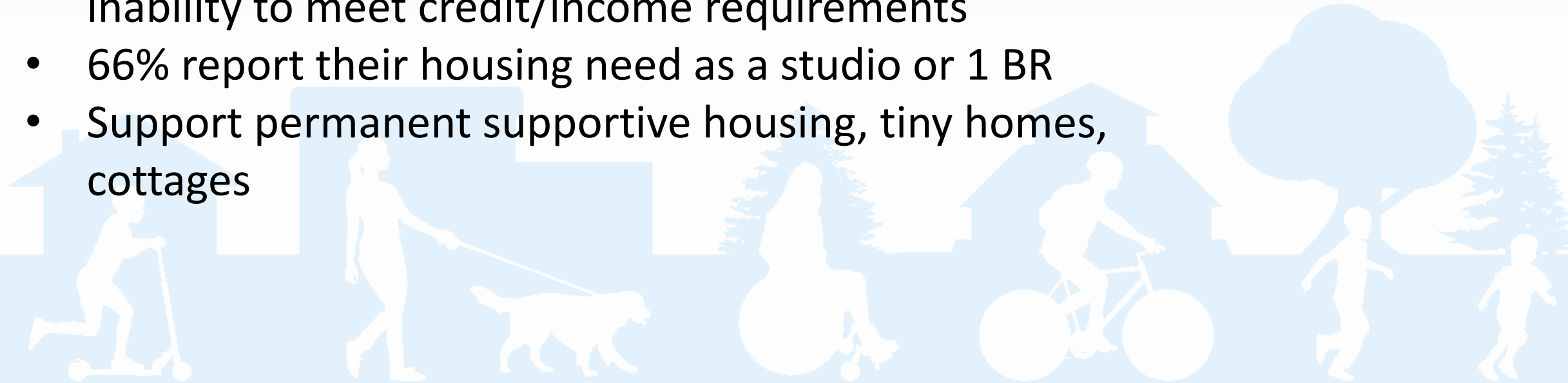
Focus Group & Survey Comments



- Support for low-income renters
- Need for more affordable housing options
- Address behavioral and mental health
- Support for people experiencing homelessness
- Support for the elderly to be able to continue living in Kirkland
- Encourage development of affordable housing that has services or amenities like grocery stores on-site
- More programs that address food access
- Spread awareness about programs and services
- Lack of public transportation is an issue to access services

Survey Comments: Unhoused Respondents

- 15 respondents experiencing homelessness
- 60% female
- Barriers in renting: lack of affordable options and inability to meet credit/income requirements
- 66% report their housing need as a studio or 1 BR
- Support permanent supportive housing, tiny homes, cottages



Human Services Study Issues



- Support affordable housing
- Support more housing options for seniors
- Move existing city-wide DEIB-related policies to another element
- Recognize the evolving nature of the provision of services to address mental health issues, addiction, and homelessness across federal, state, and regional agencies and other organization. Describe how the City could step in to fund or fill gaps.
- Update to include new agencies/programs/facilities/etc.

Human Services Study Issues



- Improve awareness of available services and resources
- Seek reasonable and fair allocation of King County tax dollars (Veterans and Human Services Levy) to City of Kirkland to support initiatives such as Health through Housing, King County Regional Housing Authority, Regional Crisis Response Agency, homeless outreach, and other services the City provides



New Human Services and Related Programs/ Resources



- King County Health Through Housing Initiative – permanent supportive housing at La Quinta site
- Regional Crisis Response (RCR) Agency
- Kirkland Homelessness Assistance and Response (HART) Team
- Kirkland Mobile Integrated Health (MIH)



Next Steps



- April 23 Human Services Commission policy briefing
- Refinements to goals & policies
- Public hearing May 9
- Council adoption by end of year



Discussion



Question #1: Do Commissioners have any questions or feedback about any specific draft proposed revisions to Human Services Element goals or policies?

Question #2: Are there any policy themes or concepts that should be incorporated into the draft policies?



Proposed Draft Policies



Policy HS-2.2: ~~Encourage~~ Support human services programs to become accessible to all in the community by removing any barriers, including but not limited to architecture, economic, cultural, language, communication, and location. Support virtual programs as appropriate.



Proposed Draft Policies



Policy HS-2.5: Coordinate with human services organizations to locate facilities near commercial centers where transit ~~and non-motorized~~ facilities and active transportation infrastructure exist.



Proposed Draft Policies



Policy HS-2.7: Pursue land use policies, development regulations, and funding to promote the integration of human service providers into locations with other community services and amenities to increase access to underserved communities and reduce stigma associated with human services provided to these communities.



Proposed Draft Policies



Policy HS-4.5: Encourage affordable and appropriately designed older adult housing.

Complementary policy in Housing Element

Policy H-2.#E: Support housing options, programs, and services that allow seniors older adults to stay in their homes or neighborhood. Encourage universal design improvements that increase housing accessibility.