



YOU BELONG HERE

Sustainable – Connected – Welcoming

Comprehensive Plan Update: Housing & Human Services

Human Services Commission

May 23, 2023

Lindsay Levine, AICP, Senior Planner, llevine@kirklandwa.gov

Scott Guter, AICP, Senior Planner, sguter@kirklandwa.gov

Katie Hogan, Environmental Program Coordinator, khogan@kirklandwa.gov



Planning Context in Washington

GROWTH MANAGEMENT ACT

VISION 2050 & MULTICOUNTY
PLANNING POLICIES

COUNTYWIDE
PLANNING POLICIES

LOCAL
COMPREHENSIVE
PLANS

Washington State Growth Management Act

Puget Sound Regional Council's Vision 2050

King County Countywide Planning Policies

Kirkland Comprehensive Plan

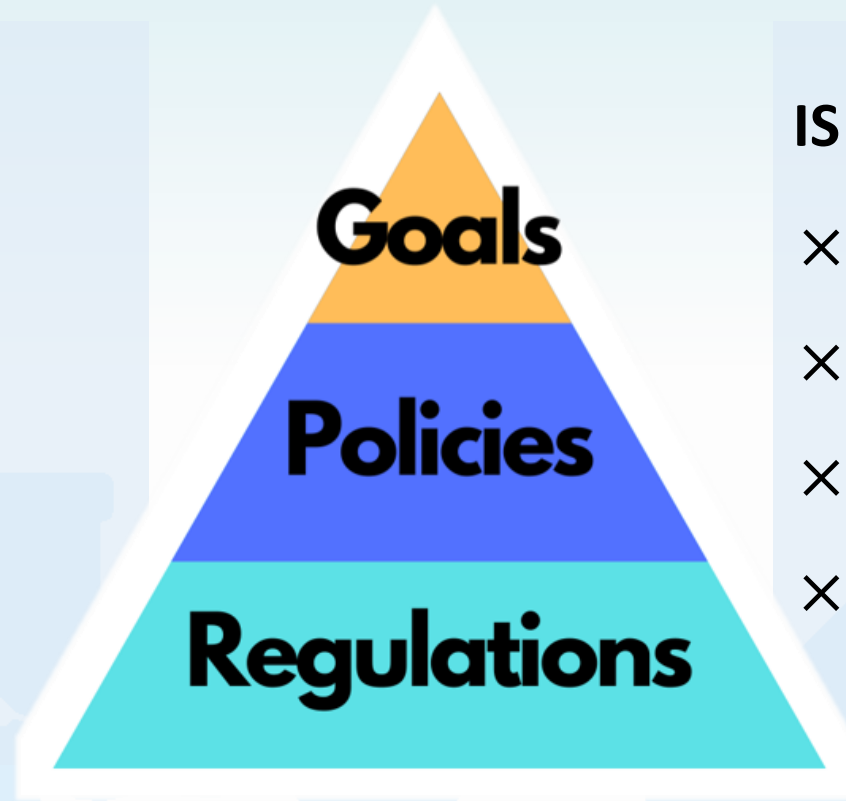
Regional coordination with others

Kirkland codes and regulations

A Comprehensive Plan...

IS:

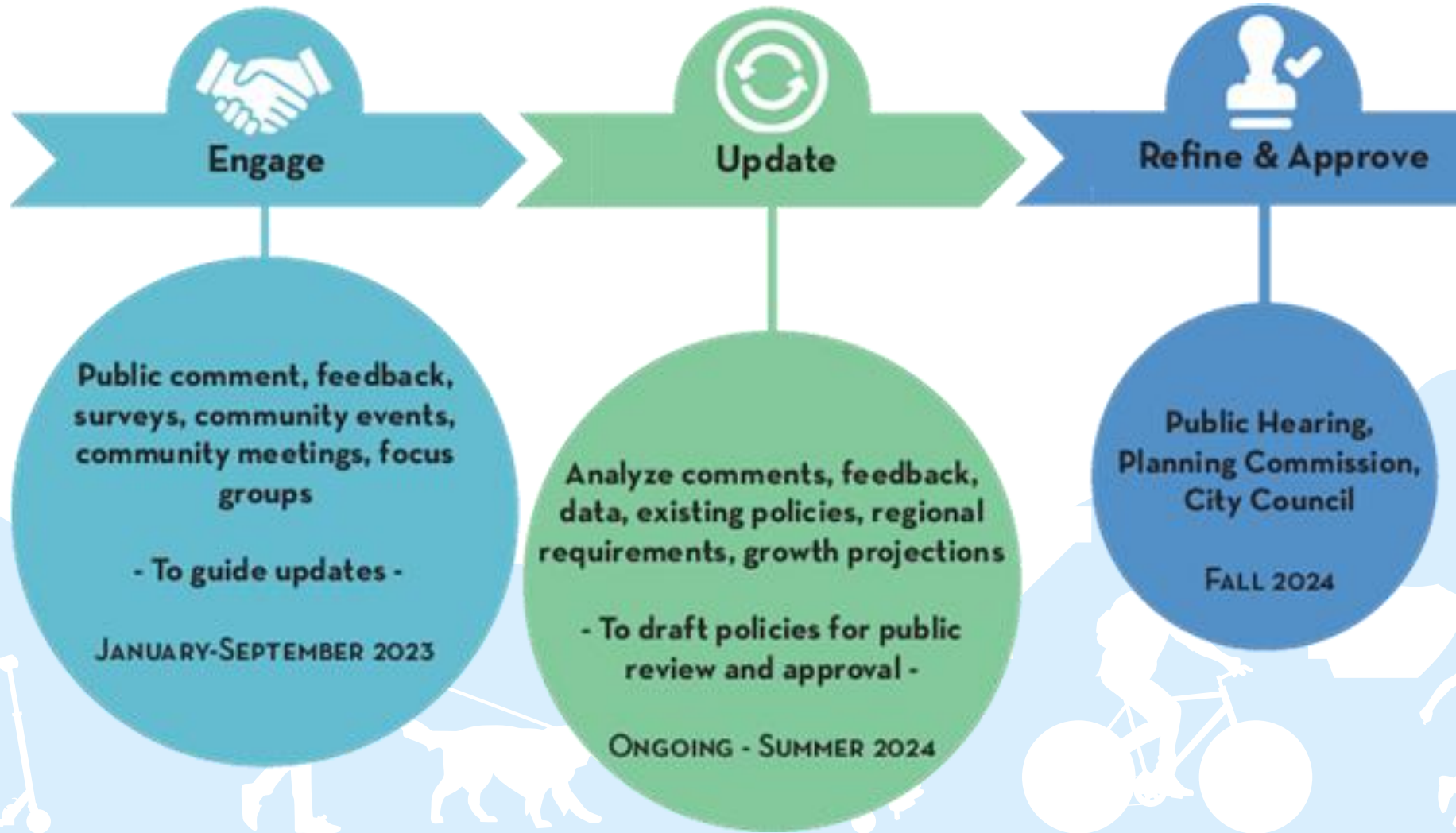
- ✓ A vision for the future
- ✓ A decision-making guide
- ✓ A basis for policy
- ✓ A basis for zoning
- ✓ Flexible and adaptive



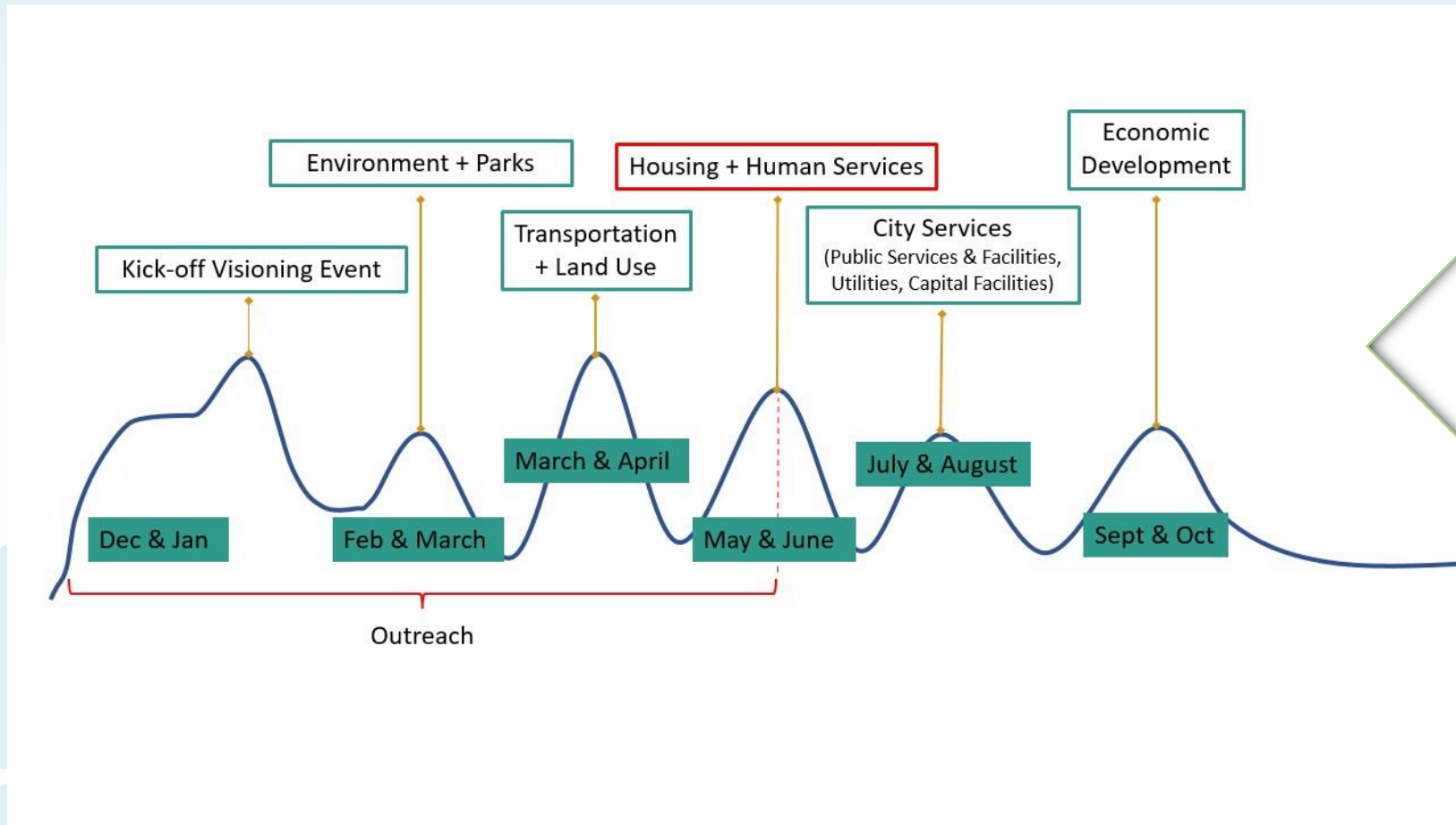
IS NOT:

- × A zoning ordinance
- × Rigid, unchanging policy
- × Specific in scope
- × The only planning tool used by the City

Phases of Plan Update 2023-2024



2023 Community Engagement Schedule



- Focus Groups
- Surveys
- Community Conversations
- Events
- Schools
- Public Comments
- Community Organizations

Community Engagement Goals

INVOLVE PRIORITY POPULATIONS

Black, Indigenous, and People of Color (BIPOC)

People who identify as lesbian, gay, bisexual, transgender, queer, intersex, asexual plus (LGBTQIA+)

Seniors

Low-income households

People experiencing homelessness

Youth

Renters

People with disabilities or accessibility challenges

Immigrant communities and people facing language barriers

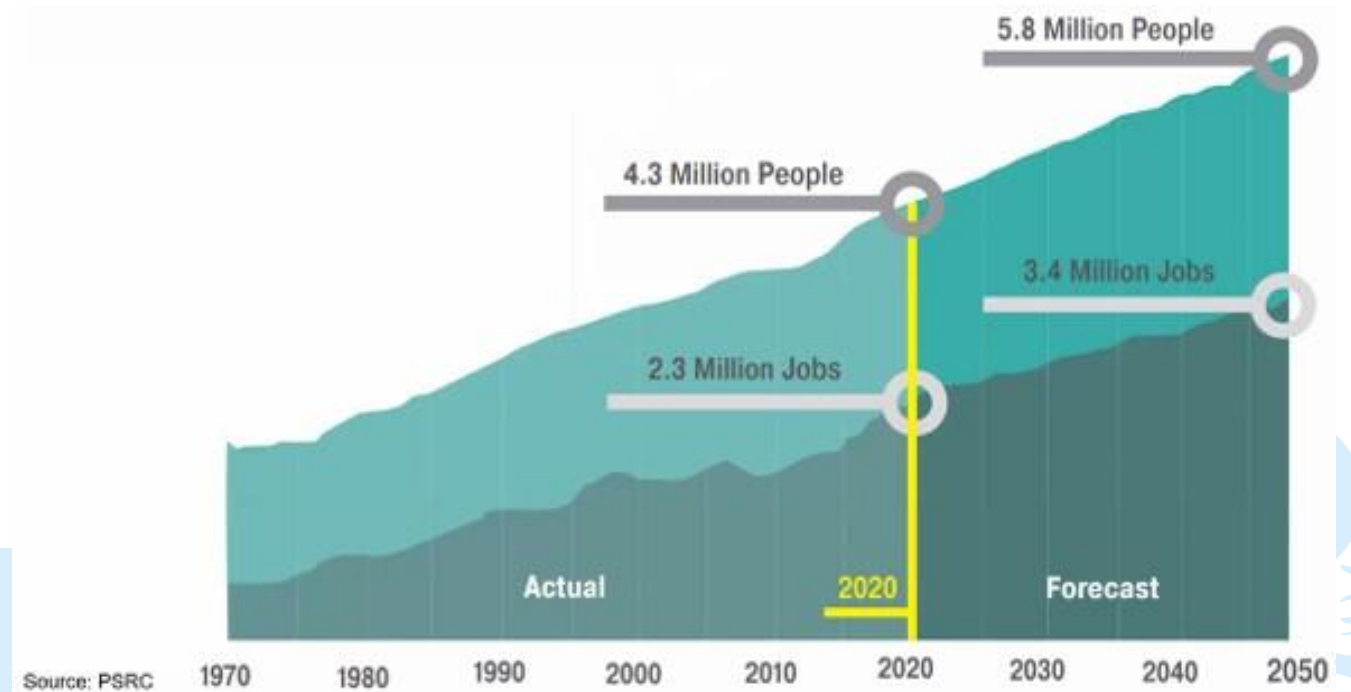


Growing Region

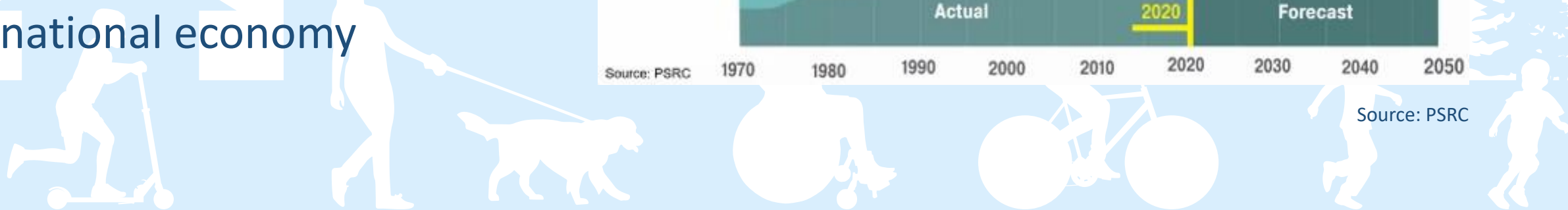


The region is projected to add about 1.5 million people by 2050

Add about 1.2 million jobs by 2050. Outperforming the national economy



Source: PSRC



Growth Targets: Planning for Capacity



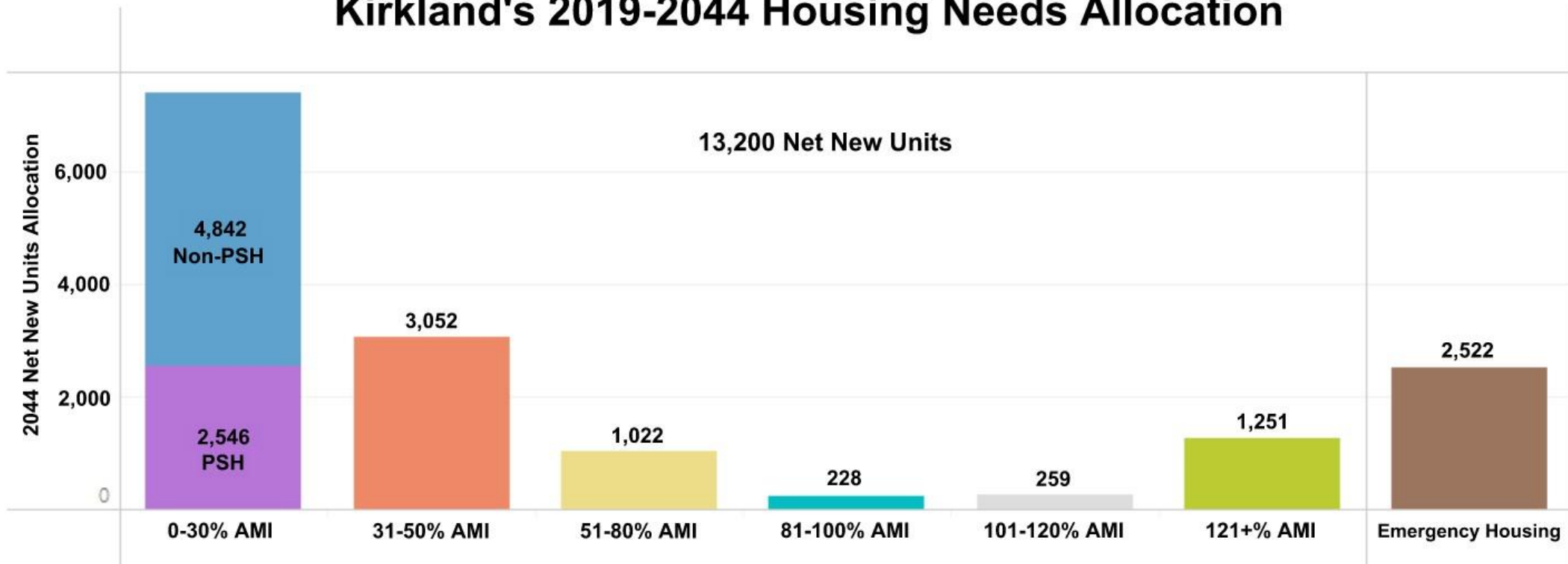
HOUSING UNITS			JOBS		
Existing (2018)	K2044 Target (2019 – 2044)	Existing Capacity (2023) *	Existing (2018)	K2044 Target (2019 – 2044)	Existing Capacity (2023)*
38,656	13,200 (above 2018 existing)	19,595	49,280	26,490 (above 2018 existing)	36,082

**Estimate pending completion of the City's 2044 capacity analysis. Number reflects approximate remaining capacity from K2035 Plan (units/jobs planned for but not achieved) + additional capacity adopted in NE 85th St Station Area Plan*

Kirkland's Housing Needs



Kirkland's 2019-2044 Housing Needs Allocation



Source: King County Department of Community and Human Services, Performance Measurement and Evaluation, March 3, 2022

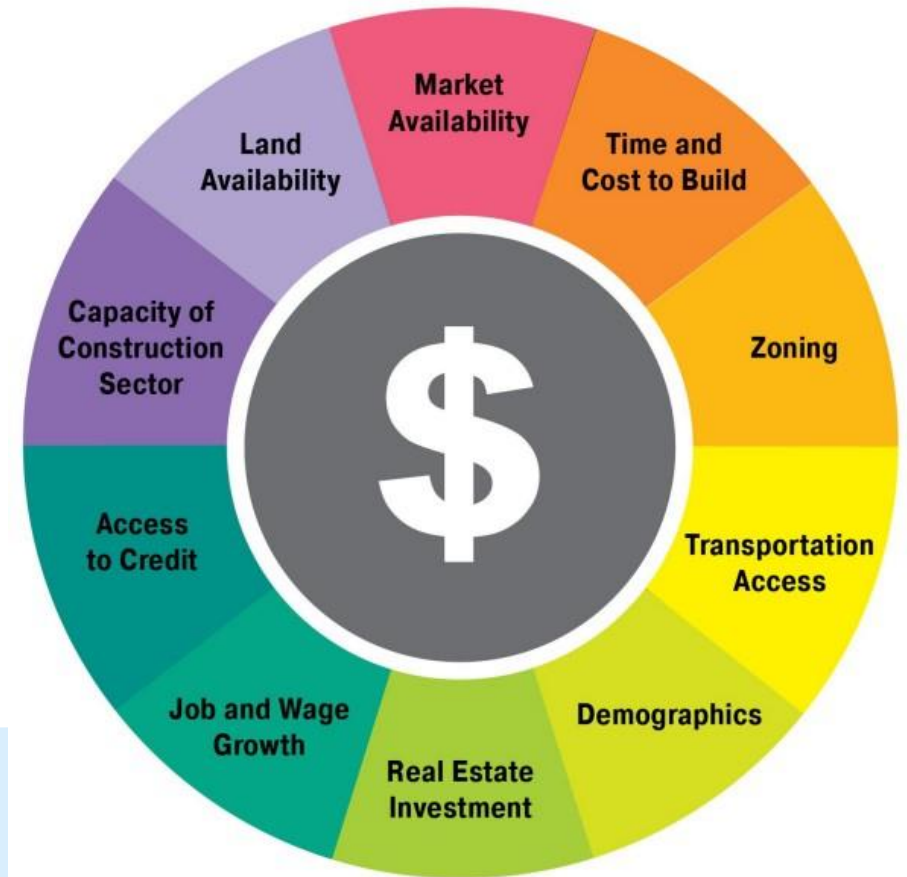
Housing Affordability



Affordable Rent	\$733	\$1,222	\$1,955	\$2,201 Average Kirkland rent	\$2,444
* Annual Income	\$29,322 (very low income)	\$48,870 (low income)	\$78,192 (moderate income)	Needs an income of \$87,820	\$97,740 (median income)
Affordable Price		\$177,022	\$304,026	IN KIRKLAND: Average Price of Condo: \$374,000 Average Price of SF House: \$948,000	\$388,695

*For a Household Family of 3

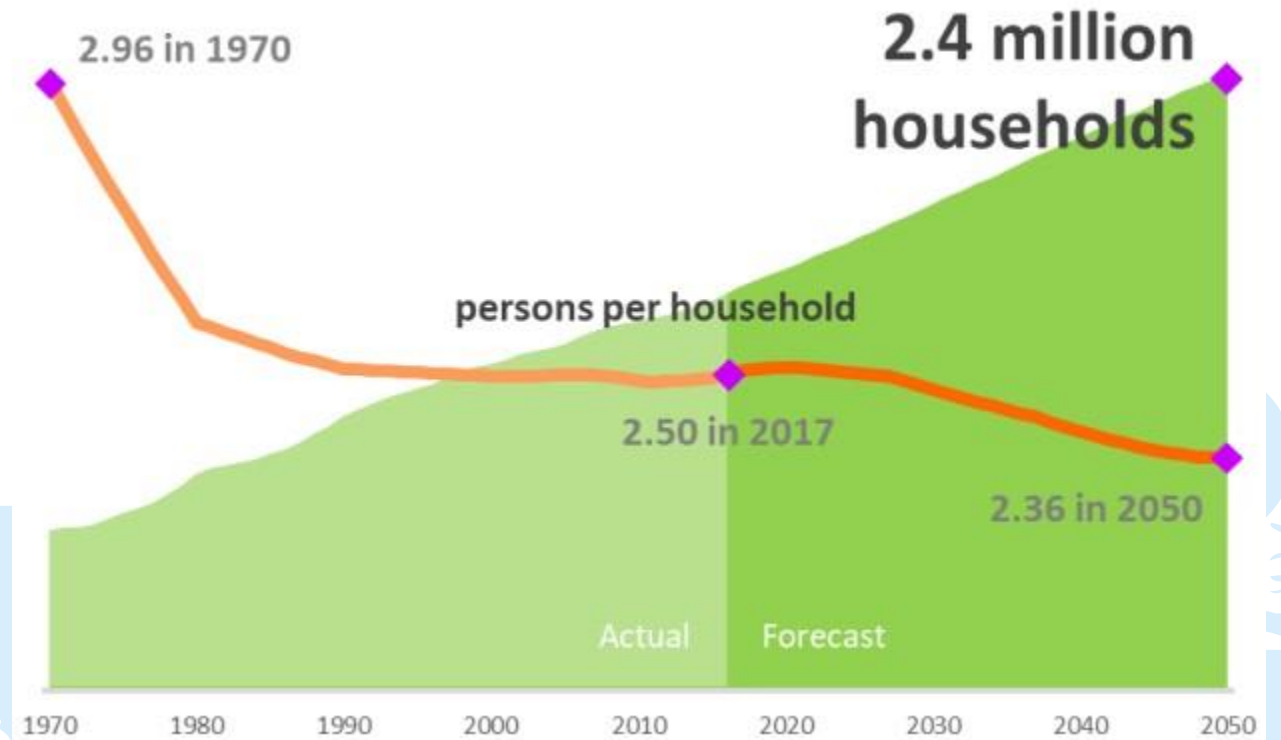
Source: Kirkland 2018 Strategic Housing Plan



Shrinking Household Size



- The region is projected to add 830,000 households between now and 2050
- Fewer persons per household means greater demand for housing

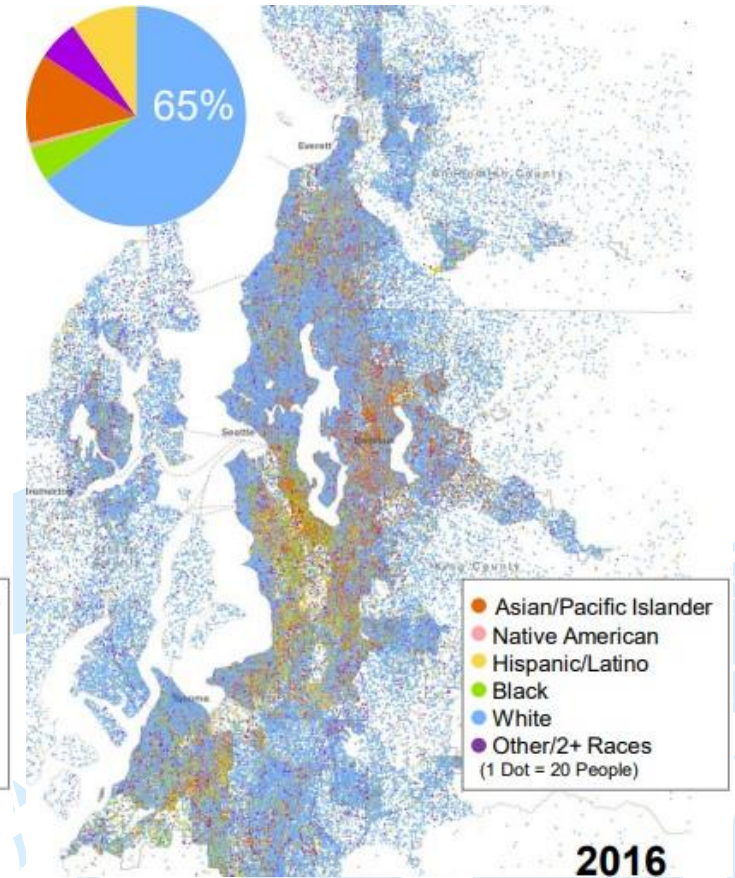
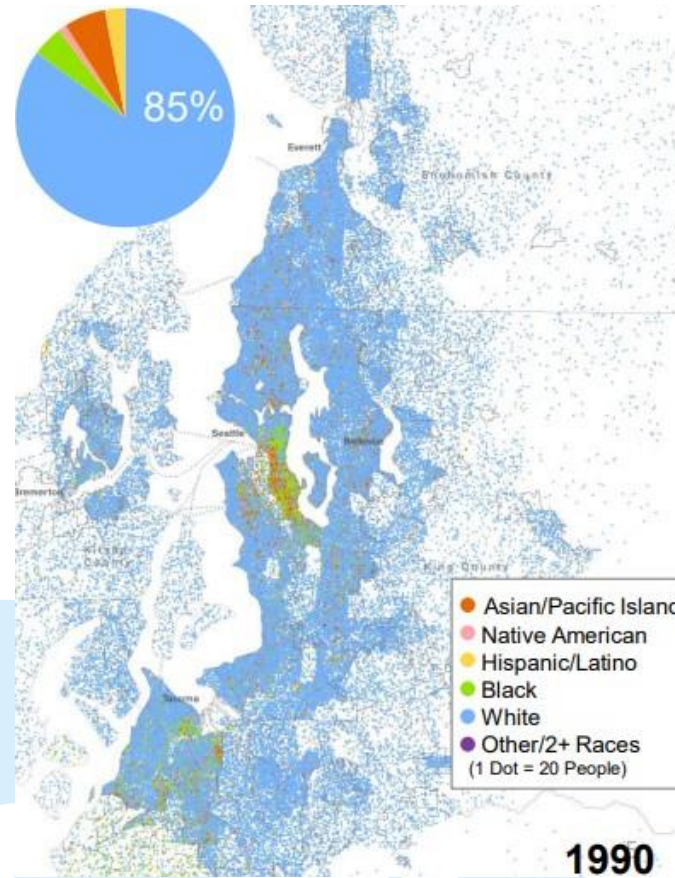


Source: PSRC

Increased Diversity



- From 1990-2016 Puget Sound has become more diverse
- Represents 35% of the population
- 81% of the growth since 2000



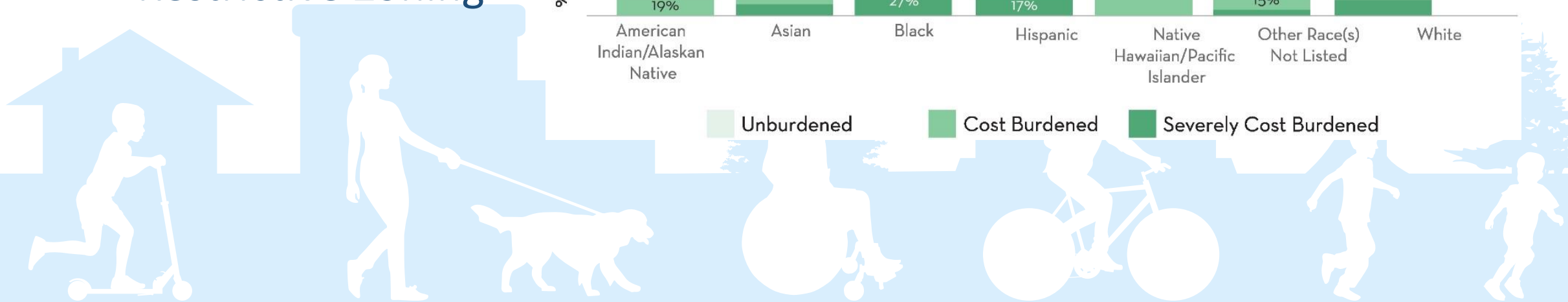
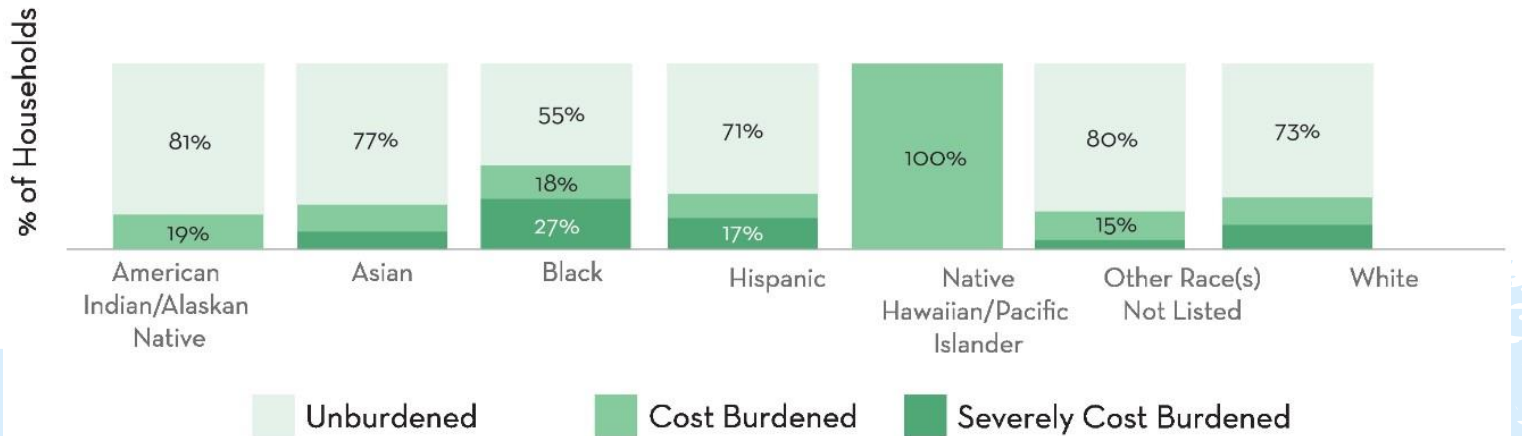
Source: PSRC

Legacy of Discrimination



- Racial Covenants
- Redlining
- Restrictive Zoning

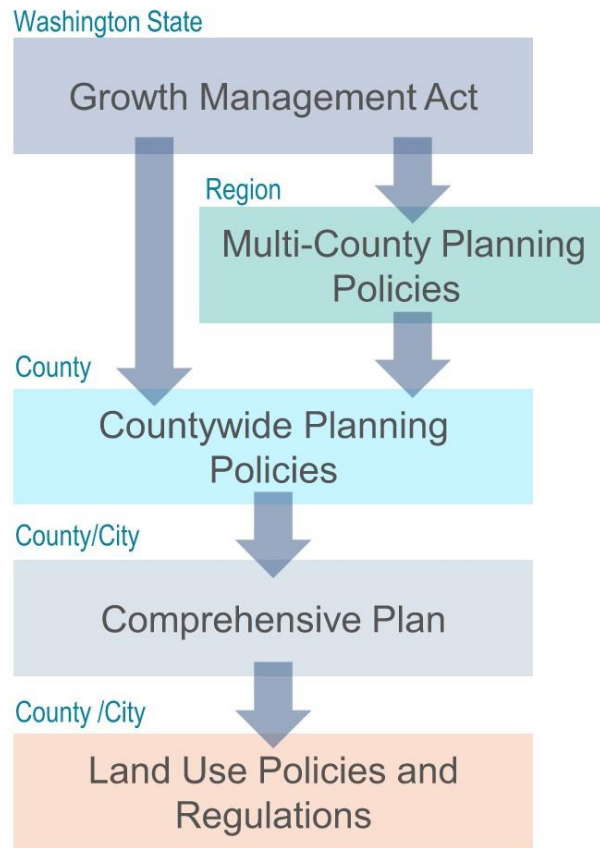
Kirkland Household Cost Burden by Race/Ethnicity
(CHAS, 2015-2019)



Housing Element



Statewide Growth Planning Framework



Goals and policies must:

- Plan and accommodate housing affordable to all income levels
- Address the legacy of zoning
- Address patterns of disinvestment
- Identify displacement risk
- Prevent or reduce displacement

Kirkland Human Services



2023-2024 grant-funded programs are grouped into 5 goal areas:

- Education, job skills, & support to help individuals
- Health care to be as physically and mentally fit as possible
- Housing stability and food security
- Safe haven from all forms of violence and abuse
- Supportive relationships – families, neighborhoods, & communities



Human Services Element



Goals and policies:

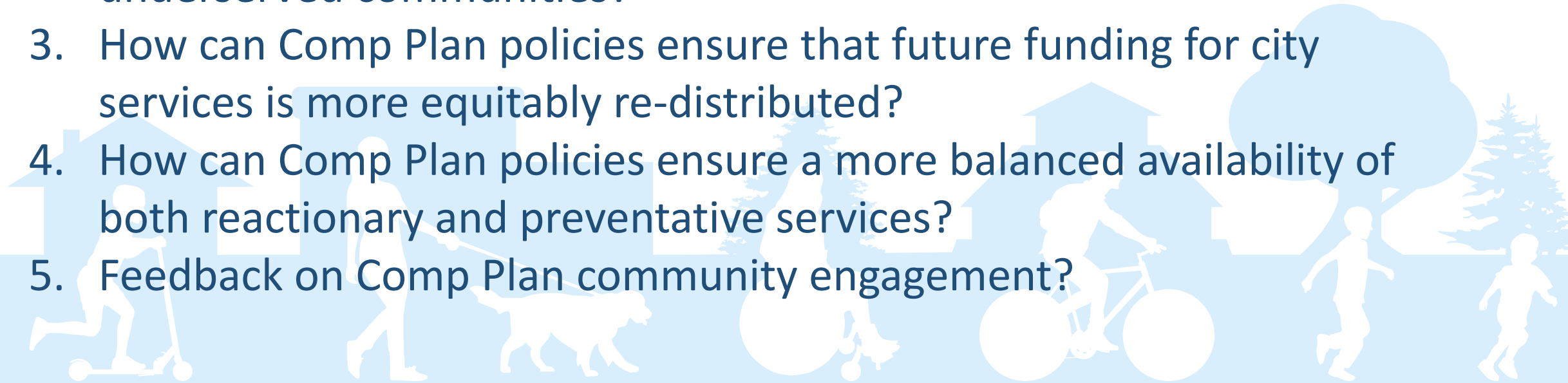
- Define the City's role in fostering diversity and equity
- Support nonprofit organizations that serve economic, social and quality of life needs of community members, including those who historically faced barriers



Housing & Human Services Discussion



1. How should the Housing Element respond to Kirkland's current and future housing needs?
2. Which services are in greatest need by BIPOC communities and other underserved communities?
3. How can Comp Plan policies ensure that future funding for city services is more equitably re-distributed?
4. How can Comp Plan policies ensure a more balanced availability of both reactionary and preventative services?
5. Feedback on Comp Plan community engagement?



How to Get Involved

Visit kirklandwa.gov/k2044 to learn more and sign up for email alerts

Take the Housing and Human Services [survey](#)

Send us your thoughts by emailing:

2044ComprehensivePlan@kirklandwa.gov

**Scan this QR Code
to take the Housing
& Human Services
survey**

