

KIRKLAND 2044 COMPREHENSIVE PLAN



The Sustainability, Climate, and Environment (SCE) Element

YOU BELONG HERE
Sustainable • Connected • Welcoming

The Sustainability, Climate, and Environment (SCE) Element establishes city-wide goals and policies designed to advance Kirkland's continued efforts in maintaining a biologically sound natural environment. Combined with future-focused development principles that guide the built environment, these policies ensure a livable and sustainable community for generations to come.

Cities can only be sustainable if their growth considers the environment that they depend upon for clean air, fresh water, food supplies, and other ecosystem services. Globally, the sustainability of human life—including that of vulnerable populations—requires both equitable distribution of economic resources and protection of a healthy environment.

Equally important, communities like ours must implement resiliency and adaptability policies into our plans so that we can collectively adapt to the ever-changing environment in a socially responsible manner.

SCE Policies Emerge from 3 Main Components...

Natural Systems



Restore and protect our natural systems and critical areas including streams, wetlands, habitat areas, trees and Lake Washington for maximum ecological value and function

Built Environment



Provide regional leadership in the built environment by incentivizing and in some cases requiring sustainable development that meets the most rigorous high performing building standards

Climate Change



Prepare our community for the inevitable climate impacts facing our region (rising sea levels, severe weather events, extreme heat events, droughts, wildfires), reduce the use of energy and fossil fuels while embracing renewable energy such as solar and wind. Reinforce climate action programs, initiatives and steps the community can take to help Kirkland reach its carbon reduction goals.

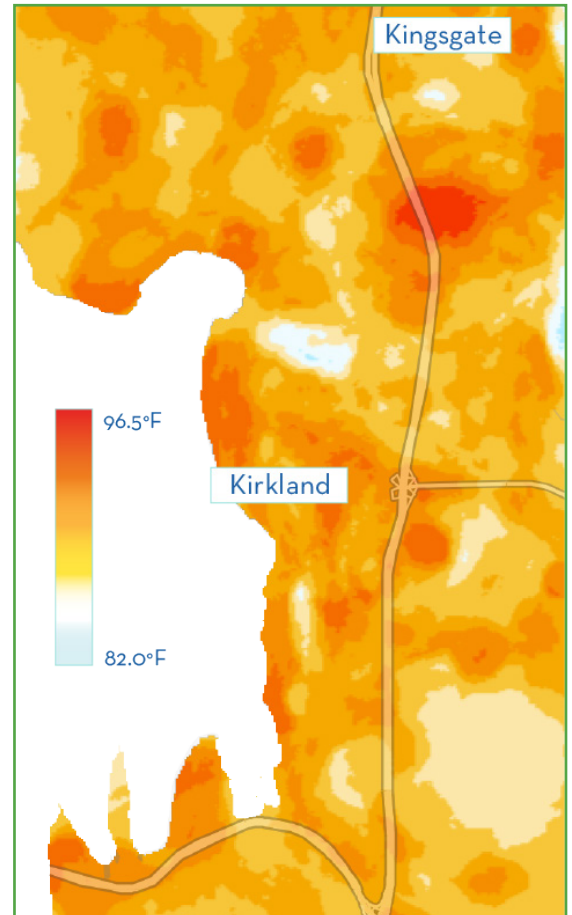


Figure 1. Evening Urban Temperatures - July, 2020

Map Courtesy of King County Heat Mapping Study, conducted with CAPA Strategies, 2021.

SCE SURVEY





YOU BELONG HERE
Sustainable • Connected • Welcoming



Climate Action in Kirkland

Understanding Our Emissions Profile

Being aware of the ways in which Kirkland currently consumes is important to better explore alternative options for reduction. Current sources of emissions in Kirkland include stationary combustion (burning fossil fuels in homes and businesses), mobile combustion (driving cars or other vehicles fueled by gas) and electricity (using electricity that is not renewably sourced)

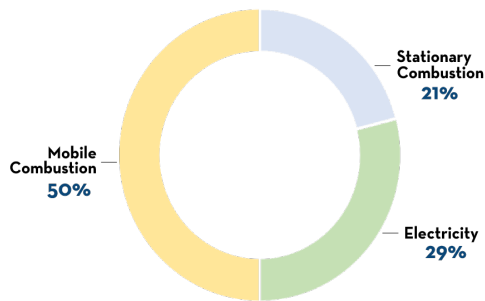


Figure 2. Kirkland Community Emissions Breakdown by Source, 2017

Washington State has committed to accelerated reduction of GHG emissions that the City aims to achieve:

50% reduction by 2030,

75% reduction by 2040,

95% reduction by 2050.

Partnership between and within our community is essential to tackling these ambitious but essential goals

Other Major Issues

- Climate equity for all residents (intersection of climate change adaptation and equity)
 - Equitable access to alternative forms of transit, local food, energy efficiency
 - Equitable access to adaptation and resiliency measures
- Over-consumption of energy, food and water and other finite resources
- Accelerating reductions of greenhouse gas (GHG) emissions to reach established targets
- Resource scarcity and shortages
- Pollution/waste management issues

How Can We Get There?

If you have ideas and want your voice heard during this important update period, please take a few minutes to complete our Sustainability, Climate & Environment survey before April 1st

SCE SURVEY



To submit comments or ask a question contact DBarnes@Kirklandwa.gov or call (425)587-3250

