



YOU BELONG HERE

Sustainable – Connected – Welcoming

Sustainability, Climate and Environment Element – Goal and Policy Update

Planning Commission Study Session

February 8, 2024



Agenda



- SCE Element Overview
- Community Input Review
- Study Issues
- Draft Goal & Policy Revisions
- Planning Commission Questions & Feedback



What does the SCE Element do?



- Protects, manages and enhances the natural environment while minimizing impacts
- Guides public and private development of the built environment to reduce the impact of development on the natural environment
- Supports Climate Actions and Planning including:
 - Measuring and reducing community and government emissions
 - Mitigating and adapting to climate impacts
 - Resilience planning to future climate impacts



YOU BELONG HERE
Sustainable. Connected. Welcoming.

COMMUNITY INPUT

SCE Element Key Themes

- Address climate change impacts
- Address heat and smoke events with an equity lens to increase resilience
- Promote major city programs and how the city can best help the community
- Codes and incentives should be used as solutions
- Focus on equity in policy and access to programs
- Promote electrification of the community
- Provide education on sustainability topics
- Report on progress through annual reports and dashboards



The City is filled with green roofs, community gardens, tree-filled streets, daylighted streams and stormwater swales, and connected open spaces that make Kirkland more resilient and livable in the face of climate change. Kirkland is a model, sustainable city that values preserving and enhancing our natural and built environment for our enjoyment and for future generations.

-Excerpt from City's Vision Statement



YOU BELONG HERE
Sustainable – Connected – Welcoming

SCE FOCUS AREAS

Required State/Regional/County Updates



- Compliance with required State, regional, or countywide policies;
- Recommendations from the 2022 Equity Review of the Kirkland 2035 Comprehensive Plan;
- Linking SCE and functional plans (e.g., Sustainability Strategic Plan, Transportation Strategic Plan; Park, Recreation, and Open Space Plan);
- Addressing Kirkland 2044 study issues as directed by the PC and Council; and/or
- Aligning SCE with the draft Kirkland 2044 Vision and Guiding Principles and in progress draft revisions in other Plan elements



Study Issues: SCE

ELECTRIFICATION

- Working with Puget Sound Energy by coordinating on electrification and actions to promote electric grid integrity.
- Ensuring codes are in place to accelerate electrification of vehicles, bicycles and other electric mobility options and adequate Electric Charger infrastructure to support them.

CLIMATE POLICY

- Update policies related to mitigation of climate impacts
- Provide climate resilience policies as required by legislation

SUSTAINABLE DEVELOPMENT

- Ensure that key sustainable components (such as High Performing Buildings, Green Factor and Infrastructure from the NE 85th Street Station Area Plan) are incorporated in other places in the City

NATURAL RESOURCE CONSERVATION

- Intensify potable water conservation
- Protecting and enhancing tree canopy



YOU BELONG HERE
Sustainable – Connected – Welcoming

DRAFT GOAL & POLICY AMENDMENTS

SCE: From Goal to Regulations



Goal E-4: Manage the built environment to reduce waste, prevent pollution, conserve resources and increase energy efficiency

Policy E-4.1: Expand City programs that promote high performing sustainable building certifications Green Factor landscaping standards and require them when appropriate.

Voluntary High Performing Building Program

Sustainability Strategic Plan
– Building and Infrastructure Focus Area - Applying to new construction , and existing where applicable

Kirkland Zoning Code (KZC)
Development Regulations

KZC 35.10.2.h: . 2.
For development where the maximum height of the structure is 60 feet above average building height : Development shall be designed, built and certified to achieve or exceed the high performing building standards described in KZC 115.62. elevation:

Draft SCE Goals & Policies



Draft revisions being brought forward tonight:

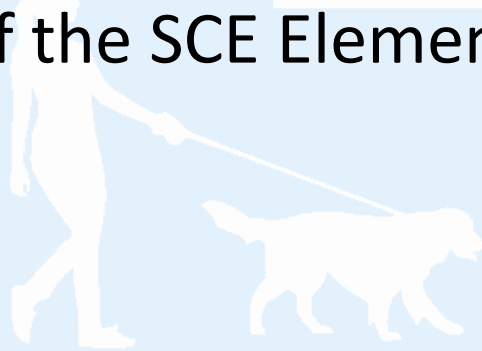
- With the exception of one policy discussing embodied carbon limits, the goals and policies were identified after filtering out the required policies from State/County and legislations and existing policies, and that are new.
- There are a combination of 14 goals/policies.



Questions for Planning Commission



1. Do Commissioners have any questions or feedback about any specific draft revisions to SCE goals or policies?
2. Are there any policy themes or concepts that you believe need to be incorporated into the draft policies?
3. Is there any additional information that PC would find helpful to include in a future briefing of the SCE Element?



Draft SCE Goals & Policies



Goal E-2 : Protect, enhance and restore trees and vegetation in the natural and built environment to improve air quality, sequester carbon and ensure resilience to climate impacts

NEW Policy E-2.#: Ensure consistent interdepartmental and division stakeholder collaboration to effectively implement the Urban Forest Strategic Management Plan through cohesive work programs that integrate actions and goals across various departments.



Draft SCE Goals & Policies



Goal E-4: Manage the built environment to reduce waste, prevent pollution, conserve water and other resources, and increase energy efficiency, electrification and renewable energy production and storage.

Policy E-4.6: Work with regional partners such as Regional Code Collaborative (RCC) to build on the Washington State Energy Code, leading the way to “net-zero carbon” buildings through innovation in local codes, ordinances, and related partnerships and establishing embodied carbon limits for all projects.

NEW Policy E-4.1#: Work locally and regionally with partners and the community to develop a facility that houses and promotes equitable access to hand and electric tools, re-use of building materials, and other usable materials to foster a reuse community, promote equitable access to resources and reduces embodied carbon, waste, energy use and emissions.

Draft SCE Goals & Policies



NEW Goal E-X: Promote, enhance and implement plans and actions that are responsive to climate change impacts to ensure equitable community resilience



Draft SCE Goals & Policies



Goal E-5: Target net-zero emissions and decarbonization for entire community ~~carbon neutrality~~ by 2050 to greatly reduce the worst impacts of climate change and fulfilling the City's regional responsibilities per King County Planning Policies and State legislation.

NEW Policy E-5.#: Advocate for clean, renewable aviation fuels to drastically reduce carbon emissions.

NEW Policy E-5.X: Establish goals, create and implement actions to reduce community and per capita vehicle miles travelled (VMT) that are aligned with overall GHG emission targets for 2030, 2040 and 2050. (TSP XX) (Transportation Element XX)



Draft SCE Goals & Policies



NEW Goal E-#: Ensure a climate resilient community by working intentionally to reduce and eventually eliminate the use of fossil fuels and to be prepared for existing and future climate impacts

NEW Policy E-#: Create a climate preparedness study by 2026 with goals and actions to ensure community resilience to climate impacts and incorporate its actions primarily into functional plans such as the Sustainability Strategic Plan, Transportation Strategic Plan, Hazard Management Plan and other relevant implementation plans.

NEW Policy E-#: Provide support and financial assistance for under-served populations so they are able to make and maintain the transition to clean energy and full electrification of homes, electric vehicles and charging infrastructure to ensure climate resilience to known, and flexibility to address, unknown impacts.

NEW Policy E-#: Work with regional partners to help leverage funding to help Kirkland electrify its homes business, institutions and all means of transportation to counteract climate impacts and unintended outcomes.



Draft SCE Goals & Policies

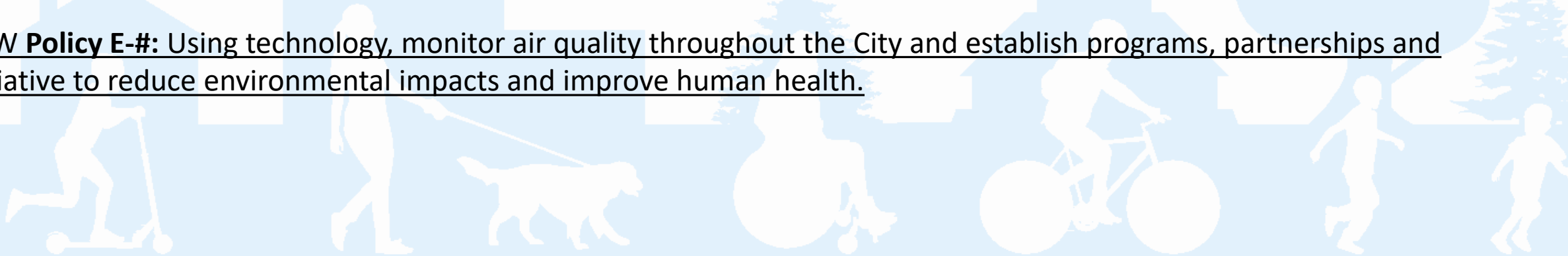


NEW Goal E-#: Ensure a climate resilient community by working intentionally to reduce and eventually eliminate the use of fossil fuels and to be prepared for existing and future climate impacts

NEW Policy E-X: Establish Climate Resilience Hubs in the City and or programs/initiatives to provide mitigation during heat and smoke events to ensure public health.

NEW Policy E-X: Ensure the City's Water Plan provides equitable access to safe, clean drinking water to the entire community and especially during times of drought or emergencies

NEW Policy E-#: Using technology, monitor air quality throughout the City and establish programs, partnerships and initiative to reduce environmental impacts and improve human health.



Next Steps



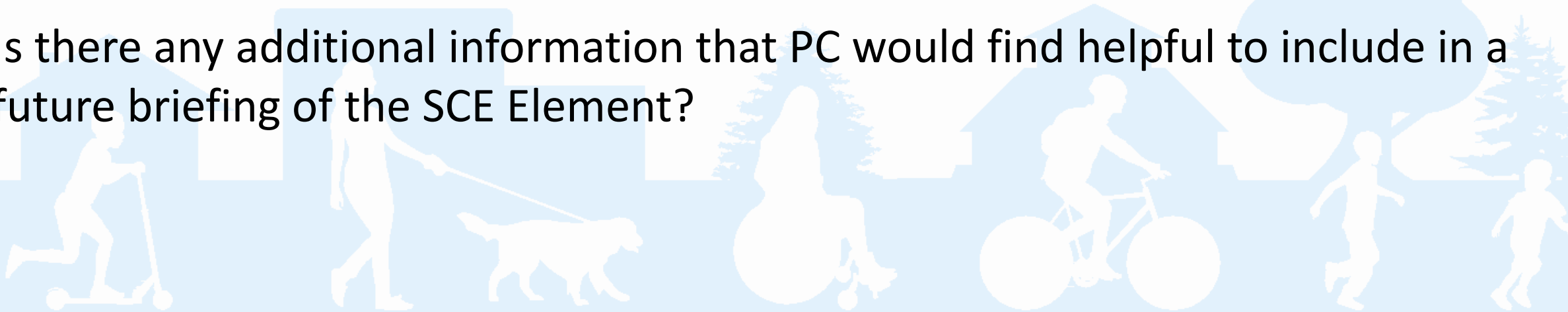
- Continue to refine revisions to the SCE Element
- Planning Commission Hearings – tentatively April and May
- Final adoption by City Council by the end of 2024



Questions for Planning Commission



1. Do Commissioners have any questions or feedback about any specific draft revisions to Land Use goals or policies?
2. Are there any policy themes or concepts that you believe need to be incorporated into the draft policies?
3. Is there any additional information that PC would find helpful to include in a future briefing of the SCE Element?



Draft SCE Goals & Policies



Suggested areas for Planning Commission focus

Draft revisions are driven by one, or more, of below:

- Compliance with required State, regional, or countywide policies
- Recommendations from the 2022 Equity Review of the Kirkland 2035 Comprehensive Plan
- Updating specific words or phrases to utilize more current or clearly-defined planning terms
- • Linking SCE to City functional plans
- • Addressing Kirkland 2044 study issues as directed by the PC and Council
- • Aligning SCE with the draft Kirkland 2044 Vision and Guiding Principles and in-progress draft revisions in other Plan elements