

KNOW WHAT'S BELOW
CALL BEFORE YOU DIG
811
callbeforeyoudig.org



SEE SHEET TRP-11

4/5

1-455

1-456

1-457

NE 124TH ST

GENERAL NOTES

1. SEE TREE REPLACEMENT TABLE (SHEET TRT-1 ~TRT-2) FOR EXISTING TREE SPECIES TO BE REMOVED AND REPLACEMENT TREE SPECIES.
2. TREES REPLACED SHALL BE REPLACED "IN-PLACE" PER TREE REPLACEMENT DETAIL, SHEET NDT-4.
3. SEE SHEETS NDT-1~NDT-3 FOR TREE SCHEDULE AND NOTES.
4. TREES WITHIN THE 50' WIRE ZONE SHALL NOT EXCEED 25' MAXIMUM MATURE TREE HEIGHT.

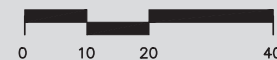
LEGEND

PROPERTY LINE
EXISTING RIGHT OF WAY
CHAIN LINK FENCE
PROPOSED TRANSMISSION ALIGNMENT
50' WIRE ZONE
PROPOSED TRANSMISSION POLE

DECIDUOUS TREE TO BE REMOVED
AND REPLACED (SEE GENERAL NOTES 1,2)
CONIFEROUS TREE TO BE REMOVED
AND REPLACED (SEE GENERAL NOTES 1,2)



2/14



TREE RESTORATION PLAN
NE 124TH STREET
FOR
PUGET SOUND ENERGY
CITY OF KIRKLAND, KING COUNTY, WASHINGTON

DAVID EVANS
AND ASSOCIATES INC.
14432 SE Evergreen Way, Suite 400
Burien, WA 98148
Phone: 425.519.8800



REVISIONS: APPD.

DATE: FEBRUARY, 2020
DESIGN: JCGA
DRAWN: GSK
CHECKED: JCGA
REVISION NUMBER:

SCALE: 1"=20'

PROJECT NUMBER:

PSEN0000-0169

DRAWING FILE:
laem16psen00000169.dwg

SHEET NO.

TRP-10
OF 23

Plot Date: 2/7/2020 2:06 PM
By: Gregory King
File: P:\P\SEN\0000169\0400CAD\LA Sheets\2019-Kirkland Restoration PlanLA-TRP_SEG_3_parc00000169.dwg
Save Date: 2/7/2020 11:24 AM

LEGEND

PROPERTY LINE
EXISTING RIGHT OF WAY
CHAIN LINK FENCE
☐ PROPOSED TRANSMISSION ALIGNMENT
50' WIRE ZONE
PROPOSED TRANSMISSION POLE

DECIDUOUS TREE TO BE REMOVED
AND REPLACED (SEE GENERAL NOTES 1,2)



CONIFEROUS TREE TO BE REMOVED
AND REPLACED (SEE GENERAL NOTES 1,2)



GENERAL NOTES

1. SEE TREE REPLACEMENT TABLE (SHEET TRT-1 ~TRT-2) FOR EXISTING TREE SPECIES TO BE REMOVED AND REPLACEMENT TREE SPECIES.
2. TREES REPLACED SHALL BE REPLACED "IN-PLACE" PER TREE REPLACEMENT DETAIL, SHEET NDT-4.
3. SEE SHEETS NDT-1~NDT-3 FOR TREE SCHEDULE AND NOTES.
4. TREES WITHIN THE 50' WIRE ZONE SHALL NOT EXCEED 25' MAXIMUM MATURE TREE HEIGHT.

TREE RESTORATION PLAN
NE 124TH STREET
FOR
PUGET SOUND ENERGY
CITY OF KIRKLAND, KING COUNTY, WASHINGTON

**DAVID EVANS
AND ASSOCIATES, INC.**
14432 SE Eastgate Way, Suite 400
Bellevue Washington 98007
Phone: 425.519.6500



REVISIONS: APPD.

DATE: FEBRUARY, 2020
DESIGN: JCGA
DRAWN: GBK
CHECKED: JCGA
REVISION
NUMBER:

SCALE: 1"=20'

PROJECT NUMBER:

DRAWING FILE:

laEM16psen00000169.dwg

SHEET NO.

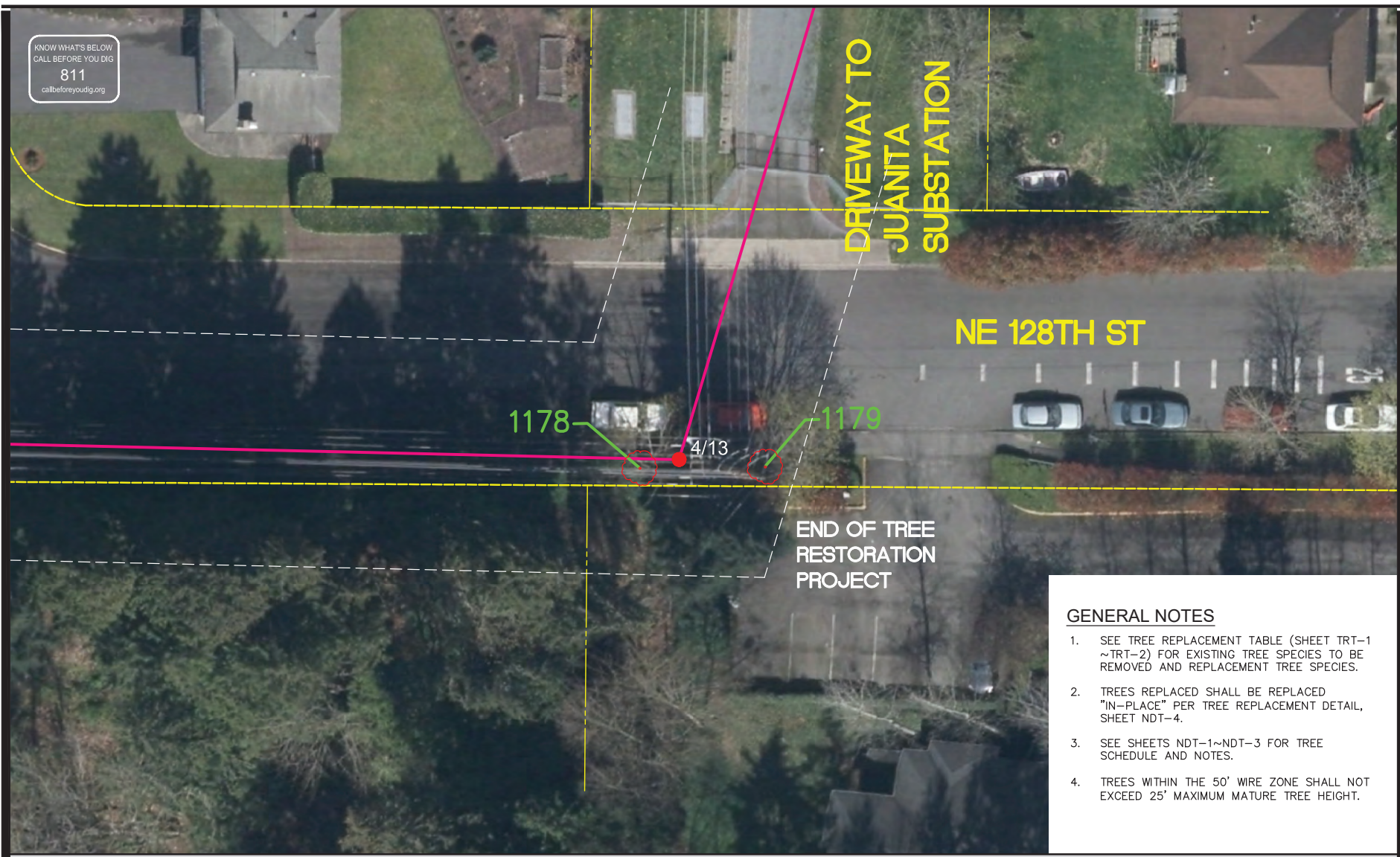
TRP-11

22

0720

Plot Date: 2/10/2020 8:30 AM
Save Date: 2/7/2020 2:13 PM
By: Gregory King
File: P:\PSE\N0000169\400\CA\LA\Shrubs 2018-Corland Restoration Plan\TRP-SEG_3_pse0000169.dwg

KNOW WHAT'S BELOW
CALL BEFORE YOU DIG
811
callbeforeyoudig.org



LEGEND

- PROPERTY LINE
- EXISTING RIGHT OF WAY
- CHAIN LINK FENCE
- PROPOSED TRANSMISSION ALIGNMENT
- 50' WIRE ZONE
- PROPOSED TRANSMISSION POLE



2/14

DECIDUOUS TREE TO BE REMOVED
AND REPLACED (SEE GENERAL NOTES 1,2)



CONIFEROUS TREE TO BE REMOVED
AND REPLACED (SEE GENERAL NOTES 1,2)



GENERAL NOTES

1. SEE TREE REPLACEMENT TABLE (SHEET TRT-1 ~TRT-2) FOR EXISTING TREE SPECIES TO BE REMOVED AND REPLACEMENT TREE SPECIES.
2. TREES REPLACED SHALL BE REPLACED "IN-PLACE" PER TREE REPLACEMENT DETAIL, SHEET NDT-4.
3. SEE SHEETS NDT-1~NDT-3 FOR TREE SCHEDULE AND NOTES.
4. TREES WITHIN THE 50' WIRE ZONE SHALL NOT EXCEED 25' MAXIMUM MATURE TREE HEIGHT.



TREE RESTORATION PLAN
NE 124TH STREET
FOR
PUGET SOUND ENERGY
CITY OF KIRKLAND, KING COUNTY, WASHINGTON

DAVID EVANS
AND ASSOCIATES INC.
14432 SE Evergate Way, Suite 400
Burien, WA 98148
Phone: 425.519.9500



REVISIONS: APPD.

DATE: FEBRUARY, 2020
DESIGN: JCGA
DRAWING: GSK
CHECKED: JCGA
REVISION NUMBER:

SCALE: 1"=20'

PROJECT NUMBER:

PSEN0000-0169

DRAWING FILE:

laEM16pse00000169.dwg

SHEET NO.

TRP-12
OF 23

Plot Date: 2/10/2020 12:24 PM By: Gregory King
Save Date: 2/10/2020 11:48 AM By: Gsk
File: P:\PSE\N00000\89\040\CCOLA\Sheet 20 18-Kirkland Restoration Plants TRP-SEG_1_NDT_pse00000189.dwg

TREE SCHEDULE

TREE SCHEDULE				PLANT AREA QUANTITIES									
BOTANICAL NAME	COMMON NAME	SIZE	COND.	TRP-1	TRP-2	TRP-3	TRP-4	TRP-5				TOTAL	REMARKS
DECIDUOUS TREES (UP TO 25' HT)													
ACER GINNALA	FLAME AMUR MAPLE	2" CAL.	B&B	0	0	0	0	0				0	
CRATAEGUS x LAVALLEI	LAVALLE HAWTHORN	2" CAL.	B&B	0	0	0	0	0				0	
CARPINUS JAPONICUS	JAPANESE HORNBEAM	2" CAL.	B&B	0	0	0	0	0				0	
FRAXINUS EXCELSIOR 'AUREAFOLIA'	GOLDEN DESERT ASH	2" CAL.	B&B	0	0	0	0	0				0	
PRUNUS VIRGINIANA	CHOKECHERRY	2" CAL.	B&B	0	1	1	0	0				2	SEE NOTES 1, 2, 3, 4, 5
PRUNUS EMARGINATA	BITTERCHERRY	2" CAL.	B&B	3	0	0	0	2				5	SEE NOTES 1, 2, 3, 4, 5
CRATAEGUS DOUGLASII	BLACK HAWTHORN	2" CAL.	B&B	11	0	0	0	0				11	SEE NOTES 1, 2, 3, 4, 5
EVERGREEN TREES (UP TO 20' HT)													
PICEA PUNGENS 'SESTER DWARF'	SESTER BLUE DWARF COLORADO SPRUCE	6' HT. MIN.	B&B	0	0	0	0	2				2	SEE NOTES 1, 2, 3, 4, 5
PICEA ABIES 'CUPRESSINA'	COLUMNAR NORWAY SPRUCE	6' HT. MIN.	B&B	0	0	0	11	0				11	SEE NOTES 1, 2, 3, 4, 5
JUNIPERUS CHINENSIS 'BLUE POINT'	BLUE POINT JUNIPER	6' HT. MIN.	B&B	0	0	1	0	0				1	SEE NOTES 1, 2, 3, 4, 5
TOTAL				14	1	2	11	4				32	

BOTANICAL NAME	COMMON NAME	SIZE	COND.	TRP-6	TRP-7	TRP-8	TRP-9	TRP-10	TRP-11	TRP-12	TOTAL	REMARKS
DECIDUOUS TREES (UP TO 20' HT)												
ACER GINNALA	FLAME AMUR MAPLE	2" CAL.	B&B	0	0	4	3	1	0	0	8	SEE NOTES 1, 2, 3, 4, 5
CRATAEGUS x LAVALLEI	LAVALLE HAWTHORN	2" CAL.	B&B	0	0	0	0	0	2	0	2	SEE NOTES 1, 2, 3, 4, 5
CARPINUS JAPONICUS	JAPANESE HORNBEAM	2" CAL.	B&B	4	3	3	0	0	0	0	10	SEE NOTES 1, 2, 3, 4, 5
FRAXINUS EXCELSIOR 'AUREAFOLIA'	GOLDEN DESERT ASH	2" CAL.	B&B	0	0	0	0	1	1	0	2	SEE NOTES 1, 2, 3, 4, 5
PRUNUS VIRGINIANA	CHOKECHERRY	2" CAL.	B&B	0	0	0	0	0	0	0	0	
PRUNUS EMARGINATA	BITTERCHERRY	2" CAL.	B&B	0	0	0	0	0	0	2	2	SEE NOTES 1, 2, 3, 4, 5
CRATAEGUS DOUGLASII	BLACK HAWTHORN	2" CAL.	B&B	0	0	0	0	0	0	0	0	
EVERGREEN TREES (UP TO 20' HT)												
PICEA PUNGENS 'SESTER DWARF'	SESTER BLUE DWARF COLORADO SPRUCE	6' HT. MIN.	B&B	0	0	0	0	1	1	0	2	SEE NOTES 1, 2, 3, 4, 5
PICEA ABIES 'CUPRESSINA'	COLUMNAR NORWAY SPRUCE	6' HT. MIN.	B&B	0	0	0	0	0	0	0	0	
JUNIPERUS CHINENSIS 'BLUE POINT'	BLUE POINT JUNIPER	6' HT. MIN.	B&B	0	0	0	0	0	0	0	0	
TOTAL				4	3	7	3	3	4	2	26	

TREE SCHEDULE NOTES:

1. FULL AND WELL BRANCHED, SINGLE TRUNK
2. INSTALL REPLACEMENT TREES APPROXIMATELY 4 FEET FROM CENTER OF REMOVED TREE STUMP. FIELD ADJUST IF NECESSARY TO AVOID UTILITIES, SIDEWALKS, CURBS AND POLES. SEE PLANTING DETAILS, SHEET NDT4.
3. INSTALLED TREES SHALL NOT EXCEED 25' MATURE HT. IN WIRE ZONE.
4. PROVIDE TREE STAKE WITH FLEXIBLE ARBOR TIE (OR APPROVED EQUAL)
5. SEE TREE REPLACEMENT TABLE, SHEETS TRT-1 AND TRT-2 FOR EXISTING TREE IDENTIFICATION FOR REMOVAL AND REPLACEMENT

TREE REPLACEMENT CRITERIA: (FOR ALL TREES OUTSIDE CRITICAL AREAS)

CITY OF KIRKLAND: PROVIDE 1:1 REPLACEMENT RATIO FOR ALL TREES

CITY OF KIRKLAND TOTAL STREET TREES REMOVED (THIS SEGMENT): 58

CITY OF KIRKLAND STREET TREES PROVIDED (THIS SEGMENT): 58

STREET TREES SELECTED FROM CITY OF KIRKLAND
STREET TREE SELECTION LIST, DEPARTMENT OF PUBLIC
WORKS, 04/2016.

NATIVE TREES SELECTED FROM CITY OF KIRKLAND
PLANT LIST.

KNOW WHAT'S BELOW
CALL BEFORE YOU DIG
811
callbeforeyoudig.org

TREE SCHEDULE
NE 124TH STREET
FOR
PUGET SOUND ENERGY
CITY OF KIRKLAND, KING COUNTY, WASHINGTON

REVISIONS: APPD.

DATE: FEBRUARY, 2020
DESIGN: JGA
DRAWING: GSK
CHECKED: JGA
REVISION NUMBER:

SCALE: N/A

PROJECT NUMBER:
PSEN0000-0169

DRAWING FILE:

SHEET NO.

NDT-1
OF 23





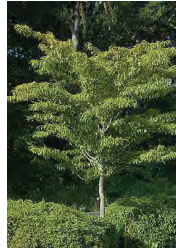
FLAME AMUR MAPLE (*ACER GINNALA* 'FLAME')

HEIGHT: 25'
 SPREAD: 15'-20'
 SHAPE: DENSE, ROUND,
 FOLIAGE: MEDIUM GREEN,
 FALL COLOR: BRILLIANT FIERY RED
 FLOWER: FRAGRANT, GREENISH YELLOW
 NOTES: DROUGHT TOLERANT



LAVALLE HAWTHORN (*CRATAEGUS* x *LAVALLEI*)

HEIGHT: 10'
 SPREAD: 8'
 SHAPE: UPRIGHT PYRAMIDAL
 FOLIAGE: DARK GREEN
 FALL COLOR: YELLOW
 FLOWER: WHITE
 NOTES: DROUGHT-TOLERANT, DISEASE RESISTANT



JAPANESE HORNBEAM (*CARPINUS* *JAPONICUS*)

HEIGHT: 20'
 SPREAD: 25'
 SHAPE: VASE SHAPE, BRANCHED WIDE
 SPREADING
 FOLIAGE: DARK GREEN, GLOSSY
 FALL COLOR: BRONZE
 FLOWER : WHITE, YELLOW
 NOTES: DROUGHT-TOLERANT



GOLDEN DESERT ASH (*FRAXINUS EXCELSIOR* 'AUREAFOLIA')

HEIGHT: 20'
 SPREAD: 18'
 SHAPE: ROUNDED, COMPACT
 FOLIAGE: GREENISH-YELLOW
 FALL COLOR: GOLDEN-YELLOW
 FLOWER: NONE
 NOTES: STREET TREE, REMARKABLE GOLD FOLIAGE



BITTERCHERRY (*PRUNUS EMARGINATA*)

HEIGHT: 25'
 SPREAD: 13'
 SHAPE: UPRIGHT BRANCHES
 FOLIAGE: GREEN
 FALL COLOR: YELLOW
 FLOWER: FRAGRANT, WHITE
 NOTES: DROUGHT-TOLERANT, REMARKABLE
 FLOWERING TREE



CHOCKECHERRY (*PRUNUS VIRGINIANA*)

HEIGHT: 25'
 SPREAD: 13'
 SHAPE: UPRIGHT BRANCHES
 FOLIAGE: GREEN
 FALL COLOR: YELLOW
 FLOWER: FRAGRANT, WHITE
 NOTES: DROUGHT-TOLERANT, REMARKABLE
 FLOWERING TREE



BLACK HAWTHORN (*CRATAEGUS DOUGLASII*)

HEIGHT: 25'
 SPREAD: 15'
 SHAPE: ROUNDED CROWN OF BRANCHES
 FOLIAGE: DENSE, GREEN LEAVES, SHARP
 THORNS
 FALL COLOR: YELLOW
 FLOWER: WHITE
 NOTES: DROUGHT TOLERANT, SHOWY RED
 EDIBLE FRUITS, ATTRACTS POLLENATORS



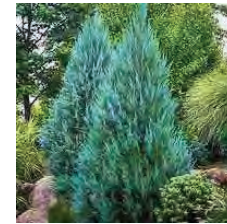
SESTER BLUE DWARF COLORADO SPRUCE (*PICEA* *PUNGENS* 'SESTER DWARF')

HEIGHT: 10'
 SPREAD: 6'
 SHAPE: UPRIGHT DENSE PYRAMIDAL
 FOLIAGE: BLUE GREEN
 NOTES:



COLUMNAR NORWAY SPRUCE (*PICEA ABIES* 'CUPRESSINA')

HEIGHT: FAST GROWER TO 20'
 SPREAD: 5'- 6'
 SHAPE: COLUMNAR
 FOLIAGE: DARK GREEN
 NOTES: ELEGANT COLUMNAR UNIFORM
 HABITAT, PERIMETER OR ACCENT TREE



BLUE POINT JUNIPER (*JUNIPERUS CHINENSIS* 'BLUE POINT')

HEIGHT: 12'
 SPREAD: 8'
 SHAPE: BROAD PYRAMIDAL
 FOLIAGE: GLOWING BLUE-GREEN
 NOTES: DROUGHT TOLERANT

KNOW WHAT'S BELOW
 CALL BEFORE YOU DIG
811
 callbeforeyoudig.org

Plot Date: 2/10/2020 11:53 AM By: Gregory King
Save Date: 2/10/2020 11:20 AM By: Gsk Title: P:\PSE\N000000\99\0400\CDLA\Drawn\2018-Kirkland Restoration Permits\TRP-SE2_L_NDT_pse-00000189.dwg

PLANTING NOTES

GENERAL

1 THE LANDSCAPING SHALL BE PRESERVED AND MAINTAINED IN SUBSTANTIAL CONFORMANCE WITH THE APPROVED SITE PLAN AND LANDSCAPE PLAN. PLANTINGS WHICH DIE SHALL BE REPLANTED WITHIN THIRTY DAYS, OR IF DURING THE WINTER, IN CONFORMANCE WITH THE WARRANTY REQUIREMENTS.

SITE PREPARATION

1. A PRECONSTRUCTION MEETING BETWEEN THE PSE REPRESENTATIVE, AND CONTRACTOR SHALL OCCUR PRIOR TO INSTALLATION.
2. INSTALL TEMPORARY EROSION AND SEDIMENT CONTROLS IN CONFORMANCE WITH THE PROJECT'S STORMWATER POLLUTION PREVENTION PLAN.
3. ALL EXISTING TREES TO BE REMOVED SHALL BE CUT AND REMOVED IN A MANNER THAT MINIMIZES DISTURBANCE TO EXISTING PLANTINGS AND LAWN TO THE GREATEST EXTENT PRACTICABLE. CONTRACTOR SHALL SUBMIT METHOD TO PSE REPRESENTATIVE FOR APPROVAL.

PLANTING GENERAL

1. ALL WORK SHALL BE PERFORMED BY PERSONS EXPERIENCED WITH THIS KIND OF WORK AND UNDER SUPERVISION OF QUALIFIED FOREMAN.
2. ALL PLANT MATERIALS SHALL CONFORM TO THE AMERICAN NURSERY LANDSCAPE ASSOCIATION (ANLA) STANDARDS FOR NURSERY STOCK (ANSI Z 60.1-2004) FOR GRADE AND SIZE UNLESS NOTED OTHERWISE ON PLAN.
3. SUBSTITUTIONS SHALL BE AUTHORIZED BY THE PSE REPRESENTATIVE. IF PLANTINGS ARE NOT AVAILABLE, CONTACT THE PSE REPRESENTATIVE FOR APPROVED SOURCES OR SUBSTITUTIONS.
4. PLANT MATERIALS SHALL BE INSPECTED AT THE NURSERY, OR PROJECT SITE, BY THE PSE REPRESENTATIVE PRIOR TO INSTALLATION. INSPECTION INCLUDES, BUT IS NOT LIMITED TO, BRANCHING, CROWN, HEALTH, VIGOR, AND ROOT STRUCTURE OF THE PLANT MATERIAL.

PLANTING INSTALLATION

1. ALL TREES SHALL BE INSTALLED AS SHOWN IN THE PLANS AND DETAILS.
2. PSE REPRESENTATIVE SHALL APPROVE THE METHOD AND LAYOUT OF TREES PRIOR TO INSTALLATION. FIELD-ADJUST TREES AS NECESSARY AROUND GRINDED STUMPS, LARGE ROCKS, EXISTING SHRUBS, CURBS, SIDEWALKS, DRIVEWAYS, POWER AND LIGHT POLES, UNDERGROUND UTILITIES.
3. BACKFILL TREE PITS WITH 2-WAY TOPSOIL MIXTURE CONSISTING OF 50% COMPOST AND 50% SAND BY VOLUME (CEDAR GROVE 2-WAY MIX OR APPROVED EQUAL) AND TOP DRESS WITH COMPOST MULCH. COMPOST MULCH SHALL MEET WASHINGTON STATE DEPARTMENT OF TRANSPORTATION SPECIFICATION 9-14.4(8) FOR COARSE COMPOST MULCH.
4. IN THE EVENT OF VARIATION BETWEEN THE PLANT SCHEDULE AND THE NUMBER OF PLANTS SHOWN ON THE PLANS, THE PLANS SHALL CONTROL.
5. THE CONTRACTOR SHALL VERIFY THAT PLANT INSTALLATION CONDITIONS ARE SUITABLE WITHIN PLANTING AREAS. THE CONTRACTOR SHALL NOTIFY PSE OF ANY UNSATISFACTORY CONDITIONS AND ADDRESS THEM PRIOR TO START OF PLANTING. BEGINNING OF WORK CONSTITUTES VERIFICATION THAT CONDITIONS ARE SATISFACTORY.

PLANTING INSTALLATION cont.

6. THE CONTRACTOR SHALL VERIFY THAT PLANT INSTALLATION CONDITIONS ARE SUITABLE WITHIN PLANTING AREAS. THE CONTRACTOR SHALL NOTIFY PSE OF ANY UNSATISFACTORY CONDITIONS AND ADDRESS THEM PRIOR TO START OF PLANTING. BEGINNING OF WORK CONSTITUTES VERIFICATION THAT CONDITIONS ARE SATISFACTORY.
7. HYDROSEED ALL DISTURBED LAWN AREAS WITH SPECIFIED SEED MIX (SEE BELOW). GRASSES SHALL CONFORM TO THE STANDARDS FOR "CERTIFIED " GRADE SEED OR BETTER AS OUTLINED IN THE WA STATE DEPARTMENT OF AGRICULTURE "RULES FOR SEED CERTIFICATION", LAST EDITION. ALL SEED INSTALLERS AND VENDORS MUST HAVE A BUSINESS LICENSE ISSUED BY WA STATE DEPARTMENT OF LICENSING WITH A "SEED DEALER" ENDORSEMENT. SEEDING SHALL OCCUR BETWEEN SEPTEMBER 1 AND OCTOBER 1. THE CONTRACTOR SHALL BE RESPONSIBLE TO ENSURE A HEALTHY STAND OF GRASS, OTHERWISE THE CONTRACTOR REAPPLY THE HYDROSEED AT NO ADDITIONAL COST. APPLY PER RATES SPECIFIED BELOW.

TURF LAWN HYDROSEED MIX

KIND/VARIETY	% BY WEIGHT	MIN. % GERM
PERENNIAL RYEGRASS	60%	90%
HARD FESCUE	20%	90%
KENTUCKY BLUEGRASS	20%	90%
APPLICATION RATE: _____ 5-6 LBS/ 1,000 S.F.		
CANFOR WOOD CELLULOSE ECO FIBER MULCH: _____ 1,000 LBS/ACRE		
NUTRICULTURE SEED STARTER FERTILIZER (16-45-7): _____ 200 LBS/ACRE		
CANFOR ECO-TAC GUAR TACKIFIER: _____ 60 LBS/ACRE		

WARRANTY

1. THE CONTRACTOR SHALL WARRANT ALL MATERIALS AND WORKMANSHIP FOR A PERIOD OF TWO YEARS FROM FINAL ACCEPTANCE. THE CONTRACTOR IS RESPONSIBLE FOR ALL PLANTINGS AND MATERIALS DURING INSTALLATION AND THE WARRANTY PERIOD.
2. CONTRACTOR SHALL WARRANT ALL PLANT MATERIALS TO REMAIN ALIVE AND HEALTHY DURING THIS PERIOD. THE CONTRACTOR SHALL REPLACE ALL DEAD OR UNHEALTHY PLANTINGS, PER PLANS AND AS IDENTIFIED BY THE PSE REPRESENTATIVE AT THE TWO YEAR WARRANTY INSPECTION.

MAINTENANCE

1. THE CONTRACTOR IS RESPONSIBLE FOR LANDSCAPE MAINTENANCE FROM FINAL ACCEPTANCE THROUGH THE TWO YEAR WARRANTY PERIOD.
2. MAINTENANCE SHALL INCLUDE: WATERING, RE-SETTLING, AND STAKING OF UNSTABLE PLANTINGS INCLUDING PLANTINGS THAT HAVE BEEN BLOWN OVER, TO ASSURE HEALTHY PLANT GROWTH THROUGHOUT THE WARRANTY PERIOD.
3. ALL PLANTINGS THAT ARE NOT INSTALLED IN AREAS WITH EXISTING IRRIGATION SHALL BE MANUALLY IRRIGATED BY THE CONTRACTOR (E.G., WITH A WATER TRUCK OR IRRIGATION BAGS) DURING INSTALLATION AND THE TWO YEAR WARRANTY PERIOD. IRRIGATION SHALL OCCUR AT A MINIMUM RATE OF ONE INCH OF WATER PER WEEK DURING THE FIRST AND SECOND GROWING SEASON (MAY 15 TO OCTOBER 15).

KNOW WHAT'S BELOW
CALL BEFORE YOU DIG
811
callbeforeyoudig.org

PLANTING NOTES
NE 124TH STREET
FOR
PUGET SOUND ENERGY
CITY OF KIRKLAND, KING COUNTY, WASHINGTON

**DAVID EVANS
AND ASSOCIATES INC.**
415 - 118th Avenue SE
Bellevue, Washington 98006
Phone: 425.519.9500



REVISIONS: APPD.

DATE: FEBRUARY, 2020
DESIGN: JCGA
DRAWN: GSK
CHECKED: JCGA
REVISION NUMBER:

SCALE: N/A

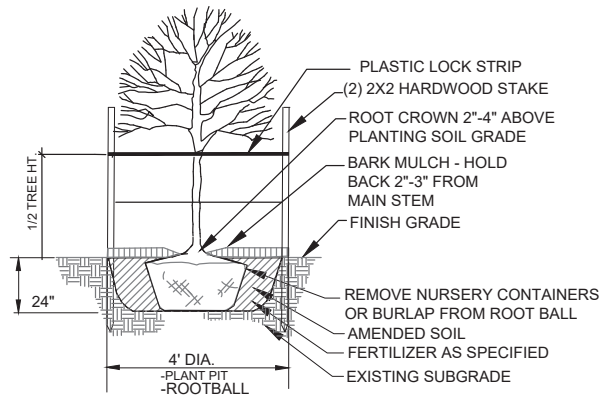
PROJECT NUMBER:
PSEN0000-0169

DRAWING FILE:

SHEET NO.

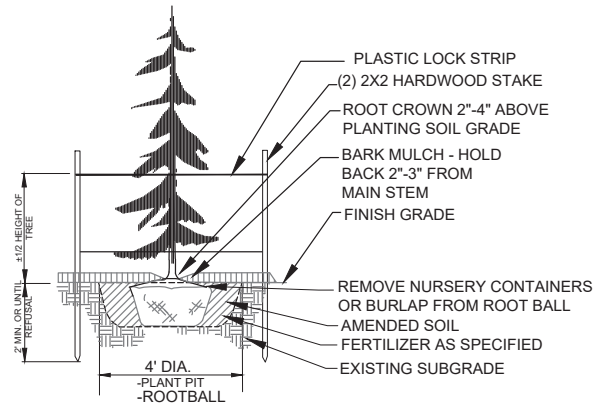
NDT- 3
OF 23





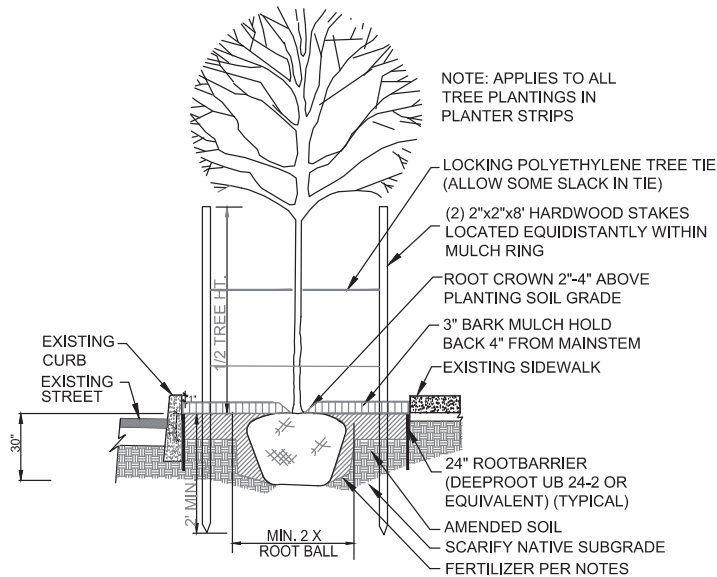
DECIDUOUS TREE PLANTING

NOT TO SCALE



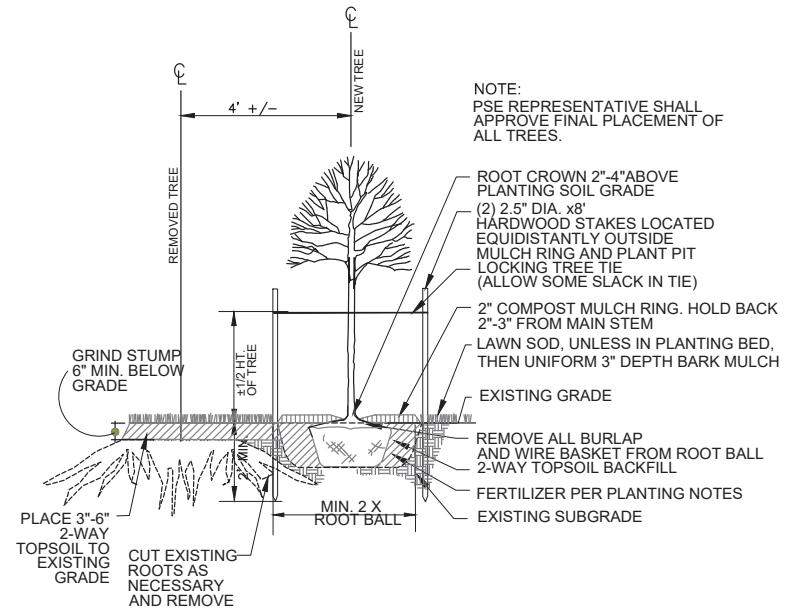
CONIFEROUS TREE PLANTING

NOT TO SCALE



PLANTER STRIP TREE PLANTING PREPARATION

NOT TO SCALE



TREE REPLACEMENT DETAIL

NOT TO SCALE

KNOW WHAT'S BELOW
CALL BEFORE YOU DIG
811
callbeforeyoudig.org

PSE **PUGET SOUND ENERGY**
The Energy To Do Great Things

PLANTING DETAILS
NE 124TH STREET
FOR
PUGET SOUND ENERGY
CITY OF KIRKLAND, KING COUNTY, WASHINGTON

DAVID EVANS
AND ASSOCIATES INC.
415 - 118th Avenue SE
Bellevue, WA 98006
Phone: 425.519.9500



REVISIONS: APPD.

DATE: FEBRUARY, 2020
DESIGN: JOGA
DRAWN: GSK
CHECKED: JOGA
REVISION NUMBER:

SCALE:

PROJECT NUMBER:

PSEN0000-0169

DRAWING FILE:

SHEET NO.

NDT- 4

OF 23

KNOW WHAT'S BELOW
 CALL BEFORE YOU DIG
811
 callbeforeyoudig.org

TREE REPLACEMENT TABLE

TAG NUMBER	SCIENTIFIC NAME	COMMON NAME	TREE DIA.	TREE HEALTH	MAPBOOK PAGE	REPLACEMENT TREE
416	PINUS CONTORTA	LODGEPOLE PINE	9	LEVEL 4	13	COLUMNAR NORWAY SPRUCE
417	PINUS CONTORTA	LODGEPOLE PINE	8	LEVEL 4	13	COLUMNAR NORWAY SPRUCE
418	PINUS CONTORTA	LODGEPOLE PINE	8	LEVEL 4	13	COLUMNAR NORWAY SPRUCE
419	PINUS CONTORTA	LODGEPOLE PINE	10	LEVEL 3	13	COLUMNAR NORWAY SPRUCE
420	PINUS CONTORTA	LODGEPOLE PINE	15	LEVEL 4	13	COLUMNAR NORWAY SPRUCE
421	PINUS CONTORTA	LODGEPOLE PINE	12	LEVEL 3	13	COLUMNAR NORWAY SPRUCE
422	PINUS CONTORTA	LODGEPOLE PINE	18	LEVEL 3	13	COLUMNAR NORWAY SPRUCE
423	PINUS CONTORTA	LODGEPOLE PINE	15	LEVEL 3	13	COLUMNAR NORWAY SPRUCE
424	PINUS CONTORTA	LODGEPOLE PINE	15	LEVEL 2	13	COLUMNAR NORWAY SPRUCE
425	PINUS CONTORTA	LODGEPOLE PINE	12	LEVEL 1	13	COLUMNAR NORWAY SPRUCE
426	PINUS CONTORTA	LODGEPOLE PINE	11	LEVEL 1	13	COLUMNAR NORWAY SPRUCE
586	ACER MACROPHYLLUM	BIG-LEAF MAPLE	7+7+9	LEVEL 4	18	BITTERCHERRY
587	THUJA PLICATA	WESTERN RED CEDAR	5+13+11	LEVEL 4	18	SESTER BLUE DWARF COLORADO SPRUCE
588	THUJA PLICATA	WESTERN RED CEDAR	5+14+12	LEVEL 4	18	SESTER BLUE DWARF COLORADO SPRUCE
589	ACER MACROPHYLLUM	BIG-LEAF MAPLE	6+6	LEVEL 4	18	BITTERCHERRY
1104	ALNUS RUBRA	RED ALDER	10+11+12	LEVEL 4	11	CHOKECHERRY
1105	ACER MACROPHYLLUM	BIG-LEAF MAPLE	20	LEVEL 4	11	BITTERCHERRY
1106	POPULUS TRICOCARPA	BLACK COTTONWOOD	20	LEVEL 4	11	BLACK HAWTHORN
1107	POPULUS TRICOCARPA	BLACK COTTONWOOD	32	LEVEL 4	11	BLACK HAWTHORN
1108	POPULUS TRICOCARPA	BLACK COTTONWOOD	15	LEVEL 4	11	BLACK HAWTHORN
1109	POPULUS TRICOCARPA	BLACK COTTONWOOD	11	LEVEL 4	11	BLACK HAWTHORN
1110	POPULUS TRICOCARPA	BLACK COTTONWOOD	15	LEVEL 4	11	BLACK HAWTHORN
1111	ACER MACROPHYLLUM	BIG-LEAF MAPLE	10	LEVEL 4	11	BITTERCHERRY
1112	ACER MACROPHYLLUM	BIG-LEAF MAPLE	9	LEVEL 4	11	BITTERCHERRY
1113	POPULUS TRICOCARPA	BLACK COTTONWOOD	6+6	LEVEL 4	11	BLACK HAWTHORN
1114	POPULUS TRICOCARPA	BLACK COTTONWOOD	17	LEVEL 4	11	BLACK HAWTHORN
1115	POPULUS TRICOCARPA	BLACK COTTONWOOD	12	LEVEL 4	11	BLACK HAWTHORN
1116	POPULUS TRICOCARPA	BLACK COTTONWOOD	9+9	LEVEL 4	11	BLACK HAWTHORN
1117	POPULUS TRICOCARPA	BLACK COTTONWOOD	9	LEVEL 4	11	BLACK HAWTHORN
1118	POPULUS TRICOCARPA	BLACK COTTONWOOD	16	LEVEL 4	11	BLACK HAWTHORN
1185	THUJA PLICATA	WESTERN RED CEDAR	14	LEVEL 4	12	BLUE POINT JUNIPER
1187	ALNUS RUBRA	RED ALDER	11	LEVEL 3	12	CHOKECHERRY

TREE HEALTH KEY

LEVEL 4 - HEALTHY, NO OBVIOUS SIGNS OF MAJOR DEFECT, GENERALLY SOUND TRUNK AND BRANCH STRUCTURE

LEVEL 3 - HEALTHY, BUT SOMEWHAT COMPROMISED TRUNK OR BRANCH STRUCTURE DUE TO DEFECT (e.g. CODOMINANT STEMS) OR PREVIOUS PRUNING

LEVEL 2 - TREE IS STILL ALIVE BUT EITHER IN DECLINE OR HAS SIGNIFICANT STRUCTURAL DEFECT

LEVEL 1 - TREE IS EITHER DEAD OR CLOSE TO IT

NOTE:

1. TREE DIAMETER (DIA.) IS IN INCHES



REVISIONS: APPD.

DATE: FEBRUARY, 2020
 DESIGN: JCGA
 DRAWING: GSK
 CHECKED: JCGA
 REVISION NUMBER:

SCALE: N/A

PROJECT NUMBER:
 PSEN0000-0169

DRAWING FILE:
 laEM16psen00000169.dwg

SHEET NO.

TRT-1
 of 23

TREE REPLACEMENT TABLE

TAG NUMBER	SCIENTIFIC NAME	COMMON NAME	TREE DIA.	TREE HEALTH	MAPBOOK PAGE	REPLACEMENT TREE
1178	ACER MACROPHYLLUM	BIG-LEAF MAPLE	17	LEVEL 3	24	BITTER CHERRY
1179	ACER MACROPHYLLUM	BIG-LEAF MAPLE	19	LEVEL 3	24	BITTER CHERRY
1-450	ROBINA PSEUDOACACIA	BLACK LOCUST	19	LEVEL 4	21	LAVALLE HAWTHORN
1-451	ROBINA PSEUDOACACIA	BLACK LOCUST	8	LEVEL 4	21	LAVALLE HAWTHORN
1-453	THUJA PLICATA	WESTERN RED CEDAR	50	LEVEL 4	21	SESTER BLUE DWARF COLORADO SPRUCE
1-454	FRAXINUS SP.	ASH	7	LEVEL 4	21	GOLDEN DESERT ASH
1-455	THUJA PLICATA	WESTERN RED CEDAR	33	LEVEL 4	21	SESTER BLUE DWARF COLORADO SPRUCE
1-456	FRAXINUS SP.	ASH	21	LEVEL 4	21	GOLDEN DESERT ASH
1-457	ACER SP.	MAPLE	7	LEVEL 4	21	FLAME AMUR MAPLE
1-473	ACER SP.	MAPLE	13	LEVEL 4	20	FLAME AMUR MAPLE
1-474	ACER SP.	MAPLE	13	LEVEL 4	20	FLAME AMUR MAPLE
1-475	ACER SP.	MAPLE	12	LEVEL 4	20	FLAME AMUR MAPLE
1-476	ACER SP.	MAPLE	13	LEVEL 4	20	FLAME AMUR MAPLE
1-477	ACER SP.	MAPLE	14	LEVEL 4	20	FLAME AMUR MAPLE
1-478	ACER SP.	MAPLE	10	LEVEL 4	20	FLAME AMUR MAPLE
1-479	ACER SP.	MAPLE	16	LEVEL 4	20	FLAME AMUR MAPLE
1-482	A. PLATANUS	LONDON PLANE	17	LEVEL 4	20	JAPANESE HORNBEAM
1-483	A. PLATANUS	LONDON PLANE	13	LEVEL 4	20	JAPANESE HORNBEAM
1-484	A. PLATANUS	LONDON PLANE	17	LEVEL 4	20	JAPANESE HORNBEAM
1-485	A. PLATANUS	LONDON PLANE	15	LEVEL 4	20	JAPANESE HORNBEAM
1-486	A. PLATANUS	LONDON PLANE	15	LEVEL 4	20	JAPANESE HORNBEAM
1-487	A. PLATANUS	LONDON PLANE	18	LEVEL 4	20	JAPANESE HORNBEAM
1-488	A. PLATANUS	LONDON PLANE	13	LEVEL 4	20	JAPANESE HORNBEAM
1-489	A. PLATANUS	LONDON PLANE	16	LEVEL 4	20	JAPANESE HORNBEAM
1-490	A. PLATANUS	LONDON PLANE	18	LEVEL 4	20	JAPANESE HORNBEAM
1-491	A. PLATANUS	LONDON PLANE	22	LEVEL 4	20	JAPANESE HORNBEAM

TREE HEALTH KEY

LEVEL 4 - HEALTHY, NO OBVIOUS SIGNS OF MAJOR DEFECT, GENERALLY SOUND TRUNK AND BRANCH STRUCTURE

LEVEL 3 - HEALTHY, BUT SOMEWHAT COMPROMISED TRUNK OR BRANCH STRUCTURE DUE TO DEFECT (e.g. CODOMINANT STEMS) OR PREVIOUS PRUNING

LEVEL 2 - TREE IS STILL ALIVE BUT EITHER IN DECLINE OR HAS SIGNIFICANT STRUCTURAL DEFECT

LEVEL 1 - TREE IS EITHER DEAD OR CLOSE TO IT

NOTE:

1. TREE DIAMETER (DIA.) IS IN INCHES

KNOW WHAT'S BELOW
CALL BEFORE YOU DIG
811
callbeforeyoudig.org