

7. References

- AECOM. 2020a. Puget Sound Energy Sammamish-Juanita Transmission Line Critical Areas Impact Assessment. Prepared for Puget Sound Energy by AECOM, Seattle, Washington.
- AECOM. 2020b. Puget Sound Energy Sammamish-Juanita Transmission Line Project Wetland and Stream Delineation Report. Prepared for Puget Sound Energy by AECOM, Seattle, Washington.
- Cowardin, L.M., V. Carter, F.C. Golet, and E.T. LaRoe. 1979. Classification of Wetlands and Deepwater Habitats of the United States. Performed for the U.S. Department of the Interior Fish and Wildlife Service Office of Biological Services. Washington, D.C.
- City of Kirkland. 2017. Kirkland Zoning Code Chapter 90, as amended by Ordinance 4551. Available at: <http://www.codepublishing.com/WA/Kirkland/>. Accessed on March 10, 2017.
- Habitat Bank, LLC.. 2018. Mitigation Banking Instrument: Keller Farm Mitigation Bank. December 2018. Available at: <https://fortress.wa.gov/ecy/ezshare/sea/MitigationBanking/Keller/KellerFarmPNMBI.pdf>. Accessed on December 13, 2019.
- HDR. 2020. Conceptual Mitigation Plan, Sammamish-Juanita Transmission Line Project. Prepared for PSE by HDR, Bellevue, Washington. January 2020.
- Hemery, G.E., P.S. Savill and S.N. Pryor. 2005. "Applications of the crown diameter – stem diameter relationship for different species of broadleaved trees" In: *Forest Ecology and Management* 215:285-294.
- Hruby, T. 2014. Washington State Wetland Rating System for Western Washington: 2014 Update (Publication #14-06-029). Washington Department of Ecology. Olympia, Washington.
- King County. 2017. Title 21A Zoning. Updated January 17, 2017. Available at: http://www.kingcounty.gov/council/legislation/kc_code/24_30_Title_21A.aspx. Accessed on March 10, 2017.
- Pretzsch, H., P. Biber, E. Uhl, J. Dahlhausen, T. Rötzer, J. Caldentey, T. Koike, T. van Con, A. Chavanne, T. Seifert, B. du Toit, C. Farnden, and S. Pauleit. 2015. "Crown size and growing space requirement of common tree species in urban centres, parks, and forests" In: *Urban Forestry & Urban Greening* 14:466-479.

June 16, 2021

Jennifer Anderer
City of Kirkland Planning Department
123 5th Avenue
Kirkland, WA 98033

Re: Kirkland PSE Transmission Line 2nd Impact and Mitigation Peer Review

The Watershed Company Reference Number: 170622.93

Dear Jennifer:

This letter represents our second peer review of the proposed impacts and mitigation for the Puget Sound Energy (PSE) Sammamish-Juanita transmission line construction project. Our initial impact and mitigation peer review was summarized in the *Kirkland PSE Transmission Line* (The Watershed Company. 9/4/2020) (mitigation peer review). The mitigation peer review incorporated comments from the prior *PSE Transmission Line, Confirmation of Wetland and Stream Boundaries – Peer Review Letter* (The Watershed Company. January 28, 2019) (delineation peer review). The comments and recommendations from that letter have been addressed and summarized in the *Revision of Sammamish-Juanita Transmission Line Documents in response to City of Kirkland Comments* (AECOM. 3/1/2021) (comment response letter) and supporting documents and plans listed below.

- *Puget Sound Energy Sammamish-Juanita Transmission Line Critical Areas Impact Assessment Final* (AECOM. February 2021) (Revised Impact Assessment)
- *Puget Sound Energy Sammamish-Juanita Transmission Line Project Wetland and Stream Delineation Report Revised Final* (AECOM. Revised February 2021) (Revised Delineation Report)
- *Puget Sound Energy Sammamish-Juanita Transmission Line Wetland Mitigation Bank Use Plan* (AECOM. Revised February 2021) (Revised Bank Use Plan)

Peer Review Recommendation Summary

The following recommendations were provided in the peer reviews. The applicant's response to each comment follows in italicized font.

- Comment: Reclassify Wetland K-J as a Category II wetland, and reassess the required compensatory mitigation for five square feet of wetland fill.

Applicant Response: *In our responses to the January 28 peer review memo and the SEPA comments, AECOM recommended accepting the suggested classification for the reasons stated in the January 28 memo. The Delineation Report, Impact Assessment Report, and Bank Use Plan have been updated accordingly.*

After a review of the Bank Use Plan and a recalculation of the amount of compensatory mitigation needed based on mitigation credit ratios recommended in the Keller Farm Mitigation Bank Instrument, AECOM has determined that there is no change needed to the amount of bank credit needed. Because the smallest increment for mitigation bank credits is 0.001 acre, and given the small permanent wetland impact area in Wetland K-J (5 square feet), there is no change in the calculated bank credit need. The bank credit needed for permanent wetland impacts remains 0.002 credit and the total bank credit needed remains 0.045 credit.

Additional Comment: Our comment has been sufficiently addressed. The Wetland K-J classification has been revised, but the change does not result in additional mitigation requirements. We have no further comment regarding this issue.

- Comment: Reclassify Stream K-6 as Type F, and revise the buffer width to 100 feet.

Applicant Response: *In our responses to the January 28 peer review memo and the SEPA comments, AECOM recommended accepting the suggested classification for the reasons stated in the January 28 memo. The Delineation Report, Impact Assessment Report, and Bank Use Plan have been updated accordingly.*

Additional Comment: Our comment has been sufficiently addressed. We have no further comment regarding this issue.

- Comment: Reassess any permanent buffer loss, temporary buffer impacts, and forested buffer conversion associated with the larger Stream K-6 buffer. Revise the proposed restoration and compensatory mitigation associated with the larger buffer.

Applicant Response: As stated in AECOM's March 13 response letter, because the buffers of Stream K-6 were truncated to the limits of the adjacent rail ballast and paved areas, changing the classification to Type F and expanding the standard buffer from 50 feet to 100 feet will not change the impact assessment for this project. The only location where the buffer for Stream K-6 has changed is a slight extension of the buffer's southeast edge, which is outside the delineation study area and the project impact area. AECOM does not confirm the statement that "several transmission poles would be located within the 100-foot buffer that are not currently addressed as buffer impacts." Pole 3/2 will remain the only pole located in the buffer; impacts associated with this pole were documented in the February 2020 version of the Impact Assessment Report. Consequently, no adjustments to mitigation credits and impact restoration areas are needed.

Additional Comment: The classification of Stream K-6 has been updated in the Revised Delineation Report. For clarity, Paragraph 3 on Page 2-15 of the Revised Impact

Assessment states: "Poles 3/1, 3/2, and 3/3 will be located just outside the buffer. Poles 3/1 and 3/2 will be located at the edge of the buffer adjacent to a paved storage area for the business to the south. Pole 3/3 will be located directly adjacent to the paved trail entrance in an area covered with grass and gravel where Stream K-6 is located within a pipe." The statement is ambiguous as to which poles are actually outside the vegetated buffer, as it notes that Poles 3/1 and 3/2 are outside the buffer, while also stating that they are at the edge of the buffer adjacent to the paved areas. Table 3 of the Revised Impacts Assessment quantifies only Pole 3/2 as a buffer impact. A review of the project plans overlaid onto aerial photographs suggest that Poles 3/1 and 3/3 will be in existing impervious areas. Based on the applicant response above, it appears that the quoted text is a typographical error. Since Pole 3/2 is the only vegetated buffer impact. We have no further comment regarding this issue.

All of our comments and recommendations have been sufficiently addressed. We have no additional comments regarding this application. Please contact us with any additional questions or concerns.

Sincerely,

Ryan Kahlo, PWS
Senior Ecologist



CITY OF KIRKLAND ARBORIST ASSESSMENT

Subject: PSE Sammamish – Juanita Tree Inventory and Health Assessment

Prepared By: Brett Conrad, ISA Certified Arborist #PN-2002A

Date: January 29, 2020

Tree Inventory Methods

In order to inventory the existing trees along the project route PSE contracted with a qualified consultant to tag and identify the species and size of each tree within the proposed corridor. Each tree was tagged and located through survey to be included on the project site plans. A PSE certified arborist assessed tree health through a Level 1 limited visual risk assessment per ANSI A300, Part 9, 2017. A numerical value was assigned to each tree to represent tree health based on the following scale:

- a. Level 4 – Healthy, no obvious signs of major defect, generally sound trunk and branch structure
- b. Level 3 – Healthy, but somewhat compromised trunk or branch structure due to defect (e.g. co-dominant stems) or previous pruning
- c. Level 2 – Tree is still alive but either in decline or has significant structural defect
- d. Level 1 – Tree is either dead or close to it

Tree Assessment and Mitigation

A total of 292 trees have been identified for removal along the project route in the City of Kirkland. Eighty – two (82) of those trees are located within the Cross Kirkland Corridor (CKC) trail corridor that PSE will share for the transmission line, 47 are in the street right-of-way or public property other than the CKC, one tree is located on property owned by King County, 11 trees are located on property owned by PSE, 41 trees are located on private property, and 109 are located within the I-405 right-of-way managed by WSDOT. Tree identification, health, location, and mitigation proposed is outlined in the table below. PSE will be mitigating for tree removal through different means depending upon location:

- 1 = Replace onsite on private property: Transmission compatible tree replacement to be determined through discussions with property owner (compliant with KZC).
- 2- = Replace onsite in street right-of-way, on PSE owned property, or City of Kirkland owned property other than the CKC: See proposed replacement in Tree Restoration Plan: NE 124th Street.
- 3 = CKC Fee In Lieu: For tree removal located within the CKC, PSE will pay an agreed upon fee to the City of Kirkland and the City of Kirkland will replant the trees in the corridor upon implementation of the CKC Trail Master Plan.
- 4 = Mitigation Bank: For trees on private property located within wetlands or buffers, PSE will mitigation for tree removal through purchasing credits at an approved mitigation bank in compliance with the KZC as outlined in the Critical Areas Impact Assessment.
- 5 = WSDOT Mitigation: Tree replacement in WSDOT ROW is part of the Tree Restoration Plan: 120th Ave NE that will be reviewed by WSDOT under the state Utility Permit.

Table 1 summarizes the significant trees inventoried in the City of Kirkland, including their size, location, health, and proposed mitigation where applicable.

Table 1: City of Kirkland Tree Inventory

Tree ID	Scientific Name	Common Name	DBH	Remove or Trim	Health	Location	Mitigation
Map 11							
1120	Acer macrophyllum	Big-leaf Maple	18"	remove	4	Private property	1
1119	Acer macrophyllum	Big-leaf Maple	18"	remove	3	Private property	1
1118	Populus trichocarpa	Black Cottonwood	13"	remove	4	Street ROW	2
1117	Populus trichocarpa	Black Cottonwood	16"	remove	4	Street ROW	2
1116	Populus trichocarpa	Black Cottonwood	9"	remove	4	Street ROW	2
1115	Populus trichocarpa	Black Cottonwood	9", 9"	remove	4	Street ROW	2
1114	Populus trichocarpa	Black Cottonwood	12"	remove	4	Street ROW	2
1113	Populus trichocarpa	Black Cottonwood	17"	remove	4	Street ROW	2
1112	Acer macrophyllum	Big-leaf Maple	6", 6"	remove	4	Street ROW	2
1111	Acer macrophyllum	Big-leaf Maple	9"	remove	4	Street ROW	2
1110	Populus trichocarpa	Black Cottonwood	10"	remove	4	Street ROW	2
1109	Populus trichocarpa	Black Cottonwood	15"	remove	4	Street ROW	2
1108	Populus trichocarpa	Black Cottonwood	11"	remove	4	Street ROW	2
1107	Populus trichocarpa	Black Cottonwood	15"	remove	4	Street ROW	2
1106	Populus trichocarpa	Black Cottonwood	32"	remove	4	Street ROW	2

1105	Acer macrophyllum	Big-leaf Maple	20"	remove	4	Street ROW	2
1104	Alnus rubra	Red Alder	10", 11", 12"	remove	4	Street ROW	2
Map 12							
1186	Pseudotsuga menziesii	Douglas Fir	14"	remove	4	buffer/Street ROW	4
1185	Thuja plicata	Western Redcedar	14"	remove	4	Street ROW	2
1187	Alnus rubra	Red alder	11"	remove	3	Street ROW	2
Map 13							
426	Pinus contorta	Lodgepole Pine	11"	remove	1	PSE sub property	2
425	Pinus contorta	Lodgepole Pine	12"	remove	1	PSE sub property	2
424	Pinus contorta	Lodgepole Pine	15"	remove	2	PSE sub property	2
423	Pinus contorta	Lodgepole Pine	15"	remove	3	PSE sub property	2
422	Pinus contorta	Lodgepole Pine	18"	remove	3	PSE sub property	2
421	Pinus contorta	Lodgepole Pine	12"	remove	3	PSE sub property	2
420	Pinus contorta	Lodgepole Pine	15"	remove	4	PSE sub property	2
419	Pinus contorta	Lodgepole Pine	10"	remove	3	PSE sub property	2
418	Pinus contorta	Lodgepole Pine	8"	remove	4	PSE sub property	2
417	Pinus contorta	Lodgepole Pine	8"	remove	4	PSE sub property	2
416	Pinus contorta	Lodgepole Pine	9"	remove	4	PSE sub property	2
Map 14							

1199	Alnus rubra	Red Alder	12"	remove	3	ERC/wetland	4
Map 15							
274	Populus trichocarpa	Black Cottonwood	10"	remove	4	CKC/wetland	3
275	Populus trichocarpa	Black Cottonwood	28"	remove	4	CKC/buffer	3
276	Thuja plicata	Western Red-cedar	8"	remove	4	CKC/wetland	3
277	Populus trichocarpa	Black Cottonwood	30', 6"	remove	4	CKC/buffer	3
278	Populus trichocarpa	Black Cottonwood	26"	remove	4	CKC/buffer	3
279	Populus trichocarpa	Black Cottonwood	6"	remove	4	CKC/buffer	3
280	Populus trichocarpa	Black Cottonwood	22"	remove	4	CKC/buffer	3
281	Populus trichocarpa	Black Cottonwood	25"	remove	4	CKC/buffer	3
282	Alnus rubra	Red Alder	13"	remove	2	CKC/buffer	3
283	Alnus rubra	Red Alder	16"	remove	2	CKC/buffer	3
284	Alnus rubra	Red Alder	4"	remove	2	CK/ buffer	3
285	Alnus rubra	Red Alder	8"	remove	2	CKC/buffer	3
286	Alnus rubra	Red Alder	6", 5"	remove	2	CKC/buffer	3
287	Alnus rubra	Red Alder	7"	remove	2	CKC//buffer	3
288	Alnus rubra	Red Alder	10"	remove	2	CKC/buffer	3
289	Alnus rubra	Red Alder	8", 8"	remove	2	CKC/buffer	3
290	Alnus rubra	Red Alder	8", 8", 4"	remove	2	CKC/buffer	3

291	Alnus rubra	Red Alder	7"	remove	2	CKC/buffer	3
292	Alnus rubra	Red Alder	12"	remove	2	CKC/buffer	3
293	Alnus rubra	Red Alder	14"	remove	2	CKC/buffer	3
294	Populus trichocarpa	Black Cottonwood	8"	remove	4	CKC/wetland	3
295	Populus trichocarpa	Black Cottonwood	6"	remove	4	CKC/wetland	3
296	Populus trichocarpa	Black Cottonwood	6"	remove	4	CKC/wetland	3
297	Populus trichocarpa	Black Cottonwood	10"	remove	4	CKC/buffer	3
298	Populus trichocarpa	Black Cottonwood	19"	remove	4	CKC/buffer	3
299	Populus trichocarpa	Black Cottonwood	30"	remove	4	CKC/buffer	3
300	Populus trichocarpa	Black Cottonwood	32"	remove	4	CKC/buffer	3
301	Alnus rubra	Red Alder	9"	remove	4	CKC/buffer	3
1-438	Salix scouleriana	Scouler's Willow	8"	remove	3	CKC/buffer	3
303	Alnus rubra	Red Alder	16" (snag)	remove	3	CKC/buffer	3
304	Alnus rubra	Red Alder	10" (snag)	remove	1	CKC/buffer	3
317	Salix lasiandra	Pacific Willow	10"	remove	3	CKC/wetland	3
318	Salix lasiandra	Pacific Willow	7"	remove	3	CKC/wetland	3
319	Salix scouleriana	Scouler's Willow	6"	remove	1	CKC/wetland	3
305	Crataegus monogyna	English Hawthorn	9"	remove	3	CKC/wetland	3
306	Alnus rubra	Red Alder	12"	trim	3	CKC/wetland	n/a
308	Salix lasiandra	Pacific Willow	8"	trim	3	CKC/wetland	n/a

309	Alnus rubra	Red Alder	11", 11", 10"	trim	3	CKC/wetland	n/a
310	Alnus rubra	Red Alder	8", 8"	trim	4	CKC/wetland	n/a
316	Populus trichocarpa	Black Cottonwood	11"	remove	4	CKC/wetland	3
Map 16							
311	Alnus rubra	Red Alder	7"	remove	3	CKC/wetland	3
312	Alnus rubra	Red Alder	7"	remove	3	CKC/wetland	3
313	Alnus rubra	Red Alder	11"	remove	3	CKC/wetland	3
314	Alnus rubra	Red Alder	10"	remove	3	CKC/buffer	3
1121	Populus trichocarpa	Black Cottonwood	10"	remove	4	CKC/wetland	3
1122	Alnus rubra	Red Alder	13"	remove	4	CKC/wetland	3
1123	Alnus rubra	Red Alder	16"	remove	4	CKC/wetland	3
1200	Populus trichocarpa	Black Cottonwood	11"	remove	4	CKC/buffer	3
321	Populus trichocarpa	Black Cottonwood	18"	remove	1	CKC/buffer	3
322	Alnus rubra	Red Alder	13"	remove	1	CKC/buffer	3
323	Alnus rubra	Red Alder	14"	remove	4	CKC/buffer	3
324	Populus trichocarpa	Black Cottonwood	14"	remove	4	CKC/buffer	3
429	Populus trichocarpa	Black Cottonwood	10"	remove	4	CKC/buffer	3
430	Populus trichocarpa	Black Cottonwood	8"	remove	4	CKC/buffer	3
432	Populus trichocarpa	Black Cottonwood	8"	remove	4	CKC/buffer	3

433	Populus trichocarpa	Black Cottonwood	16"	remove	4	CKC/buffer	3
434	Populus trichocarpa	Black Cottonwood	16"	remove	4	CKC/buffer	3
235	Populus trichocarpa	Black Cottonwood	14"	remove	4	CKC/buffer	3
435	Populus trichocarpa	Black Cottonwood	44"	remove	4	CKC/buffer	3
1-436	Populus trichocarpa	Black Cottonwood	7"	remove	4	CKC/buffer	3
325	Salix lasiandra	Pacific Willow	12"	remove	4	CKC/buffer	3
326	Salix lasiandra	Pacific Willow	6"	remove	4	CKC/buffer	3
327	Salix lasiandra	Pacific Willow	6"	remove	4	CKC/buffer	3
328	Salix lasiandra	Pacific Willow	8"	remove	4	CKC/buffer	3
329	Populus trichocarpa	Black Cottonwood	18"	remove	4	CKC/buffer	3
330	Populus trichocarpa	Black Cottonwood	20"	remove	4	CKC/buffer	3
331	Salix lasiandra	Pacific Willow	6", 4", 6", 8", 7", 8", 6"	remove	4	CKC/buffer	3
332	Populus trichocarpa	Black Cottonwood	7"	remove	4	CKC/buffer	3
333	Populus trichocarpa	Black Cottonwood	14"	remove	4	CKC/buffer	3
Map 17							
334	Populus trichocarpa	Black Cottonwood	7"	remove	4	CKC	3
1124	Arbutus menziesii	Madrona	10"	remove	4	CKC	3
1125	Acer macrophyllum	Big-leaf Maple	6", 6", 5"	remove	4	CKC	3
1126	Pseudotsuga menziesii	Douglas Fir	12"	remove	3	CKC	3

1127	Populus trichocarpa	Black Cottonwood	19"	remove	4	CKC	3
1128	Populus trichocarpa	Black Cottonwood	15"	remove	4	CKC	3
1129	Populus trichocarpa	Black Cottonwood	15"	remove	2	CKC	3
1130	Populus trichocarpa	Black Cottonwood	12", 16", 18"	remove	4	CKC	3
1131	Populus trichocarpa	Black Cottonwood	19"	remove	4	CKC	3
1133	Populus trichocarpa	Black Cottonwood	19"	remove	4	CKC	3
1136	Populus trichocarpa	Black Cottonwood	17"	remove	4	CKC	3
335	Pseudotsuga menziesii	Douglas-Fir	18"	remove	4	CKC	3
336	Pseudotsuga menziesii	Douglas-Fir	16"	remove	4	CKC	3
Map 18							
597	Acer macrophyllum	Big-leaf Maple	13", 14", 16"	remove	4	WSDOT ROW	5
598	Acer macrophyllum	Big-leaf Maple	9", 9", 9"	remove	4	WSDOT ROW	5
599	Pseudotsuga menziesii	Douglas Fir	17"	remove	4	WSDOT ROW	5
600	Pseudotsuga menziesii	Douglas Fir	14"	remove	4	WSDOT ROW	5
590	Acer macrophyllum	Big-leaf Maple	9", 8", 7"	remove	4	WSDOT ROW	5
586	Acer macrophyllum	Big-leaf Maple	7", 7", 9"	remove	4	COK parcel	2
587	Thuja plicata	Western Red cedar	5", 13", 11"	remove	4	COK parcel	2

588	Thuja plicata	Western Red cedar	5",14",12"	remove	4	COK parcel	2
589	Acer macrophyllum	Big-leaf Maple	6",6"	remove	4	COK parcel	2
742	Pseudotsuga menziesii	Douglas Fir	25"	remove	4	WSDOT ROW	5
741	Robinia pseudoacacia	Black Locust	16",9",9"	remove	4	WSDOT ROW	5
740	Populus trichocarpa	Black Cottonwood	14"	remove	4	WSOT ROW	5
739	Populus trichocarpa	Black Cottonwood	14",12",9", 19"	remove	4	WSDOT ROW	5
736	Populus trichocarpa	Black Cottonwood	25",24"	remove	4	WSDOT ROW	5
735	Acer sp.	Maple	15"	remove	4	WSDOT ROW	5
734	Acer sp.	Maple	15"	remove	4	WSDOT ROW	5
733	Acer sp.	Maple	7",7",9",8", 13"	remove	4	WSDOT ROW	5
732	Acer sp.	Maple	5",9",7",7", 9"	remove	4	WSDOT ROW	5
731	Acer sp.	Maple	17"	remove	4	WSDOT ROW	5
759	Populus trichocarpa	Black Cottonwood	18"	remove	4	WSDOT ROW	5
730	Acer sp.	Maple	5",6",6",4", 9",7"	remove	4	WSDOT ROW	5
729	Acer sp.	Maple	8",9",11",8 ",9",5"	remove	4	WSDOT ROW	5
728	Acer sp.	Maple	6",8",9",8"	remove	4	WSDOT ROW	5

727	Acer sp.	Maple	11",10",6"	remove	4	WSDOT ROW	5
745	Pseudotsuga menziesii	Douglas Fir	21"	remove	4	WSDOT ROW	5
746	Pseudotsuga menziesii	Douglas Fir	19"	remove	4	WSDOT ROW	5
726	Acer sp.	Maple	9",9",11",5",9",10",5"	remove	4	WSDOT ROW	5
725	Acer sp.	Maple	5",5",6",9",9",5"	remove	4	WSDOT ROW	5
724	Acer sp.	Maple	30"	remove	4	WSDOT ROW	5
723	Acer sp.	Maple	11",6",12",11",17"	remove	4	WSDOT ROW	5
722	Acer sp.	Maple	9",6",5",11",8",7"	remove	4	WSDOT ROW	5
721	Acer sp.	Maple	10",7",9",5",12",6"	remove	4	WSDOT ROW	5
497	Populus trichocarpa	Black Cottonwood	8"	remove	4	WSDOT ROW	5
750	Populus trichocarpa	Black Cottonwood	28"	remove	4	WSDOT ROW	5
751	Populus trichocarpa	Black Cottonwood	9"	remove	4	WSDOT ROW	5
752	Populus trichocarpa	Black Cottonwood	10"	remove	4	WSDOT ROW	5
753	Pseudotsuga menziesii	Douglas Fir	13"	remove	4	WSDOT ROW	5
754	Populus trichocarpa	Black Cottonwood	24"	remove	4	WSDOT ROW	5
755	Populus trichocarpa	Black Cottonwood	28"	remove	4	WSDOT ROW	5
758	Tsuga heterophylla	Western Hemlock	19"	remove	4	WSDOT ROW	5

720	Acer sp.	Maple	6"	remove	4	WSDOT ROW	5
760	Populus trichocarpa	Black Cottonwood	30"	remove	4	WSDOT ROW	5
719	Acer sp.	Maple	6",6",6"	remove	4	WSDOT ROW	5
718	Acer sp.	Maple	5",6",6",5", 6",5"	remove	4	WSDOT ROW	5
764	Arbutus menziesii	Madrone	20"	remove	4	WSDOT ROW	5
765	Pseudotsuga menziesii	Douglas Fir	15"	remove	3	WSDOT ROW	5
717	Acer sp.	Maple	17",13"	remove	4	WSDOT ROW	5
Map 19							
716	Acer sp.	Maple	10",8",9", 11",9"	remove	4	WSDOT ROW	5
715	Acer macrophyllum	Big-leaf Maple	10"	remove	4	WSDOT ROW	5
768	Populus trichocarpa	Black cottonwood	8"	remove	4	WSDOT ROW	5
769	Populus trichocarpa	Black cottonwood	20", 20"	remove	4	WSDOT ROW	5
771	Populus trichocarpa	Black Cottonwood	8"	remove	4	WSDOT ROW	5
772	Populus trichocarpa	Black Cottonwood	21"	remove	4	WSDOT ROW	5
773	Populus trichocarpa	Black Cottonwood	8"	remove	4	WSDOT ROW	5
774	Populus trichocarpa	Black Cottonwood	8"	remove	4	WSDOT ROW	5
714	Acer sp.	Maple	9",5"	remove	4	WSDOT ROW	5
713	Acer sp.	Maple	12"	remove	4	WSDOT ROW	5
712	Acer sp.	Maple	10"	remove	4	WSDOT ROW	5

777	Pseudotsuga menziesii	Douglas Fir	16"	remove	3	WSDOT ROW	5
778	Acer sp.	Maple	5",6"	remove	4	WSDOT ROW	5
779	Populus trichocarpa	Black Cottonwood	25"	remove	4	WSDOT ROW	5
781	Pseudotsuga menziesii	Douglas Fir	16"	remove	4	WSDOT ROW	5
784	Pseudotsuga menziesii	Douglas Fir	19"	remove	4	WSDOT ROW	5
783	Pseudotsuga menziesii	Douglas Fir	9"	remove	4	WSDOT ROW	5
786	Pseudotsuga menziesii	Douglas Fir	18"	remove	4	WSDOT ROW	5
711	Acer sp.	Maple	6"	remove	4	WSDOT ROW	5
710	Acer sp.	Maple	7"	remove	4	WSDOT ROW	5
709	Acer sp.	Maple	11",11"	remove	4	WSDOT ROW	5
708	Acer sp.	Maple	4",4",8"	remove	4	WSDOT ROW	5
1-499	Acer sp.	Maple	6"	remove		WSDOT ROW	5
707	Acer sp.	Maple	6"	remove	4	WSDOT ROW	5
802	Pseudotsuga menziesii	Douglas Fir	6"	remove	2	WSDOT ROW	5
803	Salix scouleriana	Scouler's Willow	8",7",7",5"	remove	4	WSDOT ROW	5
804	Pseudotsuga menziesii	Douglas Fir	7"	remove	4	WSDOT ROW	5
809	Populus trichocarpa	Black Cottonwood	20"	remove	4	WSDOT ROW	5
813	Populus trichocarpa	Black Cottonwood	16"	remove	4	WSDOT ROW	5
814	Alnus rubra	Red Alder	6"	remove	4	WSDOT ROW	5
818	Pseudotsuga menziesii	Douglas Fir	6"	remove	4	WSDOT ROW	5

819	Salix scouleriana	Scouler's Willow	6",7",6"	remove	2	WSDOT ROW	5
706	Acer sp.	Maple	6"	remove	4	WSDOT ROW	5
829	Populus trichocarpa	Black Cottonwood	24"	remove	4	WSDOT ROW	5
705	Acer sp.	Maple	6"	remove	4	WSDOT ROW	5
835	Thuja plicata	Western Redcedar	12"	remove	3	WSDOT ROW	5
836	Populus trichocarpa	Black Cottonwood	19"	remove	4	WSDOT ROW	5
838	Fraxinus latifolia	Oregon Ash	6"	remove	4	WSDOT ROW	5
844	Populus trichocarpa	Black Cottonwood	8"	remove	4	WSDOT ROW	5
845	Populus trichocarpa	Black Cottonwood	6"	remove	4	WSDOT ROW	5
846	Populus trichocarpa	Black Cottonwood	5",5",7"	remove	4	WSDOT ROW	5
847	Acer sp.	maple	8"	remove	4	WSDOT ROW	5
853	Populus trichocarpa	Black Cottonwood	20"	remove	4	WSDOT ROW	5
854	Populus trichocarpa	Black Cottonwood	13", 9"	remove	4	WSDOT ROW	5
855	Acer Macrophyllum	Big-leaf Maple	7"	remove	4	WSDOT ROW	5
857	Acer macrophyllum	Big-leaf Maple	8",6"	remove	4	WSDOT ROW	5
859	Acer macrophyllum	Big-leaf Maple	11"	remove	4	WSDOT ROW	5
862	Acer macrophyllum	Big-leaf Maple	6"	remove	4	WSDOT ROW	5
870	Alnus rubra	Red Alder	6"	remove	4	WSDOT ROW	5
871	Rhamnus purshiana	Cascara	7", 5"	remove	3	WSDOT ROW	5
872	Alnus rubra	Red Alder	7"	remove	3	WSDOT ROW	5

873	Alnus rubra	Red Alder	6"	remove	3	WSDOT ROW	5
500	Alnus rubra	Red Alder	8"	remove	1	WSDOT ROW	5
704	Acer sp.	Maple	18"	remove	4	WSDOT ROW	5
895	Alnus rubra	Red Alder	9"	remove	4	WSDOT ROW	5
894	Alnus rubra	Red Alder	7"	remove	4	WSDOT ROW	5
703	Acer sp.	Maple	17"	remove	4	WSDOT ROW	5
892	Alnus rubra	Red Alder	6"	remove	4	WSDOT ROW	5
893	Acer macrophyllum	Big-leaf Maple	19"	remove	4	WSDOT ROW	5
896	Acer macrophyllum	Big-leaf Maple	14"	remove	4	WSDOT ROW	5
897	Alnus rubra	Red Alder	4",6"	remove	4	WSDOT ROW	5
898	Alnus rubra	Red Alder	7"	remove	4	WSDOT ROW	5
899	Alnus rubra	Red Alder	7"	remove	4	WSDOT ROW	5
900	Rhamnus purshiana	Cascara	6"	remove	3	WSDOT ROW	5
701	Thuja plicata	Western Redcedar	17"	remove	4	WSDOT ROW	5
702	Acer sp.	Maple	11"	remove	4	WSDOT ROW	5
Map 20							
1-491	A. platanus	London Planetree	22"	remove	4	Street ROW	2
1-490	A. platanus	London Planetree	18"	remove	4	Street ROW	2
1-489	A. platanus	London Planetree	16"	remove	4	Street ROW	2
1-488	A. platanus	London Planetree	13"	remove	4	Street ROW	2

1-487	A. platanus	London Planetree	18"	remove	4	Street ROW	2
1-486	A. platanus	London Planetree	15"	remove	4	Street ROW	2
1-485	A. platanus	London Planetree	15"	remove	4	Street ROW	2
1-484	A. platanus	London Planetree	17"	remove	4	Street ROW	2
1-483	A. platanus	London Planetree	13"	remove	4	Street ROW	2
1-482	A. platanus	London Planetree	17"	remove	4	Street ROW	2
1-479	Acer sp.	Maple	16"	remove	4	Street ROW	2
1-478	Acer sp.	Maple	10"	remove	4	Street ROW	2
1-477	Acer sp.	Maple	14"	remove	4	Street ROW	2
1-476	Acer sp.	Maple	13"	remove	4	Street ROW	2
1-475	Acer sp.	Maple	12"	remove	4	Street ROW	2
1-474	Acer sp.	Maple	13"	remove	4	Street ROW	2
1-473	Acer sp.	Maple	13"	remove	4	Street ROW	2
Map 21							
1-472	Pinus contorta	Lodgepole Pine	22"	trim	4	Street ROW	n/a
1-471	Pinus contorta	Lodgepole Pine	20"	trim	4	Street ROW	n/a
1-470	Pinus contorta	Lodgepole Pine	19"	trim	4	Street ROW	n/a
1-469	Pinus contorta	Lodgepole Pine	16"	trim	4	Street ROW	n/a
1-468	Pinus contorta	Lodgepole Pine	22"	trim	4	Street ROW	n/a
1-467	Pinus contorta	Lodgepole Pine	20"	trim	4	Street ROW	n/a

1-466	Pinus contorta	Lodgepole Pine	16"	trim	4	Street ROW	n/a
1-465	Pinus contorta	Lodgepole Pine	18"	trim	4	Street ROW	n/a
1-464	Pinus contorta	Lodgepole Pine	16"	trim	4	Street ROW	n/a
1-463	Pinus contorta	Lodgepole Pine	18"	trim	4	Street ROW	n/a
1-462	Pinus contorta	Lodgepole Pine	18"	trim	4	Street ROW	n/a
1-461	Pinus contorta	Lodgepole Pine	17"	trim	4	Street ROW	n/a
1-460	Pinus contorta	Lodgepole Pine	15"	trim	4	Street ROW	n/a
1-459	Pinus contorta	Lodgepole Pine	21"	trim	4	Street ROW	n/a
1-458	Pinus contorta	Lodgepole Pine	25"	trim	4	Street ROW	n/a
1-457	Acer sp.	Maple	7"	remove	4	Street ROW	2
1-456	Fraxinus sp.	Ash	21"	remove	4	Street ROW	2
1-455	Thuja plicata	Western Red-cedar	33"	remove	4	Street ROW	2
1-454	Fraxinus sp.	Ash	7"	remove	4	Street ROW	2
1-453	Thuja plicata	Western Red-cedar	50"	remove	4	Street ROW	2
1-451	Robinia pseudoacacia	Black Locust	15"	remove	4	Street ROW	2
1-450	Robinia pseudoacacia	Black Locust	19"	remove	4	Street ROW	2
1-448	Pseudotsuga menziesii	Douglas Fir	18"	trim	4	Street ROW	n/a
1-447	Acer sp.	Maple	17"	trim	4	Street ROW	n/a

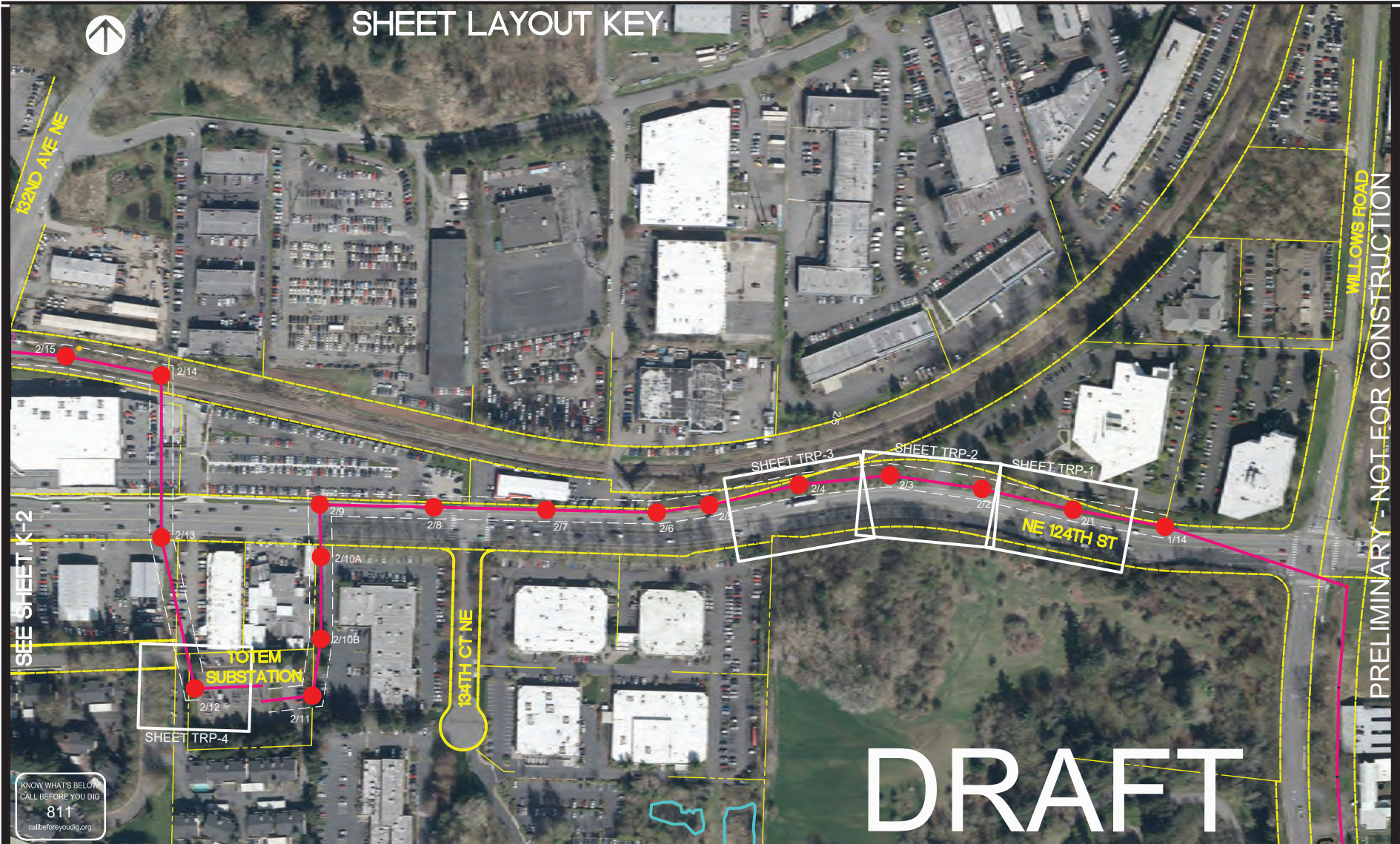
1-446	Thuja plicata	Western Red-cedar	21"	trim	4	Street ROW	n/a
1-445	Acer sp.	Maple	6"	trim	4	Street ROW	n/a
1-444	Acer sp.	Maple	6"	trim	4	Street ROW	n/a
1-443	Acer sp.	Maple	6"	trim	4	Street ROW	n/a
1-442	Acer sp.	Maple	9"	trim	4	Street ROW	n/a
1193	Quercus sp.	Oak	20"	trim	4	Street ROW	n/a
1194	Quercus sp.	Oak	15"	trim	4	Street ROW	n/a
1195	Quercus sp.	Oak	19"	trim	4	Street ROW	n/a
1196	Quercus sp.	Oak	16"	trim	4	Street ROW	n/a
1197	Quercus sp.	Oak	16"	trim	4	Street ROW	n/a
Map 22							
1198	Quercus sp.	Oak	15"	trim	4	Street ROW	n/a
1137	Platanus occidentalis	Sycamore	20"	remove	3	Private property	1
1138	Acer macrophyllum	Big-leaf Maple	20"	remove	4	Private property	1
1139	Platanus occidentalis	Sycamore	18"	remove	3	Private property	1
1140	Pseudotsuga menziesii	Douglas Fir	14"	remove	4	buffer/private property	4
1141	Pinus sp.	Pine	21"	remove	4	buffer/private property	4

1142	Pinus sp.	Pine	21"	remove	4	buffer/private property	4
1143	Alnus rubra	Red Alder	16"	remove	4	buffer/private property	4
1144	Alnus rubra	Red Alder	13"	remove	3	buffer/private property	4
1145	Alnus rubra	Red Alder	7"	remove	3	buffer/private property	4
1146	Alnus rubra	Red Alder	9"	remove	3	buffer/private property	4
1147	Alnus rubra	Red Alder	9"	remove	3	buffer/private property	4
1148	Alnus rubra	Red Alder	6"	remove	3	buffer/private property	4
1149	Alnus rubra	Red Alder	15"	remove	3	buffer/private property	4
1150	Alnus rubra	Red Alder	17"	remove	3	buffer/private property	4
1151	Quercus	Oak	15"	remove	4	private property	1
1152	Tsuga heterophylla	Western Hemlock	7"	remove	3	private property	1
1153	Pseudotsuga menziesii	Douglas Fir	12"	remove	3	private property	1
1154	Pseudotsuga menziesii	Douglas Fir	13"	remove	3	private property	1
1155	Pseudotsuga menziesii	Douglas Fir	12"	remove	3	private property	1

1156	Pseudotsuga menziesii	Douglas Fir	12"	remove	3	private property	1
1157	Pseudotsuga menziesii	Douglas Fir	15"	remove	3	private property	1
1158	Pseudotsuga menziesii	Douglas Fir	14"	remove	3	private property	1
1159	Pseudotsuga menziesii	Douglas Fir	12"	remove	3	private property	1
1160	Pseudotsuga menziesii	Douglas Fir	11"	remove	3	private property	1
1161	Pseudotsuga menziesii	Douglas Fir	10"	remove	3	private property	1
1162	Liquidambar styraciflua	Sweetgum	10"	remove	2	private property	1
1163	Liquidambar styraciflua	Sweetgum	8"	remove	2	private property	1
1164	Tsuga heterophylla	Western Hemlock	9"	remove	3	private property	1
1165	Liquidambar styraciflua	Sweetgum	8"	remove	3	private property	1
1166	Tsuga heterophylla	Western Hemlock	12"	remove	3	private property	1
1167	Tsuga heterophylla	Western Hemlock	15"	remove	3	private property	1
1168	Tsuga heterophylla	Western Hemlock	19"	remove	3	private property	1
1169	Tsuga heterophylla	Western Hemlock	17"	remove	3	private property	1
Map 23							
1170	Thuja plicata	Western Redcedar	12"	remove	2	Buffer/private property	4
1171	Pseudotsuga menziesii	Douglas Fir	12"	remove	2	Buffer/private property	4

1172	Alnus rubra	Red Alder	8"	remove	4	Buffer/private property	4
1173	Thuja plicata	Western Redcedar	10"	remove	2	Buffer/private property	4
1174	Thuja plicata	Western Redcedar	10"	remove	2	Buffer/private property	4
Map 24							
1177	Pinus sp.	Pine	9"	remove	2	Buffer/private property	4
1178	Acer macrophyllum	Big-leaf Maple	17"	remove	3	Street ROW	2
1179	Acer macrophyllum	Big-leaf Maple	19"	remove	3	Street ROW	2

SHEET LAYOUT KEY



KNOW WHAT'S BELOW
CALL BEFORE YOU DIG
811
callbeforeyoudig.org

LEGEND

PROPERTY LINE
EXISTING RIGHT OF WAY
CHAIN LINK FENCE
PROPOSED TRANSMISSION ALIGNMENT
50' WIRE ZONE

2/14
PROPOSED TRANSMISSION POLE

SHEET INDEX

SHEET LAYOUT KEY
TREE RESTORATION PLAN
TREE RESTORATION TREE
SCHEDULE, PLANTING NOTES
AND DETAILS
TREE REPLACEMENT TABLE

SHEET

K-1~K-5
TRP-1~TRP-12
NDT-1~NDT-4
TRT-1~TRT-2



TREE RESTORATION PLAN
NE 124TH STREET
FOR
PUGET SOUND ENERGY
CITY OF KIRKLAND, KING COUNTY, WASHINGTON

DAVID EVANS
AND ASSOCIATES INC.
14432 SE Evergreen Way Suite 400
Burien, WA 98148
Phone: 425.515.9850



REVISIONS: APPD.

DATE: FEBRUARY, 2020
DESIGN: JCCA
DRAWING: GSK
CHECKED: JCCA
REVISION NUMBER:

SCALE: 1" = 200'

PROJECT NUMBER:
PSEN0000-0169

DRAWING FILE:
IaEM16psen00000169.dwg

SHEET NO.
K-1
OF 23

SHEET LAYOUT KEY

KIRKLAND CORRIDOR

128TH LN NE

NE 124TH ST

132ND AVE NE

SEE SHEET K-1

2/19

2/18

2/17

2/16

SEE SHEET K-3

PROPERTY LINE
EXISTING RIGHT OF WAY
CHAIN LINK FENCE
☒ PROPOSED TRANSMISSION ALIGNMENT
50' WIRE ZONE

**DAVID EVANS
AND ASSOCIATES, INC.**
14432 SE Eastgate Way, Suite 400
Bellevue Washington 98007
Phone: 425.519.6500

DATE: FEBRUARY, 2020
DESIGN: JCJA
DRAWN: GBK
CHECKED: JCJA
REVISION
NUMBER:

SCALE: 1" = 200'

PROJECT NUMBER:

DRAWING FILE:
laEM16psen00000169.dwg

SHEET NO.
K-2
OF 23

K-2

OF 23

Plot Date: 2/10/2020 12:29 PM
 By: Gregory King
 Save Date: 2/10/2020 12:24 PM
 By: GSK File: P:\P\SEN\00000169\0400CAD\ASheets\2019-Kirkland Restoration Plan\A-TRP SEG 1.pers00000169.dwg

PSE **PUGET SOUND ENERGY**
The Energy To Do Great Things

Plot Date: 2/10/2020 12:29 PM
Save Date: 2/10/2020 12:28 PM
By: Gregory King
File: P:\PSE\00000169\0400\LOCAL\Drawings\2018-Aerial Restoration Plan\TRP-SEG_L_Plan00000169.dwg



KNOW WHAT'S BELOW
CALL BEFORE YOU DIG
811
callbeforeyoudig.org

LEGEND

PROPERTY LINE
EXISTING RIGHT OF WAY
CHAIN LINK FENCE
PROPOSED TRANSMISSION ALIGNMENT
50' WIRE ZONE



2/14
PROPOSED TRANSMISSION POLE

0 100 200 400

PSE **PUGET SOUND ENERGY**
The Energy To Do Great Things

SEE SHEET K-2
TREE RESTORATION PLAN
NE 124TH STREET
FOR
PUGET SOUND ENERGY
CITY OF KIRKLAND, KING COUNTY, WASHINGTON

**DAVID EVANS
AND ASSOCIATES INC.**
14432 SE Evergreen Way, Suite 400
Burien, WA 98148
Phone: 425.515.9850



REVISIONS: APPD.

DATE: FEBRUARY, 2020
DESIGN: JCA
DRAWING: GSK
CHECKED: JCA
REVISION NUMBER:

SCALE: 1" = 200'

PROJECT NUMBER:
PSEN0000-0169

DRAWING FILE:
IaEM16psen00000169.dwg

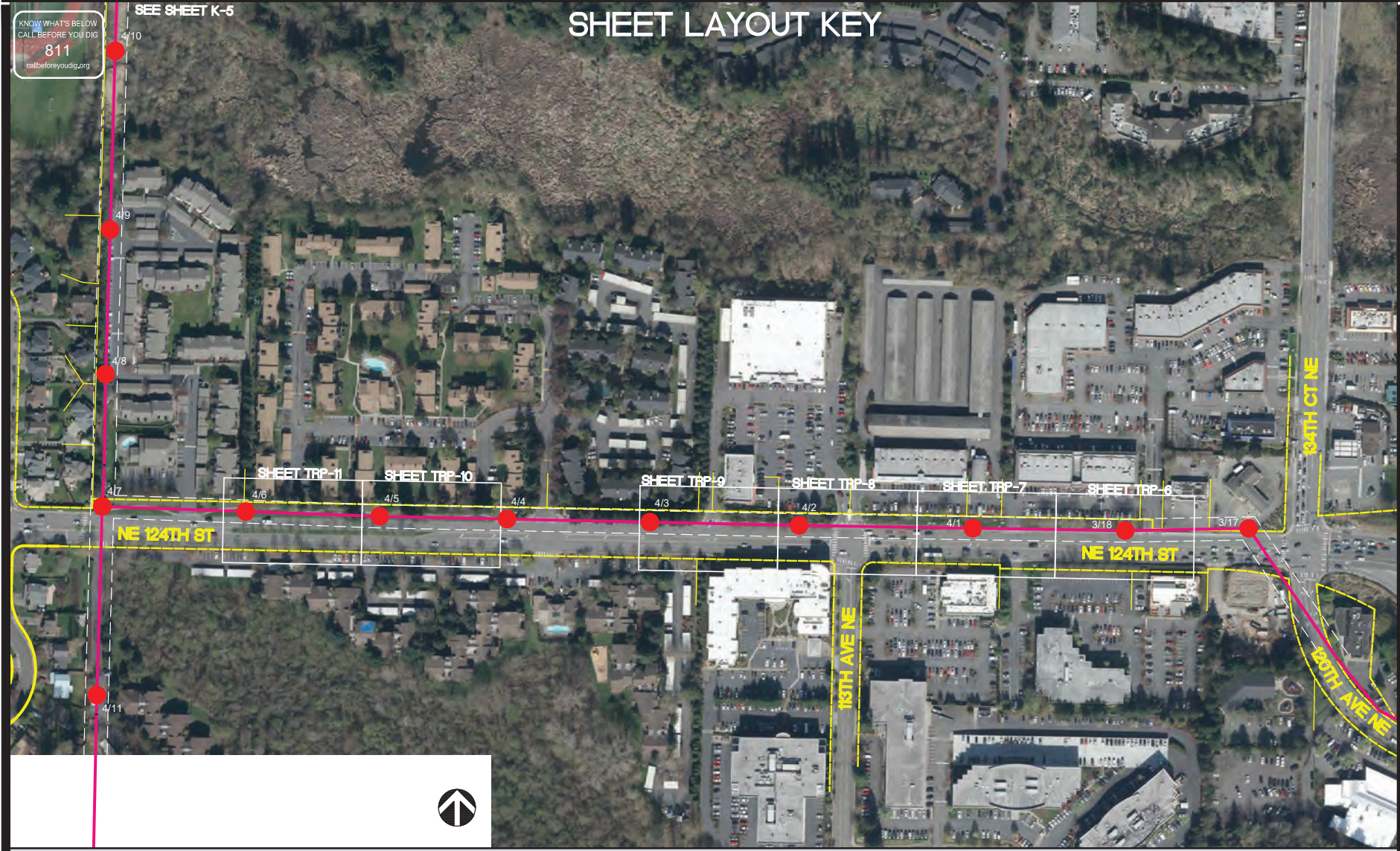
SHEET NO.
K-3
OF 23

Plot Date: 2/10/2020 12:31 PM
Save Date: 2/10/2020 8:47 AM
By: Gregory King
File: P:\PSE\N00000169\400\CA\CA\13-Sheet 2018-400and Restoration Penals TRP-SEG_3.psd0000169.dwg

KNOW WHAT'S BELOW
CALL BEFORE YOU DIG
811
callbeforeyoudig.org

SEE SHEET K-5

SHEET LAYOUT KEY



LEGEND

- PROPERTY LINE
- EXISTING RIGHT OF WAY
- CHAIN LINK FENCE
- PROPOSED TRANSMISSION ALIGNMENT
- 50' WIRE ZONE
- 2/14 PROPOSED TRANSMISSION POLE

PUGET SOUND ENERGY
The Energy To Do Great Things

TREE RESTORATION PLAN
NE 124TH STREET
FOR
PUGET SOUND ENERGY
CITY OF KIRKLAND, KING COUNTY, WASHINGTON

**DAVID EVANS
AND ASSOCIATES INC.**
14432 SE Evergreen Way, Suite 400
Burien, WA 98148
Phone: 425.519.9850

REVISIONS:	APPD.

DATE: FEBRUARY, 2020
DESIGN: JCCA
DRAWING: GSK
CHECKED: JCCA
REVISION NUMBER:

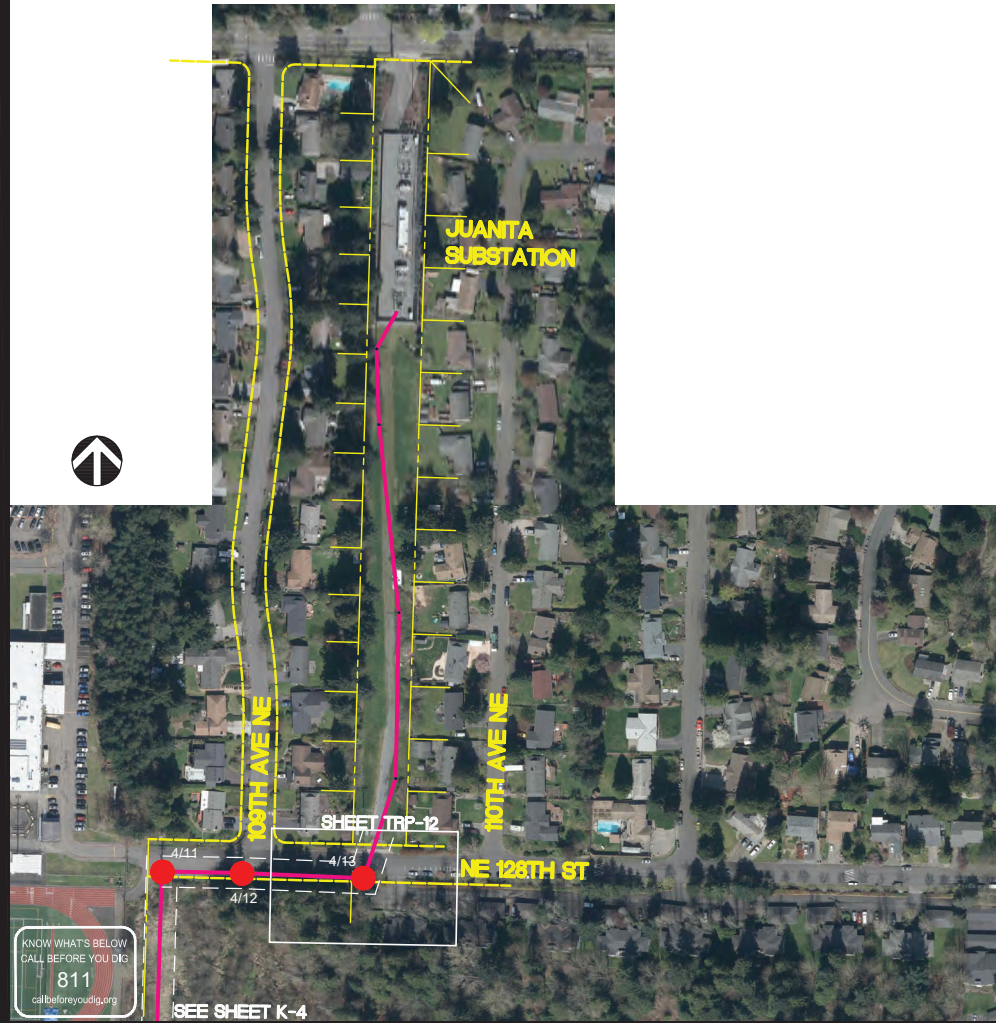
SCALE: 1" = 200'

PROJECT NUMBER: PSEN0000-0169

DRAWING FILE: laEM16psen00000169.dwg

SHEET NO. **K-4**
OF 23

SHEET LAYOUT KEY



LEGEND

PROPERTY LINE
EXISTING RIGHT OF WAY
CHAIN LINK FENCE
PROPOSED TRANSMISSION ALIGNMENT
50' WIRE ZONE



2/14
PROPOSED TRANSMISSION POLE



TREE RESTORATION PLAN
NE 124TH STREET
FOR
PUGET SOUND ENERGY
CITY OF KIRKLAND, KING COUNTY, WASHINGTON



REVISIONS: APPD.

DATE: FEBRUARY, 2020
DESIGN: JOCA
DRAWING: GSK
CHECKED: JOCA
REVISION NUMBER:

SCALE: 1" = 200'

PROJECT NUMBER: PSEN0000-0169

DRAWING FILE: laEM16psen00000169.dwg

SHEET NO.

K-5
OF 23

KNOW WHAT'S BELOW
CALL BEFORE YOU DIG
811
callbeforeyoudig.org

SEE SHEET TRP-2

NE 124TH ST

2/1

BEGIN RESTORATION PROJECT

1105
1106
1107
1108
1109
1110
1111
1112
1113
1114
1115
1116
1117
1118

GENERAL NOTES

1. SEE TREE REPLACEMENT TABLE (SHEET TRT-1 ~TRT-2) FOR EXISTING TREE SPECIES TO BE REMOVED AND REPLACEMENT TREE SPECIES.
2. TREES REPLACED SHALL BE REPLACED "IN-PLACE" PER TREE REPLACEMENT DETAIL, SHEET NDT-4.
3. SEE SHEETS NDT-1~NDT-3 FOR TREE SCHEDULE AND NOTES.
4. TREES WITHIN THE 50' WIRE ZONE SHALL NOT EXCEED 25' MAXIMUM MATURE TREE HEIGHT.



Plot Date: 2/10/2020 8:11 AM
Save Date: 2/2/2020 2:18 PM
By: Gregory King
File: P:\PSE\N00000169\400\COLA\Drawings\2018-Corridor Restoration\Planis-TRP-SEG_L_Plan00000169.dwg

KNOW WHAT'S BELOW
CALL BEFORE YOU DIG
811
callbeforeyoudig.org

SEE SHEET TRP-3

SEE SHEET TRP-1

NE 124TH ST

2/3

2/2

1104



LEGEND

PROPERTY LINE
EXISTING RIGHT OF WAY
CHAIN LINK FENCE
PROPOSED TRANSMISSION ALIGNMENT
50' WIRE ZONE
PROPOSED TRANSMISSION POLE



DECIDUOUS TREE TO BE REMOVED
AND REPLACED (SEE GENERAL NOTES 1,2)



CONIFEROUS TREE TO BE REMOVED
AND REPLACED (SEE GENERAL NOTES 1,2)



2/14

GENERAL NOTES

1. SEE TREE REPLACEMENT TABLE (SHEET TRT-1 ~TRT-2) FOR EXISTING TREE SPECIES TO BE REMOVED AND REPLACEMENT TREE SPECIES.
2. TREES REPLACED SHALL BE REPLACED "IN-PLACE" PER TREE REPLACEMENT DETAIL, SHEET NDT-4.
3. SEE SHEETS NDT-1~NDT-3 FOR TREE SCHEDULE AND NOTES.
4. TREES WITHIN THE 50' WIRE ZONE SHALL NOT EXCEED 25' MAXIMUM MATURE TREE HEIGHT.



TREE RESTORATION PLAN
NE 124TH STREET
FOR
PUGET SOUND ENERGY
CITY OF KIRKLAND, KING COUNTY, WASHINGTON

DAVID EVANS
AND ASSOCIATES INC.
14432 SE Evergreen Way, Suite 400
Burien, WA 98148
Phone: 425.519.8800



REVISIONS: APPD.

DATE: FEBRUARY, 2020
DESIGN: JGA
DRAWING: GSK
CHECKED: JGA
REVISION NUMBER:

SCALE: 1"=20'

PROJECT NUMBER:

PSEN0000-0169

DRAWING FILE:
laEM16psen00000169.dwg

SHEET NO.

TRP-2
OF 23

KNOW WHAT'S BELOW
CALL BEFORE YOU DIG
811
callbeforeyoudig.org



2/4

NE 124TH ST

SEE SHEET TRP-2

GENERAL NOTES

1. SEE TREE REPLACEMENT TABLE (SHEET TRT-1 ~TRT-2) FOR EXISTING TREE SPECIES TO BE REMOVED AND REPLACEMENT TREE SPECIES.
2. TREES REPLACED SHALL BE REPLACED "IN-PLACE" PER TREE REPLACEMENT DETAIL, SHEET NDT-4.
3. SEE SHEETS NDT-1~NDT-3 FOR TREE SCHEDULE AND NOTES.
4. TREES WITHIN THE 50' WIRE ZONE SHALL NOT EXCEED 25' MAXIMUM MATURE TREE HEIGHT.

LEGEND

PROPERTY LINE
EXISTING RIGHT OF WAY
CHAIN LINK FENCE
PROPOSED TRANSMISSION ALIGNMENT
50' WIRE ZONE
PROPOSED TRANSMISSION POLE

DECIDUOUS TREE TO BE REMOVED
AND REPLACED (SEE GENERAL NOTES 1,2)
CONIFEROUS TREE TO BE REMOVED
AND REPLACED (SEE GENERAL NOTES 1,2)



2/14



TREE RESTORATION PLAN
NE 124TH STREET
FOR
PUGET SOUND ENERGY
CITY OF KIRKLAND, KING COUNTY, WASHINGTON

DAVID EVANS
AND ASSOCIATES INC.
14432 SE Evergreen Way, Suite 400
Burien, WA 98148
Phone: 425.519.9500



REVISIONS: APPD.

DATE: FEBRUARY, 2020
DESIGN: JCGA
DRAWING: GSK
CHECKED: JCGA
REVISION NUMBER:

SCALE: 1"=20'

PROJECT NUMBER:

PSEN0000-0169

DRAWING FILE:
laEM16psen00000169.dwg

SHEET NO.

TRP-3
OF 23

Plot Date: 2/7/2020 1:58 PM
Save Date: 2/7/2020 1:27 AM
By: Gregory King
File: P:\PSE\000000169\0400\0401\Drawings\2018-Corridor Restoration\Permits\TRP-SEG_L_Pse00000169.dwg



KNOW WHAT'S BELOW
CALL BEFORE YOU DIG
811
callbeforeyoudig.org

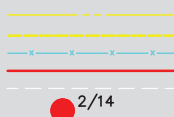
NE 123rd ST

GENERAL NOTES

1. SEE TREE REPLACEMENT TABLE (SHEET TRT-1 ~TRT-2) FOR EXISTING TREE SPECIES TO BE REMOVED AND REPLACEMENT TREE SPECIES.
2. TREES REPLACED SHALL BE REPLACED "IN-PLACE" PER TREE REPLACEMENT DETAIL, SHEET NDT-4.
3. SEE SHEETS NDT-1~NDT-3 FOR TREE SCHEDULE AND NOTES.
4. TREES WITHIN THE 50' WIRE ZONE SHALL NOT EXCEED 25' MAXIMUM MATURE TREE HEIGHT.

LEGEND

PROPERTY LINE
EXISTING RIGHT OF WAY
CHAIN LINK FENCE
PROPOSED TRANSMISSION ALIGNMENT
50' WIRE ZONE
PROPOSED TRANSMISSION POLE



DECIDUOUS TREE TO BE REMOVED
AND REPLACED (SEE GENERAL NOTES 1,2)



CONIFEROUS TREE TO BE REMOVED
AND REPLACED (SEE GENERAL NOTES 1,2)



2/14



TREE RESTORATION PLAN
NE 124TH STREET
FOR
PUGET SOUND ENERGY
CITY OF KIRKLAND, KING COUNTY, WASHINGTON

DAVID EVANS
AND ASSOCIATES INC.
14432 SE Evergreen Way, Suite 400
Burien, WA 98148
Phone: 425.519.9500



REVISIONS: APPD.

DATE: FEBRUARY, 2020
DESIGN: JCGA
DRAWING: GSK
CHECKED: JCGA
REVISION NUMBER:

SCALE: 1"=20'

PROJECT NUMBER:
PSEN0000-0169

DRAWING FILE:
IaEM16psen00000169.dwg

SHEET NO.

TRP-4
OF 23

KNOW WHAT'S BELOW
CALL BEFORE YOU DIG
811
callbeforeyoudig.org

SEE LANDSCAPE RESTORATION PLAN
120TH AVE NE

120TH AVE NE

319

587

588

589

586



INTERSTATE 405

GENERAL NOTES

1. SEE TREE REPLACEMENT TABLE (SHEET TRT-1 ~TRT-2) FOR EXISTING TREE SPECIES TO BE REMOVED AND REPLACEMENT TREE SPECIES.
2. TREES REPLACED SHALL BE REPLACED "IN-PLACE" PER TREE REPLACEMENT DETAIL, SHEET NDT-4.
3. SEE SHEETS NDT-1~NDT-3 FOR TREE SCHEDULE AND NOTES.
4. TREES WITHIN THE 50' WIRE ZONE SHALL NOT EXCEED 25' MAXIMUM MATURE TREE HEIGHT.

LEGEND

PROPERTY LINE
EXISTING RIGHT OF WAY
CHAIN LINK FENCE
PROPOSED TRANSMISSION ALIGNMENT
50' WIRE ZONE
PROPOSED TRANSMISSION POLE



DECIDUOUS TREE TO BE REMOVED
AND REPLACED (SEE GENERAL NOTES 1,2)



CONIFEROUS TREE TO BE REMOVED
AND REPLACED (SEE GENERAL NOTES 1,2)



2/14



TREE RESTORATION PLAN
NE 124TH STREET
FOR
PUGET SOUND ENERGY
CITY OF KIRKLAND, KING COUNTY, WASHINGTON

DAVID EVANS
AND ASSOCIATES INC.
14432 SE Evergreen Way, Suite 400
Burien, WA 98148
Phone: 425.519.9500



REVISIONS: APPD.

DATE: FEBRUARY, 2020
DESIGN: JOCA
DRAWING: GSK
CHECKED: JOCA
REVISION NUMBER:

SCALE: 1"=20'

PROJECT NUMBER:
PSEN0000-0169

DRAWING FILE:
IaEM16psen00000169.dwg

SHEET NO.

TRP-5
OF 23

SEE SHEET TRP-7

3/18

2926059

TREE RESTORATION PLAN
NE 124TH STREET
FOR
PUGET SOUND ENERGY
CITY OF KIRKLAND, KING COUNTY, WASHINGTON

**DAVID EVANS
AND ASSOCIATES INC.**
14432 SE Eastgate Way, Suite 400
Bellevue Washington 98007
Phone: 425.519.6500



REVISIONS: APPT

DATE: FEBRUARY, 2020
DESIGN: JCJA
DRAWN: GBK
CHECKED: JCJA
REVISION
NUMBER:

SCALE: 1"=20'

PROJECT NUMBER:

DRAWING FILE:
laEM16psen00000169.dwg

SHEET NO.
TRP-6
OF 23

PROPERTY LINE
EXISTING RIGHT OF WAY
CHAIN LINK FENCE
Q PROPOSED TRANSMISSION ALIGNMENT
50' WIRE ZONE
PROPOSED TRANSMISSION POLE



2/14

1. SEE TREE REPLACEMENT TABLE (SHEET TRT-1 ~TRT-2) FOR EXISTING TREE SPECIES TO BE REMOVED AND REPLACEMENT TREE SPECIES.
2. TREES REPLACED SHALL BE REPLACED "IN-PLACE" PER TREE REPLACEMENT DETAIL, SHEET NDT-4.
3. SEE SHEETS NDT-1~NDT-3 FOR TREE SCHEDULE AND NOTES.
4. TREES WITHIN THE 50' WIRE ZONE SHALL NOT EXCEED 25' MAXIMUM MATURE TREE HEIGHT.



KNOW WHAT'S BELOW
CALL BEFORE YOU DIG
811
callbeforeyoudig.org

SEE SHEET TRP-8

SEE SHEET TRP-6

NE 124TH ST

4/1

1-485

1-486

1-487

LEGEND

PROPERTY LINE
EXISTING RIGHT OF WAY
CHAIN LINK FENCE
PROPOSED TRANSMISSION ALIGNMENT
50' WIRE ZONE
PROPOSED TRANSMISSION POLE

DECIDUOUS TREE TO BE REMOVED
AND REPLACED (SEE GENERAL NOTES 1,2)

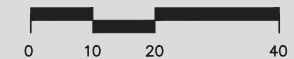
CONIFEROUS TREE TO BE REMOVED
AND REPLACED (SEE GENERAL NOTES 1,2)



2/14

GENERAL NOTES

1. SEE TREE REPLACEMENT TABLE (SHEET TRT-1 ~TRT-2) FOR EXISTING TREE SPECIES TO BE REMOVED AND REPLACEMENT TREE SPECIES.
2. TREES REPLACED SHALL BE REPLACED "IN-PLACE" PER TREE REPLACEMENT DETAIL, SHEET NDT-4.
3. SEE SHEETS NDT-1~NDT-3 FOR TREE SCHEDULE AND NOTES.
4. TREES WITHIN THE 50' WIRE ZONE SHALL NOT EXCEED 25' MAXIMUM MATURE TREE HEIGHT.



TREE RESTORATION PLAN
NE 124TH STREET
FOR
PUGET SOUND ENERGY
CITY OF KIRKLAND, KING COUNTY, WASHINGTON

DAVID EVANS
AND ASSOCIATES INC.
14432 SE Evergate Way, Suite 400
Burien, WA 98148
Phone: 425.519.8800



REVISIONS: APPD.

DATE: FEBRUARY, 2020
DESIGN: JCGA
DRAWING: GSK
CHECKED: JCGA
REVISION NUMBER:

SCALE: 1"=20'

PROJECT NUMBER:

PSEN0000-0169

DRAWING FILE:
laem16psen00000169.dwg

SHEET NO.

TRP-7

OF 23

KNOW WHAT'S BELOW
CALL BEFORE YOU DIG
811
callbeforeyoudig.org

SEE SHEET TRP-9

SEE SHEET TRP-7

NE 124TH ST



LEGEND

PROPERTY LINE
EXISTING RIGHT OF WAY
CHAIN LINK FENCE
PROPOSED TRANSMISSION ALIGNMENT
50' WIRE ZONE
PROPOSED TRANSMISSION POLE

DECIDUOUS TREE TO BE REMOVED
AND REPLACED (SEE GENERAL NOTES 1,2)
CONIFEROUS TREE TO BE REMOVED
AND REPLACED (SEE GENERAL NOTES 1,2)



2/14

GENERAL NOTES

1. SEE TREE REPLACEMENT TABLE (SHEET TRT-1 ~TRT-2) FOR EXISTING TREE SPECIES TO BE REMOVED AND REPLACEMENT TREE SPECIES.
2. TREES REPLACED SHALL BE REPLACED "IN-PLACE" PER TREE REPLACEMENT DETAIL, SHEET NDT-4.
3. SEE SHEETS NDT-1~NDT-3 FOR TREE SCHEDULE AND NOTES.
4. TREES WITHIN THE 50' WIRE ZONE SHALL NOT EXCEED 25' MAXIMUM MATURE TREE HEIGHT.



TREE RESTORATION PLAN
NE 124TH STREET
FOR
PUGET SOUND ENERGY
CITY OF KIRKLAND, KING COUNTY, WASHINGTON

DAVID EVANS
AND ASSOCIATES INC.
14432 SE Evergreen Way, Suite 400
Burien, WA 98148
Phone: 425.519.8800



REVISIONS: APPD.

DATE: FEBRUARY, 2020
DESIGN: JCGA
DRAWING: GSK
CHECKED: JCGA
REVISION NUMBER:

SCALE: 1"=20'

PROJECT NUMBER:

PSEN0000-0169

DRAWING FILE:
laem16psen00000169.dwg

SHEET NO.

TRP-8

OF 23

callbeforeyoudig.org

NE 124TH ST

SEE SHEET TRP-8

1. SEE TREE REPLACEMENT TABLE (SHEET TRT-1 ~TRT-2) FOR EXISTING TREE SPECIES TO BE REMOVED AND REPLACEMENT TREE SPECIES.
2. TREES REPLACED SHALL BE REPLACED "IN-PLACE" PER TREE REPLACEMENT DETAIL, SHEET NDT-4.
3. SEE SHEETS NDT-1~NDT-3 FOR TREE SCHEDULE AND NOTES.
4. TREES WITHIN THE 50' WIRE ZONE SHALL NOT EXCEED 25' MAXIMUM MATURE TREE HEIGHT.

CONIFEROUS TREE TO BE REMOVED
AND REPLACED (SEE GENERAL NOTES 1,2)



2/14



**DAVID EVANS
AND ASSOCIATES INC.**
14432 SE Eastgate Way, Suite 400
Bellevue Washington 98007
Phone: 425.519.6500



TRP-9
of 23