

architect,
MCDONAGHAN ARCHITECTS
civil engineer,
JACOBSON CONSULTING ENGINEERS
landscape architect,
WEISMAN DESIGN GROUP
structural engineer,
PCS STRUCTURAL SOLUTIONS
mechanical engineer,
ICE ENGINEERS
electrical engineer,
HARBO ENGINEERS



project,
LAKE WASHINGTON HIGH SCHOOL
ADDRESS
city,
LAKE WASHINGTON SCHOOL
DISTRICT
location,
NEILAND, WA

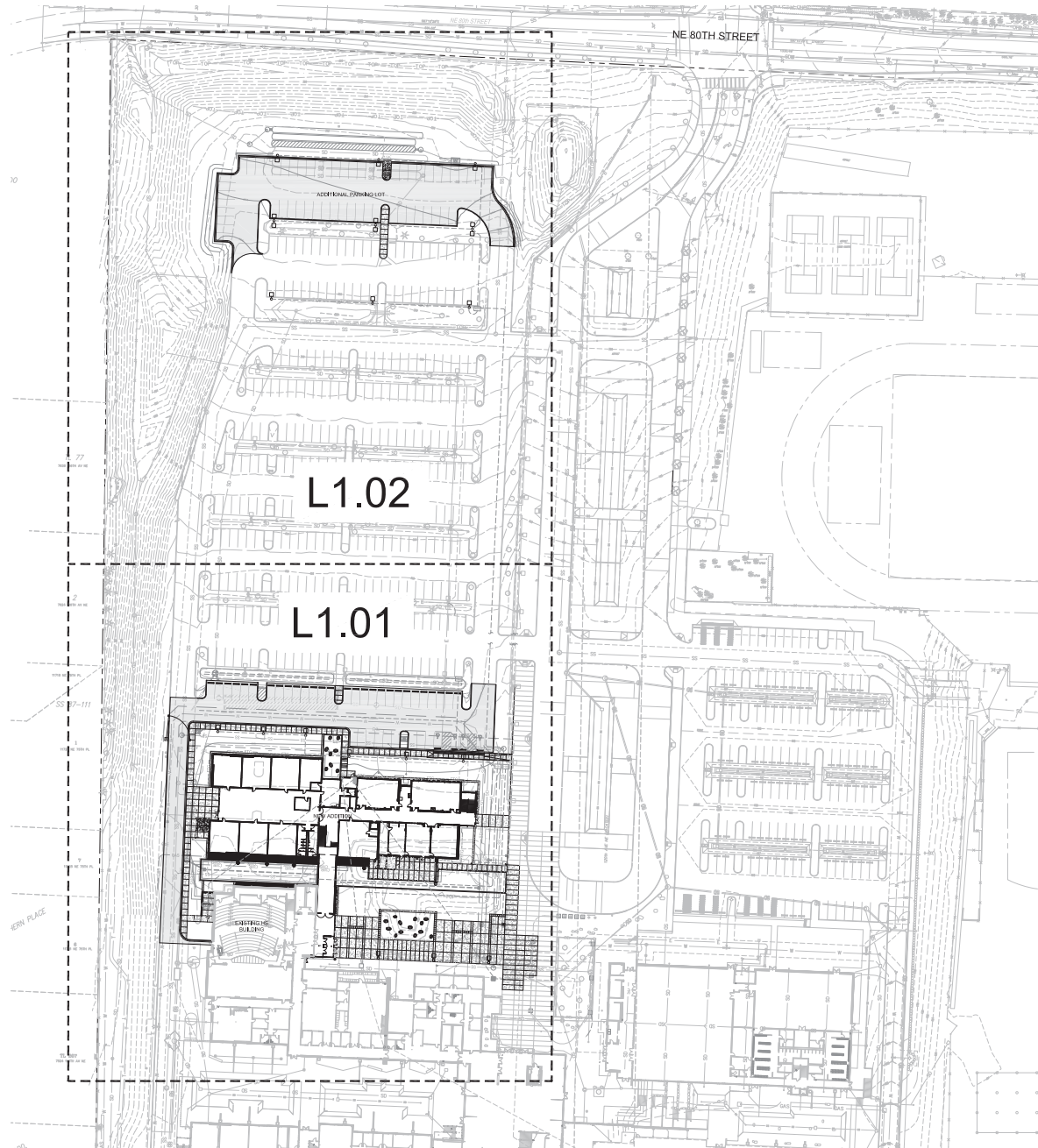
Project No. 1813.00
OVERALL SITE
PLAN

issue,
30 JULY 18
schematic design
30 JULY 18
scheme development
25 JAN 19
permit set
01 MAR 19

revision,
26 APR 19
PERMIT RESUBMITTAL

drawn,
checked,
by

sheet,
L1.00



SITE IMPROVEMENTS LEGEND

SYMBOL	ITEM	DESCRIPTION
	CONCRETE SEAT WALL	SEE DETAIL "A" ON SHEET L4.00 AND SPECIFICATIONS.
	CONCRETE SEAT WALL W/ MONUMENT PLACQUE	SEE DETAIL "D" ON SHEET L4.01 AND SPECIFICATIONS.
	FLAG POLE	SEE DETAIL "Y" ON SHEET L4.00 AND SPECIFICATIONS.
	TRASH RECEPTACLE	SEE SPECIFICATIONS.
	BOULDERS	3-4" MAX GRANITE, SEE DETAIL "V" ON SHEET L4.00 AND SPECIFICATIONS.
	CONCRETE PAVING	SEE CIVIL AND SPECIFICATIONS FOR ADDITIONAL REQUIREMENTS.
	TOOLED SCORE JOINT	
	EXPANSION JOINT	
	CRUSHED ROCK SURFACING	SEE SPECIFICATIONS

GENERAL NOTES

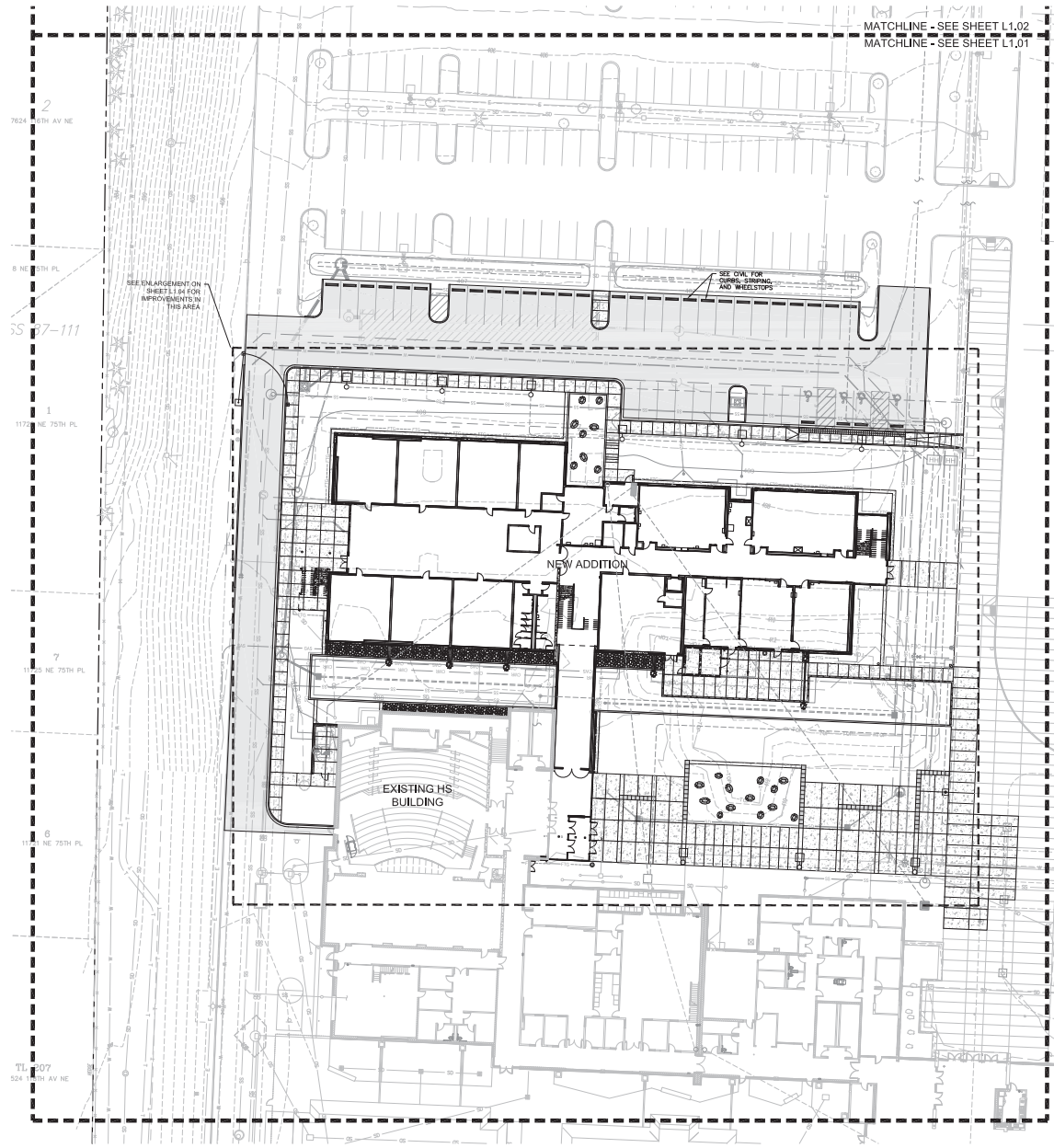
- 1.) DO NOT SCALE DRAWINGS.
- 2.) REFER TO CIVIL DRAWINGS FOR GRADING, UTILITY AND LAYOUT INFORMATION FOR ALL VEHICULAR AREAS.
- 3.) REFER TO ARCHITECTURAL FOR BUILDING GRID LAYOUT INFORMATION.
- 4.) VERIFY LOCATION OF ALL OVERHEAD AND UNDERGROUND UTILITIES BEFORE BEGINNING WORK.
- 5.) NOTIFY THE ARCHITECT IMMEDIATELY OF ANY DISCREPANCIES FOUND IN PLANS OR DEVIATIONS FROM DOCUMENTED ON-SITE CONDITIONS. FAILURE TO NOTIFY THE ARCHITECT IN A TIMELY MANNER AS SPECIFIED SHALL RESULT IN CONTRACTOR TAKING RESPONSIBILITY FOR ANY AND ALL REMEDIAL MEASURES REQUIRED.
- 6.) STRING DIMENSIONS OF SITE IMPROVEMENTS ARE FROM FACE OF BUILDING WALL, GRID LINE, OR BACK OF CURB ON PLAN. START NOTICES INDICATED ARE CLEAR DIMENSIONS (INSIDE TO INSIDE WALL FACE).
- 7.) WHERE DIMENSIONS ARE IN FEET ONLY, CONTRACTOR IS TO ASSUME THEY ARE 1" (E.G. 12' = 12'-0").
- 8.) MARK OR STAKE LOCATIONS OF FENCING, SITE WALLS, RAMPS, WALKS, SITE FURNITURE, AMEHC EQUIPMENT, ETC. FOR APPROVAL BY ARCHITECT, PER SPECIFICATIONS, PRIOR TO INSTALLATION.

SCALE: 1"=40'-0"

0' 20' 40' 80'

WEISMAN DESIGN GROUP

ARCHITECT
1801 12TH AVE
SEATTLE, WA 98101
206.461.1234
WWW.WEISMANDSGROUP.COM



architect,
MCDONNAN ARCHITECTS
civil engineer,
JACOBSON CONSULTING ENGINEERS
landscape architect,
WEDMAN DESIGN GROUP
structural engineer,
PCS STRUCTURAL SOLUTIONS
mechanical engineer,
ICE ENGINEERS
electrical engineer,
HARGIS ENGINEERS



projected,
LAKE WASHINGTON HIGH SCHOOL
ADDITION
city of,
LAKE WASHINGTON SCHOOL
DISTRICT #1, 1A
location,
EVERETT, WA

Project No. 1815.000
SITE PLAN

issued,
SCHEMATIC DESIGN 30 JULY 18
SCHEMATIC DEVELOPMENT 02 NOV 18
PERMIT SET 25 JAN 19
RED SET 01 MAR 19

revisions,
ADDITIONAL PERMIT RESUBMITTAL 26 APR 19

drawn,
city
checked,
we

SCALE: 1"=30'-0"
0' 10' 20' 40'
WEISMANDESIGNGROUP
L1.01