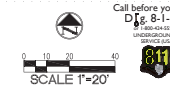
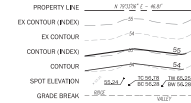


PLAN



Legend



architect
MORRISMAN ARCHITECTS
civil engineer
JACKSON CONSULTING
ENGINEERS
landscape architect
WEISSMAN DESIGN GROUP
structural engineer
PDS STRUCTURAL SOLUTIONS
mechanical engineer
BCE ENGINEERS
electrical engineer
HARRIS ENGINEERS



PROJECT
LAKE WASHINGTON HIGH SCHOOL
ADDITION
CLIENT
LAKE WASHINGTON SCHOOL
DISTRICT No. 42A
LOCATION
KIRKLAND, WA

Project No. 1810.000
GRADING PLAN

ISSUED
SCHEMATIC DESIGN 20 JULY 18
DESIGN DEVELOPMENT 02 NOV 18
PERMIT SET 25 JAN 19
BID SET 01 MAR 19

REVISION
ADDENDUM 2 22 MAR 19
ADDENDUM A/ 26 APR 19
TYPING RECOMMENDATION

DRAWN
CHECKED
JUL

SHEET
C3.02

ORIGINAL SHEET IS 36" x 48"
copyright 2019
all rights reserved

MATCHLINE - SEE SHEET C3.01

L 77
16TH AVE NE

PLAN SET



Call before you dig
Dig 8-1-1
800-444-4333
TOLL FREE
800-444-4333
TOLL FREE
800-444-4333
TOLL FREE

architect
MORRISMAN ARCHITECTS
civil engineer
JACKSON CONSULTING
ENGINEERS
landscape architect
WEDMAN DESIGN GROUP
structural engineer
PCS STRUCTURAL SOLUTIONS
mechanical engineer
BCE ENGINEERS
electrical engineer
HARRIS ENGINEERS

Legend

- PROPERTY LINE $\frac{1}{8}" = 10' \quad \frac{1}{4}" = 20'$
- EX CONTOUR (INDG)
- EX CONTOUR
- CONTOUR (INDG)
- CONTOUR
- SPOT ELEVATION $\frac{1}{8}" = 1' \quad \frac{1}{4}" = 2'$
- GRADE BREAK $\frac{1}{8}" = 1' \quad \frac{1}{4}" = 2'$



PROJECT
LAKE WASHINGTON HIGH SCHOOL
ADDITION
CLIENT
LAKE WASHINGTON SCHOOL
DISTRICT No. 40A
LOCATION
KIRKLAND, WA

Project No. 1810.000
**GRADING PLAN -
ALTERNATE**

ISSUED
SCHEMATIC DESIGN 20 JULY 18
DESIGN DEVELOPMENT 02 NOV 18
PERMIT SET 25 JAN 19
BID SET 01 MAR 19

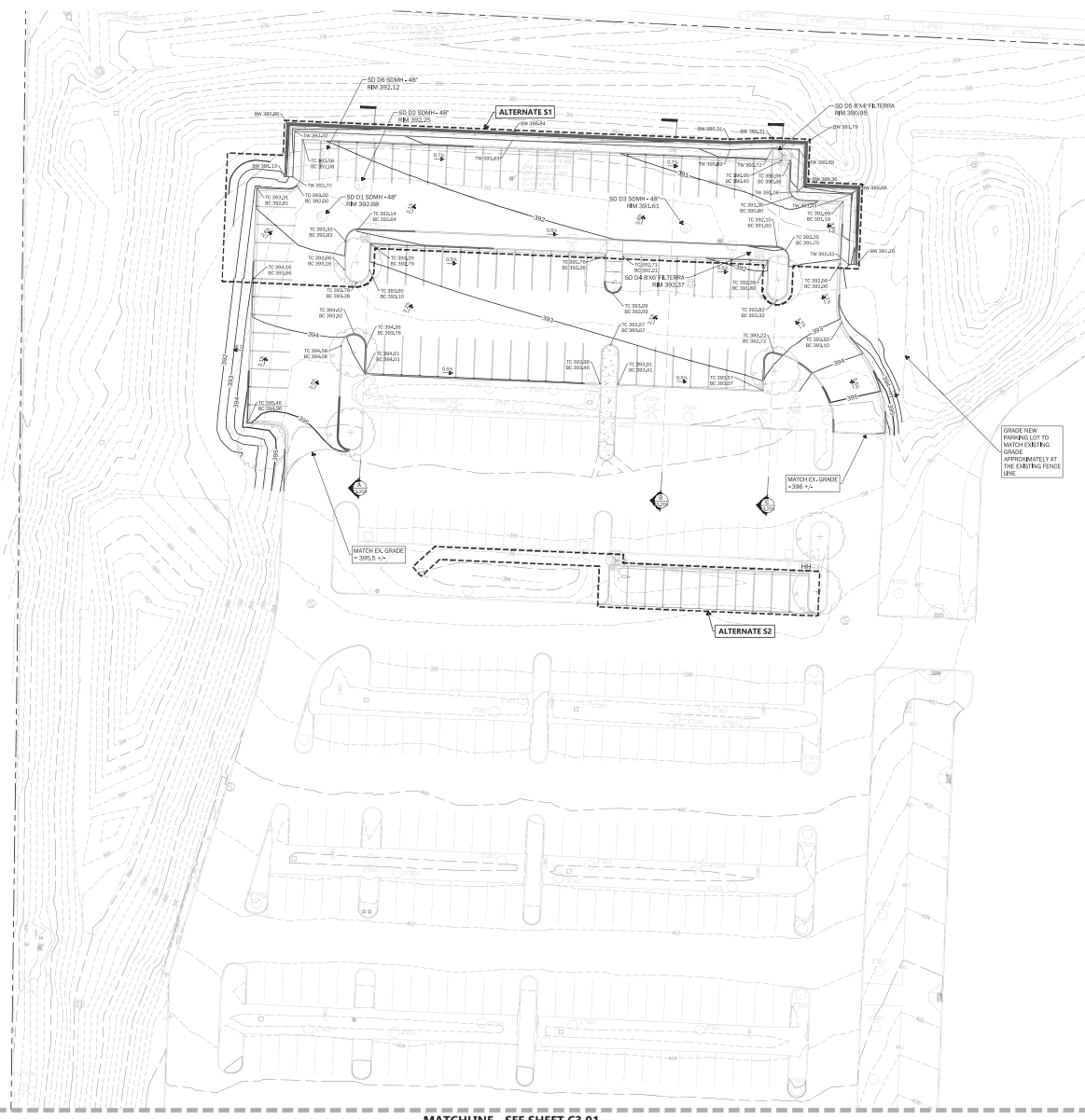
REVISION
ADDENDUM 2 22 MAR 19
ADDENDUM A/ 26 APR 19
PERMIT RESUBMITTAL

DRAWN
JUL
CHECKED

SHEET
C3.02A

L 77
16TH AVE NE

ORIGINAL SHEET IS 36" x 48"
copyright 2019
all rights reserved



MATCHLINE - SEE SHEET C3.01