

Site Calculations

CAMPUS PARKING				ACCESSIBLE (IRC 71106.1)				VAN ACCESSIBLE			
REQD	MOBILITY	DISABLED	ADN	TOTAL	REQD	MOBILITY	DISABLED	ADN	TOTAL	REQD	ADN
520*	100	121	400*	600	12	18	3	4	19	4	7
*REQUIRED STALLS AS NOTED BY TRAFFIC IMPACT ANALYSIS SUBMITTED AS PART OF MASTERPLAN SUBMITTAL TO CITY OF ARLAND (ENC 105.3)				*TOTAL STALLS ADDED AFTER EXISTING PORTABLES (NC) ARE REMOVED							
BICYCLE PARKING				REQD	PROVIDED						
				112	100	100	100	100	100		
				40	21	40	40	40	40		

SITE PLAN GENERAL NOTES:

- SEE CIVIL DRAWINGS FOR HORIZONTAL CONTROL, GRADING, PAVING AND CURBS, STRIPING AND UTILITIES.
- SEE LANDSCAPE DRAWINGS FOR FENCING, PLANTING, AND IRRIGATION.
- SEE ELECTRICAL DRAWINGS FOR SITE LIGHTING AND SITE ELECTRICAL UTILITIES.
- DIMENSIONS ARE PROVIDED FOR REFERENCE ONLY. SEE CIVIL FOR BUILDING FOOTPRINTS.

Legend

- ASPHALT PAVING
- CONCRETE PAVING
- ACCESSIBLE EXIT
- ACCESSIBLE PATH OF TRAVEL

architect
MCBRANNAN ARCHITECTS
civil engineer
JACKSON CONSULTING
ENGINEERS
landscape architect
WESMAN DESIGN GROUP
structural engineer
PCS STRUCTURAL SOLUTIONS
MECHANICAL ENGINEER
BCE ENGINEERS
electrical engineer
HARGIS ENGINEERS

REGISTERED ARCHITECT
MATTHEW C. LANE
STATE OF WASHINGTON

PROJECT
LAKE WASHINGTON HIGH SCHOOL
ADDITION
SCHOOL
LAKE WASHINGTON SCHOOL
DISTRICT No. 40A
LOCATION
KIRKLAND, WA

Project No. 181000
ARCHITECTURAL
SITE PLAN

ISSUED
SCHEMATIC DESIGN 30 JULY 18
DESIGN DEVELOPMENT 02 NOV 18
MASTER PLAN 27 NOV 18
SUBMITTAL
PHI PERMIT SET 25 JAN 19

revision

drawn
checked
sheet
A1.01A



Scale: 1/2" = 1' 0"



Scale: 1/16" = 1'-0"

ORIGINAL SHEET IS 30" x 42"
copyright 2019
all rights reserved

1. ALL OCCUPANCIES ARE "E" UNLESS NOTED OTHERWISE.
2. PATH OF EXIT TRAVEL TO BE IDENTIFIED BY EXIT SIGNS, PER BC103.15.
3. DOORS ON 1ST AND 2ND FLOOR TO BE IDENTIFIED BY EXIT SIGNS AND PLANS FOR EXIT SIGNAGE.
4. SEE SHEET A-10 FOR BUILDING ASSEMBLY DETAILS.
5. ACCESSORY USES ARE NOT INCLUDED IN OCCUPANCY CALCULATIONS.
6. FIRE EXTINGUISHER LOCATIONS SHOWN ON OVERALL FLOOR PLAN SHEETS.
7. PANIC HARDWARE SHALL BE PROVIDED ON ALL EXIT DOORS SERVING ROOMS OR SPACES WITH AN OCCUPANCY OF 50 OR GREATER, PER BC 103.1.5.
8. SEE GC 10 FOR BUILDING SEPARATION DIAGRAM.
9. IF ALL FIRE BARRIERS, FIRE PARTITIONS AND GLASS PARTITIONS / BARRIERS PROVIDE PERMANENT IDENTIFICATION AT ALL ACCESSIBLE CONVEYED SPACES, REFER TO SIGNAGE SHEET.
10. PROVIDE "MAXIMUM OCCUPANT" LOAD SIGNAGE AT ALL ASSEMBLY SPACES WHERE OCCUPANT LOAD SIGNAGE IS OCCUPANTS, SEE SIGNAGE SHEET(S) FOR ADDITIONAL INFORMATION.
11. E* - ACCESSORY STORAGE SPACES USED FOR STORAGE PURPOSES THAT IS LESS THAN 100 SQUARE FEET AND ACCESSORY TO ANOTHER OCCUPANCY SHALL BE CLASSIFIED AS PART OF THE OCCUPANCY.

Diagram illustrating the fields of a Classroom Exit Sign:

- ROOM NAME: CLASSROOM
- AREA AND OCCUPANCY TYPE: 1000 SF
- OCCUPANT LOAD: 120 = 33
- FACTOR AND TOTAL OCCUPANT LOAD: 1:1
- NO. OF REQUIRED EXITS (AND EXITS PROVIDED):

1 HOUR FIRE BARRIER 

PATH OF EXIT TRAVEL

REQUIRED EXIT FROM

INDIVIDUAL ROOM WITH OCCUPANT LOAD

EXIT DISCHARGE WITH

EXIT DOOR DESIGNATION

0-RATED CORRIDOR (T1018.1) &/OR HALLWAY, AS INDICATED. NO SPECIAL CONSTRUCTION REQUIRED

1 HOUR RATED FLOOR/CEILING ASSEMBLY

INCIDENTAL USE THAT REQUIRES
CONSTRUCTION TO RESIST THE
PASSAGE OF SMOKE (PER IBC 710)

7924 REGISTERED ARCHITECT
MATTHEW C. LANE
STATE OF WASHINGTON

Project No. 1810.000

CODE SUMMARY -
FIRST FLOOR
EGRESS DIAGRAM

issued_	
SCHEMATIC DESIGN	30 JULY 1988
DESIGN DEVELOPMENT	02 NOV 1988
PERMIT SET	01 MAR 1989
revision	

4100000

— — — — —

sheet
G0.11B

DATE

architect,
MCKINNON ARCHITECTS
civil engineer,
ANDERSON CONSULTING
ENGINEERS
landscape architect,
WESMAN DESIGN GROUP
structural engineer,
PCS STRUCTURAL SOLUTIONS
ENGINEERS
mechanical engineer,
BICE ENGINEERS
electrical engineer,
HARGIS ENGINEERS



Project No. 181000
LAKES WASHINGTON HIGH SCHOOL
ADDITION
CITY OF
LAKES WASHINGTON SCHOOL
DISTRICT No. 424
LOCATION,
KIRKLAND, WA

Project No. 181000
ARCHITECTURAL
SITE PLAN -
REFERENCE ONLY

ISSUED
SCHEMATIC DESIGN 20 JULY 18
DESIGN DEVELOPMENT 02 NOV 18
PERMIT SET 01 MAR 19
revision

drawn

checked

sheet

A1.01B

Legend

- EXISTING BUILDING TO REMAIN
- ASPHALT PAVING
- CONCRETE PAVING
- ACCESSIBLE EXIT
- ACCESSIBLE PATH OF TRAVEL

SITE PLAN GENERAL NOTES:

- SEE CIVIL DRAWINGS FOR HORIZONTAL CONTROL, GRADING, PAVING AND CURBS, STRIPING, AND UTILITIES.
- SEE LANDSCAPE DRAWINGS FOR FENCING, PLANTING, AND IRRIGATION.
- SEE ELECTRICAL DRAWINGS FOR SITE LIGHTING AND SITE ELECTRICAL UTILITIES.
- DIMENSIONS ARE PROVIDED FOR REFERENCE ONLY. SEE CIVIL FOR BUILDING WORKPOINTS.

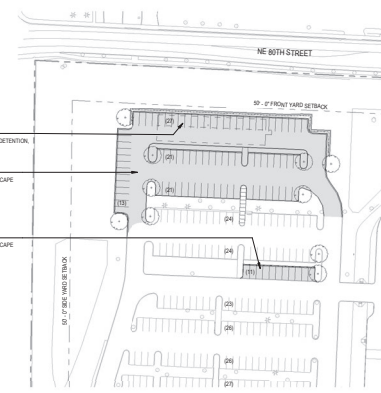
Site Calculations

CAMPUS PARKING (BASE BID)					ACCESSIBLE (IBC TYPE 1)					VAN ACCESSIBLE				
REQD	IMPROVED	EXIST	DELETED	TOTAL	REQD	IMPROVED	EXIST	DELETED	TOTAL	REQD	IMPROVED	EXIST	DELETED	TOTAL
120P	120	121	-14P	106	18	18	0	-4	14	4	7	1	-2	6
CAMPUS PARKING (ALTERNATE)					ACCESSIBLE (IBC TYPE 1)					VAN ACCESSIBLE				
REQD	IMPROVED	EXIST	DELETED	TOTAL	REQD	IMPROVED	EXIST	DELETED	TOTAL	REQD	IMPROVED	EXIST	DELETED	TOTAL
120P	120	121	-14P	106	18	18	0	-4	14	4	7	1	-2	6

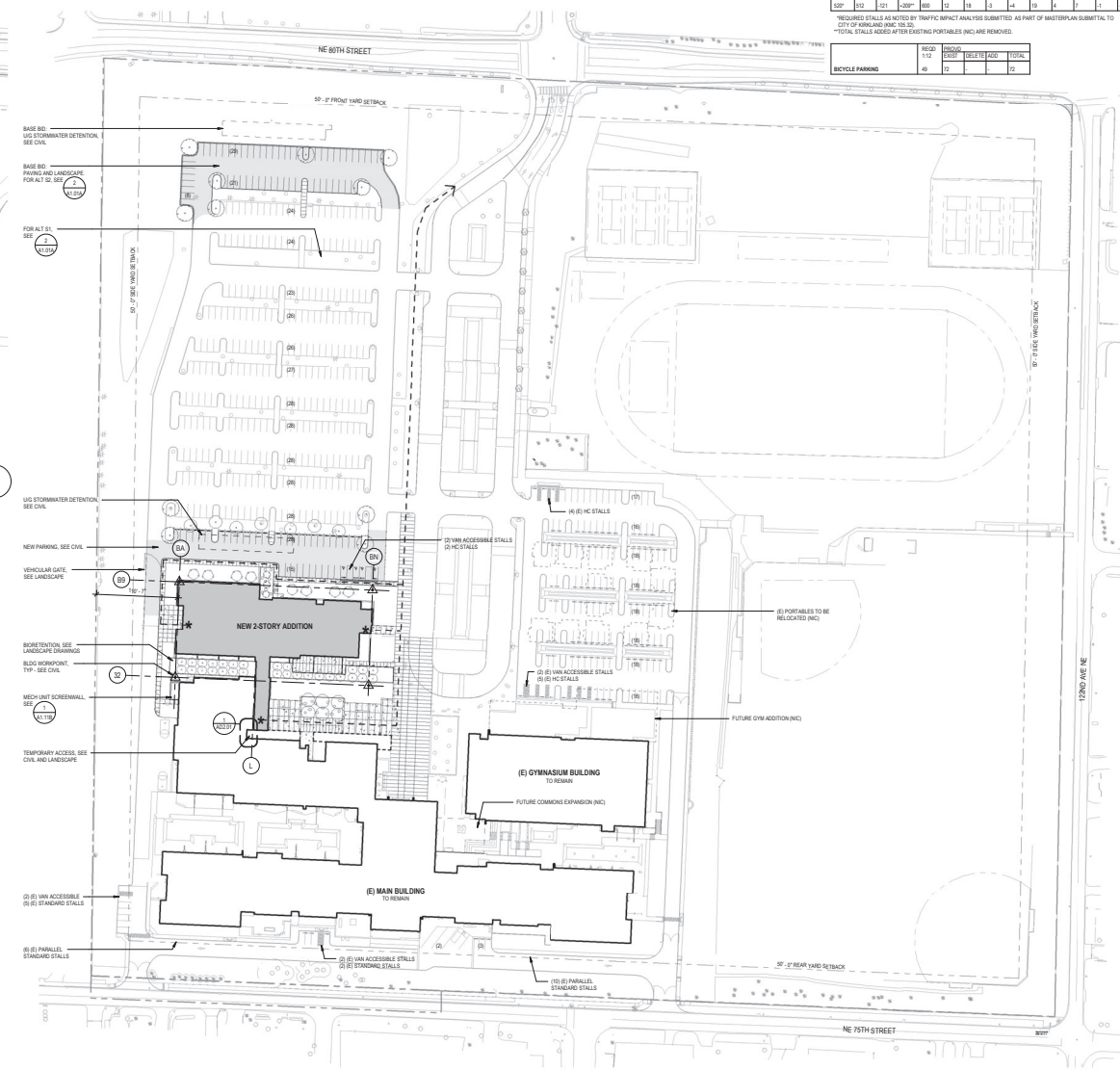
*REQUIRES STALLS AS NOTED BY TRAFFIC IMPACT ANALYSIS SUBMITTED AS PART OF MASTERPLAN SUBMIT TAL TO CITY OF KIRKLAND AND 18.32

*TOTAL STALLS ADDED AFTER EXISTING PORTABLES (INC) ARE REMOVED.

BICYCLE PARKING				
REQD	EXIST	DELETED	EXIST	TOTAL
40	72	0	0	0

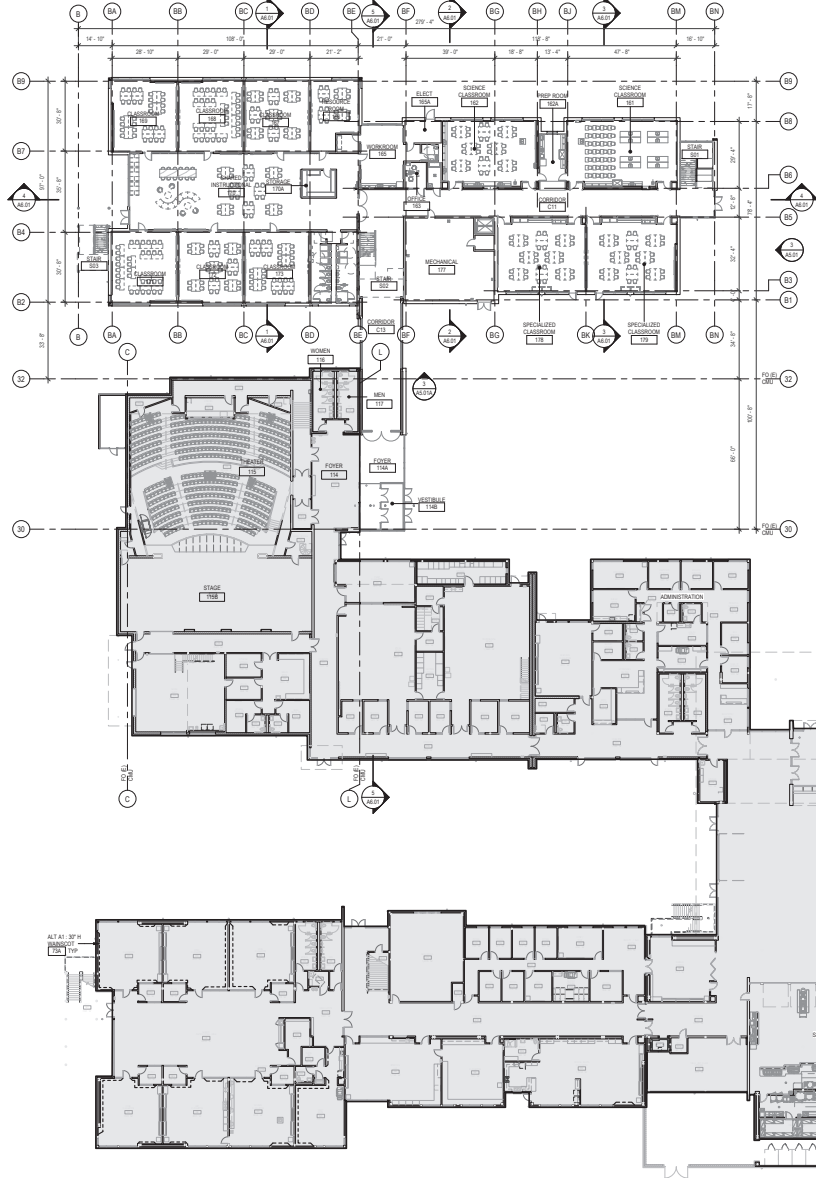


PARTIAL ARCHITECTURAL SITE PLAN - ALTERNATES 2



OVERALL ARCHITECTURAL SITE PLAN - BASE BID 1

ORIGINAL SHEET IS 36" x 48"
CADD FILE: 181000
ALL RIGHTS RESERVED



OVERALL FLOOR PLAN GENERAL NOTES (SHEETS A2.01-A2.03)

1. THESE GENERAL NOTES APPLY TO ALL OVERALL FLOOR PLAN DRAWINGS.
2. FIRST FLOOR ELEVATION DATUM: 0'-0" (+10.0') PER CIVIL.
3. FURNITURE SHOWN FOR REFERENCE ONLY.

OVERALL FLOOR PLAN LEGEND

- EXISTING CONDITION (NC)
- NEW SCOPE
- ALTERNATE A1

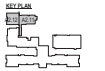
DATE: 08/18/18

architect
MCDONNAN ARCHITECTS
civil engineer
JACKSON CONSULTING
ENGINEERS
landscape architect
WEDMAN DESIGN GROUP
structural engineer
PCS STRUCTURAL SOLUTIONS
mechanical engineer
BCE ENGINEERS
electrical engineer
HARGIS ENGINEERS



PROJECT
LAKE WASHINGTON HIGH SCHOOL
ADDITION
CITY & COUNTY
LAKE WASHINGTON SCHOOL
DISTRICT No. 404
LOCATION
KIRKLAND, WA

Project No. 181000
OVERALL FIRST
FLOOR PLAN



ISSUED
SCHEMATIC DESIGN 20 JULY 18
DESIGN DEVELOPMENT 02 NOV 18
PERMIT SET 01 MAR 19
REVISION

DRAWN
SL
CHECKED
ML

sheet
A2.01

OVERALL FIRST FLOOR PLAN

1"=20'-0"



architect
MCBRANNAN ARCHITECTS
civil engineer
JACOBSON CONSULTING
ENGINEERS
landscape architect
WEEDMAN DESIGN GROUP
structural engineer
PCS STRUCTURAL SOLUTIONS
mechanical engineer
BCE ENGINEERS
electrical engineer
HARGIS ENGINEERS



Project:
LAKE WASHINGTON HIGH SCHOOL
ADDITION
CITY:
LAKE WASHINGTON SCHOOL
DISTRICT No. 424
Location:
KIRKLAND, WA

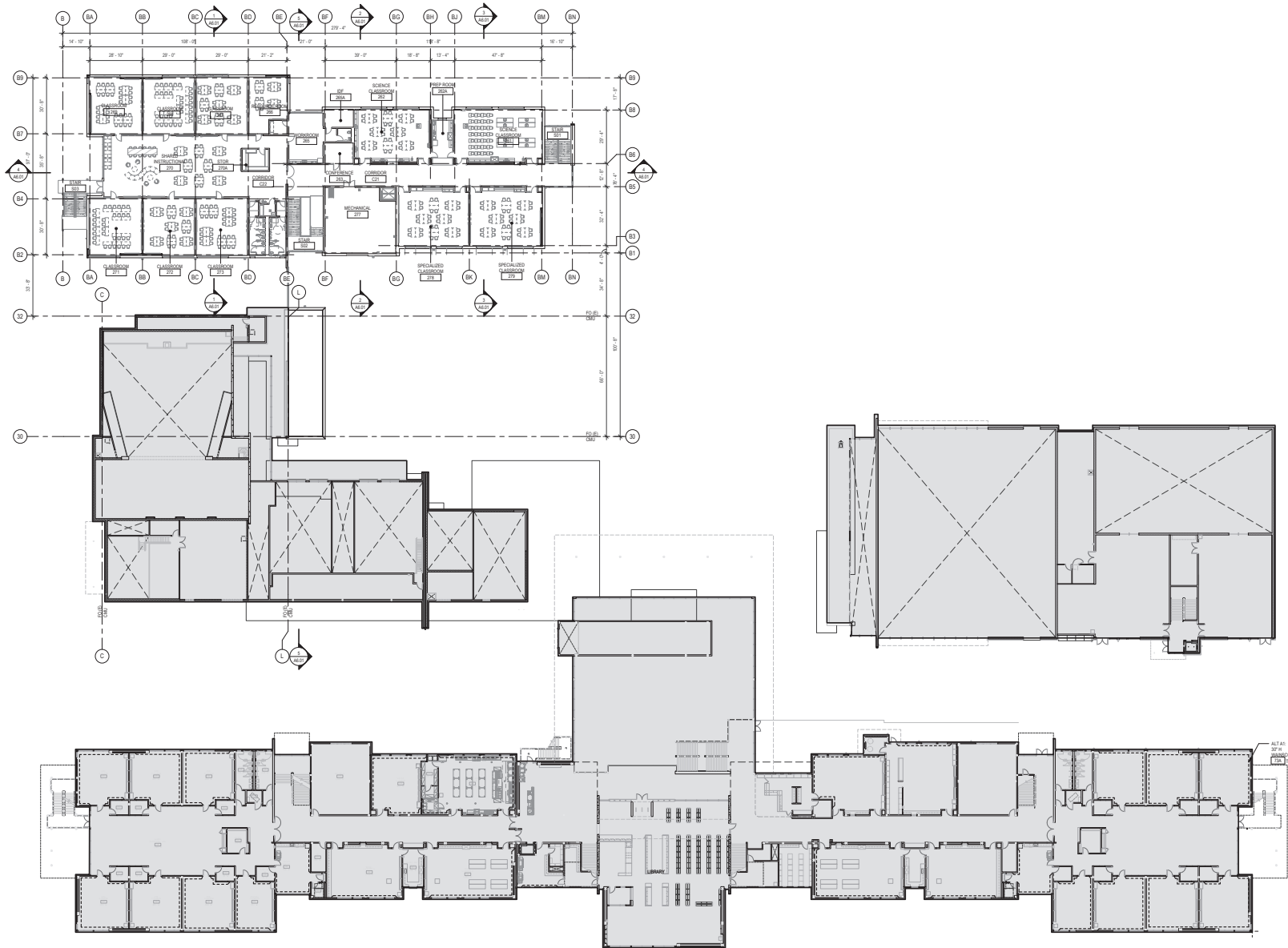
Project No. 181000
**OVERALL
SECOND FLOOR
PLAN**



Issued:
SCHEMATIC DESIGN 20 JULY 18
DESIGN DEVELOPMENT 02 NOV 18
PERMIT SET 01 MAR 19
revision

drawn
SL
checked
ML

sheet
A2.02



OVERALL SECOND FLOOR PLAN
1"=30'



PARTIAL FLOOR PLAN GENERAL NOTES: (SHEETS A2.11 - A2.24)

1. THESE GENERAL NOTES APPLY TO ALL PARTIAL FLOOR PLAN DRAWINGS.
2. GRIDLINES ARE CENTERLINE OF STRUCTURE UNLESS NOTED OTHERWISE.
3. WALL DIMENSIONS ARE TO FACE OF STUD UNLESS NOTED OTHERWISE.
4. SEE SHEET A2.12 FOR WALL TYPES.
5. SEE SHEET A2.13 FOR WALL TYPES.
6. SEE SHEET A2.14 FOR WALL TYPES.
7. SEE SHEET A2.15 FOR WALL TYPES.
8. SEE SHEET A2.16 FOR WALL TYPES.
9. SEE SHEET A2.17 FOR WALL TYPES.
10. SEE SHEET A2.18 FOR WALL TYPES.
11. SEE SHEET A2.19 FOR WALL TYPES.
12. SEE SHEET A2.20 FOR WALL TYPES.
13. SEE SHEET A2.21 FOR WALL TYPES.
14. SEE SHEET A2.22 FOR WALL TYPES.
15. SEE SHEET A2.23 FOR WALL TYPES.
16. SEE SHEET A2.24 FOR WALL TYPES.

architect
MCDONNAN ARCHITECTS
civil engineer
JACKSON CONSULTING
engineers
landscape architect
WESMAN DESIGN GROUP
structural engineer
PCS STRUCTURAL SOLUTIONS
mechanical engineer
BCE ENGINEERS
electrical engineer
HARGIS ENGINEERS



PROJECT
LAKE WASHINGTON HIGH SCHOOL
ADDITION
SCHOOL
LAKE WASHINGTON SCHOOL
DISTRICT No. 404
LOCATION
KIRKLAND, WA

Project No: 181000
PARTIAL FIRST FLOOR PLAN



ISSUED
SCHEMATIC DESIGN 02 JULY 18
DESIGN DEVELOPMENT 02 NOV 18
PERMIT SET 01 MAR 19
revision

drawn
SL
checked
ML

sheet
A2.11

DATE

architect
MCBRANNAN ARCHITECTS
civil engineer
JACKSON CONSULTING
ENGINEERS
landscape architect
WEDMAN DESIGN GROUP
structural engineer
PCS STRUCTURAL SOLUTIONS
mechanical engineer
BCE ENGINEERS
electrical engineer
HARGIS ENGINEERS



PROJECT
LAKE WASHINGTON HIGH SCHOOL
ADDITION
SCHOOL
LAKE WASHINGTON SCHOOL
DISTRICT No. 404
LOCATION
KIRKLAND, WA

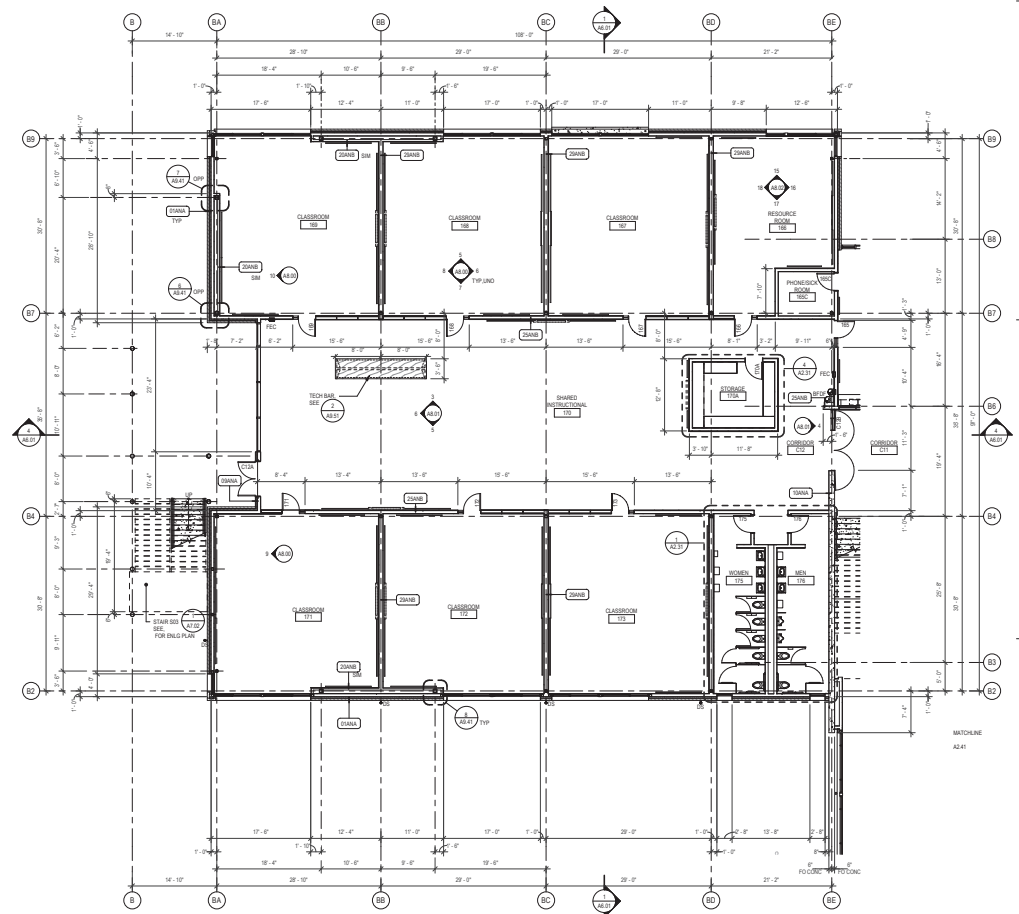
Project No. 101000
PARTIAL FIRST FLOOR PLAN



ISSUED
SCHEMATIC DESIGN 20 JULY 18
DESIGN DEVELOPMENT 02 NOV 18
PERMIT SET 01 MAR 19
REVISION

DRAWN
SL
CHECKED
HL

sheet
A2.12



PARTIAL FIRST FLOOR PLAN
1/8" = 1'-0"



architect
MCBRANNAN ARCHITECTS
civil engineer
JACKSON CONSULTING
ENGINEERS
landscape architect
WEEDMAN DESIGN GROUP
structural engineer
PCS STRUCTURAL SOLUTIONS
mechanical engineer
BCE ENGINEERS
electrical engineer
HARGIS ENGINEERS



PROJECT
LAKE WASHINGTON HIGH SCHOOL
ADDITION
SCHOOL
LAKE WASHINGTON SCHOOL
DISTRICT No. 41A
LOCATION
KIRKLAND, WA

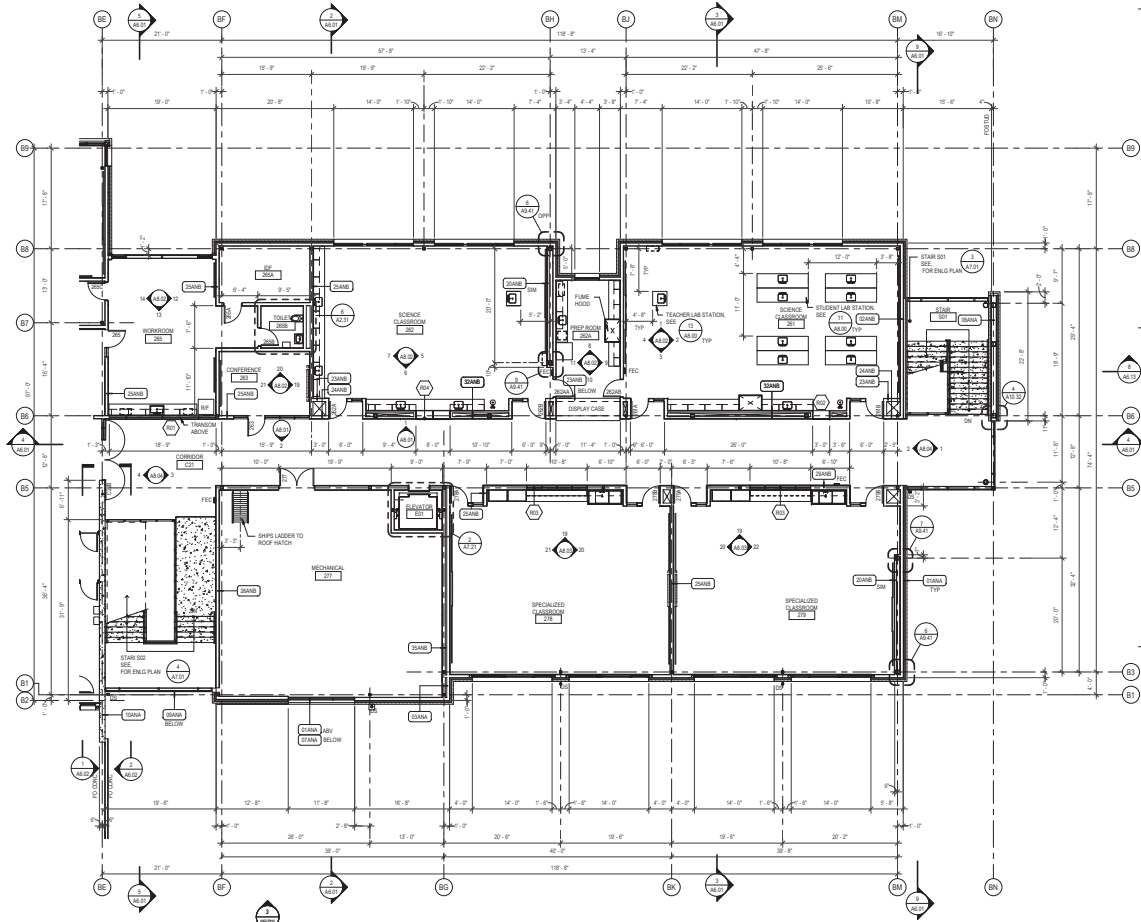
Project No. 181000
**PARTIAL SECOND
FLOOR PLAN**



ISSUED
SCHEMATIC DESIGN
DESIGN DEVELOPMENT
PERMIT SET
revision
30 JULY 18
02 NOV 18
01 MAR 19

DRAWN
SL
CHECKED
ML

SHEET
A2.21



PARTIAL SECOND FLOOR PLAN



architect
MCBRANNAN ARCHITECTS
civil engineer
JACKSON CONSULTING
ENGINEERS
landscape architect
WEISMAN DESIGN GROUP
structural engineer
PCS STRUCTURAL SOLUTIONS
mechanical engineer
BCE ENGINEERS
electrical engineer
HARDIS ENGINEERS



Project:
LAKE WASHINGTON HIGH SCHOOL
ADDITION
Client:
LAKE WASHINGTON SCHOOL
District No. 424
Location:
KIRKLAND, WA

Project No: 161000
**PARTIAL SECOND
FLOOR PLAN**



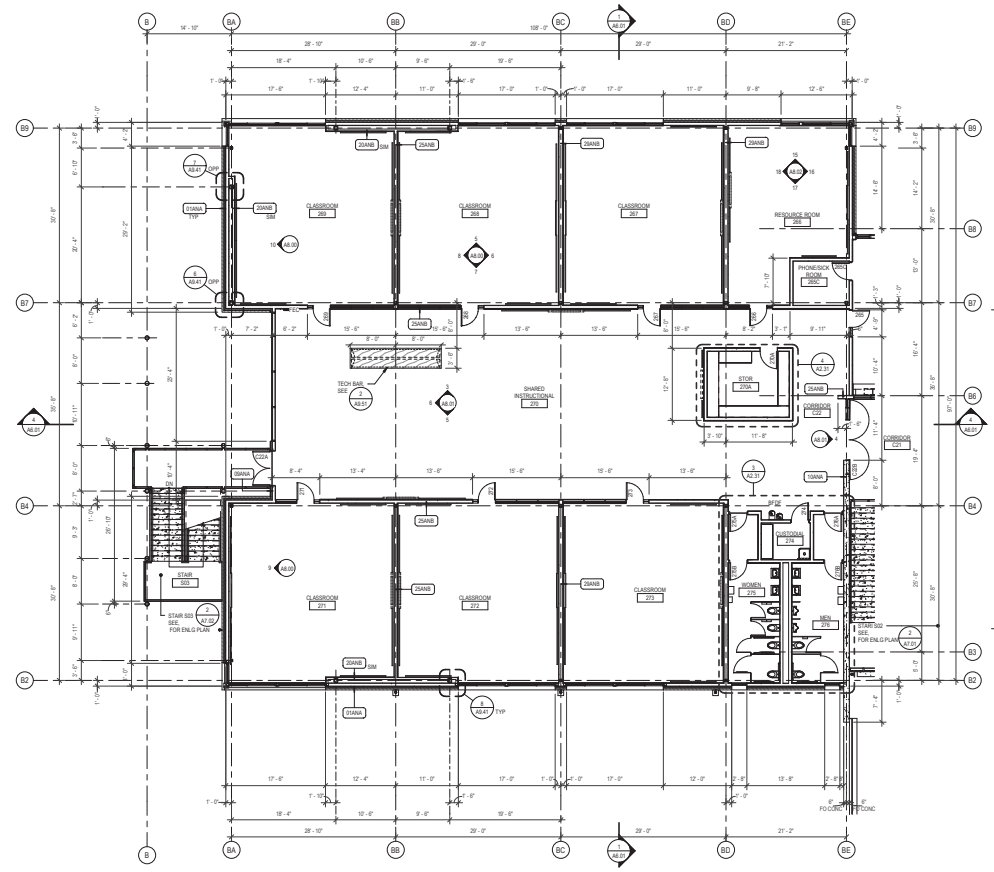
Issued:
Schematic Design 30 JULY 18
Design Development 02 NOV 18
Permit Set 01 MAR 19
revision

drawn
SL

checked
SL

sheet

A2.22

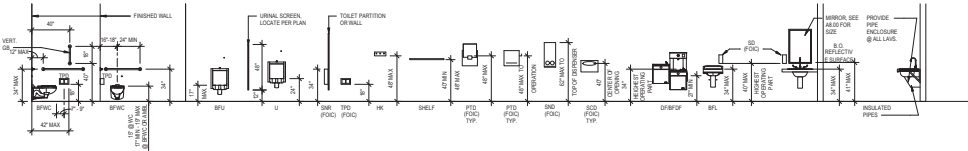


PARTIAL SECOND FLOOR PLAN
1/8" = 1'-0"



ACCESSORY KEY

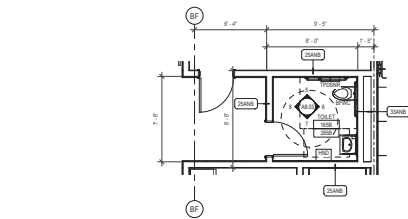
AMB	AMBULATORY WATER CLOSET	HK	HOOK STRIP	SMR	SANITARY WIPER RECEPTACLE
BPWC	BARRED FREE WATER CLOSET	HAD	HAND DISPENSER	TRD	TOILET PAPER DISPENSER
BPWF	BARRED FREE DRINKING FOUNTAIN	LAV	LAVATORY	TR	TRASH RECEPTACLE
BSL	BARRED FREE SANITARY	MR	MIRROR	WC	WATER CLOSET
BPFS	BARRED FREE SHOWER	MSSH	MIRROR W/ STAINLESS STEEL SHELF	WF	WASH FOUNTAIN
BPV	BARRED FREE VENDING	MSP	MIRROR BACK		
CH	COAT HOOK	MHH	MIRROR/COMB HOLDER		
CT	CHANGING TABLE	PTD	PAPER TOWEL DISPENSER		
DF	DRINKING FOUNTAIN	PTD	PAPER TOWEL DISPENSER		
FD	FLOOR DRAIN	PRR	PAPER TOWEL RECEPTACLE		
GB	GRADE BAR	SCD	SEAT COVER DISPENSER		
		SD	SOAP DISPENSER		



TYPICAL RESTROOM ACCESSORY MOUNTING HEIGHTS

Scale: 1/4" = 1'-0"

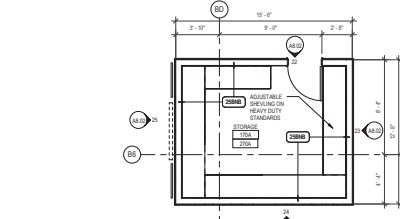
5



ENLARGED PLAN

Scale: 1/4" = 1'-0"

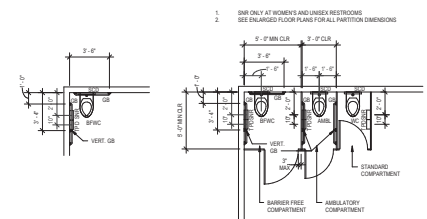
6



ENLARGED PLAN

Scale: 1/4" = 1'-0"

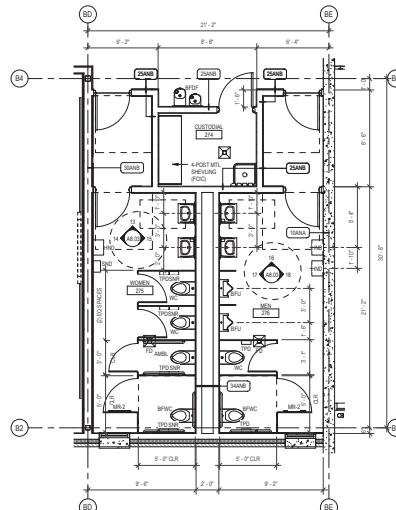
4



TYPICAL WATER CLOSET PLAN

Scale: 1/4" = 1'-0"

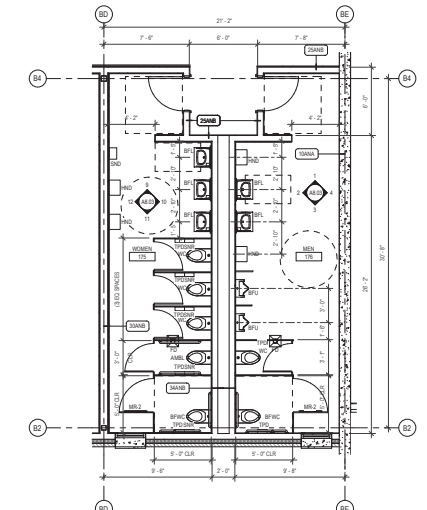
2



ENLARGED PLAN

Scale: 1/4" = 1'-0"

3



ENLARGED PLAN

Scale: 1/4" = 1'-0"

1

SHEET NOTES

1. SEE (S) FOR TYP ACCESSORY MOUNTING HEIGHTS.
2. SEE (S) FOR TYP WATER CLOSET PLANS.
3. SEE FINISH PLANS FOR WALL TILE COLORS.
4. CONTRACTOR SHALL PROVIDE SOLID TREATED WOOD BLOCKING BEHIND ALL WALL MOUNTED ACCESSORIES.
5. NOT ALL ACCESSORIES MAY BE USED.
6. SEE PLANS FOR PLUMBING FIXTURES AND FLOOR DRAINS.
7. SEE INTERIOR ELEVATIONS FOR FINISHES AND MATERIALS.
8. SEE (S) FOR TYP FLOOR DRAIN DETAIL.
9. PROVIDE WALL ACCESS PANEL AT ALL PLUMBING WALLS.
10. DIMENSIONS FROM FINISH FACE UNLESS SHOWN.

architect
MCDONNAN ARCHITECTS
civil engineer
ANDERSON CONSULTING
ENGINEERS
landscape architect
WEDMAN DESIGN GROUP
structural engineer
PCS STRUCTURAL SOLUTIONS
mechanical engineer
BCE ENGINEERS
electrical engineer
HARGIS ENGINEERS

REGISTERED
ARCHITECT
MCDONNAN ARCHITECTS
STATE OF WASHINGTON

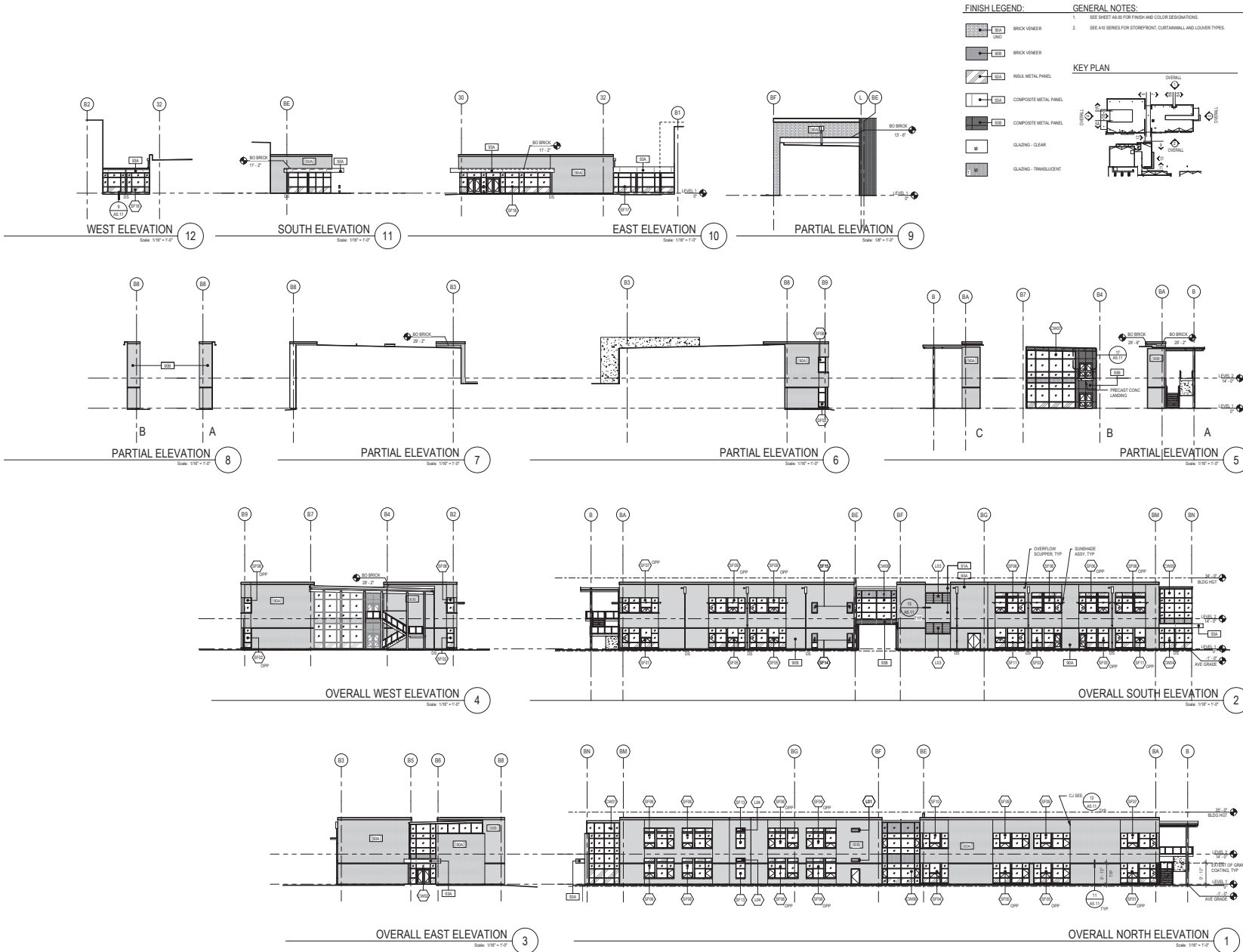
PROJECT
LAKE WASHINGTON HIGH SCHOOL
ADDITION
DISTRICT NO. 40A
LOCATION
KIRKLAND, WA

Project No. 181000
ENLARGED
FLOOR PLANS

ISSUED
SCHEMATIC DESIGN 20 JULY 18
DESIGN DEVELOPMENT 02 NOV 18
PERMIT SET 01 MAR 19
REVISION

DRAWN
SL
CHECKED
SL

sheet
A2.31



architect
MCDONNAN ARCHITECTS
civil engineer
JACKSON CONSULTING
ENGINEERS
landscape architect
WESMAN DESIGN GROUP
structural engineer
PCS STRUCTURAL SOLUTIONS
mechanical engineer
BEE ENGINEERS
electrical engineer
HARGIS ENGINEERS



PROJECT
LAKE WASHINGTON HIGH SCHOOL
ADDITION
1114 N.E.
LAKE WASHINGTON SCHOOL
DISTRICT NO. 41A
LOCATION
KIRKLAND, WA

Project No. 181000
**EXTERIOR
ELEVATIONS**

ISSUED
SCHEMATIC DESIGN
DESIGN DEVELOPMENT
PERMIT SET

30 JULY 18
03 NOV 18
01 MAR 19

REVISION

DRAWN
BES

CHECKED
HE

SHEET
A5.01

