

Wetland name or number B

H 1.5. Special habitat features: Check the habitat features that are present in the wetland. <i>The number of checks is the number of points.</i> <input type="checkbox"/> Large, downed, woody debris within the wetland (> 4 in diameter and 6 ft long). <input type="checkbox"/> Standing snags (dbh > 4 in) within the wetland <input type="checkbox"/> Undercut banks are present for at least 6.6 ft (2 m) and/or overhanging plants extends at least 3.3 ft (1 m) over a stream (or ditch) in, or contiguous with the wetland, for at least 33 ft (10 m) <input type="checkbox"/> Stable steep banks of fine material that might be used by beaver or muskrat for denning (> 30 degree slope) OR signs of recent beaver activity are present (<i>cut shrubs or trees that have not yet weathered where wood is exposed</i>) <input type="checkbox"/> At least ¼ ac of thin-stemmed persistent plants or woody branches are present in areas that are permanently or seasonally inundated (<i>structures for egg-laying by amphibians</i>) <input type="checkbox"/> Invasive plants cover less than 25% of the wetland area in every stratum of plants (<i>see H 1.1 for list of strata</i>)		0
Total for H 1	Add the points in the boxes above	6

Rating of Site Potential If score is: 15-18 = H 7-14 = M X 0-6 = L Record the rating on the first page

H 2.0. Does the landscape have the potential to support the habitat functions of the site?		
H 2.1. Accessible habitat (include only habitat that directly abuts wetland unit). Calculate: % undisturbed habitat <u>0</u> + [(% moderate and low intensity land uses)/2] <u>16.5</u> = <u>16.5</u> % If total accessible habitat is: > 1/3 (33.3%) of 1 km Polygon points = 3 20-33% of 1 km Polygon points = 2 10-19% of 1 km Polygon points = <u>1</u> < 10% of 1 km Polygon points = 0		1
H 2.2. Undisturbed habitat in 1 km Polygon around the wetland. Calculate: % undisturbed habitat <u>0</u> + [(% moderate and low intensity land uses)/2] <u>16.5</u> = <u>22.5</u> % Undisturbed habitat > 50% of Polygon points = 3 Undisturbed habitat 10-50% and in 1-3 patches <u>←</u> points = <u>2</u> Undisturbed habitat 10-50% and > 3 patches points = 1 Undisturbed habitat < 10% of 1 km Polygon points = 0		2
H 2.3. Land use intensity in 1 km Polygon: If > 50% of 1 km Polygon is high intensity land use points = (-2) ≤ 50% of 1 km Polygon is high intensity points = 0		-2
Total for H 2	Add the points in the boxes above	1

Rating of Landscape Potential If score is: 4-6 = H X 1-3 = M < 1 = L Record the rating on the first page

H 3.0. Is the habitat provided by the site valuable to society?		
H 3.1. Does the site provide habitat for species valued in laws, regulations, or policies? Choose only the highest score that applies to the wetland being rated. Site meets ANY of the following criteria: points <u>2</u> <input checked="" type="checkbox"/> It has 3 or more priority habitats within 100 m (see next page) <input type="checkbox"/> It provides habitat for Threatened or Endangered species (any plant or animal on the state or federal lists) <input type="checkbox"/> It is mapped as a location for an individual WDFW priority species <input type="checkbox"/> It is a Wetland of High Conservation Value as determined by the Department of Natural Resources <input type="checkbox"/> It has been categorized as an important habitat site in a local or regional comprehensive plan, in a Shoreline Master Plan, or in a watershed plan Site has 1 or 2 priority habitats (listed on next page) within 100 m points = 1 Site does not meet any of the criteria above points = 0		2
Rating of Value If score is: <u>X 2</u> = H <u>1</u> = M <u>0</u> = L Record the rating on the first page		

Wetland name or number B

WDFW Priority Habitats

Priority habitats listed by WDFW (see complete descriptions of WDFW priority habitats, and the counties in which they can be found, in: Washington Department of Fish and Wildlife. 2008. Priority Habitat and Species List. Olympia, Washington. 177 pp. <http://wdfw.wa.gov/publications/00165/wdfw00165.pdf> or access the list from here: <http://wdfw.wa.gov/conservation/phs/list/>)

Count how many of the following priority habitats are within 330 ft (100 m) of the wetland unit: **NOTE:** This question is independent of the land use between the wetland unit and the priority habitat.

- **Aspen Stands:** Pure or mixed stands of aspen greater than 1 ac (0.4 ha).
- ✓ **Biodiversity Areas and Corridors:** Areas of habitat that are relatively important to various species of native fish and wildlife (full descriptions in WDFW PHS report). *Lake WA*
- **Herbaceous Balds:** Variable size patches of grass and forbs on shallow soils over bedrock.
- **Old-growth/Mature forests:** Old-growth west of Cascade crest – Stands of at least 2 tree species, forming a multi-layered canopy with occasional small openings; with at least 8 trees/ac (20 trees/ha) > 32 in (81 cm) dbh or > 200 years of age. Mature forests – Stands with average diameters exceeding 21 in (53 cm) dbh; crown cover may be less than 100%; decay, decadence, numbers of snags, and quantity of large downed material is generally less than that found in old-growth; 80-200 years old west of the Cascade crest.
- **Oregon White Oak:** Woodland stands of pure oak or oak/conifer associations where canopy coverage of the oak component is important (full descriptions in WDFW PHS report p. 158 – see web link above).
- ✓ **Riparian:** The area adjacent to aquatic systems with flowing water that contains elements of both aquatic and terrestrial ecosystems which mutually influence each other.
- **Westside Prairies:** Herbaceous, non-forested plant communities that can either take the form of a dry prairie or a wet prairie (full descriptions in WDFW PHS report p. 161 – see web link above).
- ✓ **Instream:** The combination of physical, biological, and chemical processes and conditions that interact to provide functional life history requirements for instream fish and wildlife resources.
- **Nearshore:** Relatively undisturbed nearshore habitats. These include Coastal Nearshore, Open Coast Nearshore, and Puget Sound Nearshore. (full descriptions of habitats and the definition of relatively undisturbed are in WDFW report – see web link on previous page).
- **Caves:** A naturally occurring cavity, recess, void, or system of interconnected passages under the earth in soils, rock, ice, or other geological formations and is large enough to contain a human.
- **Cliffs:** Greater than 25 ft (7.6 m) high and occurring below 5000 ft elevation.
- **Talus:** Homogenous areas of rock rubble ranging in average size 0.5 - 6.5 ft (0.15 - 2.0 m), composed of basalt, andesite, and/or sedimentary rock, including riprap slides and mine tailings. May be associated with cliffs.
- ✗ **Snags and Logs:** Trees are considered snags if they are dead or dying and exhibit sufficient decay characteristics to enable cavity excavation/use by wildlife. Priority snags have a diameter at breast height of > 20 in (51 cm) in western Washington and are > 6.5 ft (2 m) in height. Priority logs are > 12 in (30 cm) in diameter at the largest end, and > 20 ft (6 m) long. *Present in ox-bow wetland assoc w/ Juanita Creek.*

Note: All vegetated wetlands are by definition a priority habitat but are not included in this list because they are addressed elsewhere.

Wetland name or number 3

CATEGORIZATION BASED ON SPECIAL CHARACTERISTICS

Wetland Type	Category
<i>Check off any criteria that apply to the wetland. Circle the category when the appropriate criteria are met.</i>	
SC 1.0. Estuarine wetlands Does the wetland meet the following criteria for Estuarine wetlands? — The dominant water regime is tidal, — Vegetated, and — With a salinity greater than 0.5 ppt Yes – Go to SC 1.1 No = Not an estuarine wetland	
SC 1.1. Is the wetland within a National Wildlife Refuge, National Park, National Estuary Reserve, Natural Area Preserve, State Park or Educational, Environmental, or Scientific Reserve designated under WAC 332-30-151? Yes = Category I No - Go to SC 1.2	Cat. I
SC 1.2. Is the wetland unit at least 1 ac in size and meets at least two of the following three conditions? — The wetland is relatively undisturbed (has no diking, ditching, filling, cultivation, grazing, and has less than 10% cover of non-native plant species. (If non-native species are <i>Spartina</i> , see page 25) — At least ¾ of the landward edge of the wetland has a 100 ft buffer of shrub, forest, or un-grazed or unmowed grassland. — The wetland has at least two of the following features: tidal channels, depressions with open water, or contiguous freshwater wetlands. Yes = Category I No = Category II	Cat. I Cat. II
SC 2.0. Wetlands of High Conservation Value (WHCV) SC 2.1. Has the WA Department of Natural Resources updated their website to include the list of Wetlands of High Conservation Value? Yes – Go to SC 2.2 No – Go to SC 2.3 SC 2.2. Is the wetland listed on the WDNR database as a Wetland of High Conservation Value? Yes = Category I No = Not a WHCV SC 2.3. Is the wetland in a Section/Township/Range that contains a Natural Heritage wetland? http://www1.dnr.wa.gov/nhp/refdesk/datasetsearch/wnhpwetlands.pdf Yes – Contact WNHP/WDNR and go to SC 2.4 No = Not a WHCV SC 2.4. Has WDNR identified the wetland within the S/T/R as a Wetland of High Conservation Value and listed it on their website? Yes = Category I No = Not a WHCV	Cat. I
SC 3.0. Bogs Does the wetland (or any part of the unit) meet both the criteria for soils and vegetation in bogs? <i>Use the key below. If you answer YES you will still need to rate the wetland based on its functions.</i> SC 3.1. Does an area within the wetland unit have organic soil horizons, either peats or mucks, that compose 16 in or more of the first 32 in of the soil profile? Yes – Go to SC 3.3 No – Go to SC 3.2 SC 3.2. Does an area within the wetland unit have organic soils, either peats or mucks, that are less than 16 in deep over bedrock, or an impermeable hardpan such as clay or volcanic ash, or that are floating on top of a lake or pond? Yes – Go to SC 3.3 No = Is not a bog SC 3.3. Does an area with peats or mucks have more than 70% cover of mosses at ground level, AND at least a 30% cover of plant species listed in Table 4? Yes = Is a Category I bog No – Go to SC 3.4 NOTE: If you are uncertain about the extent of mosses in the understory, you may substitute that criterion by measuring the pH of the water that seeps into a hole dug at least 16 in deep. If the pH is less than 5.0 and the plant species in Table 4 are present, the wetland is a bog. SC 3.4. Is an area with peats or mucks forested (> 30% cover) with Sitka spruce, subalpine fir, western red cedar, western hemlock, lodgepole pine, quaking aspen, Engelmann spruce, or western white pine, AND any of the species (or combination of species) listed in Table 4 provide more than 30% of the cover under the canopy? Yes = Is a Category I bog No = Is not a bog	Cat. I

Wetland name or number B

SC 4.0. Forested Wetlands Does the wetland have at least <u>1 contiguous acre</u> of forest that meets one of these criteria for the WA Department of Fish and Wildlife's forests as priority habitats? <i>If you answer YES you will still need to rate the wetland based on its functions.</i> — Old-growth forests (west of Cascade crest): Stands of at least two tree species, forming a multi-layered canopy with occasional small openings; with at least 8 trees/ac (20 trees/ha) that are at least 200 years of age OR have a diameter at breast height (dbh) of 32 in (81 cm) or more. — Mature forests (west of the Cascade Crest): Stands where the largest trees are 80- 200 years old OR the species that make up the canopy have an average diameter (dbh) exceeding 21 in (53 cm). Yes = Category I No = <u>Not a forested wetland for this section</u>	Cat. I
SC 5.0. Wetlands in Coastal Lagoons Does the wetland meet all of the following criteria of a wetland in a coastal lagoon? — The wetland lies in a depression adjacent to marine waters that is wholly or partially separated from marine waters by sandbanks, gravel banks, shingle, or, less frequently, rocks — The lagoon in which the wetland is located contains ponded water that is saline or brackish (> 0.5 ppt) during most of the year in at least a portion of the lagoon (<i>needs to be measured near the bottom</i>) Yes – Go to SC 5.1 No = <u>Not a wetland in a coastal lagoon</u>	Cat. I
SC 5.1. Does the wetland meet all of the following three conditions? — The wetland is relatively undisturbed (has no diking, ditching, filling, cultivation, grazing), and has less than 20% cover of aggressive, opportunistic plant species (see list of species on p. 100). — At least ¾ of the landward edge of the wetland has a 100 ft buffer of shrub, forest, or un-grazed or unmowed grassland. — The wetland is larger than 1/10 ac (4350 ft ²) Yes = Category I No = Category II	Cat. II
SC 6.0. Interdunal Wetlands Is the wetland west of the 1889 line (also called the Western Boundary of Upland Ownership or WBUO)? <i>If you answer yes you will still need to rate the wetland based on its habitat functions.</i> In practical terms that means the following geographic areas: — Long Beach Peninsula: Lands west of SR 103 — Grayland-Westport: Lands west of SR 105 — Ocean Shores-Copalis: Lands west of SR 115 and SR 109 Yes – Go to SC 6.1 No = <u>not an interdunal wetland for rating</u> SC 6.1. Is the wetland 1 ac or larger and scores an 8 or 9 for the habitat functions on the form (rates H,H,H or H,H,M for the three aspects of function)? Yes = Category I No – Go to SC 6.2 SC 6.2. Is the wetland 1 ac or larger, or is it in a mosaic of wetlands that is 1 ac or larger? Yes = Category II No – Go to SC 6.3 SC 6.3. Is the unit between 0.1 and 1 ac, or is it in a mosaic of wetlands that is between 0.1 and 1 ac? Yes = Category III No = Category IV	Cat I Cat. II Cat. III Cat. IV
Category of wetland based on Special Characteristics If you answered No for all types, enter "Not Applicable" on Summary Form	N/A



Wetland B Rating Figure 1



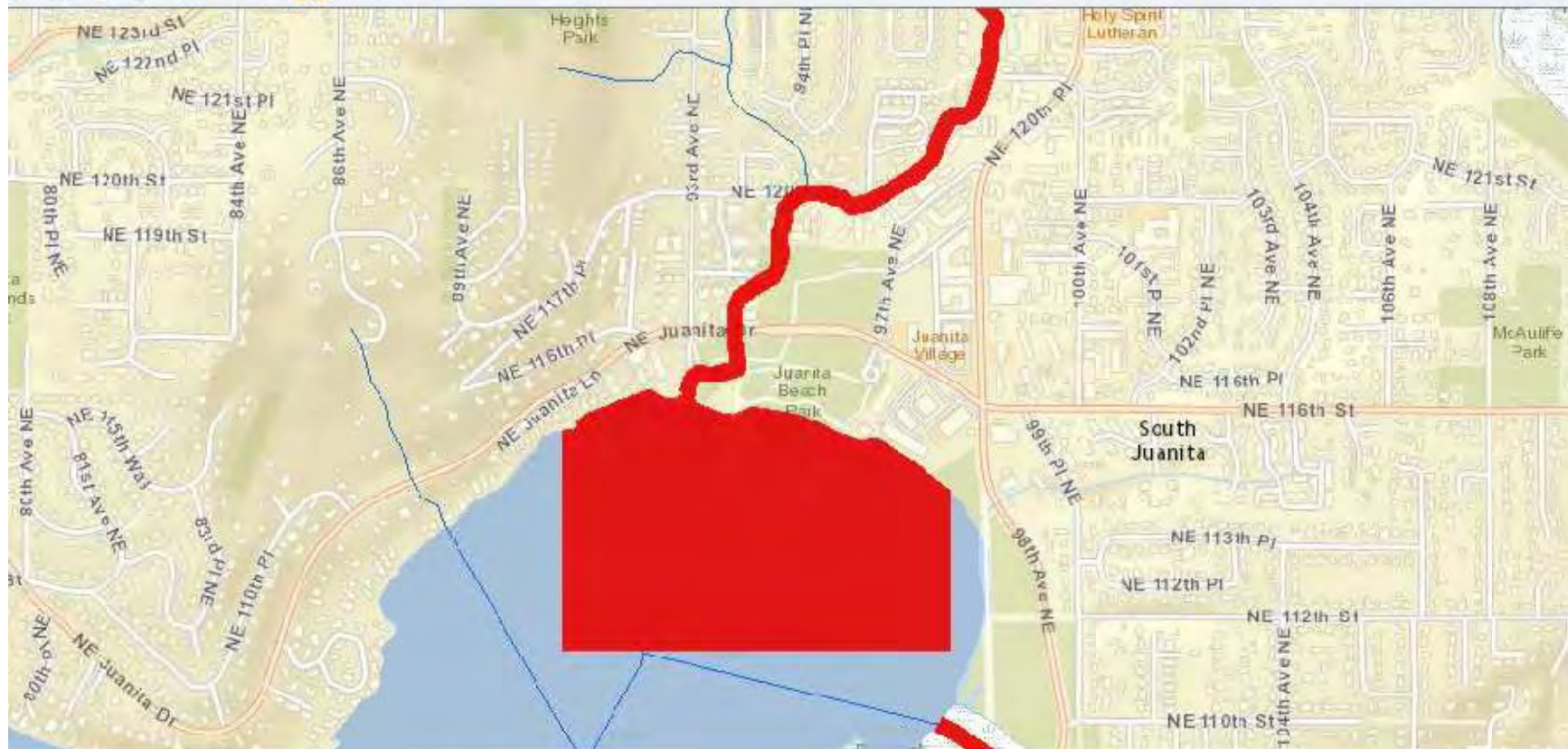
Note: Pollutant generating
areas not present in 150 foot
buffer upland area

Wetland B Rating Figure 2. 150 foot buffer

Wetland B Rating Figure 3. 1 Kilometer Buffer

Water Quality Assessment for Washington

2012 Search



for Washington Data Disclaimer Privacy Notice Contact Us
 from State Government of Indiana All Rights Reserved

Wetland B - Rating Figure 4. Ecology 303(d) Screen Capture

Water Quality Improvement Projects (TMDLs)

[Water Quality Improvement](#) > [Water Quality Improvement Projects by WRIA](#) > [WRIA 8: Cedar-Sammamish](#)

WRIA 8: Cedar-Sammamish

The following table lists overview information for water quality improvement projects (including total maximum daily loads, or TMDLs) for this water resource inventory area ([WRIA](#)). Please use links (where available) for more information on a project.



Counties

- [King](#)
- [Snohomish](#)

Waterbody Name	Pollutants	Status**	TMDL Lead
Ballinger Lake	Total Phosphorus	Approved by EPA	Tricia Shoblom 425-649-7288
Bear-Evans Creek Basin	Fecal Coliform	Approved by EPA	Joan Nolan 425-649-4425
	Dissolved Oxygen Temperature	Approved by EPA	
Cottage Lake	Total Phosphorus	Approved by EPA Has an implementation plan	Tricia Shoblom 425-649-7288
Issaquah Creek Basin	Fecal Coliform	Approved by EPA	Joan Nolan 425-649-4425
Little Bear Creek Tributaries: Trout Stream Great Dane Creek Cutthroat Creek	Fecal Coliform	Approved by EPA	Ralph Svrcek 425-649-7036
North Creek	Fecal Coliform	Approved by EPA Has an implementation plan	Ralph Svrcek 425-649-7036
Pipers Creek	Fecal Coliform	Approved by EPA	Joan Nolan 425-649-4425
Sammamish River	Dissolved Oxygen Temperature	Field work starts summer 2015	Ralph Svrcek 425-649-7036
Swamp Creek	Fecal Coliform	Approved by EPA Has an implementation plan	Ralph Svrcek 425-649-7036

** **Status** will be listed as one of the following: Approved by EPA, Under Development or Implementation

For more information about WRIA 8:

- [Waterbodies in WRIA 8](#) - using the Water Quality Assessment Query Tool
- [Watershed Information for WRIA 8](#)

* The Department of Ecology and other state resource agencies frequently use a system of 62 "Water Inventory Areas" or "WRIAs" to refer to the state's major watershed basins.

ATTACHMENT 6
SHR19-00096

Wetland name or number C**Maps and figures required to answer questions correctly for
Western Washington**Depressional Wetlands

Map of:	To answer questions:	Figure #
Cowardin plant classes	D 1.3, H 1.1, H 1.4	1
Hydroperiods	D 1.4, H 1.2	2
Location of outlet (<i>can be added to map of hydroperiods</i>)	D 1.1, D 4.1	2
Boundary of area within 150 ft of the wetland (<i>can be added to another figure</i>)	D 2.2, D 5.2	3
Map of the contributing basin	D 4.3, D 5.3	4
1 km Polygon: Area that extends 1 km from entire wetland edge - including polygons for accessible habitat and undisturbed habitat	H 2.1, H 2.2, H 2.3	5
Screen capture of map of 303(d) listed waters in basin (from Ecology website)	D 3.1, D 3.2	6
Screen capture of list of TMDLs for WRIA in which unit is found (from web)	D 3.3	7

Riverine Wetlands

Map of:	To answer questions:	Figure #
Cowardin plant classes	H 1.1, H 1.4	
Hydroperiods	H 1.2	
Ponded depressions	R 1.1	
Boundary of area within 150 ft of the wetland (<i>can be added to another figure</i>)	R 2.4	
Plant cover of trees, shrubs, and herbaceous plants	R 1.2, R 4.2	
Width of unit vs. width of stream (<i>can be added to another figure</i>)	R 4.1	
Map of the contributing basin	R 2.2, R 2.3, R 5.2	
1 km Polygon: Area that extends 1 km from entire wetland edge - including polygons for accessible habitat and undisturbed habitat	H 2.1, H 2.2, H 2.3	
Screen capture of map of 303(d) listed waters in basin (from Ecology website)	R 3.1	
Screen capture of list of TMDLs for WRIA in which unit is found (from web)	R 3.2, R 3.3	

Lake Fringe Wetlands

Map of:	To answer questions:	Figure #
Cowardin plant classes	L 1.1, L 4.1, H 1.1, H 1.4	
Plant cover of trees, shrubs, and herbaceous plants	L 1.2	
Boundary of area within 150 ft of the wetland (<i>can be added to another figure</i>)	L 2.2	
1 km Polygon: Area that extends 1 km from entire wetland edge - including polygons for accessible habitat and undisturbed habitat	H 2.1, H 2.2, H 2.3	
Screen capture of map of 303(d) listed waters in basin (from Ecology website)	L 3.1, L 3.2	
Screen capture of list of TMDLs for WRIA in which unit is found (from web)	L 3.3	

Slope Wetlands

Map of:	To answer questions:	Figure #
Cowardin plant classes	H 1.1, H 1.4	
Hydroperiods	H 1.2	
Plant cover of dense trees, shrubs, and herbaceous plants	S 1.3	
Plant cover of dense, rigid trees, shrubs, and herbaceous plants (<i>can be added to figure above</i>)	S 4.1	
Boundary of 150 ft buffer (<i>can be added to another figure</i>)	S 2.1, S 5.1	
1 km Polygon: Area that extends 1 km from entire wetland edge - including polygons for accessible habitat and undisturbed habitat	H 2.1, H 2.2, H 2.3	
Screen capture of map of 303(d) listed waters in basin (from Ecology website)	S 3.1, S 3.2	
Screen capture of list of TMDLs for WRIA in which unit is found (from web)	S 3.3	

Wetland name or number C

HGM Classification of Wetlands in Western Washington

For questions 1-7, the criteria described must apply to the entire unit being rated.

If the hydrologic criteria listed in each question do not apply to the entire unit being rated, you probably have a unit with multiple HGM classes. In this case, identify which hydrologic criteria in questions 1-7 apply, and go to Question 8.

1. Are the water levels in the entire unit usually controlled by tides except during floods?

☒ NO - go to 2

YES - the wetland class is **Tidal Fringe** - go to 1.1

- 1.1 Is the salinity of the water during periods of annual low flow below 0.5 ppt (parts per thousand)?

NO - **Saltwater Tidal Fringe (Estuarine)**

YES - **Freshwater Tidal Fringe**

*If your wetland can be classified as a Freshwater Tidal Fringe use the forms for **Riverine** wetlands. If it is Saltwater Tidal Fringe it is an **Estuarine** wetland and is not scored. This method cannot be used to score functions for estuarine wetlands.*

2. The entire wetland unit is flat and precipitation is the only source (>90%) of water to it. Groundwater and surface water runoff are NOT sources of water to the unit.

☒ NO - go to 3

YES - The wetland class is **Flats**

*If your wetland can be classified as a Flats wetland, use the form for **Depressional** wetlands.*

3. Does the entire wetland unit **meet all** of the following criteria?

- ☐ The vegetated part of the wetland is on the shores of a body of permanent open water (without any plants on the surface at any time of the year) at least 20 ac (8 ha) in size;
☐ At least 30% of the open water area is deeper than 6.6 ft (2 m).

☒ NO - go to 4

YES - The wetland class is **Lake Fringe** (Lacustrine Fringe)

4. Does the entire wetland unit **meet all** of the following criteria?

- ☐ The wetland is on a slope (*slope can be very gradual*),
☐ The water flows through the wetland in one direction (unidirectional) and usually comes from seeps. It may flow subsurface, as sheetflow, or in a swale without distinct banks,
☐ The water leaves the wetland **without being impounded**.

☒ NO - go to 5

YES - The wetland class is **Slope**

NOTE: Surface water does not pond in these type of wetlands except occasionally in very small and shallow depressions or behind hummocks (depressions are usually <3 ft diameter and less than 1 ft deep).

5. Does the entire wetland unit **meet all** of the following criteria?

- ☐ The unit is in a valley, or stream channel, where it gets inundated by overbank flooding from that stream or river,
☐ The overbank flooding occurs at least once every 2 years.

Wetland name or number C**NO** - go to 6**YES** - The wetland class is **Riverine****NOTE:** The Riverine unit can contain depressions that are filled with water when the river is not flooding

6. Is the entire wetland unit in a topographic depression in which water ponds, or is saturated to the surface, at some time during the year? *This means that any outlet, if present, is higher than the interior of the wetland.*

NO - go to 7

YES - The wetland class is **Depressional**

7. Is the entire wetland unit located in a very flat area with no obvious depression and no overbank flooding? The unit does not pond surface water more than a few inches. The unit seems to be maintained by high groundwater in the area. The wetland may be ditched, but has no obvious natural outlet.

NO - go to 8

YES - The wetland class is **Depressional**

8. Your wetland unit seems to be difficult to classify and probably contains several different HGM classes. For example, seeps at the base of a slope may grade into a riverine floodplain, or a small stream within a Depressional wetland has a zone of flooding along its sides. **GO BACK AND IDENTIFY WHICH OF THE HYDROLOGIC REGIMES DESCRIBED IN QUESTIONS 1-7 APPLY TO DIFFERENT AREAS IN THE UNIT** (make a rough sketch to help you decide). Use the following table to identify the appropriate class to use for the rating system if you have several HGM classes present within the wetland unit being scored.

NOTE: Use this table only if the class that is recommended in the second column represents 10% or more of the total area of the wetland unit being rated. If the area of the HGM class listed in column 2 is less than 10% of the unit; classify the wetland using the class that represents more than 90% of the total area.

HGM classes within the wetland unit being rated	HGM class to use in rating
Slope + Riverine	Riverine
Slope + Depressional	Depressional
Slope + Lake Fringe	Lake Fringe
Depressional + Riverine along stream within boundary of depression	Depressional
Depressional + Lake Fringe	Depressional
Riverine + Lake Fringe	Riverine
Salt Water Tidal Fringe and any other class of freshwater wetland	Treat as ESTUARINE

If you are still unable to determine which of the above criteria apply to your wetland, or if you have more than 2 HGM classes within a wetland boundary, classify the wetland as Depressional for the rating.