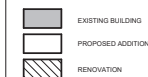


GENERAL SITE NOTES

1. SITE INFORMATION CONTAINED HEREIN, INCLUDING BUT NOT LIMITED TO, DIMENSIONS AND LOCATIONS OF EXISTING UTILITIES, IS BASED ON THE SURVEY BY <SURVEYOR COMPANY>, DATED MONTH DAY, 201X AND IS PROVIDED FOR INFORMATIONAL PURPOSES ONLY. THE ARCHITECT TAKES NO RESPONSIBILITY FOR ITS ACCURACY.
2. CONTRACTOR SHALL VERIFY LOCATION OF ALL EXISTING UTILITIES. CARE SHOULD BE TAKEN TO AVOID DAMAGE TO OR DISTURBANCE OF EXISTING UTILITIES.
3. PROVIDE POSITIVE DRAINAGE AWAY FROM BUILDING.
4. FINISH GRADES AROUND BUILDING SHALL BE 6" MINIMUM BELOW FINISH FLOOR ELEVATION OR BOTTOM OF EXTERIOR CLADDING MATERIALS, UNLESS OTHERWISE NOTED.
5. UNLESS OTHERWISE NOTED, DIMENSIONS ON SITE PLAN ARE TO FACE OF CURBS, EXTERIOR FACE OF BUILDING FOUNDATIONS AND GRID LINES.

LEGEND



mahlum

71 COLUMBIA | FLOOR 4
SEATTLE WA 98104
(206) 441-4151 OFFICE
(206) 441-0478 FAX
1231 NW HOYT | SUITE 102
PORTLAND OR 97209
(503) 224-4932 OFFICE
(503) 224-0918 FAX

MAHLUM ARCHITECTS INC.

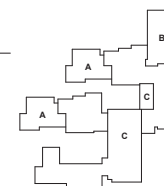


FOR REFERENCE
ONLY

LAKE WASHINGTON SCHOOL
DISTRICT

BENJAMIN FRANKLIN
ELEMENTARY ADDITION -
CLASSROOM ADDITION AND
CORE EXPANSION

1204 NE 60th St, Kirkland, WA 98033,
Kirkland



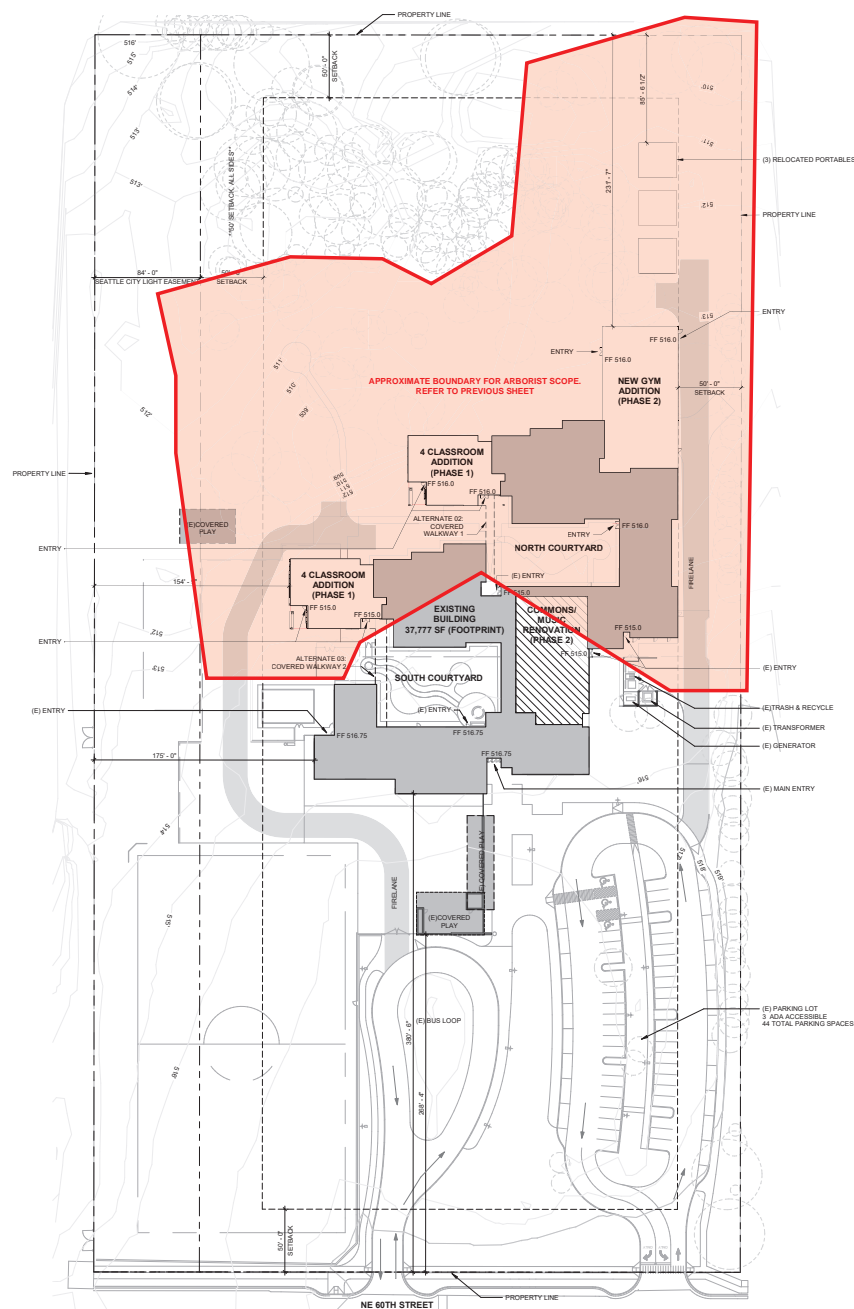
KEY PLAN

MARK	DATE	DESCRIPTION
ISSUE DATE:	04 OCTOBER 2019	
ISSUE:	SCHEMATIC DESIGN	

PROJECT NO. 2019041
DRAWN BY: LAW
CHECKED BY: JS
CONSISTENT WITH ARCHITECT'S SEAL AND SIGNATURE

ARCHITECTURAL SITE PLAN -
OPTION A

A-001-A



1 SITE PLAN - CORE OPT. A
1" = 40'-0"



City of Kirkland | Bridle Trails Neighborhood Plan

