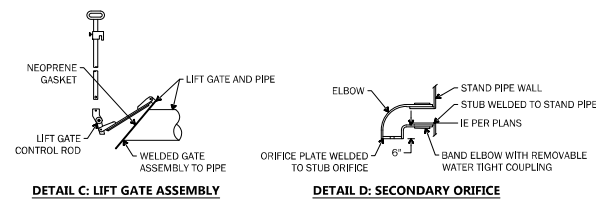


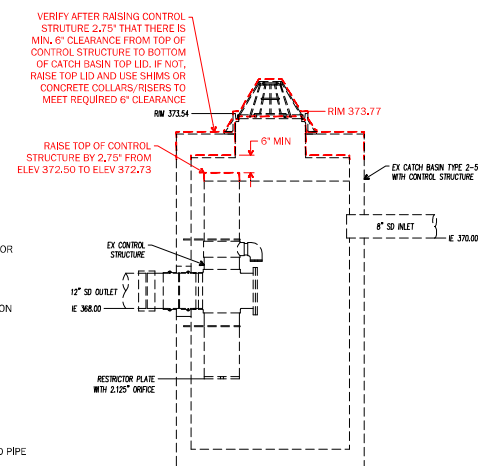
DETAIL B: CONNECTION & CONTROL DEVICE

- NOTES:**
1. PVC PIPE MUST BE SCHEDULE 40, PER ASTM 1785.
 2. *CONSTRUCTION DRAWINGS MUST PROVIDE ELEVATION AND DIAMETER FOR ORIFICE 1 AND ORIFICE 2 AND DIMENSIONS AND ELEVATION FOR THE BOTTOM OF THE V-NOTCH WEIR AND ELEVATION FOR OVERFLOW.
 3. FIELD CHANGES TO DETENTION PIPE INVERT AND SLOPE REQUIRE CONFIRMATION FROM THE ENGINEER OF RECORD THAT THE CONSTRUCTION DRAWING ELEVATIONS FOR THE FLOW CONTROL DEVICE ASSEMBLY STILL MEET THE DESIGN REQUIREMENTS.

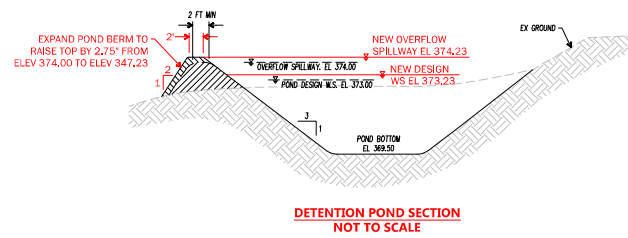


DETAIL C: LIFT GATE ASSEMBLY

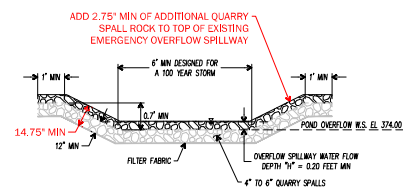
DETAIL D: SECONDARY ORIFICE



DETENTION POND
CONTROL STRUCTURE
NOT TO SCALE



DETENTION POND SECTION
NOT TO SCALE



EMERGENCY OVERFLOW
NOT TO SCALE

Call before you dig
811
Dg. 8-1-1
P 1-800-434-5555
UNDERGROUND
SERVICE (USA)
811

0 10 20 40
SCALE 1"=20'

LEGEND

PROPERTY LINE N 29°23'10" E = 46.8'

STORM DRAINAGE PIPE SD

YD/CY/CB/CB 2/MH

CONTOUR (INDEX)

CONTOUR

SPOT ELEVATION

GRADE BREAK

109.36 TC 109.86
BC 109.36

NOTE:
INFORMATION ON THIS SHEET IS FROM RECORD
DRAWINGS DATED 04/15/15. MARKINGS INDICATED
IN "RED" ARE MODIFICATIONS OR REVISIONS TO
THE EXISTING DEVELOPMENT REQUIRED FOR NEW
BUILDING ADDITION AT FINN HILL MIDDLE SCHOOL.

NOTE:
MODIFICATIONS TO BE MADE TO THE EXISTING ON-SITE STORMWATER DETENTION POND TO PROVIDE APPROXIMATELY 7,510 CUBIC FEET OF ADDITIONAL STORMWATER DETENTION STORAGE CAPACITY THAT IS REQUIRED FOR THE NEW + REPLACED IMPERVIOUS SURFACES FOR THE NEW BUILDING ADDITION.



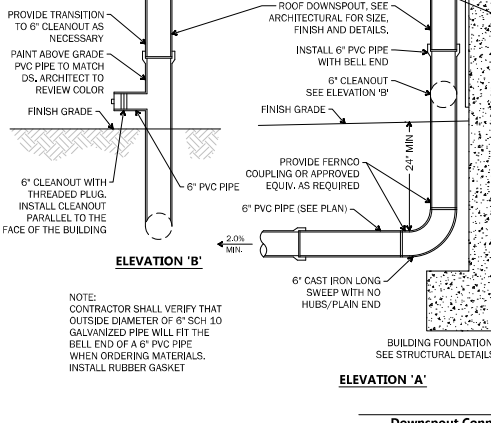
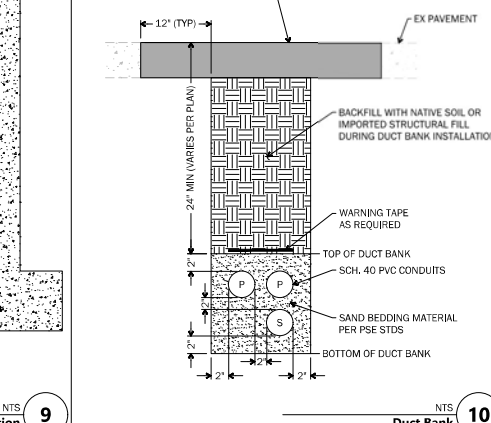
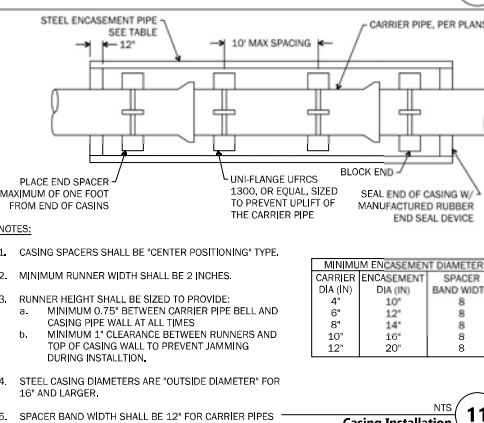
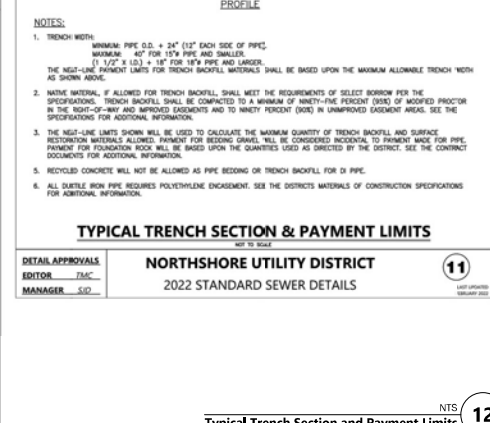
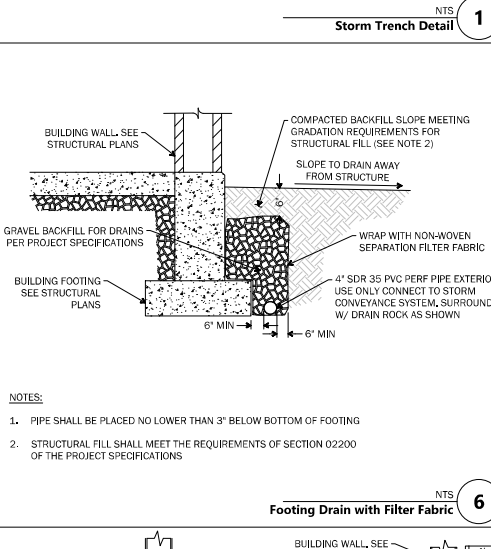
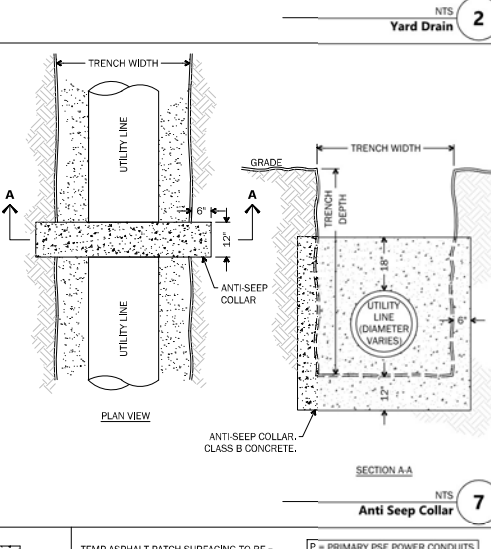
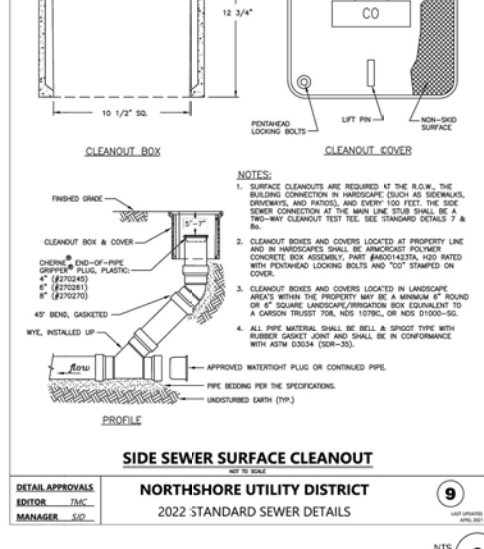
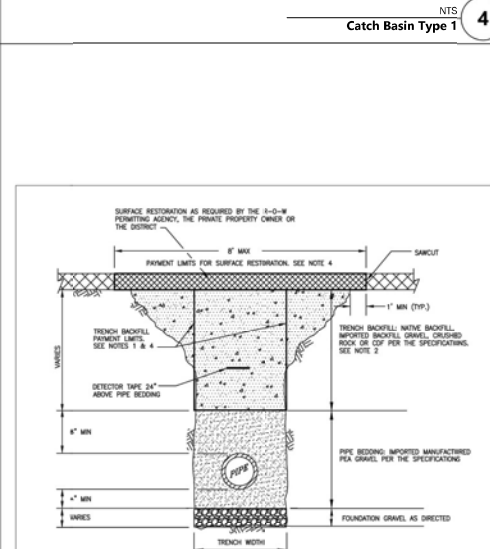
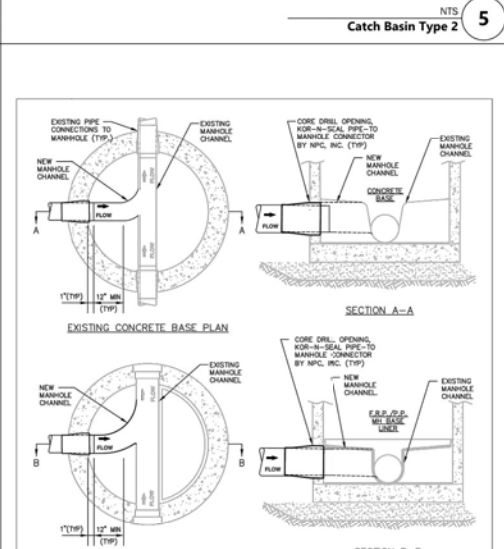
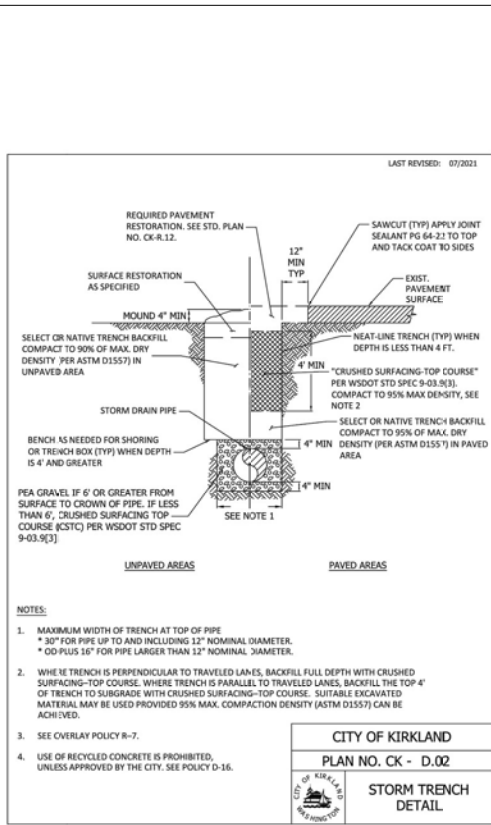
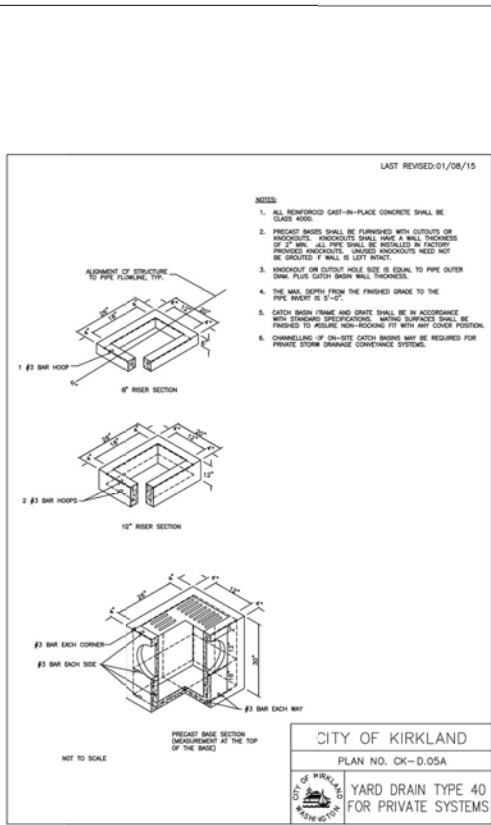
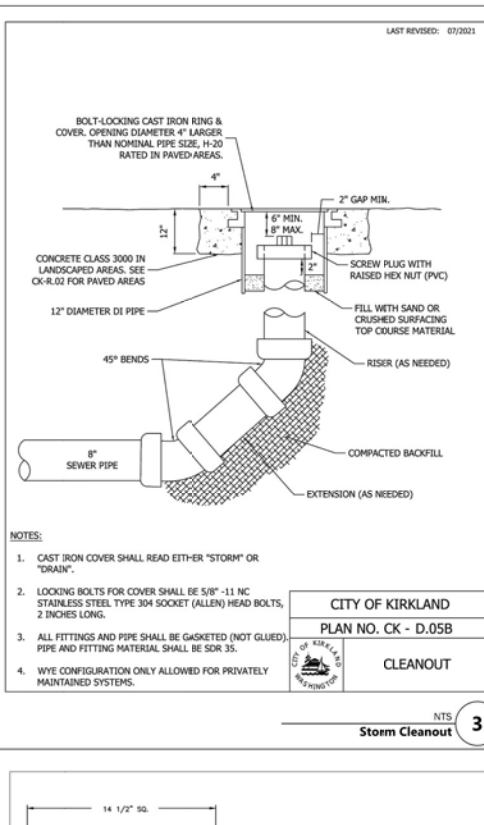
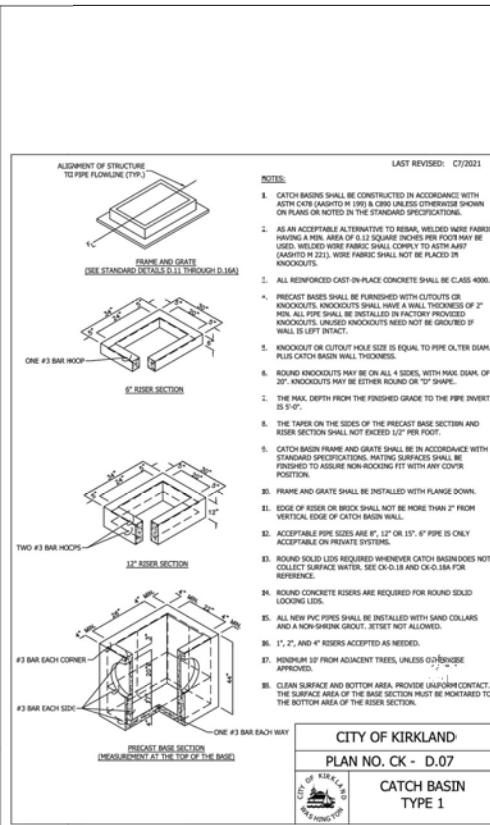
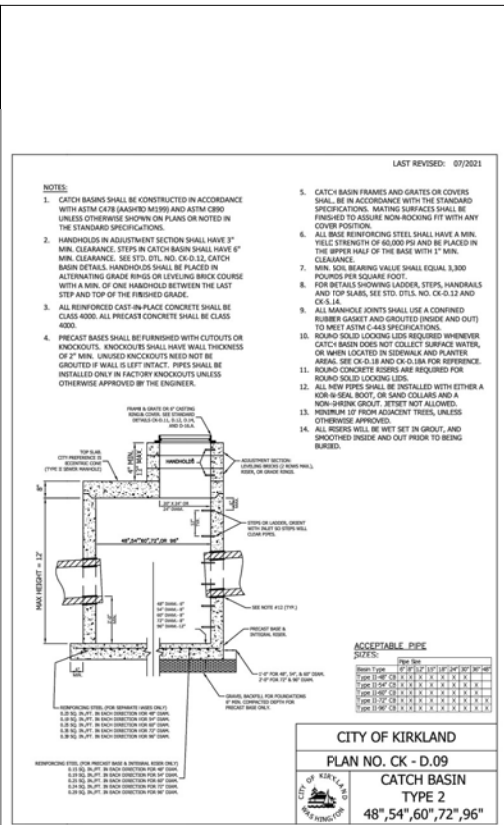
**LAKE WASHINGTON SCHOOL DISTRICT
FINN HILL MS ADDITION**

8040 NE 132nd St.
KIRKLAND, WA 98034

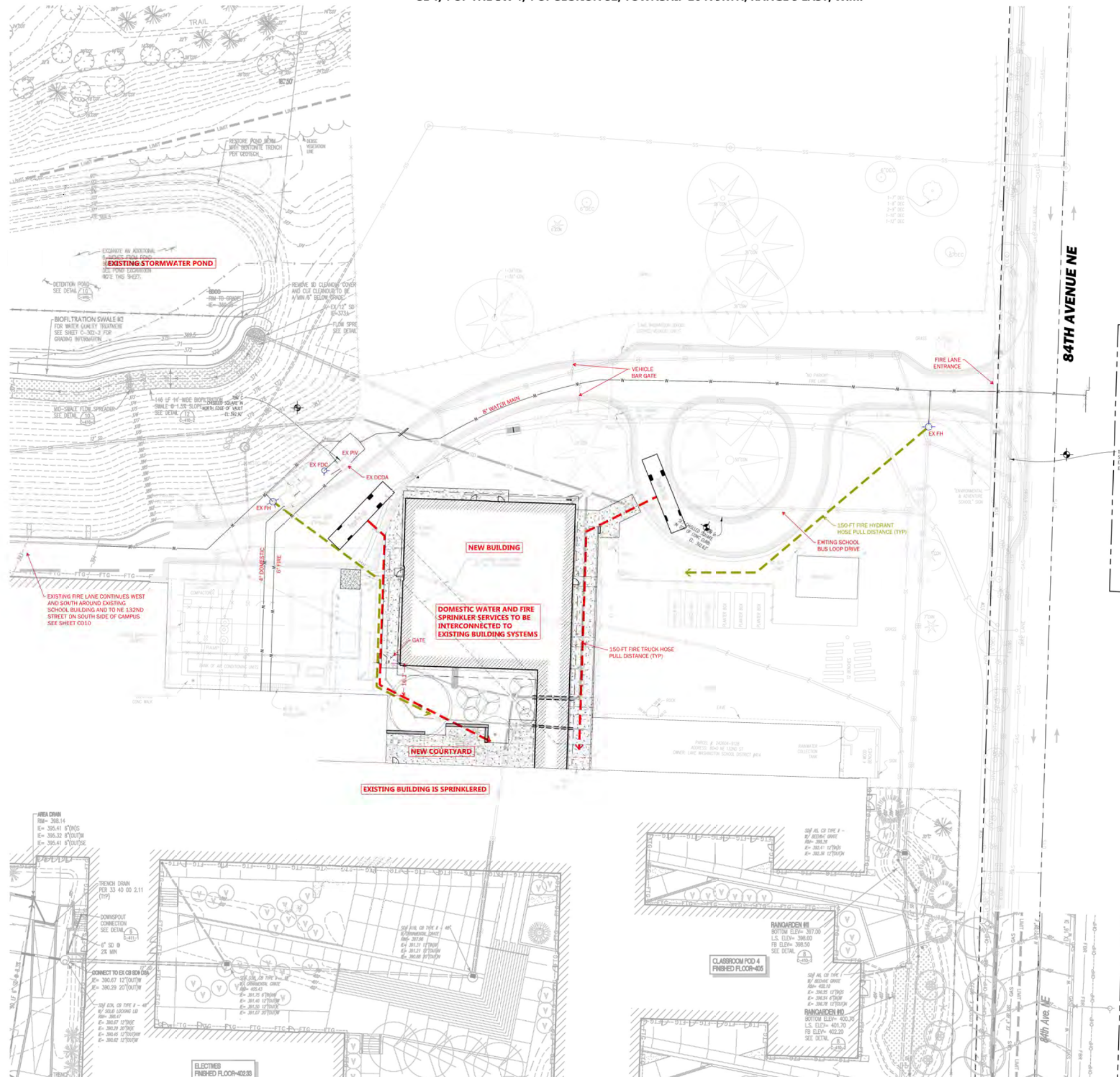
Date:	02/24/23	
Job No.:	22216.00	
Drawn By:	DJD	
Checked by:	SSE	
Revisions		
#	Date	Description

STORM DRAINAGE
& GRADING PLAN -
POND

C402



SE 1/4 OF THE SW 1/4 OF SECTION 32, TOWNSHIP 26 NORTH, RANGE 5 EAST, W.M.



Call before you Dig. 8-1-1
or 1-800-424-5555
UNDERGROUND
SERVICE (USA)

integrus
ARCHITECTURE

117 SOUTH MAIN STREET, SUITE 100, SEATTLE, WA, 98104
TELEPHONE: (206) 281-1137 FAX: (206) 281-1130



JACOBSON
CONSULTING ENGINEERS

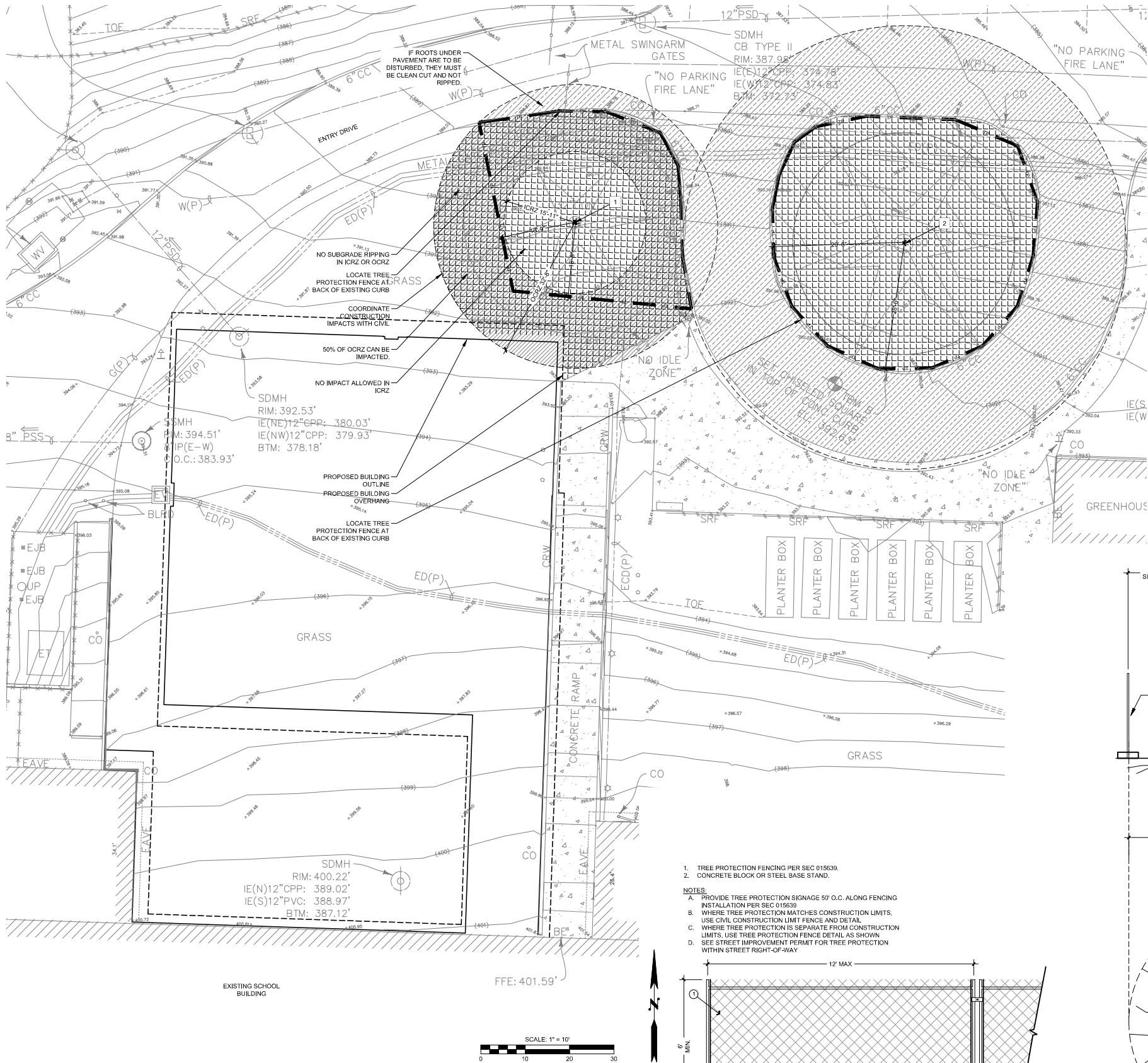
**LAKE WASHINGTON SCHOOL DISTRICT
FINN HILL MS ADDITION**

8040 NE 132nd St.
KIRKLAND, WA 98034

Date:	02/24/23
Job No.:	22216.00
Drawn By:	DJD
Checked by:	SSE
Revisions	
#	Date Description

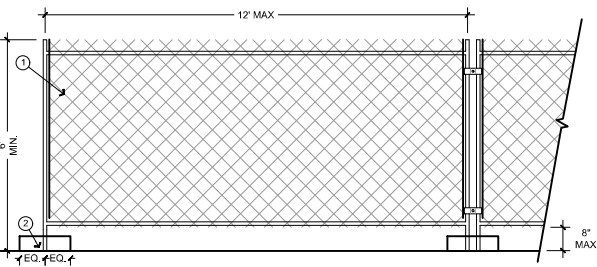
FIRE SITE PLAN

C500

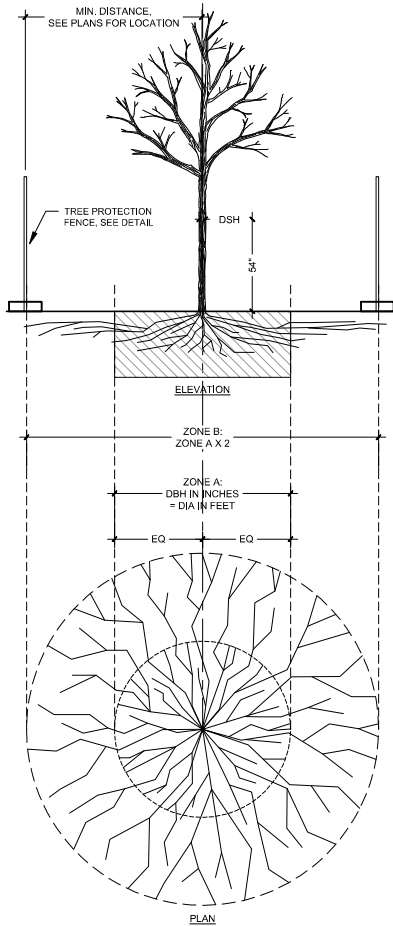


EXISTING TREE LIST					
TREE NUMBER	BOTANICAL NAME	COMMON NAME	DIAMETER AT STANDARD HEIGHT (DSH) (INCHES)	LANDMARK STATUS	VIABILITY STATUS
1	PSEUDOTSUGA MENZIESII	DOUGLAS FIR	40.8000	LANDMARK	VIABLE
2	THUJA PLICATA	WESTERN RED CEDAR	50.4000	LANDMARK	VIABLE

- TREE PROTECTION FENCING PER SEC 015639.
 - CONCRETE BLOCK OR STEEL BASE STAND.
- NOTES:
- PROVIDE TREE PROTECTION SIGNAGE 50' O.C. ALONG FENCING INSTALLATION PER SEC 015639.
 - WHERE TREE PROTECTION MATCHES CONSTRUCTION LIMITS, USE CIVIL CONSTRUCTION LIMIT FENCE AND DETAIL.
 - WHERE TREE PROTECTION IS SEPARATE FROM CONSTRUCTION LIMITS, USE TREE PROTECTION FENCE DETAIL AS SHOWN.
 - SEE STREET IMPROVEMENT PERMIT FOR TREE PROTECTION WITHIN STREET RIGHT-OF-WAY.



1 TREE PROTECTION FENCING
SCALE: 1/2"=1'



- SPECIAL CONSTRUCTION REQUIREMENTS
(TRENCHING/EXCAVATION)
- ZONE A (INTERIOR CRITICAL ROOT ZONE)
- NO DISTURBANCE ALLOWED WITHOUT SITE-SPECIFIC INSPECTION AND APPROVAL OF METHODS TO MINIMIZE ROOT DAMAGE.
 - SEVERANCE OF ROOTS LARGER THAN 2" DIA REQUIRES ARBORIST'S APPROVAL.
 - TUNNELING REQUIRED TO INSTALL LINES 3'-0" BELOW GRADE OR DEEPER.
- ZONE B (OUTER CRITICAL ROOT ZONE)
- OPERATION OF HEAVY EQUIPMENT AND/OR STOCKPILING OF MATERIALS SUBJECT TO ARBORIST'S APPROVAL. SURFACE PROTECTION MEASURES REQUIRED:
 - TEMPORARY ACCESS: MULCH LAYER, 6"-8" DEPTH, & 3/4" PLYWOOD SHEETS.
 - RECURRING ACCESS: MULCH LAYER, 6"-8" DEPTH, & STEEL PLATES.
 - TRENCHING ALLOWED AS FOLLOWS:
 - EXCAVATION BY HAND OR WITH HAND-DRIVEN TRENCHER MAY BE REQUIRED.
 - AIR TRENCHING:
 - LIMIT TRENCH WIDTH, DO NOT DISTURB ZONE A; MAINTAIN 2/3 OR MORE OF ZONE B IN UNDISTURBED CONDITION;
 - OWNER APPROVAL.
 - TUNNELING MAY BE REQUIRED FOR TRENCHES DEEPER THAN 3'-0".
- FENCING/ROOT PROTECTION
- FENCING TO BE PROVIDED AND MAINTAINED AT LIMITS OF OUTER CRITICAL ROOT ZONE-SEE PLANS FOR LOCATION.
 - ARBORIST'S APPROVAL REQUIRED FOR USE/ACCESS WITHIN ZONE B.
 - PERMISSION FOR USE/ACCESS REQUIRES SURFACE PROTECTION FOR ALL UNFENCED, UNPAVED SURFACES WITHIN CRITICAL ROOT ZONE.
- SURFACE PROTECTION MEASURES
- TEMPORARY ACCESS:
 - MULCH LAYER, 6"-8" DEPTH, & 3/4" PLYWOOD SHEETS.
 - RECURRING ACCESS:
 - MULCH LAYER, 6"-8" DEPTH, & STEEL PLATES.

2 TREE PROTECTION
N.T.S.

TREE PROTECTION LEGEND

- PROPERTY LINE
- TREE PROTECTION FENCE
- LIMIT OF WORK LINE
- CONTOURS - EXISTING
- TREE NUMBER
- EXISTING TREE OUTER CRITICAL ROOT ZONE (DRIPLINE)
- EXISTING TREE INNER CRITICAL ROOT ZONE (1/2 DRIPLINE)
- 6" DEPTH ARBORIST CHIPS OR SITE GENERATED WOOD CHIPS FROM TREE REMOVAL OVER CRITICAL ROOT ZONE
- SURFACE PROTECTION MEASURES SEE 2/TP1.00
- CERTIFIED PROJECT ARBORIST SHALL OBSERVE WORK WITHIN DRIPLINE INSIDE AND OUTSIDE OF TREE PROTECTION FENCING. PROJECT ARBORIST SHALL ENSURE THAT ANY IMPACTED ROOTS OVER 2" IN DIAMETER ARE CLEANLY CUT. IF SUBSTANTIAL IMPACTS OCCUR, PROJECT ARBORIST SHALL PREPARE REPORT DOCUMENTING IMPACTS AND RISK TO BE PROVIDED TO OWNER.

TREE PROTECTION NOTES

- NO CONSTRUCTION ACTIVITY IS ALLOWED UNTIL TREE PROTECTION FENCING AND ARBORIST CHIP MULCH HAVE BEEN INSTALLED AND ACCEPTED. SEE SPECIFICATION SECTION 01 56 39.
- SEE SPECIFICATION SECTION 01 56 39. SCOPE EXCLUDES STUMP REMOVAL/GRINDING.
- PROVIDE PROTECTION OF EXISTING TREES TO REMAIN INCLUDING, BUT NOT LIMITED TO, ARBORIST OVERSIGHT, PROTECTION FENCING AS SHOWN ON PLAN, ARBORIST CHIP MULCH AS SHOWN, AND SPECIAL PROTECTION MEASURES WITHIN ROOT ZONES THROUGHOUT PROJECT.
- WHERE TREE PROTECTION FENCING AND CONSTRUCTION FENCING COINCIDE, USE ONLY ONE FENCE, WHICHEVER IS MORE STABLE AND PERMANENT.
- SEE SPECIFICATION SECTION 01 56 39 FOR TREE TRUNK HARVESTING/SALVAGE REQUIREMENTS.
- CLEAR ALL UNDERSTORY VEGETATION WITHIN TREE PROTECTION AREAS PRIOR TO INSTALLATION OF TREE PROTECTION MULCH AND TREE PROTECTION FENCING. REMOVE ALL INVASIVE SHRUBS AND VINES INCLUDING BUT NOT LIMITED TO BLACKBERRY, HOLLY, AND IVY. REMOVAL SHALL BE BY HAND WITHIN ROOT PROTECTION AREAS. REMOVE ALL ROOTS OF INVASIVE PLANTS.

integrus
ARCHITECTURE



OSBORN
CONSULTING
INCORPORATED

1402 3rd Ave
Ste 415
Seattle, WA
98101
206.628.9133
osbornconsulting.com

LAKE WASHINGTON SCHOOL DISTRICT
FINN HILL MS ADDITION

8040 NE 132nd St.
Kirkland, WA 98034

Date:	2/24/23
Job No.:	22216.00
Drawn By:	Author
Checked by:	Checker
Revisions	
#	Date Description

TREE
PROTECTION
PLAN

TP1.00



OSBORN

CONSULTING

INCORPORATED

1402 3rd Ave

Ste 415

Seattle, WA

98101

206.828.9133

osbornconsulting.com

LAKE WASHINGTON SCHOOL DISTRICT

FINN HILL MS ADDITION

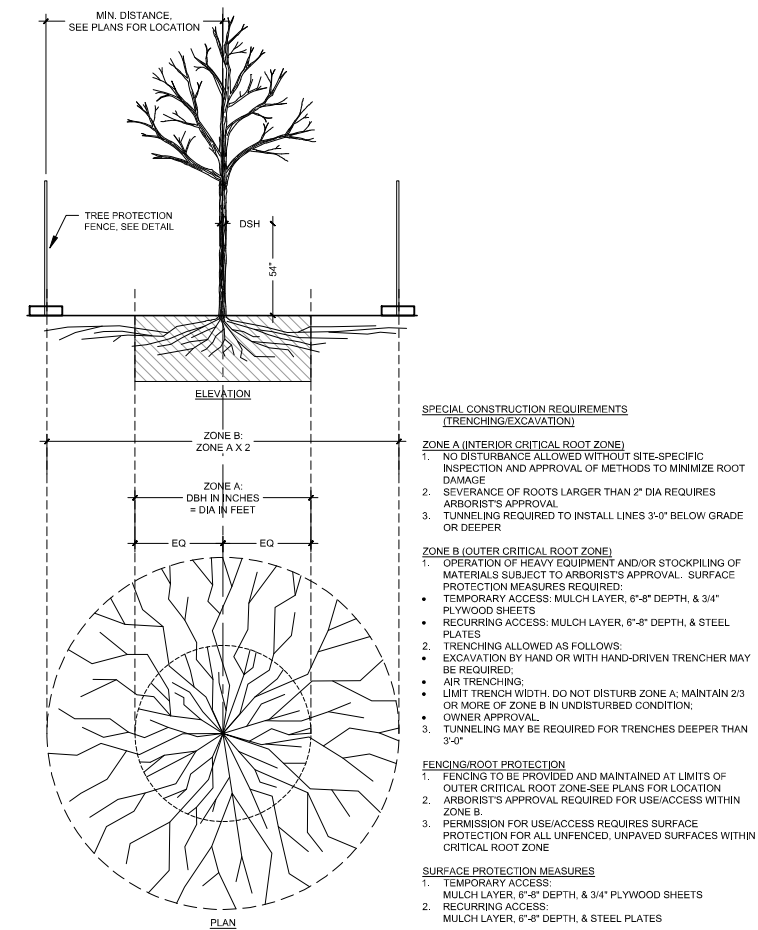
8040 NE 132nd St.

Kirkland, WA 98034

Date:	2/24/23	
Job No.:	22216.00	
Drawn By:	Author	
Checked by:	Checker	
Revisions		
#	Date	Description

TREE
PROTECTION
DETAILS

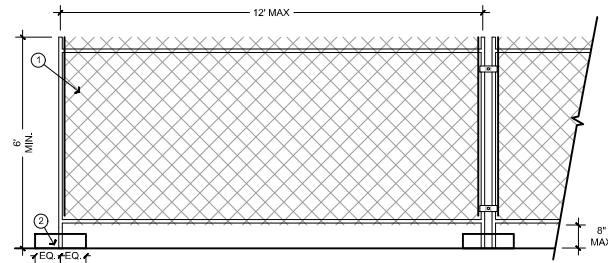
TP1.01



2 TREE PROTECTION

N.T.S.

- TREE PROTECTION FENCING PER SEC 015639.
 - CONCRETE BLOCK OR STEEL BASE STAND.
- NOTES:**
- PROVIDE TREE PROTECTION SIGNAGE 50' O.C. ALONG FENCING INSTALLATION PER SEC 015639
 - WHERE TREE PROTECTION MATCHES CONSTRUCTION LIMITS, USE CIVIL CONSTRUCTION LIMIT FENCE AND DETAIL
 - WHERE TREE PROTECTION IS SEPARATE FROM CONSTRUCTION LIMITS, USE TREE PROTECTION FENCE DETAIL AS SHOWN
 - SEE STREET IMPROVEMENT PERMIT FOR TREE PROTECTION WITHIN STREET RIGHT-OF-WAY



2 TREE PROTECTION FENCING

SCALE: 1/2"=1'