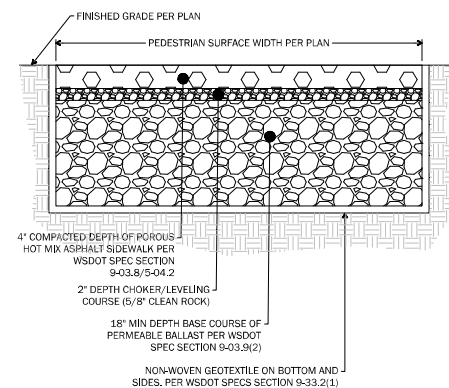


NTS
Not Used **1**

NTS
Not Used

NTS
Not Used



NOTES

1. IMMEDIATELY BEFORE BASE AGGREGATE AND ASPHALT PLACEMENT, REMOVE ANY ACCUMULATION OF FINE MATERIAL FROM EROSION WITH LIGHT EQUIPMENT AND SCARIFY SOIL A MINIMUM DEPTH OF 8 INCHES.
2. DEPTHS SHOWN ARE COMPACTED DEPTH.
3. APPLY SEPARATION GEOTEXTILE 600K OR APPROVED EQUAL ON BOTTOM AND SIDES. EXTEND GEOTEXTILE ABOVE POROUS ASPHALT, AFTER PAVEMENT HAS CURED AND ADJACENT FINISHED GRADE HAS BEEN STABILIZED, CUT SEPARATION GEOTEXTILE AT FINISHED GRADE.

NTS **5**

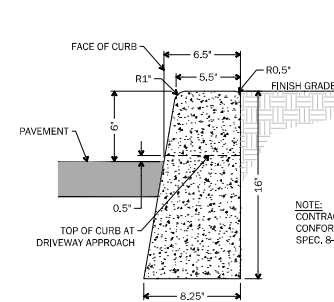
Porous Asphalt Pavement

NTS
Not Used

6

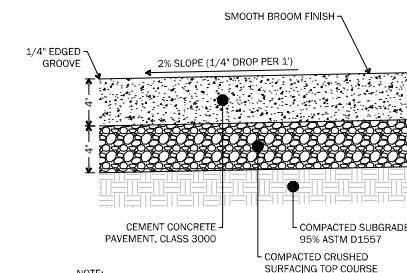
NTS
Not Used

NTS
Asphalt Patch



NOTE:
CONTRA
CONFOR
SPEC. &

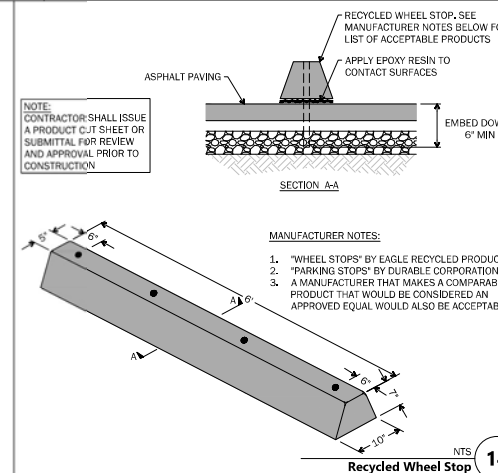
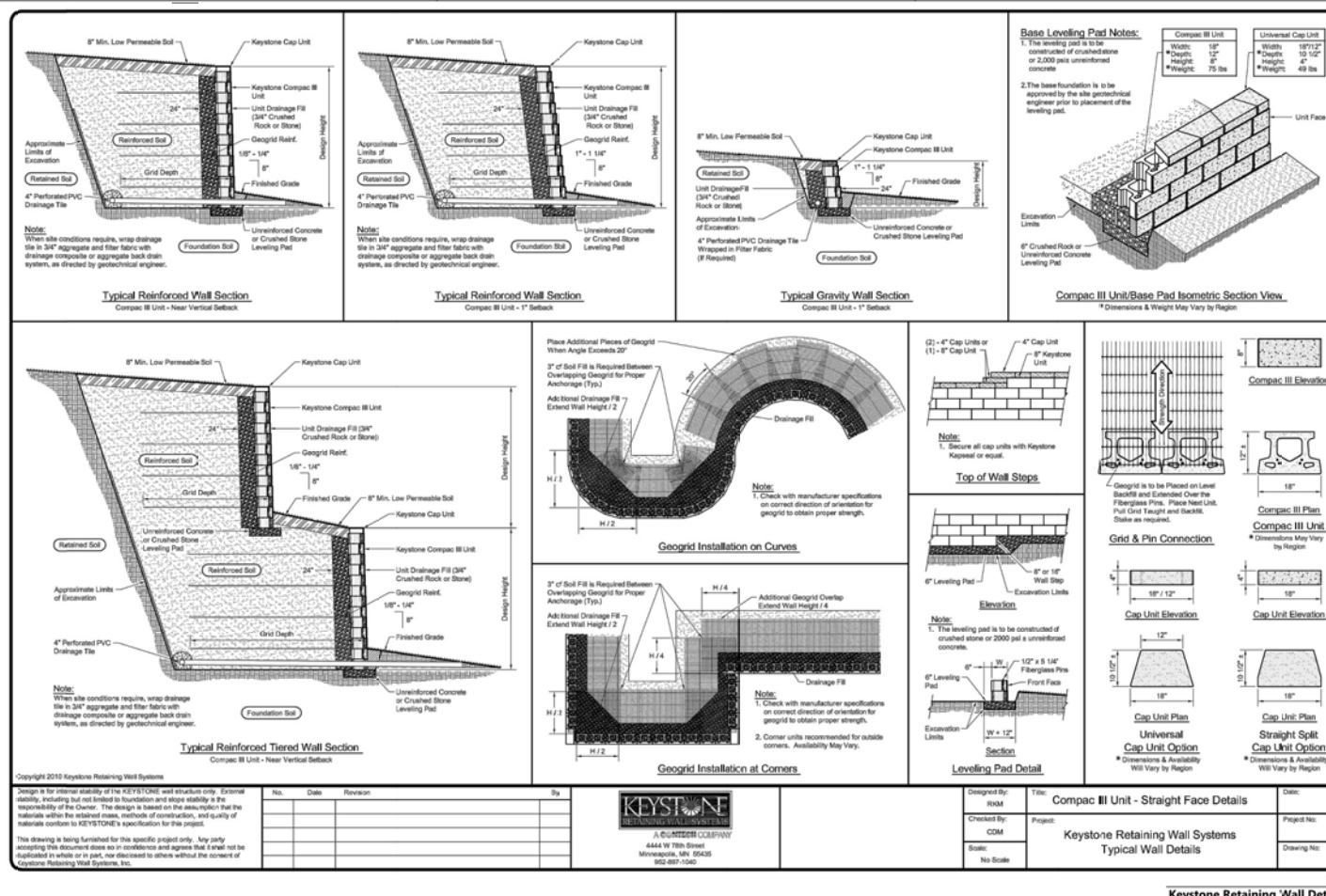
NTS
Vertical Curb



NOTE:

1. CEMENT CONCRETE SHALL BE CLASS 3000
2. DUMMY JOINTS CONSISTING OF 3/16" BY 2" PREMOLDED JOINT MATERIAL SHALL BE PLACED AT 15 FOOT INTERVALS

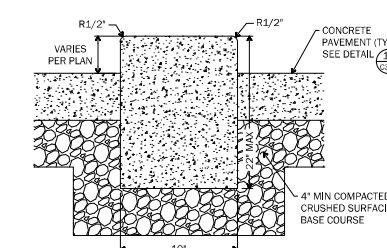
NTS
Concrete Sidewalk **10**



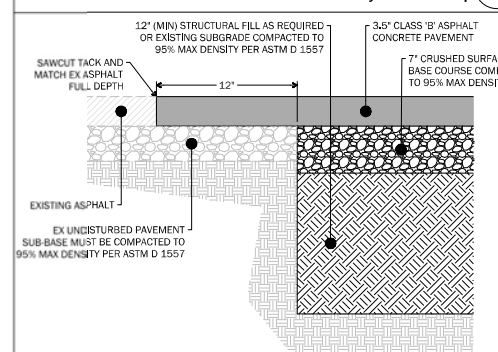
MANUFACTURER NOTES:

1. "WHEEL STOPS" BY EAGLE RECYCLED PRODUCTS
2. "PARKING STOPS" BY DURABLE CORPORATION
3. A MANUFACTURER THAT MAKES A COMPARABLE PRODUCT THAT WOULD BE CONSIDERED AN APPROVED EQUAL WOULD ALSO BE ACCEPTABLE

Recycled Wheel Stop



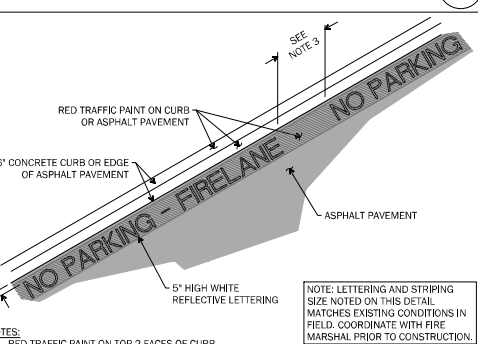
NTS
Curb Wall 15



NOTES

1. ASPHALT PAVEMENT SHALL BE PLACED IN (2) LIFTS. FINAL LIFT SHALL BE CONSTRUCTED WITH THE OVERLAY OF THE EXISTING ASPHALT ONLY AFTER BUILDING IMPROVEMENTS ARE COMPLETE.
2. SEAL JOINT WITH PG 64-22 SEALANT AND PROVIDE A SAND BLANKET TO ALLEVIATE TRAILING.

NTS **1**



NOTES

1. RED TRAFFIC PAINT ON TOP 2 FACES OF CURB
2. 5" WHITE REFLECTIVE LETTERING WITH 3" STROKE STATING "N PARKING FIRELANE" ON FACE OF CURB OR ASPHALT PAVEMENT (IF NO CURB)
3. LETTERING SPACED EVERY 30 FEET ON FACE OF CURB OR 60 FEET IF ON ASPHALT PAVEMENT (IF NO CURB)
4. ROLLED CURBS OR SURFACE WITHOUT CURBS SHALL HAVE A RED 6" WIDE CONTINUOUS STRIPE IN ADDITION TO PAVEMENT WRITING AS INDICATED ON THIS DETAIL

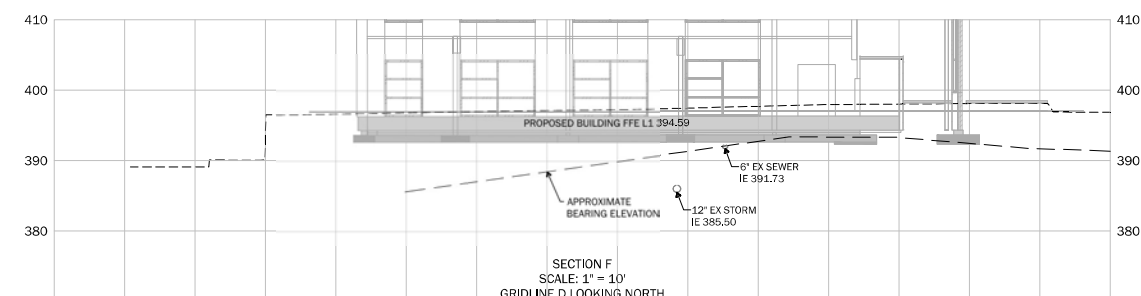
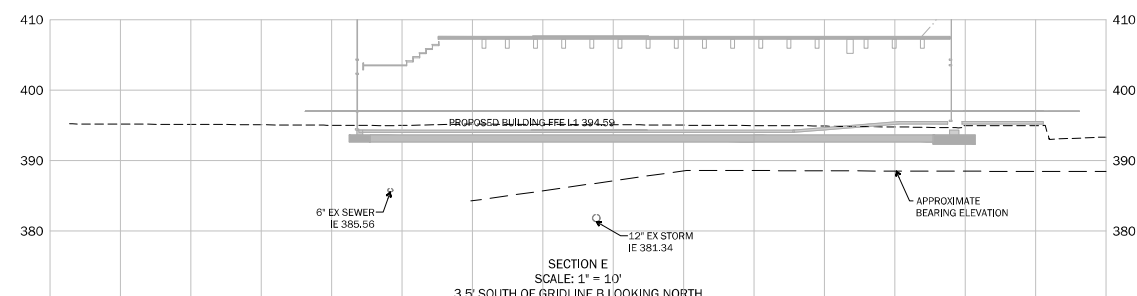
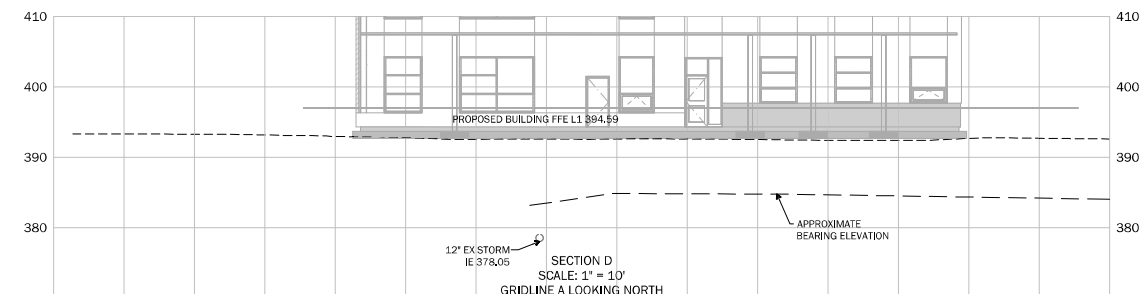
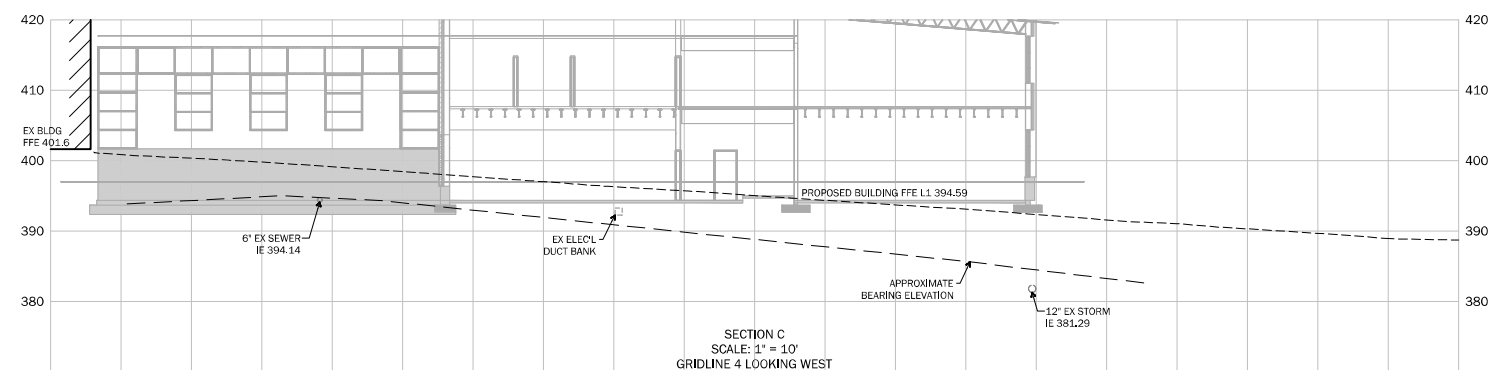
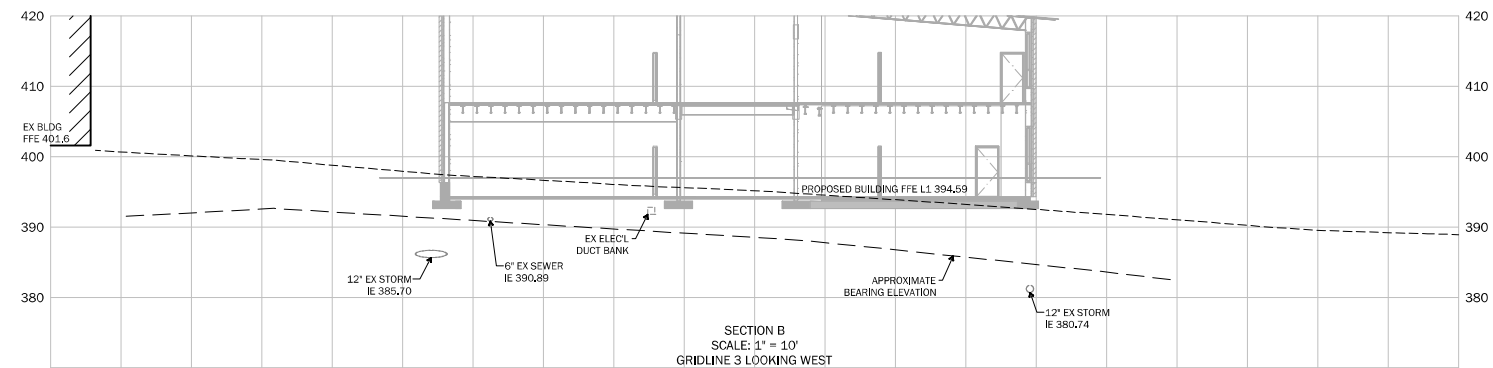
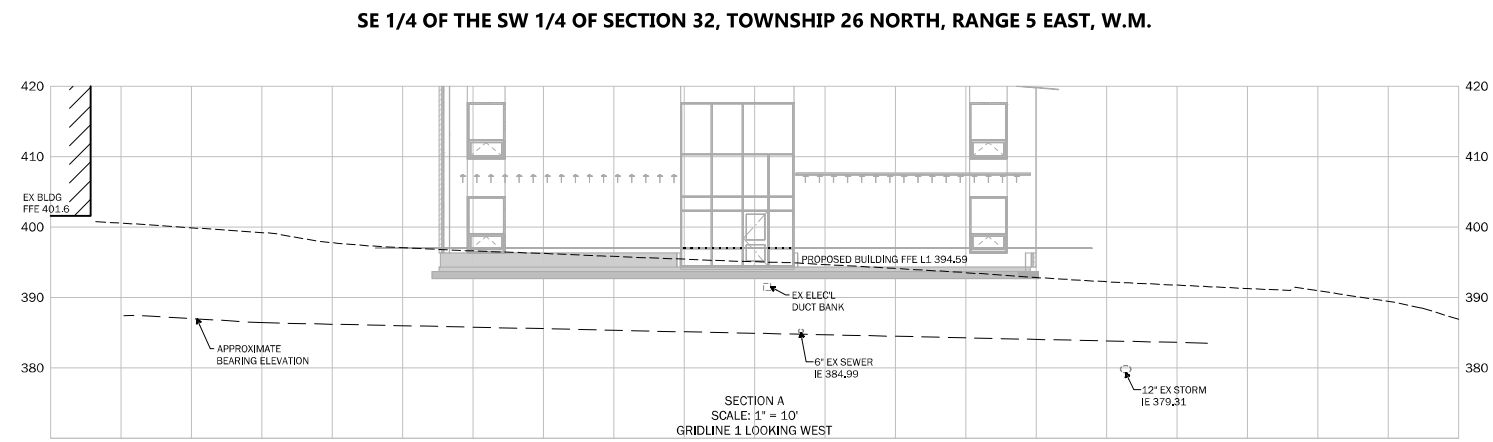
NTS **20**

LAKE WASHINGTON SCHOOL DISTRICT
FINN HILL MS ADDITION
8040 NE 132nd St.
KIRKLAND, WA 98034

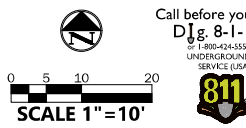
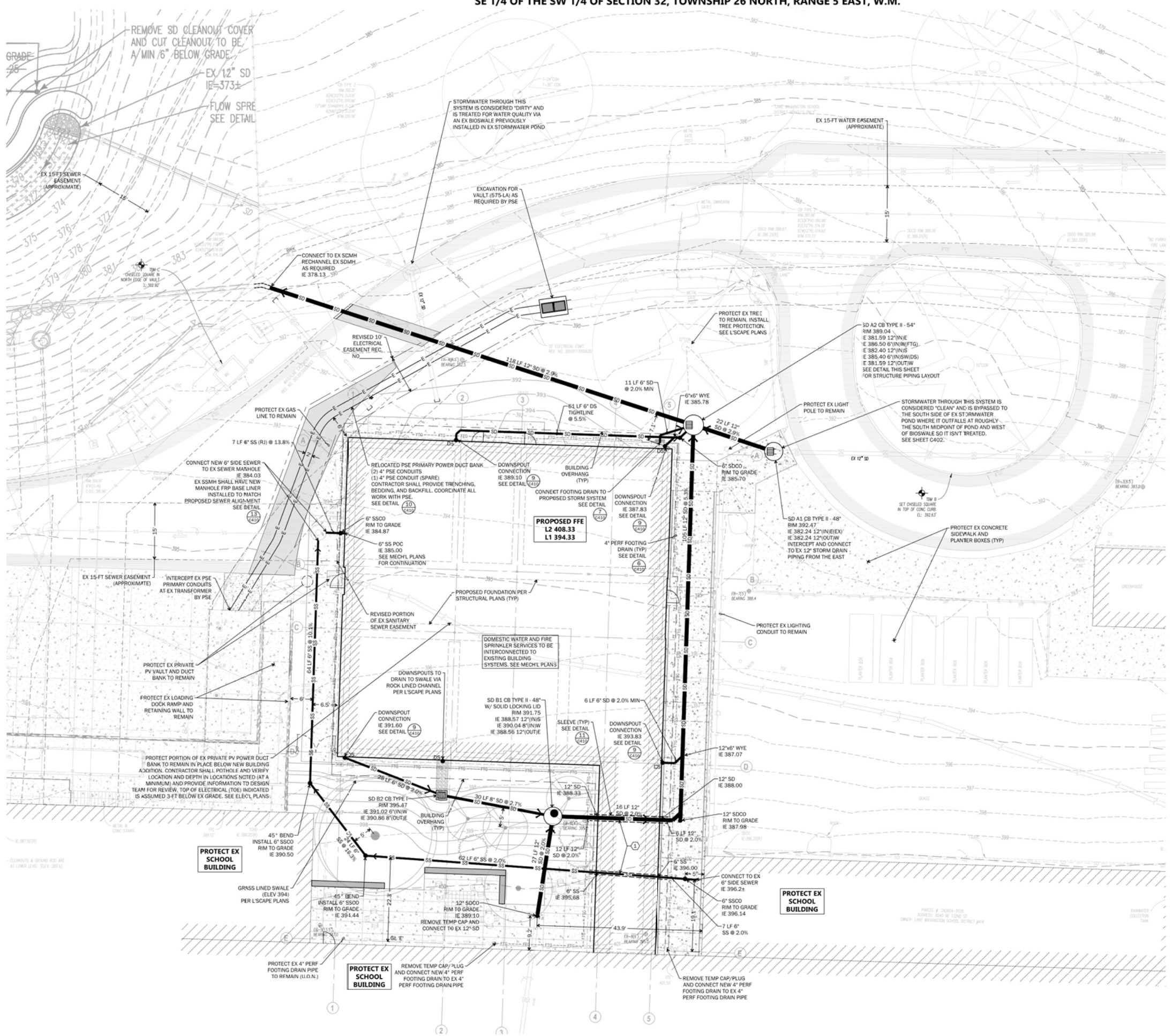
Date:	12/02/22	
Job No.:	22216.00	
Drawn By:	DJD	
Checked by:	SSE	
Revisions		
#	Date	Description

SITE SECTIONS

C320



SE 1/4 OF THE SW 1/4 OF SECTION 32, TOWNSHIP 26 NORTH, RANGE 5 EAST, W.M.



- LEGEND**
- PROPERTY LINE
 - STORM DRAINAGE PIPE
 - YD/CO/CE/CE 2/MH
 - SANITARY SEWER
 - SANITARY MH/CO
 - WATER MAIN
 - FH/FDC/PIV/VALVE
 - WATER VAULT/METER
 - DETENTION VAULT
 - DOWNSPOUT
 - DISPERSAL TRENCH
 - FOOTING DRAIN
 - CONTOUR (INDEX)
 - CONTOUR
 - SPOT ELEVATION
 - GRADE BREAK

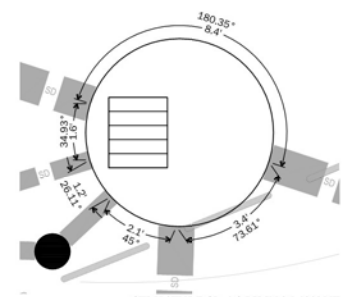
- TYPICAL STORM AND SEWER STRUCTURE DETAILS**
- CB TYPE 1 SEE DETAIL 1/C410
 - CB TYPE II SEE DETAIL 2/C410
 - CLEANOUT (SSCO/SSCO) SEE DETAILS 3/C410, 4/C410

STORM DETENTION NOTE:
EXISTING ON-SITE STORMWATER DETENTION POND TO BE MODIFIED TO PROVIDE APPROXIMATELY 7,510 CF OF ADDITIONAL STORMWATER STORAGE FOR THE NEW BUILDING ADDITION. SEE SHEET C402.

- SEE SHEET C000 FOR CITY OF KIRKLAND STORM DRAINAGE NOTES
- SEE DETAIL 1/C410 FOR TYPICAL STORM TRENCH DETAIL
- SEE DETAIL 12/C410 FOR TYPICAL SEWER TRENCH DETAIL
- LOCATE NEW BUILDING ADDITION PER ARCH'L PLANS

KEYNOTES

- TRANSITION FROM PVC TO SCHED 40 WITHIN BUILDING FOOTPRINT PER MECH'L PLANS. INSTALL SLEEVE AROUND PIPE WHERE IT CROSSES BELOW FOUNDATION PER DETAIL 11/C410 AND ENCASE WITH CDF PER STRUCT'L DETAIL 13/S021



STRUCTURE SD A1 PIPING LAYOUT
SCALE: 1"=2'

NORTHSHORE UTILITY DISTRICT

APPROVED BY: _____

DATE APPROVED: _____

integrus
ARCHITECTURE



JACOBSON
CONSULTING ENGINEERS

LAKE WASHINGTON SCHOOL DISTRICT
FINN HILL MS ADDITION
8040 NE 132nd St.
KIRKLAND, WA 98034

Date:	02/24/23	
Job No.:	22216.00	
Drawn By:	DJD	
Checked by:	SSE	
Revisions		
#	Date	Description

STORM DRAINAGE
& UTILITY PLAN -
BUILDING

C401