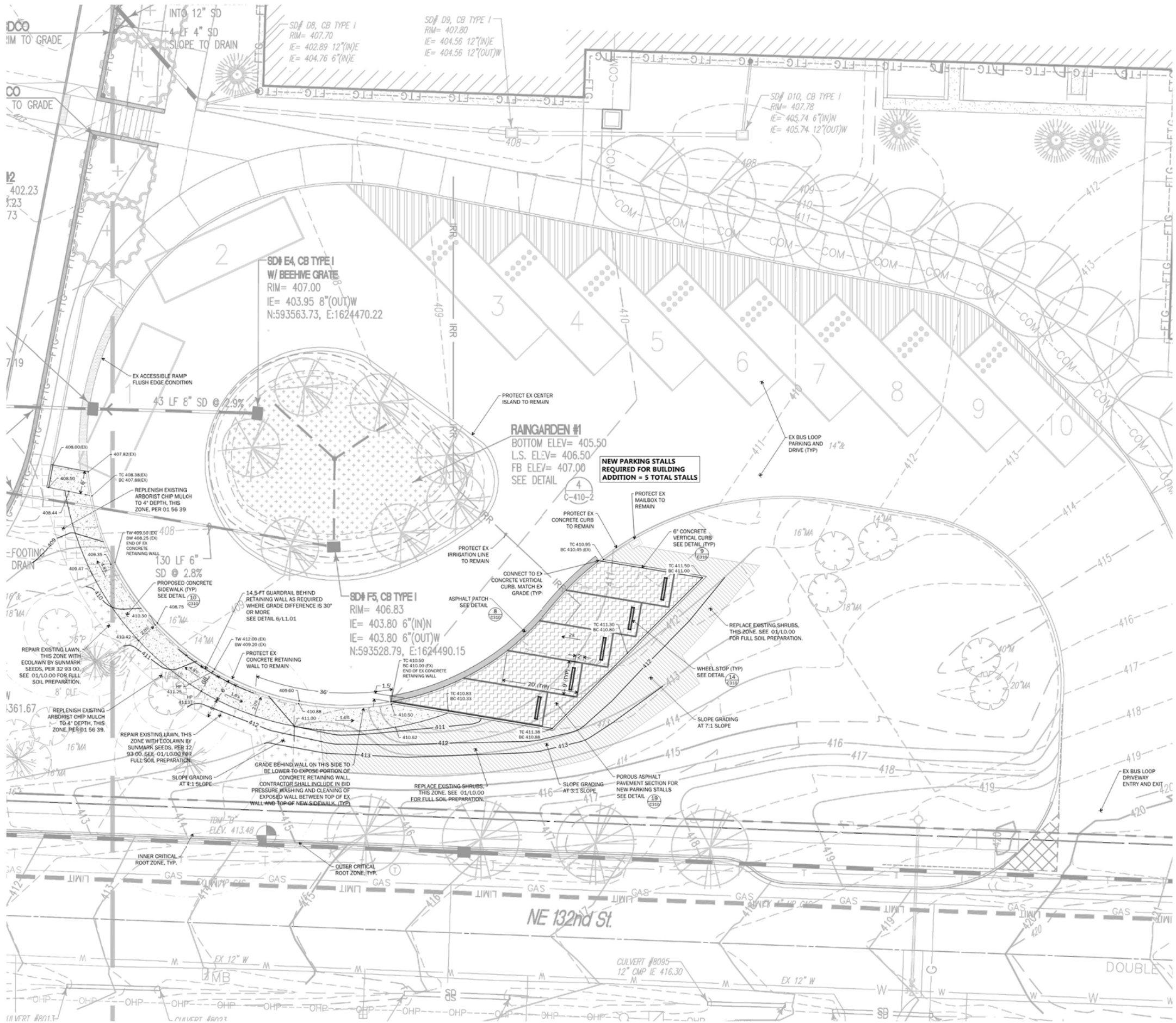


C301

SE 1/4 OF THE SW 1/4 OF SECTION 32, TOWNSHIP 26 NORTH, RANGE 5 EAST, W.M.



Call before you Dig 8-1-1
 1-800-4-A-SHED
 (1-800-426-7355)
 (TOLL FREE) (TOLL FREE)

0 5 10 20
SCALE 1" = 10'

LEGEND

- PROPERTY LINE
- CONTOUR (INDEX)
- CONTOUR
- SPOT ELEVATION
- GRADE BREAK
- ASPHALT PAVEMENT
- POROUS ASPHALT
- CONCRETE PAVEMENT
- ARBORIST CHIP MULCH
- ECOLAWN
- SHRUB REPLACEMENT
- CONCRETE CURB

NOTE: BASEMAP INFORMATION ON THIS SHEET IS FROM RECORD DRAWINGS DATED 04/15/15.

**GB = GRADE BREAK
 HP = HIGH POINT**

NOTE: PERMITTING FOR WORK ASSOCIATED WITH PROPOSED PARKING STALLS UNDER SEPARATE LSM PERMIT

integrus
 ARCHITECTURE

JACOBSON
 CONSULTING ENGINEERS

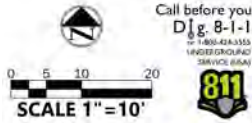
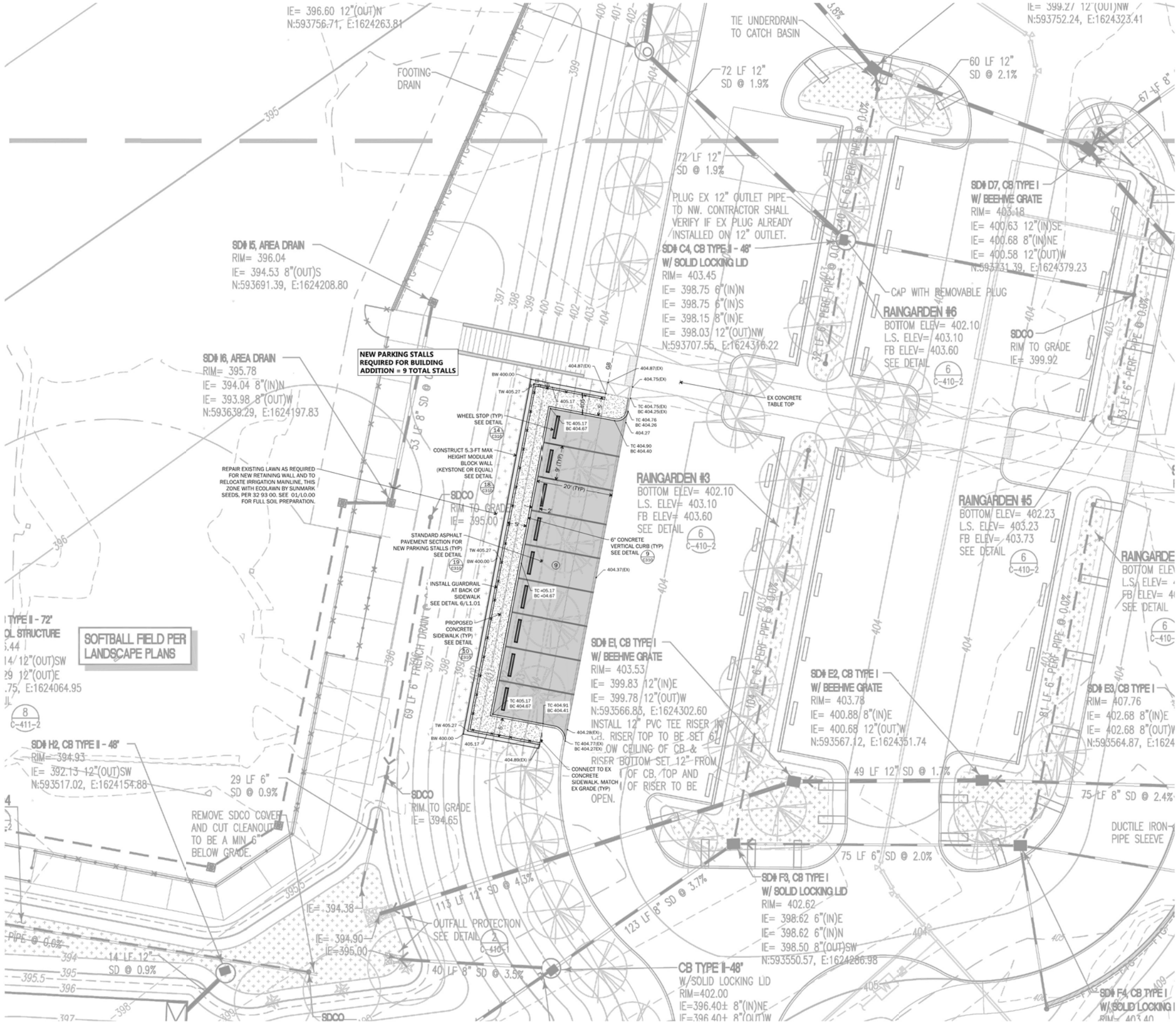
Lake Washington School District No. 414
FINN HILL MIDDLE SCHOOL ADDITION
 8040 NE 132nd St.
 KIRKLAND, WA 98034

Date:	04/07/23	
Job No.:	22216.00	
Drawn By:	DJD	
Checked by:	SSE	
Revisions		
#	Date	Description
A	5/12/23	LSM Permit REV 1
B	5/12/23	BLD Permit REV 1

**GRADING &
 PAVING PLAN -
 PARKING**

C303

SE 1/4 OF THE SW 1/4 OF SECTION 32, TOWNSHIP 26 NORTH, RANGE 5 EAST, W.M.



LEGEND

PROPERTY LINE	1/4" = 10' 1/4" = 10'
CONTOUR (INDEX)	1/4" = 10' 1/4" = 10'
CONTOUR	1/4" = 10' 1/4" = 10'
SPOT ELEVATION	1/4" = 10' 1/4" = 10'
GRADE BREAK	1/4" = 10' 1/4" = 10'
ASPHALT PAVEMENT	1/4" = 10' 1/4" = 10'
PORTUGAL ASPHALT	1/4" = 10' 1/4" = 10'
CONCRETE PAVEMENT	1/4" = 10' 1/4" = 10'
ECOLAWN	1/4" = 10' 1/4" = 10'
CONCRETE CURB	1/4" = 10' 1/4" = 10'

NOTE: BASEMAP INFORMATION ON THIS SHEET IS FROM RECORD DRAWINGS DATED 04/15/15.

CONTRACTOR SHALL FIELD VERIFY EXISTING GRADES AND UTILITIES WITHIN AREA OF WORK OR AS NOTED ON PLAN PRIOR TO STARTING CONSTRUCTION.

NOTE: PERMITTING FOR WORK ASSOCIATED WITH PROPOSED PARKING STALLS UNDER SEPARATE LSM PERMIT.

integrus ARCHITECTURE

JACOBSON CONSULTING ENGINEERS

Lake Washington School District No. 414
FINN HILL MIDDLE SCHOOL ADDITION

8040 NE 132nd St.
KIRKLAND, WA 98034

Revisions

#	Date	Description
A	5/12/23	LSM Permit REV 1
B	5/12/23	BLD Permit REV 1

GRADING & PAVING PLAN - PARKING

C304