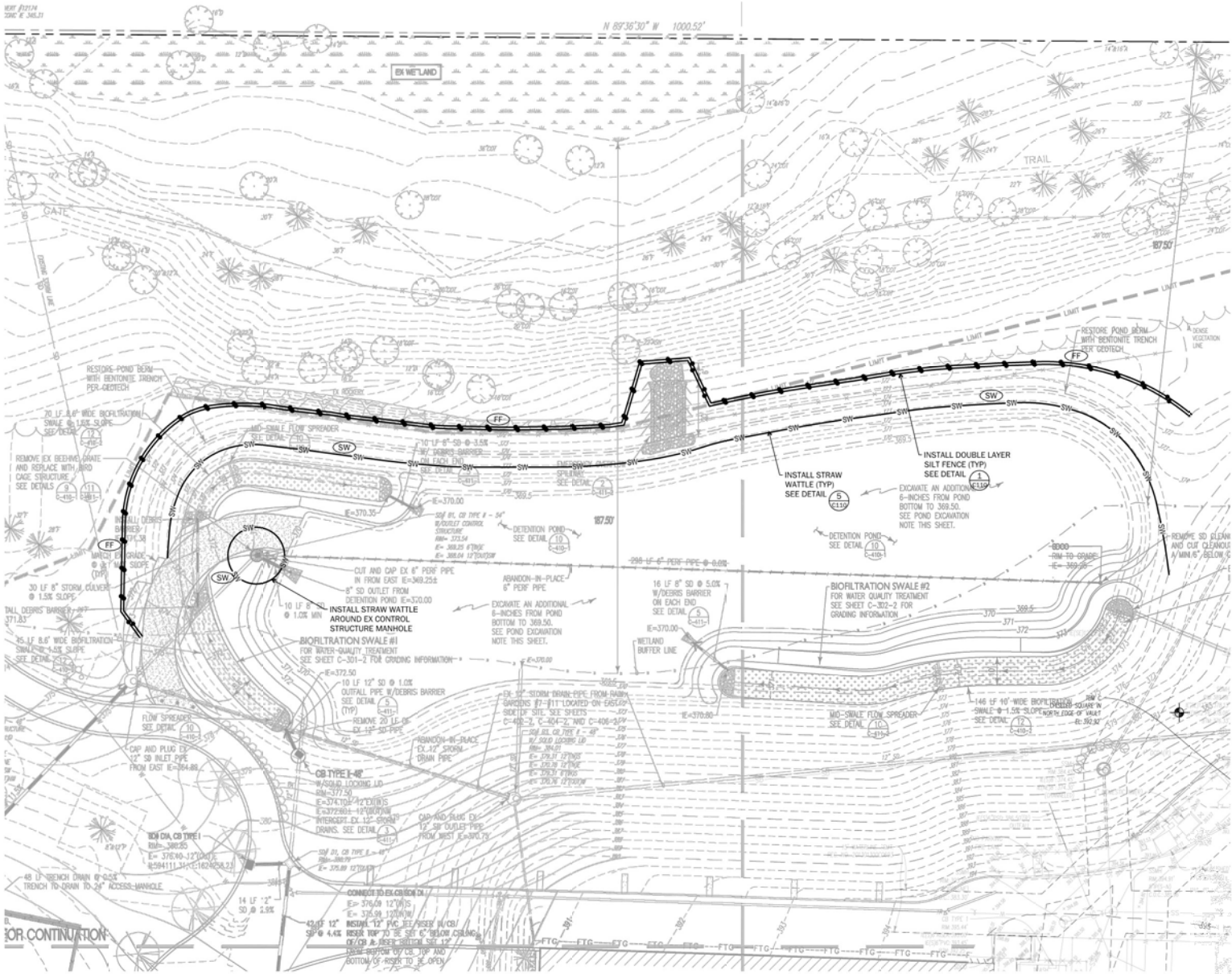


SE 1/4 OF THE SW 1/4 OF SECTION 32, TOWNSHIP 26 NORTH, RANGE 5 EAST, W.M.



NOTES

1. SEE CITY OF KIRKLAND GENERAL EROSION/SEDIMENTATION CONTROL NOTES ON SHEET C000.
2. PROVIDE CATCH BASIN PROTECTION AT ALL CATCH BASINS RECEIVING SURFACE FLOW FROM CONSTRUCTION AREAS. (TYP.)
3. CONTRACTOR IS RESPONSIBLE FOR TREATING ALL CONSTRUCTION STORMWATER RUNOFF TO DISCHARGE AT NO MORE THAN 25 NTU OVER BASELINE. THE SYSTEM SHALL BE DESIGNED, INSTALLED, AND OPERATED BY THE CONTRACTOR. THIS SYSTEM MAY INCLUDE BUT NOT LIMITED TO: SURFACE PONDS, PERMANENT VAULTS, BAKER TANKS, FILTRATION SYSTEMS, PUMPS AND HOSES ETC. THE SYSTEM MUST REMAIN UNTIL THE AREA OF THE SITE IT IS TREATING HAS BEEN STABILIZED, AND IT HAS BEEN APPROVED FOR REMOVAL BY BOTH THE CITY AND THE PROJECT CIVIL ENGINEER.
4. CONTRACTOR SHALL REFER TO CITY OF KIRKLAND PUBLIC WORKS PRE-APPROVED PLANS POLICY E-1: USE OF TEMPORARY SEDIMENT SETTLING TANKS.
5. CONTRACTOR TO PROVIDE ALL WEATHER WORKING THROUGH THE CONSTRUCTION SITE AS NECESSARY. NO PAYMENT WILL BE MADE FOR UNSUITABLE SOILS IN THIS AREA THAT ARE NOT PROTECTED DURING THE DURATION OF CONSTRUCTION ACTIVITIES.
6. SEE SHEET C110, AND THE CITY OF KIRKLAND PRE-APPROVED PLANS, FOR OTHER DETAILS WHICH MAY BE OPTIONS TO UTILIZE IN MANAGING THE EROSION AND SEDIMENT CONTROL ON THE SITE.

Call before you dig 8-1-1
1-800-424-5555
UNDERGROUND SERVICE (USA)

811

SCALE 1"=20'

0 10 20 40

LEGEND

PROPERTY LINE N 72°43'00" E - 46.81'

SAWCUT LINE

REMOVE CURBING

REMOVE ASPHALT PAVEMENT

REMOVE CONCRETE PAVEMENT

DEMOLISH BUILDING

REMOVE TREE(S)

FENCING

FF FILTER FABRIC FENCING

INLET PROTECTION

VEE TREE PROTECTION

SW STRAW WATTLE

LAKE WASHINGTON SCHOOL DISTRICT
FINN HILL MS ADDITION

8040 NE 132nd St.
KIRKLAND, WA 98034

integrus
ARCHITECTURE

117 180TH AVE. STREET SUITE 100, BELLEVUE, WA, 98008
TELEPHONE (206) 242-1137 FAX (206) 242-1139

JACOBSON
CONSULTING ENGINEERS

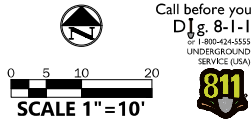
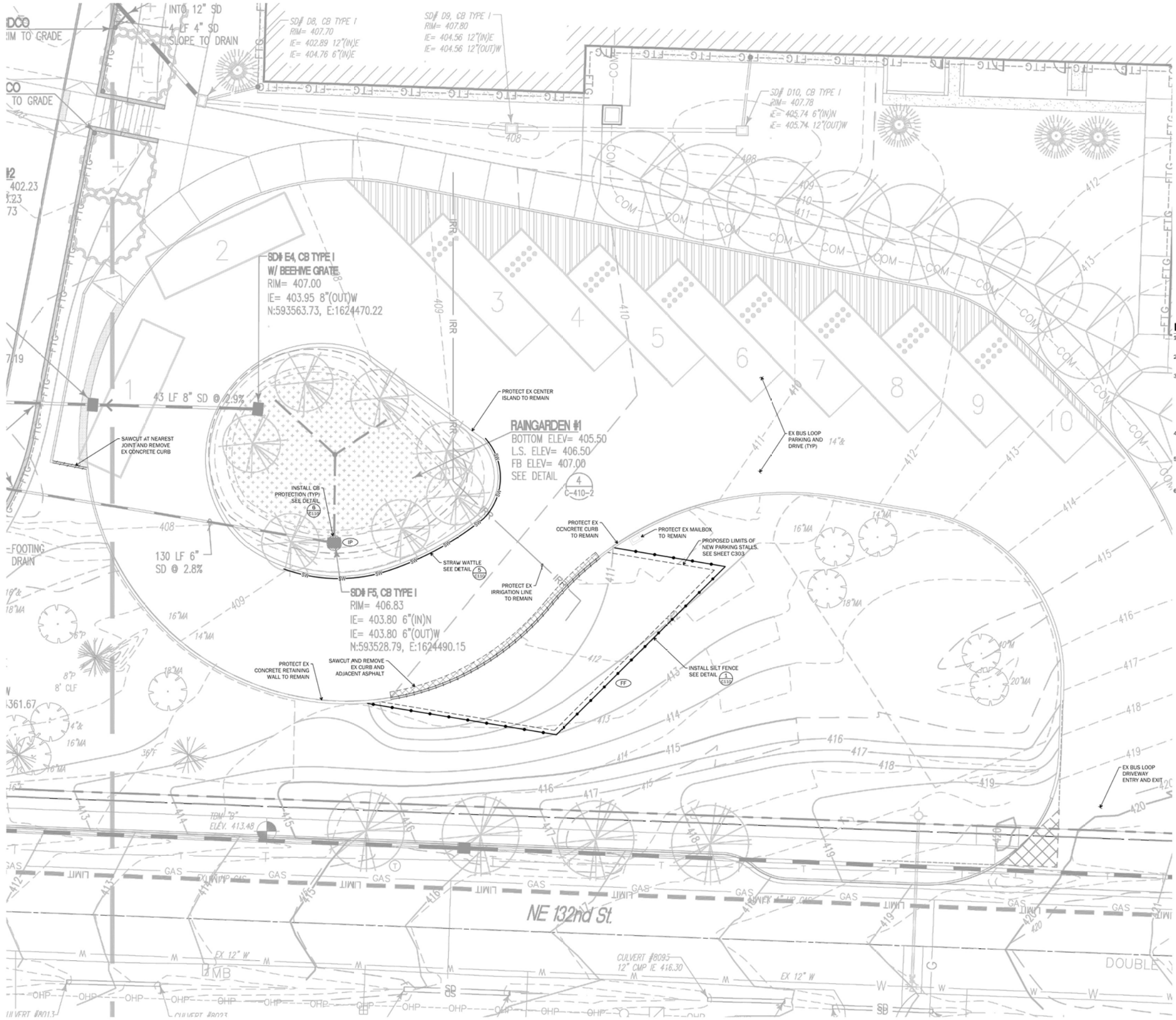
06/14/2023

Date:		02/24/23
Job No.:		22216.00
Drawn By:		DJD
Checked by:		SSE
Revisions		
#	Date	Description

DEMOLITION &
TESC PLAN - POND

C102

SE 1/4 OF THE SW 1/4 OF SECTION 32, TOWNSHIP 26 NORTH, RANGE 5 EAST, W.M.



LEGEND

PROPERTY LINE	N 72°43'00" E - 46.81'
SAWCUT LINE	
REMOVE CURBING	
REMOVE ASPHALT PAVEMENT	
REMOVE CONCRETE PAVEMENT	
DEMOLISH BUILDING	
REMOVE TREE(S)	
FENCING	
FF FILTER FABRIC FENCING	
INLET PROTECTION	IP
TREE PROTECTION	YES
STRAW WATTLE	SW

- NOTES**
- SEE CITY OF KIRKLAND GENERAL EROSION/SEDIMENTATION CONTROL NOTES ON SHEET C000.
 - PROVIDE CATCH BASIN PROTECTION AT ALL CATCH BASINS RECEIVING SURFACE FLOW FROM CONSTRUCTION AREAS. (TYP.)
 - CONTRACTOR IS RESPONSIBLE FOR TREATING ALL CONSTRUCTION STORMWATER RUNOFF TO DISCHARGE AT NO MORE THAN 25 NTU OVER BASELINE. THE SYSTEM SHALL BE DESIGNED, INSTALLED, AND OPERATED BY THE CONTRACTOR. THIS SYSTEM MAY INCLUDE BUT NOT LIMITED TO: SURFACE PONDS, PERMANENT VAULTS, BAKER TANKS, FILTRATION SYSTEMS, PUMPS AND HOSES ETC. THE SYSTEM MUST REMAIN UNTIL THE AREA OF THE SITE IT IS TREATING HAS BEEN STABILIZED, AND IT HAS BEEN APPROVED FOR REMOVAL BY BOTH THE CITY AND THE PROJECT CIVIL ENGINEER.
 - CONTRACTOR SHALL REFER TO CITY OF KIRKLAND PUBLIC WORKS PRE-APPROVED PLANS POLICY E-1: USE OF TEMPORARY SEDIMENT SETTLING TANKS.
 - CONTRACTOR TO PROVIDE ALL WEATHER WORKING THROUGH THE CONSTRUCTION SITE AS NECESSARY. NO PAYMENT WILL BE MADE FOR UNSUITABLE SOILS IN THIS AREA THAT ARE NOT PROTECTED DURING THE DURATION OF CONSTRUCTION ACTIVITIES.
 - SEE SHEET C110, AND THE CITY OF KIRKLAND PRE-APPROVED PLANS, FOR OTHER DETAILS WHICH MAY BE OPTIONS TO UTILIZE IN MANAGING THE EROSION AND SEDIMENT CONTROL ON THE SITE.

Call before you dig
Dig 8-1-1
1-800-424-5555
UNDERGROUND
SERVICE (USA)

City of Kirkland
04/14/2023

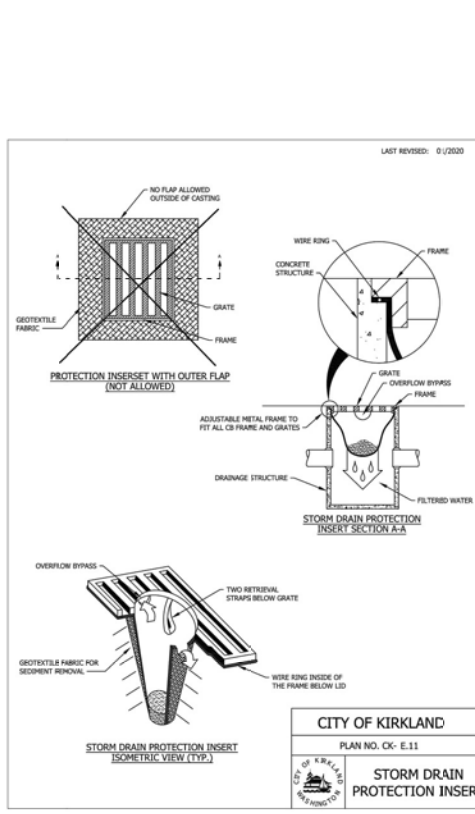
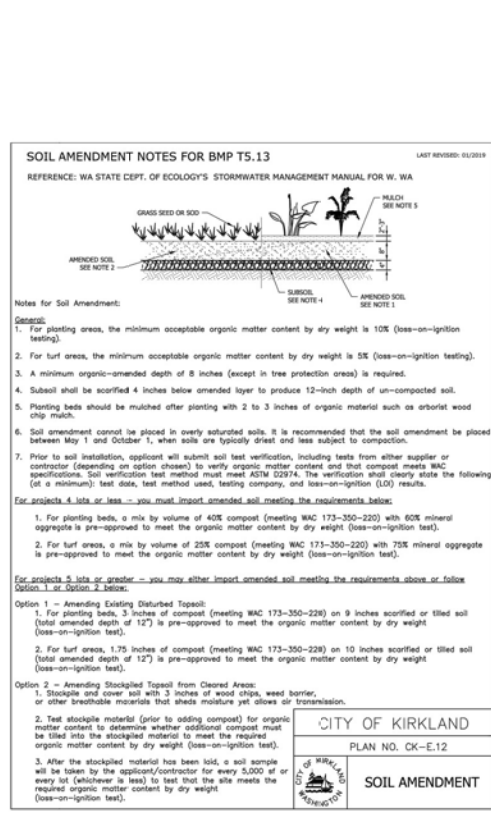
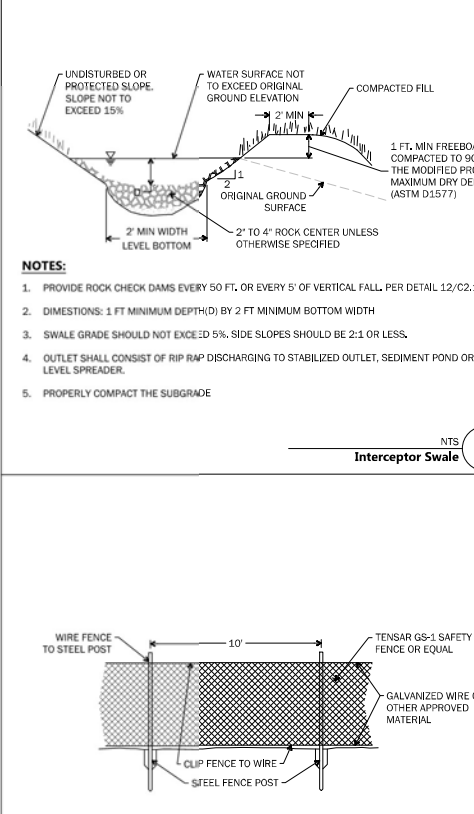
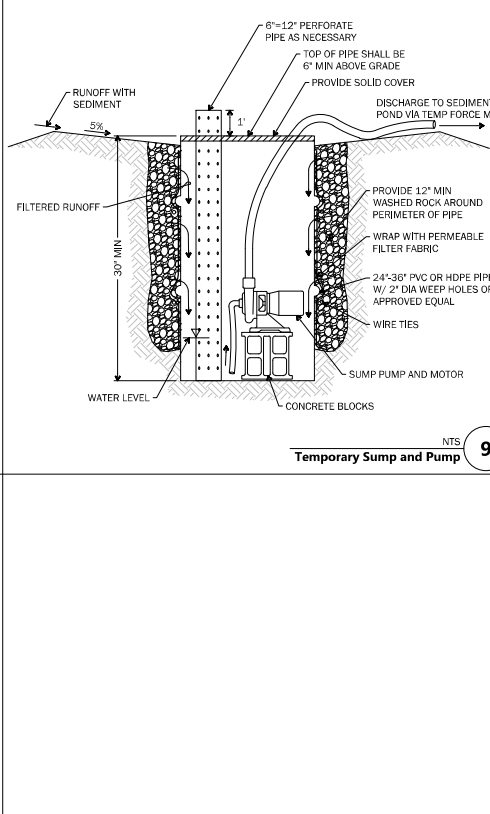
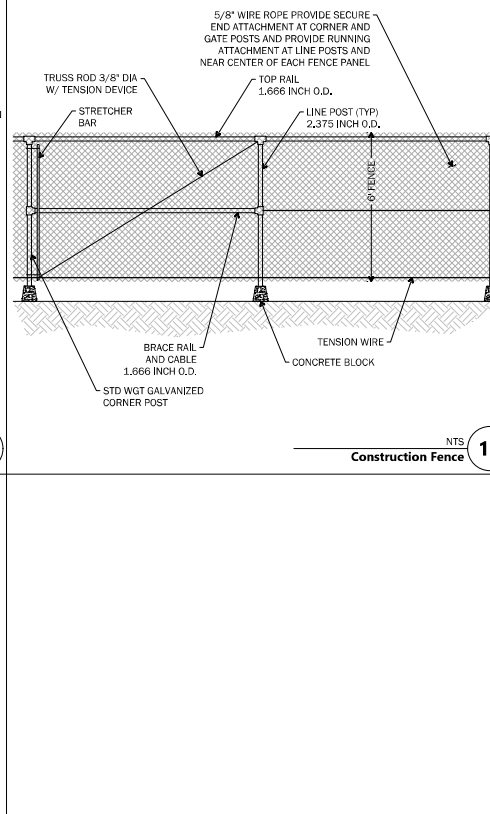
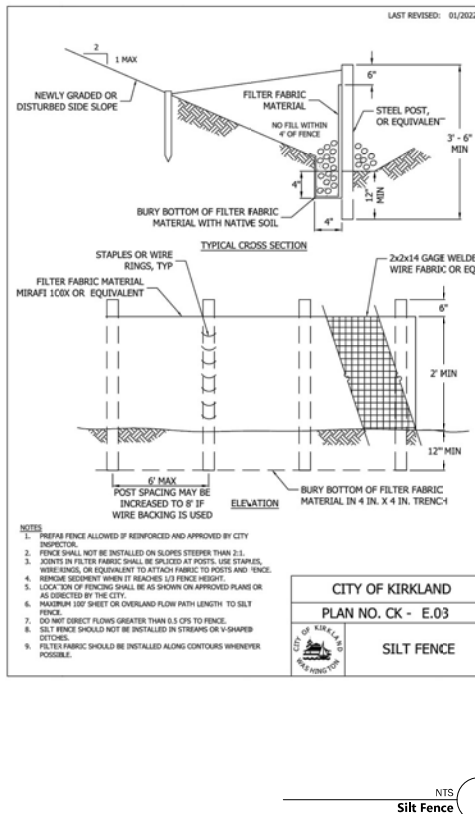
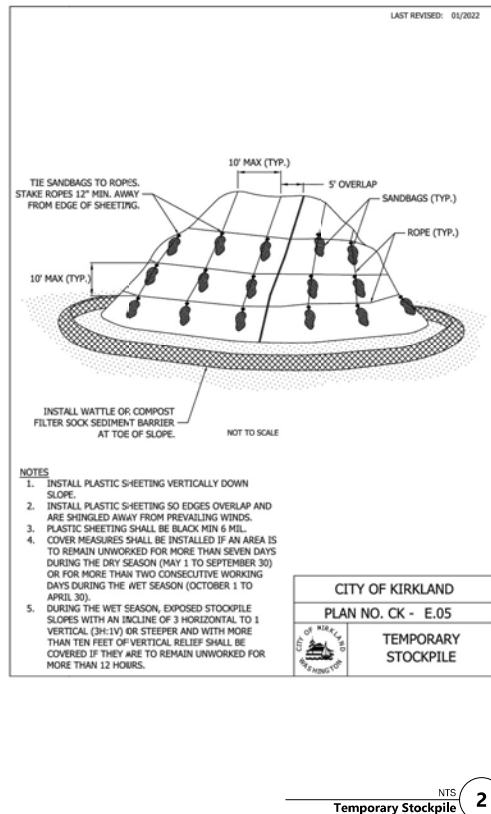
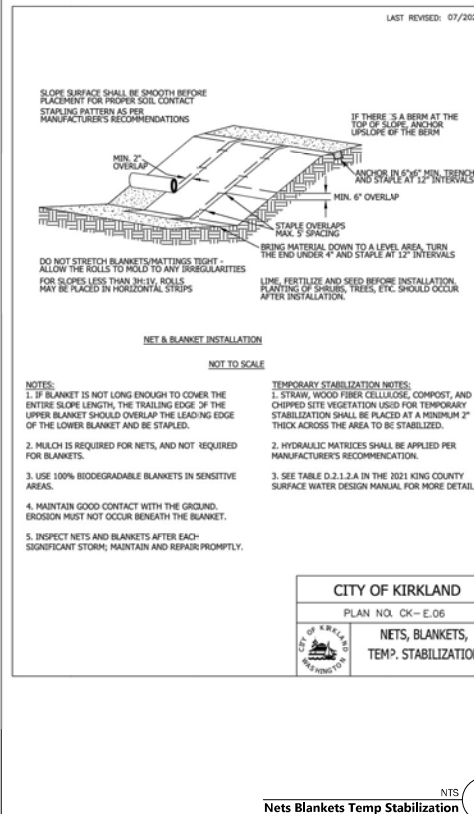
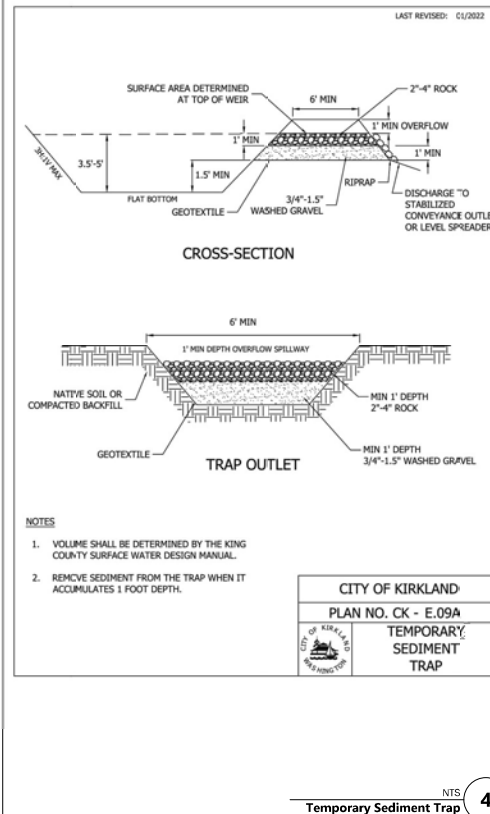
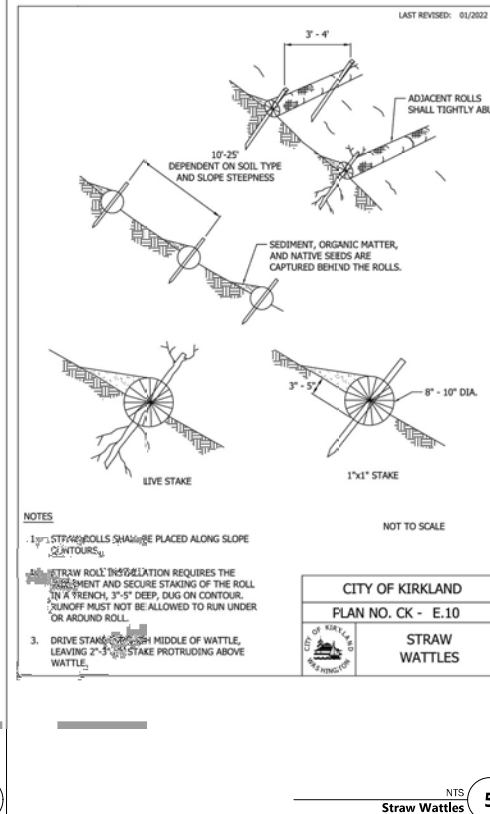
JACOBSON
CONSULTING ENGINEERS

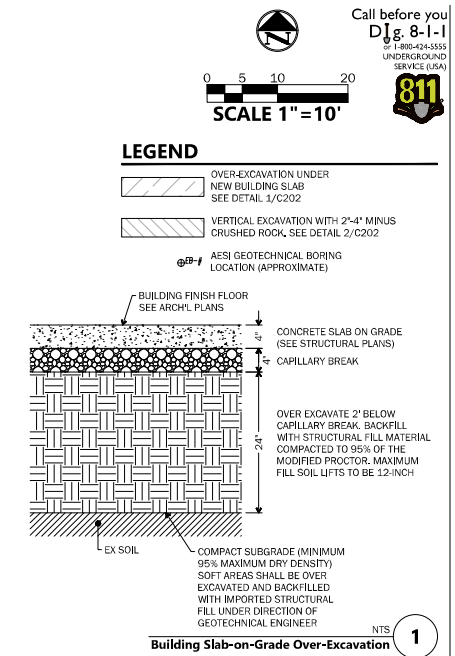
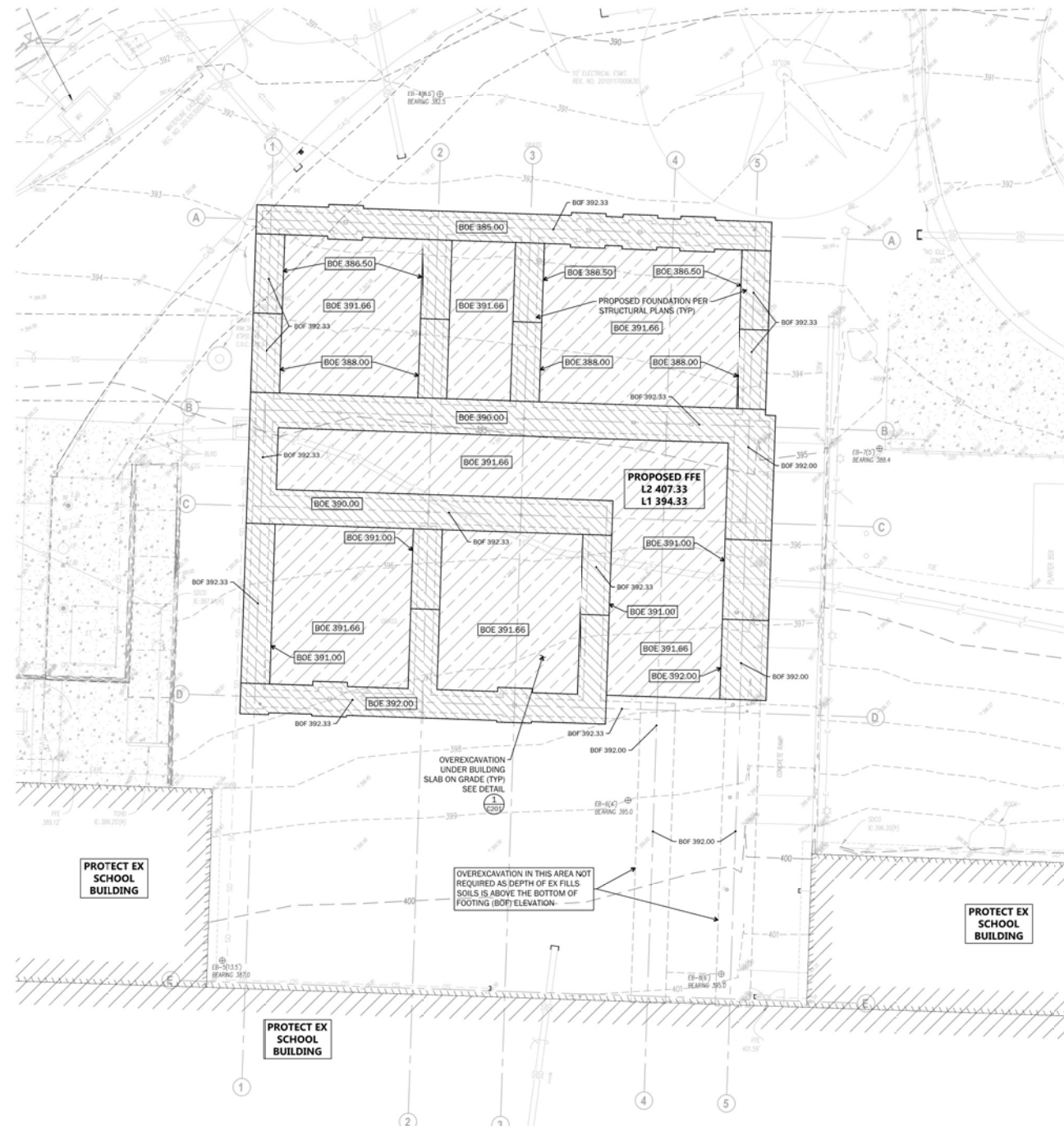
LAKE WASHINGTON SCHOOL DISTRICT
FINN HILL MS ADDITION
8040 NE 132nd St.
KIRKLAND, WA 98034

Date:	02/24/23	
Job No.:	22216.00	
Drawn By:	DJD	
Checked by:	SSE	
Revisions		
#	Date	Description

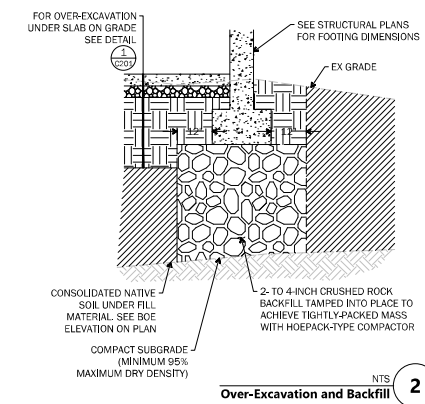
DEMOLITION &
TESC PLAN -
PARKING

C103





WHERE EXCAVATION BELOW PERIMETER FOOTING ADJACENT TO EXISTING BUILDING, EXCAVATE NO MORE THAN 8 LF ALTERNATING SLOTS. EACH SLOT NEEDS TO BE EXCAVATED, FILLED BEFORE THE IN BETWEEN SLOTS ARE EXCAVATED AND FILLED



Over-Excavation and Backfill

**LAKE WASHINGTON SCHOOL DISTRICT
FINN HILL MS ADDITION**

8040 NE 132nd St.
KIRKLAND, WA 98034

Date:	02/24/23	
Job No.:	22216.00	
Drawn By:	DJD	
Checked by:	SSE	
Revisions		
#	Date	Description

OVEREXCAVATION
PLAN

C201