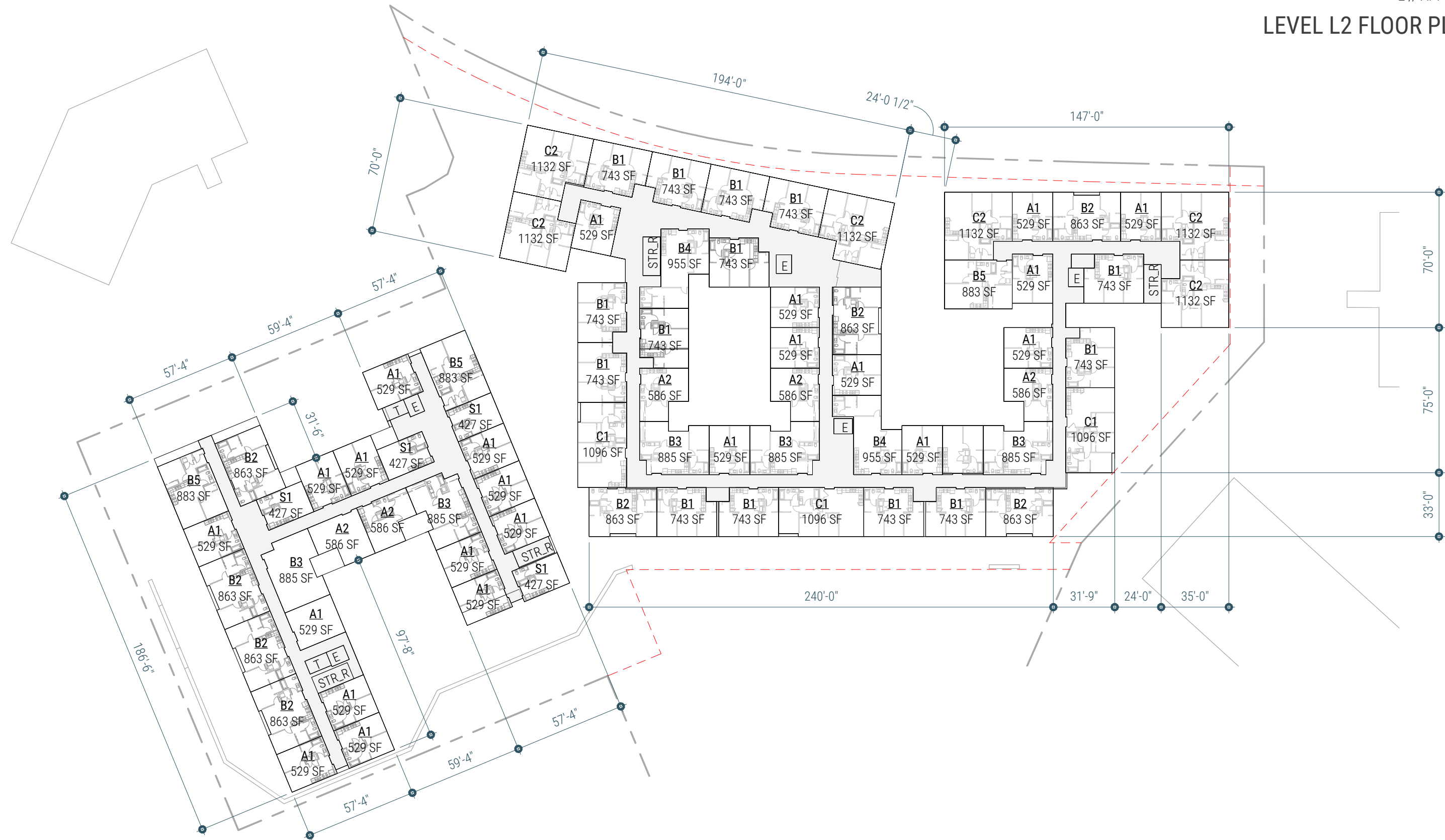


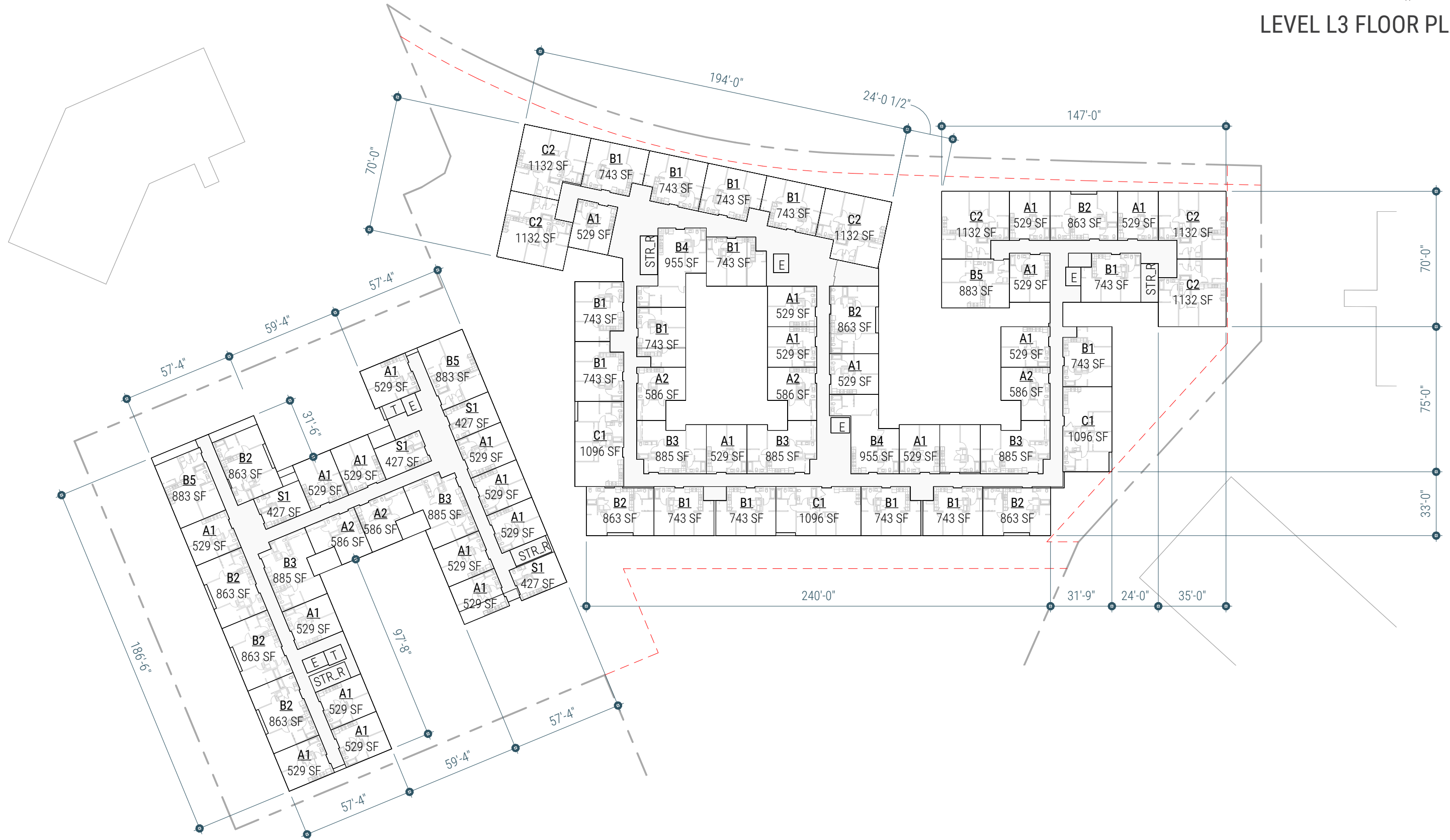
LEVEL L1 FLOOR PLAN



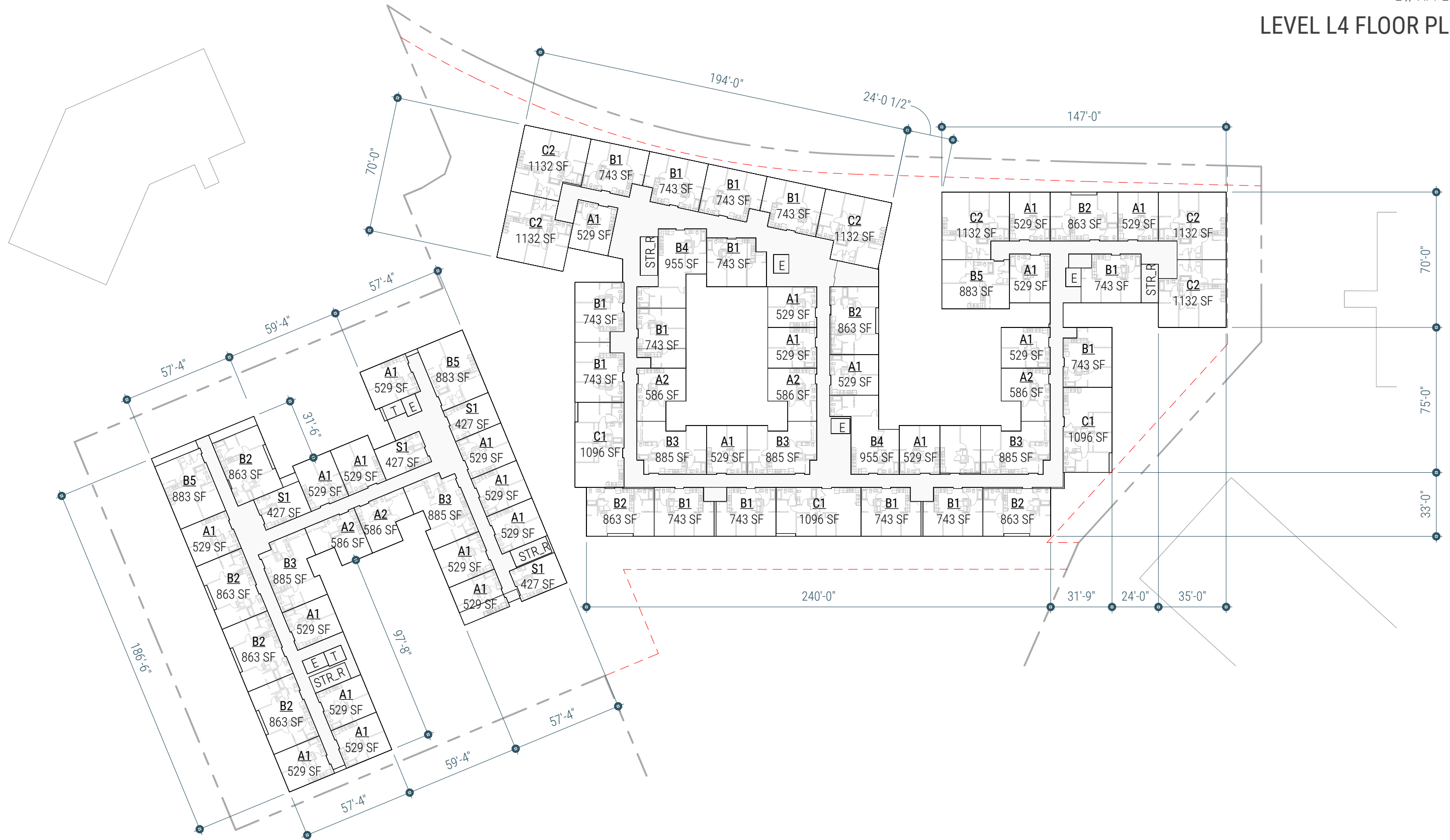
LEVEL L2 FLOOR PLAN



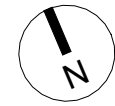
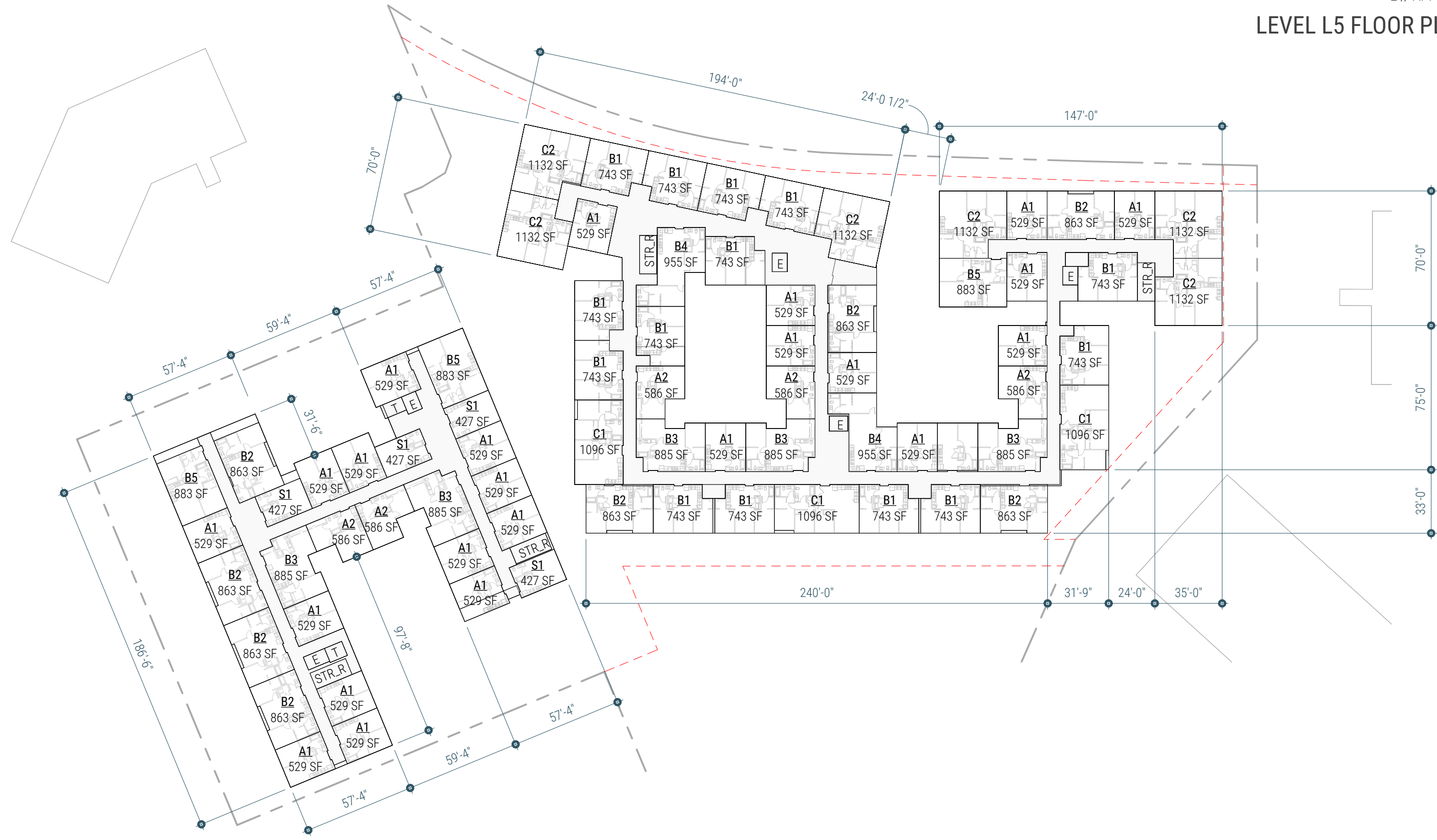
LEVEL L3 FLOOR PLAN



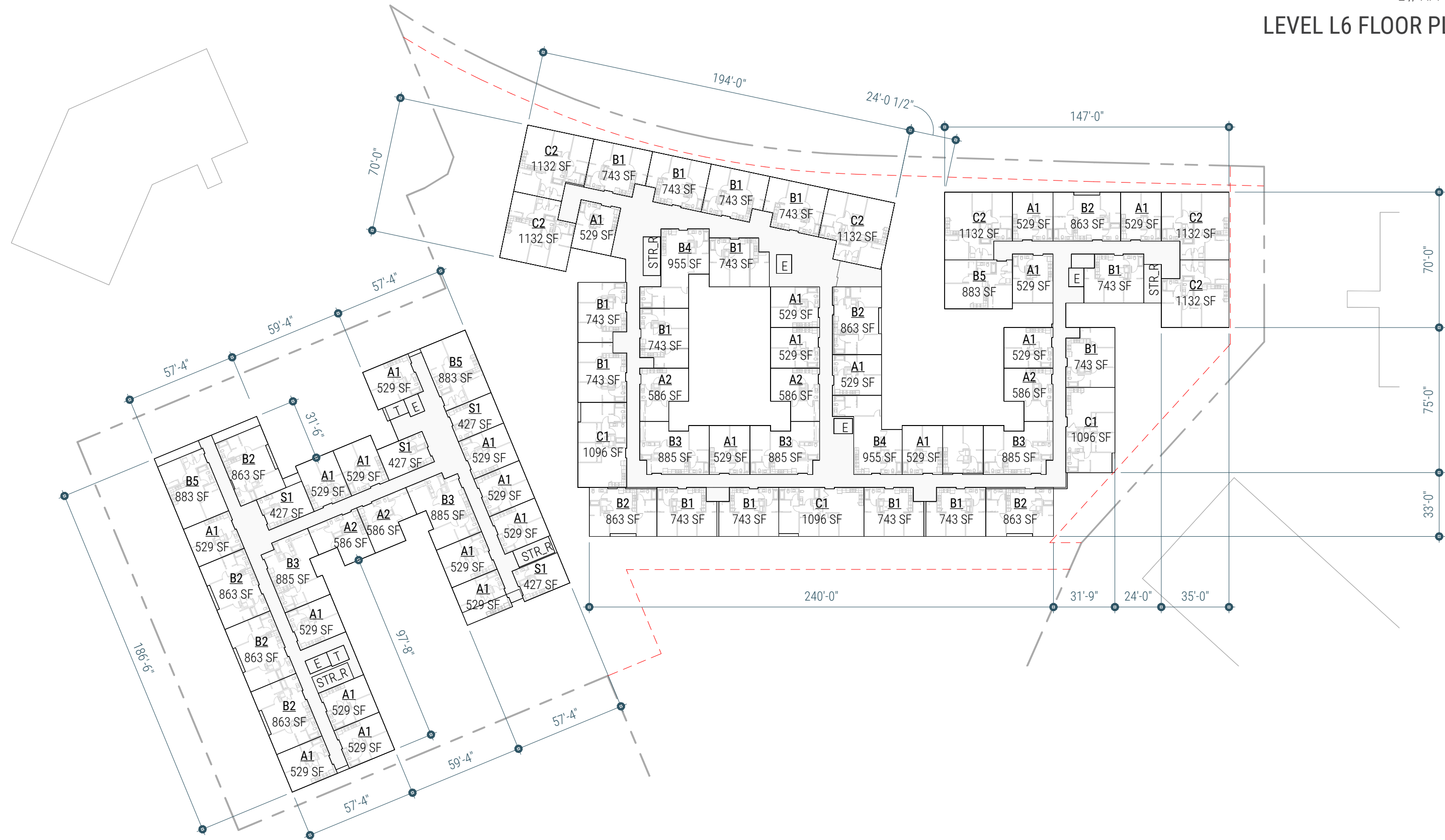
LEVEL L4 FLOOR PLAN



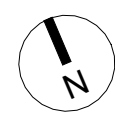
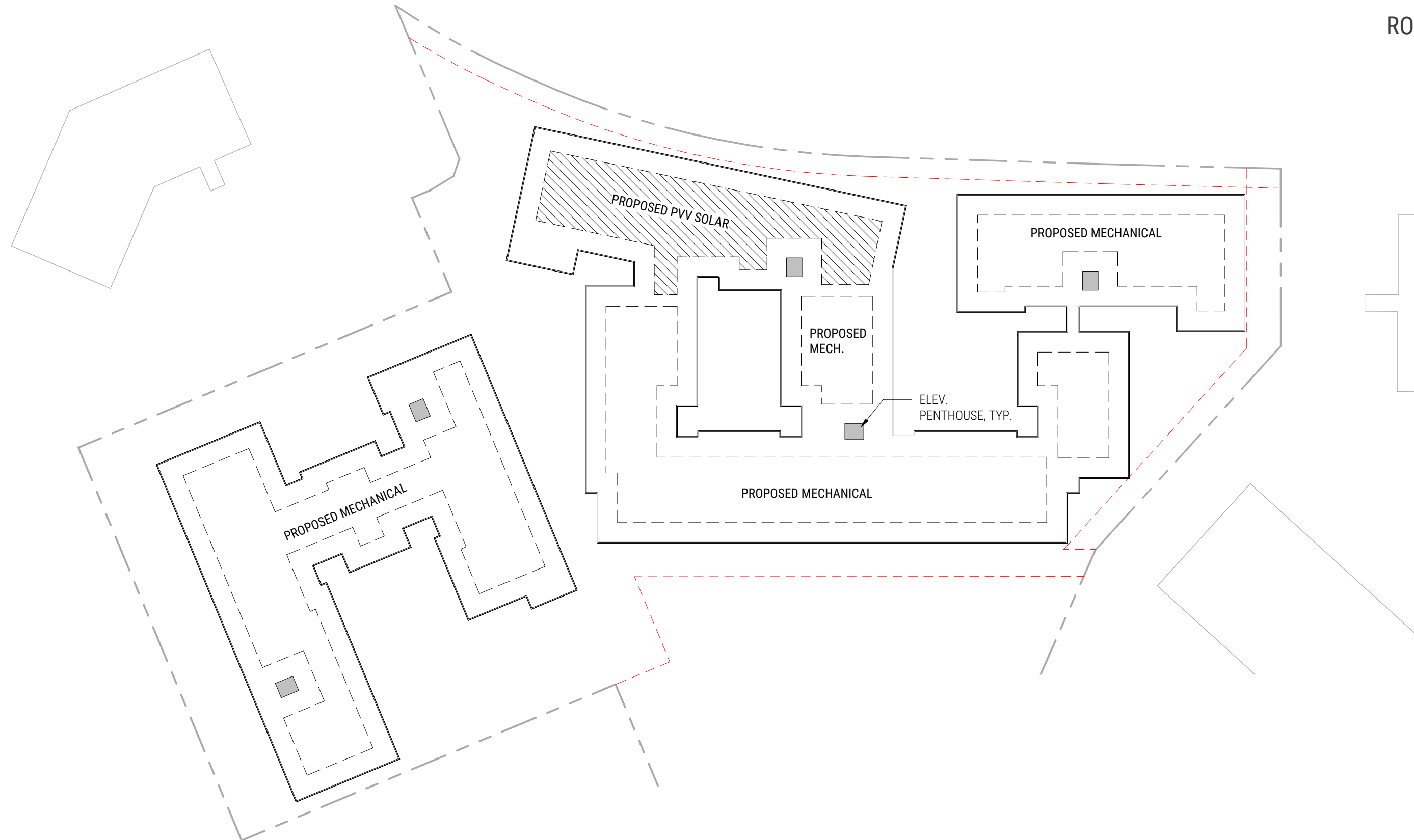
LEVEL L5 FLOOR PLAN



LEVEL L6 FLOOR PLAN



ROOF PLAN



SOLAR STUDY - SPRING EQUINOX



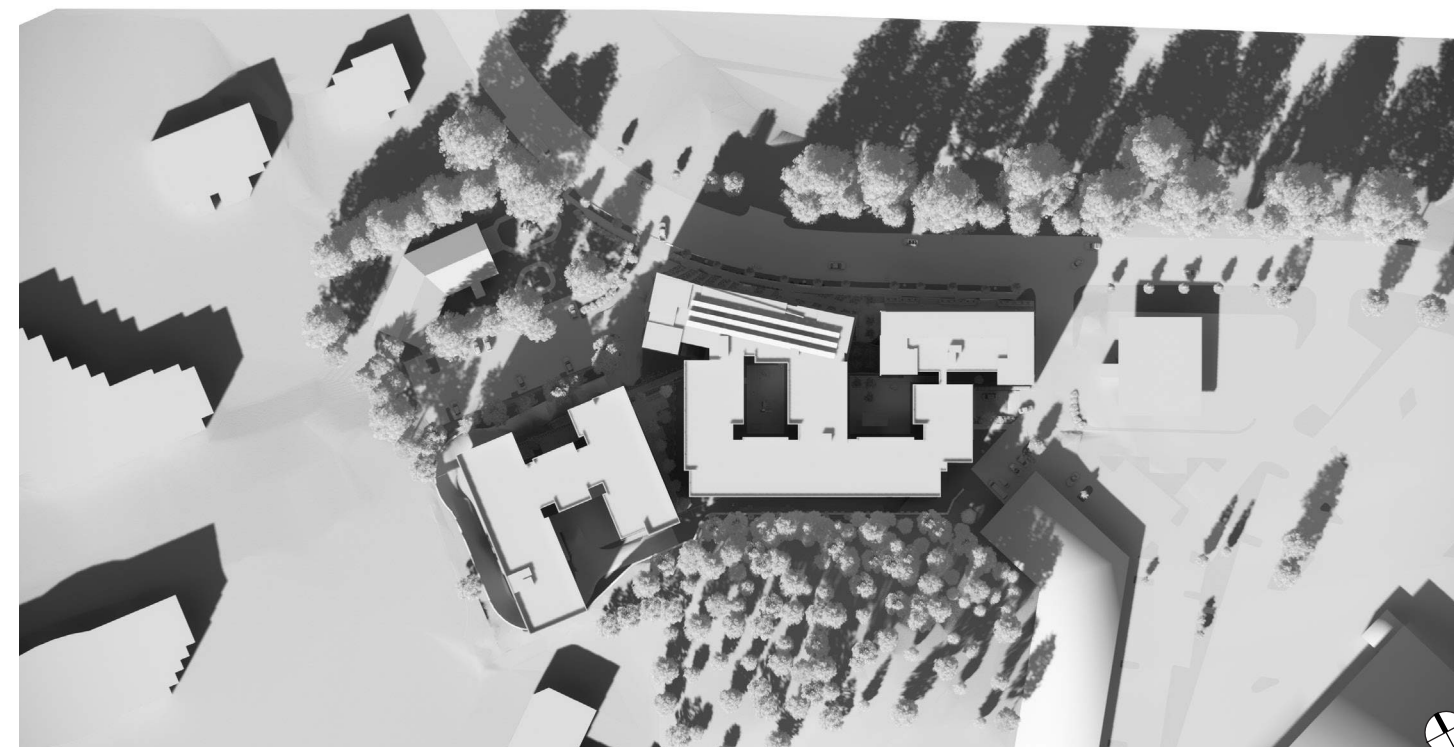
SOLAR STUDY // SPRING EQUINOX 03.21 - 6:00AM



SOLAR STUDY // SPRING EQUINOX 03.21 - 9:00AM

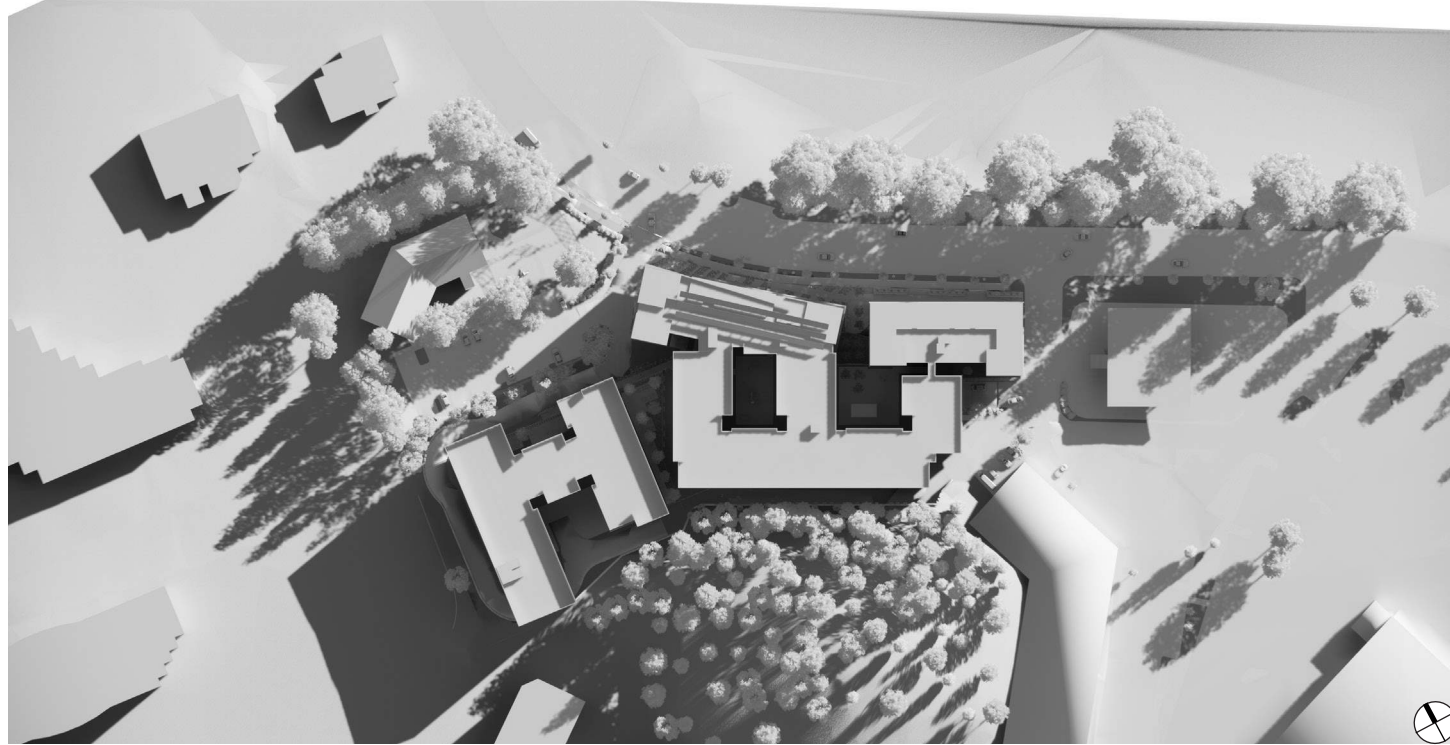


SOLAR STUDY // SPRING EQUINOX 03.21 - NOON

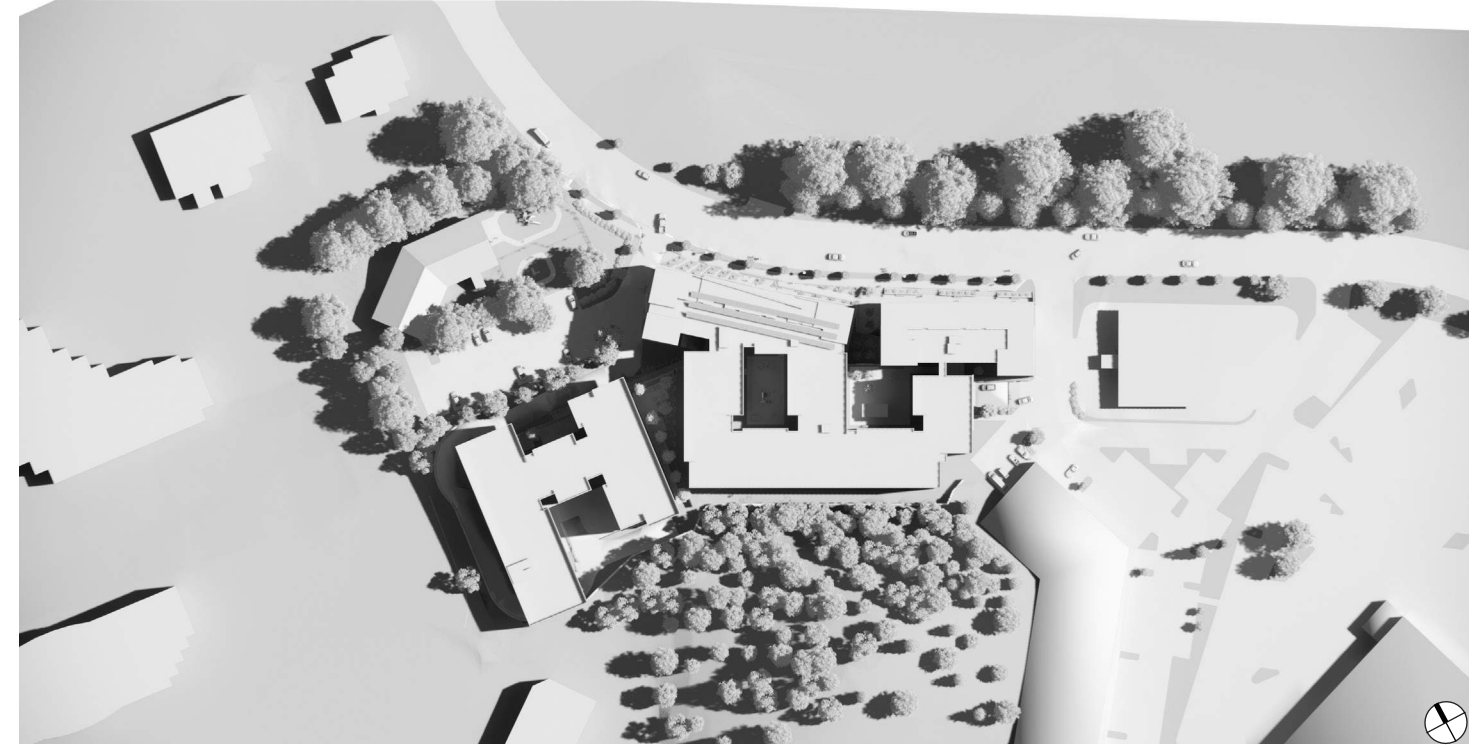


SOLAR STUDY // SPRING EQUINOX 03.21 - 3:00PM

SOLAR STUDY - SUMMER SOLSTICE



SOLAR STUDY // SUMMER SOLSTICE 06.21 - 6:00AM



SOLAR STUDY // SUMMER SOLSTICE 06.21 - 9:00AM



SOLAR STUDY // SUMMER SOLSTICE 06.21 - NOON

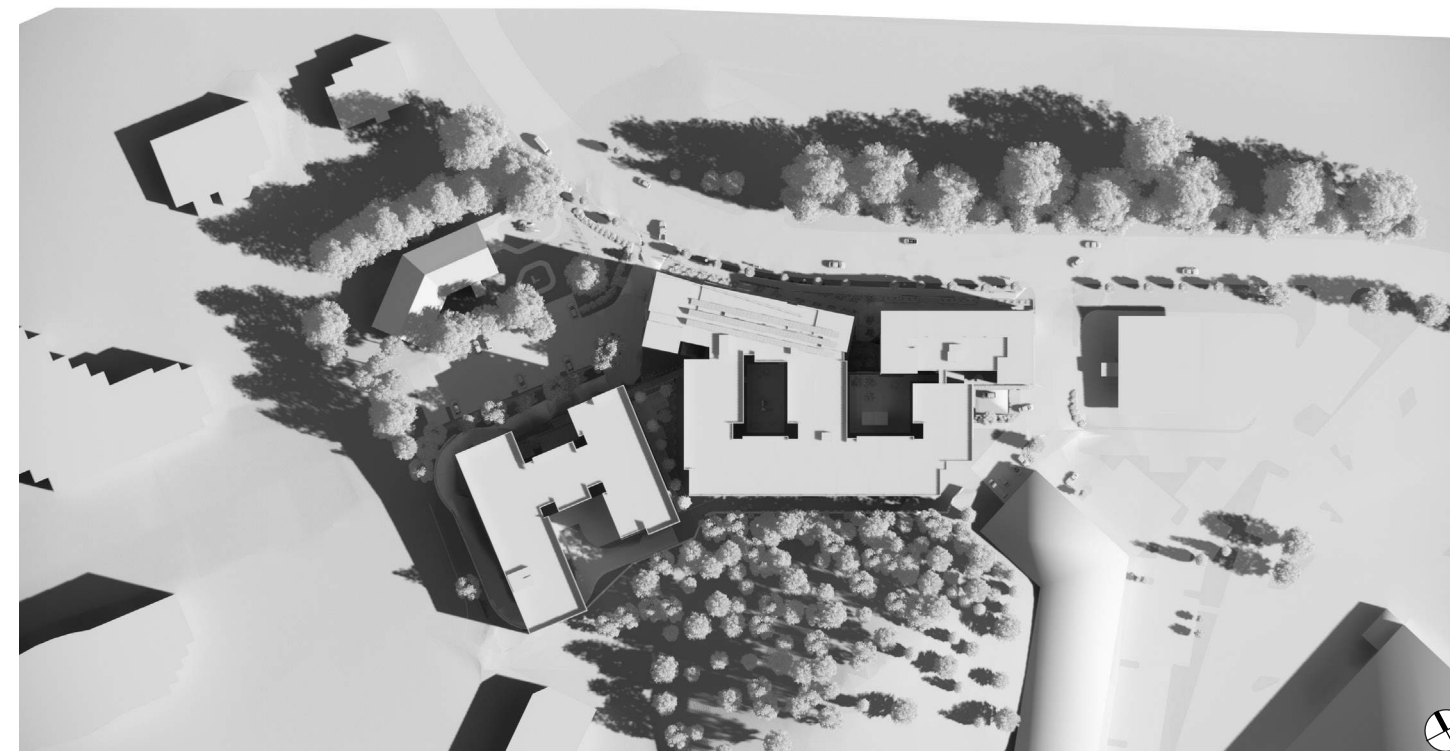


SOLAR STUDY // SUMMER SOLSTICE 06.21 - 3:00PM

SOLAR STUDY - FALL EQUINOX



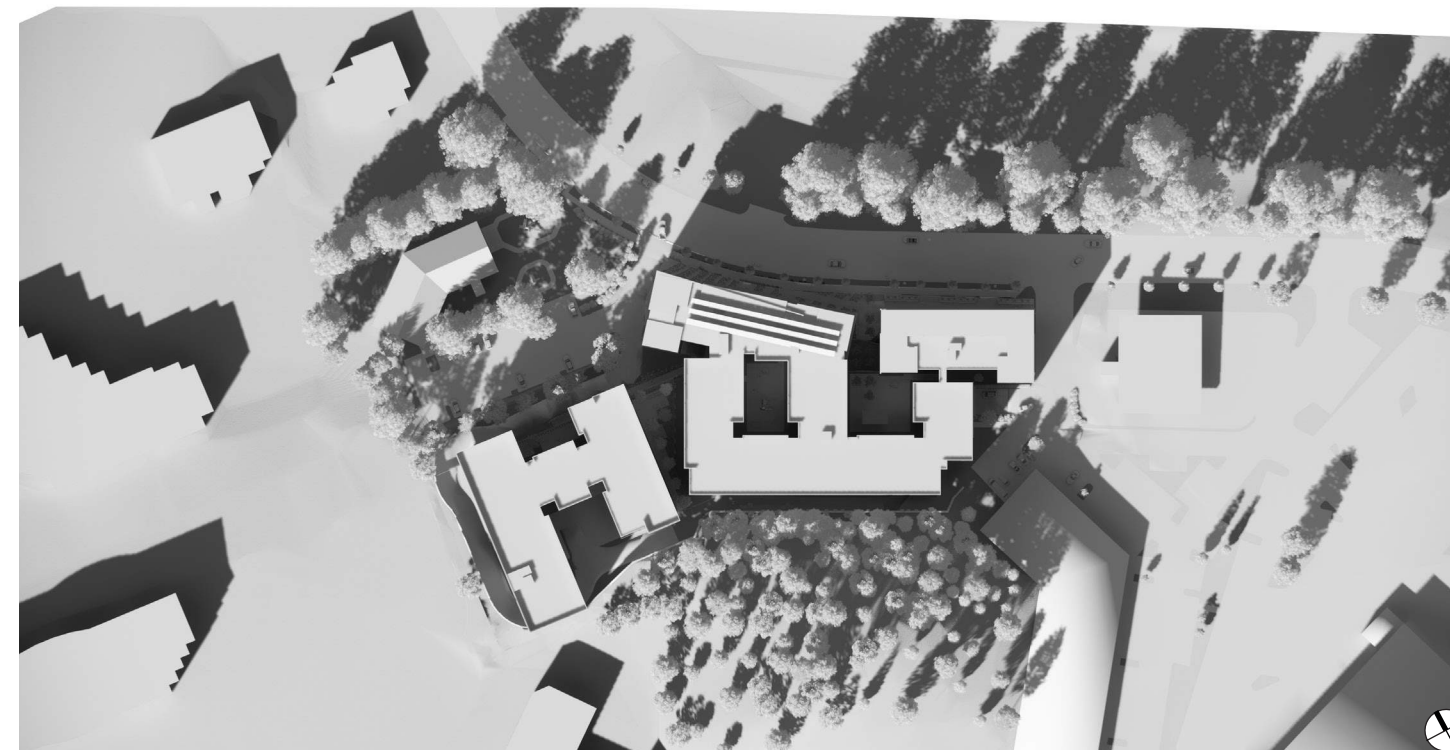
SOLAR STUDY // FALL EQUINOX 09.21 - 6:00AM



SOLAR STUDY // FALL EQUINOX 09.21 - 9:00AM

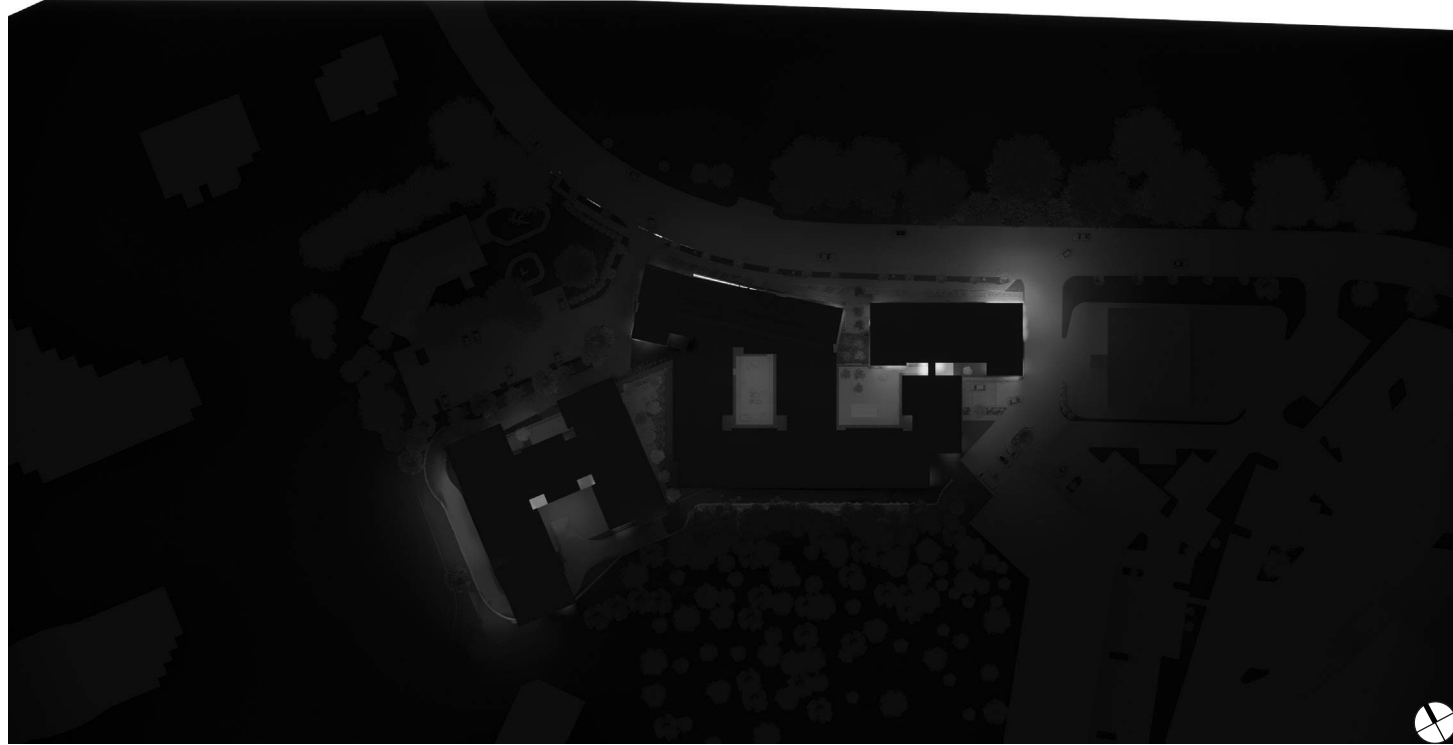


SOLAR STUDY // FALL EQUINOX 09.21 - NOON

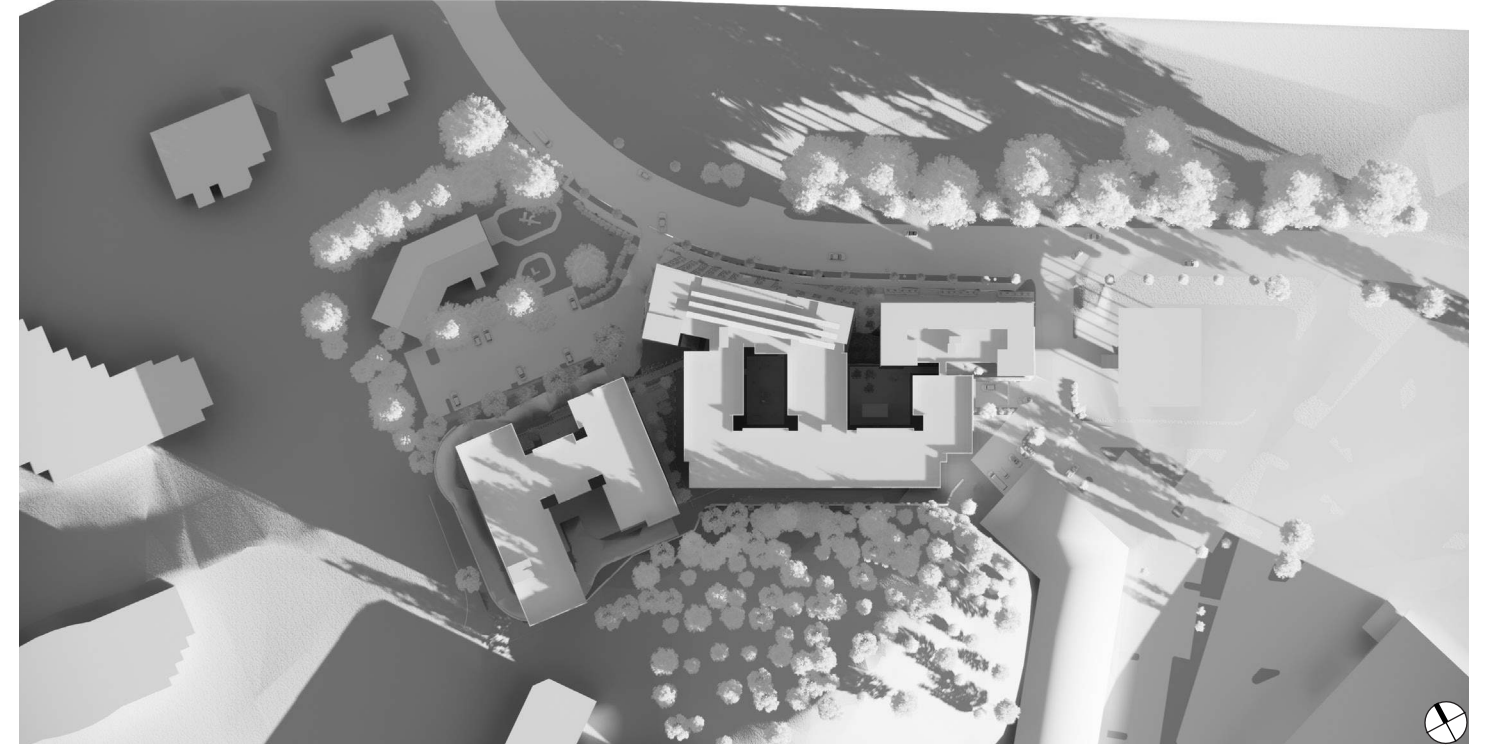


SOLAR STUDY // FALL EQUINOX 09.21 - 3:00PM

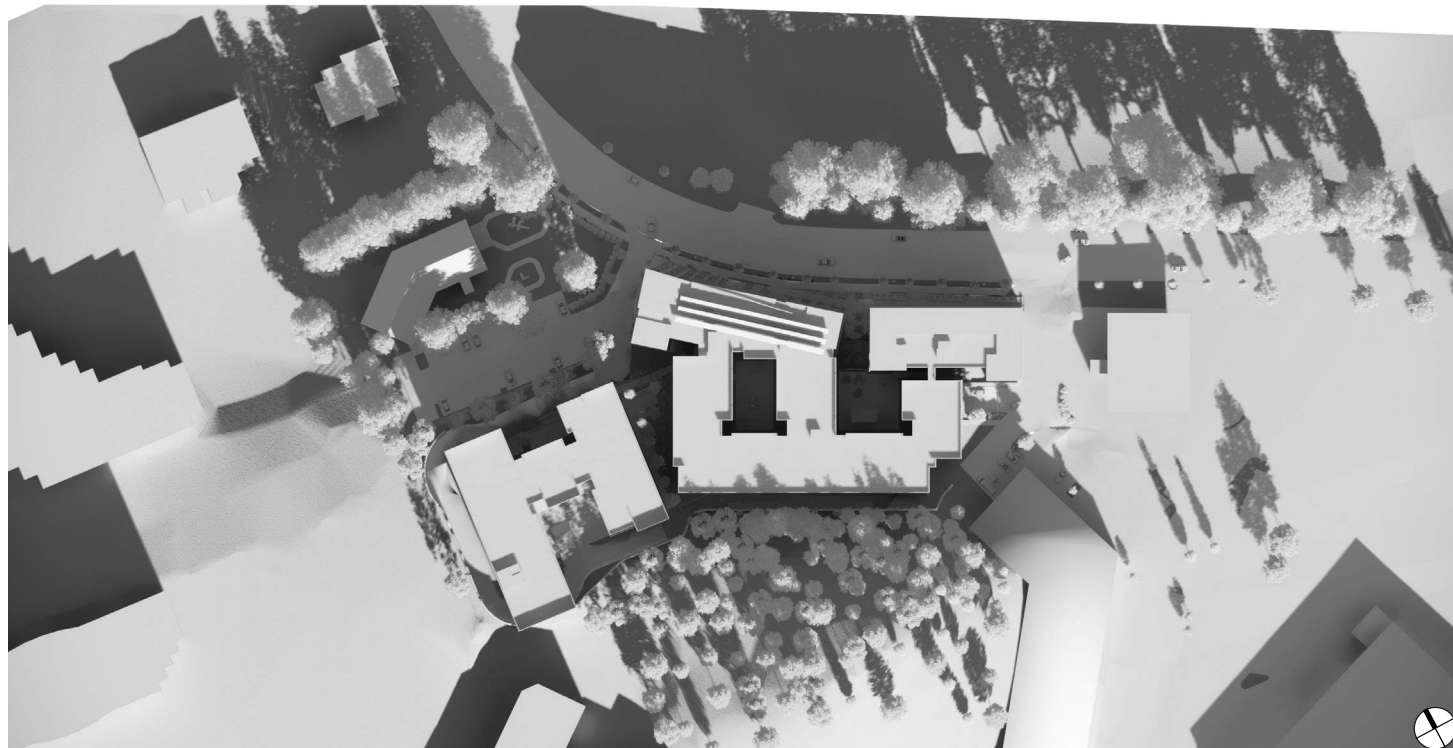
SOLAR STUDY - WINTER SOLSTICE



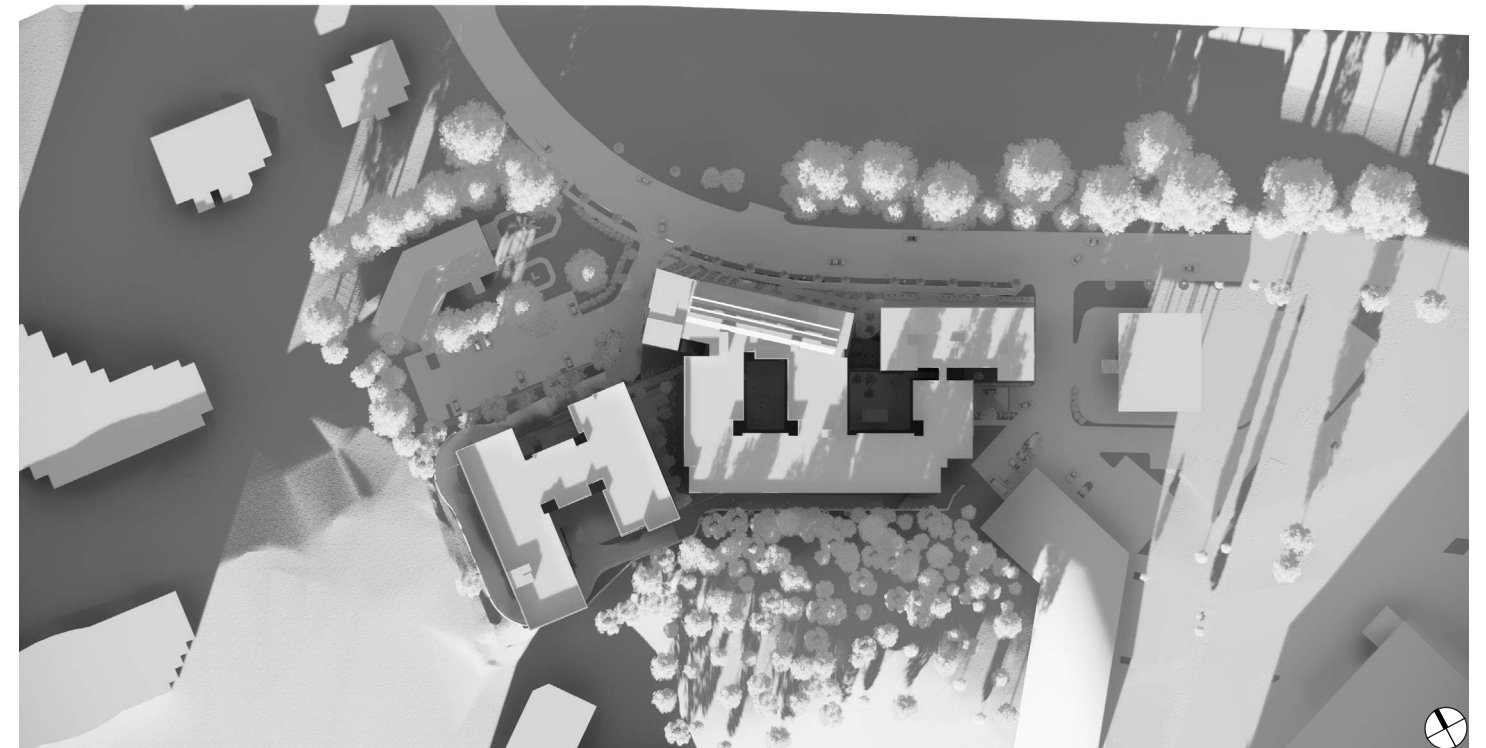
SOLAR STUDY // WINTER SOLSTICE 12.21 - 6:00AM



SOLAR STUDY // WINTER SOLSTICE 12.21 - 9:00AM



SOLAR STUDY // WINTER SOLSTICE 12.21 - NOON



SOLAR STUDY // WINTER SOLSTICE 12.21 - 3:00PM

BUILDING DETAILS AND MATERIALS

The DRB discussed how building materials and color can play a role in articulation of the building form and encouraged the applicant to explore this and provide options to the Board at the Design Response Conference.

Encourage the integration of ornament and applied art with the structures and the site environment. For example, significant architectural features should not be hidden, nor should the urban context be overshadowed. Emphasis should be placed on highlighting building features such as doors, windows, eaves, and on materials such as wood siding and ornamental masonry. Ornament may take the form of traditional or contemporary elements. Original artwork or hand-crafted details should be considered in special areas. Ornament and applied art can be used to emphasize the edges and transition between public and private space, and between walls to ground, roof to sky, and architectural features to adjacent elements. Ornament may consist of raised surfaces, painted surfaces, ornamental or textured banding, changing of materials, or lighting.

Use a variety of quality building materials such as brick, stone, timber, and metal, to add visual interest to the buildings and reduce their perceived scale. Masonry or other durable materials should be used near the ground level (first 2 feet above sidewalk or ground level).

MATERIAL SCHEME:

- FB-1 CERACLAD// URBAN CEDAR// HONEY
- FB-2 CERACLAD// CONTEMPORARY SMOOTH// ASH
- FB-3 CERACLAD// CASTSTRIPE// ASH
- FB-4 CERACLAD// 8 REVEAL// SILK
- FB-5 CERACLAD// CONTEMPORARY SMOOTH// SUMI
- FB-6 CERACLAD// CASTSTRIPE// CHARCOAL
- FB-7 CERACLAD// CONTEMPORARY SMOOTH// CUSTOM
- FB-8 CERACLAD// CONTEMPORARY SMOOTH// CUSTOM
- FB-9 CERACLAD// CONTEMPORARY SMOOTH// PEARL
- FB-10 CERACLAD// GRID 9// GRAY

SHARED MATERIAL SCHEME:

- CN-1 CONCRETE// SEALED
- CN-2 HANOVER// CONCRETE PAVER// GRAY TONES
- MR-1 REVAMP// METAL RAILING
- WD-1 WOOD PAVERS// IPE

