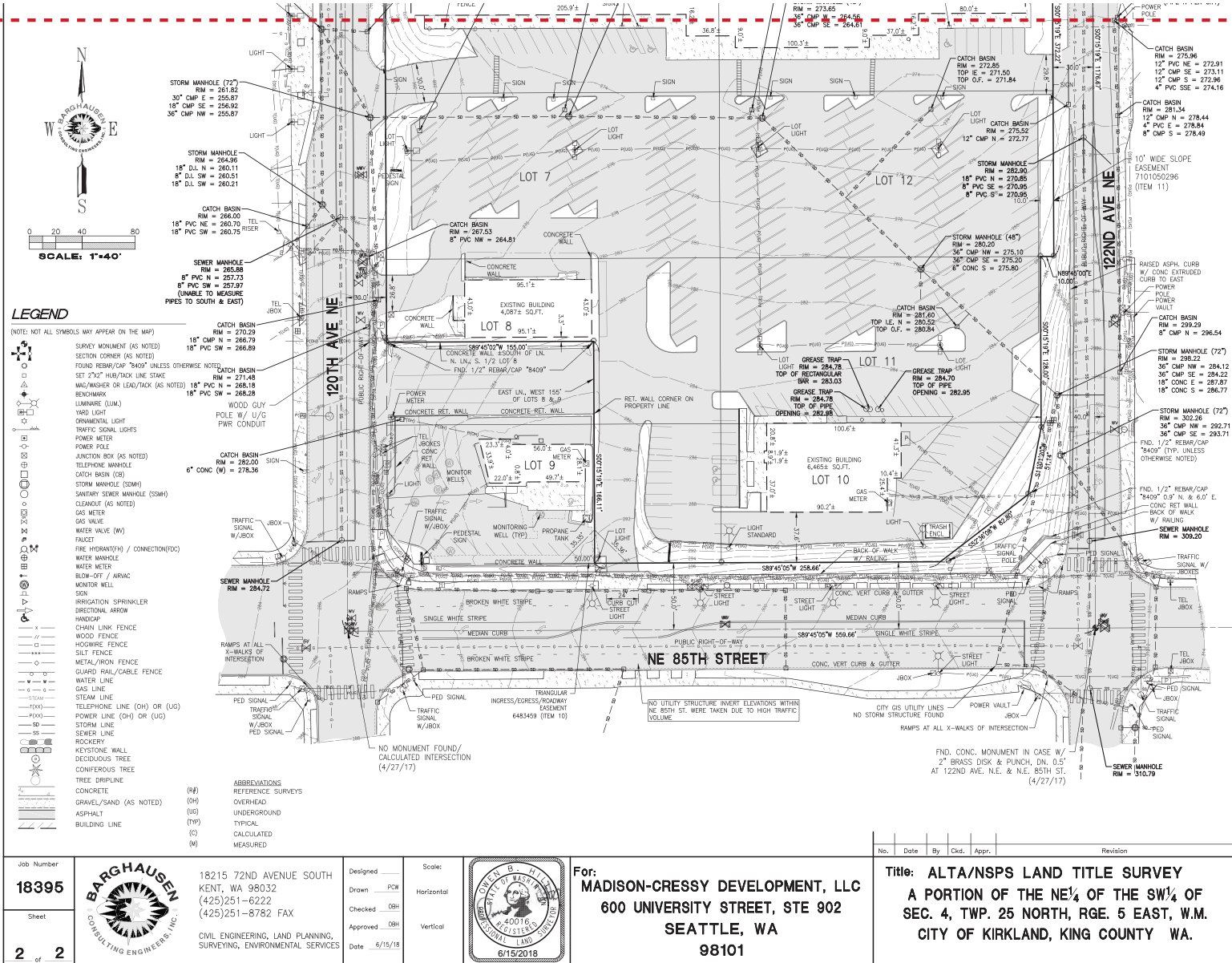


MATCHLINE



LEGEND

- (NOTE: NOT ALL SYMBOLS MAY APPEAR ON THE MAP)
- Survey Monument (AS NOTED)
 - Section Corner (AS NOTED)
 - Found Rebar/CAP "8409" UNLESS OTHERWISE NOTED
 - Set "2x2" Hub/Tack Line Stake
 - Washer/Washer or Lead/Tack (AS NOTED)
 - Benchmark
 - Luminaire (LUM.)
 - Yard Light
 - Ornamental Light
 - Traffic Signal Lights
 - Power Meter
 - Power Pole
 - Junction Box (AS NOTED)
 - Telephone Manhole
 - Catch Basin (CB)
 - Storm Manhole (SMH)
 - Sanitary Sewer Manhole (SSMH)
 - Cleanout (AS NOTED)
 - Gas Meter
 - Gas Valve
 - Water Valve (WV)
 - Faucet
 - Fire Hydrant / Connection (FHC)
 - Water Manhole
 - Water Meter
 - Blow-off / ARIAC
 - Monitor Well
 - Sign
 - Irrigation Sprinkler
 - Directional Arrow
 - Handicap
 - Chain Link Fence
 - Wood Fence
 - Hogwire Fence
 - Silt Fence
 - Metal/Iron Fence
 - Guard Rail/Cable Fence
 - Water Line
 - Gas Line
 - Steam Line
 - Telephone Line (OH) OR (UG)
 - Power Line (OH) OR (UG)
 - Storm Line
 - Sewer Line
 - Rockery
 - Keystone Wall
 - Deciduous Tree
 - Coniferous Tree
 - Tree Drift Line
- ABBREVIATIONS
- (RF) CONCRETE
 - (S) GRAVEL/SAND (AS NOTED)
 - (A) ASPHALT
 - (B) BUILDING LINE
 - (OH) OVERHEAD
 - (UG) UNDERGROUND
 - (TP) TYPICAL
 - (C) CALCULATED
 - (M) MEASURED

Job Number
18395

Sheet
2 of 2

BARGHAUSEN
CONSULTING ENGINEERS, INC.

18215 72ND AVENUE SOUTH
KENT, WA 98032
(425)251-6222
(425)251-8782 FAX

CIVIL ENGINEERING, LAND PLANNING,
SURVEYING, ENVIRONMENTAL SERVICES

Designed _____
Drawn PCW
Checked OBR
Approved OBR
Date 6/15/18

Scale:
Horizontal
Vertical

SEATTLE
REGISTERED PROFESSIONAL LAND SURVEYOR
6/15/2018

For:
MADISON-CRESSY DEVELOPMENT, LLC
600 UNIVERSITY STREET, STE 902
SEATTLE, WA
98101

No.	Date	By	Ckd.	Appr.	Revision
Title: ALTA/NSPS LAND TITLE SURVEY A PORTION OF THE NE 1/4 OF THE SW 1/4 OF SEC. 4, TWP. 25 NORTH, RGE. 5 EAST, W.M. CITY OF KIRKLAND, KING COUNTY WA.					

File: P:\18000s\18395\survey\18395TA01.dwg Date/Time: 6/15/2018 4:54 PM Scale: 1" = 1' GHILLE Xref: ---