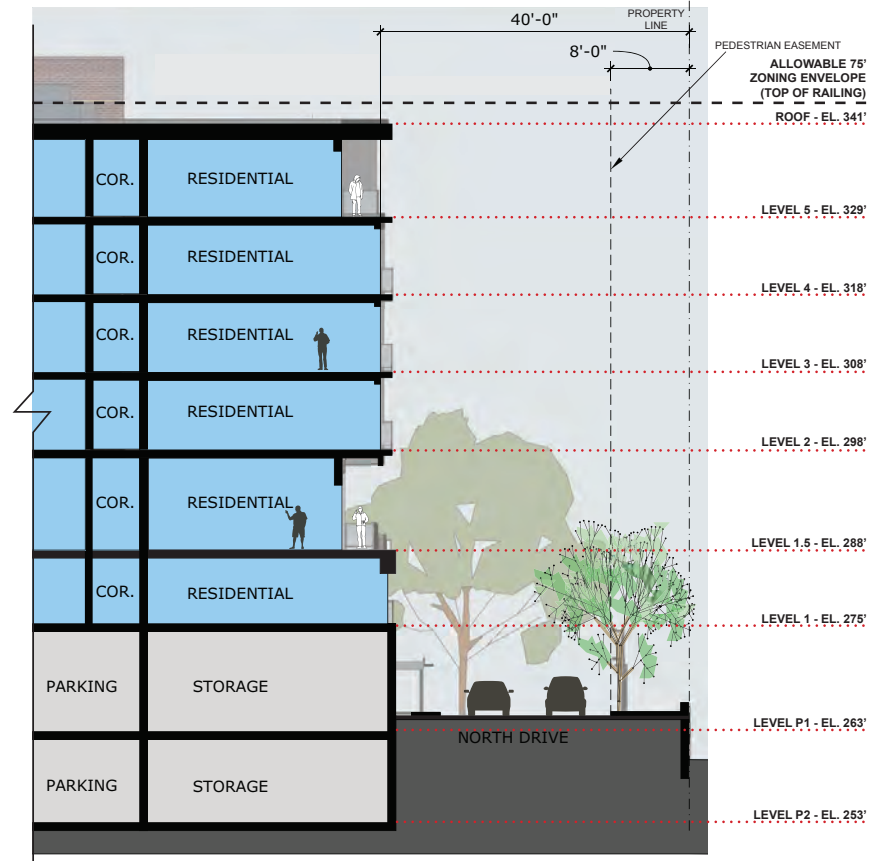


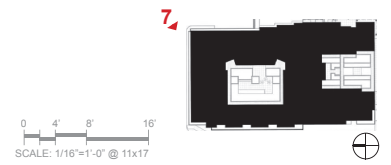
7 BUILDING A - NORTH ELEVATION AT NORTH ACCESS RD.

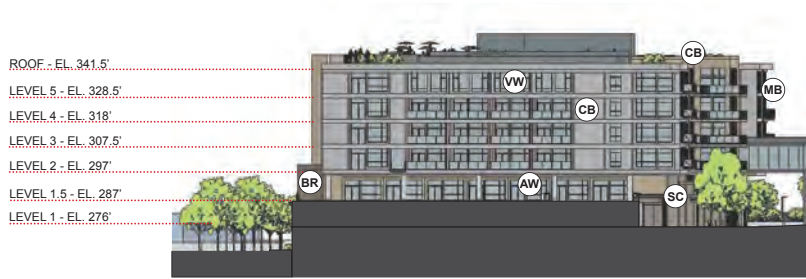


E WALL SECTION

MATERIAL KEY

- | | |
|-----------------------------|----------------------------|
| (AC) ARCHITECTURAL CONCRETE | (FP) FLAT PANEL MTL SIDING |
| (AS) ALUMINUM STOREFRONT | (MB) METAL BALCONIES |
| (AW) ALUMINUM WINDOWS | (ML) METAL LOUVERS |
| (BM) BENT METAL | (SC) STEEL CANOPIES |
| (BR) BRICK | (SS) STANDING SEAM |
| (CB) CEMENT BOARD | (VW) VINYL WINDOWS |
| (CM) CORRUGATED METAL | (WS) WOOD SOFFIT |
| (CS) CORTEN STEEL | |





1 WEST ELEVATION



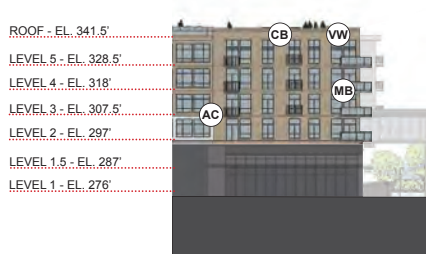
2 NORTH ELEVATION

MATERIAL KEY

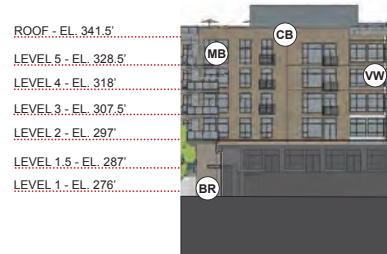
- | | |
|-----------------------------|----------------------------|
| (AC) ARCHITECTURAL CONCRETE | (FP) FLAT PANEL MTL SIDING |
| (AS) ALUMINUM STOREFRONT | (MB) METAL BALCONIES |
| (AW) ALUMINUM WINDOWS | (ML) METAL LOUVERS |
| (BM) BENT METAL | (SC) STEEL CANOPIES |
| (BR) BRICK | (SS) STANDING SEAM |
| (CB) CEMENT BOARD | (VW) VINYL WINDOWS |
| (CM) CORRUGATED METAL | (WS) WOOD SOFFIT |
| (CS) CORTEN STEEL | |



3 EAST ELEVATION



4 COURT EAST ELEVATION



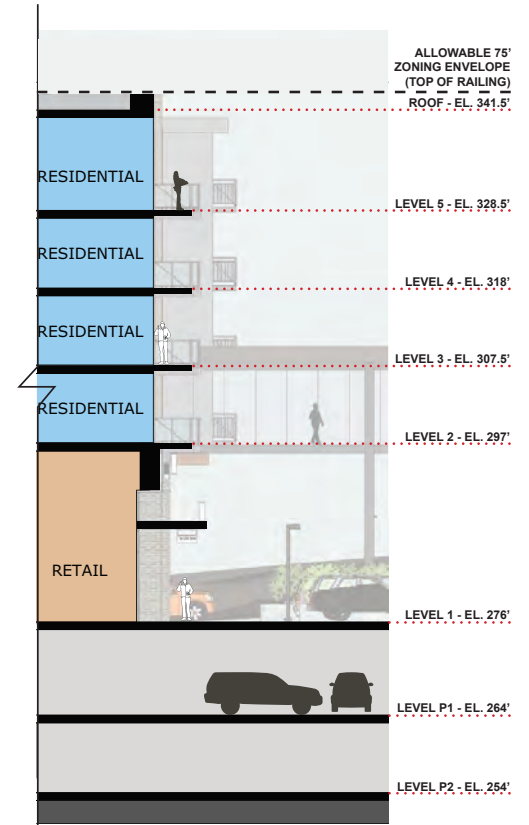
5 COURT WEST ELEVATION



6 SOUTH ELEVATION



1 BUILDING B - SOUTH ELEVATION AT AUTOCOURT



A WALL SECTION

MATERIAL KEY

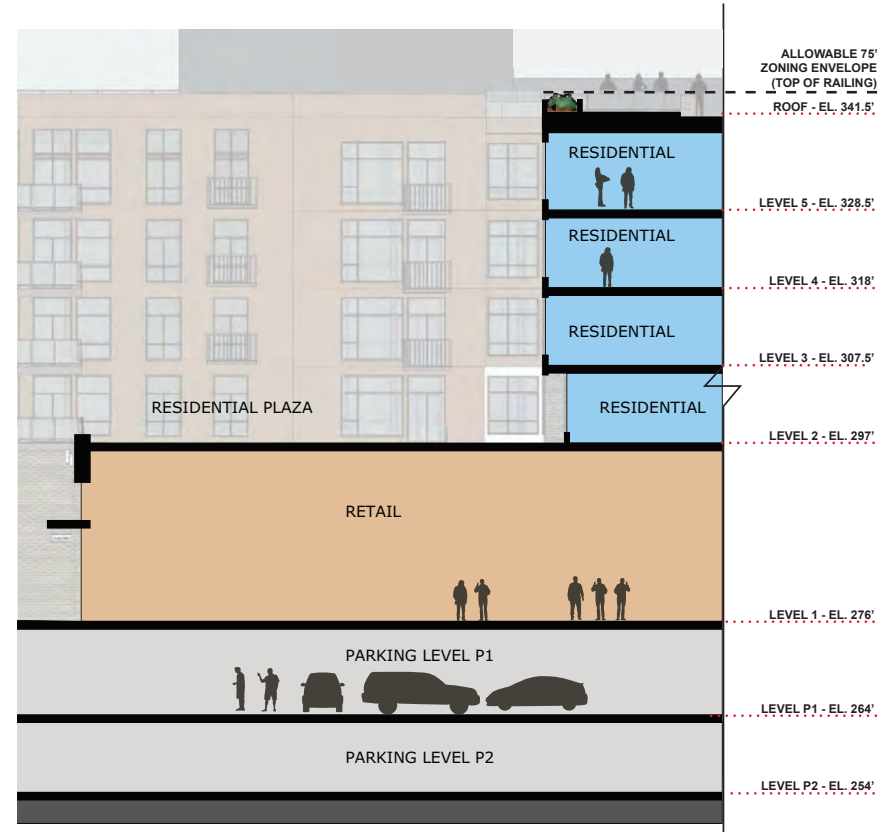
- | | |
|-----------------------------|----------------------------|
| (AC) ARCHITECTURAL CONCRETE | (FP) FLAT PANEL MTL SIDING |
| (AS) ALUMINUM STOREFRONT | (MB) METAL BALCONIES |
| (AW) ALUMINUM WINDOWS | (ML) METAL LOUVERS |
| (BM) BENT METAL | (SC) STEEL CANOPIES |
| (BR) BRICK | (SS) STANDING SEAM |
| (CB) CEMENT BOARD | (VW) VINYL WINDOWS |
| (CM) CORRUGATED METAL | (WS) WOOD SOFFIT |
| (CS) CORTEN STEEL | |

0 4' 8' 16'
SCALE: 1/16"=1'-0" @ 11x17





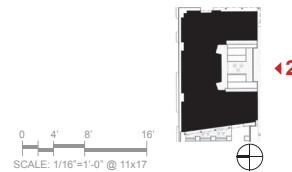
2 BUILDING B - UPPER PLAZA ELEVATIONS



B WALL SECTION

MATERIAL KEY

- | | |
|-----------------------------|----------------------------|
| (AC) ARCHITECTURAL CONCRETE | (FP) FLAT PANEL MTL SIDING |
| (AS) ALUMINUM STOREFRONT | (MB) METAL BALCONIES |
| (AW) ALUMINUM WINDOWS | (ML) METAL LOUVERS |
| (BM) BENT METAL | (SC) STEEL CANOPIES |
| (BR) BRICK | (SS) STANDING SEAM |
| (CB) CEMENT BOARD | (VW) VINYL WINDOWS |
| (CM) CORRUGATED METAL | (WS) WOOD SOFFIT |
| (CS) CORTEN STEEL | |

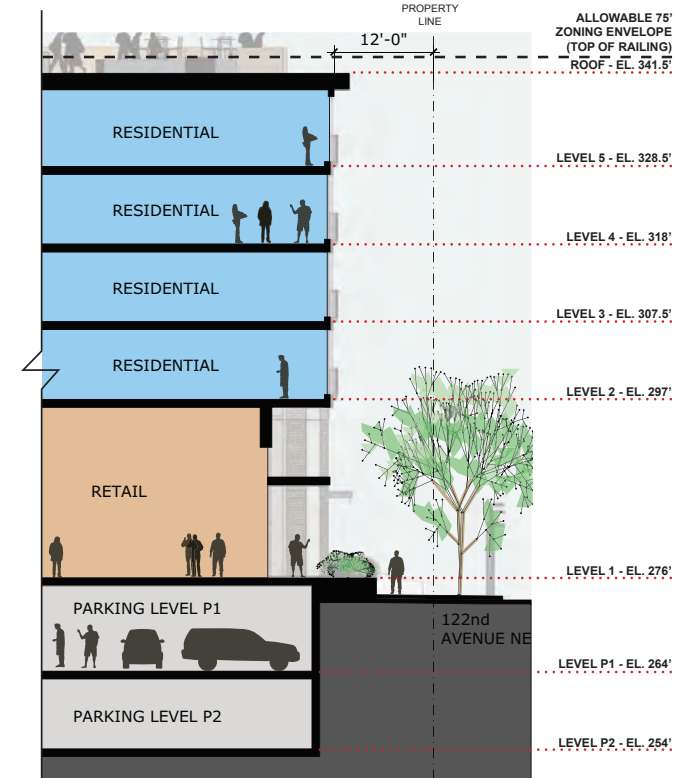




3 BUILDING B - EAST ELEVATION AT 122ND AVE NE



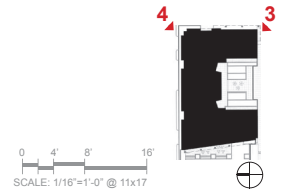
4 BUILDING B - NORTH ELEVATION AT NORTH ACCESS RD



C WALL SECTION

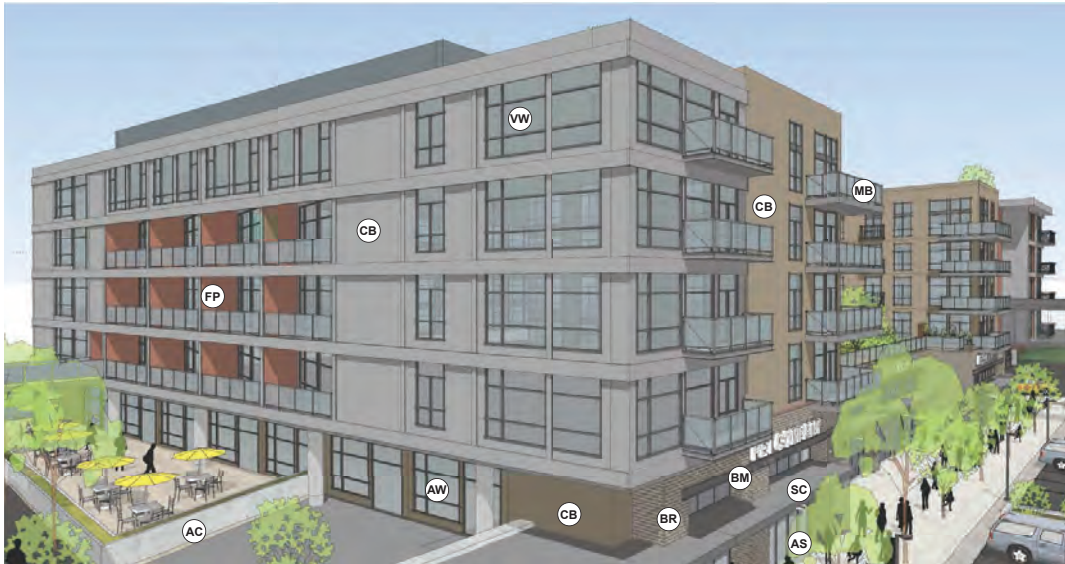
MATERIAL KEY

- | | |
|-----------------------------|----------------------------|
| (AC) ARCHITECTURAL CONCRETE | (FP) FLAT PANEL MTL SIDING |
| (AS) ALUMINUM STOREFRONT | (MB) METAL BALCONIES |
| (AW) ALUMINUM WINDOWS | (ML) METAL LOUVERS |
| (BM) BENT METAL | (SC) STEEL CANOPIES |
| (BR) BRICK | (SS) STANDING SEAM |
| (CB) CEMENT BOARD | (VW) VINYL WINDOWS |
| (CM) CORRUGATED METAL | (WS) WOOD SOFFIT |
| (CS) CORTEN STEEL | |

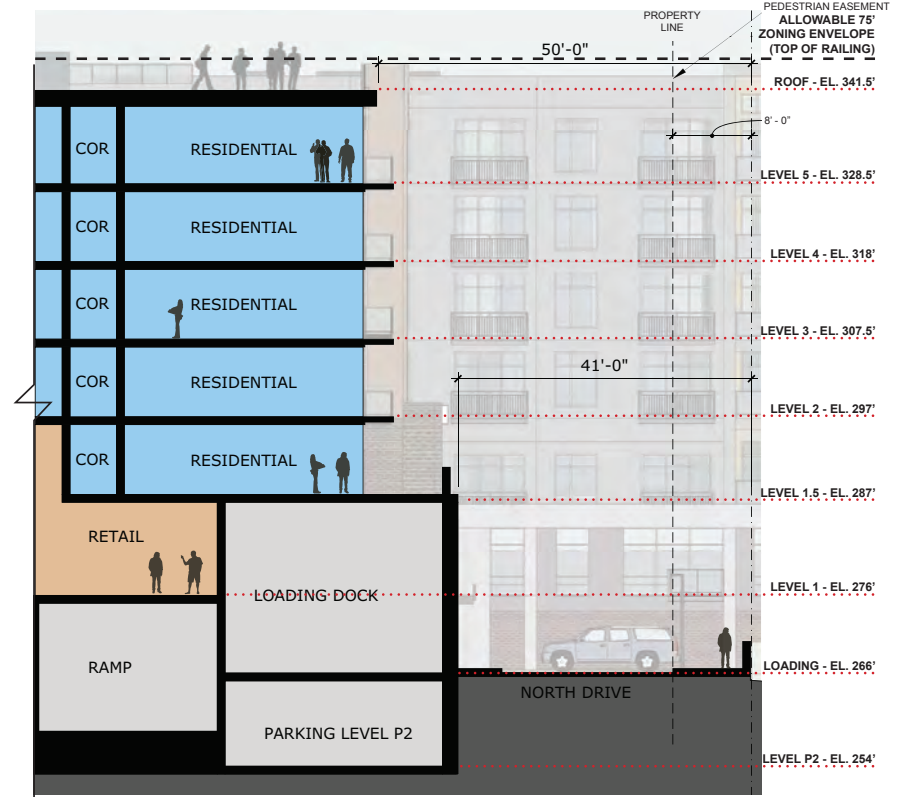




5 BUILDING B - NW ELEVATION AT BRIDGE



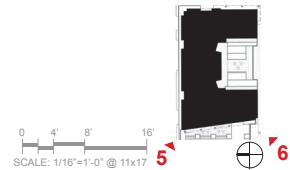
6 BUILDING B - WEST ELEVATION AT UPPER PLAZA



D WALL SECTION

MATERIAL KEY

- | | |
|-----------------------------|----------------------------|
| (AC) ARCHITECTURAL CONCRETE | (FP) FLAT PANEL MTL SIDING |
| (AS) ALUMINUM STOREFRONT | (MB) METAL BALCONIES |
| (AW) ALUMINUM WINDOWS | (ML) METAL LOUVERS |
| (BM) BENT METAL | (SC) STEEL CANOPIES |
| (BR) BRICK | (SS) STANDING SEAM |
| (CB) CEMENT BOARD | (VW) VINYL WINDOWS |
| (CM) CORRUGATED METAL | (WS) WOOD SOFFIT |
| (CS) CORTEN STEEL | |

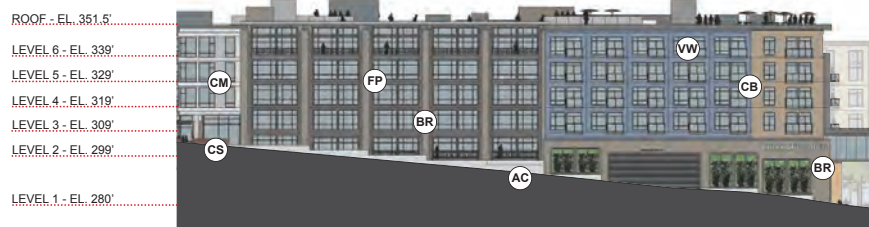




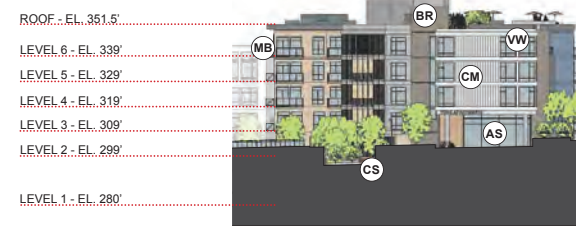
1 WEST ELEVATION



2 NORTH ELEVATION



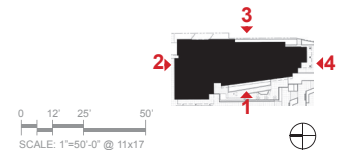
3 EAST ELEVATION



4 SOUTH ELEVATION

MATERIAL KEY

- | | |
|-----------------------------|----------------------------|
| (AC) ARCHITECTURAL CONCRETE | (FP) FLAT PANEL MTL SIDING |
| (AS) ALUMINUM STOREFRONT | (MB) METAL BALCONIES |
| (AW) ALUMINUM WINDOWS | (ML) METAL LOUVERS |
| (BM) BENT METAL | (SC) STEEL CANOPIES |
| (BR) BRICK | (SS) STANDING SEAM |
| (CB) CEMENT BOARD | (VW) VINYL WINDOWS |
| (CM) CORRUGATED METAL | (WS) WOOD SOFFIT |
| (CS) CORTEN STEEL | |

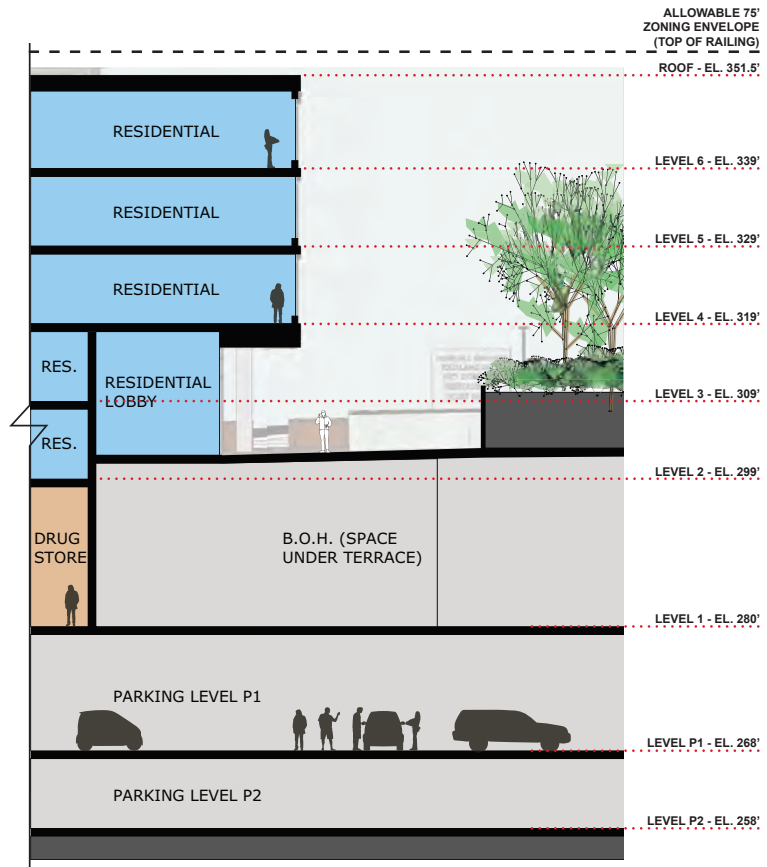




1 BUILDING C - SW ELEVATION AT NORTHEAST 85TH ST



2 BUILDING C - SE ELEVATION AT 122NE AVE NE

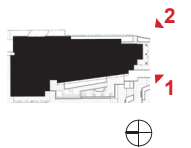


A WALL SECTION

MATERIAL KEY

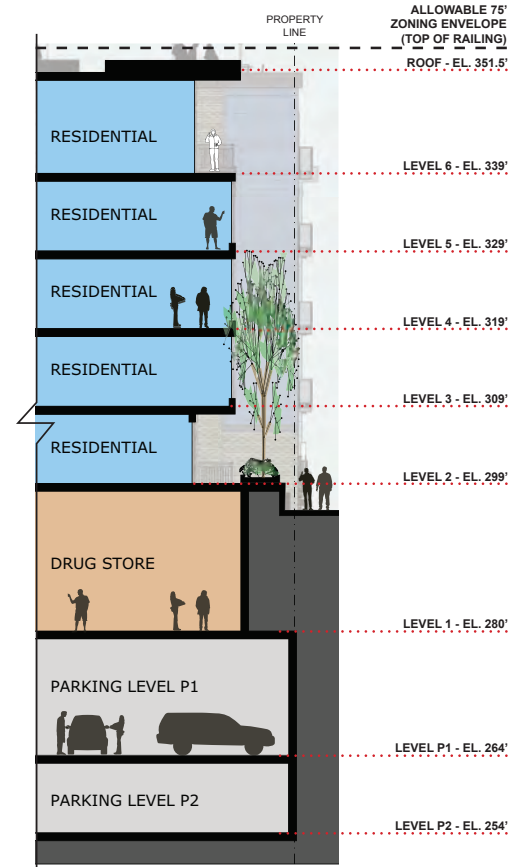
- | | |
|-----------------------------|----------------------------|
| (AC) ARCHITECTURAL CONCRETE | (FP) FLAT PANEL MTL SIDING |
| (AS) ALUMINUM STOREFRONT | (MB) METAL BALCONIES |
| (AW) ALUMINUM WINDOWS | (ML) METAL LOUVERS |
| (BM) BENT METAL | (SC) STEEL CANOPIES |
| (BR) BRICK | (SS) STANDING SEAM |
| (CB) CEMENT BOARD | (VV) VINYL WINDOWS |
| (CM) CORRUGATED METAL | (WS) WOOD SOFFIT |
| (CS) CORTEN STEEL | |

0 4' 8' 16'
SCALE: 1/16"=1'-0" @ 11x17





3 BUILDING C - EAST ELEVATION AT 122ND AVE NE



B WALL SECTION

MATERIAL KEY

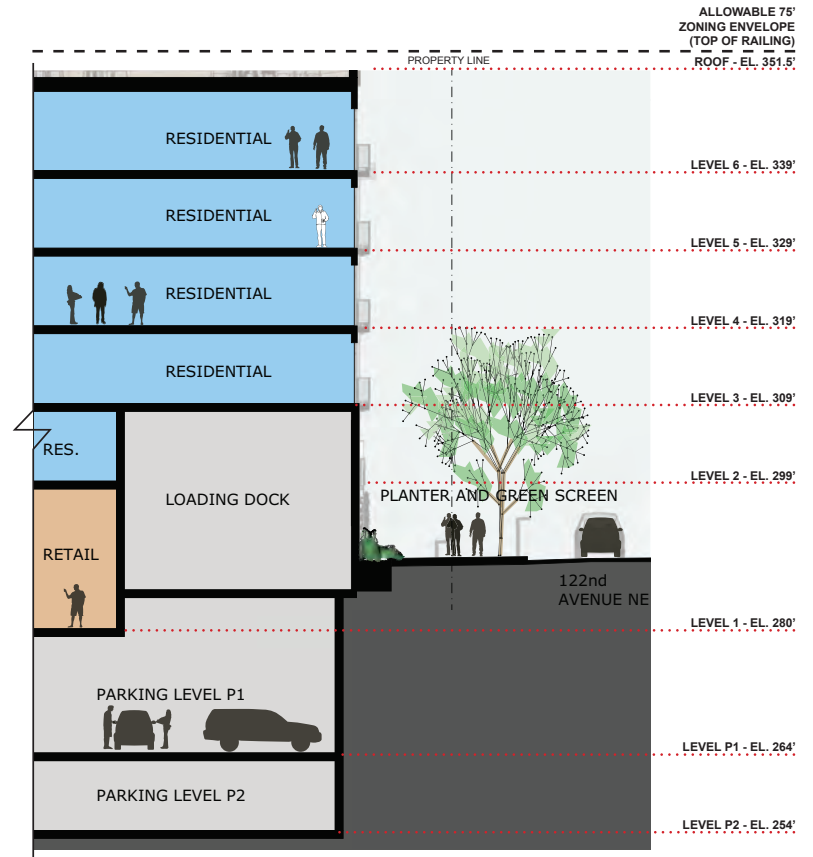
- | | |
|-----------------------------|----------------------------|
| (AC) ARCHITECTURAL CONCRETE | (FP) FLAT PANEL MTL SIDING |
| (AS) ALUMINUM STOREFRONT | (MB) METAL BALCONIES |
| (AW) ALUMINUM WINDOWS | (ML) METAL LOUVERS |
| (BM) BENT METAL | (SC) STEEL CANOPIES |
| (BR) BRICK | (SS) STANDING SEAM |
| (CB) CEMENT BOARD | (VW) VINYL WINDOWS |
| (CM) CORRUGATED METAL | (WS) WOOD SOFFIT |
| (CS) CORTEN STEEL | |

SCALE: 1/16"=1'-0" @ 11x17





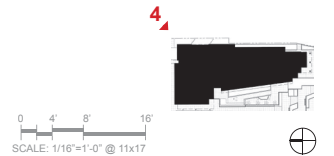
4 BUILDING C - NE ELEVATION AT BRIDGE



C WALL SECTION

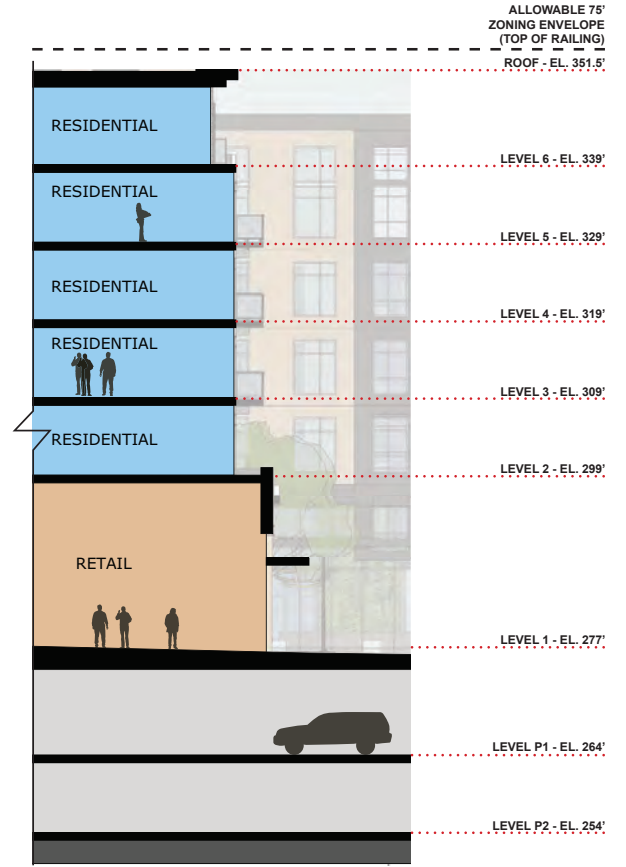
MATERIAL KEY

- | | |
|-----------------------------|----------------------------|
| (AC) ARCHITECTURAL CONCRETE | (FP) FLAT PANEL MTL SIDING |
| (AS) ALUMINUM STOREFRONT | (MB) METAL BALCONIES |
| (AW) ALUMINUM WINDOWS | (ML) METAL LOUVERS |
| (BM) BENT METAL | (SC) STEEL CANOPIES |
| (BR) BRICK | (SS) STANDING SEAM |
| (CB) CEMENT BOARD | (VV) VINYL WINDOWS |
| (CM) CORRUGATED METAL | (WS) WOOD SOFFIT |
| (CS) CORTEN STEEL | |





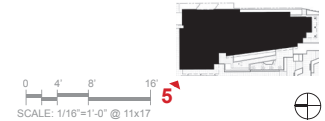
5 BUILDING C - NW ELEVATION AT AUTOCOURT



D WALL SECTION

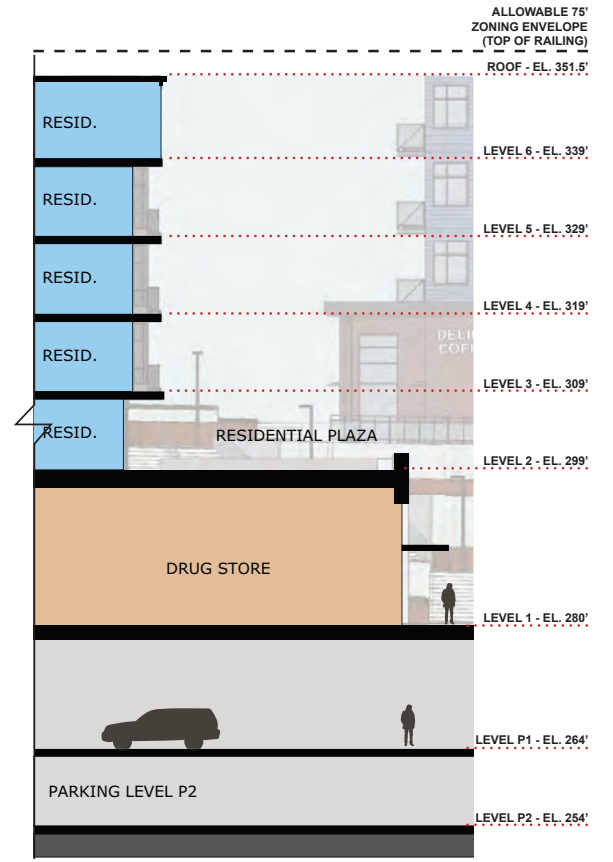
MATERIAL KEY

- | | |
|-----------------------------|----------------------------|
| (AC) ARCHITECTURAL CONCRETE | (FP) FLAT PANEL MTL SIDING |
| (AS) ALUMINUM STOREFRONT | (MB) METAL BALCONIES |
| (AW) ALUMINUM WINDOWS | (ML) METAL LOUVERS |
| (BM) BENT METAL | (SC) STEEL CANOPIES |
| (BR) BRICK | (SS) STANDING SEAM |
| (CB) CEMENT BOARD | (VW) VINYL WINDOWS |
| (CM) CORRUGATED METAL | (WS) WOOD SOFFIT |
| (CS) CORTEN STEEL | |





6 BUILDING C - WEST ELEVATION AT PEDESTRIAN PLAZA

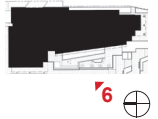


E WALL SECTION

MATERIAL KEY

- | | |
|-----------------------------|----------------------------|
| (AC) ARCHITECTURAL CONCRETE | (FP) FLAT PANEL MTL SIDING |
| (AS) ALUMINUM STOREFRONT | (MB) METAL BALCONIES |
| (AW) ALUMINUM WINDOWS | (ML) METAL LOUVERS |
| (BM) BENT METAL | (SC) STEEL CANOPIES |
| (BR) BRICK | (SS) STANDING SEAM |
| (CB) CEMENT BOARD | (VW) VINYL WINDOWS |
| (CM) CORRUGATED METAL | (WS) WOOD SOFFIT |
| (CS) CORTEN STEEL | |

SCALE: 1/16"=1'-0" @ 11x17





1 WEST ELEVATION

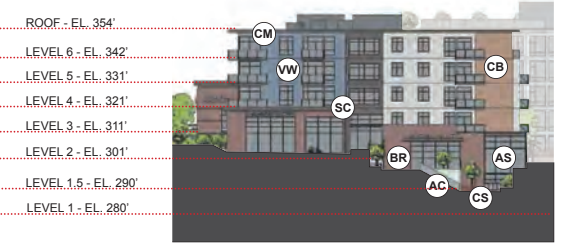
2 NORTH ELEVATION



3 EAST ELEVATION



4 WEST ELEVATION AT COURTYARD



5 EAST ELEVATION AT PLAZA TERRACE



6 SOUTH ELEVATION

MATERIAL KEY

- | | |
|-----------------------------|----------------------------|
| (AC) ARCHITECTURAL CONCRETE | (FP) FLAT PANEL MTL SIDING |
| (AS) ALUMINUM STOREFRONT | (MB) METAL BALCONIES |
| (AW) ALUMINUM WINDOWS | (ML) METAL LOUVERS |
| (BM) BENT METAL | (SC) STEEL CANOPIES |
| (BR) BRICK | (SS) STANDING SEAM |
| (CB) CEMENT BOARD | (VW) VINYL WINDOWS |
| (CM) CORRUGATED METAL | (WS) WOOD SOFFIT |
| (CS) CORTEN STEEL | |

0 12' 25' 50'
SCALE: 1"=50'-0" @ 11x17



BUILDING D - ELEVATIONS | 48

ROSE HILL MIXED-USE | DRC CONSOLIDATED PACKAGE | APRIL 24, 2019

