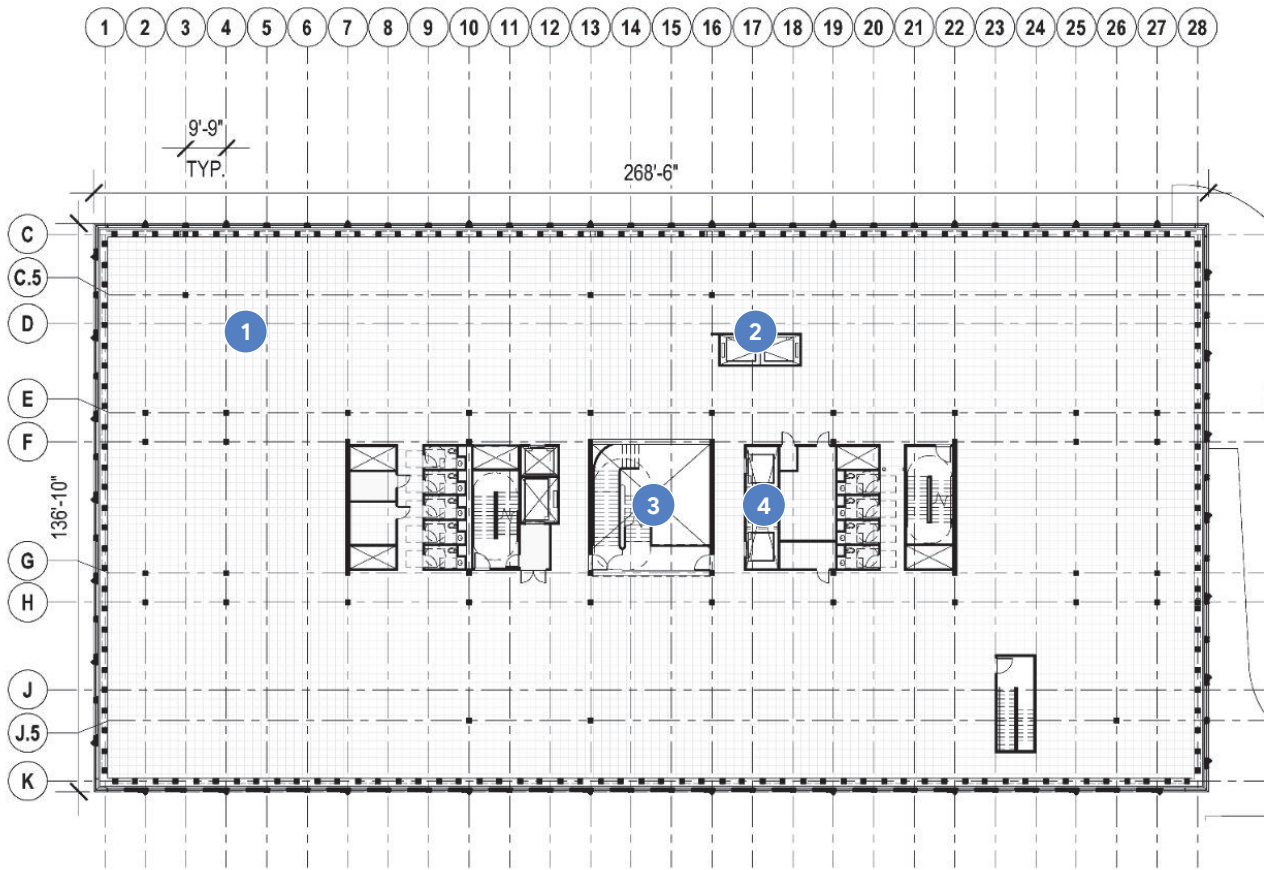


# Floor Plans: Level 2

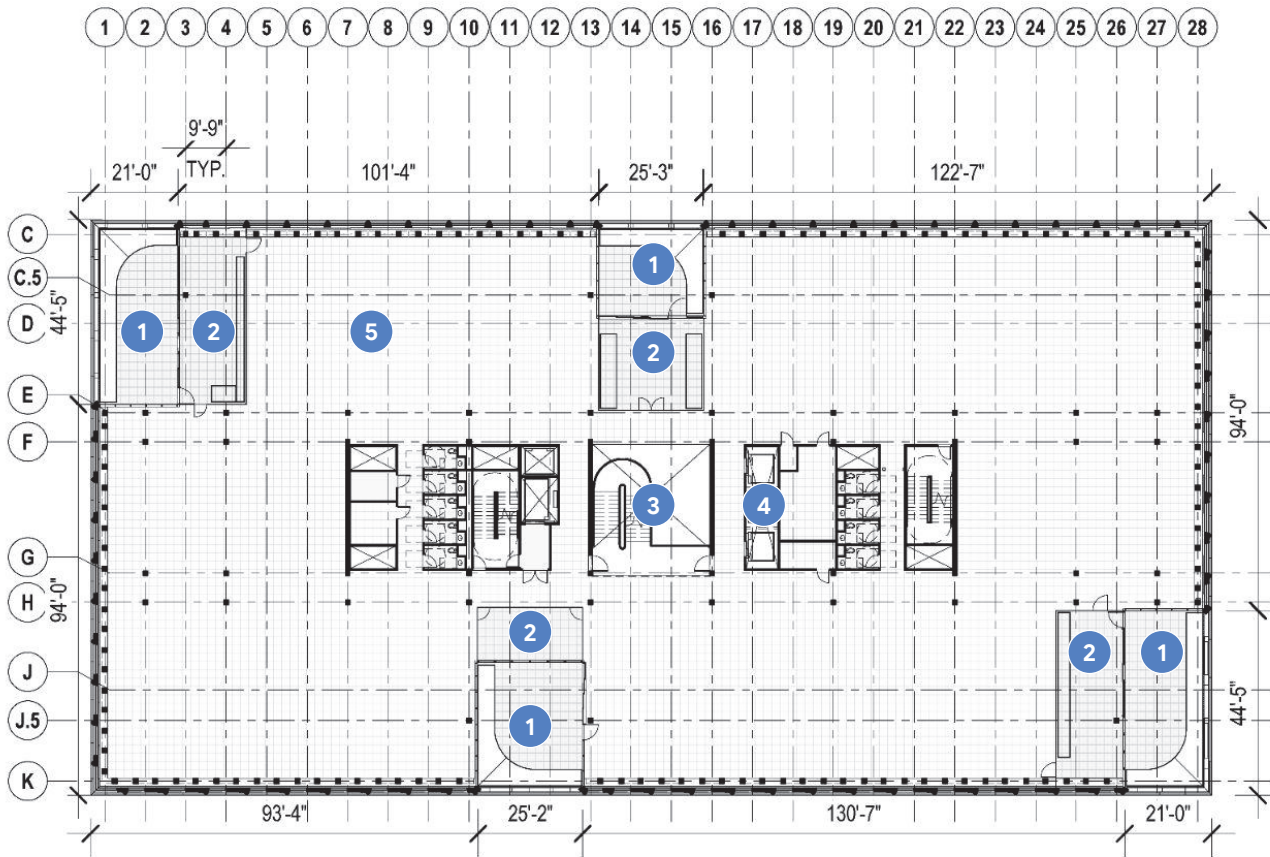


Key Notes:

- 1 Office Space
- 2 Public Stair / Elevators
- 3 Central Stair
- 4 Employee Elevators

**GSF by Use:**  
**Business: 35,761 GSF**

# Floor Plans: Level 3



Key Notes:

- 1 Outdoor Terraces
- 2 "Mid-door" Interior Terraces
- 3 Central Stair
- 4 Employee Elevators
- 5 Office Space

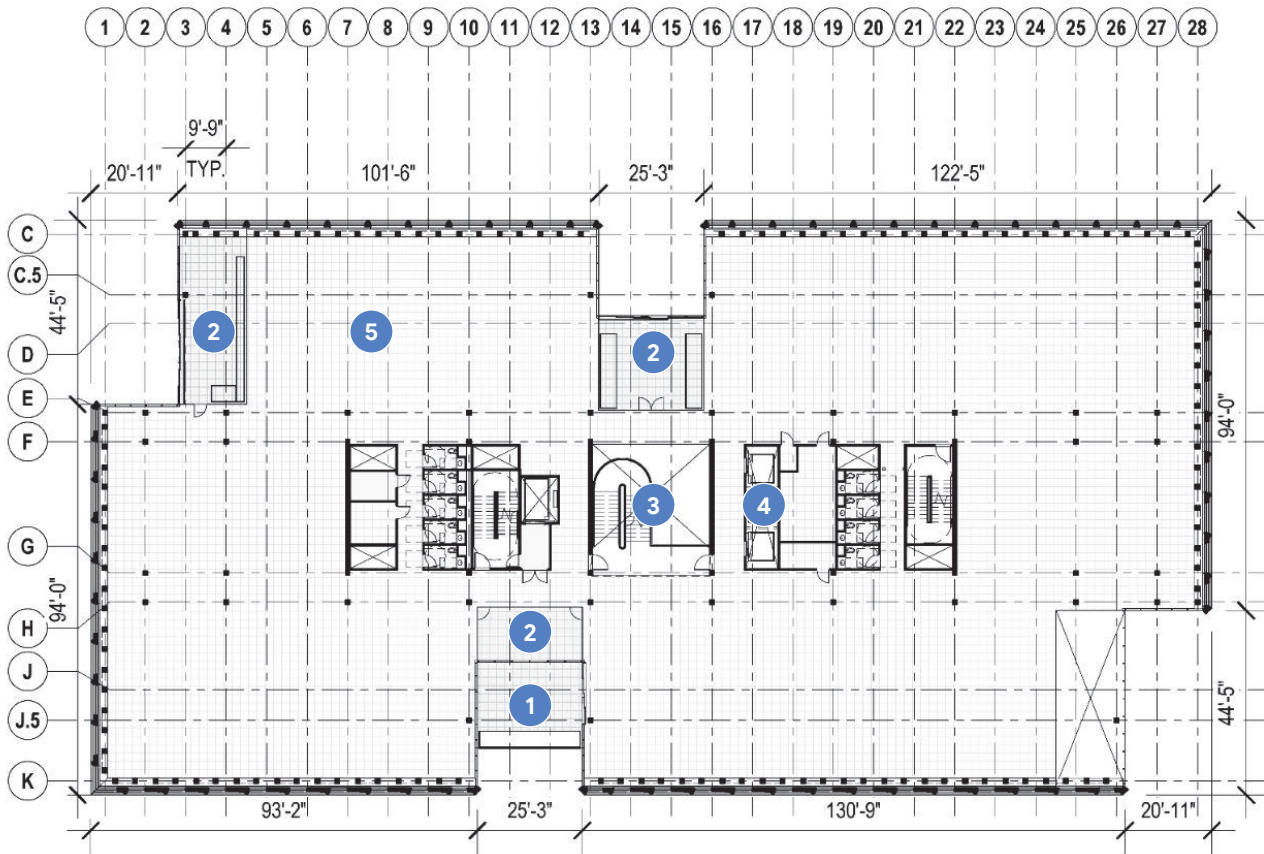
**GSF by Use:**  
**Business: 32,740 GSF**



SCALE: 1" = 30'



# Floor Plans: Level 4

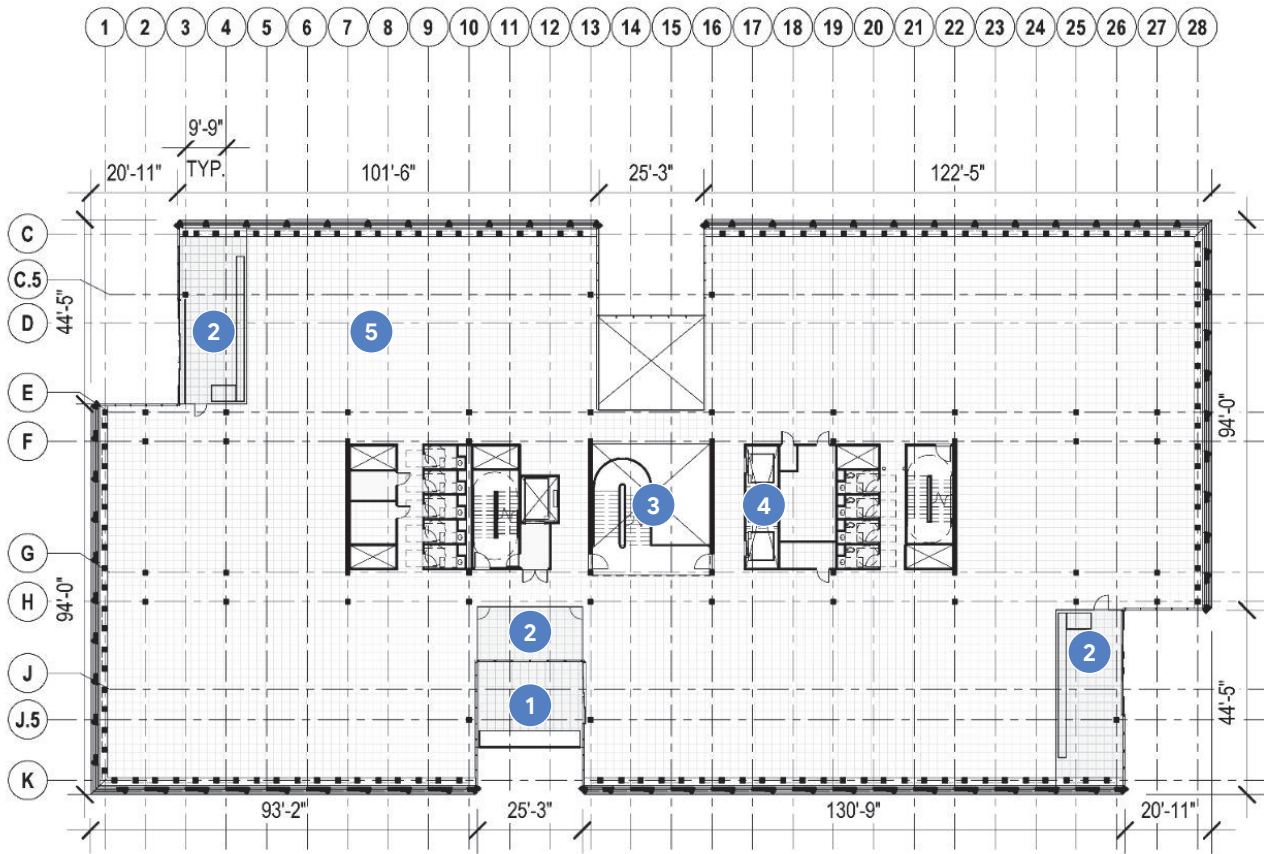


Key Notes:

- 1 Outdoor Terraces
- 2 "Mid-door" Interior Terraces
- 3 Central Stair
- 4 Employee Elevators
- 5 Office Space

**GSF by Use:**  
**Business: 32,076 GSF**

# Floor Plans: Level 5

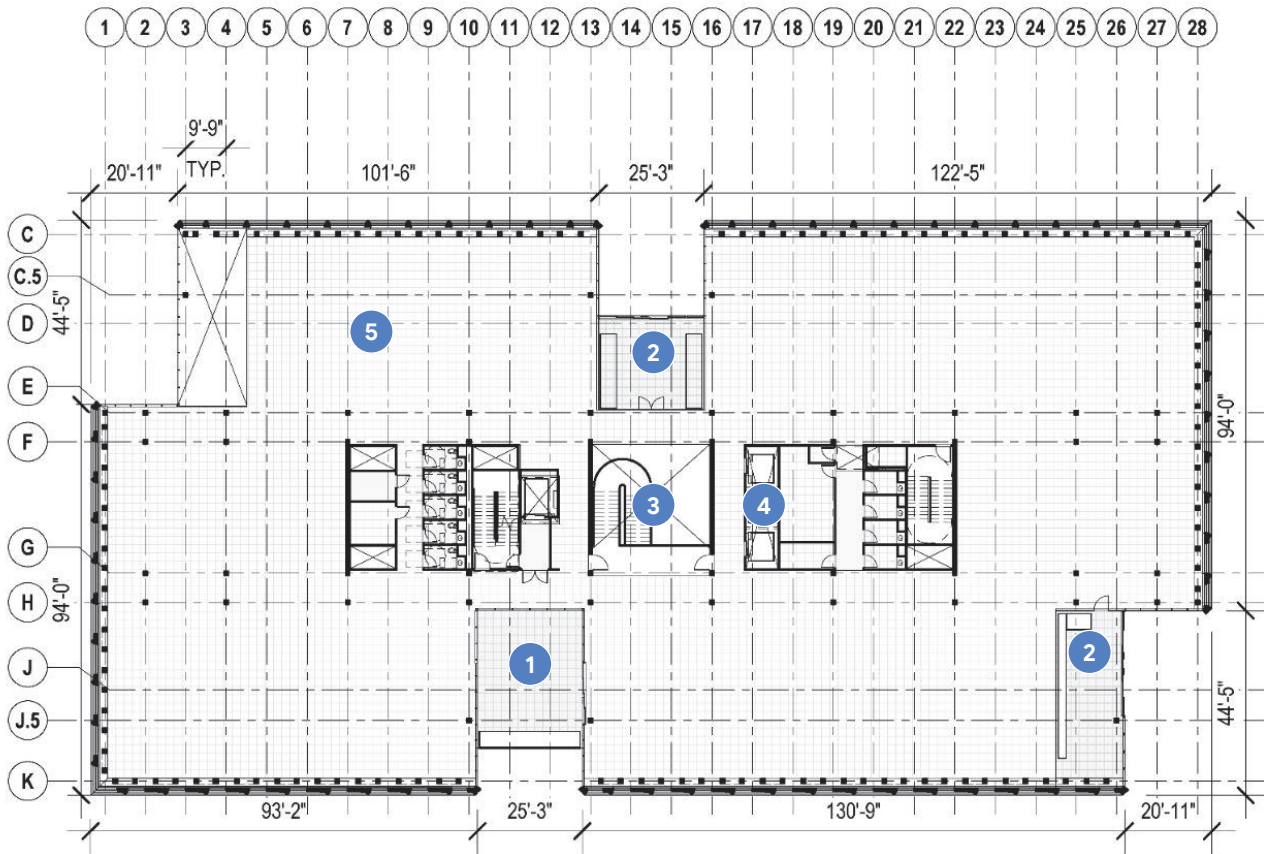


Key Notes:

- 1 Outdoor Terraces
- 2 "Mid-door" Interior Terraces
- 3 Central Stair
- 4 Employee Elevators
- 5 Office Space

**GSF by Use:**  
**Business: 32,213 GSF**

# Floor Plans: Level 6

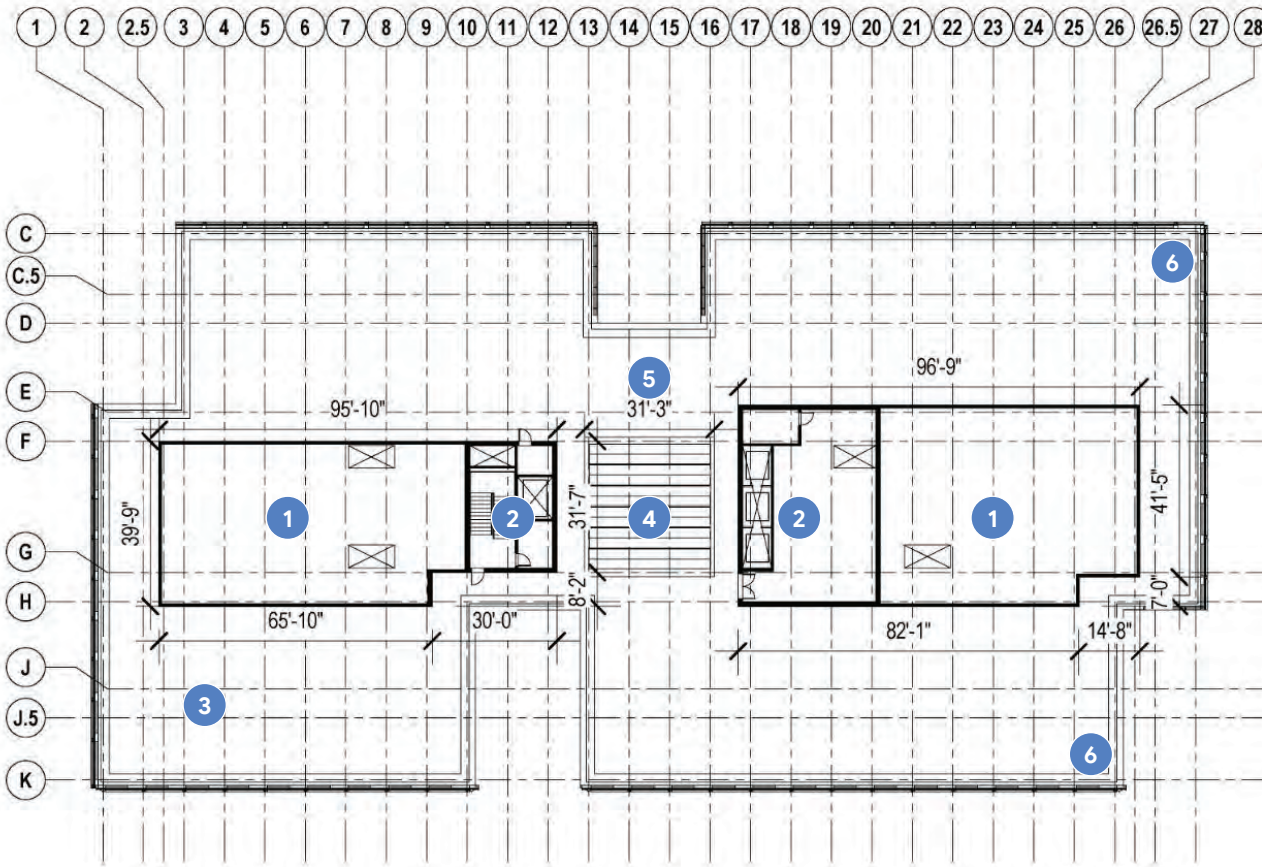


Key Notes:

- 1 Outdoor Terraces
- 2 "Mid-door" Interior Terraces
- 3 Central Stair
- 4 Employee Elevators
- 5 Office Space

**GSF by Use:**  
**Business: 32,068 GSF**

# Floor Plans: Roof



Key Notes:

- 1 Mechanical Screening
- 2 Penthouse
- 3 Location for PV panels
- 4 Skylight
- 5 Green Roof
- 6 Roof Tie-Off

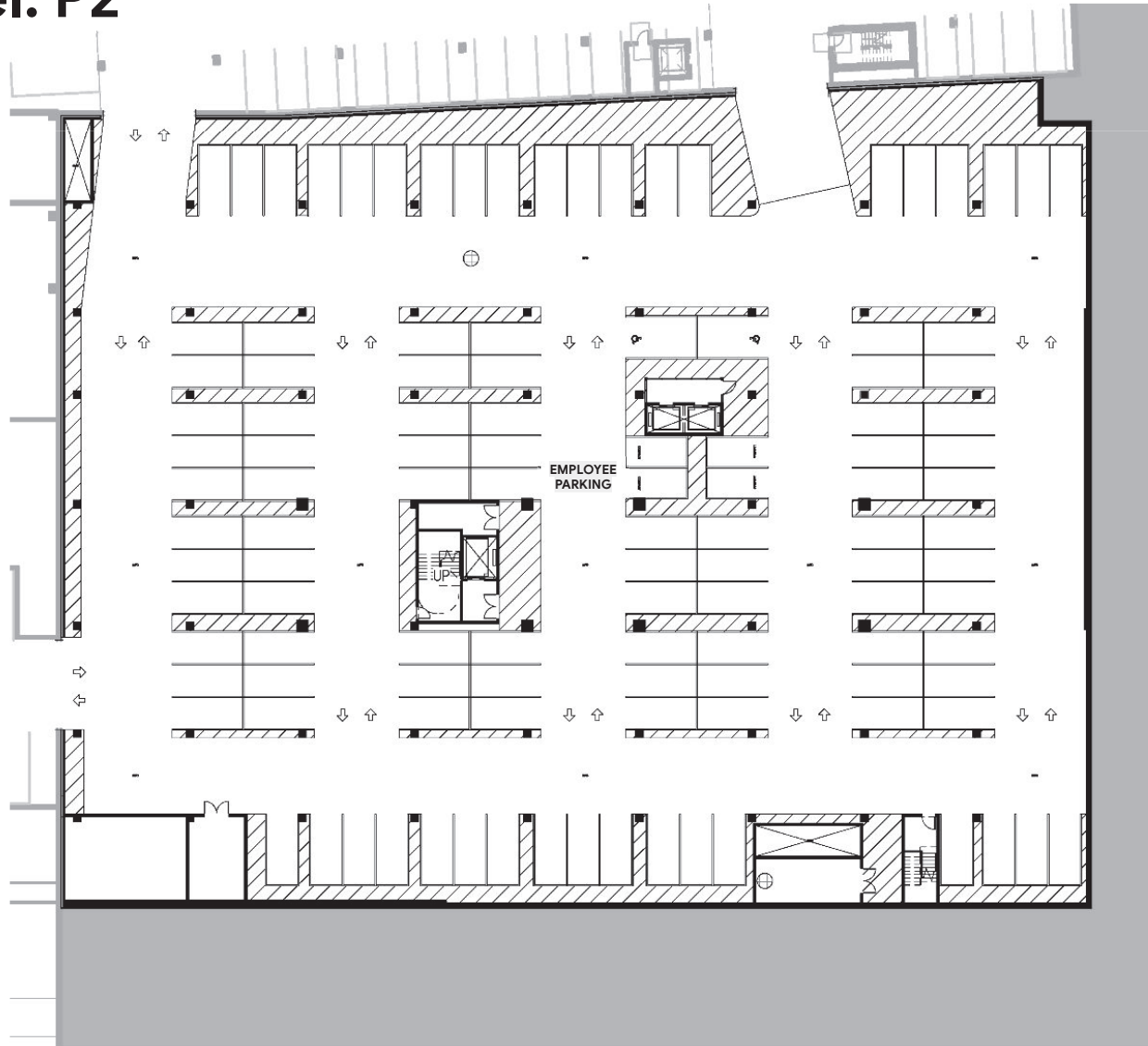


SCALE: 1" = 30'

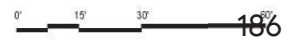


**KU East Parking Plans: 1" = 30'**

# Parking Level: P2

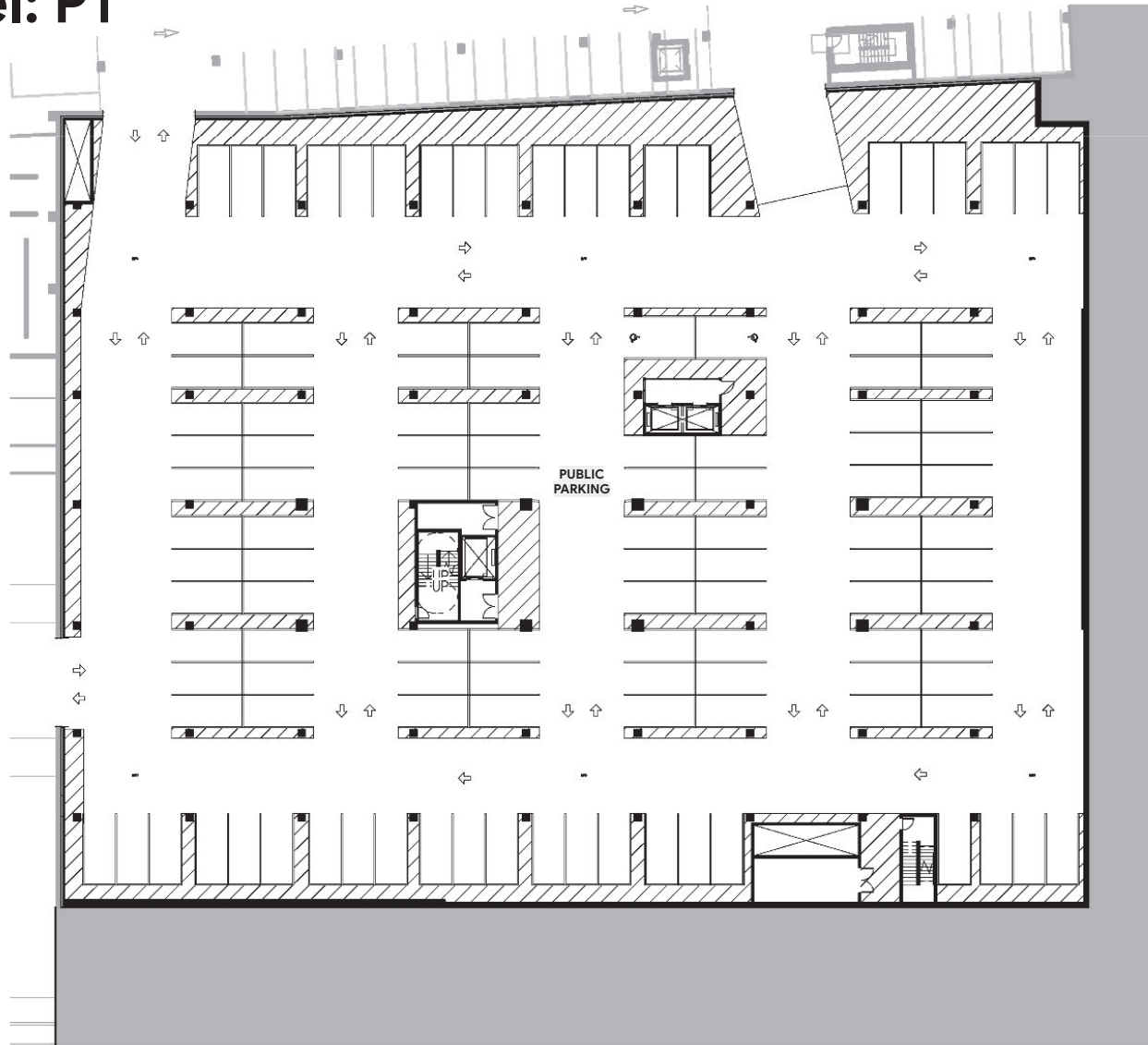


SCALE: 1" = 30'

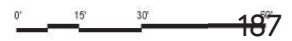




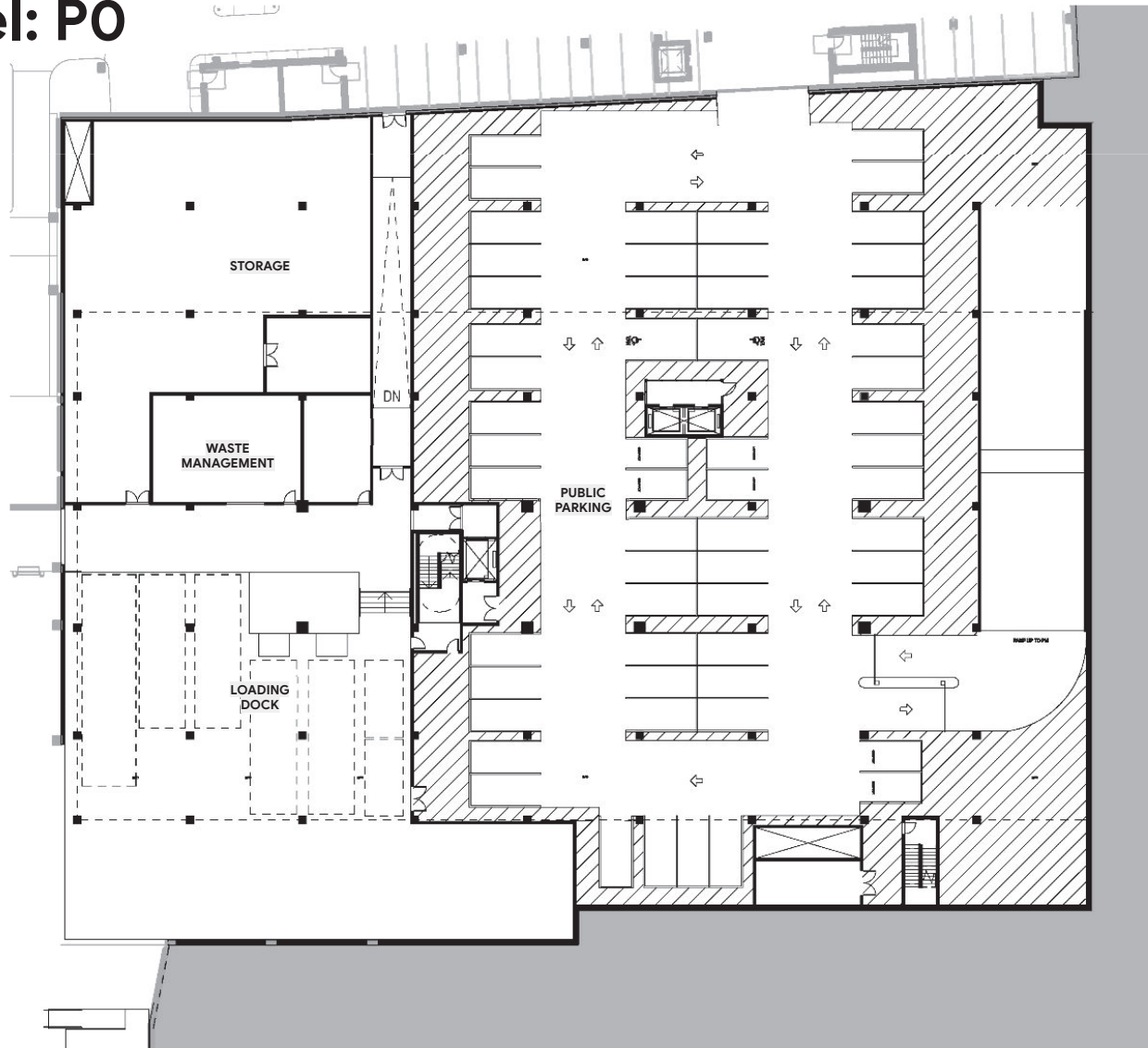
# Parking Level: P1



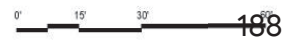
SCALE: 1" = 30'



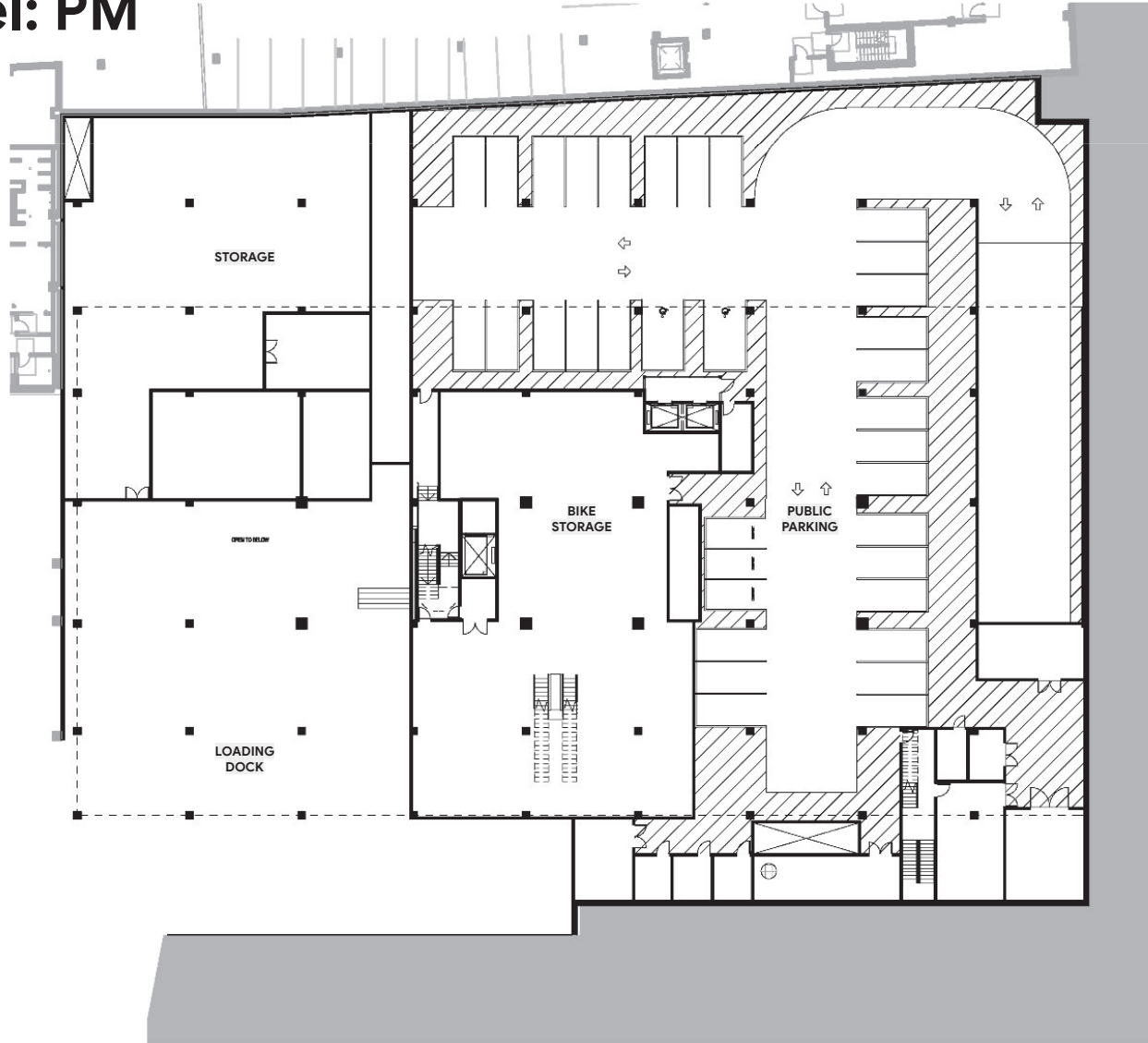
# Parking Level: P0



SCALE: 1" = 30'

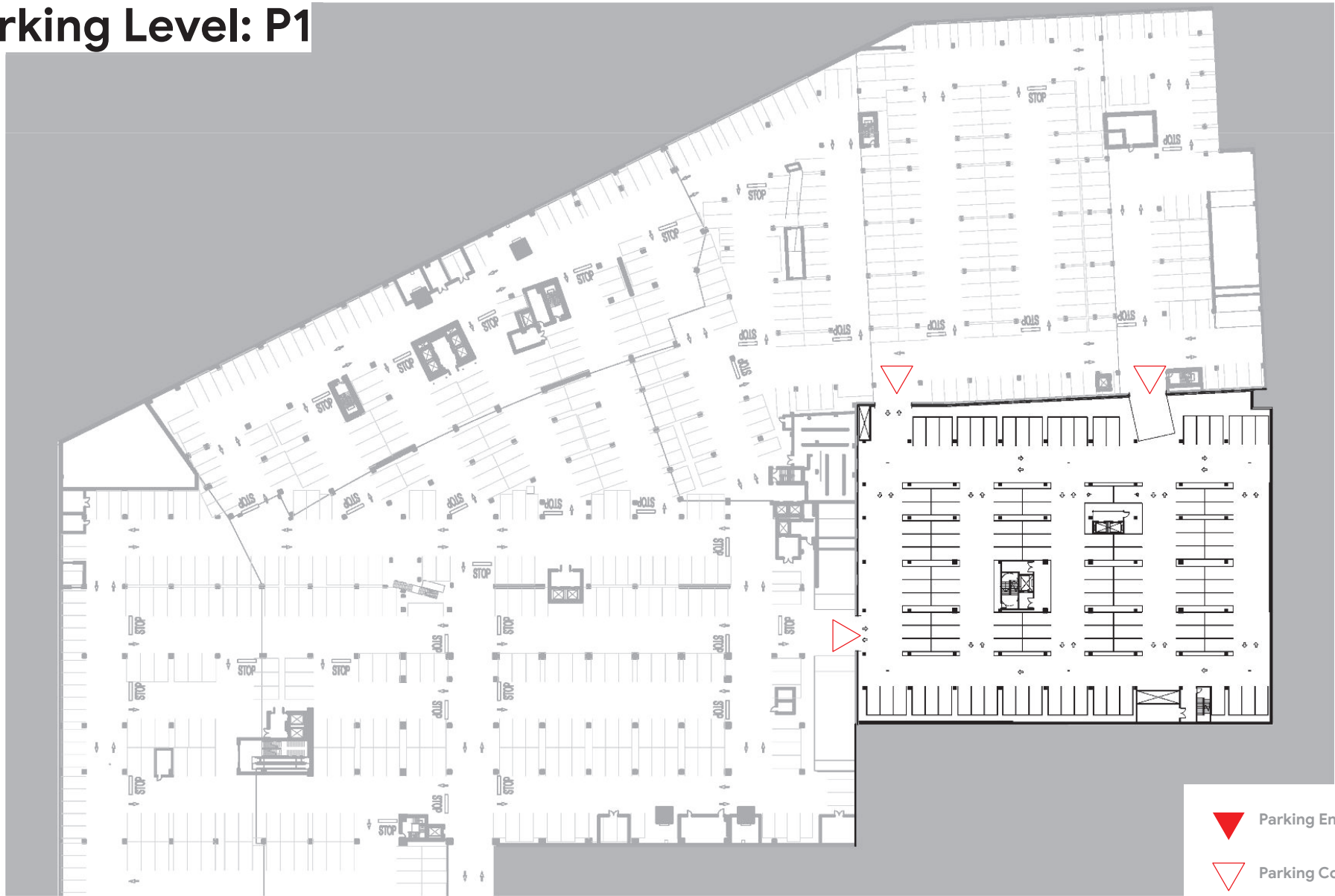


# Parking Level: PM

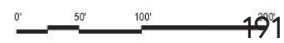


# Campus Parking Plans: 1" = 100'

# Parking Level: P1





SCALE: 1" = 100'



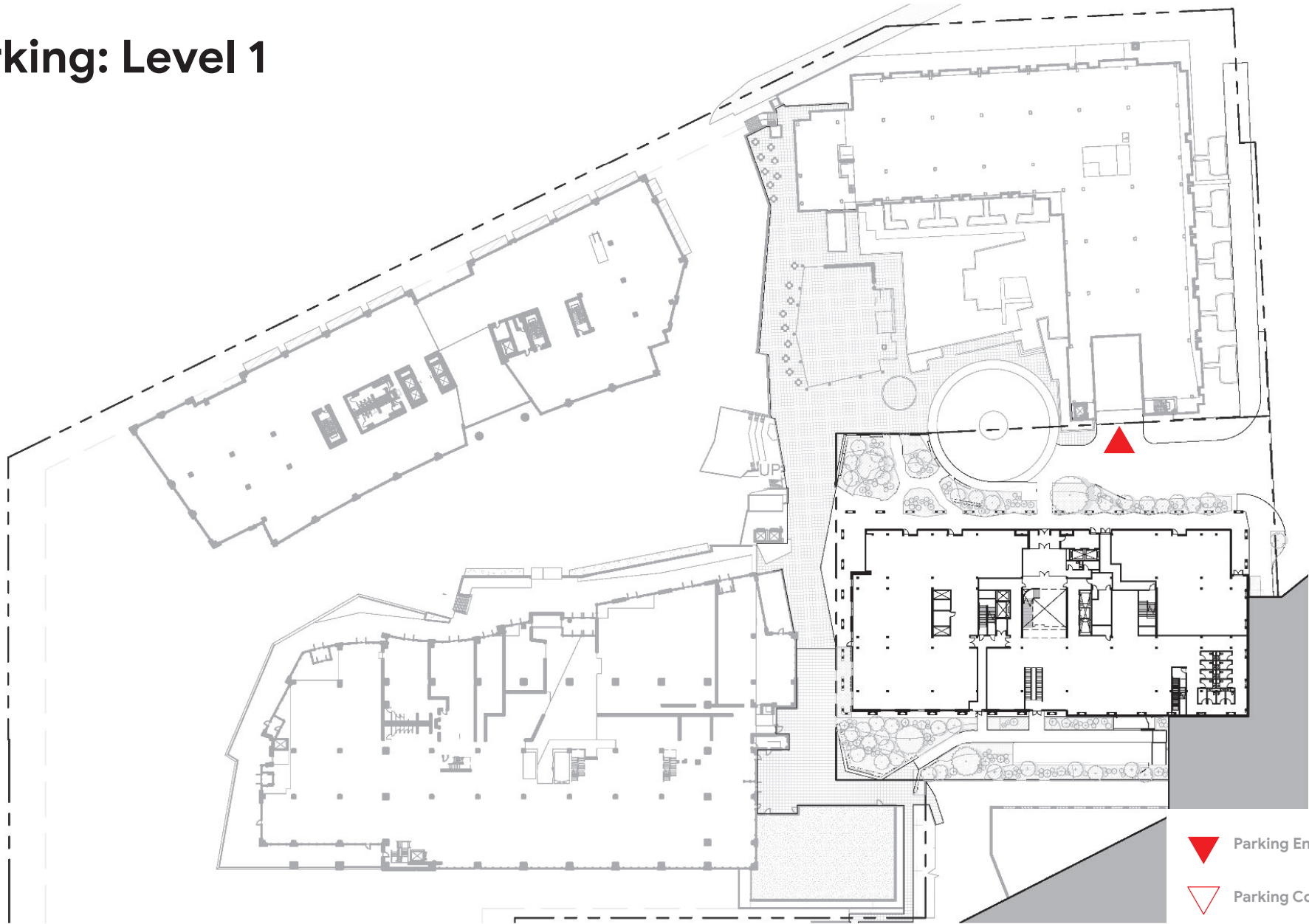
# Parking Level: P0





-  Parking Entrance
-  Parking Connection

SCALE: 1" = 100' 0' 50' 100' 192

# Parking: Level 1



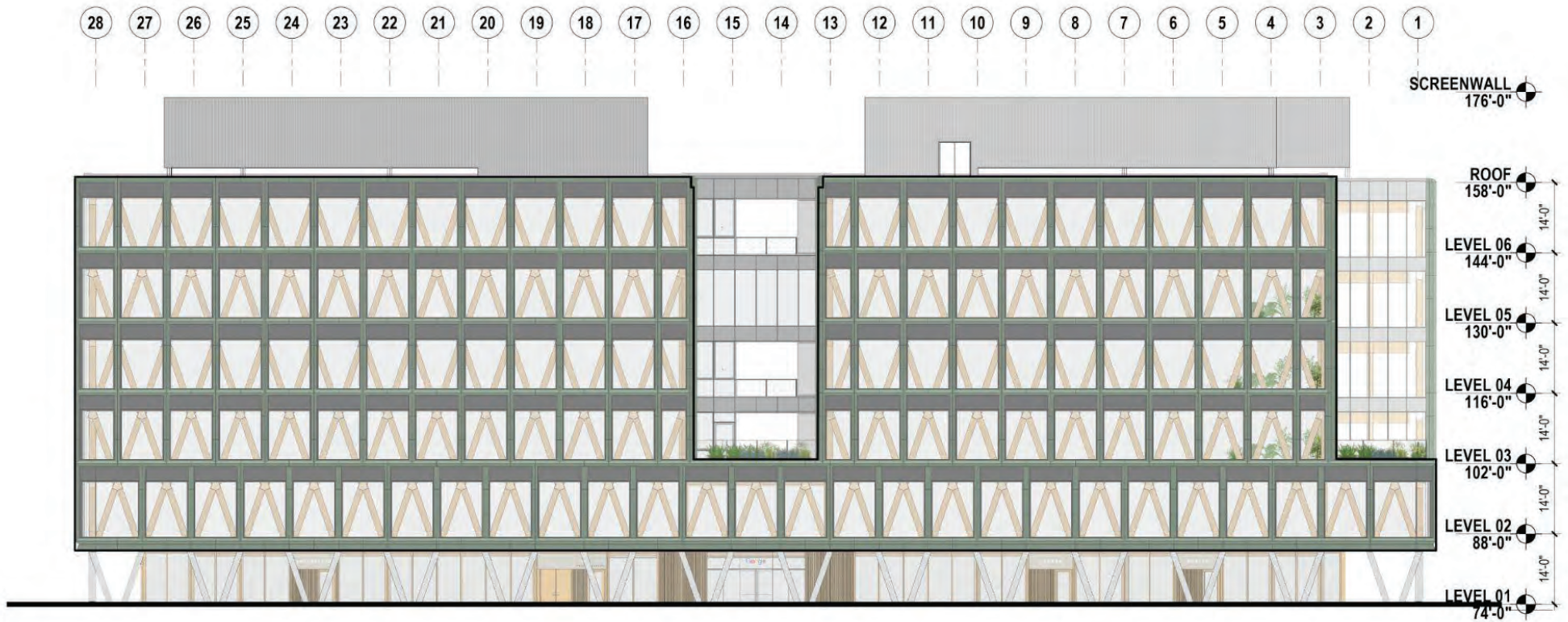
-  Parking Entrance
-  Parking Connection

SCALE: 1" = 100' 0' 50' 100' 193

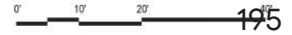
Elevations: 1" = 20'



# Building Elevations: North



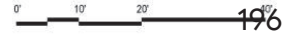
SCALE: 1" = 20'



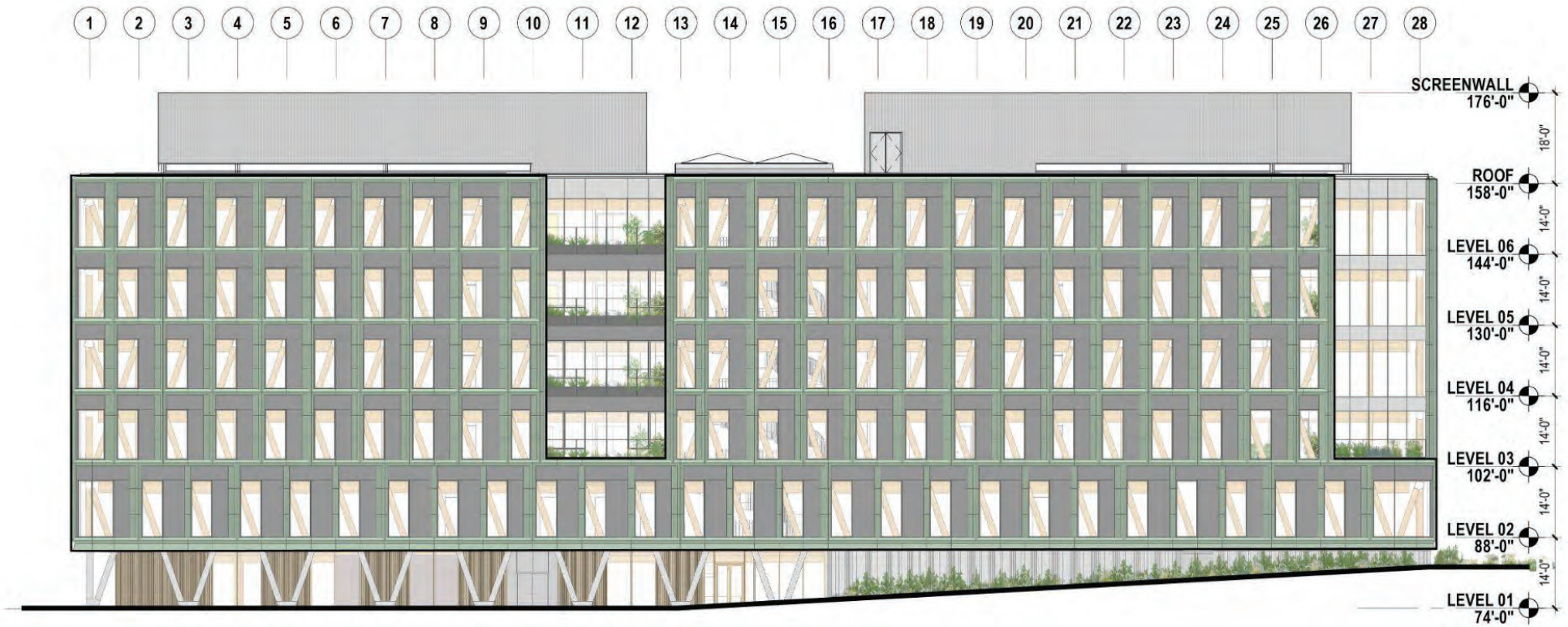
# Building Elevations: West



SCALE: 1" = 20'



# Building Elevations: South



SCALE: 1" = 20'



# Building Elevations: East

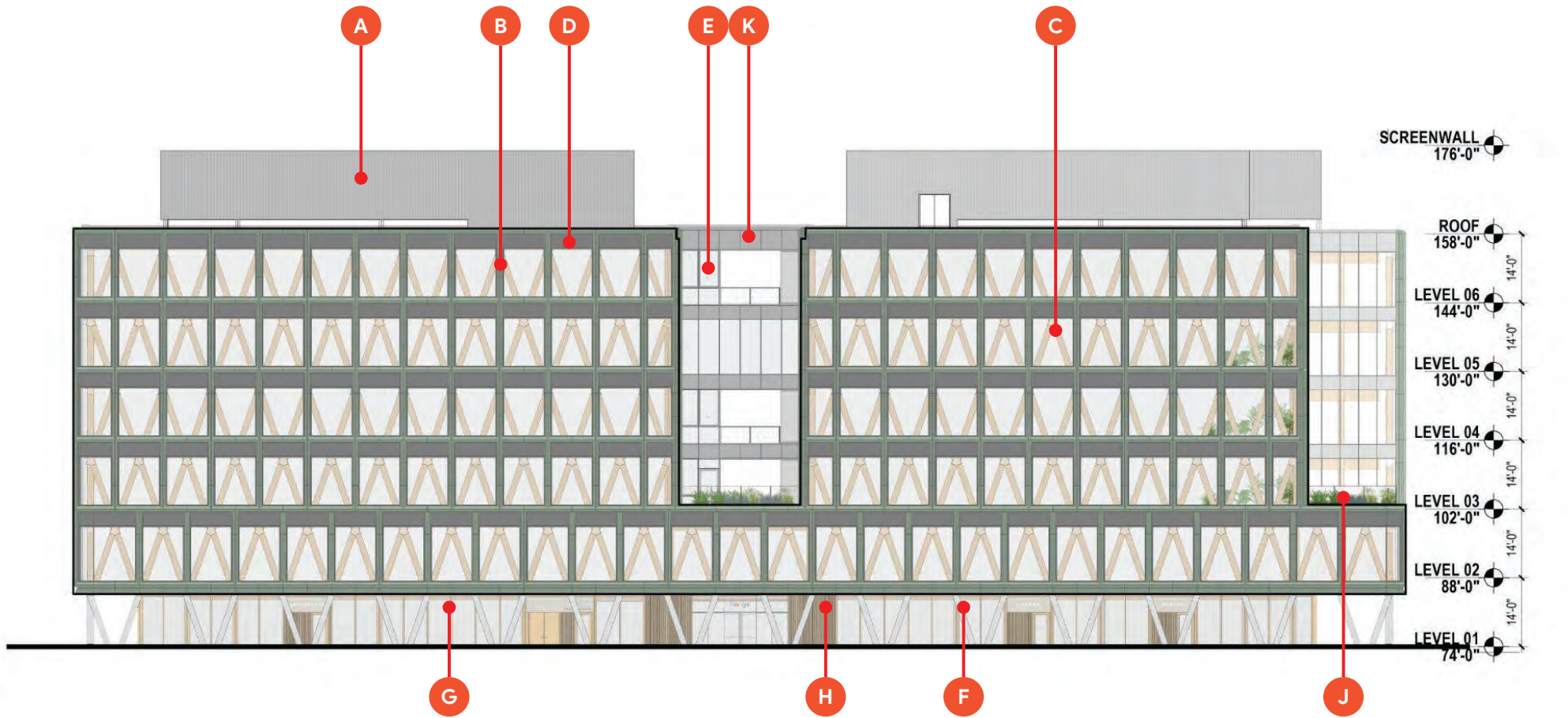


SCALE: 1" = 20'



# Building Elevations: North

- A** Mechanical Enclosure
- B** Terracotta
- C** Timber Diagrid
- D** Metal Panel
- E** Glass
- F** Concrete
- G** Wood Storefront
- H** Textured Siding
- J** Guardrail
- K** Spandrel to match E



SCALE: 1" = 20'