

KIRKLAND PARKS & COMMUNITY SERVICES – JANUARY 2024



Kirkland enjoyed a spectacular year of special events in 2023!



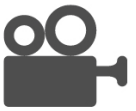
2023 Easter Egg Hunt

Parks were filled day and night with everything from farm fresh produce and free public concerts to festive beer gardens and gnarled witches' brooms. The cycling community was thrilled to welcome back the beloved 7 Hills of Kirkland Bike Ride which was rescued by the Kirkland Kiwanis Club. The long-running annual Kiwanis Easter Egg Hunt at Peter Kirk Park officially joined the ranks of special events. The PNW Witches' Market brought the new Beltane Festival, Mabon Festival and Samhain Celebration to Juanita Beach Park. While Feriton Spur Park came to life during the new Feriton Spur Summer Event Series which ran for three weeks in July and StoryBook Theater took place at Feriton Spur Park in August. And let's not forget the visual impact 2,500 riders in orange jerseys made on their way through Kirkland as part of the annual Obliteride, a summer bike ride hosted by Fred Hutch Cancer Center.



30
Special
Event
permits

3
Commercial
film permits



12
Neighborhood
Block Party
permits

7
National
Night Out
permits



29
Banner permits

Across all event permit types, sixty-one permits were issued in 2023 resulting in one hundred and eighteen days filled with cultural and holiday events, festivals, walks, runs, rides, concerts, live theater, neighborhood block parties, free speech activities and more. Altogether, these events drew more than 100,000 attendees. Here are the overall special event numbers for 2023:

- 112 applications received across all permit types.
- 90 permits issued across all permit types.

Kirkland is fortunate to host events that are imagined, created, and produced by such talented, dedicated, and hardworking teams. We were reminded of this several times over last year as thousands of local and neighboring community members chose to spend their free time in Kirkland enjoying all the fun there was to be had. Events draw people of different cultures, backgrounds, generations, and interests together for a moment in time which allows for shared experiences and new connections. The memories we create with family and friends, both old and new, are what makes events so "special". We look forward to celebrating new moments and creating cherished memories with you in 2024!



Festival Food



Juanita Friday Market



Race Participants

ADMINISTRATION

FIRST AED IN A KIRKLAND PARK

Kirkland's first outdoor automated external defibrillator (AED) unit in a park has been installed at 132nd Square Park. AEDs are portable devices that can be used to restart a heart in case of a sudden cardiac arrest. The Parks and Community Services department selected a monitored cabinet for the AED from SaveStation. The AED is mounted in a heated and weatherproof cabinet on the storage building next to 132nd Square Park's multi-purpose synthetic turf field. The AED is simple to use, prompting the user with step-by-step verbal instructions and delivering a shock only if needed.



HOUGHTON PARK AND RIDE ACTIVATION

The Houghton Park and Ride (HPR) site was purchased by the City of Kirkland as a potential location for a recreation and aquatics center. With Kirkland Proposition 1 not passing, the City will not be able to construct a facility for the foreseeable future. Rather than allow the site to remain vacant, staff developed and presented to City Council several preliminary concepts of how the site can be activated to serve the community and the City. Concepts include pickleball courts, a skate park, a pump track, using the site for new/additional recreation programs, hosting Fire Department trainings, and storage/lay-down space for various construction projects. Based on direction from City Council, staff will refine and bring costing information to City Council in March.

POST-PROPOSITION 1 EVALUATION

Following the rejection of Kirkland Proposition 1 in November of 2023, staff are working with EMC Research to prepare a statistically valid community survey to learn why Proposition 1 did not pass and understand what the community's priorities are for the future. Staff also met with the Parks Funding Exploratory Committee, Kirkland Youth Council and Park Board to gather their feedback regarding Proposition 1 and review future options.

HUMAN SERVICES

SEVERE COLD WEATHER RESPONSE

During inclement weather when temperatures drop within freezing range, the City activates resources to ensure the safety of unhoused residents. From January 10 through January 16 emergency hotel vouchers were activated and distributed by City staff including the Homeless Outreach Coordinator, Kirkland Police Department, Kirkland's Fire/Mobile Integrated Health (MIH) Team and the Regional Crisis Response Agency (RCR). During the activation period, 8 emergency hotel vouchers were distributed bringing in 6 adults and 2 children out of the cold. In addition to the emergency vouchers being activated, the Peter Kirk Community Center and North Kirkland Community Center served as warming centers during business hours 8:00am-5:00pm.

COORDINATED RESPONSE TO HOMELESSNESS SYMPOSIUM

Human Services staff participated in a symposium in January to inform community-facing staff from various departments, including members of City Council, on the role of the Homelessness Assistance Response Team (HART). The symposium included reviewing each HART member's role and function within the team, providing instruction on how to activate HART, and practicing within groups while working through scenarios. Learn more about the City's response to homelessness at WWW.KIRKLANDWA.GOV/HOMELESSNESS.

METRO BUS TICKET ALLOTMENT FOR 2024

The Metropolitan King County Council created the Human Services Bus Ticket Program (HSBTP) in 1993 to provide transportation for low-income and people experiencing homelessness. In November 2023, the Human Services Division applied to the HSBTP and was awarded the full amount requested of \$2,750 worth of bus ticket allotment. Awarded agencies pay 10 percent of the value of the tickets, with King County Metro covering the remaining 90 percent of the ticket value. The City's awarded allotment is equal to 1,000 adult fare bus tickets that will be made available to qualifying community members through various points of access that include the City's Homeless Assistance and Response Team, partner organizations, and the 2024 Kirkland Health and Wellness Fair.

HOMELESS OUTREACH PROGRAM HIGHLIGHT

Kirkland's Homeless Outreach Coordinator was able to work with community partner 4 Tomorrow to help a client find housing with her Section 8 voucher. A client named Marie had been living at Motel 6 for over two months and been unsuccessful in finding a sustainable housing option. City staff partnered with 4 Tomorrow to apply for and secure housing. Once approved, 4 Tomorrow was able to pay Marie's move-in fees through the City funded rent assistance program. Marie successfully moved into her new apartment located in the Totem Lake area in January.

PARK OPERATIONS & MANAGEMENT

STARTING THE NEW YEAR WITH EXCITING PROGRESS

January was full of exciting leaps forward at several sites alongside our regular winter maintenance. Here are monthly highlights from our four crews:

BALLFIELDS/CEMETERY

- Mulched tree rings at 132nd Square, Crestwoods, and Everest parks.
- Enhanced many areas of turf at Everest Park.
- Raked flower beds and cleared debris from fence lines at the Cemetery.
- Removed ice and spread ice melt at park sites, fire stations, and City Hall.
- Completed full burials and internments at the Cemetery.
- Repaired turf and potholes at Ben Franklin Elementary.
- Decommissioned unauthorized bike jumps built on Crestwoods trails.

HORTICULTURE

- Weeded and edged flower beds at Brink, Houghton, and Heritage parks.
- Mulched tree rings at Tot Lot, Reservoir, and Marsh parks.
- Pruned shrubs and trees at Heritage, Brink, Marsh, and Marina parks.
- Cleaned goose poop from pathways at Brink and Waverly parks.
- Removed ivy and blackberry from fences and property lines at Rose Hill Meadows and Reservoir parks.
- Pruned back overhanging willows along the western boardwalk at Juanita Bay Park.
- Installed culvert under the gator trail at OO Denny Park.
- Removed large, big-leaf maple stump at Fisk Family Park.

JANUARY TOP 10 TASKS



Work at Fisk Family Park

NATURAL AREAS/GREEN KIRKLAND PARTNERSHIP

- Partnered with Watterson Excavation and other Parks Management teams to remove the decommissioned pump house from the east end of Juanita Bay Park.
- Removed several downed trees across trails at Watershed Park.
- Cleaned all the signage at North Rose Hill Woodlands, Juanita Bay, and South Rose Hill parks.
- Removed dead holly and laurel from Juanita Open Space #3.
- Supported seven volunteer restoration events at multiple sites with tools and materials.
- Removed a fallen tree across the boardwalk at Juanita Bay Park.
- Installed new fencing at the Juanita Beach dog park.
- Removed ice and spread ice melt at park sites, fire stations, and City Hall.



Work at Juanita Bay Park

SUPPORT

- Installed locks on dog poop bag dispensers at Snyder's Corner.
- Re-attached fiber optic cable to buildings at McAuliffe Park.
- Repaired faucets and lines damaged by freezing weather at Marsh and Marina parks.
- Removed the raised asphalt on the north end of the causeway at Juanita Bay and replaced with gravel.
- Installed AED on the side of the maintenance building at 132nd Square Park.
- Repaired and refinished benches at the Peter Kirk Pool.
- Replaced urinal flush kit, rebuilt flush valves, and adjusted water flow at Marina Park.
- Replaced all six sinks and faucets at Marina Park.

UPCOMING EVENTS

- The new Parks Beautification Program is hosting two volunteer events in February:
 - Juanita Beach on February 14
 - OO Denny on February 17
- The Green Kirkland Partnership is hosting four events in February:
 - Juanita Bay Park East on February 2
 - Rose Hill Meadows on February 11
 - Juanita Bay Park East on February 16
 - Juanita Open Space #1 on February 17
- More information can be found at WWW.KIRKLANDWA.GOV/WHATS-HAPPENING/COMMUNITY-EVENTS. We hope to see you there!

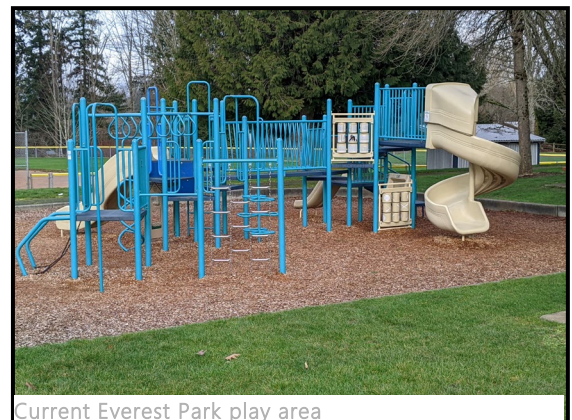
PARK PLANNING & DEVELOPMENT

Below is a high-level summary and status update of the active Park Planning and Development projects. Please visit the Park Planning and Development [WEBSITE](#) to learn more about these projects.

EVEREST PARK PLAY AREA AND ADA ENHANCEMENTS

Everest Park playground has been identified as the next playground to be replaced for the benefit of the community. Staff plans to release a Request for Proposal for professional services in Spring 2024 to design the playground and connect accessible pathways.

Background of the Project: This ongoing capital project strives to replace aging playgrounds, improve sports courts, and make ADA improvements in the parks throughout the system.



Current Everest Park play area

HOUGHTON AND EVEREST RESTROOM REPLACEMENT

The restroom building at Houghton Park is planned for replacement. During the scoping process, staff identified opportunities to analyze the building's current location and potential for programmatic improvements. Staff has contracted with a consultant to develop preliminary 10% design options and costing for further consideration.

The restroom building at Everest Park is planned for design in 2024 and construction in 2025 due to its age and condition. Staff has contracted with a consultant to develop design and construction drawings.

Background of the Project: This capital project repairs or replaces park restrooms in the system. Restrooms at Houghton and Everest Restrooms have been identified for replacement due to their age and condition.

MARINA PARK SHORELINE RENOVATIONS

The project has been refined to focus on repairs to the south fingers and pier along with a few upland repairs and improvements. Staff is now working with the consultant to develop the next contract for the next phase of design work.

Background of the Project: Shoreline structures at Marina Park were evaluated and identified for repairs in the 2019 Kirkland Shoreline Structures Assessment Report. In late 2022, a portion of the sidewalk and stairs at Marina Park experienced significant subsidence.

O.O. DENNY PARK PICNIC SHELTER

A new additional picnic shelter is in planning and design. This design currently mimics the existing shelter and will add capacity for the community. The project is currently in permitting.

Background of the Project: Addition of a picnic shelter using funds transferred from the Finn Hill Park District.

RECREATION SERVICES

ANTI-FRAUD FAIR AT PKCC

The Kirkland Senior Council invited Consumer Protection Washington, a group of organizations and government agencies dedicated to educating and alerting the public on consumer issues, scams and investigations affecting residents in Washington State, for a one-day event on Thursday, January 25 at the Peter Kirk Community Center. Participants learned the latest news on scams, how to protect their identity, consumer tips and more. Special thanks to Aegis of Kirkland for providing a box lunch to all participants and presenters.



Anti-Fraud Fair

LIL HOOPERS TIPS OFF

A new season of Lil Hoopers Basketball started in early January. Over 200 boys and girls ages 5-8 are practicing their skills by dribbling down the court, looking for an open pass or making baskets.

2024 YOUTH BASKETBALL GAMES BEGIN!

Saturday, January 6 marked the start of games for the City's 2023-2024 3rd-6th Grade Youth Basketball League. New this year is our partnership with the Pacific Northwest Basketball Officials Association (PNBOA). We have 38 teams this season and games over the past few weeks have been a success. A huge thank you to our volunteer coaches who have put in the time for their teams to prepare for these games! This league runs through the middle of March and provides the players to learn the basic skills of basketball, teamwork, and good sportsmanship.

TEEN INPUT LEADS TO NEW LOCATIONS

During lunchtime outreach at Kamiakin Middle School and Juanita High School in January, teens shared concern that the teen events are often in similar locations, and it is not always easy to get around town. Based on this feedback the teen team is optimizing events for spring and summer, so that events are held at locations spread around Kirkland to be more accessible and break down barriers.



Teen outreach at Juanita High School

SPECIAL EVENT SERVICES

Staff support activities listed below through permitting; coordination with other City departments for street closures, Fire and Police support, safety and sanitary regulations, and banners; City facility use such as parks, parking lots, and streets, evening and weekend on-call logistical support; and communication with the public. Learn more at [KIRKLANDWA.GOV/SPECIALEVENTS](https://www.kirklandwa.gov/special-events).



The following events are tentatively scheduled to take place in 2024. Please note, all dates are subject to change.

2024 Event Calendar		
January	February	March
		17 - Shamrock Run (JP, JB)
		24 - Nowruz Celebration (MA)
		31 - Easter Egg Hunt (PK)
April	May	June
27 - Oral Cancer Walk (JP, JB)	5 - Kirkland Half & 5K (JP, JB, CKC)	1 - NAMIWalk (MA)
28 - Beltane Festival (JP)	27 - 7 Hills of Kirkland (MA, 132nd)	5, 12, 19, 26 - Kirkland Wed. Market (MA)
		7, 8, 9 - Shakespeare in the Park (JP)
		7, 14, 21, 28 - Juanita Friday Market (JP)
		15 - Eastside Honoring Juneteenth (JP)
July	August	September
3, 10, 17, 24, 31 - Kirkland Wed. Market (MA)	1, 8, 15, 22, 29 - Evening Concerts (MA)	4, 11, 18, 25 - Kirkland Wed. Market (MA)
5, 12, 19, 26 - Juanita Friday Market (JP)	2, 9, 16, 23, 30 - Juanita Friday Market (JP)	5, 12 - Evening Concerts (MA)
9, 16, 23, 30 - Kids Concerts (JP)	4 - Lammas Festival (JP)	6, 13, 20, 27 - Juanita Friday Market (JP)
11, 18, 25 - Evening Concerts (MA)	6, 13, 20 - Kids Concerts (JP)	22 - Mabon Festival (JP)
12, 13, 14 - Kirkland Uncorked (MA)	7, 14, 21, 28 - Kirkland Wed. Market (MA)	
20 - Flatstick Pub Anniversary (MA)	10 - Eastside Salsa Marina (MA)	
	17 - Dennyfest (OO)	
	18 - Waterfront Car Show (CBD, MA)	
	24, 25 - StoryBook in the Park (JP)	
October	November	December
19 - Lake Washington Half (JP, JB, CKC)		7 - Winterfest (MA)
26 - Pumpkins in the Park (MA)		15 - 12Ks of Christmas (MA, CBD, CKC)
27 - Samhain Celebration (JP)		



Bike Ride Participants



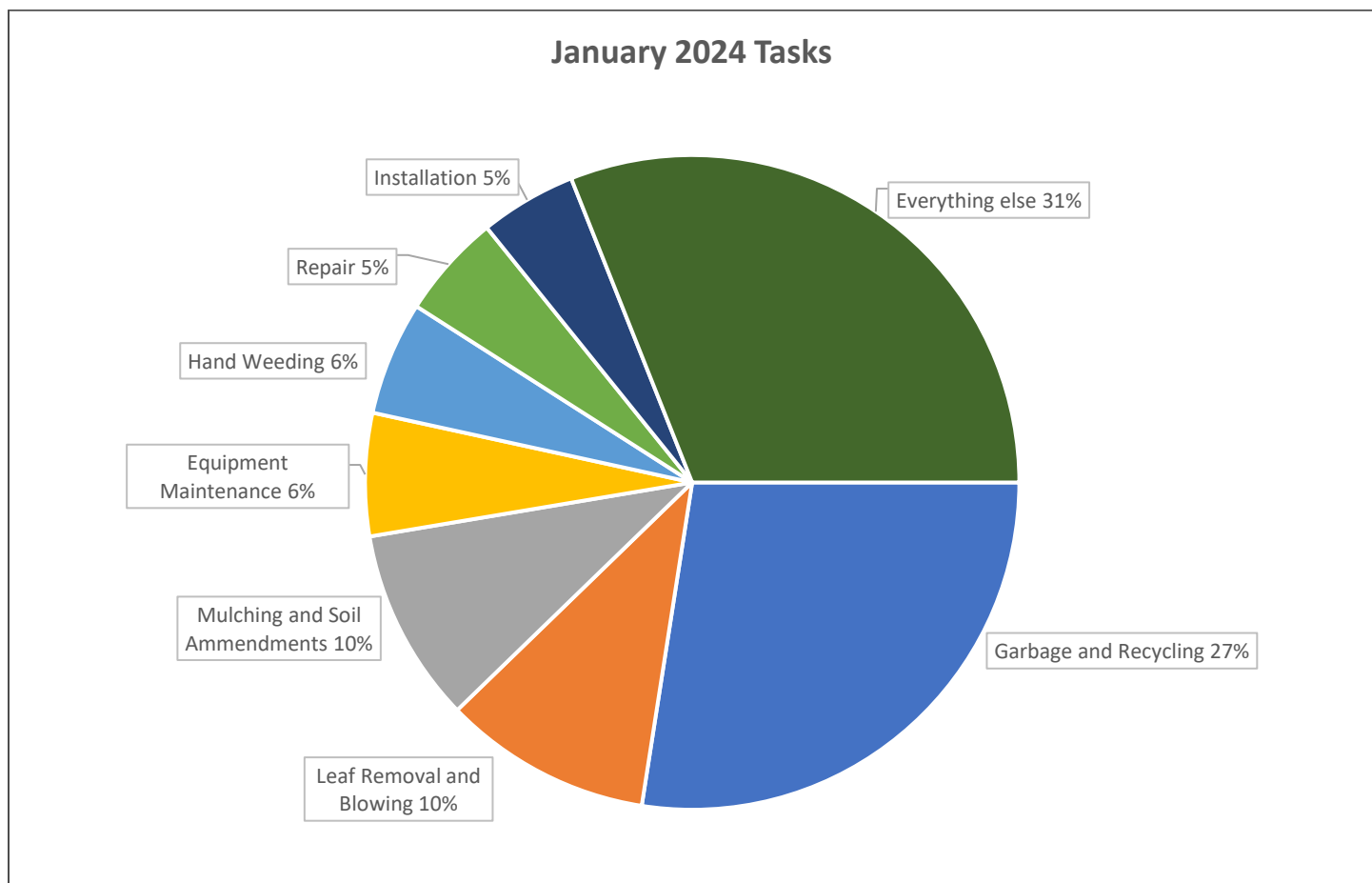
Kirkland Wednesday Market

PARKS MAINTENANCE DATA

LABOR HOURS BY TASK

Task	Hours
Beach Maintenance	2.00
Brush Clearing	94
Cemetery and Burial Services	49.75
Cleaning	148.75
Contracted Crew Restoration of Natural Areas	4.5
Edging and Line Trimming	27.75
Equipment Maintenance	213.5
Event Support	33.5
Garbage and Recycling	967.25
Hand Weeding	198
Inspection	109
Installation	168
Inventory Management	9

Task	Hours
Leaf Removal and Blowing	362.25
Mulching and Soil Ammendments	338.25
Nursery Management	65.75
Outreach and Education	2.5
Pesticide Application	2
Planting	12.5
Pruning	48
Repair	181.5
Restroom Cleaning	140.5
Snow Removal and De-Icing	72.75
Sport Field Maintenance	17.25
Tree Inspection and Inventory	1
Tree Removal and Chipping	135
Turf Repair and Maintenance	117.25
GRAND TOTAL	3,521.50



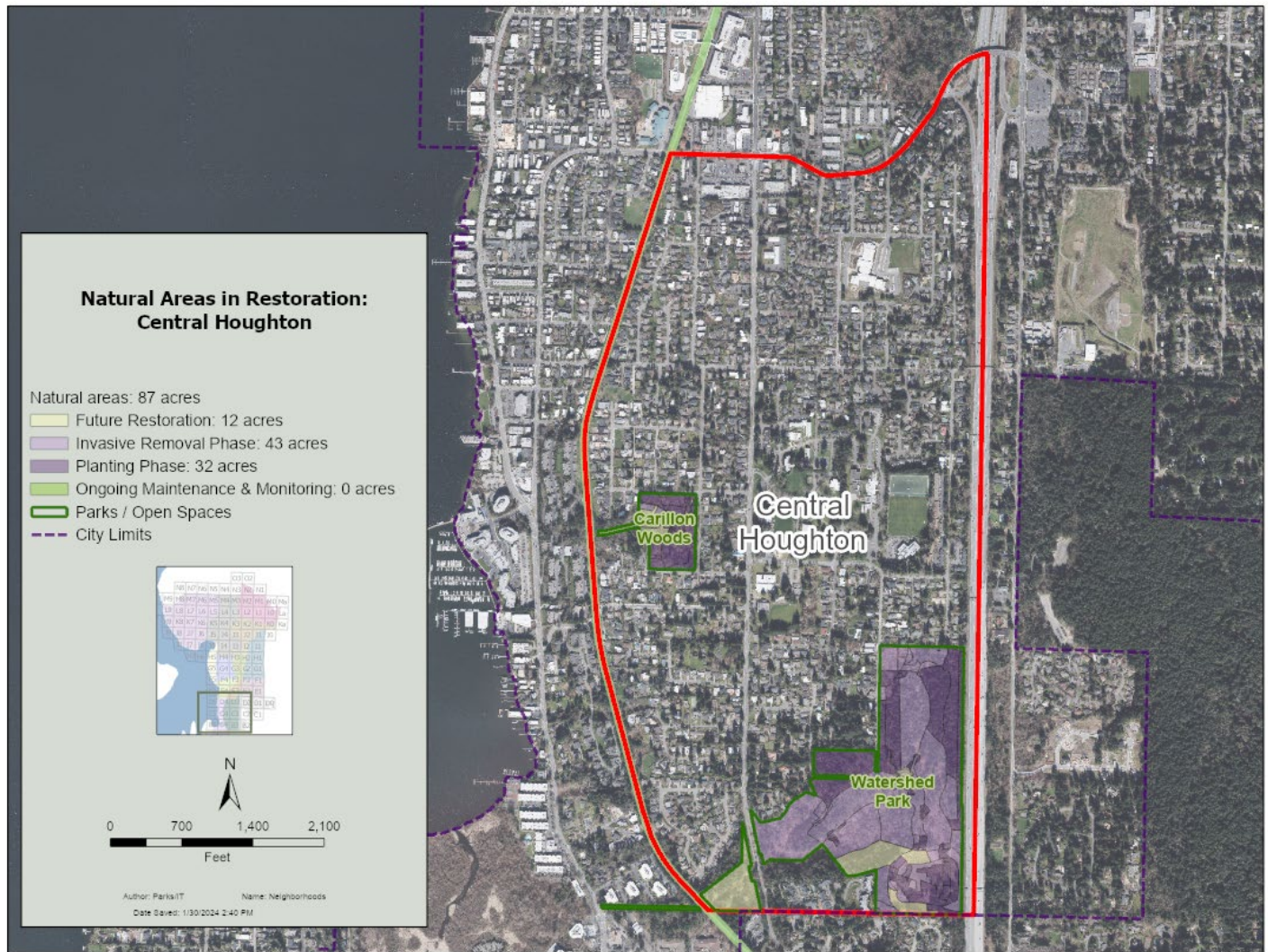
PARKS MAINTENANCE LABOR HOURS BY PARK

Park/Location	Hours
132nd Square Park	174.5
2nd Avenue South Dock	4.75
Ben Franklin Elementary School Field	27.75
Brookhaven Park	3.75
Bud Homan Park	3.75
Carillon Woods	18.5
Cedar View Park	5
City Hall	11.75
CKC	0.5
Cotton Hill Park	2
Crestwoods Park	134.5
David E. Brink Park	74
Doris Cooper Houghton Beach Park	104.25
Edith Moulton Park	54.5
Emerson High School Field	5.75
Everest Park	277
FH1, FH2, FH3, FH4, FH5, FH7, FH8, FH9	10.75
Finn Hill Middle School Field	10.75
Fire Stations 21, 22, 24, 25, 26, 27	31
Fisk Family Park	65.75
Forbes Creek Park	11.25
Forbes Lake Park	2.25
Gemmill Heights	0.5
Hazen Hills Park	1.5
Heritage Park	145.75
Heronfield Wetlands	8.5
Highlands Park	7.75
HL1	0.75
Josten Park	6
JU1, JU2 & JU4	8.25
JU3	46.25
Juanita Bay Park	156.5
Juanita Beach Park	205.25
Juanita Elementary School Field	9.75
Juanita Heights Park	4
KG1 & KG2	1
Kingsgate Park	4
Kirkland Cemetery	245.25
Kirkland Justice Center	6.5

Park/Location	Hours
Kirkland Middle School Field	26.25
Kiwanis Park	7.25
Lake Ave W Street End Park	3.5
Lakeview Elementary School Field	7.25
Marina Park	149.5
Mark Twain Elementary School Field	5
Mark Twain Park	16.25
Marsh Park	125.25
McAuliffe Park	169.25
Neal-Landguth Wetland Park	0.5
North Kirkland Com Ctr & Park	22.75
North Rose Hill Woodlands Park	61.75
NRH1, NRH2, NRH3, NRH4	2.5
O O Denny Park	128
Parks Maintenance Center	240.25
Peter Kirk Elementary School Field	4.5
Peter Kirk Park	177
Peter Kirk Pool	24
Phyllis A. Needy - Houghton Neighborhood	6.75
Reservoir Park	31.75
Rose Hill Elementary School Field	8.5
Rose Hill Meadows	124.75
Rotary Central Station	6.5
Settler's Landing	4.5
Snyder's Corner Park	16.5
South Norway Hill Park	6.75
South Rose Hill Park	36.75
Spinney Homestead Park	8.5
Terrace Park	4.5
TL1 & TL3	1.25
Tot Lot Park	14
Totem Lake Park	78
Van Aalst Park	27.25
Watershed Park	14.75
Waverly Beach Park	44.25
Windsor Vista Park	17.25
Winski Parcel	0.75
Wiviott Property	0.5
Yarrow Bay Wetlands	1.5
GRAND TOTAL	3,521.50

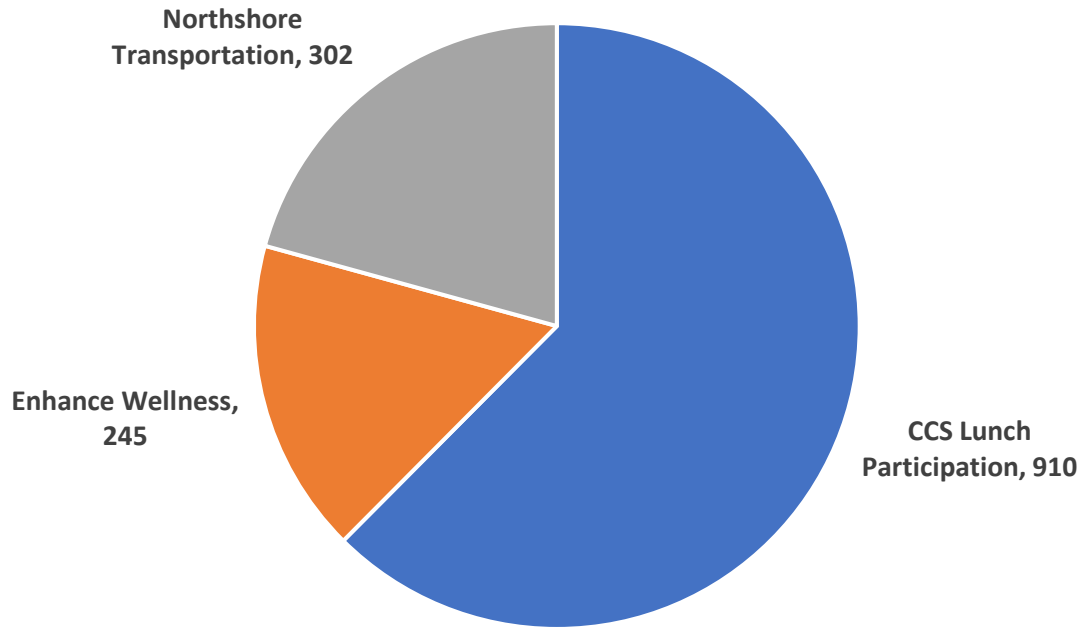
GREEN KIRKLAND PARTNERSHIP DATA

Green Kirkland currently has 35 active natural parkland sites in the City of Kirkland and has enrolled over 315 acres in restoration. Here are the 2024 statistics for the Central Houghton neighborhood.



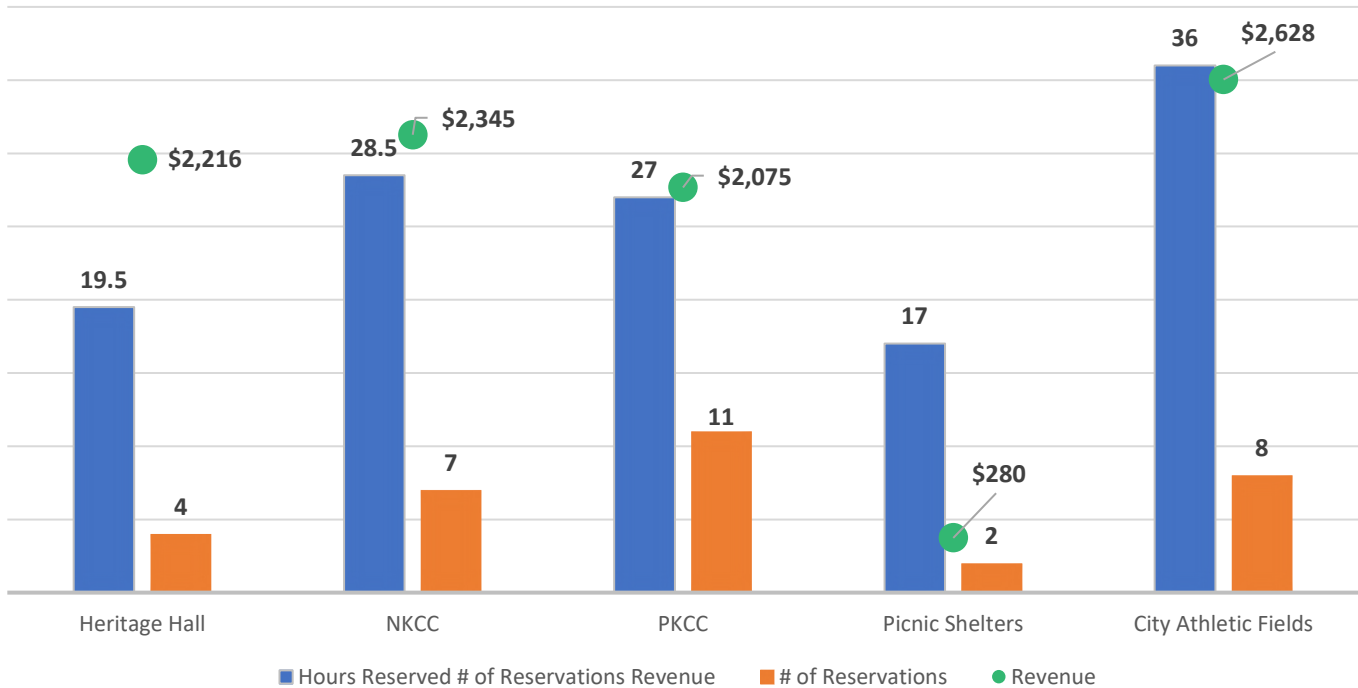
RECREATION DATA

SENIOR SERVICES DECEMBER 2023

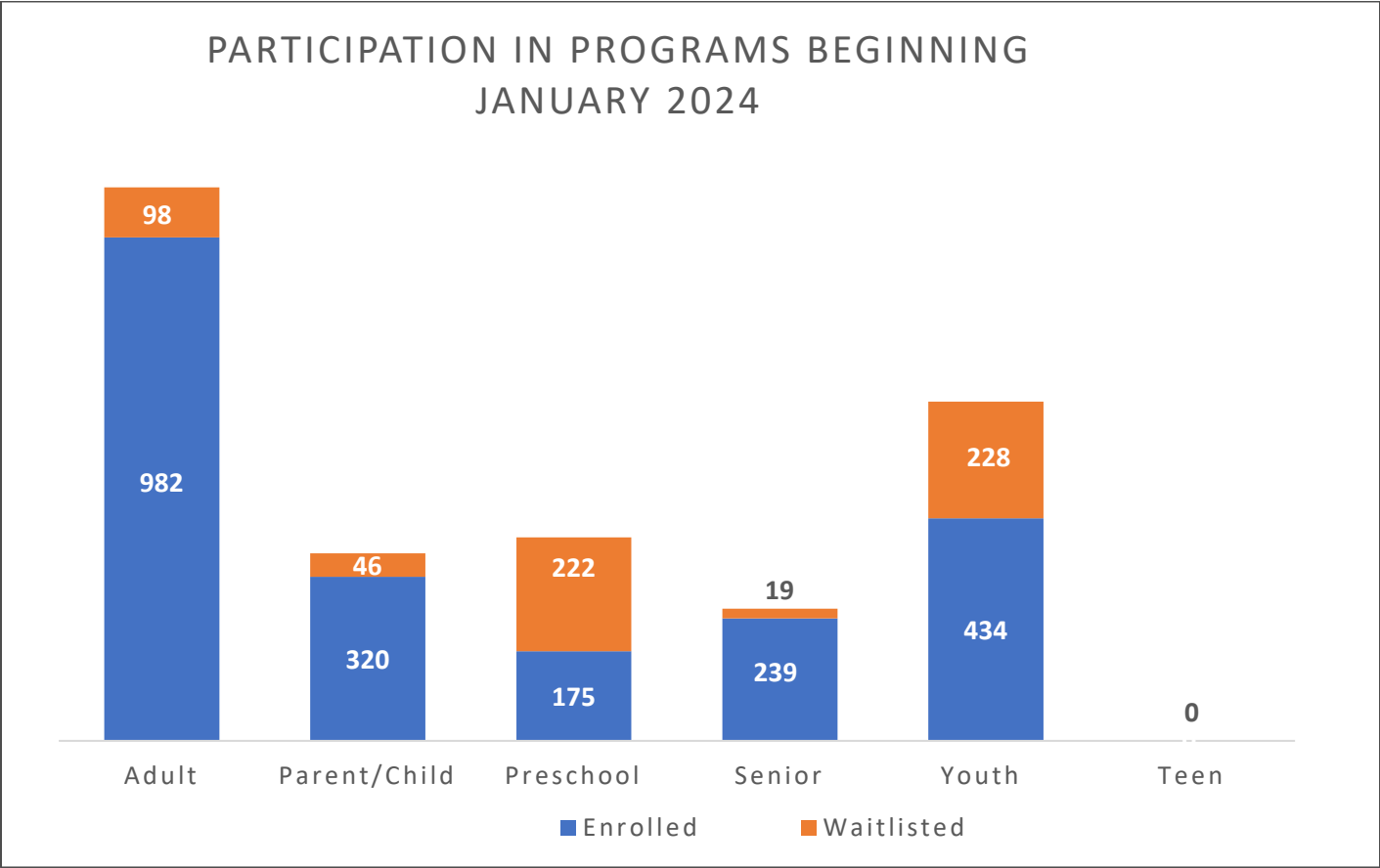


**Senior Services Data reported by agencies the month after services provided*

ALL RENTALS - JANUARY 2024



RECREATION PROGRAM DATA



RECREATION SCHOLARSHIP DATA

Recreation Scholarships		
	Current Month	YTD
Applications approved	7	7
Donation funds used	\$475.53	\$475.53
Donation funds received	\$89.00	\$89.00