



Parks Funding Exploratory Committee Meeting #10

February 9, 2023



PFEC Agenda Overview

- Dinner, team connecting time
- Welcome, Houghton P&R update
- FLOW
- Council Process
- Responses to question themes & Balancing Act
- World Café (6:40 – 8:20pm)
- *Closing (done by 8:30pm)*



Local Land Acknowledgement

We acknowledge that the Southern Salish Sea region lies on the unceded and ancestral land of the Coast Salish peoples, the Duwamish, Muckleshoot, Puyallup, Skykomish, Snoqualmie, Snohomish, Suquamish and Tulalip tribes and other tribes of the Puget Sound Salish people, and that present-day City of Kirkland is in the traditional heartland of the Lake People and the River People. We honor with gratitude the land itself, the First People – who have reserved treaty rights and continue to live here since time immemorial – and their ancestral heritage.



Welcome from Kurt

- Houghton Park & Ride Property Update
- Purpose of PFEC



Purpose and Outcomes for Feb 9

Purpose: The purpose of this Parks Funding Exploratory Committee meeting is for individual members to gain clarity on what they personally want to include in final recommendations to City Council.

Outcomes:

- Gain knowledge on recent developments regarding Houghton P&R
- Gain knowledge on questions posted at 1/26 meeting
- Understand the goals and milestones for the next four meetings
- Gain personal clarity on top priorities you would vote for

PFEC Decision Flow

Framing Questions that will guide us: <ul style="list-style-type: none"> • What should the community buy? • How should we fund it? • Do you think it will pass? 	Tiers to categorize recommendations: <ol style="list-style-type: none"> 1. Definitely include; cents/thousand 2. Not sure; for Council consideration 3. Not recommended at this time; why 	Decision Process Values: (ATTIC) <ul style="list-style-type: none"> • Aligned with PROS Plan & Feasibility Study • Trust and good intent • Time (just right amount to deliberate) • Inclusive of all PFEC perspectives • Collaborative
---	---	--

Thursday 2/9	Monday 2/13	Council Tues 2/21	Thursday 2/23	Thursday 3/2	Council Tues 3/21	Council Tues 4/4 & Tues 4/18
Goal: Personal clarity Houghton update Respond to 1/23 questions/comments Balancing Act #2 results Deep Dive into Major Components	Goal: Group clarity-elements Respond to 2/9 questions Test for consensus Funding Mechanism Deeper Dive	Facility Feasibility Study Update	Goal: Group clarity on elements, funding Test for consensus: majority package Funding Mechanism Deeper Dive	Goal: Vote Final vote Decide funding mechanism Next Steps Celebrate & thanks	Preliminary PFEC Report/ Recommendation	4/4: Council Resolution to accept PFEC Report/ Recommendation (hear) 4/18: Resolution – Adopt

City Council Process - tentative

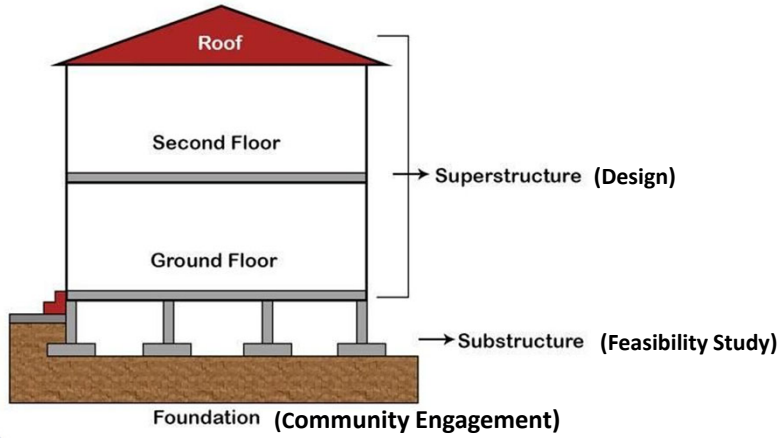
March 2023	April	May	June	July	August - November
<p>3/9 PFEC Report/ Recommendation *: Staff draft (based on PFEC feedback/decisions) and submit to City Manager for review</p> <p>3/21: Council Meeting: Council receives preliminary PFEC Report/ Recommendation</p>	<p>4/4 Council Meeting: Council receives draft resolution accepting PFEC Report/ Recommendation, provides feedback to staff</p> <p>4/18 Council Meeting: Council adopts resolution accepting the PFEC Report/ Recommendation</p> <p>Statistically valid survey runs for at least two weeks in April-May, followed by open community survey. Results shared with Council.</p>	<p>Council discusses and decides what action to take.</p> <p>Council hears results of survey.</p> <p>Council Meetings: 5/2 and 5/16</p>	<p>Council discusses and decides what action to take.</p> <p>Draft ballot measure(s) options and ballot language reviewed.</p> <p>Council Meetings: 6/6 and 6/20</p> <p><i>Council authorizes recruitment for Pro/Con Committees, Appointments made, Pro/Con write ballot statements</i></p>	<p>July 18: Last City Council Meeting to vote on ordinance to place a measure on November 2023 ballot</p> <p>Council Meetings: 7/5 and 7/18</p>	<p><i>August 1: Filing due date with King County</i></p> <p><i>August 4: Explanatory Statement Due</i></p> <p><i>August 8-10: Pro/Con statements and rebuttals</i></p> <p><i>August-November: Education period**</i></p> <p><i>October 18: Ballots mailed</i></p> <p><i>November 7: General Election</i></p>

Response themes and questions post 1/26

- Facility Contracting/Operations Model
- What about partnerships?
- Operating Costs
- Feasibility Study vs. Design
- Peter Kirk Park
- Other ideas
- Other 2023 Ballot Measures for Kirkland Voters

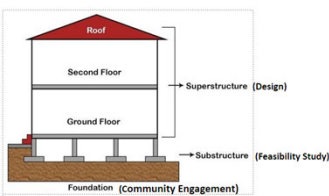


Feasibility Study vs Design



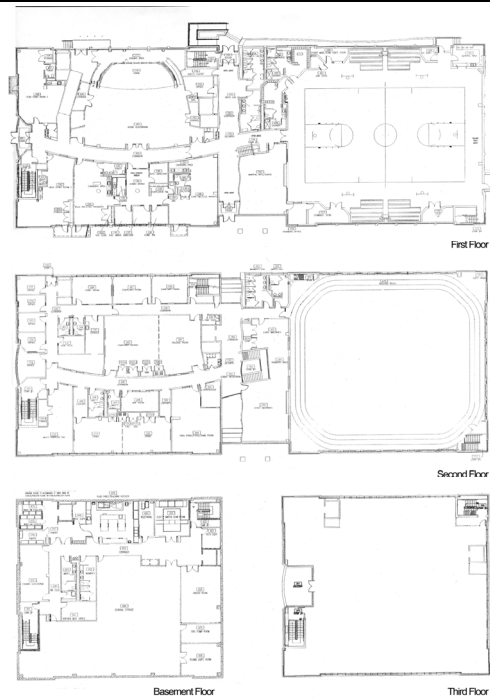
- Preliminary exploration to determine project viability
- Understand elements that inform ultimate & feasible design
- Outcomes: gauging community interest, financial viability, determine risks, set vision for operations and design
- Concept plans that capture space type and use, size and massing, rough capital and operating costs

Feasibility Study vs Design



Design:

- Expands on initial concepts
- Specification for exact size, use of spaces, layout and flow, facility features
- Programmatic usage & features
- Customer service & support systems
- Architectural design
- Equipment, mechanical systems, electrical, plumbing
- Universal design & sustainability components
- Safety, security, technology



Operating Costs: Houghton Park and Ride A

Category	Expense*
Revenue	\$3,660,555
Full time staff	\$2,013,353
Part time staff	\$1,281,295
Commodities	\$190,000
Contractual	\$925,479
City charge back (18%)	\$793,823
IT Fees	\$127,284
Replacement Fund	\$200,000
Total Expenses	\$5,531,234
Net	\$-1,870,679

General Expenses

- Staffing (FT/PT)
- Commodities
- Contractual Obligations
- City Charge Back (18%)
- IT Charge Back (Fee per computer)
- Improvement Fund (Reserve fund for major maint. & repair)

Full Time Staffing

- Facility Manager
- **Sports & Comp Supervisor** – gymnasium & sport programs
- **Fitness Supervisor** – group exercise & facility oversight
- Front Desk Supervisor – admission & membership
- **Aquatics Supervisor** – programs, lifeguard, & facilities
- **Aquatics Coordinator** – lifeguards & programs
- Lifeguards – safety & limited programs
- **Youth Prog Supervisor** – youth non-sport & camps
- **Enrichment & Senior Sup** – non-sport adult & senior
- Maintenance Sup
- Maintenance Tech
- Custodial

*First year of operation. The flashcard numbers are a 5-year average.

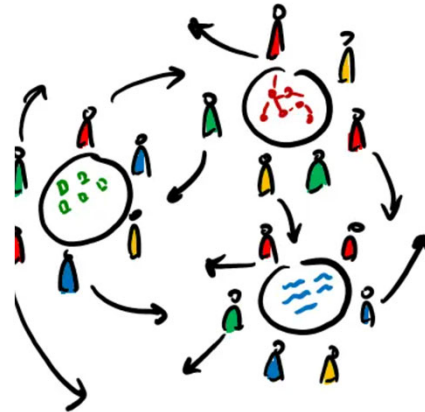
Response themes and questions post 1/26

- Facility Contracting/Operations Model
- What about partnerships?
- Operating Costs
- Feasibility Study vs. Design
- Peter Kirk Park
- Other ideas
- Other 2023 Ballot Measures for Kirkland Voters



World Café Process: Learn Together

- Four Tables, each hosting a different topic
- Each person visits each table
- You do not have to travel as a group, go to your interest
- No more than ___ per table
- Use the pens and paper: everyone writes and draws to track your questions and suggestions; AND, leave room
- Table Host and Subject Matter Expert stay at tables
- Table Host will summarize for table participants at the beginning of rounds 2, 3, and 4; and at the end for the whole room

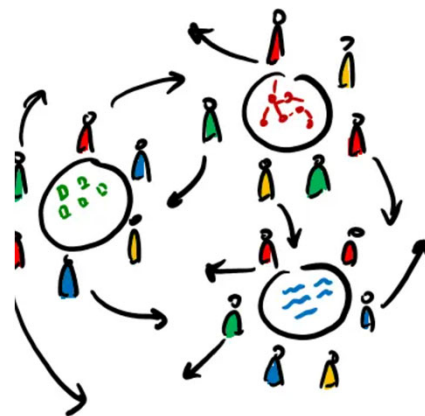


World Café: Key Questions to Help YOU

- Ask a question or make a suggestion that will help YOU decide what you will support / vote for.
- Ask a question or make a suggestion that you think will help the ballot measure pass – tell us WHY.

Table Topics:

1. Houghton Park & Ride Facilities
2. NKCC Facilities
3. Park Amenities and Programs
4. How Much? Total Cost Cap



Closing – Thank You

- **Next Meeting: Monday, February 13, 6 p.m.**
 - Topic: Collaborative Discussion toward Recommendation
 - Location: Parks Maintenance Center
- **To-do before next meeting:**
 - PFEC Survey
- Virtual PFEC Binder
 - All materials posted here for reference

