

## GKP Steward Instructions - Volunteer Activity Log

The Green Kirkland Partnership tracks program accomplishments and service hours for reporting, grants, liability, and appreciation events. The volunteer activity log collects this data from Stewards.

### Fill out the Volunteer Activity Log online each month

Data is due the first week of the month for the previous month. Form is in 'Resources' on GKP website:

<https://www.kirklandwa.gov/Government/Departments/Parks-and-Community-Services/Green-Kirkland-Partnership/Resource-Page/Work-Log-Form-GKP-Stewards/Volunteer-Activity-Log>

### Data Requested

Volunteer info:

- **For events:** Rosters/waivers must be submitted for every 'one-time' event.
  - Ensure the Park, Steward, Date, and Duration section is complete and cross-off any non-attendees if using a pre-filled roster.
  - Upload scans/photos online or drop originals at a Parks office. Photo/Scan must include each entire sheet (don't layer sheets).
- **For ongoing activities:** Names of ongoing volunteers and hours served. An ongoing waiver must be on-file for each volunteer prior to service.

Activity info:

- **Restoration Management Unit(s) (RMU):** Use the GKP Restoration map to find your location.
- **Type of activity:** Invasive plant removal/weeding, mulching, nursery, planting, and/or watering.
- **Photos:** upload pictures of event activities and/or groups.

Restoration Phase change info (if applicable):

- Type of change, location, square footage, map of new planted area or new removal area.

Restoration phases are updated on our maps ~2x per year. If your work (e.g., planting new area or new removal) may have changed the phase of an area by more than ~2,000 square feet we ask for more info to map efficiently. *Note: most areas are already enrolled in restoration phase 1.*

### Description of Mapped Restoration Phases (See Steward Field Guide pages 35-70)

#### **Phase 0: Future Restoration**

Not enrolled in restoration. **Yellow on GKP restoration map.**

#### **Phase 1: Invasive removal**

New enrollment with first time invasive plant control. Most Steward areas are already enrolled in this phase via invasive tree control by the parks crew. **Light purple on GKP restoration map.**

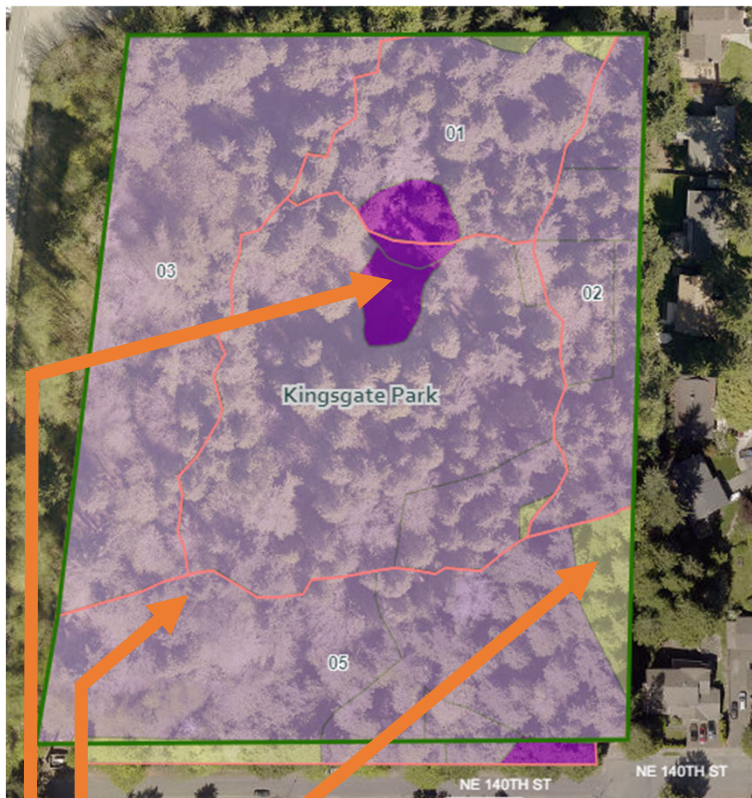
#### **Phase 2-3: Planting and maintenance**

Enroll in this phase when phase 1 area is first planted. **Dark purple on GKP restoration map.**

#### **Phase 4: Long-term maintenance and monitoring**

Staff enroll areas based on assessment. **Bright green on GKP restoration map.**

## Examples of Restoration Phases on GKP Restoration Map



### Parks



### Green Kirkland Management Units



### Green Kirkland Restoration Sites



Future Restoration



Invasive Removal Phase



Planting Phase

#### **Phase 0: Future restoration**

Not enrolled in restoration.



#### **Phase 1: Invasive removal**



New enrollment with first time invasive plant control. Most Steward areas are already enrolled in this phase via invasive tree control by the parks crew.

#### **Phase 2-3: Planting and maintenance**

Enroll in phase 2-3 by planting new phase 1 area.  
Most common phase change for Stewards.



#### **Phase 4: Long-term maintenance and monitoring**

Staff enroll areas based on assessment. Not pictured.

