

**CITY OF KIRKLAND
DEPARTMENT OF PUBLIC WORKS**

**Trend Lift Station Project
CIP NO. SSC-0600000
Project No. 34-24-PW**

Certificate of Engineer:

This addendum has been prepared by or under the direction of the undersigned, whose seal as a Professional Engineer licensed to practice in the State of Washington, is affixed below.



Rodney Langer, PE
Project Manager

Approved for Construction:

Rob English, PE
Capital Division Manager

To: All Holders of Specifications, Proposal and Contract Documents

This Addendum is hereby made a part of the contract documents to the same extent as though it were originally included therein.

This Addendum contains five (5) pages including this page and the cover page, plus three additional sheets for a new appendix.

Issued this 16th day of September 2025.

Bidders must acknowledge receipt of this addendum in the space provided on the Bid Proposal (Bid Proposal, Page 6). Failure to do so may subject the bidder to disqualification.

Table of Contents

Add a new content item list at the end – Appendix E: Available Drawings

Invitation for Bid

Add a new paragraph to the Invitation for Bid, immediately following the paragraph that begins “Questions regarding this project...” as follows:

The City will open the station for inspection, from grade level only, on September 18, 2025, from 8:00 am to 9:00 am, PDT. The City has no record drawings of the Trend Lift Station. There is no laydown or staging area designated by the City for this project.

Special Provisions

The Special Provisions have been modified with the following changes:

1. Add special provision to Section 1-05.6:

1-05.6 Inspection Work and Materials

Supplement this section with an additional paragraph at the end of the Section:

The City or its authorized agent will complete all materials testing including material compaction testing and concrete testing.

2. Delete the second paragraph of project special provisions Section 7-08.3(1)D (paragraph beginning “Provide an independent...”).
3. Delete special provisions Section 8-19 (regarding requirement for a field office for the Engineer’s staff).

4. Supplement project special provisions Section 9-05.13 with the following:

Ductile iron pipe for use for gravity and pressure applications shall be new, Class 50 with Protecto 401 Ceramic Epoxy lining, or approved equal lining.

5. Delete the first paragraph of project special provisions Section 9-37.1 and replace it with the following:

Two identical wastewater submersible explosionproof solids handling wastewater pumps shall be provided and installed in the lift station wet well. A third, identical pump assembly, not including discharge elbow, shall be provided to the City, delivered to the City's Public Works Maintenance facility. Pumps shall be vertical, submersible motor-driven solids handling pumps with discharge elbow, guide rails, and all appurtenances required for a complete installation per Section 8-26. Pumps shall be Flygt Model NP 3085 SH 3 ~255 with an output of 160 gpm at 55 feet total dynamic head and N-Impeller suitable for raw domestic wastewater service. Pump shall have a 4 HP submersible motor operating at 3455 rpm using 460V/3Phase/60Hz power. Pumps from alternative manufacturers will be considered upon submittal of materials demonstrating equivalency to the specified pumps.

6. Delete the second paragraph of project special provisions Section 9-37.4 and replace it with the following:

Manufacturer shall be Red Valve Series 42 Pressure Sensor & Series 742 Diaphragm Seal, or approved equal.

Appendix A: Plans

The Contract Plans have been modified with the following changes:

On Sheet C1:

- Supplement General Note #7 with the following additional sentence at the end of the note:

THE DEPTH OR ELEVATION OF THE SPU WATER TRANSMISSION MAIN IS NOT KNOWN. CONTRACTOR SHALL COORDINATE WITH SPU IN ADVANCE OF ANY PLANNED EXCAVATION WORK NEAR THIS TRANSMISSION MAIN.

- Supplement General Note #8 with the following additional sentences at the end of the note:

THE WET WELL CAN ONLY BE TAKEN OUT OF SERVICE FOLLOWING IMPLEMENTATION OF THE WASTEWATER BYPASS SYSTEM. THE

DISCHARGE HEAD FOR THE STATION AND FORCE MAIN FOLLOWING THE IMPROVEMENTS IS ESTIMATED TO BE 56 FEET TOTAL DYNAMIC HEAD. THE STATIC HEAD FOR THE STATION AND FORCE MAIN IS APPROXIMATELY 38 FEET. CONTRACTOR SHALL DETERMINE THE TOTAL DYNAMIC HEAD FOR THE CONFIGURATION OF THE COMBINATION OF THE EXISTING FORCE MAIN AND THE BYPASS SUCTION AND DISCHARGE PIPING. THE EXISTING FLOWS TO THE STATION ARE UNKNOWN BUT VARY SEASONALLY AND DIURNALLY. IT IS UNKNOWN HOW HIGH EXISTING SSMHS #3230 AND #3237 CAN BE SURCHARGED WITHOUT IMPACTING SEWER SERVICE.

On Sheet C2:

- Supplement the callouts for SSMHs #3230 and #3227 with the following additional note, same for each callout:

48" INTERNAL DIAMETER

On Sheet C4:

- Add Notes #3 and #4 as follows:
 3. CONTRACTOR SHALL PUMP OUT AND CLEAN EXISTING WET WELL FOLLOWING ESTABLISHMENT OF BYPASS, PRIOR TO COMPLETION OF IMPROVEMENTS AND MODIFICATIONS.
 4. THE ESTIMATED VOLUME OF THE FORCE MAIN (TO BE DRAINED) IS APPROXIMATELY 1,575 GALLONS. THE EXISTING FORCE MAIN IS APPROXIMATELY 1,075 FEET LONG. THE SSMH AVAILABLE FOR DISCHARGE OF WASTEWATER PUMPED FROM THE EXISTING STATION OR IMMEDIATELY UPSTREAM MANHOLES IS AT THE END OF THE FORCE MAIN, WEST OF THE STATION ON NE 112TH ST.

On Sheet C5:

- Delete Note 4 in its entirety and replace with the following Note 4:

EX. SS PIPE NOT IN SERVICE. SURVEY AND RECORD DRAWINGS INDICATE IT WOULD CONVEY FLOW FROM SSMH #3227 TO #3230. SEE GENERAL NOTE 8, SHEET C1, FOR BYPASS REQUIREMENTS.

On Sheet E4:

- Supplement Flag Note 9 with the following additional sentences:

THE EXISTING UTILITY POWER TO THE STATION IS 240V 3-PHASE, HIGH DELTA. CONTRACTOR TO CONFIRM WITH PUGET SOUND

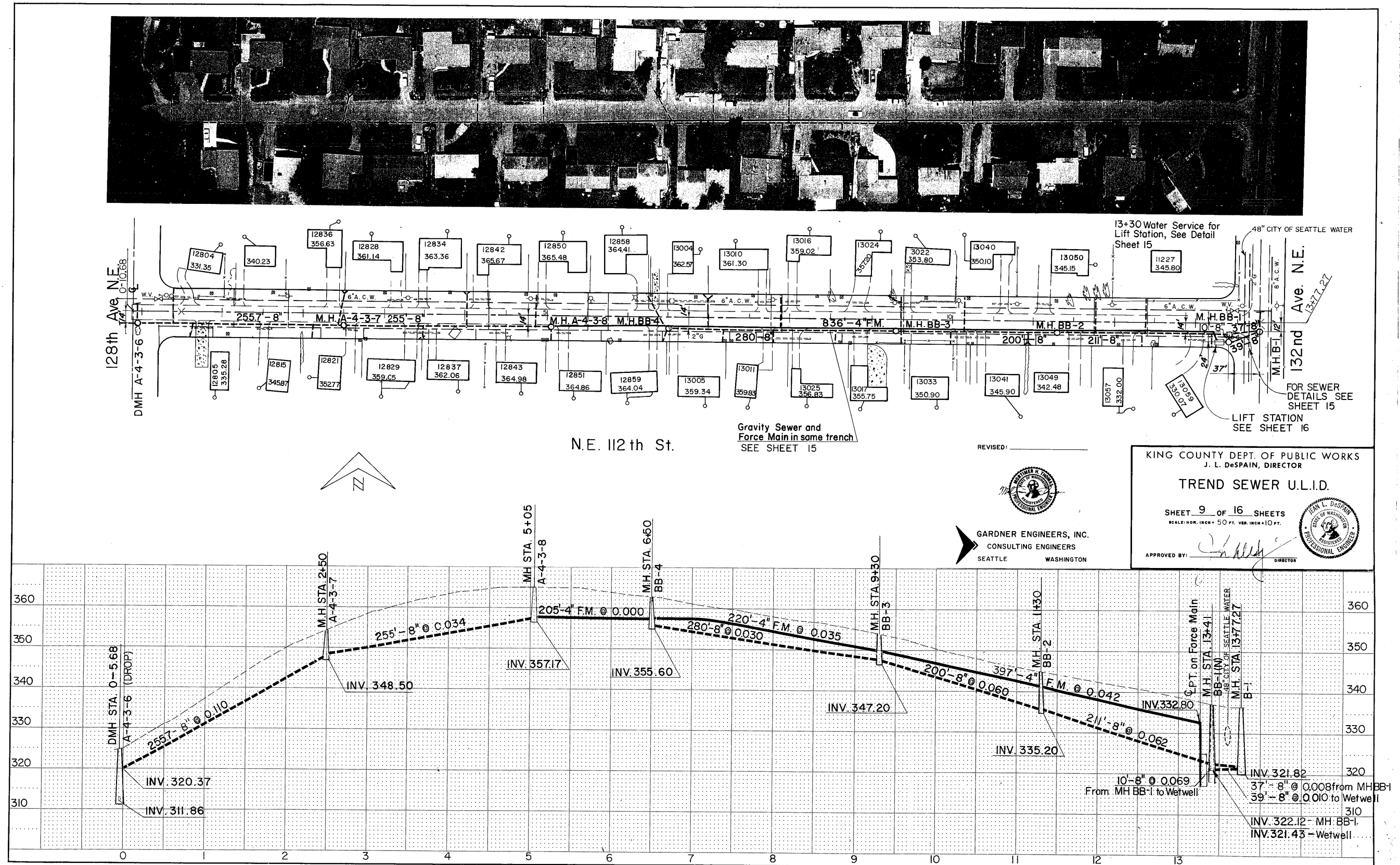
ENERGY (PSE). THE PSE POINT OF CONTACT IS AIDAN ANDERSON,
425-249-8497.

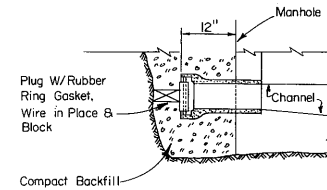
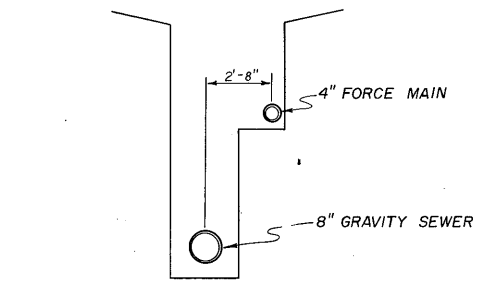
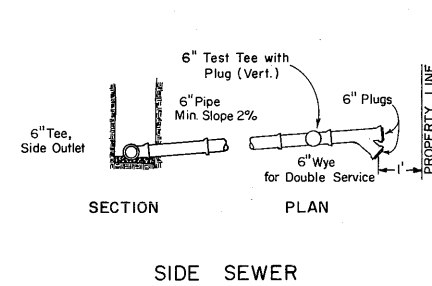
Appendix E: Available Resources

Include three attached drawings sheets as Appendix E:
Trend Sewer U.L.I.D. Sheets 9, 15 and 16 of 16

END OF ADDENDUM

APPENDIX E

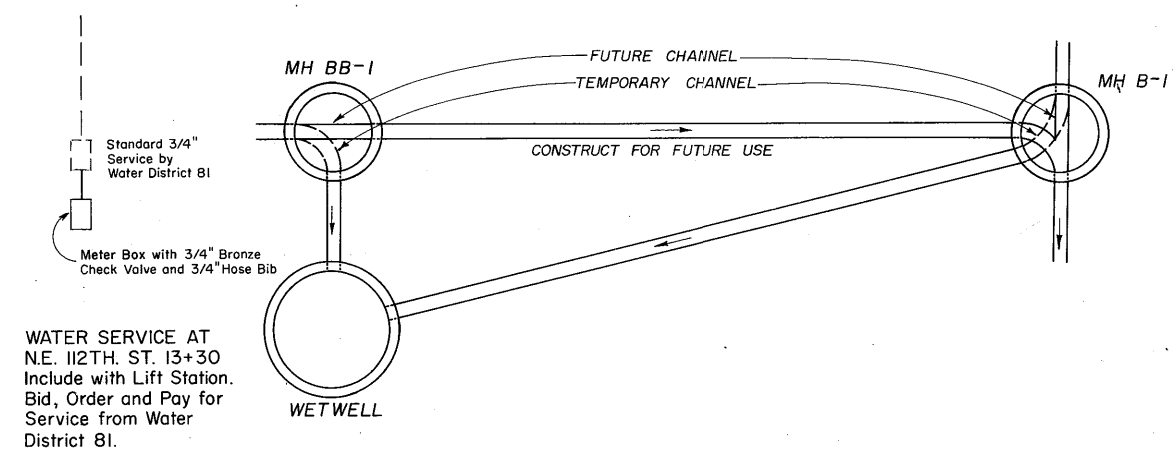




PIPE STUB AT MANHOLE

GRAVITY SEWER AND
FORCE MAIN IN SAME TRENCH
NE. 112TH ST. 5+05 to 13+30 (±)

SUMMARY OF QUANTITIES			
NO.	ITEM	QUANT.	UNIT
1	TRENCH EXCAVATION AND BACKFILL FOR MAINS	10,124	L.F.
2	TRENCH EXCAVATION AND BACKFILL FOR SIDE SEWERS	2,600	L.F.
3	BANKRUN GRAVEL BACKFILL	3,600	C.Y.
4	PIPE BEDDING MATERIAL	630	C.Y.
5	12-INCH PIPE IN PLACE	18	L.F.
6	8-INCH PIPE IN PLACE	10,106	L.F.
7	6-INCH PIPE IN PLACE (Side Sewers)	2,600	L.F.
8	4-INCH PIPE IN PLACE (Force Main)	845	L.F.
9	8" x 6" TEES	106	EA.
10	6" WYES OR TEES	154	EA.
11	MANHOLE IN PLACE	43	EA.
12	DROP MANHOLE IN PLACE	2	EA.
13	WATER	50	M. GAL.
14	TEMPORARY COLD MIX PAVEMENT PATCH	800	S.Y.
15	ASPHALT CONCRETE FOR PAVEMENT PATCH	1200	S.Y.
16	CEMENT CONCRETE FOR PAVEMENT PATCH	30	S.Y.
17	REMOVE AND REPLACE LAWNS	1400	S.Y.
18	LANDSCAPE RESTORATION		L.S.
19	DRAINAGE STRUCTURE AND CULVERT MODIFICATION		L.S.
20	TEMPORARY FENCING		L.S.
21	CRUSHED SURFACING FOR SHOULDER RESTORATION	200	C.Y.
22	LIFT STATION		L.S.



SEWER DETAILS
AT LIFT STATION

REVISED:

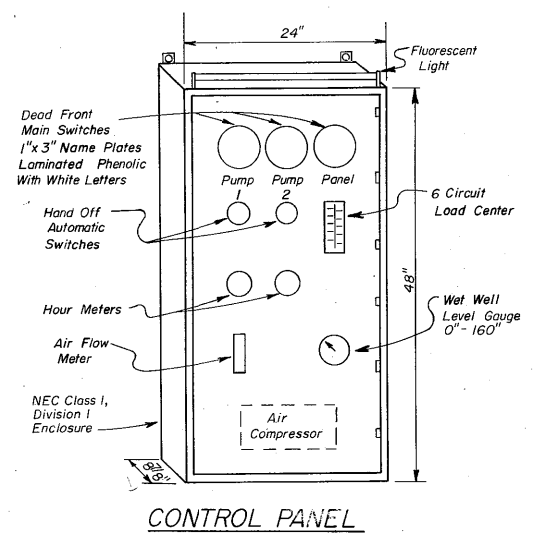
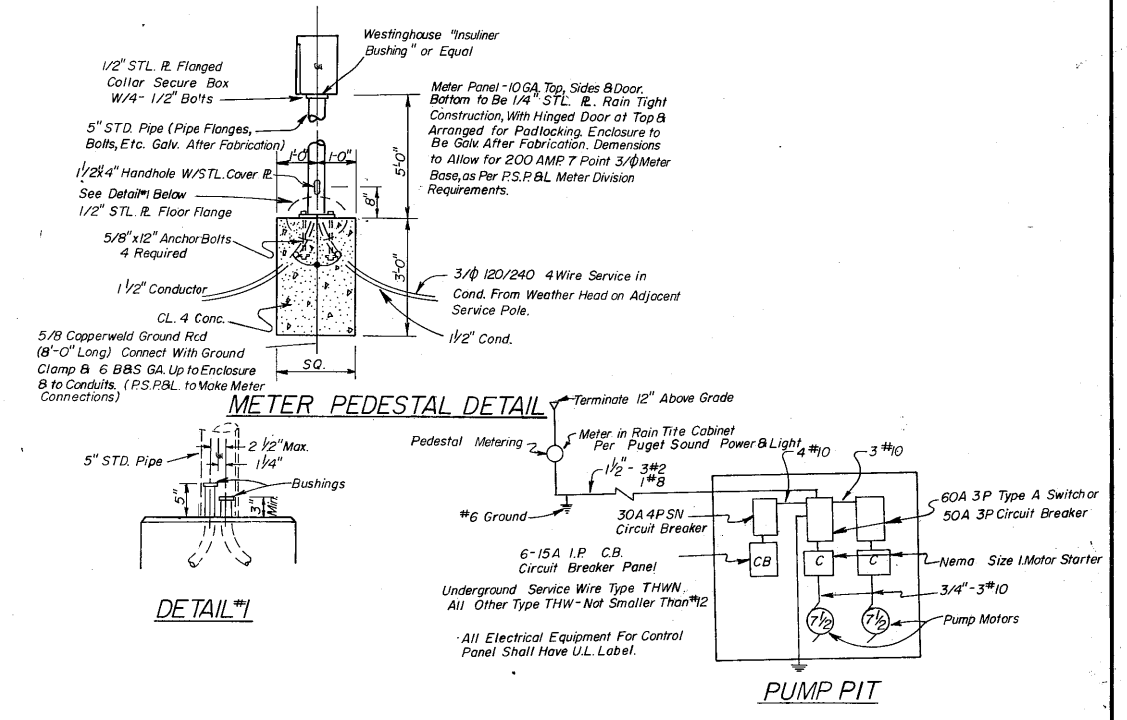
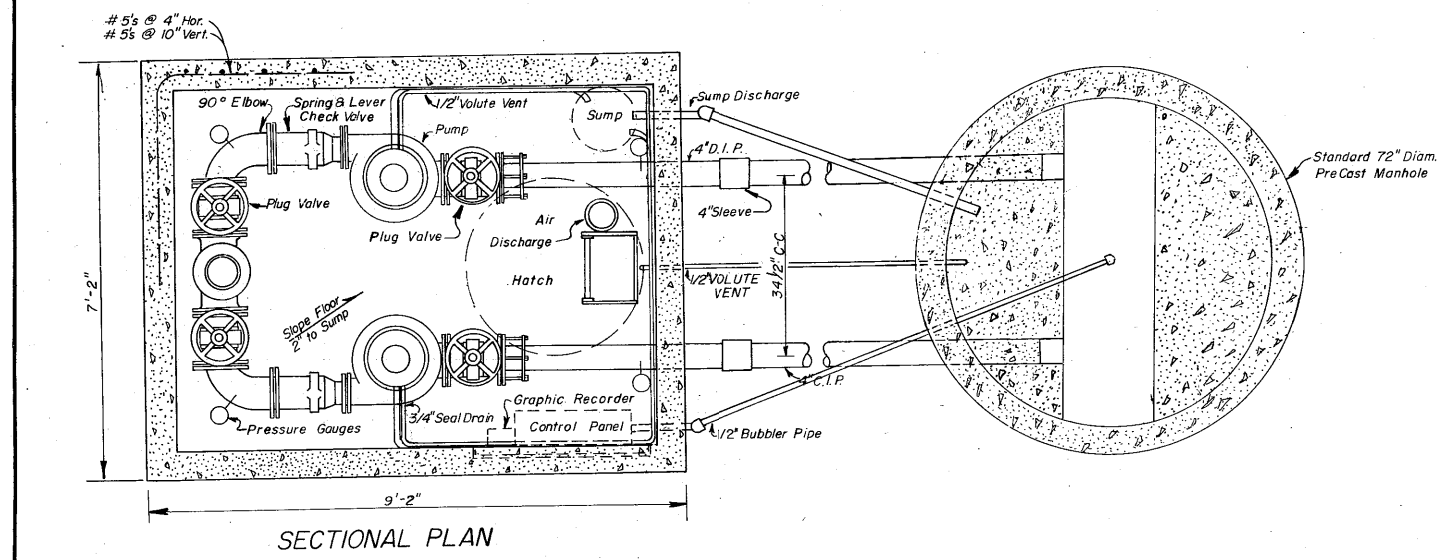
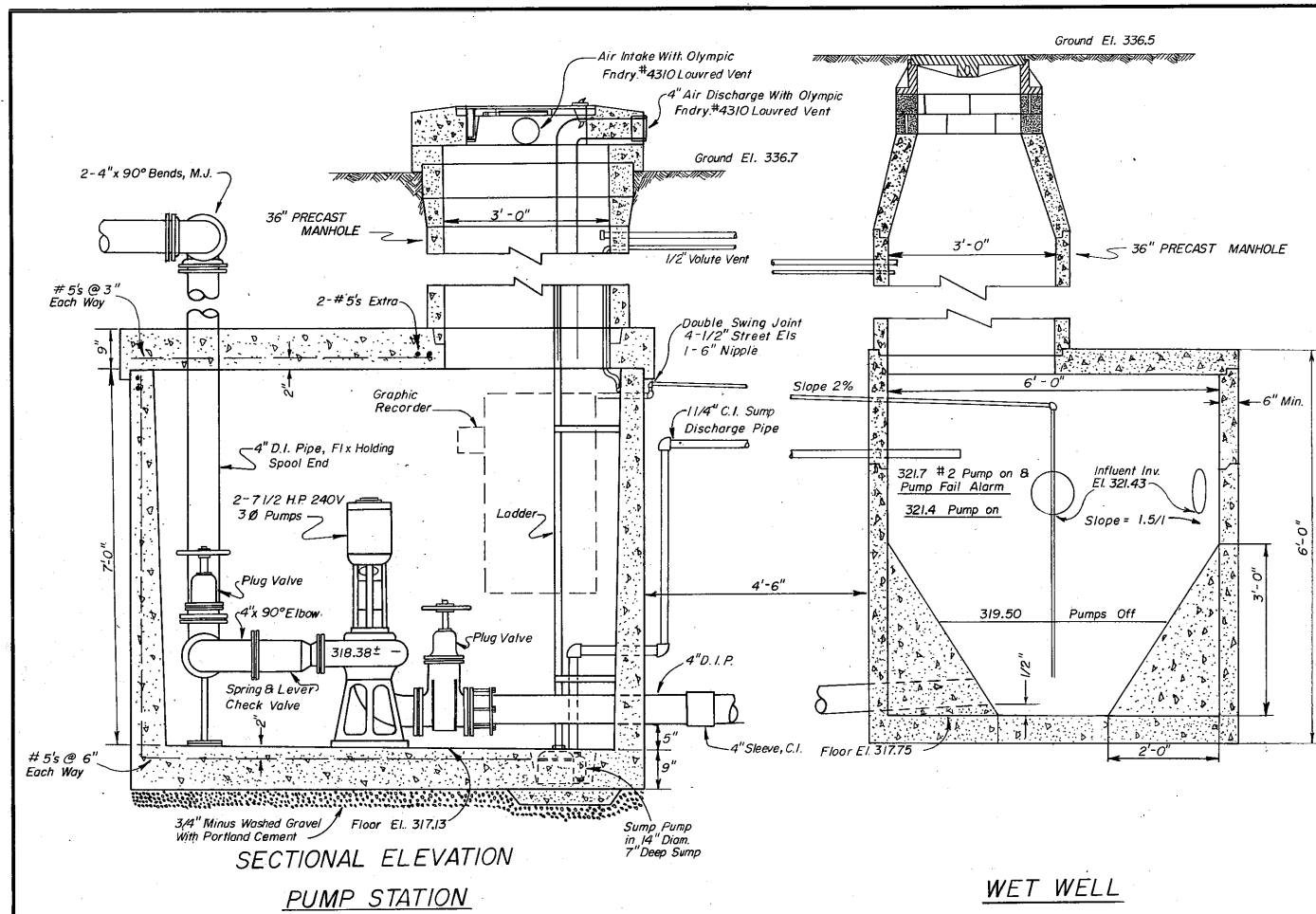
GARDNER ENGINEERS, INC.
CONSULTING ENGINEERS
SEATTLE, WASHINGTON

KING COUNTY DEPT. OF PUBLIC WORKS
J. L. DeSPAIN, DIRECTOR

TREND SEWER U.L.I.D.

SHEET 15 OF 16 SHEETS
SCALE: HOR. INCH = FT. VER. INCH = FT.

APPROVED BY: *J. L. DeSpain* DIRECTOR



REVISED:

GARDNER ENGINEERS, INC.
CONSULTING ENGINEERS
SEATTLE WASHINGTON

KING COUNTY DEPT. OF PUBLIC WORKS
J. L. DeSPAIN, DIRECTOR

TREND SEWER U.L.I.D.

SHEET 16 OF 16 SHEETS

APPROVED BY: *[Signature]* DIRECTOR