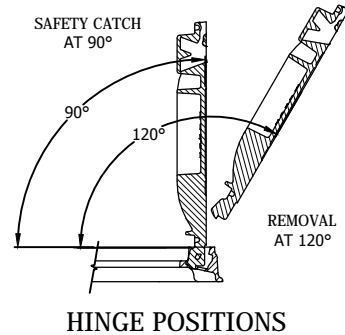
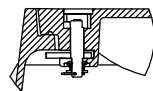



CAM LOCK VIEW



NOTES:

1. VERIFY SLOTTED FRAMES ARE THOROUGHLY FILLED IN WITH MORTAR FOR EFFICIENT INTERACTION WITH IRON AND STRUCTURE.
2. VERIFY BEDDING MORTAR IS NOT IN CONTACT WITH AREA UNDER LID FLANGE THAT WILL INTERFERE WITH CAMLOCK.
3. INSTALL PLUG IN LOCK HOLE TO KEEP LOCK FREE OF FOREIGN MATERIAL.
4. 24 INCH MANHOLE LID IS FITTED WITH AN INFILTRATION PLUG LOCATED IN THE HINGE HOUSING OF THE FRAME. VERIFY PLUG IS PROPERLY INSTALLED BEFORE INSTALLING THE FRAME.
5. REQUIRED ON ALL ARTERIALS, COLLECTORS OR ANY TIME THAT THE IRON WILL BE WITHIN THE TRAVEL LANE.
6. LID SHALL BE MARKED "WASTEWATER".
7. CITY OF KIRKLAND LOGO REQUIRED.
8. LID MUST BE COVERED WITH TAR PAPER BEFORE OVERLAY.
9. PRODUCT SUPPLIED BY EAST JORDAN IRON WORKS, OR APPROVED EQUAL.
10. FRAME AND COVER SHALL BE H-20 LOADING RATED IF INSTALLED IN ROADWAY.

CITY OF KIRKLAND	
PLAN NO. CK-S.16A	
	MODIFIED 24" MANHOLE FRAME W/ LOCKING COVER