



The Kirklander

2026 Issue 1

- »Events & Activities
- »Safety Tips
- »Construction Updates
- »Deals & Discounts
- »Meet the City Council
- »And More!

The official newsletter of the City of Kirkland

There's Something for Everyone in This Issue of *The Kirklander*

By DAVID WOLBRECHT
City Manager's Office

Welcome to *The Kirklander*, the City's twice-yearly newsletter delivered to everyone in Kirkland. This first issue of 2026 is jam-packed with useful resources, informative stories, and updates on major happenings. More of a screen person? You can also read the full issue online at www.kirklandwa.gov/Kirklander.

Whether you're reading on a park bench or your kitchen table, here's what you'll find in this issue of *The Kirklander*.

On page 2, meet your City Council, learn about Council meetings, and learn how to contact them. Get a heads-up on the big topics they'll tackle this year, and learn how to chat in an easy setting at the new Conversations with Council event series.

On page 3, pick from the "11 ways to plug in" for what works best for you, check out Kirkland Cares to see if your household qualifies to save on utilities and other City fees, and step up for the Green Power Challenge.

On page 4, get a quick overview of the big infrastructure investments you've seen around town, including safer crossings, corridor upgrades, and key trail and neighborhood connections.

On page 5, get info on e-bike rules, sign up for your pet's license, learn how Kirkland Police identified a 40-year cold case victim, and get an update on

community concerns about ICE.

On pages 6 and 7, treat this as your fridge-worthy event planner, with seasonal events, family-friendly happenings, and some save-the-dates in one place.

On page 8, get an overview of how Fire Prop 1 was completed on time and under budget, and get the latest on the Kraken Iceplex and new City community center.

On page 9, find resources, programs, and partners to level up your business. Plus three things to know about the NE 85th Street Station Area.

On page 10, get some environmental sustainability tips from natural yard care to the simple habits that prevent sewer backups. Check out rebates for trees, disconnected downspouts, and heat pumps.

On page 11, find easy ways to volunteer and how the Senior Council is supporting Kirkland's 50+ community.

On page 12, learn about world-class art installations available to experience for free in downtown, the latest on the Kirkland Green Loop, and how to save time and money on an accessory dwelling unit.

So, whether you're a lifelong Kirkland local or new to the neighborhood, *The Kirklander* has something for you. Thank you for being a part of our amazing community — thank you for being a Kirklander!



A family enjoying the Marina Park Dock. Photo courtesy of Chris Neir.

Добро пожаловать	WELCOME	willkommen	歓迎
maligayang pagdating	欢迎	bienvenido	خوش آمدی
مرحبا بكم	환영합니다	bienvenue	स्वागत
			chào mừng

English

- News from the City of Kirkland
- Information from Kirkland City Council
- Upcoming community events
- To translate, find the green drop down in the top right corner of the website.

Portuguese (Brazil)

- Notícias da cidade de Kirkland
- Informações sobre a Prefeitura de Kirkland (Kirkland City Council)
- Próximos eventos da comunidade
- Para traduzir, localize o menu suspenso verde no canto superior direito da página.

Vietnamese

- Tin tức từ Thành Phố Kirkland
- Thông tin từ Hội đồng thành phố Kirkland
- Sự kiện cộng đồng sắp diễn ra
- Để dịch, tìm menu xổ xuống màu xanh lá ở góc trên bên phải của trang web.

Russian

- Новости от городских властей г. Киркланда
- Информация от городского совета Киркланда (Kirkland City Council)
- Предстоящие общественные мероприятия
- Для перевода найдите зеленое раскрывающееся меню в правом верхнем углу страницы.

Spanish

- Novedades de la ciudad de Kirkland
- Información del Ayuntamiento de Kirkland (Kirkland City Council)
- Próximos eventos comunitarios
- Para traducir, ubique el menú en el botón verde en la esquina superior derecha de la página web.

Korean

- 커클랜드 시의 뉴스
- Kirkland 시의회 정보
- 다가올 지역 사회 행사들
- 내용을 번역하려면 오른쪽 상단에 있는 초록색 드롭다운 메뉴를 클릭하세요.

Simplified Chinese

- 来自柯克兰市的消息
- Kirkland 市政委员会(Kirkland City Council)消息
- 即将开始的社区活动
- 如需翻译,请找到网页右上角的绿色下拉菜单

Read this online at:
kirklandwa.gov/Kirklander



City of Kirkland
123 5th Ave
Kirkland, WA 98033



Meet Your Kirkland City Council

Kirkland's City Council is a seven-member body elected at large by the community. Councilmembers serve four-year terms and are responsible for setting policy, adopting ordinances, and guiding the strategic vision of the city. Every two years, the Council selects a Mayor and Deputy Mayor from among its members. Together, they work closely with the City Manager to ensure that City services run smoothly and align with community values.



Kelli Curtis, Mayor
kcurtis@kirklandwa.gov



Neal Black, Deputy Mayor
nblack@kirklandwa.gov



Jay Arnold, Councilmember
jarnold@kirklandwa.gov



Amy Falcone, Councilmember
afalcone@kirklandwa.gov



Jon Pascal, Councilmember
jpascal@kirklandwa.gov



Shilpa Prem, Councilmember
prems@kirklandwa.gov



John Tymczyszyn, Councilmember
johnt@kirklandwa.gov

Coming Up at Council This Year

By KURT TRIPLET
City Manager

Every two years, the City Council adopts a City Work Program, which is a list of priority initiatives that go beyond day-to-day operations. The 2025–2026 Work Program keeps attention on housing, safety, mobility, and public services. Although much has been done on the Work Program over the last year, there's still more ahead.

A top priority of the Council is catalyzing redevelopment around the future NE 85th Street Station Area and advancing the Station Area Plan's vision for a mixed-use district with parks, jobs, and housing. You can read more about this later in this issue. Council will also adopt updated Planning and Transportation Work Programs to guide progress on Kirkland's long-range goals and strengthen transit.

For community safety, the City has completed voter-approved

Fire Proposition 1 investments, including renovations at Fire Stations 26 and 21 and a new training prop near Fire Station 24. Council will also continue its review of how the criminal justice system impacts Kirkland, including victim advocacy and municipal court services.

Council is advancing work that supports Kirkland being a welcoming and belonging place for all. In December 2025, Council adopted the City's first Homelessness Action Plan. The City celebrated the successful launch of Health Through Housing project in Kirkland, now named Sheila Stanton Place to honor Sheila Stanton, a Kirkland resident and humanitarian champion. Council will also be updating Kirkland's Diversity, Equity, Inclusion, and Belonging 5-Year Roadmap in 2026.

Beyond these, the City has completed major multimodal transportation projects at 100th and 124th to make getting around Kirkland safer whether you bike, bus, walk, roll, or drive. In 2026, the City's focus will turn to major renovations and expansions to the Public Works Maintenance Center to support our crews who work tirelessly to serve the community. City Departments are now developing their proposals for a sustainable 2027–2028 budget that retains Kirkland's AAA credit rating. Council will adopt the next budget and City Work Program later this fall. Finally, Council has directed staff to upgrade the Peter Kirk Pool and refine options to cover the the pool for year-round operations.

Stay up to date on what's coming to City Council by subscribing to the City's weekly email newsletter and podcast, *This Week in Kirkland* at www.kirklandwa.gov/communications.



Conversations with Council

By LUANA HANCOCK
City Manager's Office

The City has launched a new community engagement pilot program, *Conversations with Council*, designed to create more informal, accessible opportunities for residents to connect directly with City Councilmembers outside of formal meetings.

The *Conversations with Council* events offer casual, drop-in gatherings at locations around Kirkland where community members can share ideas, ask questions, and get to know their elected officials through small group or one-on-one conversations. There is no agenda, presentation, or prepared remarks. You can come with your topic to chat about, or just let the conversation unfold how it will.

Learn more about the program and when and where the next one is happening by visiting www.kirklandwa.gov/Conversations.

Hope to see you there!



Form of Government

Kirkland operates under the "council-manager" form of government. This means all legislative, policymaking, and budgetary powers are vested in the City Council. The Council employs a professionally-trained public administrator, the City Manager, to carry out Council's policies and budget direction.

In the "council-manager" form of government, Council selects the Mayor. The Mayor's responsibilities are primarily to preside at council meetings and act as head of the city for ceremonial purposes. The Mayor votes as a councilmember and does not have any veto power.

Council Meetings

City Council generally meets on the first and third Tuesdays of the month. The City Council receives briefings, deliberates, and votes on a wide range of policies, programs, and regulations.

Council meetings are open to the public and offer a chance for community members to speak directly to the Council and stay informed on City business. Meetings are streamed live and archived online for easy access.



Learn more about the City Council, how to contact them, how to attend Council meetings, and view Council meeting documents at www.kirklandwa.gov/Council.

Contact City Council

Want to share your thoughts with the Kirkland City Council? There are lots of ways to connect. You can speak during the "Items from the Audience" portion of a City Council meeting either in person or via Zoom. You can also email the Council at citycouncil@kirklandwa.gov or submit a request through the OurKirkland portal under "Contact City Council." Councilmembers value meeting with community members.

11 Easy Ways to Plug In

By DAVID WOLBRECHT
City Manager's Office

Your City of Kirkland government is here for you. City staff work hard to make it easy for you to stay informed, ask questions, and share feedback. In addition to this twice-a-year printed newsletter we call *The Kirklander*, there's a variety of ways to plug into the City's systems of engagement:

1. **Sign up for weekly news, event, program, and project updates** at www.kirklandwa.gov/Communications. Get an email delivered straight to your inbox every Thursday and stay in the know for what's happening 'This Week in Kirkland.'
2. **Listen to our weekly podcast** for timely topics and noteworthy news, delivered straight to your ears at www.kirklandwa.gov/podcast.
3. **Attend a City Council meeting**. They're public, streamed live, and archived online: www.kirklandwa.gov/Council.
4. **For urgent street issues**, call 425-587-3900 to reach our Public Works Maintenance Center. On-call support available 24/7.
5. **Subscribe to emergency alerts**. Visit kirklandwa.gov/BeInformed to receive safety updates by text, phone, or email.

6. **Need help with recycling?** Contact our Recycling Hotline at 425-587-3812 or recycle@kirklandwa.gov.
7. **Notice something in your neighborhood that needs attention?** Use Our Kirkland, our easy online service portal. Whether it's reporting a pothole, requesting a tree inspection, or sharing an idea, you can submit issues 24/7 at www.kirklandwa.gov/OurKirkland.

8. **Seniors can easily access essential services** on our one-click webpage. Visit www.kirklandwa.gov/Seniors.

9. **Got questions?** You can submit them to the City's pilot program, Rep'd, at repd.us/kirkland. A City staff member will record a brief video answering your question.

10. **Follow us on socials**. We're on Facebook, Instagram, Nextdoor, X, and YouTube.

11. **Join your neighborhood association**. Visit kirklandwa.gov/neighborhoods to find yours.

So whether you want to lend your voice or just stay up to date, thank you for being a part of local democracy in action! Your engagement helps the Kirkland community grow stronger, smarter, and more connected.



Take the **WM Recycle Right Pledge** and **enter to win one FREE month of garbage service!**



You Might Be Able To Save on Your Utility Bills and Other Fees

By QUINN GLEBE
Finance & Administration

The Puget Sound region has seen an increase in cost of living over the last several years. To help ease the financial burden on low-income families, the City offers a Kirkland Cares Low-Income Support Program. The program provides discounts on utility rates, pet licenses, business licenses, annual vehicle registration, and other City services and charges for Kirkland residents who earn at or below 80% Area Media Income (AMI) for the King County area. For example, a family of two

would qualify for discounts if the household made \$96,950 a year or less, while a family of four would qualify if the household made \$121,150 a year or less.

City staff are ready to help you apply either online or in person at City Hall. The goal is to assist more households, regardless of age, housing type, and health or disability status, so reach out today if you have questions.

Find more information about the program by visiting www.kirklandwa.gov/KirklandCares.



Who's Up for the Green Power Challenge?

By DAVID BARNES
Planning & Building Department

Interested in supporting renewable energy? The City of Kirkland and Puget Sound Energy are teaming up for the Kirkland Green Power Challenge, running now through December 2026.

PSE's Green Power program offers a simple and affordable way to match up to 100% of your electricity use with renewable energy like wind and solar from right here in the West. When you enroll, PSE will purchase renewable energy from independent resources on your behalf. Easily reduce your environmental impact while growing demand for more renewable energy, starting at just \$4 per month.

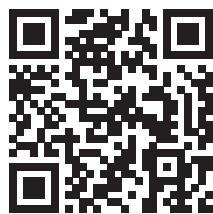
What is the Green Power Challenge? This community effort encourages Kirkland residents to support clean, renewable energy by matching their electricity use with 100%

wind and solar power. Today, more than 4,700 Kirkland customers participate. Our goal is to reach 5,000 by the end of 2026.

Who benefits? If the community meets this goal, Puget Sound Energy will award the City \$15,000 to install a solar array. The City may also choose to pass the award to a local nonprofit to install or expand their own solar system. Either way, everybody wins because the result is more renewable energy and a stronger, more resilient electric grid.

Visit pse.com/Kirkland to learn more and enroll. Signing up is quick, and every new participant moves us closer to a cleaner, healthier community powered by renewable energy.

Thanks for doing what you can to help our environment!



Kirkland Teen Union Building Where Teens Belong

What is KTUB?

KTUB offers safe, fun, and free activities, as well as space for middle schoolers and high schoolers to hang out after school.

Getting There

KTUB provides free after-school transportation from local middle schools:

- Finn Hill Middle School: Monday & Thursday
- Kamiakin Middle School: Tuesday & Friday

Extra Support

Free on-site services and resources provided by Youth Eastside Services (YES) and 4 Tomorrow.



348 Kirkland Ave
425-587-3370
www.kirklandwa.gov/KTUB

The Kirklander

2026 | Issue 1

The Official Newsletter of the City of Kirkland
Published twice a year

Executive Editor: Jim Lopez
Deputy City Manager for External Affairs

Managing Editor & Layout: David Wolbrecht
Communications Program Manager

Copy Editor: Stephanie Topacio Long
Digital Content Specialist

Questions & Comments: communications@kirklandwa.gov

Your Gateway to Kirkland
LOCAL BUSINESSES

And That's a Wrap!

By ROSALIE WESSELS

Public Works, Capital Improvement Program

The City's Public Works Capital Improvement Program continues to deliver projects that increase safety, preserve previous investments, and prepare for the future needs of residents, businesses, and visitors.

2025 saw the completion of five largescale projects that have been years in the making. Thank you for your patience as these investments were constructed. Just like when you're redoing your kitchen, no one likes living with a renovation. But we sure do love the investments when they're done!



Juanita Drive Corridor Improvements optimized traffic flow at four intersections, created sidewalks and buffered bicycle lanes, and installed a rapid flashing beacon at a new crosswalk.



The City **repaved Central Way** from Market Street to 6th St, creating a smooth driving surface that welcomes all to downtown Kirkland. Two additional streets, 18th Avenue and 116th Avenue NE were also repaved by the annual Overlay Program, which includes Street Levy funds.



Kirkland created its first **Pedestrian Scramble**, converting the intersection at Lake Street and Kirkland Way into an all-way crossing during the pedestrian phase, and a traditional intersection during the vehicle phase.

Here's some of what we're working on now:



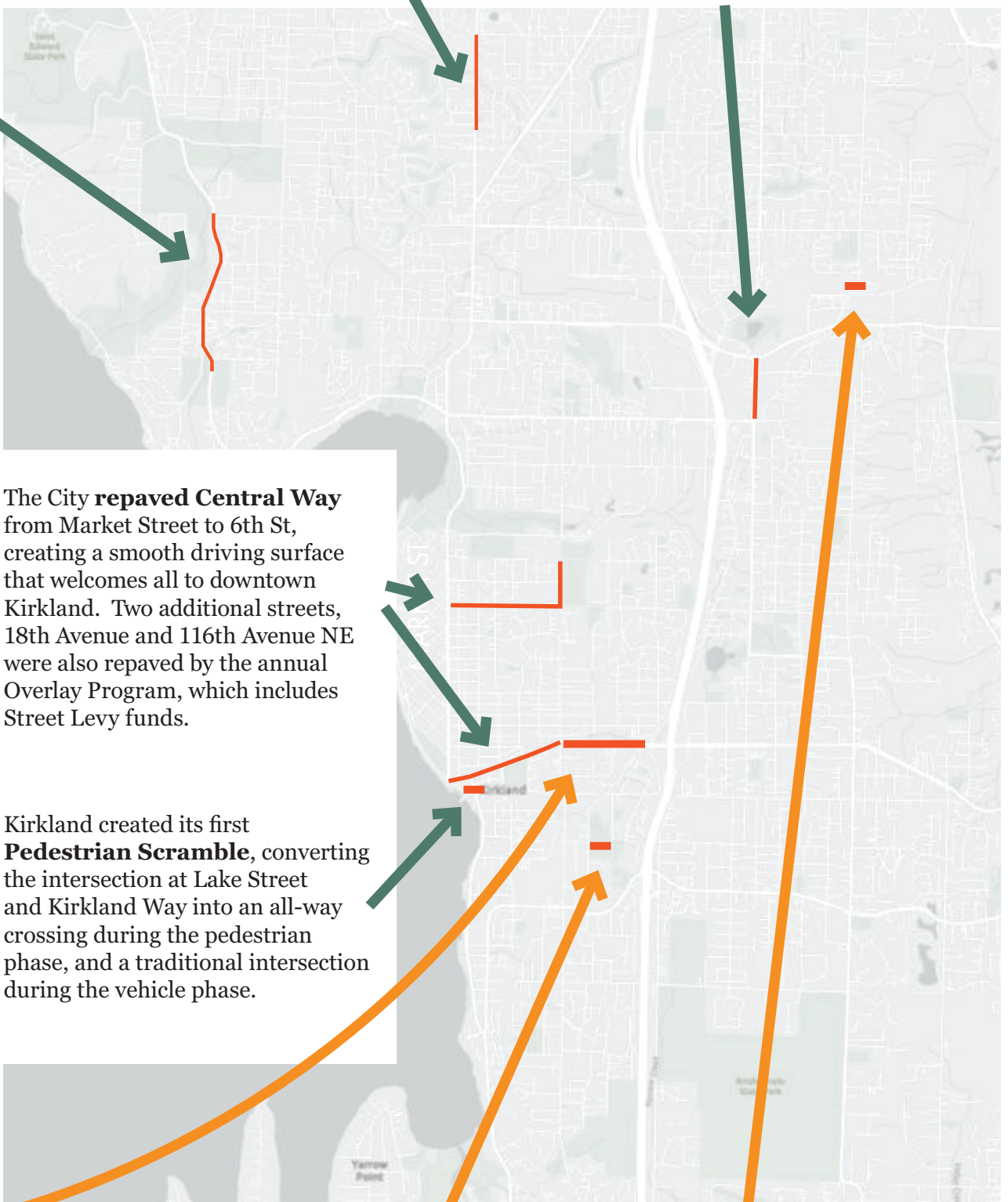
NE 85th Street Shared-Use Pathway will enhance walking and biking access by building a new shared-use path along the south side of NE 85th Street, adding pedestrian lighting, and constructing a pedestrian bridge over the Cross Kirkland Corridor to better connect downtown Kirkland to I-405 transit.



Everest Restroom Replacement will improve park access and capacity by demolishing the aging restroom and building a modern, ADA-accessible facility with more stalls, family-style gender-neutral restrooms, durable materials, and associated utility, paving, and landscaping upgrades.



124th Avenue NE Improvements enhanced connectivity by widening the roadway, adding more lighting and a HAWK crossing, widening the sidewalks, enhancing the transit stops, creating buffered bicycle lanes, and upgrading the water and sewer mains.



CKC to Eastrail Crossing at Slater Avenue NE/132nd Avenue NE will improve trail connectivity and safety by building a signalized pedestrian-and-bicycle crossing with a refuge island, adding buffered bike lanes, and upgrading turning movements at the nearby NE 124th Street intersection.



Get all the latest construction project updates at www.kirklandwa.gov/construction.

E-Bikes: What's Allowed Where

By ANGELA BROWN
Public Information Officer

E-bikes are a popular way to get around Kirkland, especially for younger riders. But not every “e-bike” is actually an e-bike, and the rules can change depending on what you are riding and where you are riding it. Here are three helpful things to know before you ride.

1) Some “e-bikes” are really electric motorcycles. A legal e-bike always has pedals you can use to move the bike. In Washington, an e-bike’s motor assistance tops out at 20 mph (or up to 28 mph when the rider is pedaling, for certain models), and the motor power does not exceed 750 watts. If a two-wheeler does not have operable pedals, exceeds 750 watts, or can go over 28 mph with motor help, it is treated as a motorcycle and different laws apply.

2) E-bikes come in three classes, and Class 3 has extra rules. In general, e-bikes can be used in most places traditional bikes are allowed, but the class matters:

Class 1: Pedal-assist up to 20 mph.

Class 2: Can move with electric power even if you are not pedaling, up to 20 mph.

Class 3: Pedal-assist up to 28 mph, but the rider must be 16 or older. Class 3 e-bikes are not allowed on sidewalks or shared-use paths and must be ridden on the road.

3) Trail and park rules include a 15 mph speed limit. If you ride the Cross Kirkland Corridor (CKC), e-bikes are allowed, but other motorized vehicles are prohibited (with limited exceptions). Everyone must follow the 15 mph speed limit.

In Kirkland parks, e-bikes may be used only

Type of Cycle	Max Assisted Speed	Has Throttle	Operable Pedals	Age restriction
Class 1 e-bike	20 mph	✗	✓	None
Class 2 e-bike	20 mph	✓	✓	None
Class 3 e-bike	28 mph	✗**	✓	16+
e-motorcycle*	>28 mph	✓	Varies	16+ and have valid WA license with motorcycle endorsement to ride on roadway

* Unlicensed and unregistered e-motorcycles may include e-dirt bikes and must follow the rules outlined for off-road recreation vehicles.

** Some class 3 e-bikes have a throttle, while most do not.

on designated park pathways and bicycle paths, and riders must also follow the 15 mph speed limit. E-bikes and other motorized vehicles are not allowed on park lawn areas.

Wherever you ride, yield to people walking, obey posted speed limits, use lights and reflectors, and consider a well-fitting helmet. If you see someone riding an e-bike, e-scooter, or e-motorcycle in an unsafe or illegal way as it is happening, call 911.

For more information or to get questions answered, please visit www.kirklandwa.gov/ebikes.



How Kirkland Police Identified a 1985 Cold Case Victim

By ANGELA BROWN
Public Information Officer

On December 8, 1985, the body of an unidentified man was discovered in a sheltered area surrounded by blackberry bushes in the 10100 block of NE Points Drive in Kirkland. He was wrapped in blankets and layers of plastic.

At the time, the King County Medical Examiner determined that the man was inadequately clothed for the severe winter conditions, which included snow and unusually cold temperatures. His death was attributed to hypothermia and classified as probably accidental. No identification was found on his person or among his belongings.

For decades, detectives pursued numerous leads and tips, but the man’s identity remained a mystery. The case saw a significant breakthrough in 2019, when the man’s remains were exhumed with the assistance of Dr. Kathy Taylor, forensic anthropologist for King County and the State of Washington. The exhumation enabled investigators to obtain a

DNA profile from a femur bone. The profile was uploaded to the National Missing and Unidentified Persons System (NamUs), but no immediate matches were found.

In August 2025, investigators turned to genetic genealogy as a new investigative tool. The analysis identified potential family members and led detectives to a man named Gregory, believed to be the decedent’s brother. Kirkland Police obtained a DNA sample from Gregory, which was processed by the Washington State Patrol Crime Lab and sent to the University of North Texas for formal comparison.

On December 22, 2025, DNA analysis confirmed the familial match. After 40 years, the King County Medical Examiner and Kirkland Police Department have positively identified the man as William D. Horn.

If you or someone you know are interested in a career in law enforcement, visit www.kirklandwa.gov/PoliceJobs.



CITY OF KIRKLAND WASHINGTON

ARE YOU PREPARED?

- ✓ Make a Plan
- ✓ Build a Kit
- ✓ Be Informed

Kirkland Emergency Management offers information for you to prepare yourself, your family, and your community!

Find out more about personal preparedness, sign up for alerts, and class offerings by visiting:

www.kirklandwa.gov/Prepare

Community Concerns About ICE

By DAVID WOLBRECHT
City Manager’s Office

There is growing concern in our community about the presence of Immigration and Customs Enforcement (ICE) in the region.

What the City does not control: Federal agencies operate under federal authority. The City does not direct federal operations and does not receive advance notice of federal activity.

What the City controls: Kirkland Police and other staff do not enforce civil federal immigration law. Kirkland follows Washington state’s Keep Washington Working Act, which limits state and local law enforcement involvement in civil immigration enforcement and establishes clear boundaries

around cooperation and information sharing. Any request for City-held information must go through legal review.

What we are doing: The Kirkland Police Department’s job is to uphold Washington State laws and Kirkland’s local ordinances. Their priority is public safety. That means making sure everyone, regardless of their immigration status, feels safe calling them in an emergency, reporting a crime, or speaking with an officer. When you call 911, you will be contacting the local dispatch center, not immigration authorities.

For more information, please visit www.kirklandwa.gov/KnowYourRights.



They deserve the bling.

Add some hardware to their collar.

Explore **KIRKLAND**

Check Out Events



REC n ROLL

FRIDAYS
10am - 2pm
AGES 5-13

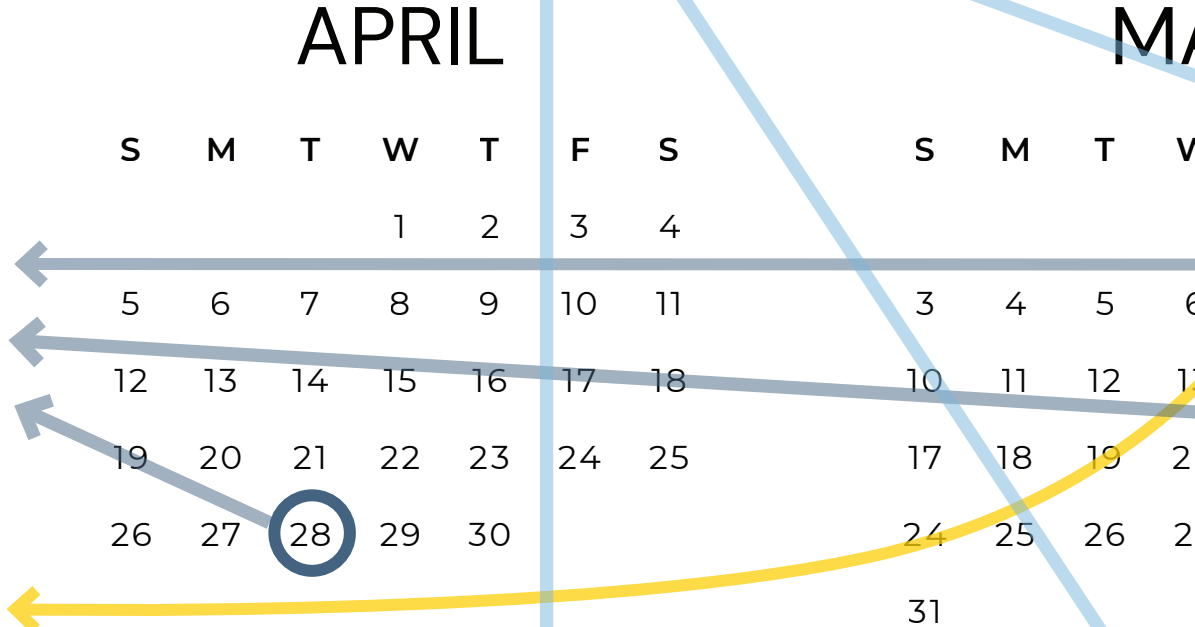



Junk the Truck




- casual, drop-in gathering
- share ideas & ask questions
- get to know your local elected officials

CONVERSATIONS WITH COUNCIL



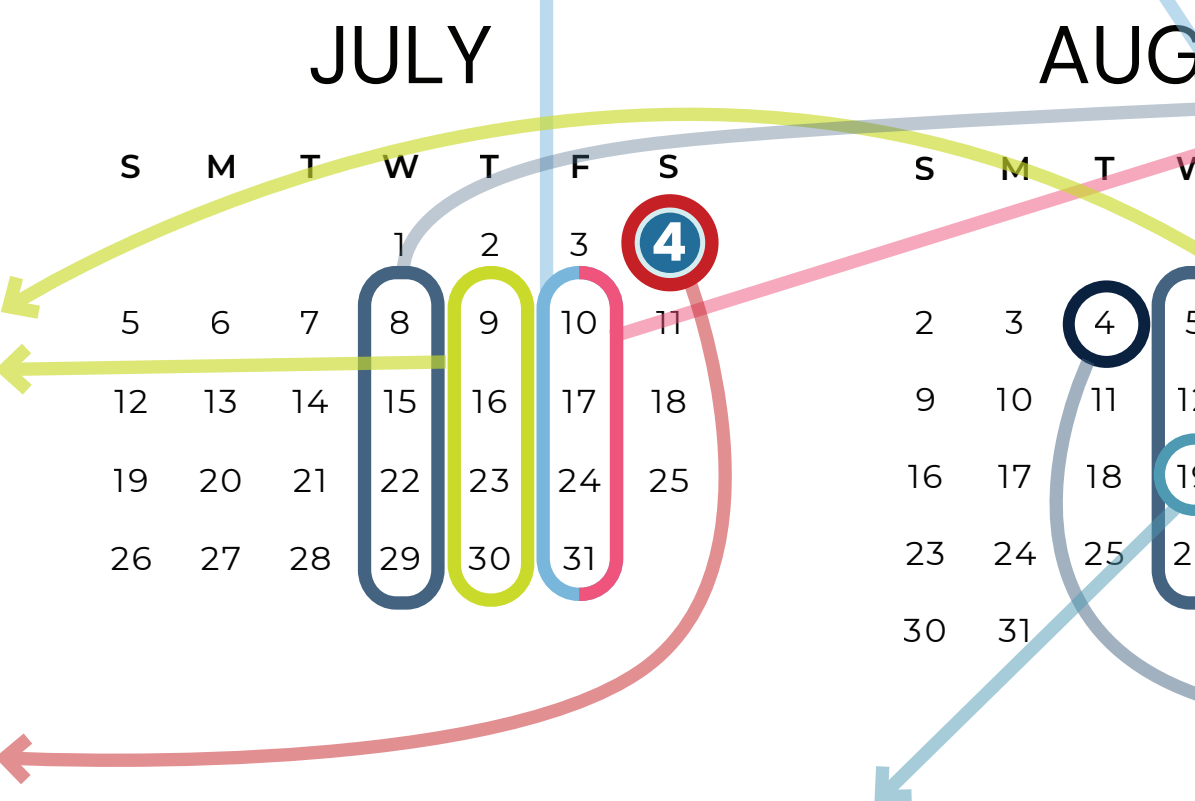
THIS NIGHT



State of the City & Community Appreciation Night

IN KIRKLAND
ALL TOGETHER NOW

Thursday, May 7
5 - 8 p.m.
RSVP at www.kirklandwa.gov/volunteer



FREE Sprinkler Park FUN!

Thursdays
July 9 - August 6
11AM - 2PM

Lee Johnson Field
at Peter Kirk Park




celebrate KIRKLAND

Where we come together!

Saturday July 4th, 2026 **250TH** HAPPY BIRTHDAY AMERICA

10:30AM - Kids Pavillion
11:30AM - Kids Parade • 12PM - Main Parade
DOWNTOWN BUSINESS DISTRICT

Everyone is welcome, let's keep the tradition going!
For more information on event details, parade entry and volunteering, visit kirklandwa.gov/CelebrateKirkland

International Night Market

FREE TO ATTEND!

amazon




26th Ju League World Series



Aug. 1,



SENIOR ART SHOW

FREE EVENT

CREATIVITY IS AGELESS
16TH ANNUAL SENIOR ART SHOW
JUNE 5-12

The Kirkland Initiative

A PREMIERE CITY LEADERSHIP PROGRAM

We are looking for Kirkland residents who want to change the world, one local leader at a time.



Apply today!

www.kirklandwa.gov/kirklandinitiative

An Opportunity for All in Kirkland
Join the free 8-week, 3-hour course

- Network with neighbors and City officials and staff
- Learn Kirkland's civic engagement process and policies
- Gain leadership skills that will last a lifetime

MAY

V	T	F	S
		1	2
3	4	5	6
7	8	9	10
11	12	13	14
15	16	17	18
19	20	21	22
23	24	25	26
27	28	29	30

JUNE

S	M	T	W	T	F	S
	1	2	3	4	5	6
7	8	9	10	11	12	13
14	15	16	17	18	19	20
21	22	23	24	25	26	27
28	29	30				

JUANITA
Fresh Local
FRIDAY MARKET
Since 2007

Fridays, 3 PM - 7 PM
June 5 - September 25*

Juanita Beach Park
9703 NE Juanita Drive
kirklandwa.gov/JuanitaFridayMarket

*no market on June 19 or July 3

JULY

V	T	F	S
			1
2	3	4	5
6	7	8	9
10	11	12	13
14	15	16	17
18	19	20	21
22	23	24	25
26	27	28	29

SEPTEMBER

S	M	T	W	T	F	S
		1	2	3	4	5
6	7	8	9	10	11	12
13	14	15	16	17	18	19
20	21	22	23	24	25	26
27	28	29	30			

The Kirkland Downtown Association Presents

MARINA PARK
Market
KIRKLAND WEDNESDAY
a KDA Event

See Spot Splash

10AM - 3PM
September 12, 2026
Peter Kirk Pool
340 Kirkland Ave

kirklandwa.gov/CommunityBuildingEvents



National Night Out
August 4

SAVE THE DATE
CADET CAR SHOW
09.12.2026

OUTDOOR SUMMER MOVIES

BRING A BLANKET OR LAWN CHAIR AND ENJOY A FREE DOUBLE FEATURE ON OUR GIANT LED MOVIE SCREEN. MOVIES START AT 6PM WITH THE SECOND MOVIE STARTING IMMEDIATELY AFTER THE FIRST CONCLUDES.

SATURDAY, SEPTEMBER 19

CITY HALL 4ALL

SAVE THE DATE!
For more information, visit
www.kirklandwa.gov/CityHallForAll

FREE EVENT
KIRKLAND CITY HALL
123 5TH AVE.

Fire Prop 1 Investments Delivered On Time and Under Budget

By ANGELA BROWN
Public Information Officer

Five years after voters overwhelmingly approved Fire Proposition 1, the City of Kirkland has completed the projects and staffing funded by the voter-approved levy - meeting its commitments to improve emergency response times and protect firefighter health and safety.

Approved by more than 71 percent of voters in November 2020, Fire Prop 1 was designed to address critical needs facing the Fire Department, including aging facilities, response-time challenges, firefighter safety concerns, and preparedness for large-scale emergencies such as pandemics. Fire Prop 1 funded a comprehensive set of improvements that are now complete, including:

Staffing Enhancements: The hiring of 20 additional firefighter/EMTs, improving daily response times across the city and providing operational resilience during emergencies.

Pandemic Preparedness: The creation of a dedicated stockpile of personal protective equipment (PPE) to ensure continuity of emergency services during public health crises.

Fire Station Improvements:

- Replacement and relocation of Fire Station 27 to the eastern side of I-405 in Totem Lake.
- Renovation and modernization of Fire Stations 21 (Forbes Creek), 22 (Houghton), and 26 (North Rose Hill), which were all originally built before modern safety, seismic, and infrastructure standards.

Firefighter Health and Safety Upgrades: Station designs now reduce carcinogen exposure through features such

as negative-pressure gear storage rooms and improved diesel exhaust capture systems, helping limit long-term health risks.

Seismic and Infrastructure Upgrades: Reinforced station construction to meet modern safety standards and ensure operational readiness during earthquakes and other emergencies.

The success of Fire Prop 1 was rooted in extensive community involvement. In 2019, the City Council convened a Community Safety Advisory Group comprised of Kirkland residents, business owners, and youth and senior council representatives. Over five months of in-depth meetings, the group developed recommendations that directly shaped the ballot measure, concluding its work just days before the onset of the COVID-19 pandemic.

With Fire Prop 1 now fully implemented, Kirkland residents are benefiting from faster emergency response times, safer and more resilient fire stations, and improved long-term health protections for firefighters. These investments will serve the community for decades to come.

The City of Kirkland extends its sincere thanks to the community members who supported Fire Prop 1, the Community Safety Advisory Group, whose early work helped shape the measure, and the firefighters and staff who worked together to see it through.

For more information about the Fire & Emergency Medical Services 2020 Ballot Measure, visit www.kirklandwa.gov/fireballot2020.



The Latest on the New Kraken Iceplex and Community Center

By JEN DAVIS HAYES
City Manager's Office

The outlook for Kirkland's Kraken Iceplex and Community Center remains promising. The Seattle Kraken is working to secure necessary financing to pay for and build the new facility at the former Houghton Park & Ride site.

Plans for the project include two NHL-regulation ice rinks, a City-operated community center, a full-service public restaurant, a team store, and space for community programs, events, and activities. Together, these features will create a new, year-round destination for recreation and community life.

This partnership is designed to deliver major public benefits with no new taxes. The agreements establishing the public-private partnership between the Kraken and the City include strong guardrails to protect the City and the public for the full length of the partnership, including clear responsibilities, performance expectations, and long-term safeguards. The City will also own the facility at the end of the 34-year lease, unless the City exercises its option to purchase the facility earlier and lease it back to the Kraken.

For residents, the project will create a modern community and recreation center, with flexible

rooms for classes and gatherings, along with fitness space. Every Kirkland resident will receive two hours of free open skate each month to support broad public access. The Kraken's One Roof Foundation will also offer discounted programs for low-income and vulnerable community members, helping more families take part. The site is expected to host community events, youth programs, and seasonal activities throughout the year, and it will bring a full-service restaurant to an area with few dining choices.

The Iceplex is also expected to boost Kirkland's economy, with an estimated \$7 million each year in economic activity for Kirkland and the Eastside. It will support local

jobs, bring new visitors, and help nearby businesses. The project can also catalyze future growth in the NE 85th Street Station Area, in line with the City's long-term vision for a vibrant, walkable, transit-friendly district.

This project reflects Kirkland's strong history of youth and women's sports. The facility could become a home for the Seattle Torrent, which would expand professional women's sports in Kirkland and build on the City's legacy, including hosting the Junior League Softball World Series.

The Kraken first reached out to the City in late 2023, and the City Council adopted Resolution R-5645 to set a framework for

negotiations in September 2024. Throughout 2024 and 2025, the City and Kraken continued public outreach, Council briefings, design work, and negotiations. The City Council approved the Agreement to Lease in December 2025 setting the stage for the public-private partnership. Permit applications were submitted in early 2026, and construction could begin in late spring 2026. More outreach is planned in 2026 and 2027, and the facility is expected to open in fall 2027.

We are excited to see you on the ice! Learn more about the project on the City's website: www.kirklandwa.gov/Iceplex.



Got Business? We Can Help!

By JEN DAVIS HAYES
City Manager's Office

Have you dreamed about starting a business? Looking to grow or move your business to Kirkland? Our Economic Development team helps entrepreneurs access the programs and resources needed to succeed. From no-cost, one-on-one business advising to topical workshops and monthly co-working, you will find a supportive business community here in Kirkland. As the Business Liaisons to the City, we also can help navigate permits and development processes, provide site selection assistance, connect with sustainability programs, or leverage events and tourism to attract new customers.

Want support? Contact Christian Lash at 425-587-3266 or clash@kirklandwa.gov to find the right programs and partners for you.



Economic Development Manager Jen Davis Hayes (left) and Special Projects Coordinator Christian Lash (right)

By the Numbers: Kirkland's Business Landscape



Resident Population
91K
(Census 2023)



Daytime Population
115.4K
(STI: Workplace 2024)

BUSINESSES

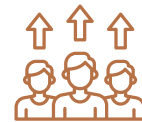


7,261
Total Businesses
in 2025



1,681
New Businesses
in 2025

WORKFORCE



45.7K Employees

Data from Placer.ai and Department of Revenue

Your Business Might Need to Compost Under New State Law

By GENA JAIN
Public Works

The State of Washington recently passed Organics Management Laws (OML) that may impact your business. These laws require many businesses to separate their organic material waste (compostable materials) from their garbage to reduce greenhouse gas emissions. Organic material waste largely includes all food scraps and yard debris.

All entities in Kirkland generating 96 gallons or more of organic material waste per week must separate compostable materials and enroll in a compost collection service, donate excess food, or self-haul organics materials

to comply with Washington's Organics Management Law by 2026.

Setting up compost service is easy to do. Contact either the City of Kirkland Recycling hotline at recycle@kirklandwa.gov or 425-587-3812 for more information on the City's program or Cedar Grove Composting for information on dumpster collection. Starting compost service may also save your business money by reducing your garbage bill.

For more information on the state's Organics Management Laws, visit ecology.wa.gov/OM-law-businesses



EXCITING CHANGES AHEAD FOR HOUGHTON PARK & PLAY

Your favorite features are moving this year... not disappearing!

Pickleball → Peter Kirk Park

Skate Park → Peter Kirk Park

Community Gardens → Rose Hill Meadows



Learn more at kirklandwa.gov/Houghton-Park-and-Play

3 Things to Know About Kirkland's Station Area

By JEN DAVIS HAYES
City Manager's Office

You've likely driven through the major construction on your way to Costco, Redmond, or favorite shop along NE 85th Street.

While the Washington State Department of Transportation (WSDOT) has been focused on strategic opportunities to leverage this once-in-a-generation opportunity this project presents. Here are three key things to know about the NE 85th Street Station Area and what the City is doing now to move the community's vision forward.

1) We have a plan in place built around regional transit. City Council adopted the NE 85th Street Station Area Plan in 2022 to support more housing and jobs near the future Sound Transit Stride Bus Rapid Transit (BRT) station at the I-405 interchange. When Stride opens, it will connect Kirkland to key destinations along the I-405 corridor, Sound Transit Link light rail, and other regional transit options.

2) The vision is a walkable district with everyday amenities, and the City is working hard to make it happen. The Station Area Plan envisions a vibrant, walkable neighborhood with housing, parks, jobs, and neighborhood-serving retail that's easy to reach on foot, bike, chair, and transit. To move toward that vision, the City increased building heights and overall development capacity along NE 85th Street and created streamlined

permitting tools intended to support private investment. Planned public improvements will also help set the stage, including new green spaces and better walking and biking connections.

3) Market conditions have slowed redevelopment, but the City is actively working to keep momentum moving. Higher construction and financing costs have made redevelopment harder nationwide. Kirkland is feeling that, too. Even so, the City continues to take proactive steps to help redevelopment in the station area happen. Construction is already underway on the NE 85th Street Shared-Use Pathway between 6th Street and I-405, strengthening connections between Downtown Kirkland, the future BRT station, and redevelopment sites east of I-405. The pathway is expected to open this summer.

In parallel, the City began targeted outreach to the real estate and development community in 2025 to promote opportunities and identify barriers. As a result, more than a half-dozen development teams are now exploring potential projects, including housing, retail, and hospitality. The City is also working with prospective applicants and evaluating whether to accelerate regulatory updates originally planned for 2027.

If you know of a property owner, developer, or investor who may be interested, please contact Jen Davis Hayes at jdavishayes@kirklandwa.gov or 425-559-3062.



Future site of the Area's bus-rapid transit station at NE 85th Street and I-405.

Conceptual render of future development of the Station Area.



Learn more about investment opportunities in the Station Area by visiting www.kirklandwa.gov/StationArea.





ELECTRIC EQUIPMENT INITIATIVE



3-year phased approach to attempt sunsetting gas-powered leafblowers by December 31, 2028

KEY GOALS



EQUIPMENT DEMONSTRATIONS

Showcase electric landscaping tools at public events to raise awareness and encourage adoption.

ALL-ELECTRIC PARK PILOT

Maintain one city park using only electric or manual tools to test feasibility and performance.



COMMUNITY & BUSINESS OUTREACH

Engage residents and landscapers to ensure a fair, informed transition to electric equipment.



REGIONAL COORDINATION

Collaborate with nearby cities, agencies, and WA State to support broader electrification and policy alignment.



EQUIPMENT EVALUATION & INFRASTRUCTURE PLANNING

Continue to test electric tools and plan charging solutions to support efficient, city-wide equipment use.



www.kirklandwa.gov/LeafBlowers

4 Natural Yard Care Tips to Help Your Pocketbook and the Planet

By KATE SCHMIETT
Public Works, Surface Water

As our thoughts turn toward spring and summer, what we do in our yards can have a huge impact on the health of our environment. As you start planning for your gardens, consider natural yard care practices to help water quality, species diversity, and more!

What is natural yard care? It's a combination of techniques that gives you a thriving landscape, while minimizing harm to the environment.

Want to get started now? Below are four natural yard care tips you can implement to help your pocketbook and the planet.

1. Build healthy soil. Add compost and mulch to boost plant

health, cut watering needs, and protect water quality.

2. Right plant, right place. Match plants to site conditions, and water deeply but less often.

3. Use fewer chemicals. Pesticides and herbicides can wash into creeks — choose safer alternatives when you can.

4. Go natural on lawns. Use compost/slow-release fertilizer, aerate, and mow high to help roots and reduce runoff.

Winter and early spring are great times to start working on soil health or making a plan for a new drip irrigation system. Check out www.kirklandwa.gov/yardcare for more tips and tricks for a healthy, natural yard this year!



Furnace on the Fritz?

By DAVID BARNES
Planning & Building Department

Energy Smart Eastside has special rebates for residents of Bellevue, Issaquah, Kirkland, Mercer Island, Redmond, and Sammamish. These rebates can be combined with other utility and federal incentives for thousands of dollars in savings on heat pumps. Not sure about heat pumps? **Here are six benefits of heat pumps you might not know.** With a heat pump, you can:

1. Warm and cool your home.
2. Filter indoor air (great for smoke season!).
3. Use efficient, all-electric heating and cooling.

4. Reduce heating bills.
5. Cut greenhouse gas emissions.
6. Enjoy consistent, even temperature.

Want to learn more? The first step is to sign up at energysmarteastside.org and speak to one

of the knowledgeable energy advisors. They'll answer your questions and can let you know if there are any local workshops to learn more about heat pump technology, applicable incentives, and financing. After a workshop, you get a free home assessment to help you consider the installation of the heat pump system that works best for you.



3 Must-Do Actions to Avoid Sewer Backups

By GENA JAIN
Public Works, Solid Waste

When it's time to clean up after a meal, dishes covered with fats, oils, spreads, sauces, dressings, and food scraps may flush down the sink and into our sewer pipes. Letting these items go down the drain can cause nasty sewer backups in your home or neighborhood.

Save your pipes from these! Here are some tips to keep your pipes free of food and devious Fats, Oils, and Greases (FOG):

1. Wipe it. Before washing wipe off excess oil and sauces with a paper towel from pans and dishes and put in the trash. Wipe or scrap food into the compost before rinsing and washing.

2. Screen it. Keep a sink screen/drain screen in the drain when washing your dishes to catch food.

3. Bottle it. Store Fats, Oils, and Greases in a sealed bottle or jar and, when solidified, dispose of it in the trash. You can also dispose of used cooking oil in the used cooking oil collection container located in the North Parking Lot of the North Kirkland Community Center.

Don't Leave Free Money on the Backyard Table

By MARISA ALLISON
Public Works, Surface Water

The City offers rebates to plant trees on your property, and some properties may be eligible for up to \$5,000 in rebates for replacing grass or concrete with native landscaping or installing a rain garden. **Tree rebates** cover up to \$150 per tree, with a maximum rebate of \$500 per property, per year.

Yard Smart rebates help property owners cover the costs of disconnecting downspouts that currently flow into the City stormwater system and redirecting that water into a rain garden or native landscaping. City staff conduct an evaluation of your property and work with

you to determine the best project for you.

The City offers these rebates because trees, rain gardens, and native landscaping are an important part of Green Stormwater Infrastructure, which helps reduce the amount of water the storm system manages. When water hits our roads and rooftops, it flows down storm drains, then to the nearest creek, and eventually to Lake Washington without being filtered or treated. Trees, rain gardens, and native landscaping slowly filter rainwater into the ground that falls on our properties, helping prevent flooding in neighborhoods and creeks.

Thinking of a spring project? Find out how the City's rebates might help!

TREE REBATES

Plant a Tree & Save our Streams

Receive rebates or pre-paid certificates of up to \$500 for planting eligible trees at home!

The more trees we have, the healthier our streams, creeks, and lakes will be.

KirklandWA.gov/TreeRebate

YARD SMART RAIN REWARDS

New Year, New Project?

Get a rebate of up to \$5,000! Help manage rainwater runoff from your property by installing:

- Rain Gardens
- Native Landscaping
- Permeable Pavers

KirklandWA.gov/YardSmart

Senior Council Champions 50+ Community with Advocacy & Action

By SCOTT EMMONS
Kirkland Senior Council

The Kirkland Senior Council (KSC) advocates for the needs and well-being of Kirkland residents aged 50 and older. Through collaboration with the City and community partners, the Council promotes active aging, accessibility, and quality of life for older adults. The KSC's Mission is to recognize and support the value older adults bring to our community by identifying their concerns, advocating for their needs, and developing programs that enhance their health, engagement, and independence. Our Focus Areas for 2025 included:

1. Legislative Action/Local Advocacy/Community Engagement: Strengthen partnerships with local and regional organizations, such as the Bellevue Network on Aging, to represent seniors' interests in policy (e.g., Medicare, Social Security) and community decisions.

2. Community Connection: Offer events such as the annual

Senior Art Show. Save the date for the 2026 Senior Art Show opening on June 5 at Merrill Gardens.

3. Access to Information and Resources: Provide free Senior Education forums (e.g., Universal Design, Fraud Prevention, Medicare), participate in regional transportation coalition, outreach at community events, and resources such as the East King County Resource Guide.

4. Housing Advocacy: Promote affordable, age-friendly housing and universal design to support aging in place.

5. AARP Age-Friendly Kirkland: Explore AARP Age-Friendly Community designation to foster inclusivity, accessibility, and community support for all ages.

A recent highlight of the Kirkland Senior Council's collaborative efforts is our leadership in exploring an Age-Friendly Community designation for the City of Kirkland. The KSC's dedicated committee thoroughly reviewed AARP's requirements, consulted directly with AARP

representatives, and prepared a comprehensive draft plan to align Kirkland with the program's standards. The KSC Executive Committee met with the Mayor and Deputy Mayor to present our findings and request their support for a formal proclamation, which was enthusiastically endorsed. In early August 2025, the Kirkland City Council unanimously approved a letter of support for joining the AARP Network of Age-Friendly Communities, officially setting the initiative in motion under the capable stewardship of city staff. Then in October, the City of Kirkland officially enrolled in

the AARP Network of Age-Friendly States and Communities. The network encourages communities to focus and strengthen the features and services that help make communities livable for residents of all ages, from the cradle through retirement.

You, too, can get involved with the Senior Council by attending public meetings that occur on the second Tuesday of each month (no meetings in August or December) at the Peter Kirk Community Center. Share input, ask questions, or volunteer: SCouncil@kirklandwa.gov.



Members of the Kirkland Senior Council.

OH HEY!




[SurveyMonkey.com/r/KirklandYards](https://www.surveymonkey.com/r/KirklandYards)

DO YOU...

- HAVE A YARD?
- WANT TO SHARE YOUR OPINION?
- WANT TO BE AN INFLUENCER?*

Share your thoughts about yards with the City's Stormwater team and help develop new programming!

*Digital influencer status is not guaranteed, but you can feel super cool anyways!

Find Community and Connection Through Volunteerism

By KATE RYAN
City Manager's Office

In Kirkland, volunteering is more than just lending a hand; it's a way to build connection, foster belonging, and shape the kind of community we all want to live in.

The City's volunteer program offers a wide range of opportunities for community members to get involved in meaningful ways. Whether it's supporting special events, helping in City offices, stewarding our parks, or assisting public safety teams, volunteers play a vital role in making Kirkland shine.

At its heart, volunteering is about connection. In a time when many people feel isolated,

service can be a powerful way to meet neighbors, share purpose, and contribute to something bigger than ourselves. When we make helping others and building community important parts of how our city works, we create a Kirkland where everyone belongs.

Rooted in our City's values of We Work Hard, We Work Together, We Take Initiative, and We Care, our volunteers are everyday leaders who help make Kirkland a more welcoming, vibrant, and sustainable city for all.

Visit www.kirklandwa.gov/Volunteer to learn more. Questions? Email volunteer@kirklandwa.gov.



Kirkland Volunteers 2025 Highlights

- 2,300+ Volunteers
- 16,500+ hours served
- 95 miles of Adopt-a-Road litter picked up
- 2,000+ trees & shrubs planted
- 4,140+ senior lunches served
- and so much more

THANK YOU!

Experience World Class Art at the Outdoor Sculpture Gallery

By ALISA SARGSYAN
Cultural Arts Commission

Take a stroll down Park Lane and immerse yourself in the stories, voices, and shared experiences that bring our vibrant, inclusive community to life! The Kirkland Outdoor Sculpture Gallery is a cherished cornerstone of Kirkland's downtown art scene that showcases a rotating two-year exhibition featuring six sculptures by established and emerging artists from across the U.S.

The 2025-2026 theme is "Reflection," an exploration of how art invites us to pause, look inward, and see our surroundings through a new lens. The selected works echo Kirkland's spirit of openness and

diversity, encouraging visitors to reflect on their own experiences, relationships, and connections to the community. Through varied materials and perspectives, each sculpture is both a mirror and a window, capturing not only light and landscape, but also the many ways we see ourselves within the shared space of our city.

The works in this exhibition are for sale by the artists. Sales are handled by the artists directly and the city takes no commission on sales. If you are interested in purchasing one of the sculptures, please contact the artist by visiting the website.

The Kirkland Outdoor Sculpture Gallery was made possible by many volunteers and members of the community. We

want to share our gratitude for the funding that the city receives from 4Culture. 4Culture's commitment to public art and culture can be witnessed throughout King County in numerous public art displays in our region's cities. We also extend much gratitude to the hard work and dedication of the volunteer Kirkland Cultural Arts Commissions (KCAC), in particular the Kirkland Outdoor Sculpture Gallery Committee for their efforts to create and support this exhibition as well as the gallery. And a final thank you to the City of Kirkland's excellent Public Works team who helps us with the technical installation of these public, outdoor sculptures along our busiest commercial corridor.



Artist Milo White standing with his and Lin McJunkin's work, 'Helios.'

Learn about this gallery online at www.kirklandwa.gov/ParkLaneGallery.



Building an In-Law Unit? How to Save Time and Money on an ADU



By STEPHANIE TOPACIO LONG
City Manager's Office

Since 2020, more Kirklanders than ever have been entitled to build accessory dwelling units (ADUs) on their residential properties. You may know these small, self-contained homes by various names, including in-law units, backyard cottages, garage apartments, and more. No matter the title, building an ADU can be daunting because it's a serious time and financial commitment — but it's one that can pay off.

The City of Kirkland has been working to support and streamline the process of building ADUs to create more affordable housing in the area and strengthen the community. Thanks to a growing gallery of pre-approved ADU plans submitted by architects, designers, and builders, homeowners don't have to start from scratch. These designs offer a simpler path to building an ADU, whether you're hoping to keep aging family members at home, give adult children their own space, generate rental income, or sell the unit for a profit.

Saving time and money before construction begins is the biggest benefit of using a pre-approved ADU plan. The designs are complete, so you can pay a license fee of no more than \$1,000, and then work with the designer to adapt it to your property at their hourly rate if needed. The plans are suited to different lots, lifestyles, and budgets, including small-footprint and family-friendly ADUs, so that you can find one that works for you.

All of the pre-approved designs comply with City codes, so your permit approval can be faster and more predictable than it would be for a custom project. The turnaround may be as little as a few weeks, compared to approximately three months. Speeding up the process in these ways means paying less overall and being able to start building sooner.

Ultimately, ADUs can create options and lasting value for homeowners. If you're looking to build one, check out Kirkland's gallery of pre-approved plans to see if there are any that may fit your needs at www.kirklandwa.gov/ADUPlans.

The Green Loop Moves Forward

By SARAH ROCK
Parks & Community Services

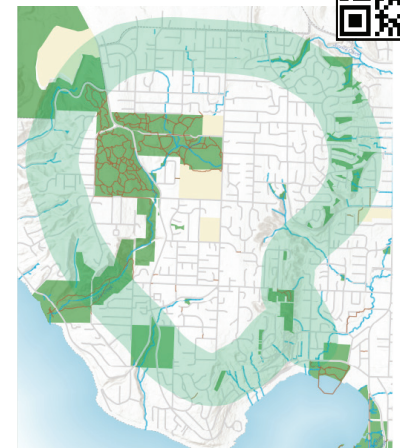
Kirkland's long-envisioned Green Loop is one step closer to reality, thanks to strong community support. The Green Loop will connect people with parks, natural areas, schools, and bus stops in the Finn Hill and Juanita neighborhoods through a continuous network of trails and pathways. It will take 10 to 20 years to complete, but hundreds of voices are already helping shape the plan.

That energy was clear this fall. In September, City staff and consultants engaged the community at DennyFest and City Hall for All. The Green Loop Online Survey and Interactive Map drew an impressive 874 responses in just one month. Staff also met with the Juanita Neighborhood Association and Finn Hill Neighborhood Alliance to gather local feedback and better understand neighborhood priorities. The momentum is supported by significant King County and State funding, including \$2.4 million from the 2020-2025 King County Parks

Levy, \$10 million from the 2026-2030 King County Parks Levy, and \$500,000 recently appropriated in the State's Capital budget.

A key part of the plan is its flexible approach. While most of the trail will be on public land, some sections may rely on voluntary partnerships with private property owners to connect public spaces. Participation is completely voluntary, and the City will fairly compensate property owners who choose to take part.

Find out more about this project by visiting www.kirklandwa.gov/GreenLoop.



A rough map showing the Green Loop concept.

Got an escape artist on your hands?

Make sure they have a pet license.



Licensing your pet benefits you and your community.

- 🐾 A licensed pet can be easily reunited with you if lost.
- 🐾 Licensing fees support Kirkland's Animal Services Program.
- 🐾 The City of Kirkland requires a pet license for all dogs and cats older than 12 weeks.



Scan the QR code to license your pet.