



## 2019 Neighborhood Safety Program Application

**Application Deadline:** To Be Determined

**(Note:** One project location per application)

### Contact Information

**Neighborhood Association:** Finn Hill Neighborhood Alliance    **Neighborhood Chair:** Scott Morris

Phone: 206-972-9493

E-mail: scott@finnhillalliance.org

**Project Coordinator:** Amy Falcone

E-mail: amyef81@yahoo.com

### General Project Information

**Location:** Corner of NE 134<sup>th</sup> St & 87<sup>th</sup> Ave NE

**Nearest Cross Street(s):**

☒ Project Priority 1 (or only project)    ☐ Priority 2

#### Project Type:

☐ Bicycle Improvement

☐ Rapid Flashing Beacon

☐ Trail Improvement

☒ Crosswalk Improvement

☒ Sidewalk Improvement

☐ Walkway Improvement

☒ Intersection Improvement

☐ Street Lighting

☐ Radar Speed Sign

☐ Traffic Calming

#### Describe the Project Scope:

Please include all aspects of the project (e.g., ADA ramps, street lights, thermoplastic, hand rails, asphalt vs. gravel).

*The proposed project would increase the safety of pedestrians, bicylists, and public transportation riders who use this intersection of NE 134<sup>th</sup> St and 89<sup>th</sup> Ave NE, by providing a raised sidewalk corner/pedestrian refuge with ADA ramps.*

**City Cost Estimate:** \$ 43,200

### 1. Neighborhood Benefit/Support (0–60 points)

Please explain how the project will address a recognized safety need (especially with school kids or other vulnerable populations) and result in a positive and lasting neighborhood benefit (e.g., creates an important neighborhood pedestrian or bicycle connection):

*Improving this corner will have tremendous benefit for families walking to nearby schools, commuters walking to the bus stop at this corner, and many other pedestrians who walk throughout the neighborhood. This area was improved with a raised curb as part of the 2016 Neighborhood Safety Program, and although this corner is one of the most dangerous spots along the improved section of road, it was too complicated to be fixed under that program and remains unimproved. This is a very busy intersection, with a public transportation bus stop, school bus traffic, construction vehicle traffic, and many other traffic using this arterial. It is along a school walk route, and there are crosswalks at this intersection. It is a tight corner for many of the larger vehicles (busses, etc.), and so they often cut the corner, making it unsafe for pedestrians.*

Were adjacent neighbors who will be impacted by the project contacted (e.g., street lights)? Yes ✓ No \_\_\_\_

Is there support for the project within the neighborhood (e.g., businesses, schools, and PTSAs)? Yes ✓ No \_\_\_\_

**Note:** Please attach letters, emails, or a petition of support for your project.

## 2. Community Benefit/Support (0–30 points)

Please explain how the project benefits people outside of the neighborhood (e.g., creates a community-wide connection):

*As this corner is along a busy arterial used by many in the community, it would greatly benefit those traveling to work and school in the area. The benefit further extends beyond the immediate area, as it is nearby a city bus stop and nearby a middle school that serves a larger area.*

Is there broad community support for the project outside the neighborhood (e.g., businesses, schools, and PTSAs, and community groups)? Yes ✓ No \_\_\_\_

**Note:** Please attach letters, emails, or a petition of support for your project.

## 3. Neighborhood/Community Project Partnership (0–10 points)

Will there be financial contributions and/or volunteer hours for this project (e.g., trail construction or maintenance)?

If so, please provide details of the contributions. (**Note:** Volunteer value is \$23.56.) N/A

Description	Financial Contribution (\$)	Volunteer Contribution (# of Hours * \$23.56)	Total
Total Neighborhood/Community Project Partnership			

### Please submit application to:

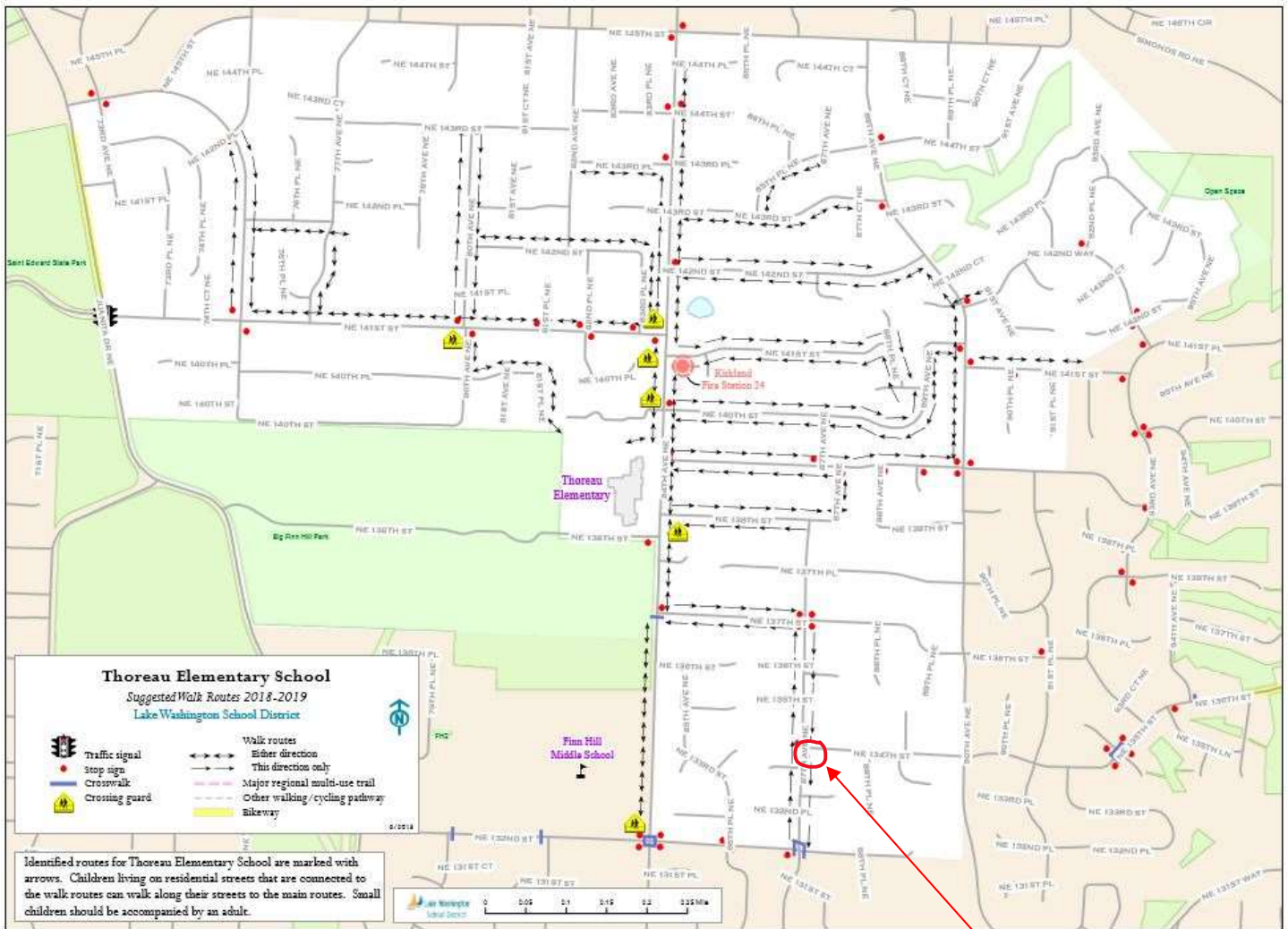
City of Kirkland

Kari Page, Senior Neighborhood Services Outreach Coordinator

123 5<sup>th</sup> Avenue, Kirkland, WA 98033

For any questions or further information, please contact Kari Page at [kpage@kirklandwa.gov](mailto:kpage@kirklandwa.gov) or (425) 587-3875.

## Exhibit A: Thoreau School Walk Route Map



Proposed project location,  
along school walk route

## Exhibit B: PTA Letter of Support

H.D. Thoreau Elementary School PTA  
8224 NE 138<sup>th</sup> St  
Kirkland, WA 98034

February 14, 2019

**RE: Support for 2019 Finn Hill Neighborhood Alliance NSP Project**

Dear Neighborhood Safety Panel Representatives and City Staff:

The safety of our students is a top priority to the H.D. Thoreau Elementary School PTA. It is with this in mind that I write this letter in strong support of the below application for enhancing school walk route safety:


- Installing a pedestrian refuge and ADA ramps at the corner of NE 134<sup>th</sup> St and 87<sup>th</sup> Ave NE

This improvement will greatly increase the safety of students and their families who choose to walk to Thoreau and likely also nearby Finn Hill Middle School. Additionally, as with any school walk route safety enhancement, the completion of this project will hopefully encourage more families to choose to walk to school.

The corner of NE 134<sup>th</sup> Street and 89<sup>th</sup> Avenue NE is important because it is positioned along an arterial where buses, trucks, and many cars drive past, and the lack of physical barrier between pedestrians and vehicles poses a particularly concerning risk to children walking to school. I strongly believe that adding a sidewalk corner for pedestrians here would substantially improve the level of safety for our children walking along this route.

Thank you for considering this Neighborhood Safety Program application and for prioritizing the safety of our Thoreau families!

Sincerely,



Amy E. Falcone

President, Henry David Thoreau Elementary School PTA



# **Exhibit C: Project Map and Cost Estimate from City Staff**

