



2018 Neighborhood Safety Program

Energizing Kirkland's Neighborhoods

City Council
April 17, 2018





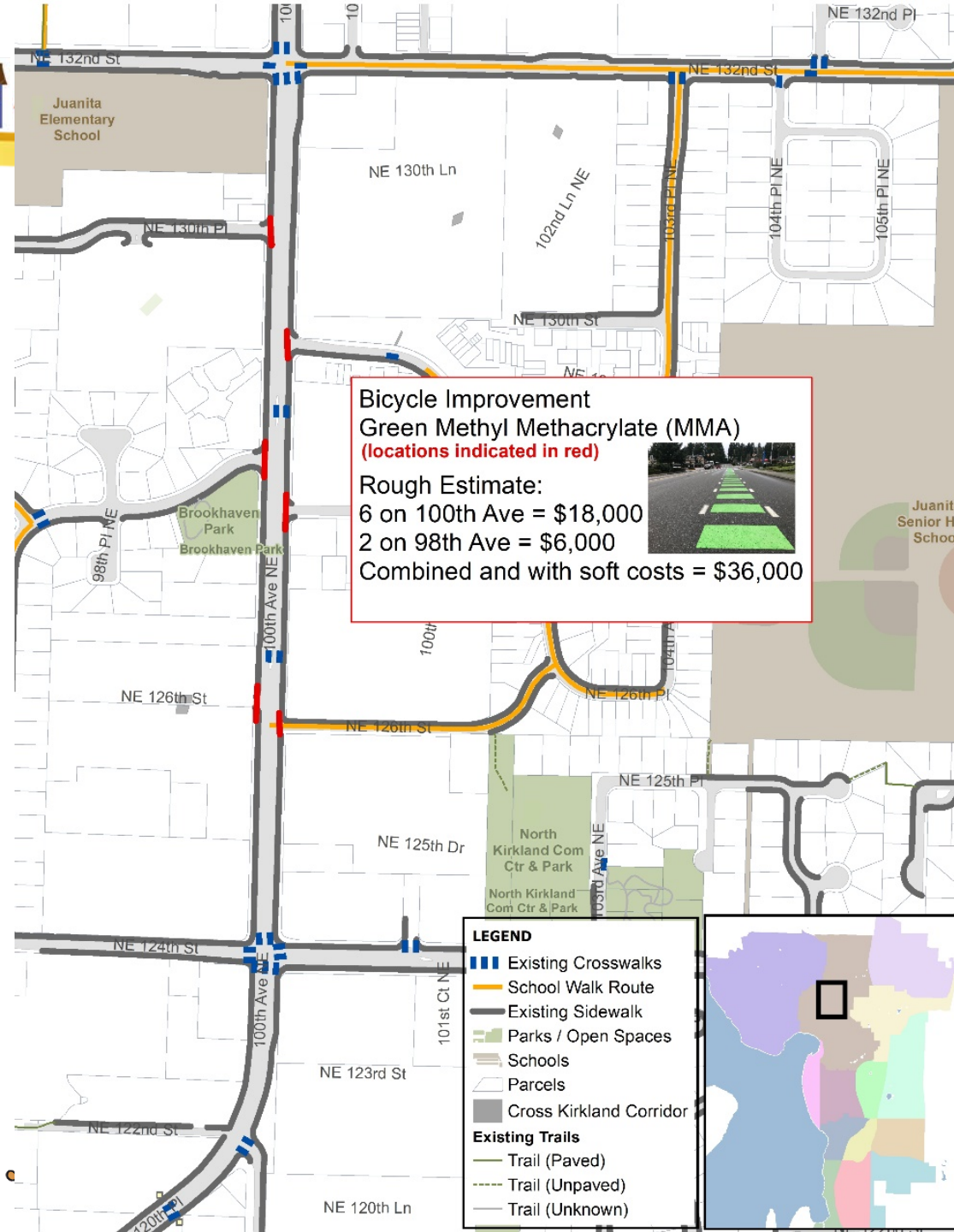
2018 Neighborhood Safety Recommendations

Top Priority Projects			
Score	NSP #	Project Name/Location	Rough Estimate
136	18NSP01	Bicycle Improvements 98th Ave and 100th Ave NE	\$35-50K
132	18NSP02	Radar Speed Sign on 132nd Ave NE from NE 128th to NE 144th Street	\$35-50K
127	18NSP03	Radar Speed Sign on Kirkland Way at CKC	\$35-50K
119	18NSP04	Trail Connection on the CKC at NE 53rd Street	\$4-14K
117	18NSP05	Walkway Improvement on 7th Ave from 4th to 6th Streets	\$35-50K
109	18NSP06	Stair Improvements for CKC connection along NE 100 Street at Cotton Hill Park	\$35-50K
109	18NSP07	Rapid Flashing Beacon on NE 70th Street at 120th Ave	\$35-50K+



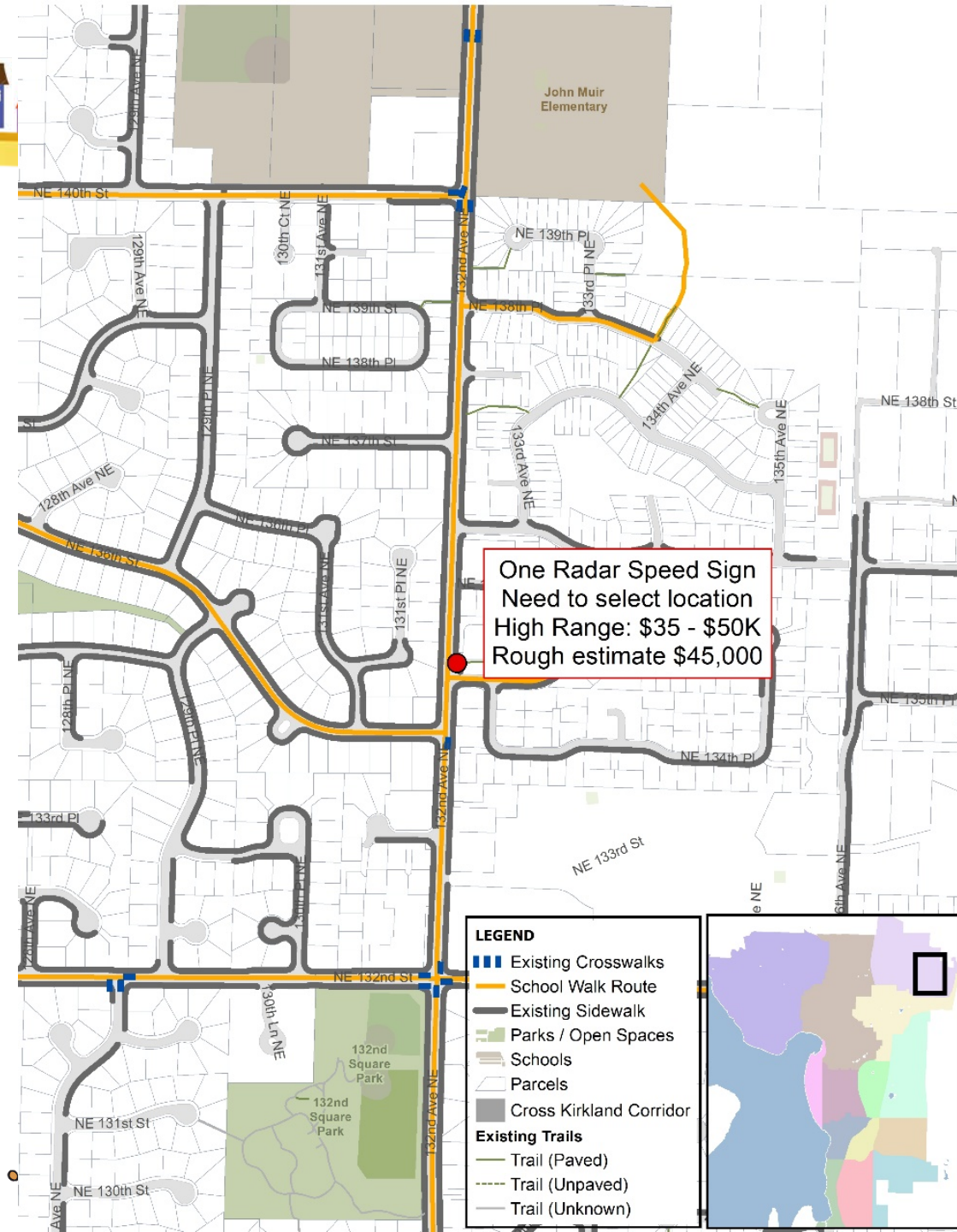


1 Juanita: Green pavement marking/bicycle lanes 100th Ave NE





- Ped/bike crash history
- School walk route
- High health equity score

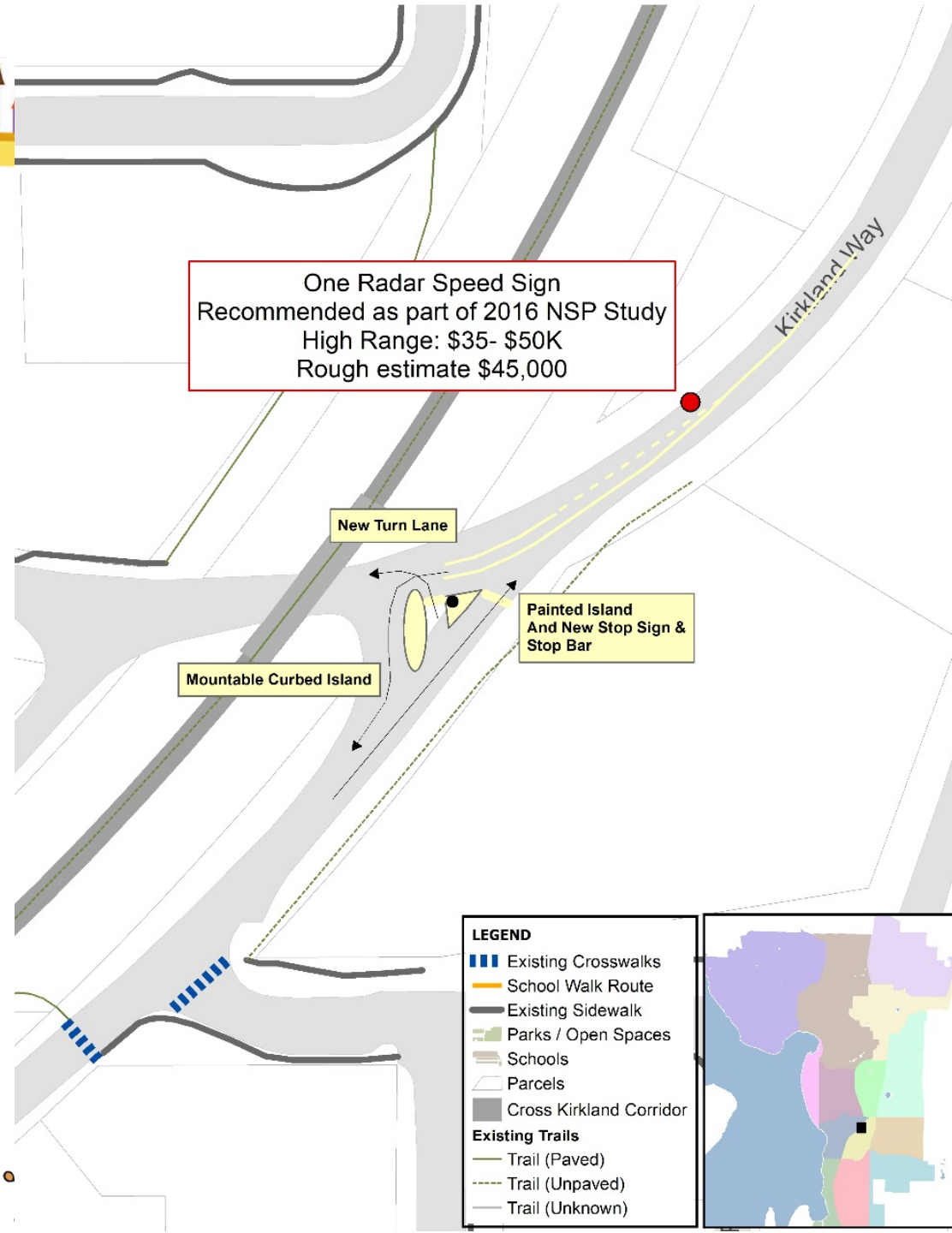




3

Everest: Radar Speed Sign Kirkland Way at CKC

- High speeds and moderate volumes
- High public benefit by panel

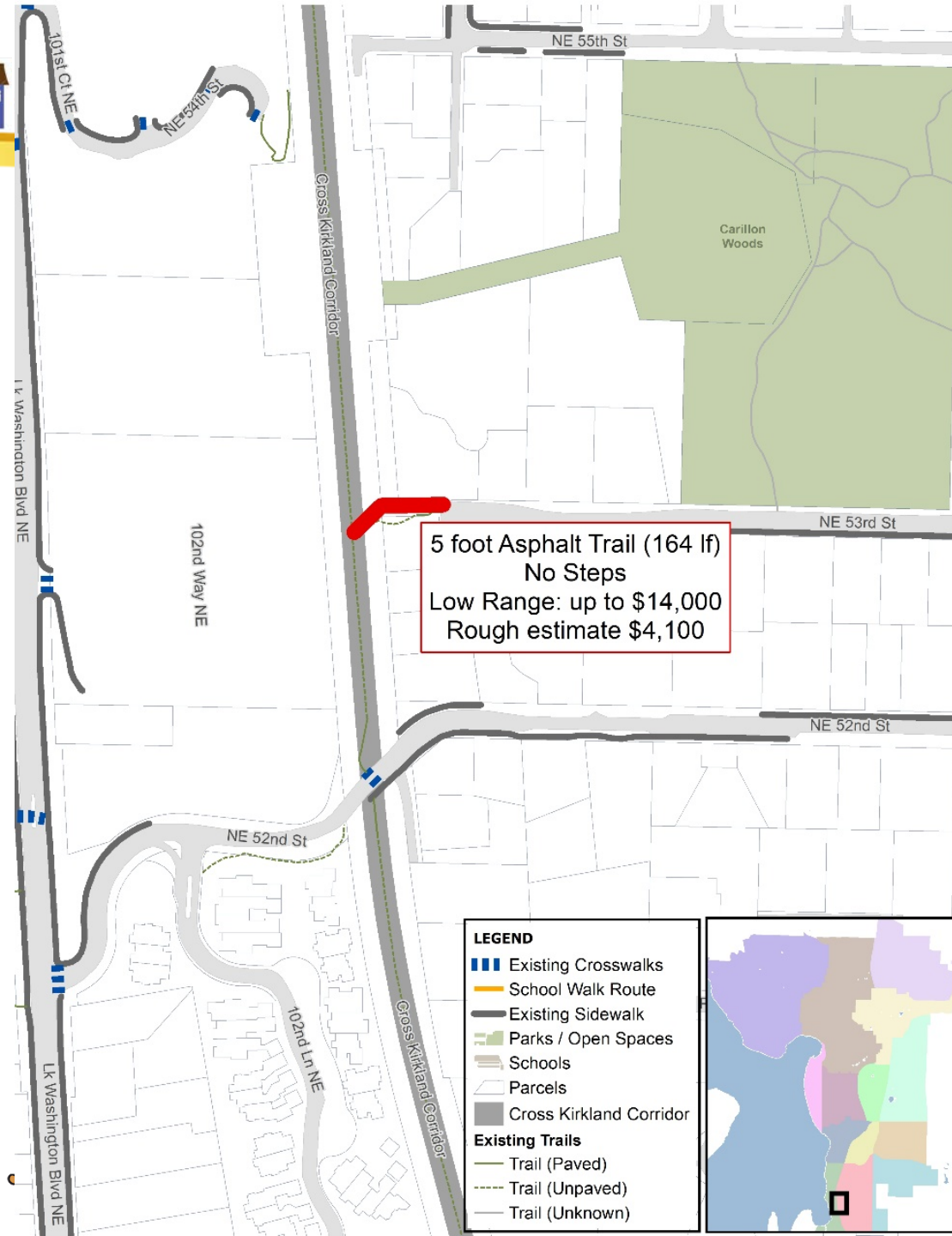




4

Central Houghton: Asphalt trail connection CKC at NE 53rd Street

- Connects to School Walk Route
- High walkability
- Improves maintenance – by paving dirt path

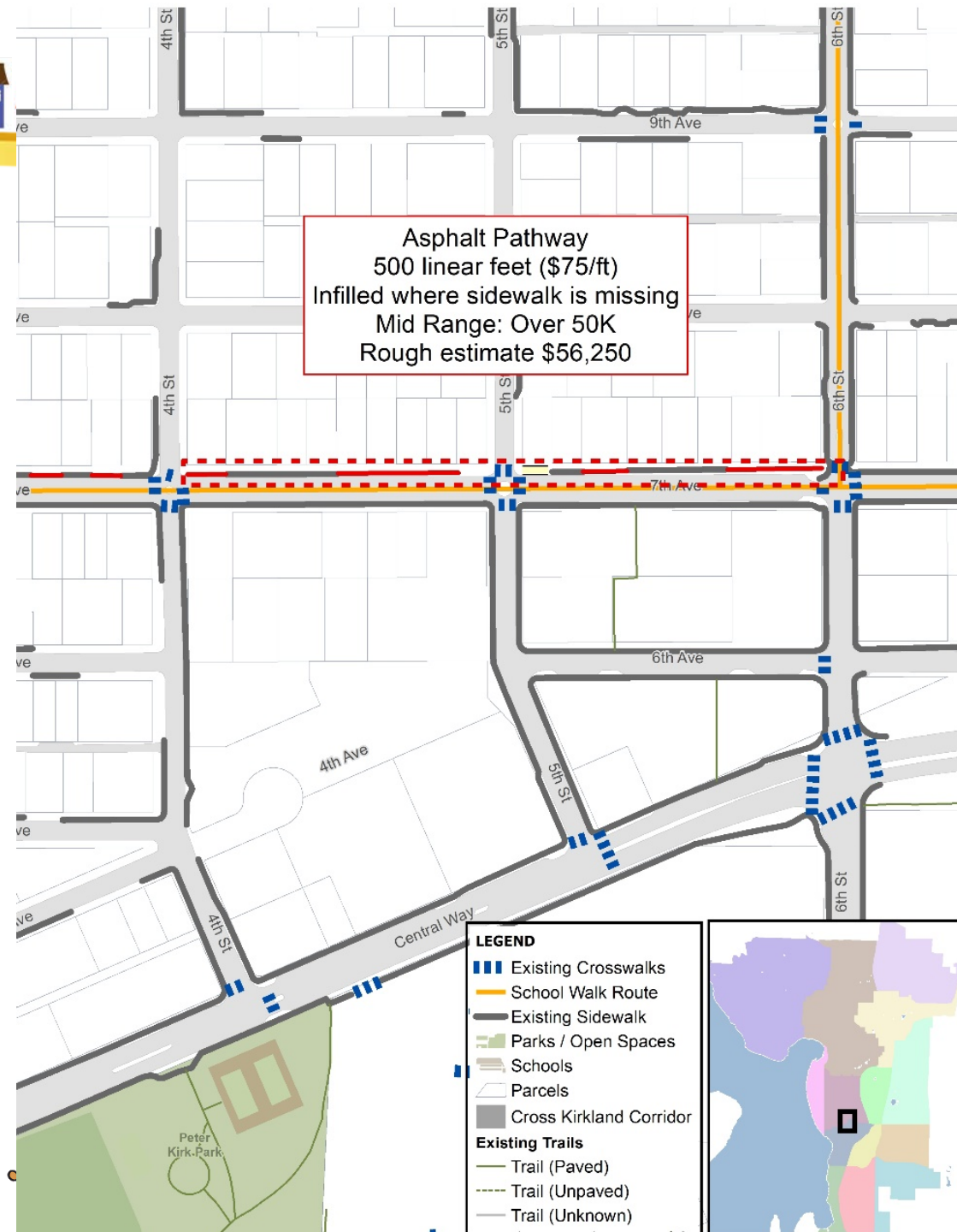




5

Norkirk: Asphalt walkway (gaps) 7th Ave from 4th to 6th Streets

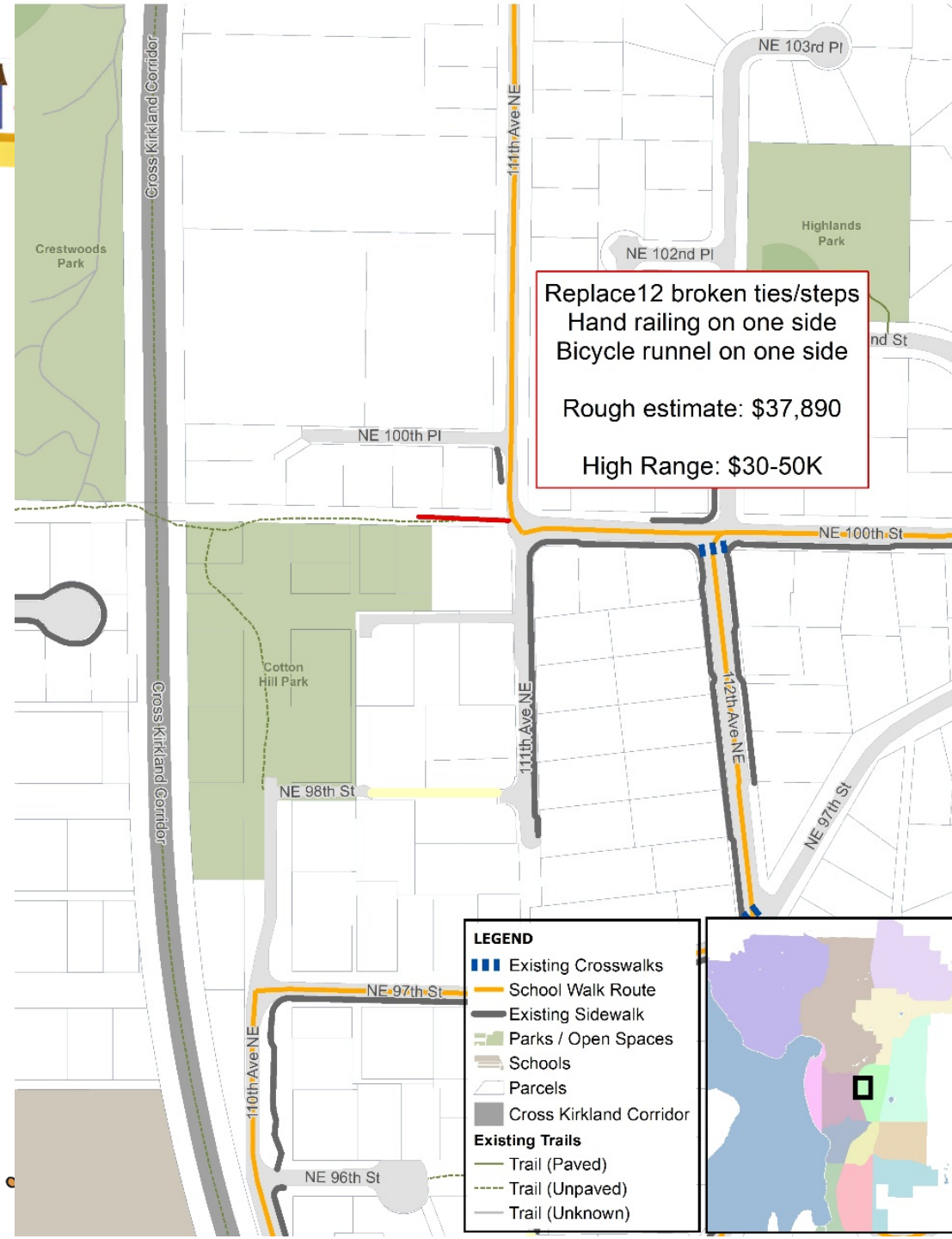
- School Walk Route
- High walkability
- No crashes – but near misses





6 Highlands: Bicycle runnel and hand rail on stairs NE 100 Street at Cotton Hill Park

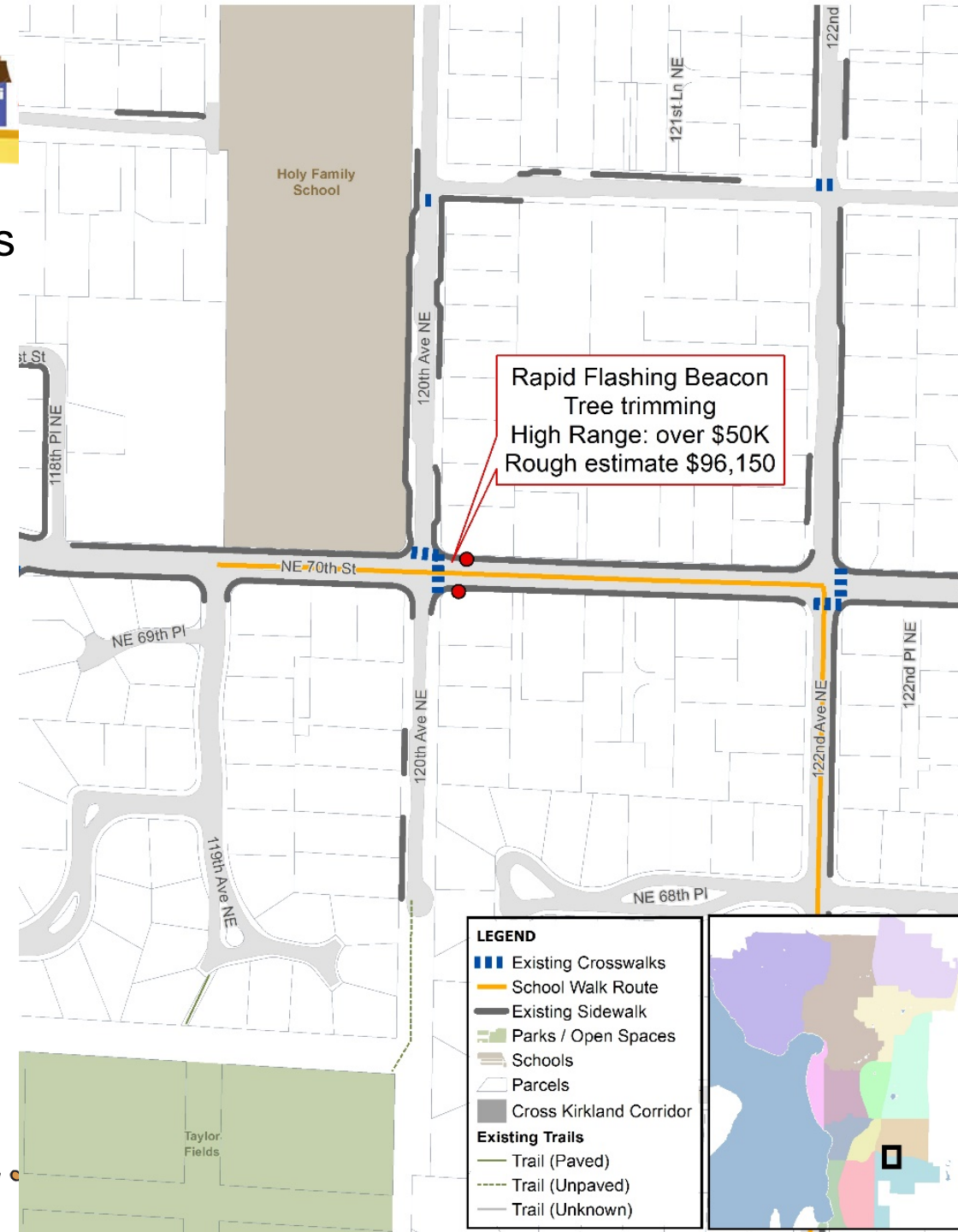
- Connections to Parks and CKC
- Connects to School Walk Route
- Moderate walkability





7 South Rose Hill/Bridle Trails: Rapid Flashing Beacons NE 70th Street at 120th Ave

- High speeds – moderate volumes
- School Walk Route
- High walkability





2018 Neighborhood Safety Recommendations

Moderate Priority Projects			
Score	NSP #	Project Name/Location	Rough Estimate
107	18NSP08	Crosswalk at Lakeshore Plaza at Marina Park	\$35-50K
106	18NSP09	Radar Speed Sign on 131st Way east of 94th Ave NE	\$35-50K





8

Moss Bay: Crosswalk and ADA ramp Lakeshore Plaza at Marina Park

- High walkability
- Accessibility (ADA ramp)
- Link to transit and ped/bike facilities

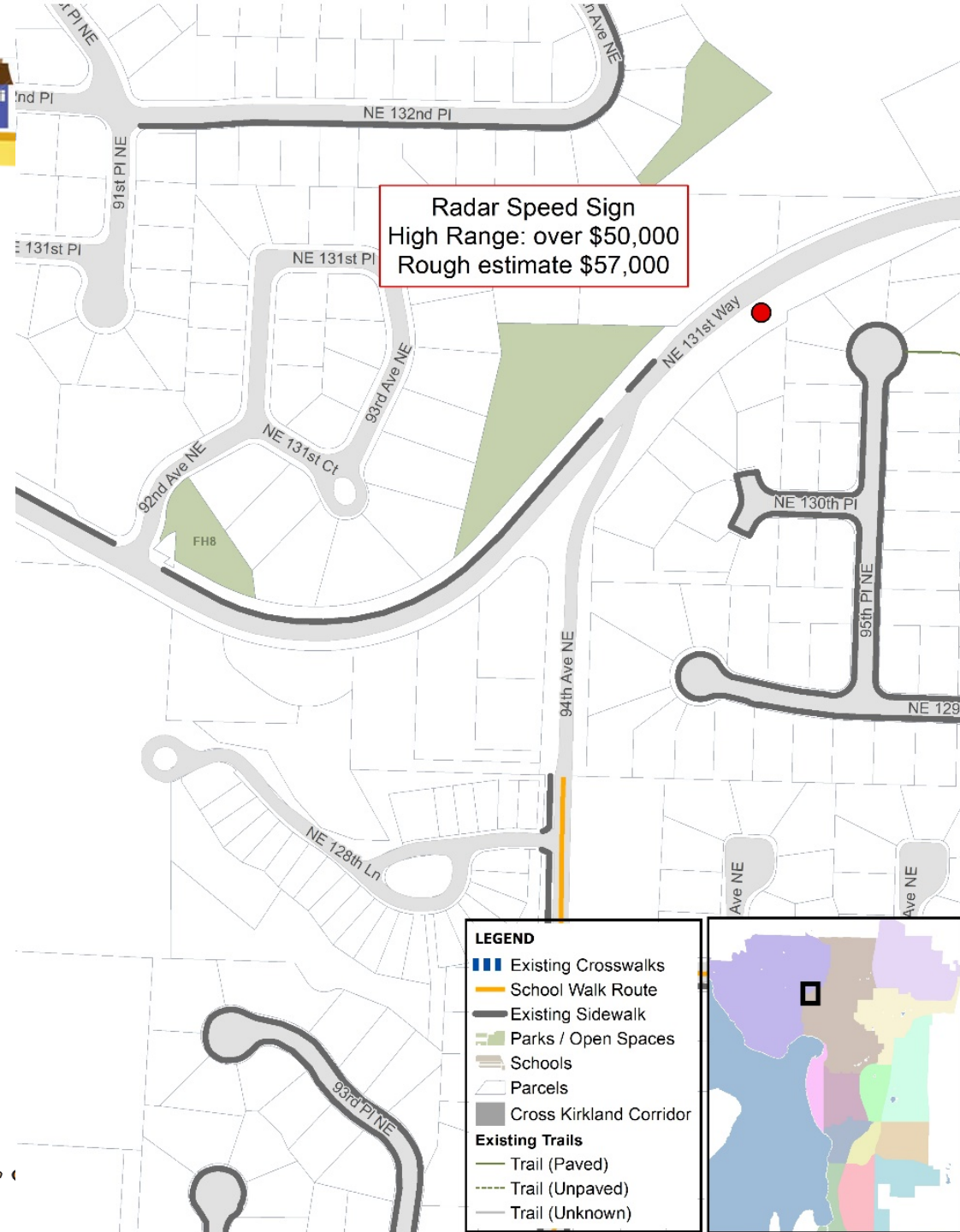




9

Finn Hill: Radar Speed Sign 131st Way east of 94th Ave NE

- Not a School Walk Route (but connects to SWR)
- Moderate speeds and volumes
- Moderate walkability (but connects to high)





Questions/Comments?





Street Light Projects

City Council
April 17, 2018





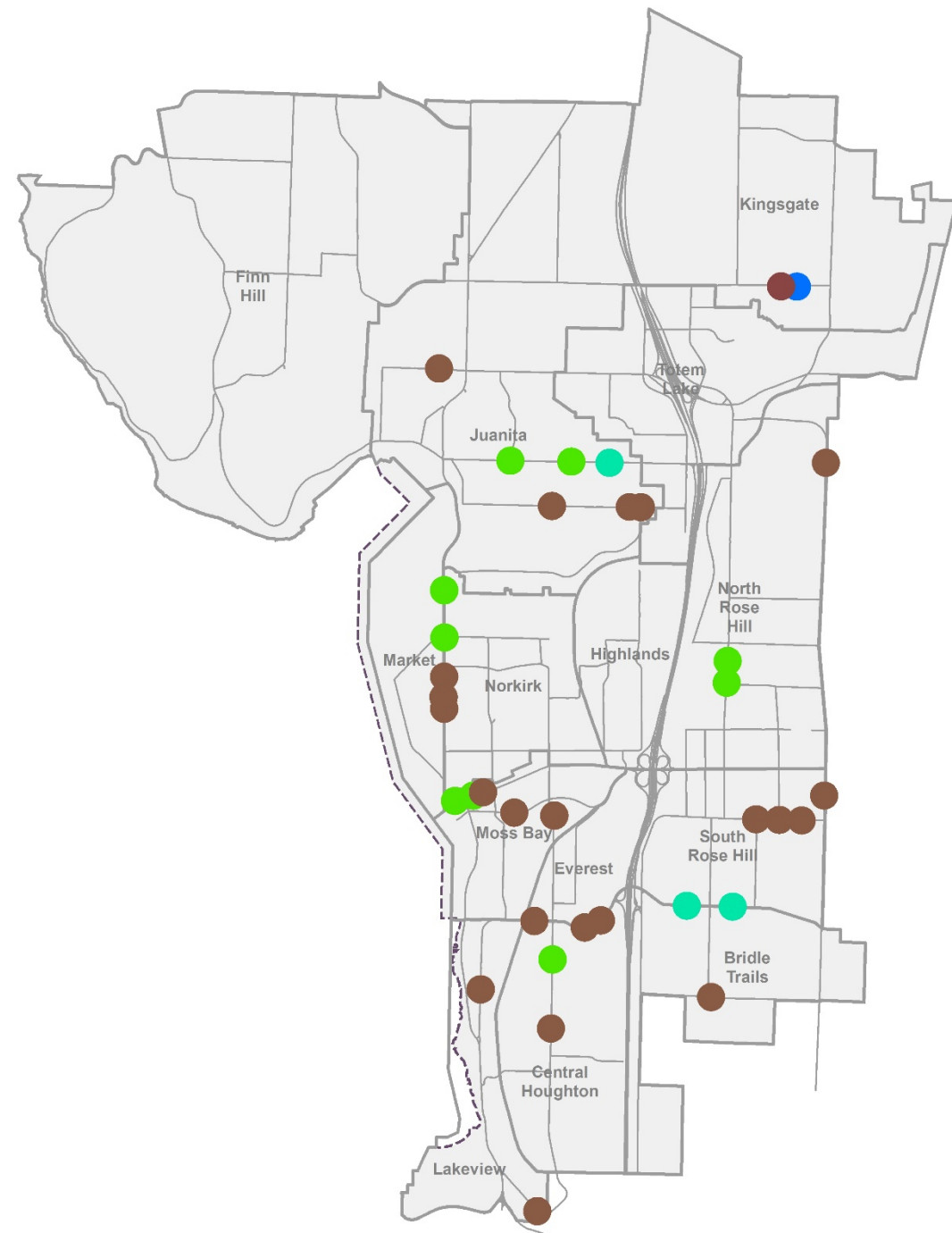
2018 Street Light Projects

Green = High priority

Brown = Moderately high priority

Blue = LED conversion (there may be more)

Not mapped: Approximately 70 lower priority locations





Questions/Comments?

